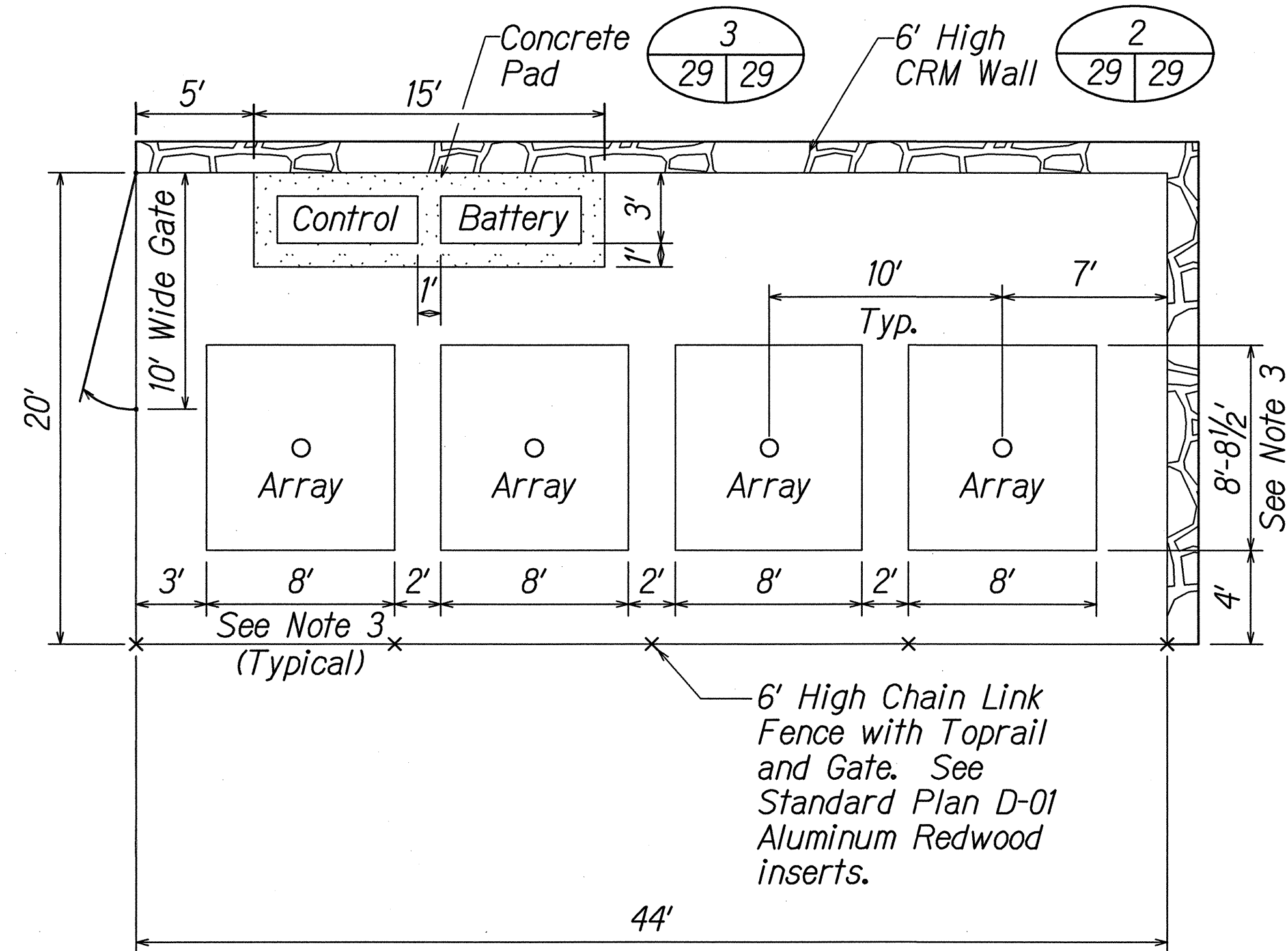
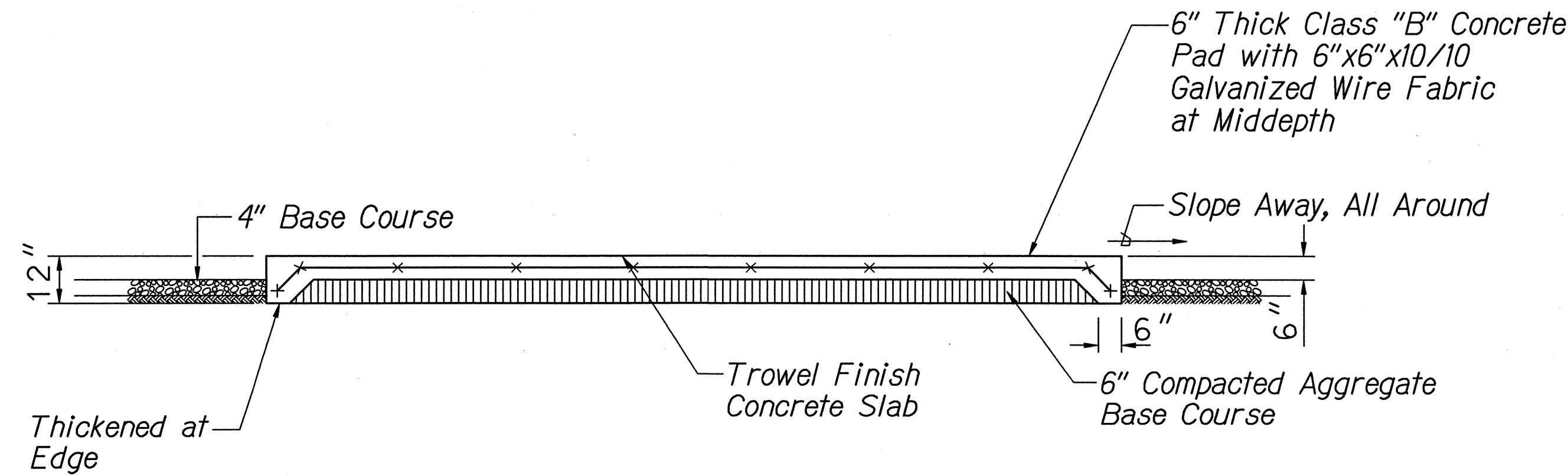


FED. ROAD DIST. NO.	STATE	PROJ. NO.	FISCAL YEAR	SHEET NO.	TOTAL SHEETS
HAWAII	HAW.	STP-0900(52)	1998	29	38

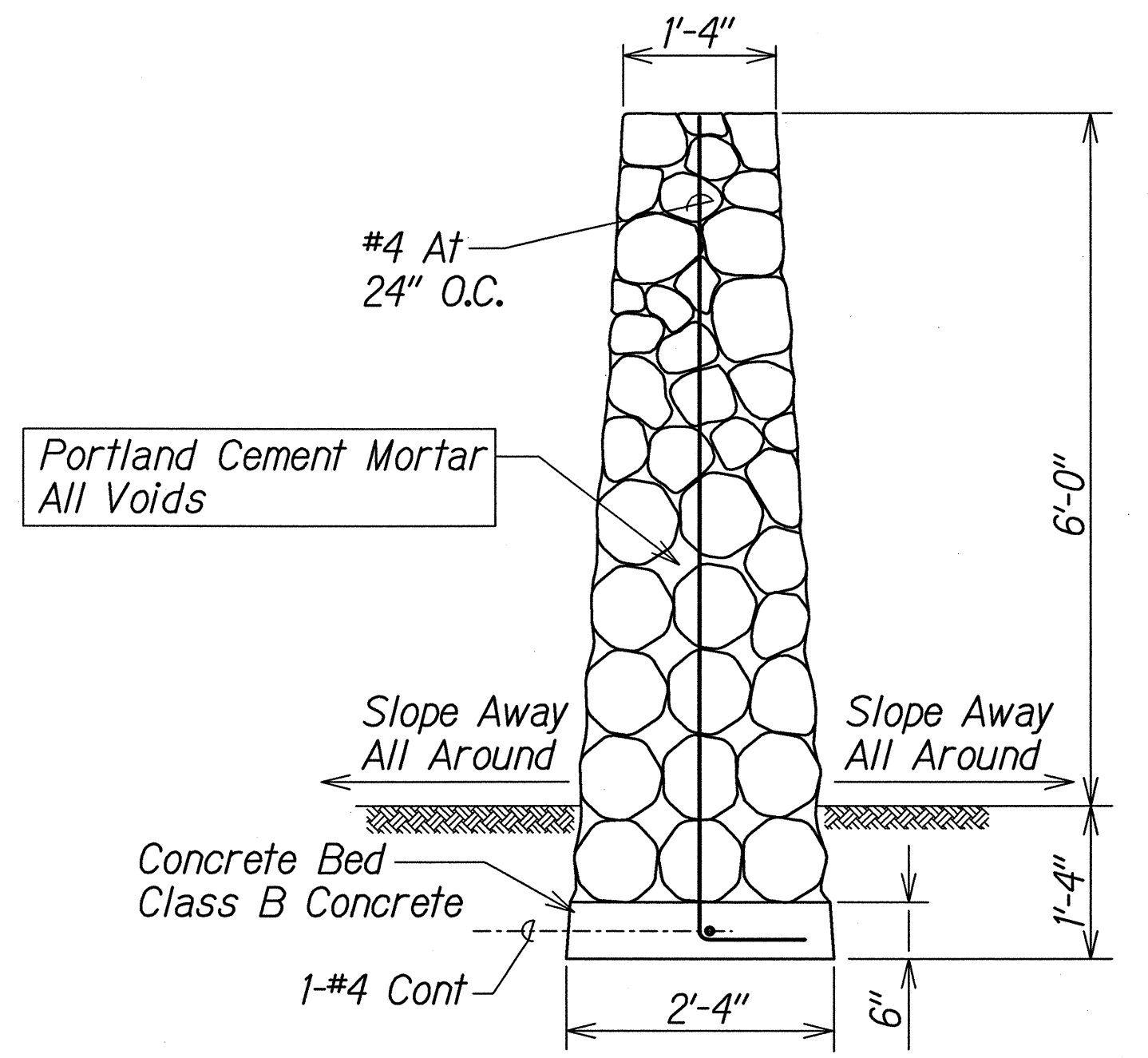


- Notes:
- Grading of the Enclosure and Surrounding Area Shall be Field Directed to Assure Longitudinal Drainage Around the Enclosure.
 - Grade Area within Fence & Finished w/ 4" Thick Base Course for Weed Control.
 - Dimensions to be Confirmed with Manufacturer's Shop Drawing.

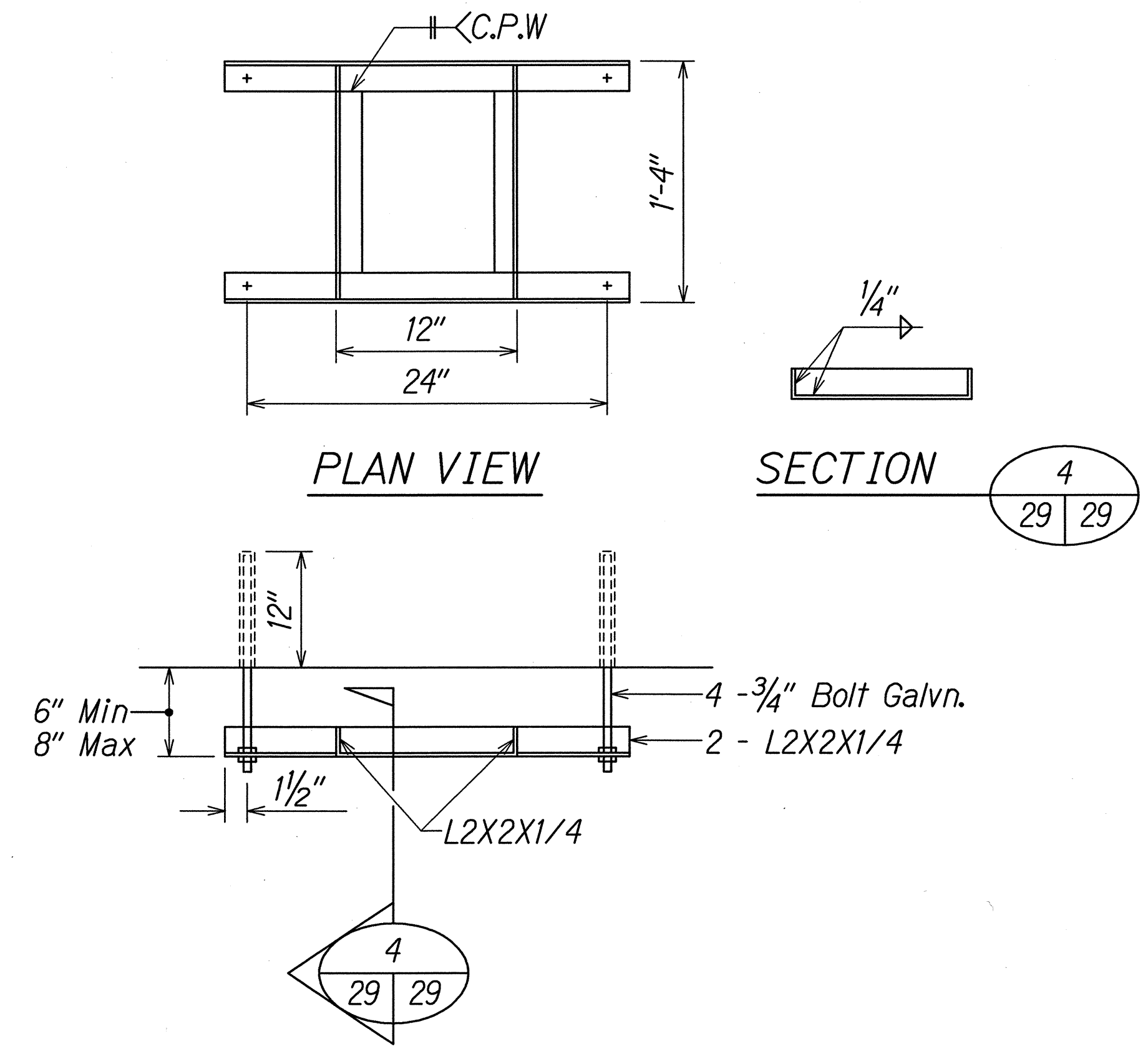
ENCLOSURE
Scale: 3/16"=1'-0"



CONCRETE PAD
Not to Scale



CRM WALL DETAIL
Scale: 3/4"=1'-0"



- Notes:
- 3/4" Bolt Shall Be Pull-Out Tested For 500# Capacity By A Certified Testing Lab. At Least 2 Out of Each Grouping of 4 Bolts Shall Be Tested.
 - Angle Iron Shall Be Stainless Steel, Type 316 Conforming To ASTM A276.
 - Bolts and Nuts Shall Be Type 316, Stainless Steel.

TUNNEL LIGHT SUPPORT DETAIL
Not To Scale

ORIGINAL PLAN	DATE
DESIGNED BY	
TRACED BY	
NOTE BOOK	
QUANTITIES BY	
CHECKED BY	
No.	

CARY K. KONO
LICENSED PROFESSIONAL ENGINEER
NO. 4575-C
HAWAII, USA
THIS WORK WAS PREPARED BY ME OR UNDER MY SUPERVISION

STATE OF HAWAII
DEPARTMENT OF TRANSPORTATION
HIGHWAYS DIVISION

ENCLOSURE DETAILS AND TUNNEL LIGHT SUPPORT DETAIL

HONOAPIILANI HIGHWAY BIKEWAY IMPROVEMENTS,
SHAW STREET TO MAALAEA HARBOR
Federal Aid Project No. STP-0900(52)

Scale: AS NOTED Date: DEC. 1997

SHEET No. 1 OF 1 SHEETS