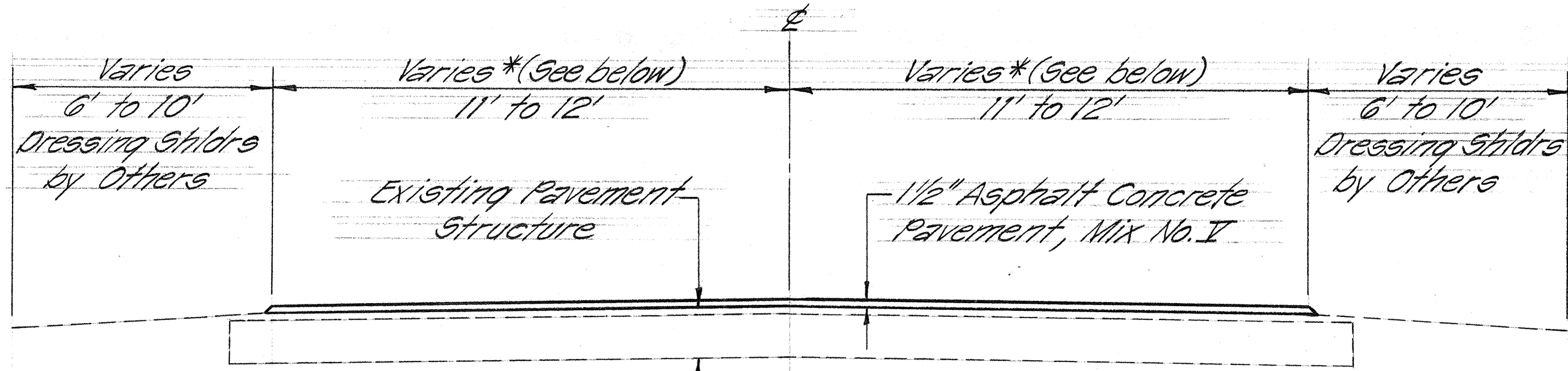
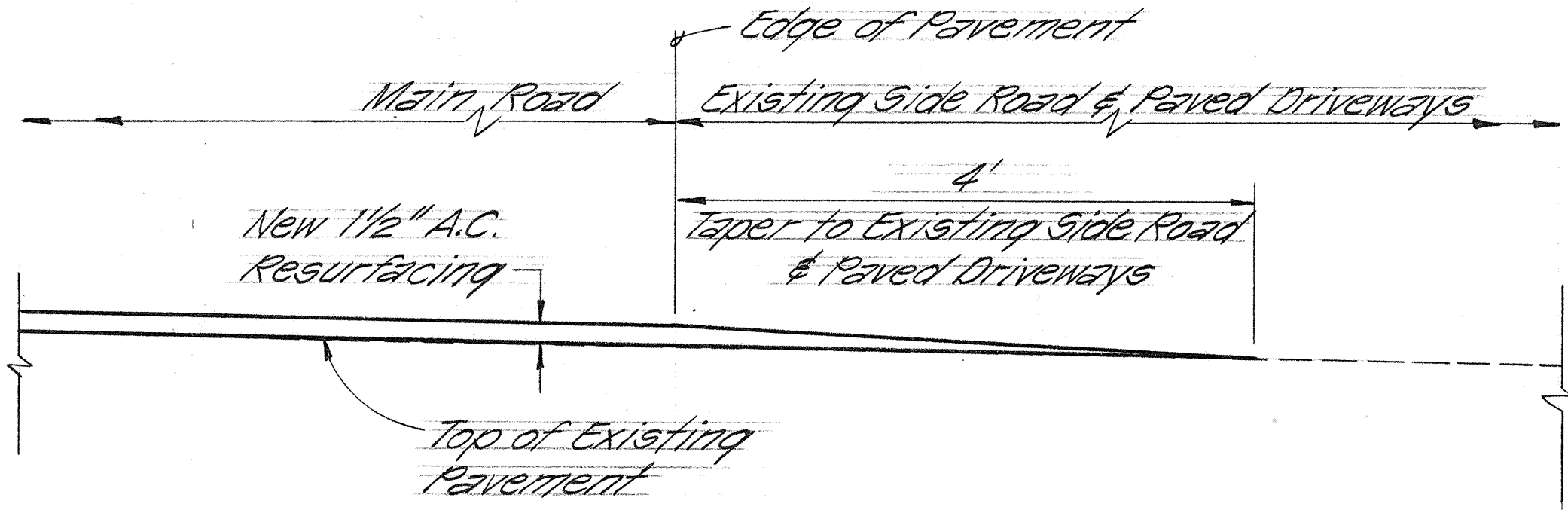


FED. ROAD DIST. NO.	STATE	PROJ. NO.	FISCAL YEAR	SHEET NO.	TOTAL SHEETS
HAWAII	HAW.	HWY-M-01-82M	1982	3	6

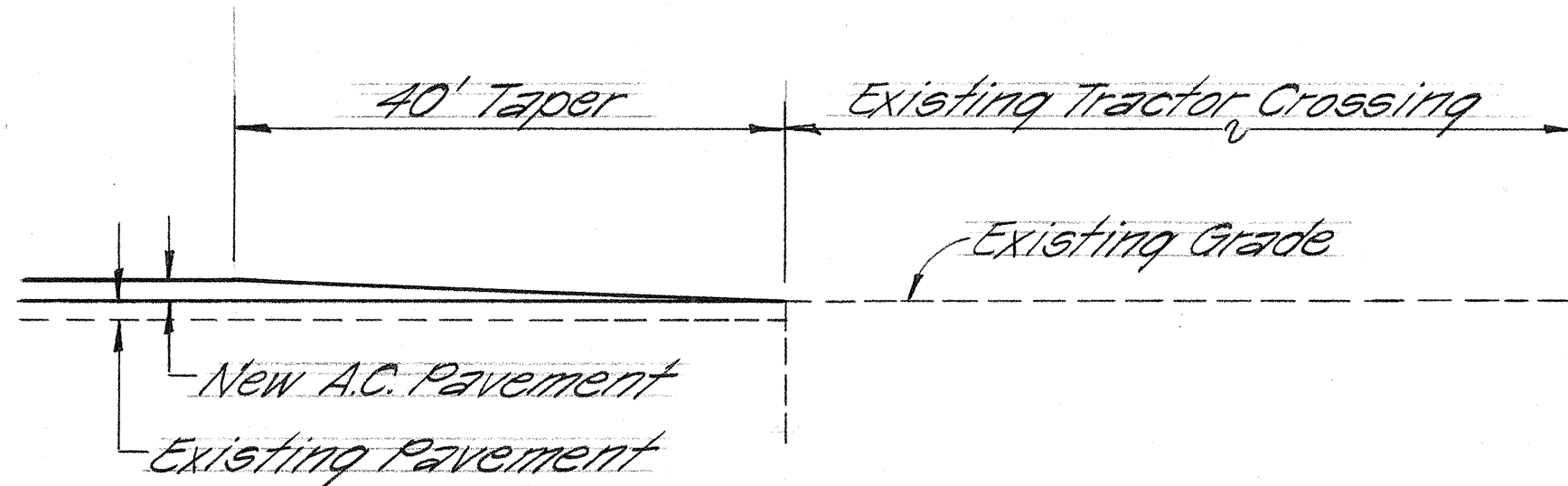


* Puupeeelua Avenue : 22' wide pavement
 Farrington Avenue : 24' wide pavement
 Kalae Highway : 24' wide pavement

TYPICAL SECTION
 Scale: 3/8"=1'-0"



TYPICAL SECTION AT PAVED DRIVEWAY & SIDE ROAD CONNECTION
 Scale: 1"=1'-0"



RESURFACING DETAIL AT TRACTOR CROSSINGS
 STATION 86+50 ~ FARRINGTON AVENUE
 STATIONS 44+50 & 77+00 ~ KALAE HIGHWAY
 Not to Scale

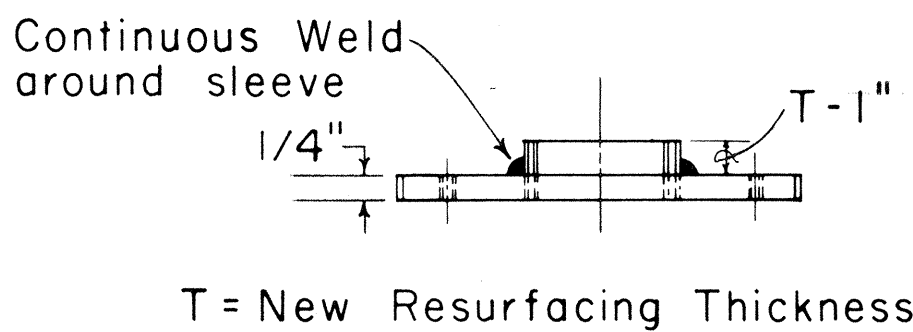


PLATE ELEVATION

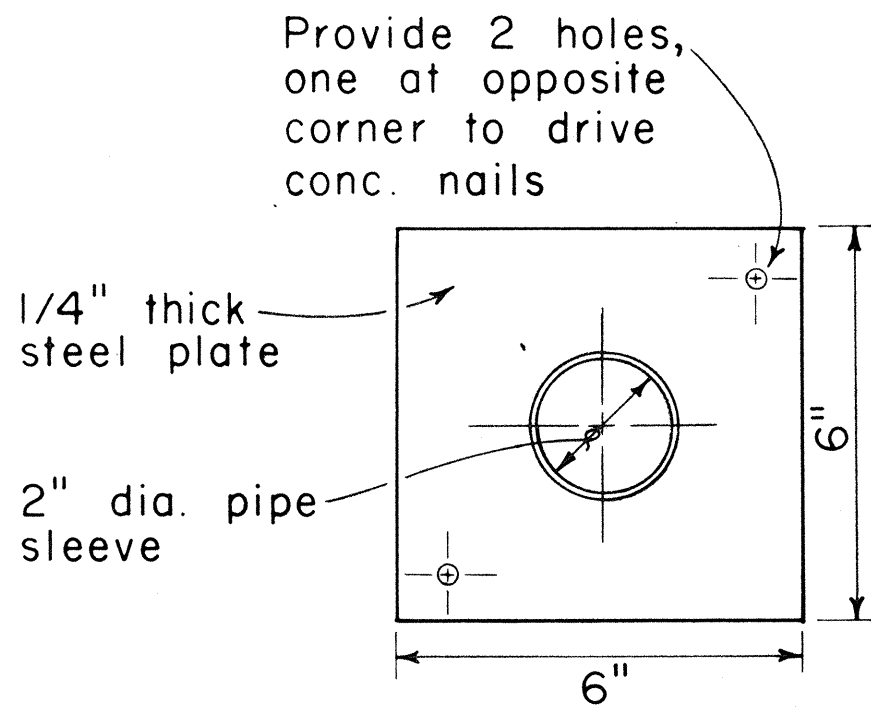
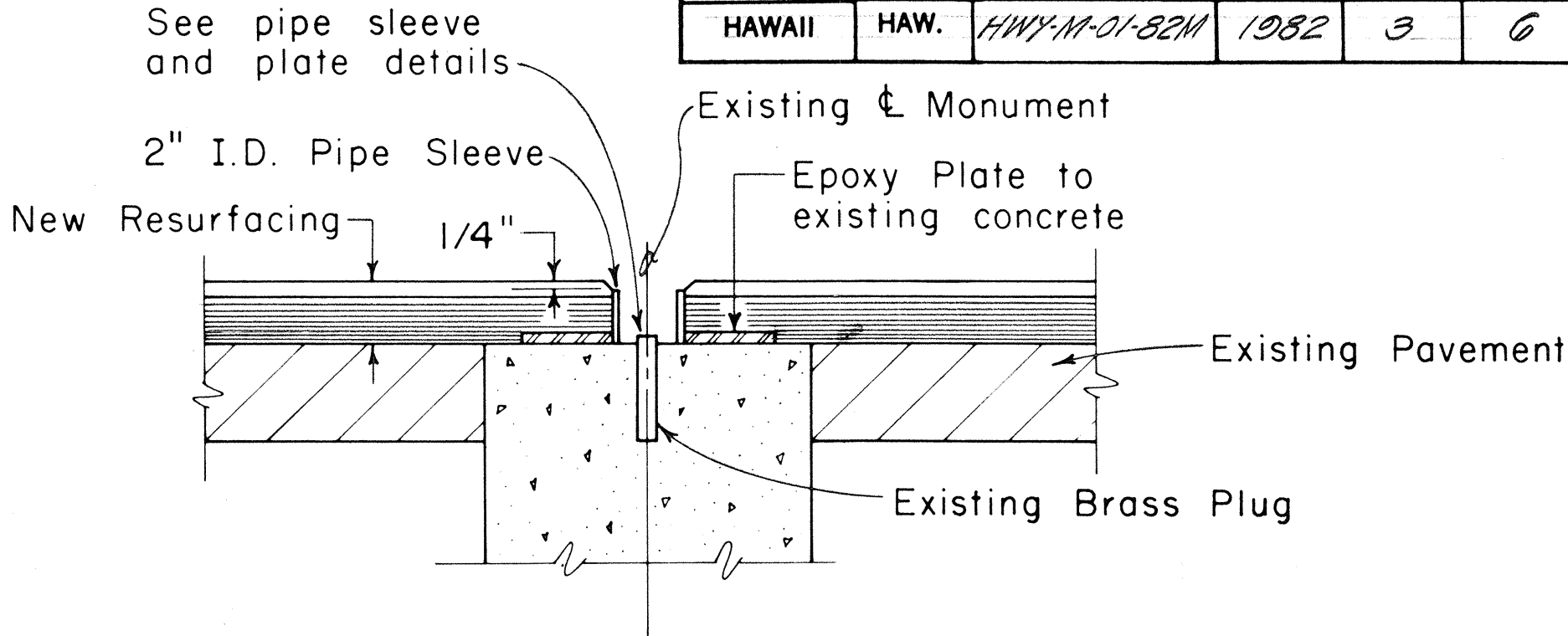
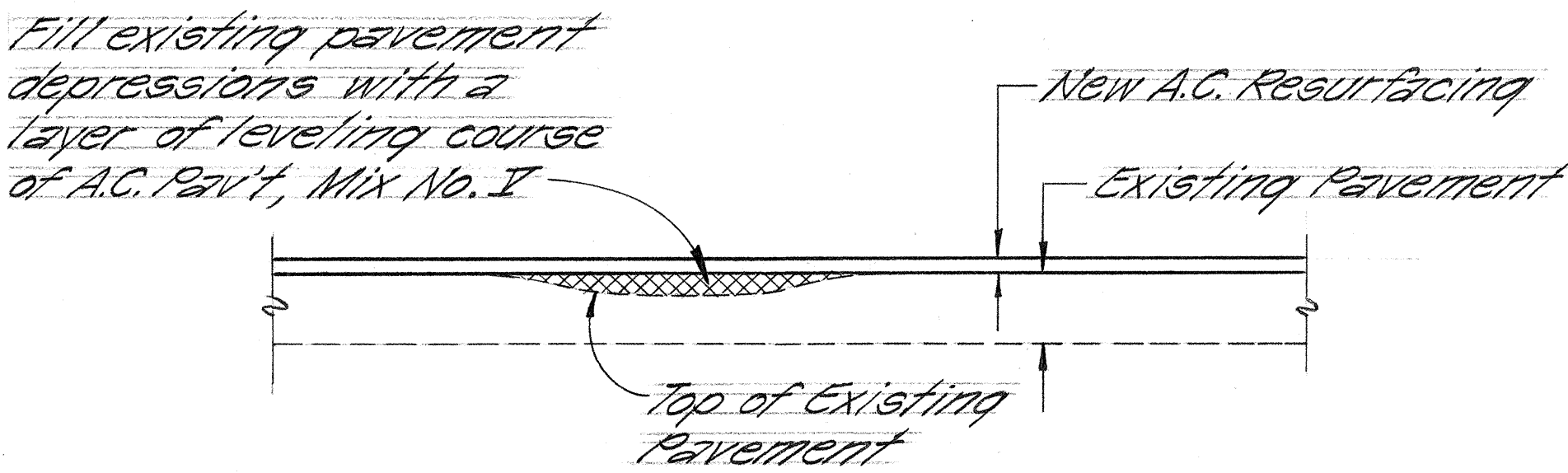


PLATE PLAN



SECTION THRU MONUMENT

DETAILS FOR PRESERVING CENTERLINE MONUMENT
 Not to Scale



LEVELING COURSE DETAIL
 Scale: 1"=1'-0"

STATE OF HAWAII

DEPARTMENT OF TRANSPORTATION

HIGHWAYS DIVISION

TYPICAL SECTIONS & PRESERVING & MONUMENT

RESURFACING AT HOOLEHUA, MOLOKAI

PROJ. NO. HWY-M-01-82M

Scale as noted

SHEET No. 1 OF 3 SHEETS

3

ORIGINAL PLAN	SURVEY PLOTTED BY	DATE
NOTE BOOK	DRAWN BY	
No.	DESIGNED BY	
	QUANTITIES BY	
	CHECKED BY	