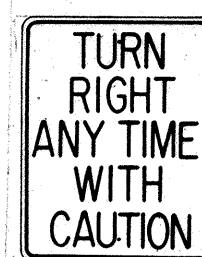


R1-1
30" x 30"



R2-1 (35)
24" x 30"

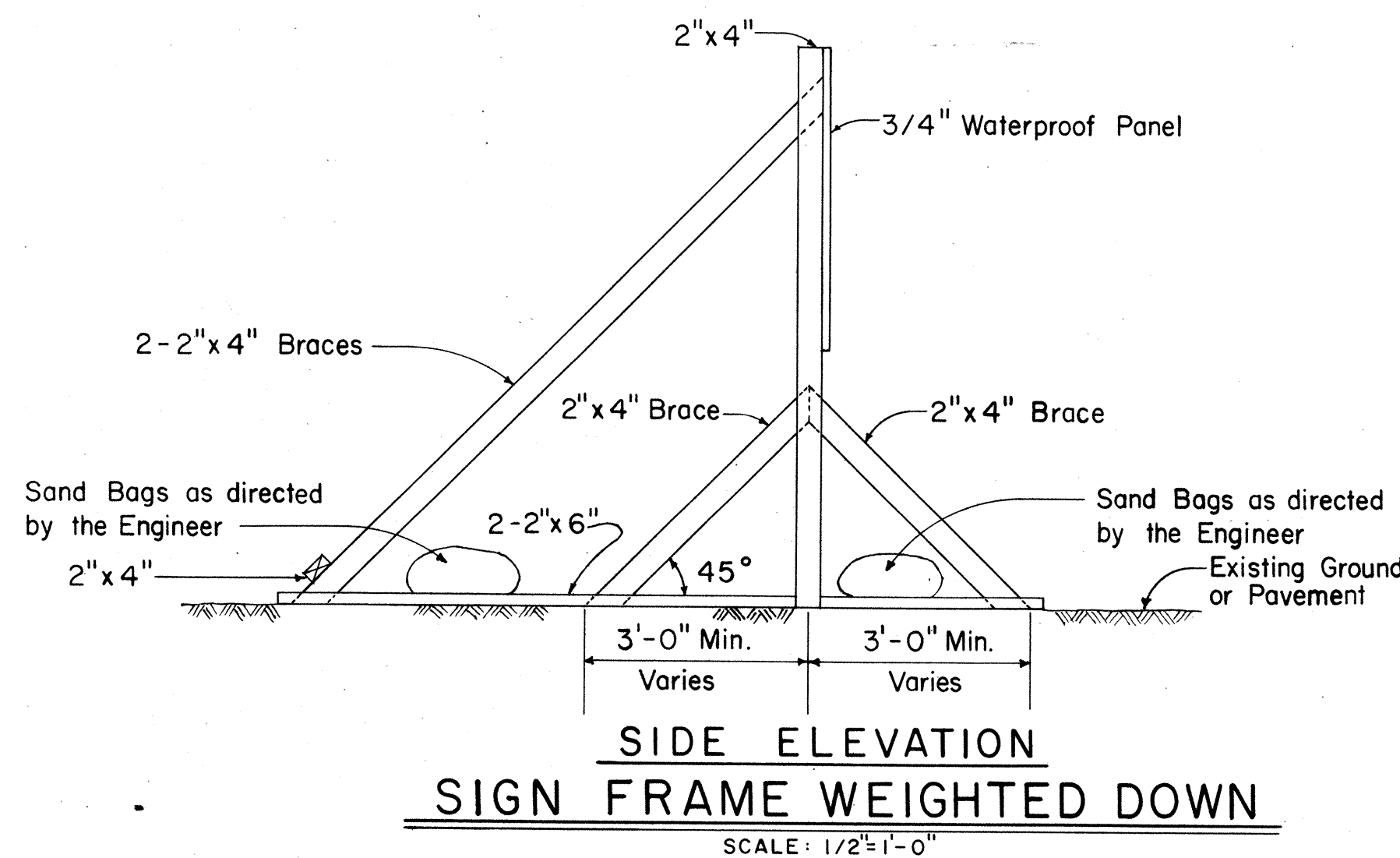


R15-1
24" x 30"

NOTE

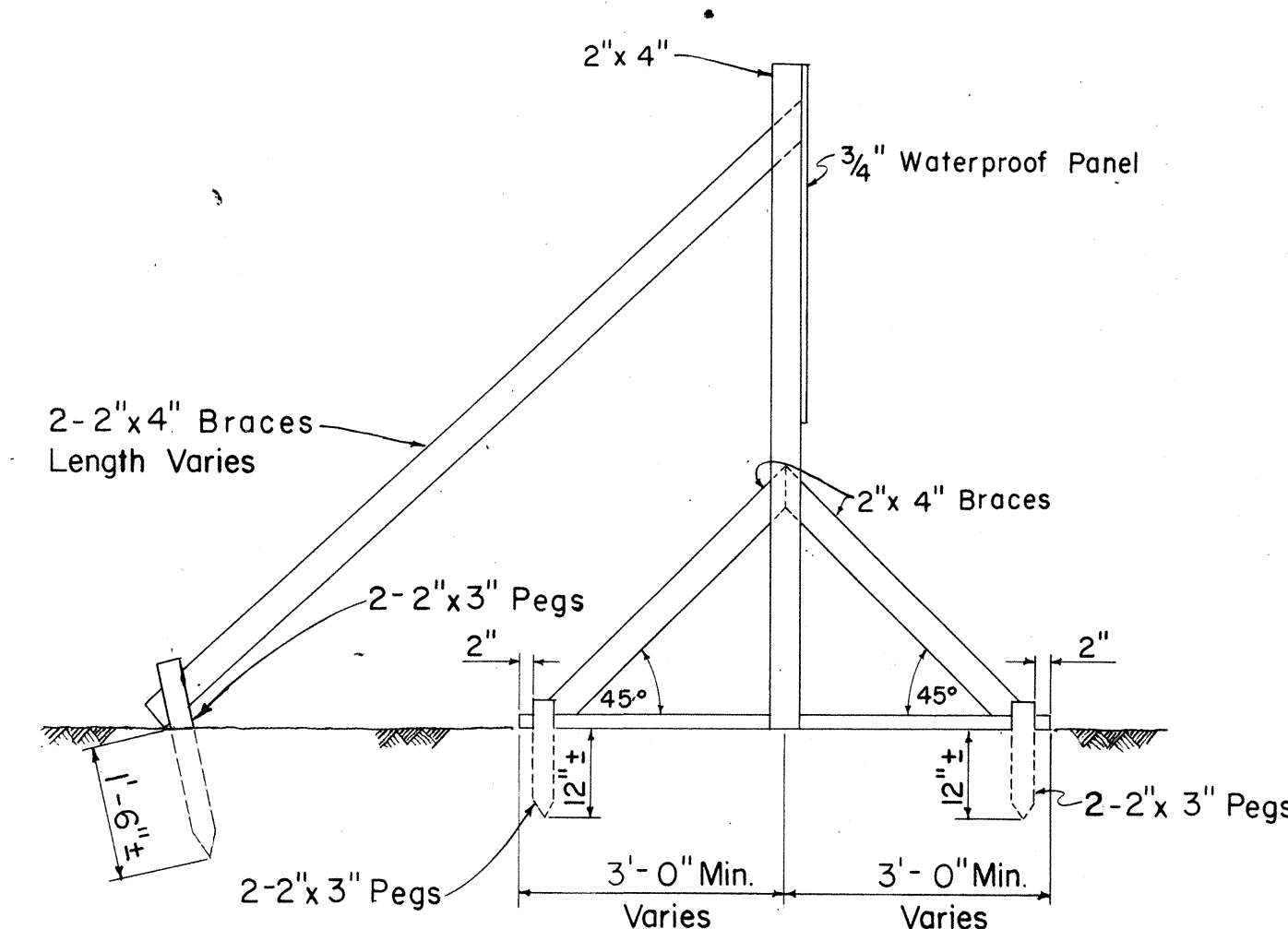
- The shape, color, plate details, lettering and reflectorization of Regulatory Signs (Prefix R) and Warning Signs (Prefix W) shall be in accordance with the "Manual of Uniform Traffic Control Devices for Streets and Highways," dated June, 1961 and the BPR Manual "Standard Highway Signs," dated September, 1961 unless otherwise specified.
- All regulatory and warning signs shall be reflectorized unless otherwise specified.
- All regulatory and warning signs shall have 3/8" bolt holes drilled at appropriate locations unless otherwise noted.
- For R2 Signs, number in () indicates speed and shall be shown on the plans.

SUMMARY OF DIRECTIONAL REGULATORY & WARNING SIGNS	
DESCRIPTION	QUANTITY
Speed Limit 35, R2-1 (35)	1
Stop, R1-1	3
Turn Right Anytime with Caution, R15-1	1



SIDE ELEVATION
SIGN FRAME WEIGHTED DOWN

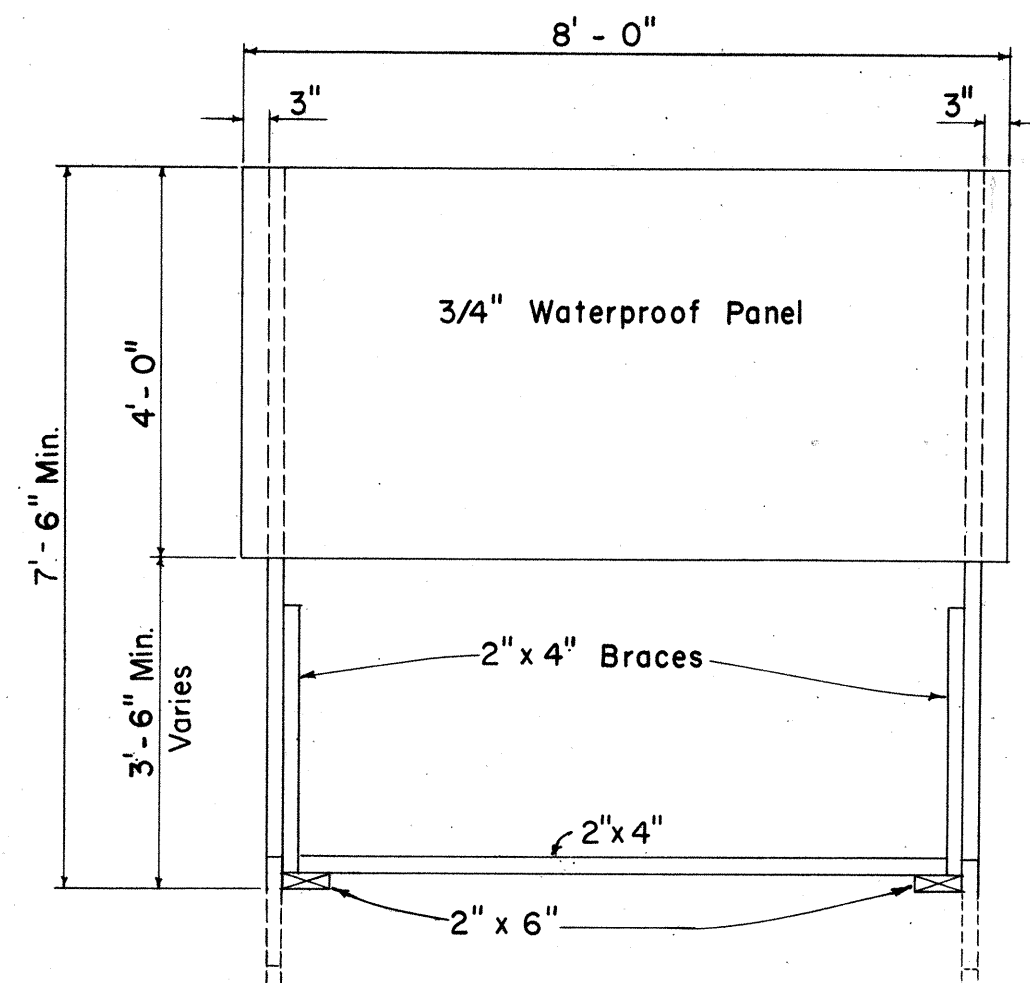
SCALE: 1/2" = 1'-0"



SIDE ELEVATION

SIGN FRAME ANCHORED IN GROUND

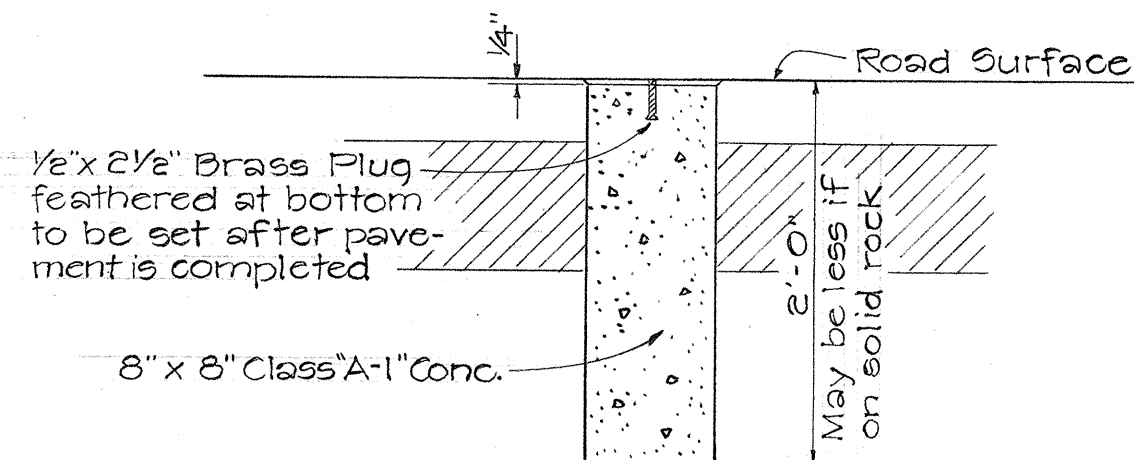
Scale: 1/2" = 1'-0"



FRONT ELEVATION

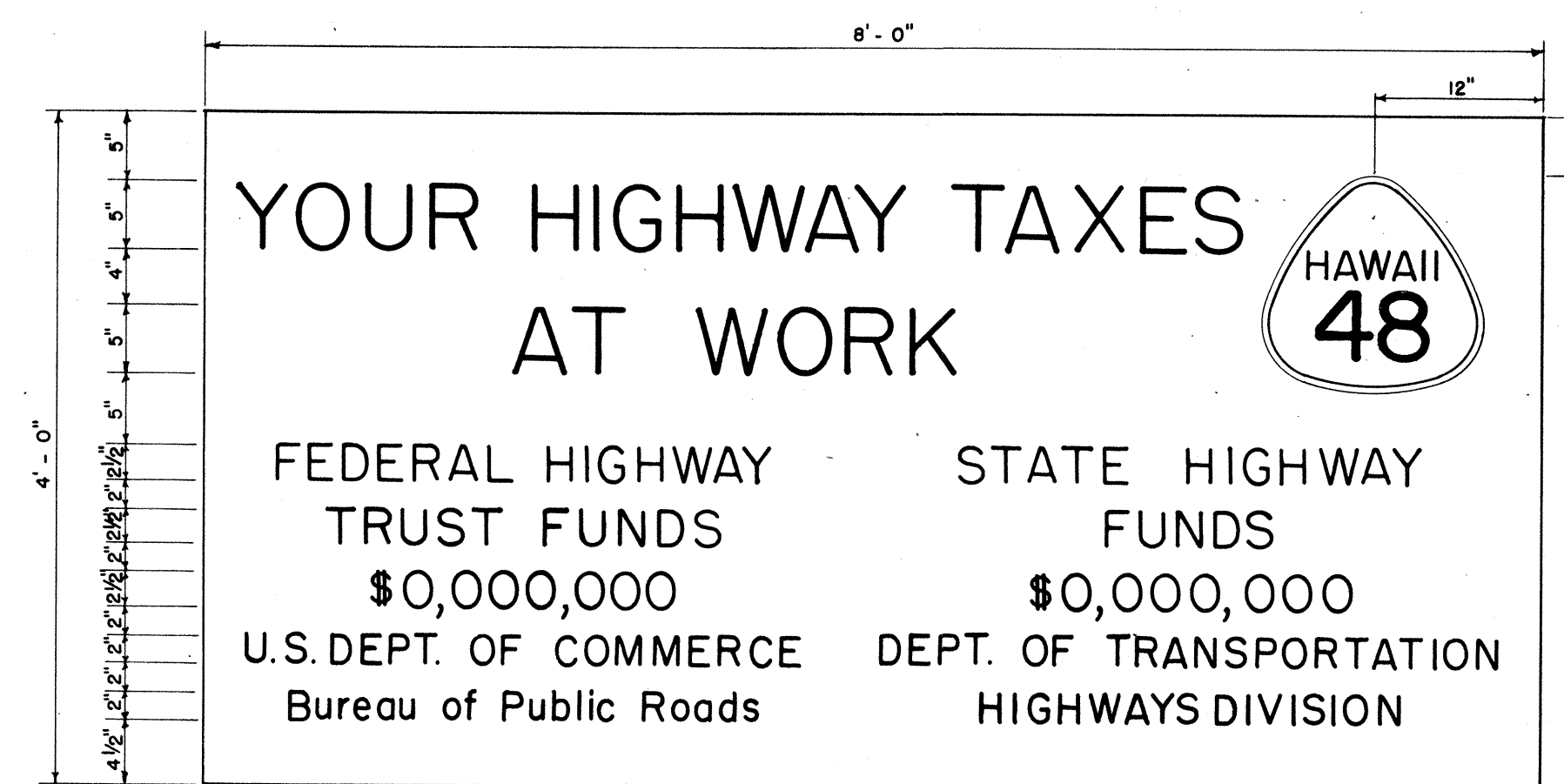
PROJECT SIGN NOTES

- The Contractor shall construct, install and maintain the Project Signs, at the locations shown on the plans and as ordered by the Engineer.
- All costs incurred in the construction, installation and maintenance of the Project Signs, will not be paid for separately, but shall be considered as included in the unit price paid for the various items in the proposal.
- The Project Signs shall be removed and stockpiled at the completion of the project as ordered by the Engineer and are to become State Property.
- The exact figures for the various funds involved will be furnished to the Contractor for the incorporation in the Project Signs.
- The legend shall be black on white background unless otherwise specified.
- Refer to Sheet No. 5 for details on the exact shape and size of the State route marker to be shown on these Project Signs.
- All letters shall be of size and design shown and shall conform with "Standard Alphabets for Highway Signs", Bureau of Public Roads, 1952. Use Series "C" letters unless otherwise noted.



CENTERLINE MONUMENT

Scale: 1" = 1'-0"



PROJECT SIGN PANEL

Scale: 1" = 1'-0"

PROJECT IDENTIFICATION SIGN

Scale: As Shown

STATE OF HAWAII
DEPARTMENT OF TRANSPORTATION
MISCELLANEOUS DETAILS

Farrington Ave 5-0480(1) Unit 2
Scale As Noted Aug. 1965
SHEET No. OF SHEETS