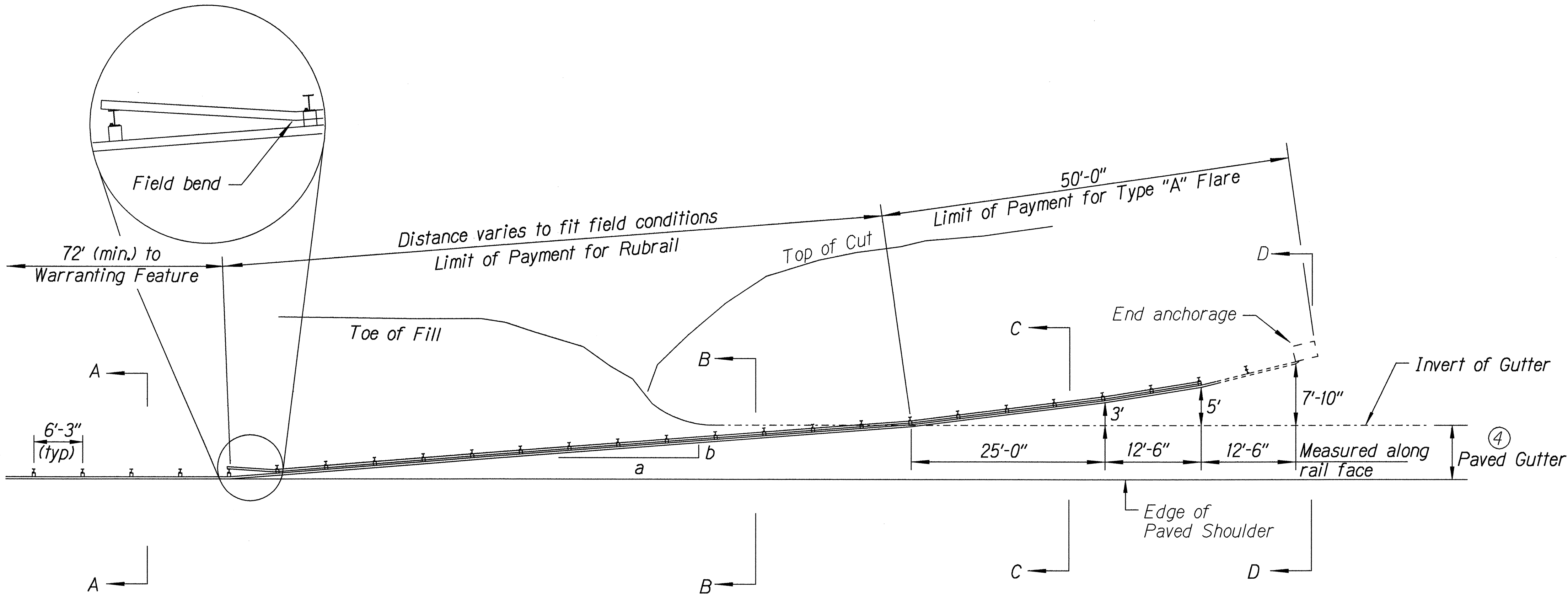


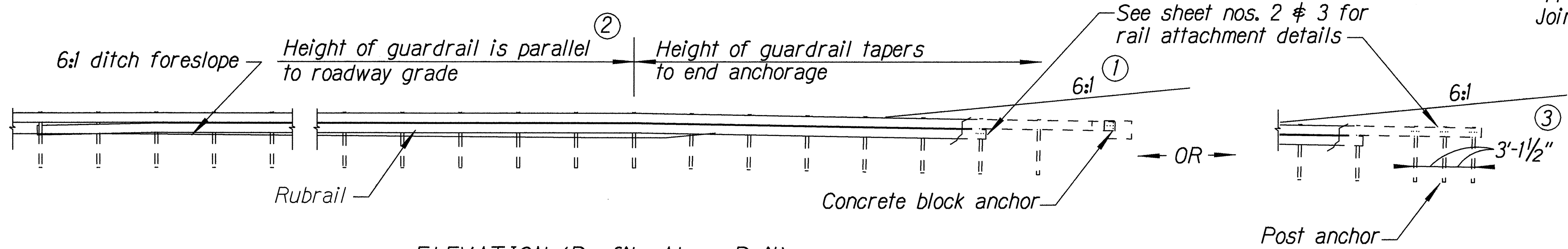
General Notes

1. A 6:1 or flatter slope is desirable. However, a steeper or flatter existing slope may be used.
2. Height of guardrail may be tapered down in elevation to maintain 3'-8" maximum height.
3. All posts are 8'-0" in length from where the guardrail flares away from the shoulder back to the post anchor. Posts for the post anchor are 6'-0" long.
4. Variable Paved Gutter offsets may be used to fit field conditions.
5. The Guardrail Posts shall be located away from the gutter/swale invert.
6. All fasteners, posts, blocks and rail elements shall conform to the latest edition and amendments of "A Guide to Standardized Highway Barrier Rail Hardware," a report prepared and approved by the AASHTO-AGCARTBA Joint Cooperative Committee.

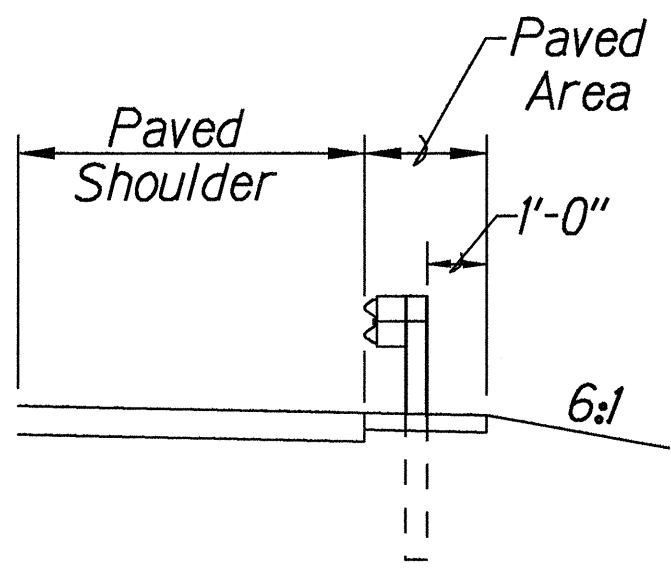


PLAN

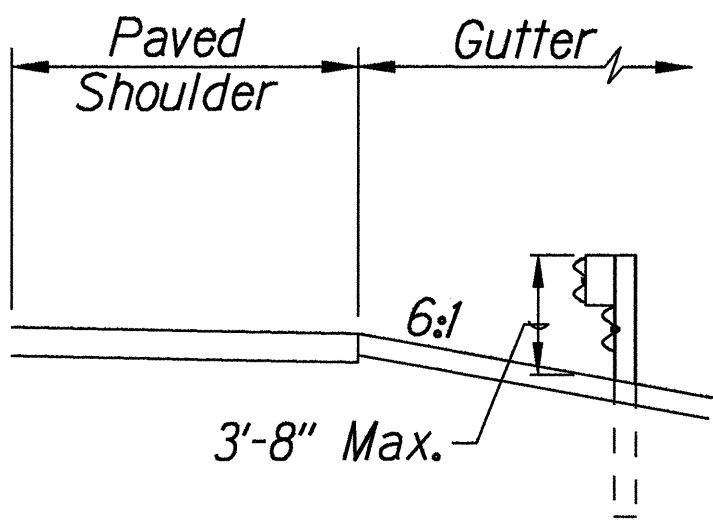
Design speed mph	a:b
68	15:1
62	13:1
56	12:1
50	11:1
43	10:1
37	9:1
31	7:1



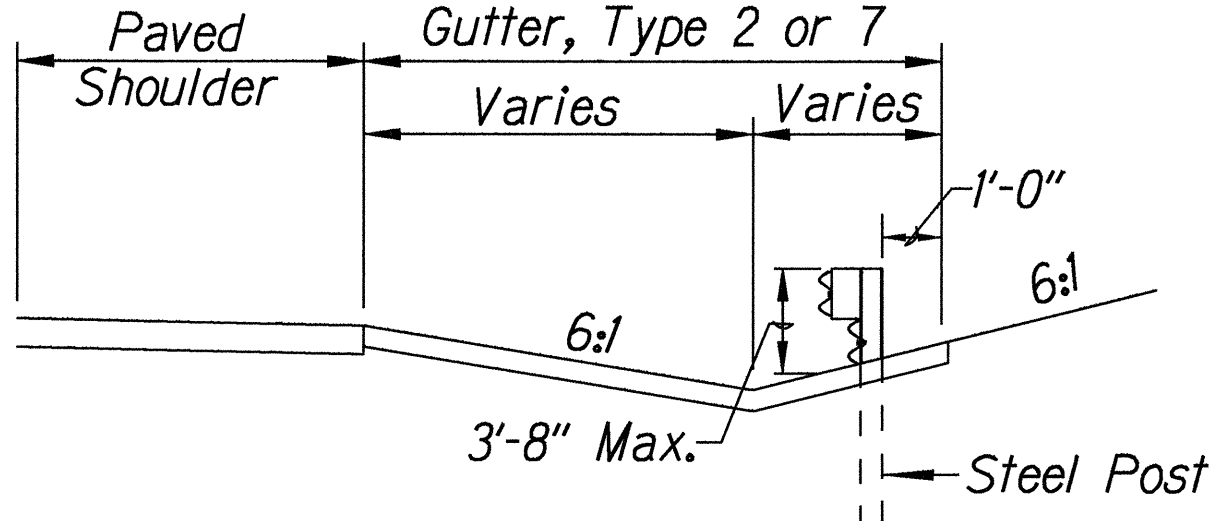
ELEVATION (Profile Along Rail)



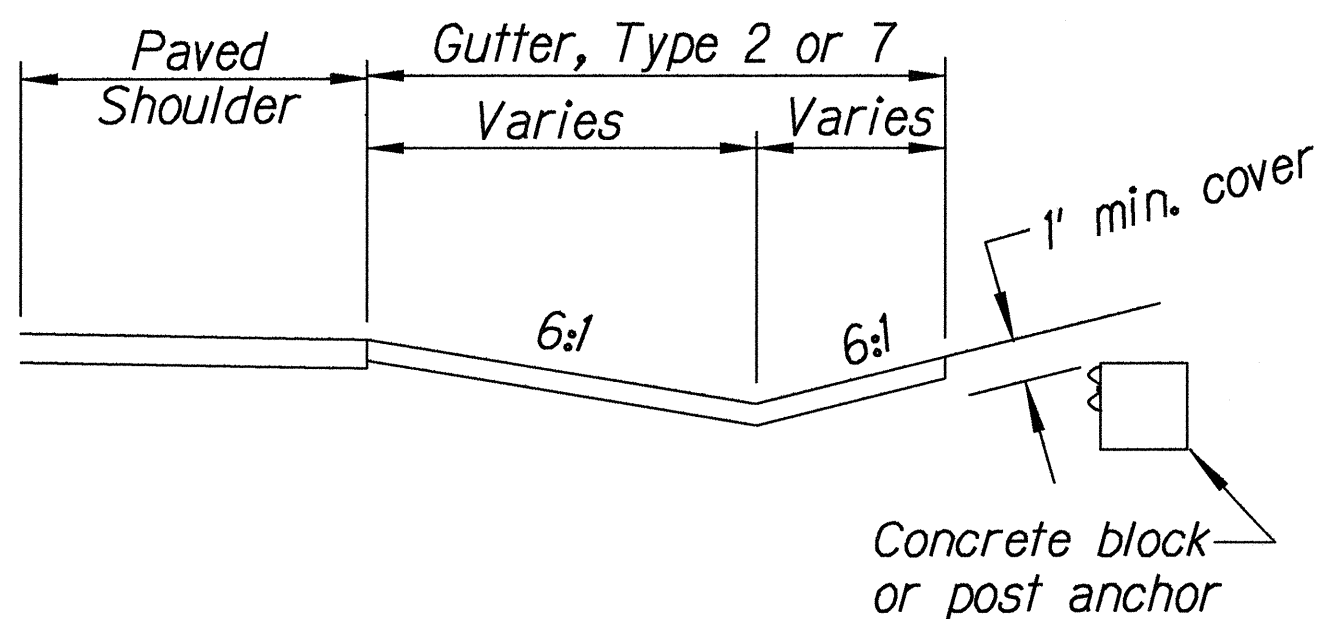
Section A-A



Section B-B
(With Rubrail)



Section C-C
(With Rubrail)



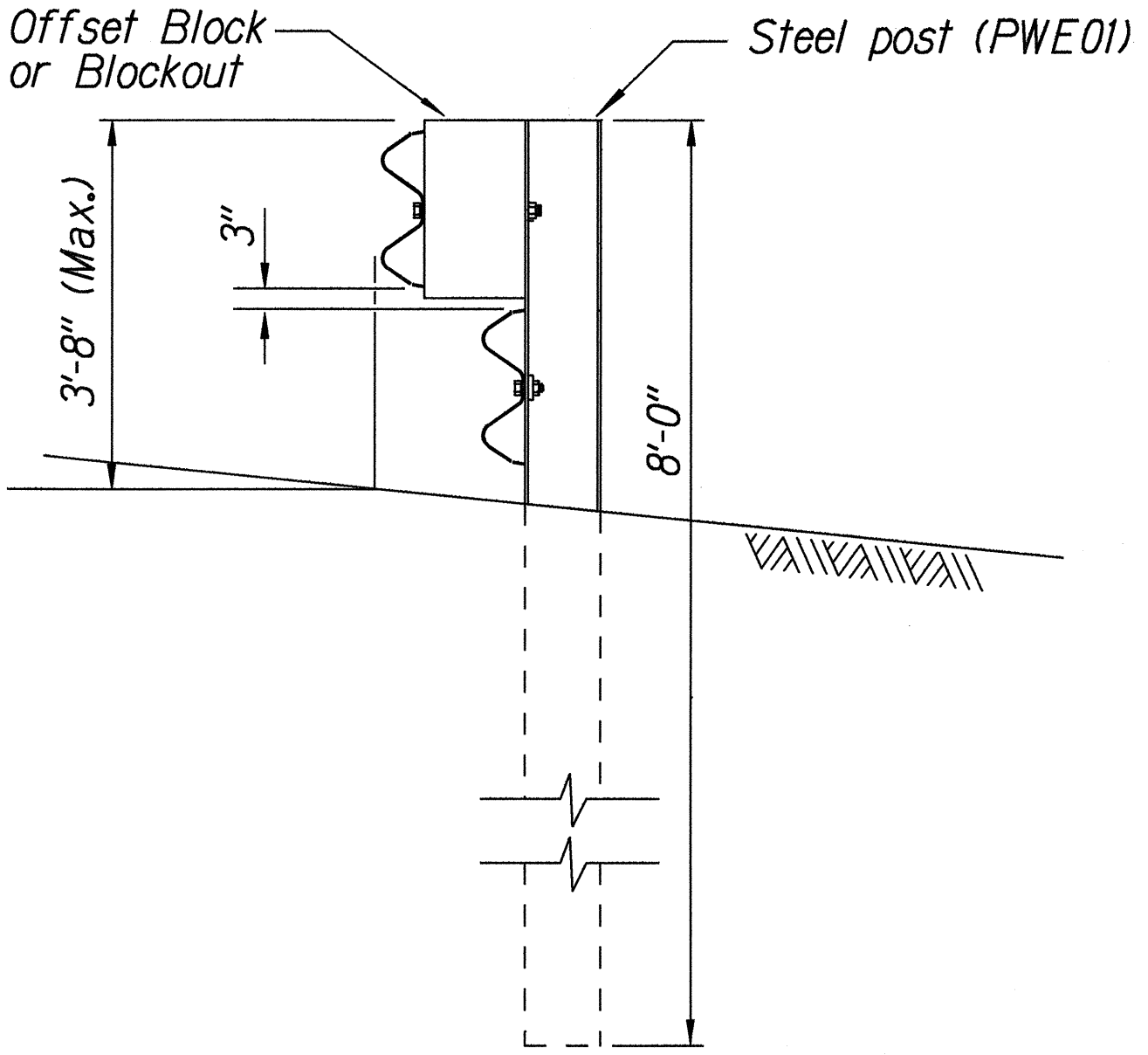
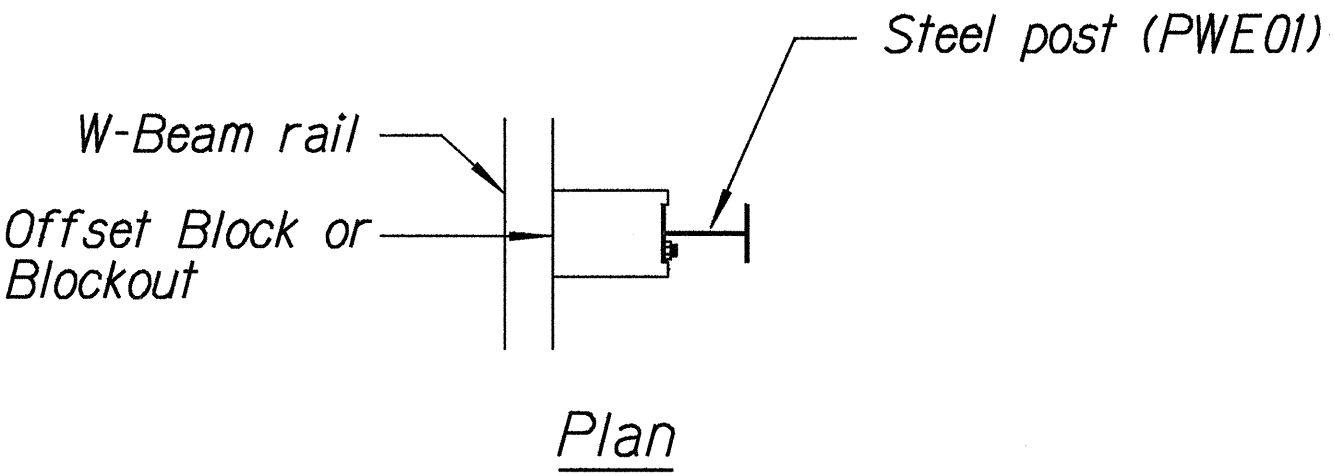
BACKSLOPE ANCHOR TERMINAL (WITH 6:1 PAVED GUTTER AND TYPE "A" FLARE)



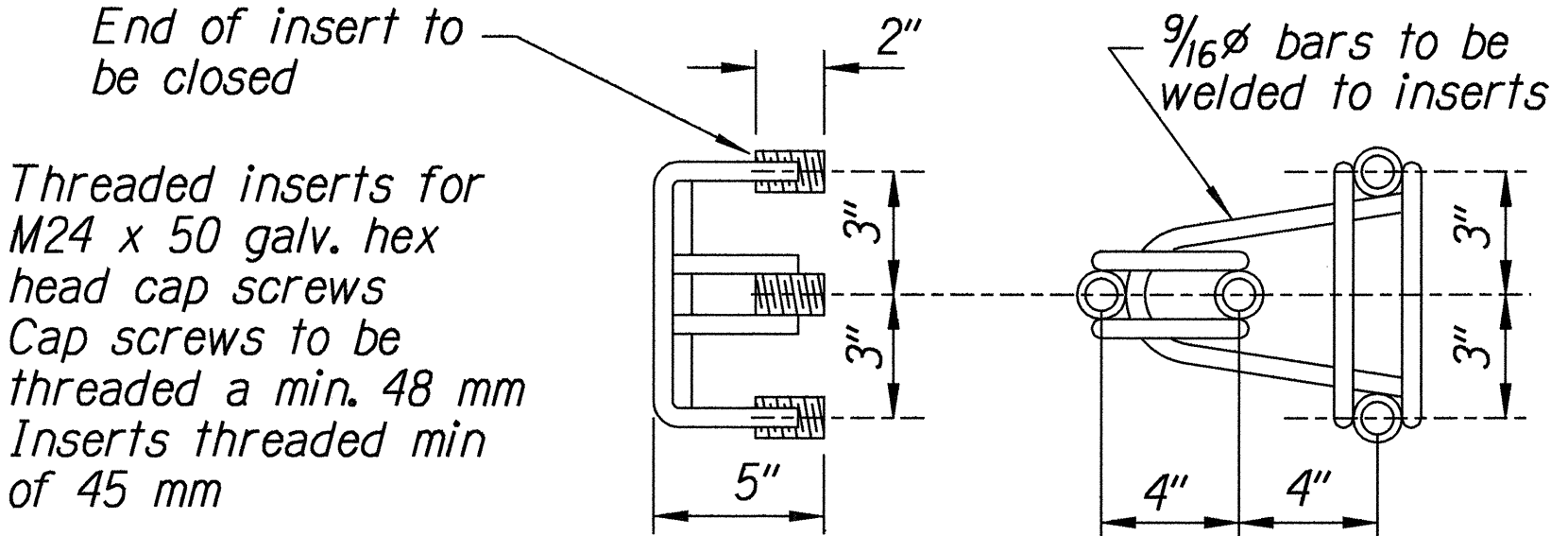
STATE OF HAWAII
DEPARTMENT OF TRANSPORTATION
HIGHWAYS DIVISION

TYPE "A" FLARE
KALAE HIGHWAY
GUARDRAIL & SHOULDER IMPROVEMENTS
Maunaloa Highway to
Kalaupapa Lookout Parking Lot
Fed. Aid Project No. STP-0470(5)
Date: July, 2000

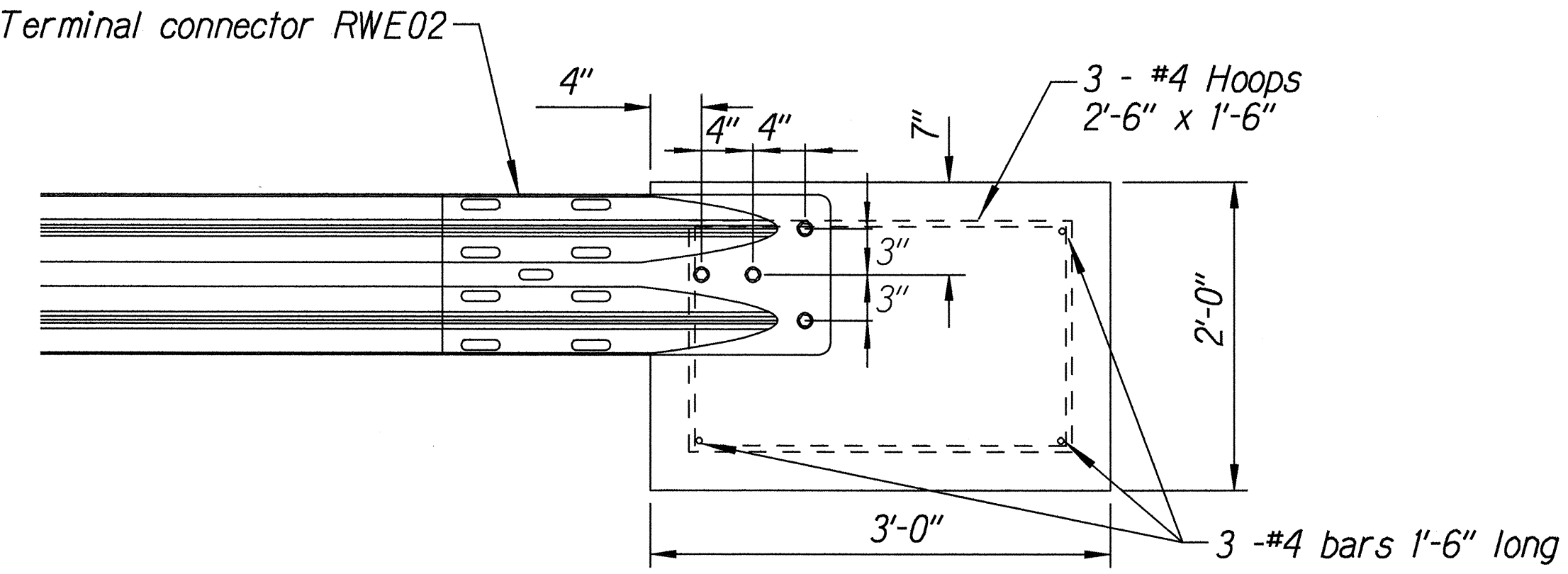
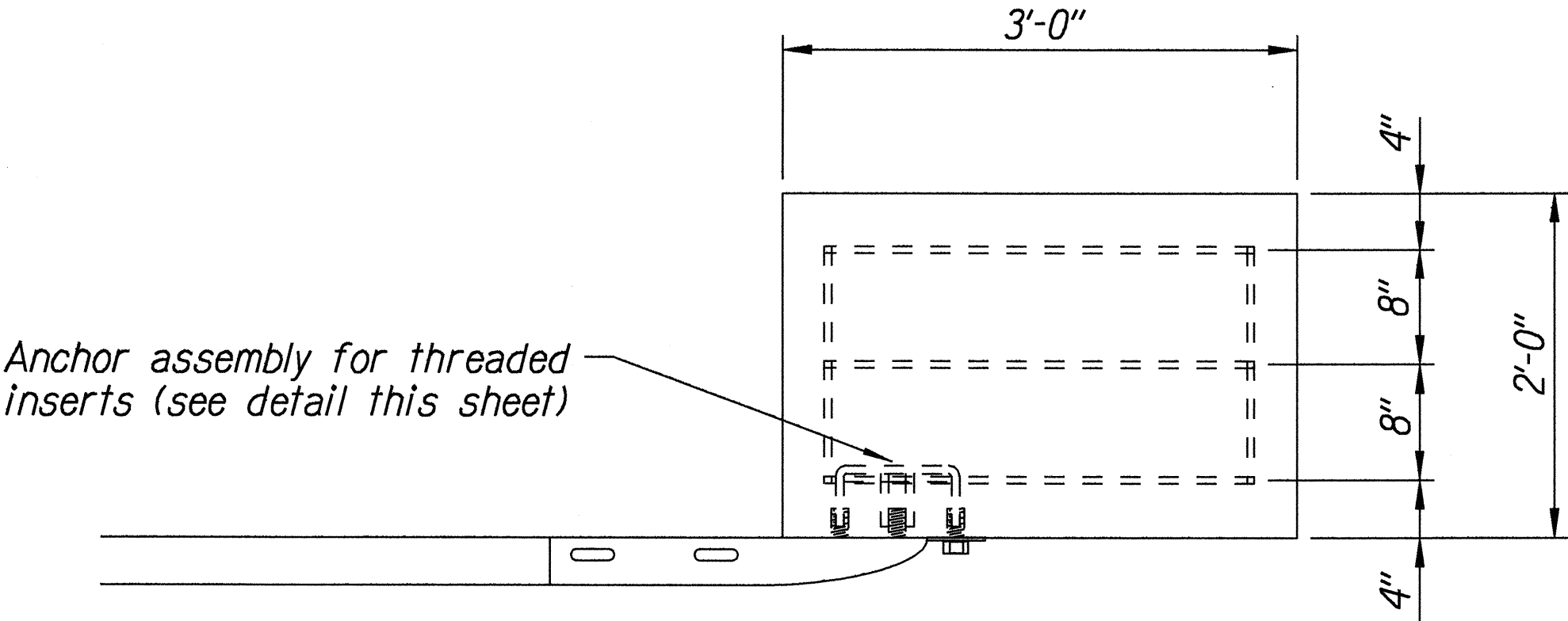
FED. ROAD DIST. NO.	STATE	PROJ. NO.	FISCAL YEAR	SHEET NO.	TOTAL SHEETS
HAWAII	HAW.	STP-0470(5)	2001	14	30



STEEL POST GUARDRAIL
WITH RUBRAIL



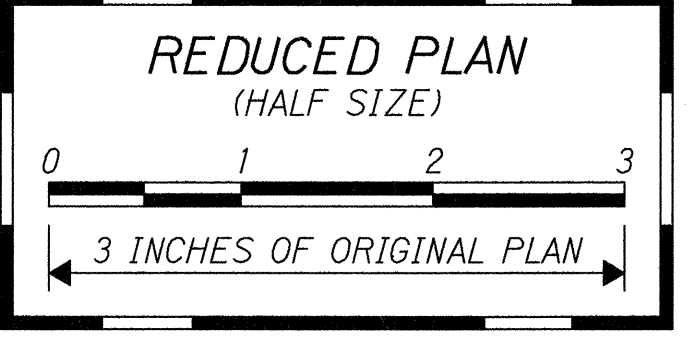
ANCHOR ASSEMBLY
CONCRETE BLOCK ANCHOR



CONCRETE BLOCK ANCHOR
(2' X 2' X 3')

BACKSLOPE ANCHOR TERMINAL END ANCHORAGE DETAILS
TYPE "A" FLARE

Note:
All fasteners, posts, blocks and rail elements shall conform to the latest edition and amendments of "A Guide to Standardized Highway Barrier Rail Hardware," a report prepared and approved by the AASHTO-AGCARTBA Joint Cooperative Committee.



STATE OF HAWAII
DEPARTMENT OF TRANSPORTATION
HIGHWAYS DIVISION
TYPE "A" FLARE
KALAE HIGHWAY
GUARDRAIL & SHOULDER IMPROVEMENTS
Maunaloa Highway to
Kalaupapa Lookout Parking Lot
Fed. Aid Project No. STP-0470(5)
Date: July, 2000
SHEET No. 2 OF 2 SHEETS