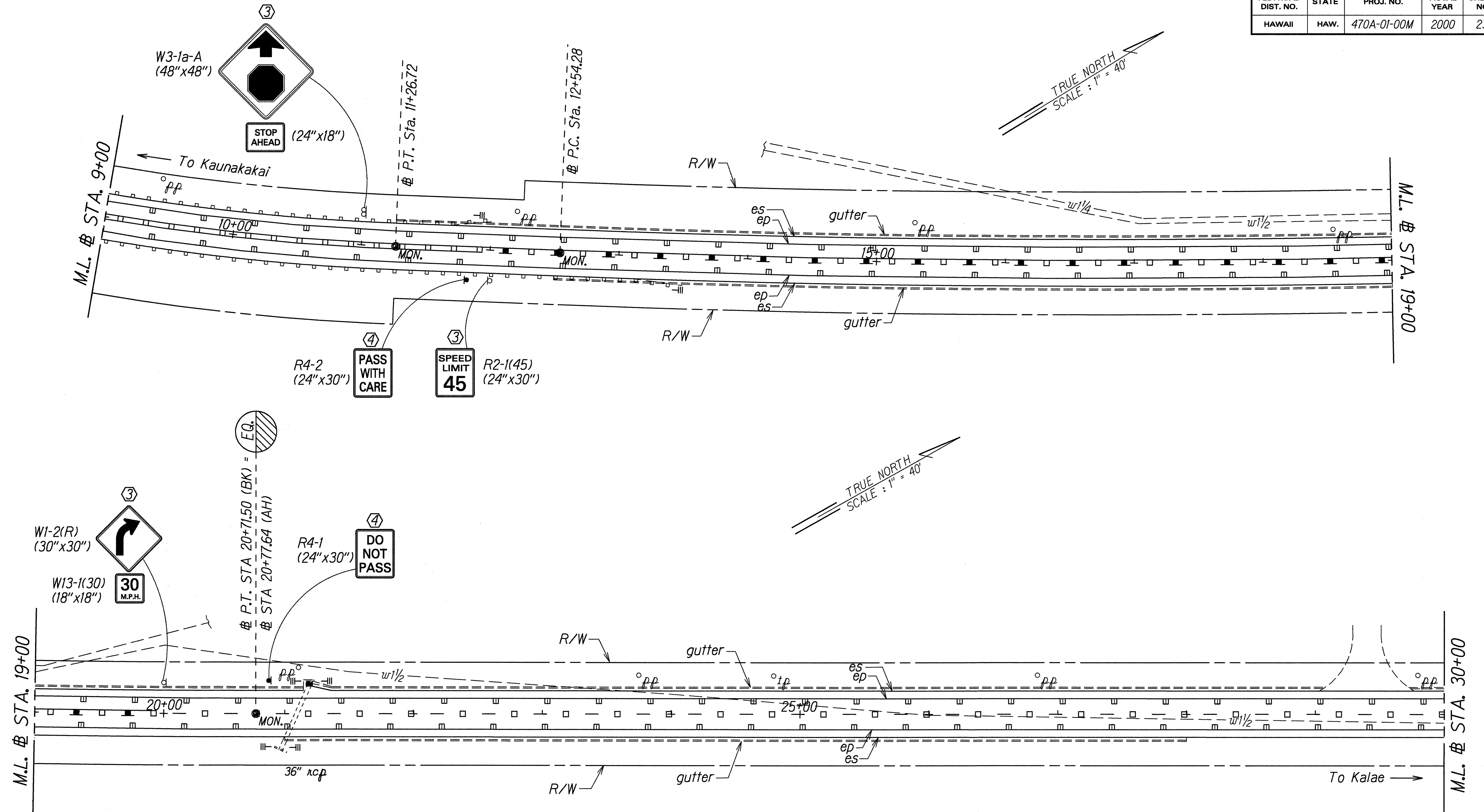


| FED. ROAD DIST. NO. | STATE | PROJ. NO. | FISCAL YEAR | SHEET NO. | TOTAL SHEETS |
|---------------------|-------|-------------|-------------|-----------|--------------|
| HAWAII | HAW. | 470A-01-00M | 2000 | 23 | 39 |



| | |
|---------------|-----------|
| ORIGINAL PLAN | DATE |
| DESIGNED BY | Jan. 2000 |
| QUANTITIES BY | |
| CHECKED BY | |

- KEY:**
- ① Exist. Sign(s) & Post(s) to Remain
 - ② Remove Exist. Sign(s) & Post(s)
 - ③ Remove Exist. & Install New Sign(s) & Post(s)
 - ④ Install New Sign(s) & Post(s)

STATE OF HAWAII
DEPARTMENT OF TRANSPORTATION
HIGHWAYS DIVISION

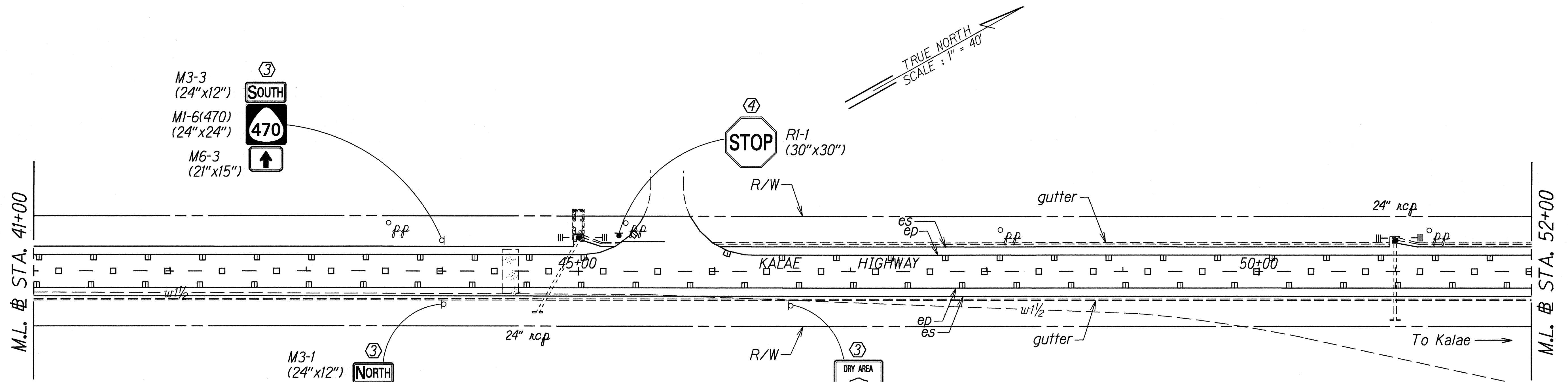
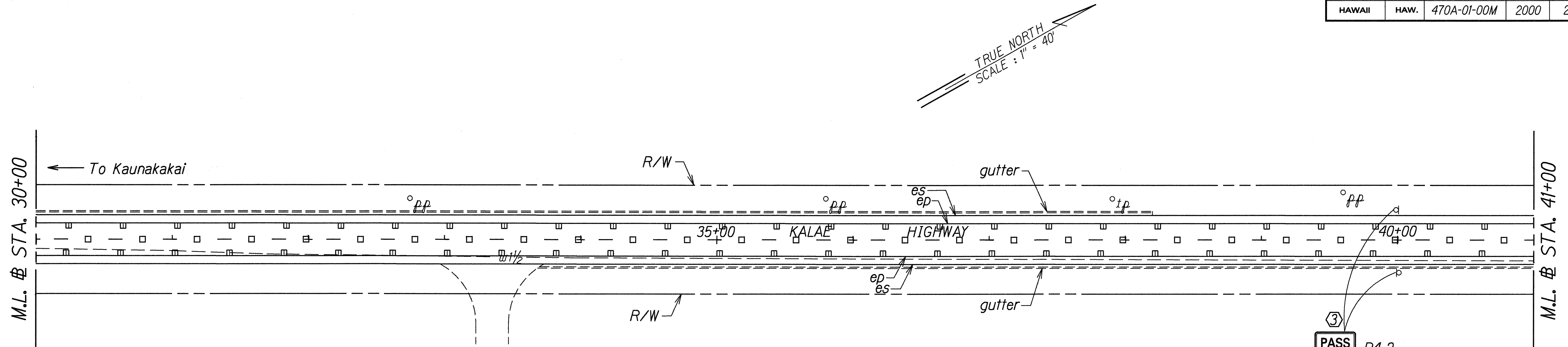
**SIGNING & PAVEMENT
MARKING PLAN**

KALAE HIGHWAY RESURFACING
Maunaloa Highway to
Kalaupapa Lookout Parking Lot
Project No. 470A-01-00M

Scale: 1" = 40' Date: February, 2000

SHEET No. 2 OF 15 SHEETS

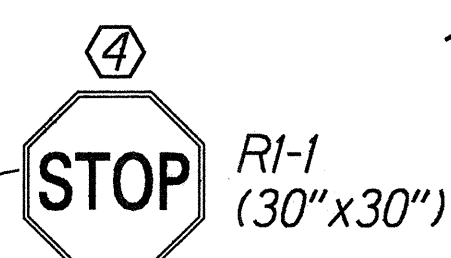
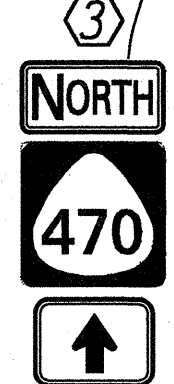
| FED. ROAD DIST. NO. | STATE | PROJ. NO. | FISCAL YEAR | SHEET NO. | TOTAL SHEETS |
|---------------------|-------|-------------|-------------|-----------|--------------|
| HAWAII | HAW. | 470A-01-00M | 2000 | 24 | 39 |



M3-3 (24"x12")
 MI-6(470) (24"x24")
 M6-3 (21"x15")



M3-1 (24"x12")
 MI-6(470) (24"x24")
 M6-3 (21"x15")

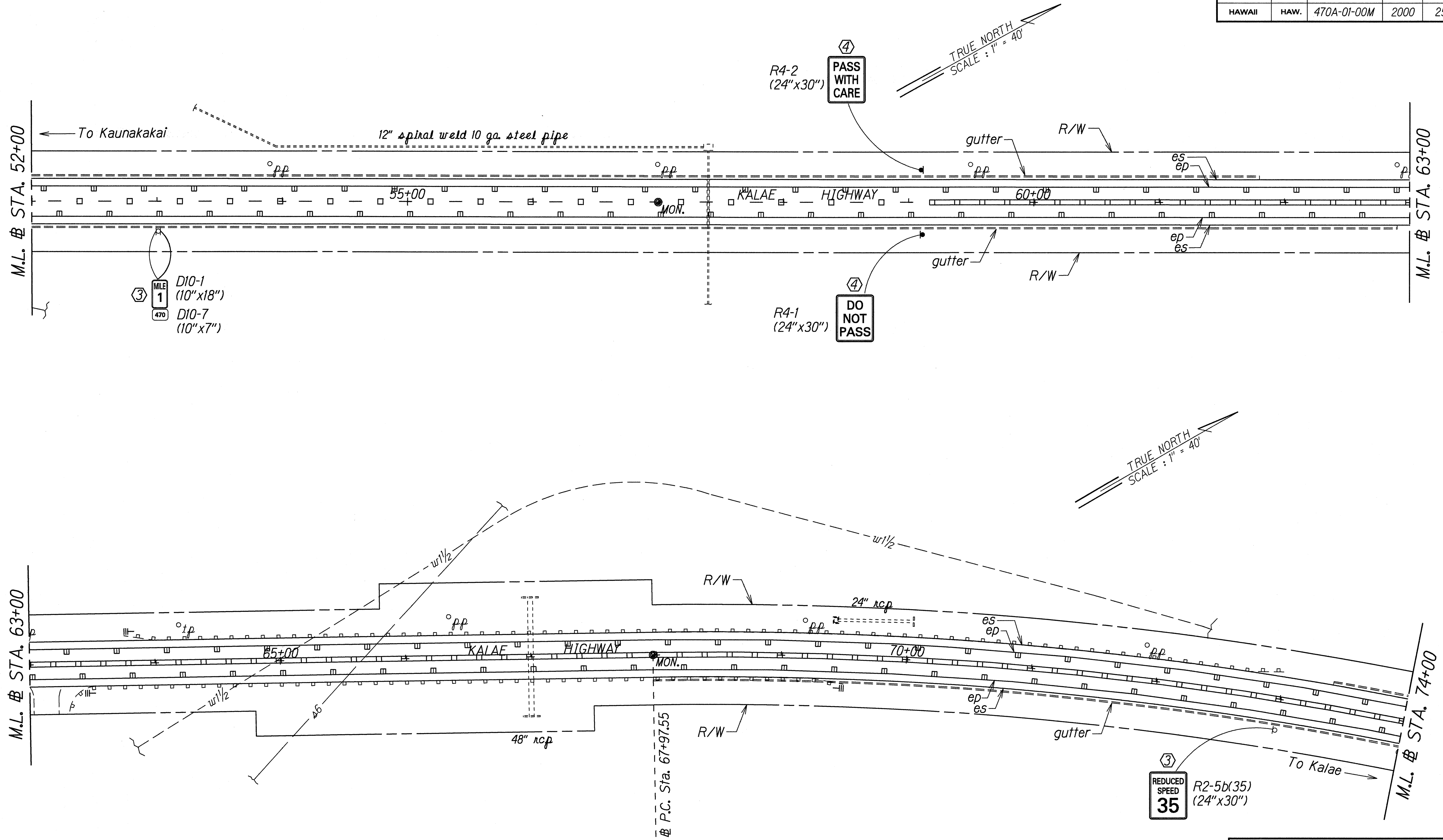


| | |
|---------------|-----------|
| ORIGINAL PLAN | DATE |
| DESIGNED BY | JAN. 2000 |
| DESIGNED BY | |
| QUANTITIES BY | |
| CHECKED BY | |

- KEY:
- ① Exist. Sign(s) & Post(s) to Remain
 - ② Remove Exist. Sign(s) & Post(s)
 - ③ Remove Exist. & Install New Sign(s) & Post(s)
 - ④ Install New Sign(s) & Post(s)

STATE OF HAWAII
 DEPARTMENT OF TRANSPORTATION
 HIGHWAYS DIVISION
SIGNING & PAVEMENT MARKING PLAN
 KALAE HIGHWAY RESURFACING
 Maunaloa Highway to
 Kalaupapa Lookout Parking Lot
 Project No. 470A-01-00M
 Scale: 1" = 40' Date: February, 2000
 SHEET No. 3 OF 15 SHEETS

| FED. ROAD DIST. NO. | STATE | PROJ. NO. | FISCAL YEAR | SHEET NO. | TOTAL SHEETS |
|---------------------|-------|-------------|-------------|-----------|--------------|
| HAWAII | HAW. | 470A-01-00M | 2000 | 25 | 39 |



| | | |
|---------------|------|-----------|
| ORIGINAL PLAN | DATE | Jan. 2000 |
| DESIGNED BY | | |
| QUANTITIES BY | | |
| CHECKED BY | | |

- KEY:**
- ① Exist. Sign(s) & Post(s) to Remain
 - ② Remove Exist. Sign(s) & Post(s)
 - ③ Remove Exist. & Install New Sign(s) & Post(s)
 - ④ Install New Sign(s) & Post(s)

STATE OF HAWAII
DEPARTMENT OF TRANSPORTATION
HIGHWAYS DIVISION

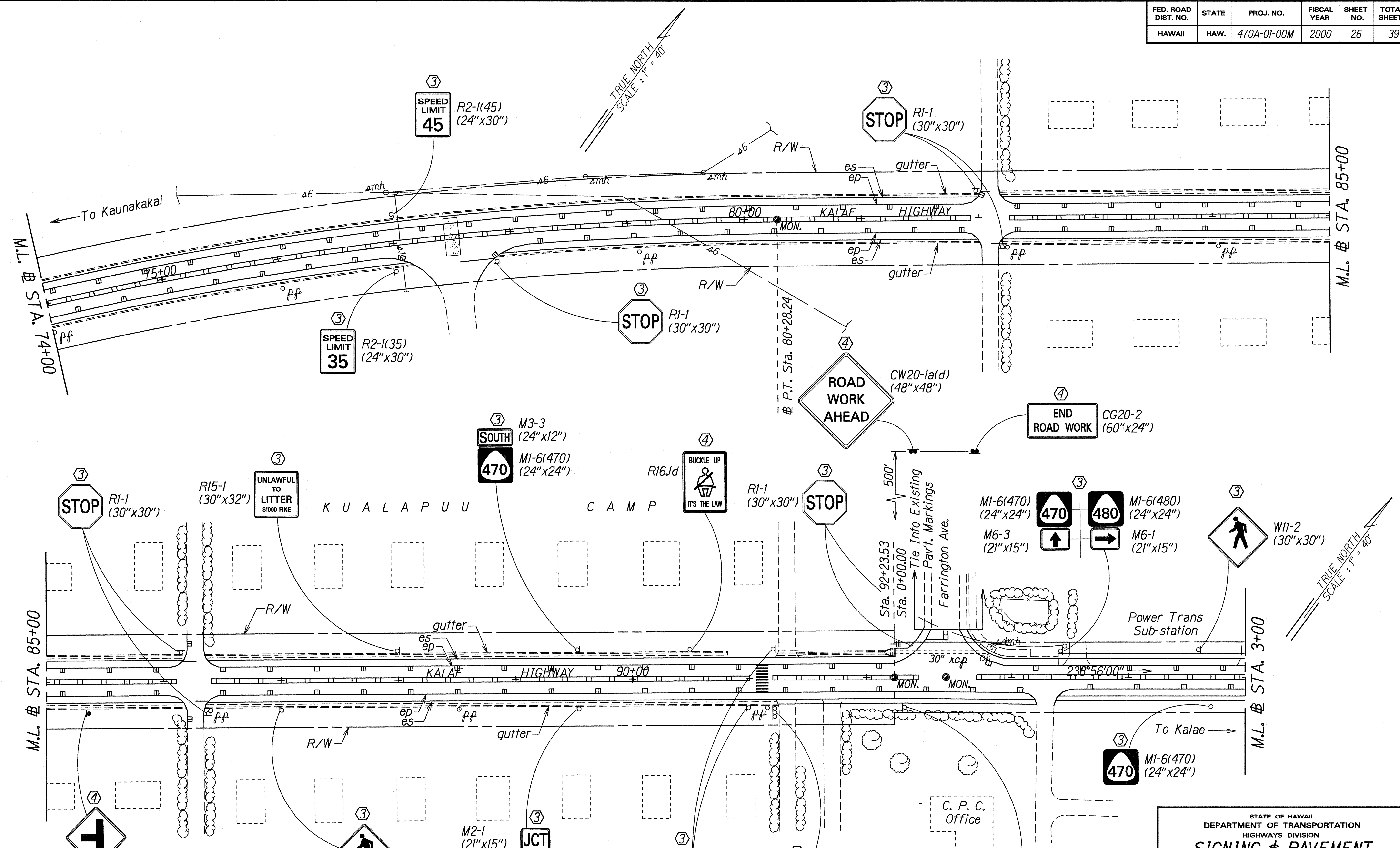
**SIGNING & PAVEMENT
MARKING PLAN**

KALAE HIGHWAY RESURFACING
Maunaloa Highway to
Kalaupapa Lookout Parking Lot
Project No. 470A-01-00M

Scale: 1" = 40' Date: February, 2000

SHEET No. 4 OF 15 SHEETS

| FED. ROAD DIST. NO. | STATE | PROJ. NO. | FISCAL YEAR | SHEET NO. | TOTAL SHEETS |
|---------------------|-------|-------------|-------------|-----------|--------------|
| HAWAII | HAW. | 470A-01-00M | 2000 | 26 | 39 |

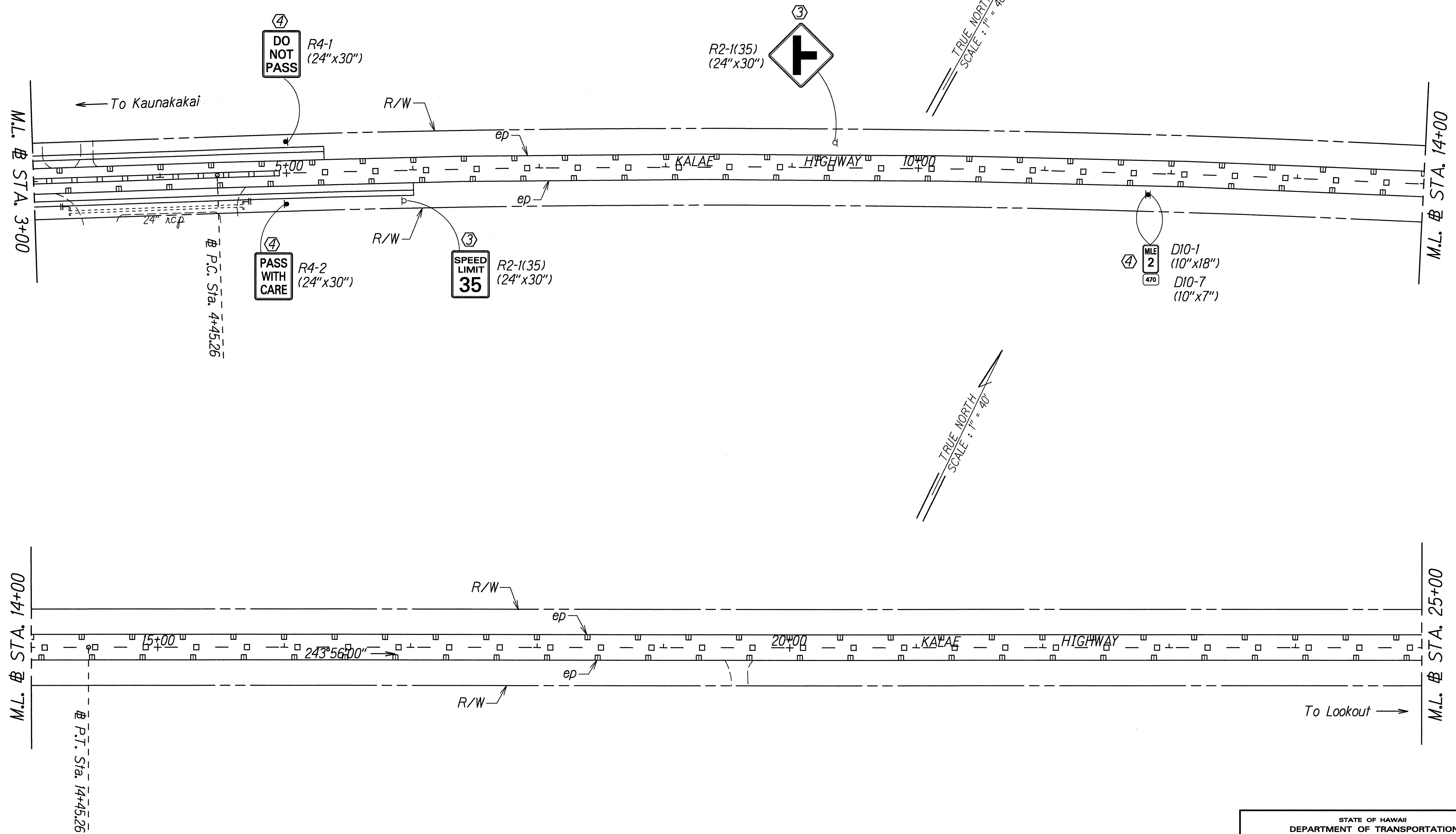


- KEY:**
- ① Exist. Sign(s) & Post(s) to Remain
 - ② Remove Exist. Sign(s) & Post(s)
 - ③ Remove Exist. & Install New Sign(s) & Post(s)
 - ④ Install New Sign(s) & Post(s)

SURVEY PLOTTED BY: DATE: 10/2000
 DESIGNED BY: J. J. [unclear]
 CHECKED BY: [unclear]

STATE OF HAWAII
 DEPARTMENT OF TRANSPORTATION
 HIGHWAYS DIVISION
SIGNING & PAVEMENT MARKING PLAN
 KALAE HIGHWAY RESURFACING
 Maunaloa Highway to
 Kalaupapa Lookout Parking Lot
 Project No. 470A-01-00M
 Scale: 1" = 40' Date: February, 2000

| FED. ROAD DIST. NO. | STATE | PROJ. NO. | FISCAL YEAR | SHEET NO. | TOTAL SHEETS |
|---------------------|-------|-------------|-------------|-----------|--------------|
| HAWAII | HAW. | 470A-01-00M | 2000 | 27 | 39 |



| | |
|---------------|-----------|
| ORIGINAL PLAN | DATE |
| DESIGNED BY | Jan. 2000 |
| TRACED BY | |
| DESIGNED BY | |
| QUANTITIES BY | |
| CHECKED BY | |

KEY:

- ① Exist. Sign(s) & Post(s) to Remain
- ② Remove Exist. Sign(s) & Post(s)
- ③ Remove Exist. & Install New Sign(s) & Post(s)
- ④ Install New Sign(s) & Post(s)

STATE OF HAWAII
DEPARTMENT OF TRANSPORTATION
HIGHWAYS DIVISION

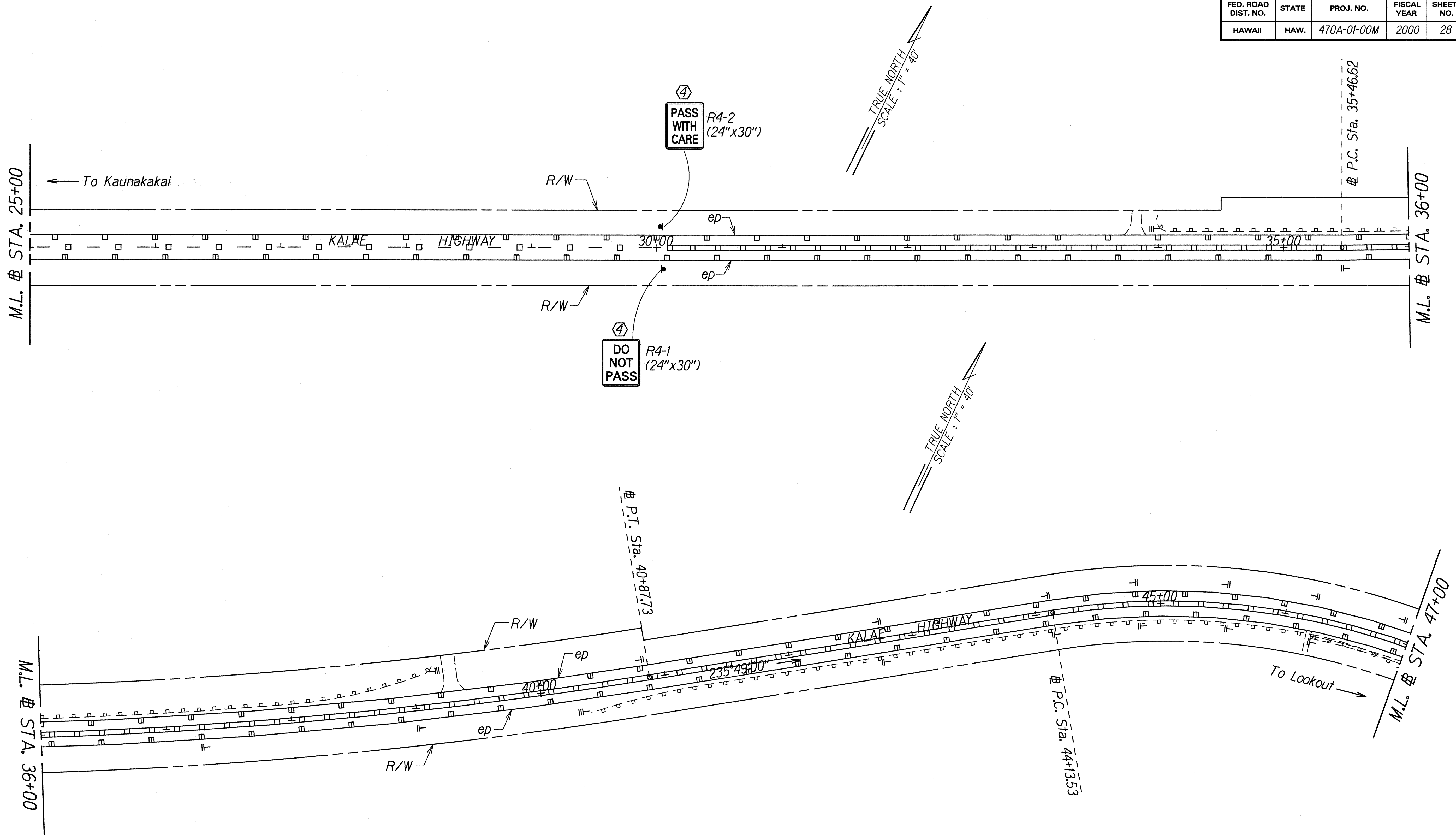
**SIGNING & PAVEMENT
MARKING PLAN**

KALAE HIGHWAY RESURFACING
Maunaloa Highway to
Kalaupapa Lookout Parking Lot
Project No. 470A-01-00M

Scale: 1" = 40' Date: February, 2000

SHEET No. 6 OF 15 SHEETS

| FED. ROAD DIST. NO. | STATE | PROJ. NO. | FISCAL YEAR | SHEET NO. | TOTAL SHEETS |
|---------------------|-------|-------------|-------------|-----------|--------------|
| HAWAII | HAW. | 470A-01-00M | 2000 | 28 | 39 |



| | |
|---------------|------|
| ORIGINAL PLAN | DATE |
| NOTED BY | DATE |
| DESIGNED BY | DATE |
| QUANTITIES BY | DATE |
| CHECKED BY | DATE |

- KEY:**
- ① Exist. Sign(s) & Post(s) to Remain
 - ② Remove Exist. Sign(s) & Post(s)
 - ③ Remove Exist. & Install New Sign(s) & Post(s)
 - ④ Install New Sign(s) & Post(s)

STATE OF HAWAII
DEPARTMENT OF TRANSPORTATION
HIGHWAYS DIVISION

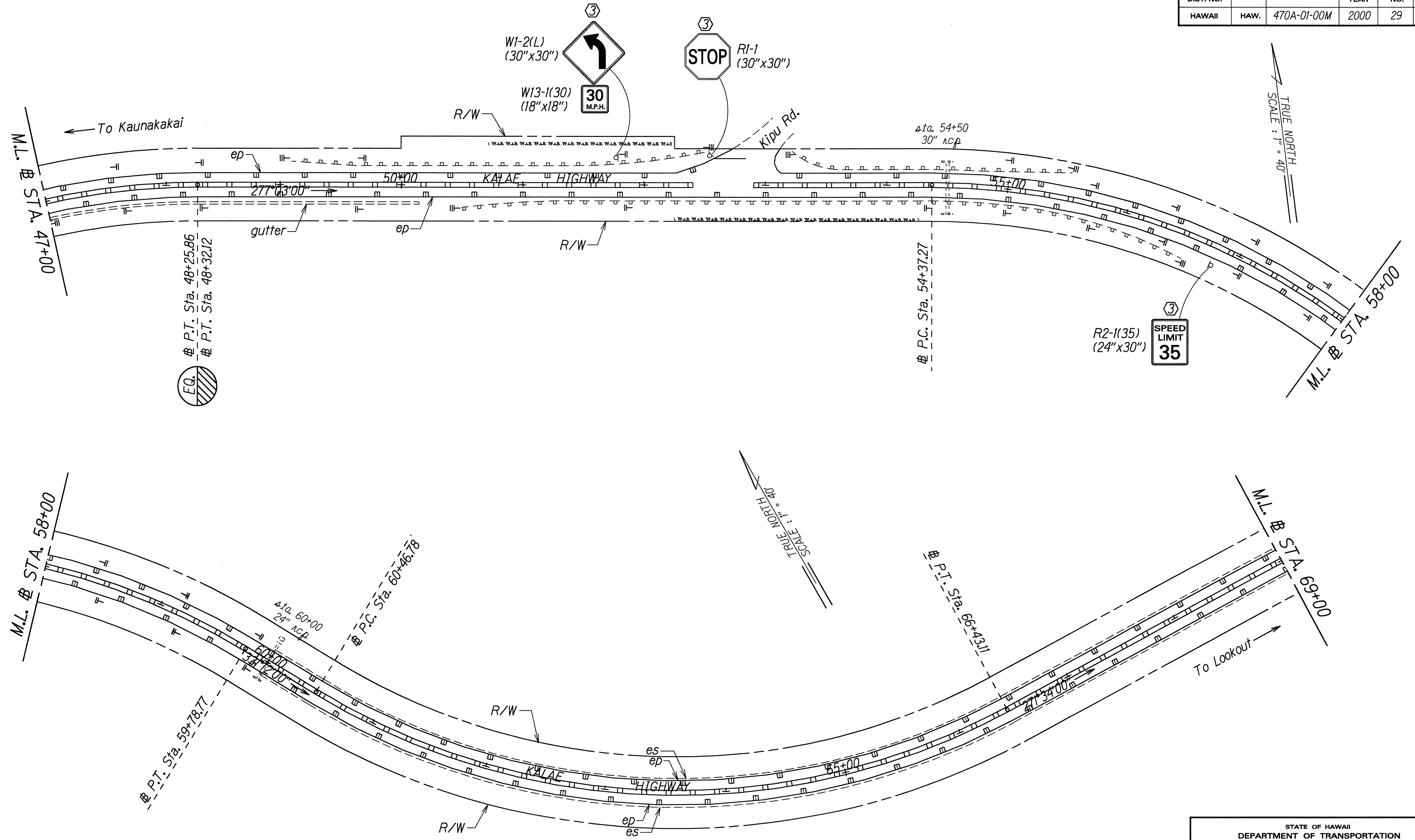
**SIGNING & PAVEMENT
MARKING PLAN**

**KALAE HIGHWAY RESURFACING
Maunaloa Highway to
Kalaupapa Lookout Parking Lot
Project No. 470A-01-00M**

Scale: 1" = 40' Date: February, 2000

SHEET No. 7 OF 15 SHEETS

| FED. ROAD DIST. NO. | STATE | PROJ. NO. | FISCAL YEAR | SHEET NO. | TOTAL SHEETS |
|---------------------|-------|-------------|-------------|-----------|--------------|
| HAWAII | HAW. | 470A-01-00M | 2000 | 29 | 39 |



| | | |
|---------------|-------------|------|
| ORIGINAL PLAN | DESIGNED BY | DATE |
| NOTE BOOK | DESIGNED BY | DATE |
| QUANTITIES BY | CHECKED BY | |
| CHECKED BY | | |

- KEY:
- ① Exist. Sign(s) & Post(s) to Remain
 - ② Remove Exist. Sign(s) & Post(s)
 - ③ Remove Exist. & Install New Sign(s) & Post(s)
 - ④ Install New Sign(s) & Post(s)

STATE OF HAWAII
DEPARTMENT OF TRANSPORTATION
HIGHWAYS DIVISION

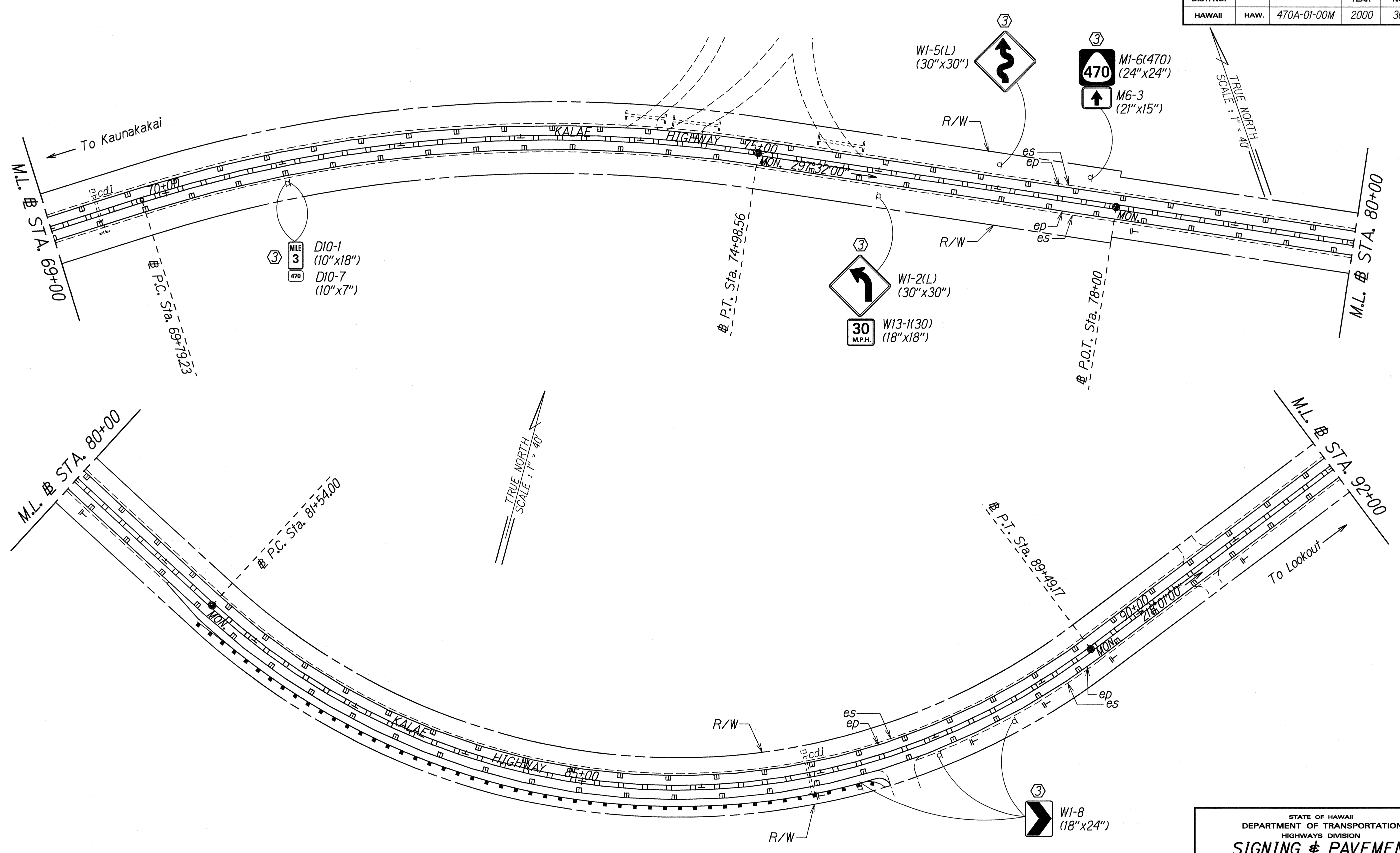
**SIGNING & PAVEMENT
MARKING PLAN**

KALAE HIGHWAY RESURFACING
Maunaloa Highway to
Kalaupapa Lookout Parking Lot
Project No. 470A-01-00M

Scale: 1" = 40' Date: February, 2000

SHEET No. 8 OF 15 SHEETS

| FED. ROAD DIST. NO. | STATE | PROJ. NO. | FISCAL YEAR | SHEET NO. | TOTAL SHEETS |
|---------------------|-------|-------------|-------------|-----------|--------------|
| HAWAII | HAW. | 470A-01-00M | 2000 | 30 | 39 |



- KEY:**
- ① Exist. Sign(s) & Post(s) to Remain
 - ② Remove Exist. Sign(s) & Post(s)
 - ③ Remove Exist. & Install New Sign(s) & Post(s)
 - ④ Install New Sign(s) & Post(s)

STATE OF HAWAII
DEPARTMENT OF TRANSPORTATION
HIGHWAYS DIVISION

**SIGNING & PAVEMENT
MARKING PLAN**

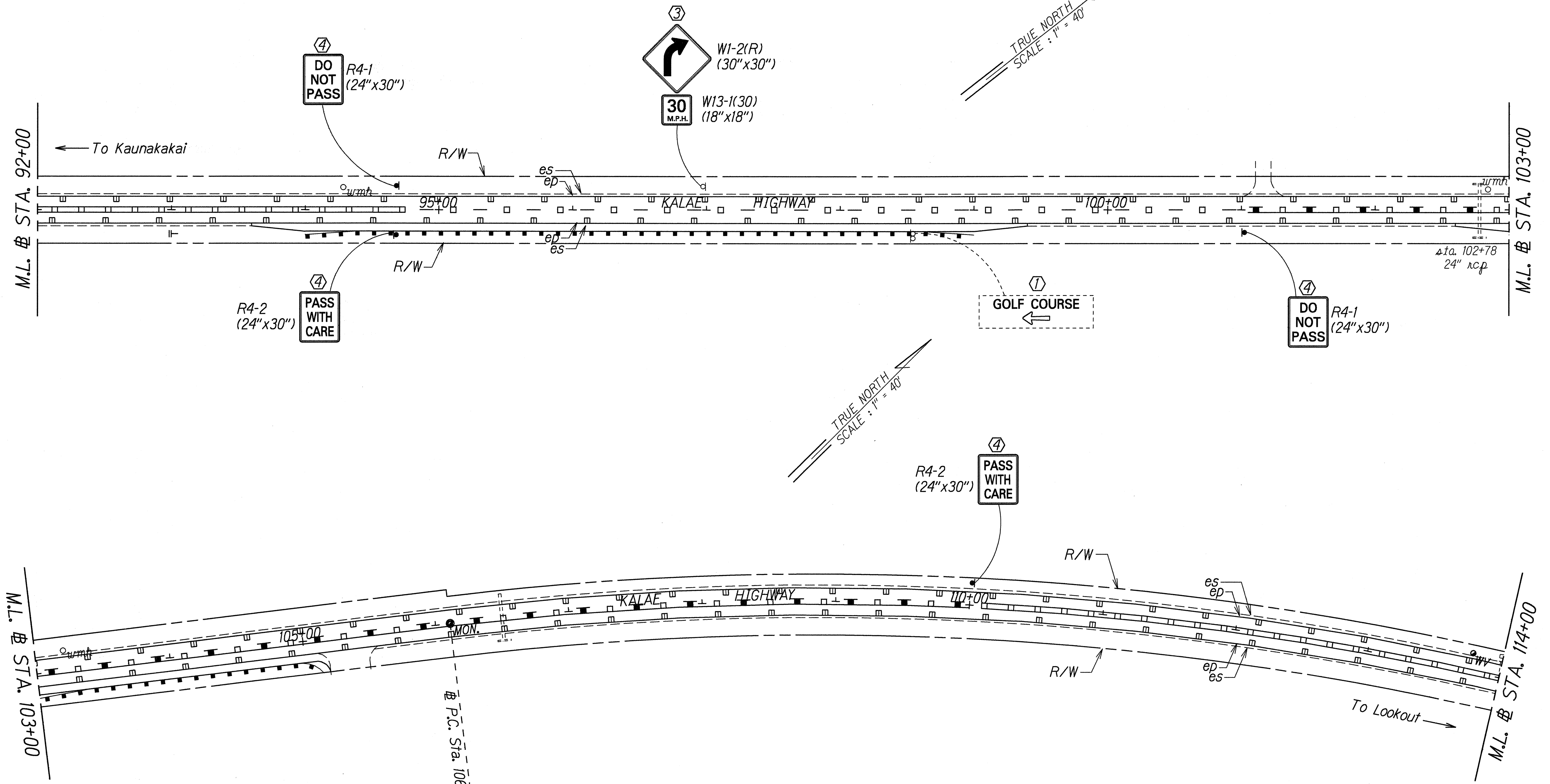
**KALAE HIGHWAY RESURFACING
Maunaloa Highway to
Kalaupapa Lookout Parking Lot
Project No. 470A-01-00M**

Scale: 1" = 40' Date: February, 2000

SHEET No. 9 OF 15 SHEETS

| | |
|---------------|-----------|
| ORIGINAL PLAN | DATE |
| DESIGNED BY | Jan. 2000 |
| TRACED BY | |
| DESIGNED BY | |
| QUANTITIES BY | |
| CHECKED BY | |

| FED. ROAD DIST. NO. | STATE | PROJ. NO. | FISCAL YEAR | SHEET NO. | TOTAL SHEETS |
|---------------------|-------|-------------|-------------|-----------|--------------|
| HAWAII | HAW. | 470A-01-00M | 2000 | 31 | 39 |



| | |
|---------------|-----------|
| ORIGINAL PLAN | DATE |
| DESIGNED BY | Jan. 2000 |
| QUANTITIES BY | |
| CHECKED BY | |

- KEY:**
- ① Exist. Sign(s) & Post(s) to Remain
 - ② Remove Exist. Sign(s) & Post(s)
 - ③ Remove Exist. & Install New Sign(s) & Post(s)
 - ④ Install New Sign(s) & Post(s)

STATE OF HAWAII
DEPARTMENT OF TRANSPORTATION
HIGHWAYS DIVISION

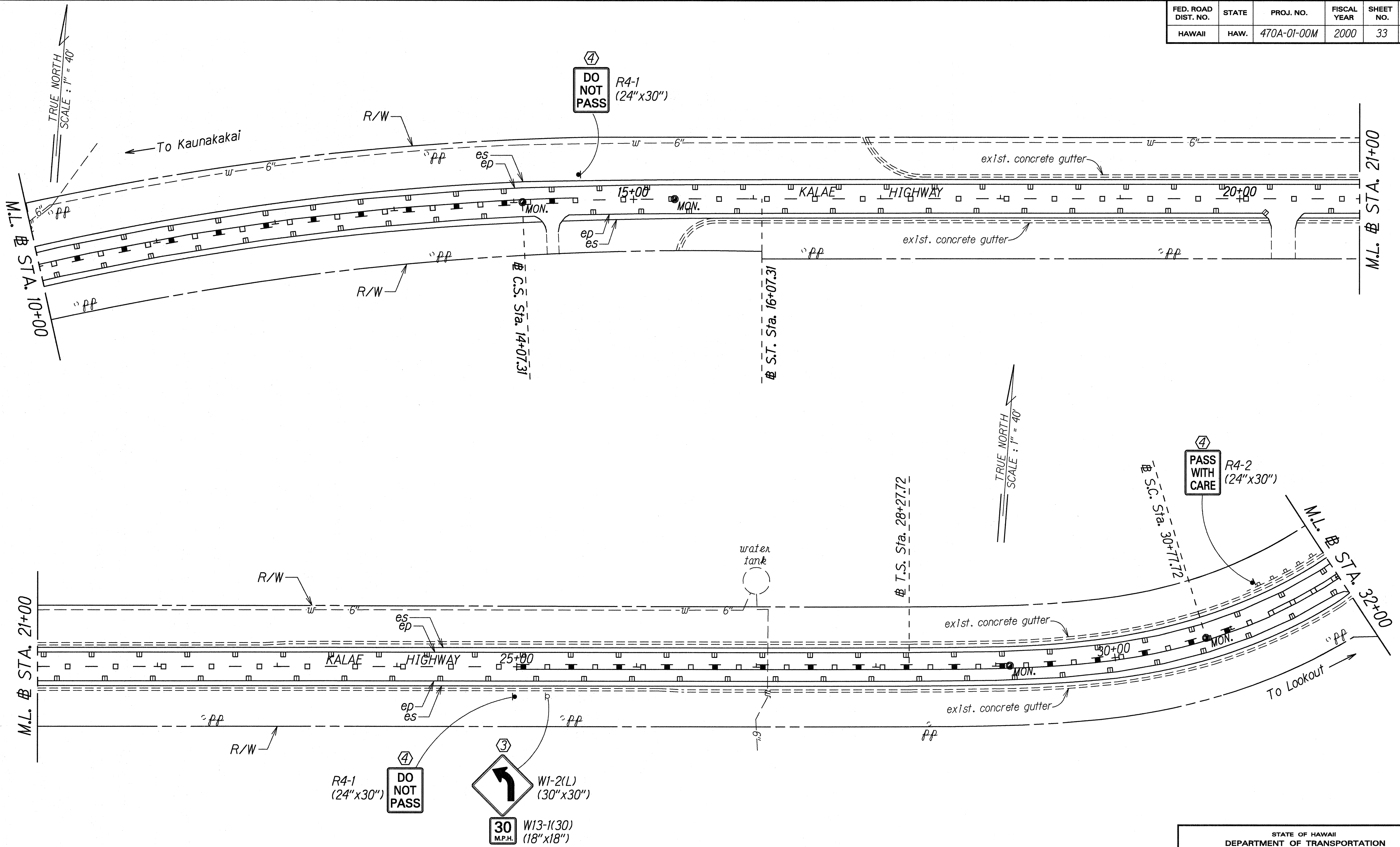
**SIGNING & PAVEMENT
MARKING PLAN**

KALAE HIGHWAY RESURFACING
Maunaloa Highway to
Kalaupapa Lookout Parking Lot
Project No. 470A-01-00M

Scale: 1" = 40' Date: February, 2000

SHEET No. 10 OF 15 SHEETS

| FED. ROAD DIST. NO. | STATE | PROJ. NO. | FISCAL YEAR | SHEET NO. | TOTAL SHEETS |
|---------------------|-------|-------------|-------------|-----------|--------------|
| HAWAII | HAW. | 470A-01-00M | 2000 | 33 | 39 |



| | |
|---------------|-----------|
| ORIGINAL PLAN | DATE |
| DESIGNED BY | Jan. 2000 |
| DESIGNED BY | |
| QUANTITIES BY | |
| CHECKED BY | |

- KEY:**
- ① Exist. Sign(s) & Post(s) to Remain
 - ② Remove Exist. Sign(s) & Post(s)
 - ③ Remove Exist. & Install New Sign(s) & Post(s)
 - ④ Install New Sign(s) & Post(s)

STATE OF HAWAII
DEPARTMENT OF TRANSPORTATION
HIGHWAYS DIVISION

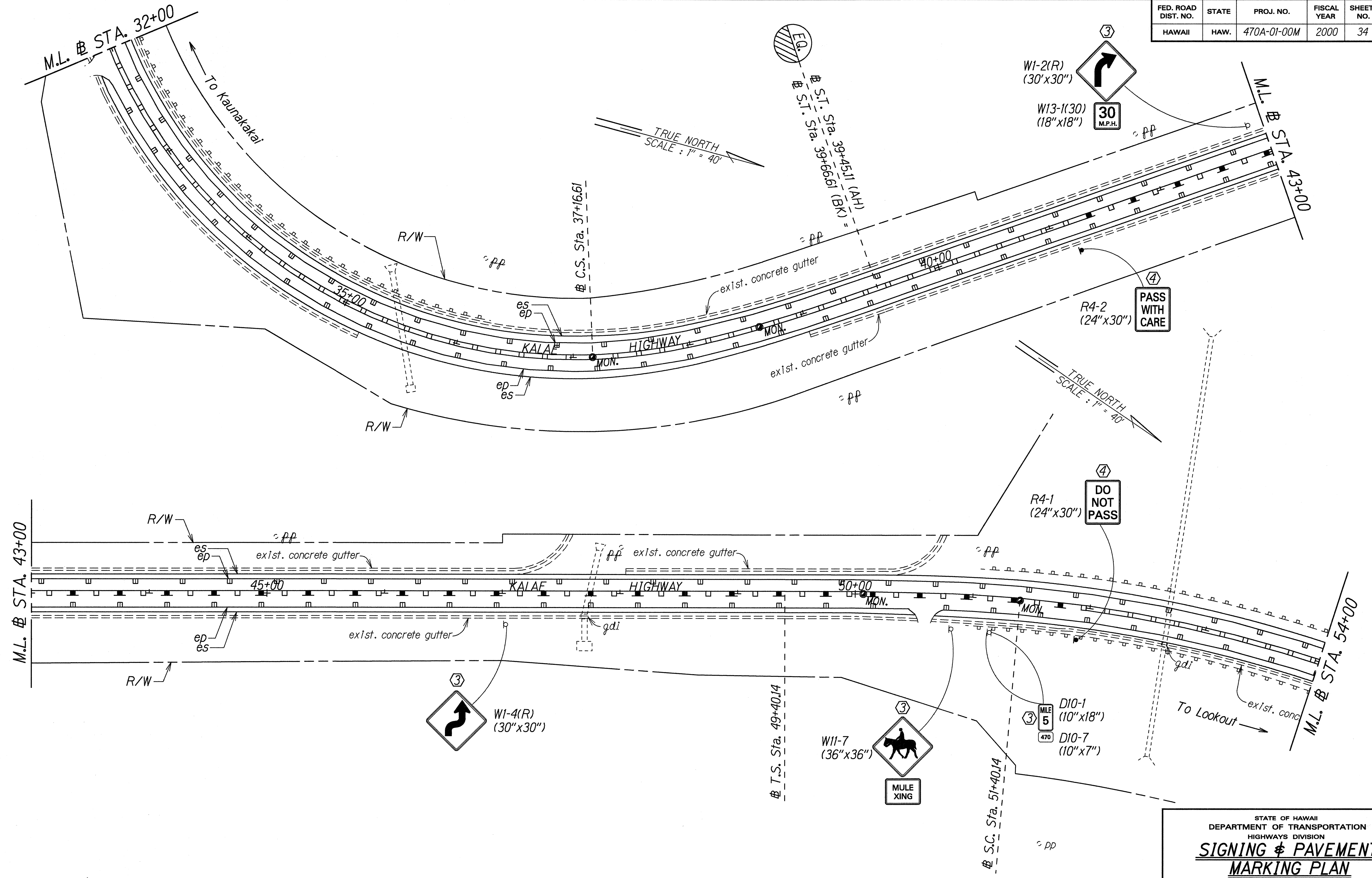
**SIGNING & PAVEMENT
MARKING PLAN**

KALAE HIGHWAY RESURFACING
Maunaloa Highway to
Kalaupapa Lookout Parking Lot
Project No. 470A-01-00M

Scale: 1" = 40' Date: February, 2000

SHEET No. 12 OF 15 SHEETS

| FED. ROAD DIST. NO. | STATE | PROJ. NO. | FISCAL YEAR | SHEET NO. | TOTAL SHEETS |
|---------------------|-------|-------------|-------------|-----------|--------------|
| HAWAII | HAW. | 470A-01-00M | 2000 | 34 | 39 |



| | |
|---------------|-----------|
| ORIGINAL PLAN | DATE |
| DESIGNED BY | Jul. 2000 |
| TRACED BY | |
| DESIGNED BY | |
| QUANTITIES BY | |
| CHECKED BY | |

- KEY:**
- ① Exist. Sign(s) & Post(s) to Remain
 - ② Remove Exist. Sign(s) & Post(s)
 - ③ Remove Exist. & Install New Sign(s) & Post(s)
 - ④ Install New Sign(s) & Post(s)

STATE OF HAWAII
DEPARTMENT OF TRANSPORTATION
HIGHWAYS DIVISION

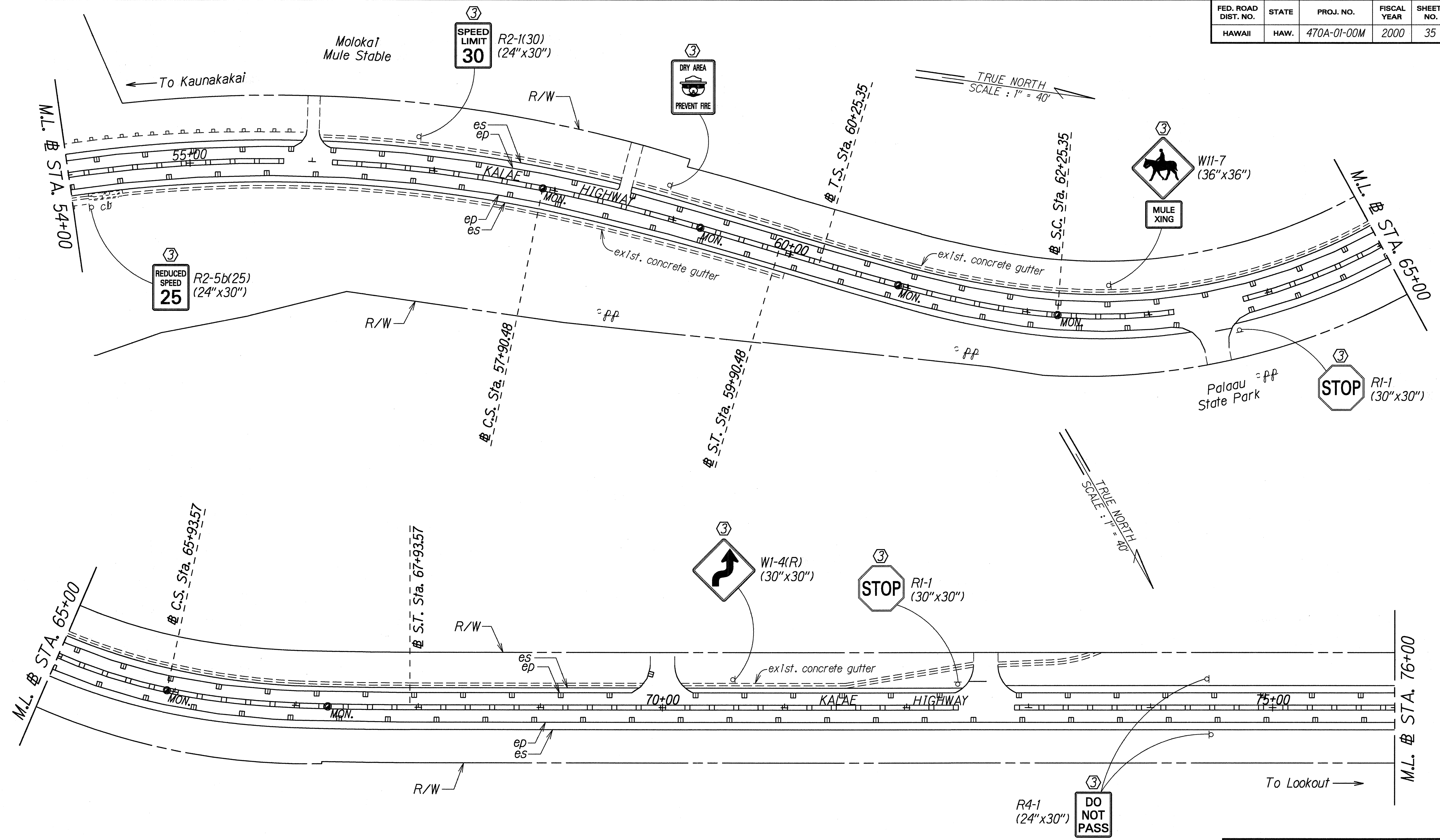
**SIGNING & PAVEMENT
MARKING PLAN**

KALAE HIGHWAY RESURFACING
Maunaloa Highway to
Kalaupapa Lookout Parking Lot
Project No. 470A-01-00M

Scale: 1" = 40' Date: February, 2000

SHEET No. 13 OF 15 SHEETS

| FED. ROAD DIST. NO. | STATE | PROJ. NO. | FISCAL YEAR | SHEET NO. | TOTAL SHEETS |
|---------------------|-------|-------------|-------------|-----------|--------------|
| HAWAII | HAW. | 470A-01-00M | 2000 | 35 | 39 |



| | |
|---------------|------|
| ORIGINAL PLAN | DATE |
| NOTES | BY |
| DESIGNED BY | DATE |
| QUANTITIES BY | DATE |
| CHECKED BY | DATE |

- KEY:**
- ① Exist. Sign(s) & Post(s) to Remain
 - ② Remove Exist. Sign(s) & Post(s)
 - ③ Remove Exist. & Install New Sign(s) & Post(s)
 - ④ Install New Sign(s) & Post(s)

STATE OF HAWAII
DEPARTMENT OF TRANSPORTATION
HIGHWAYS DIVISION

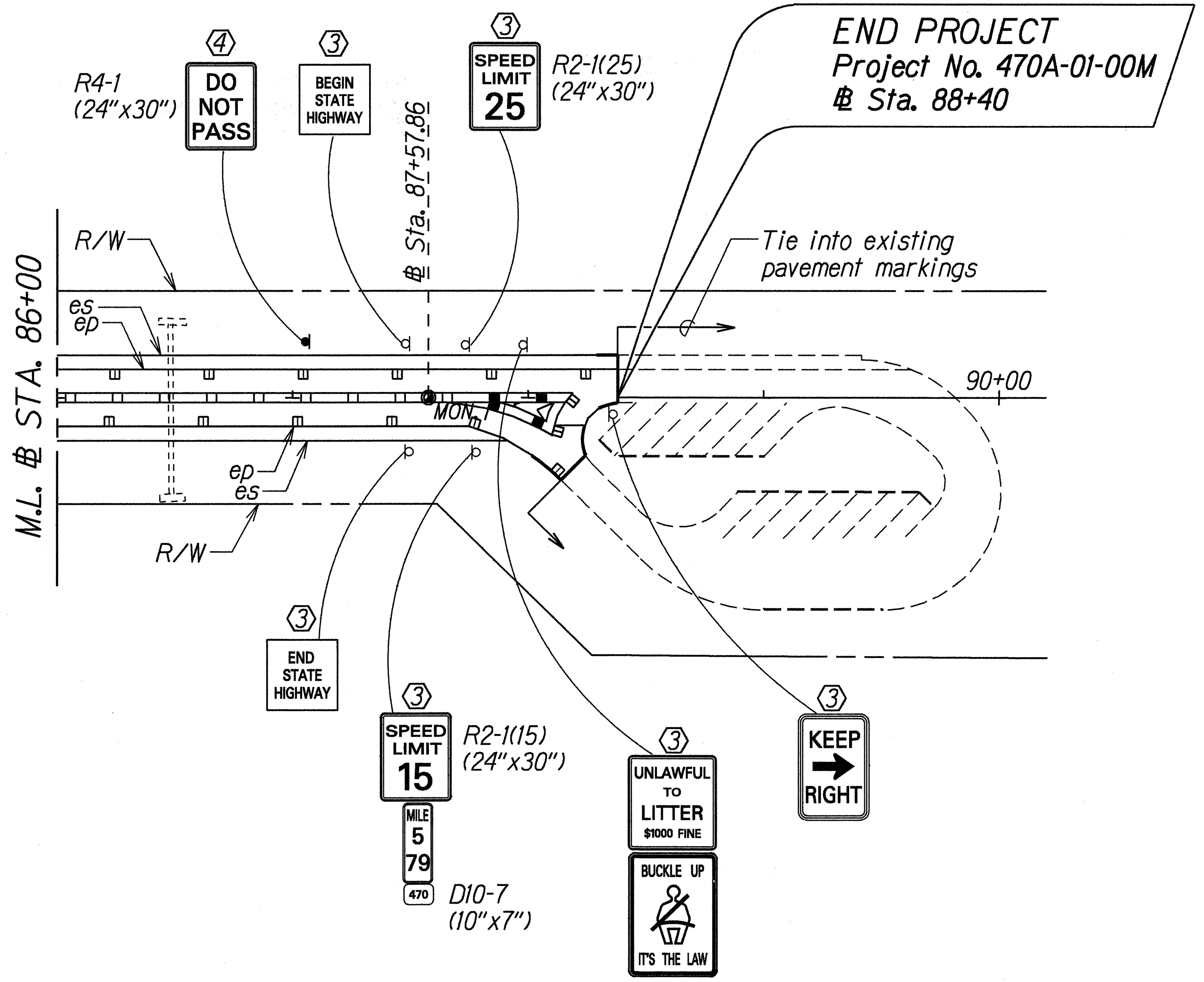
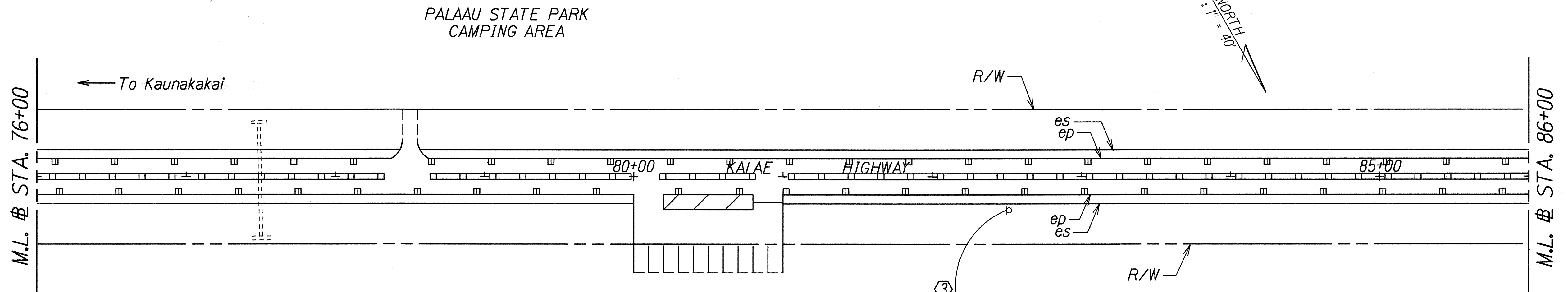
**SIGNING & PAVEMENT
MARKING PLAN**

**KALAE HIGHWAY RESURFACING
Maunaloa Highway to
Kalaupapa Lookout Parking Lot
Project No. 470A-01-00M**

Scale: 1" = 40' Date: February, 2000

SHEET No. 14 OF 15 SHEETS

| FED. ROAD DIST. NO. | STATE | PROJ. NO. | FISCAL YEAR | SHEET NO. | TOTAL SHEETS |
|---------------------|-------|-------------|-------------|-----------|--------------|
| HAWAII | HAW. | 470A-01-00M | 2000 | 36 | 39 |



| | |
|---------------|-----------|
| ORIGINAL PLAN | DATE |
| DESIGNED BY | Jan. 2000 |
| TRACED BY | |
| NOTED BY | |
| QUANTITIES BY | |
| CHECKED BY | |

- KEY:**
- ① Exist. Sign(s) & Post(s) to Remain
 - ② Remove Exist. Sign(s) & Post(s)
 - ③ Remove Exist. & Install New Sign(s) & Post(s)
 - ④ Install New Sign(s) & Post(s)

STATE OF HAWAII
DEPARTMENT OF TRANSPORTATION
HIGHWAYS DIVISION

SIGNING & PAVEMENT MARKING PLAN

KALAE HIGHWAY RESURFACING
Maunaloa Highway to
Kalaupapa Lookout Parking Lot
Project No. 470A-01-00M

Scale: 1" = 40' Date: February, 2000