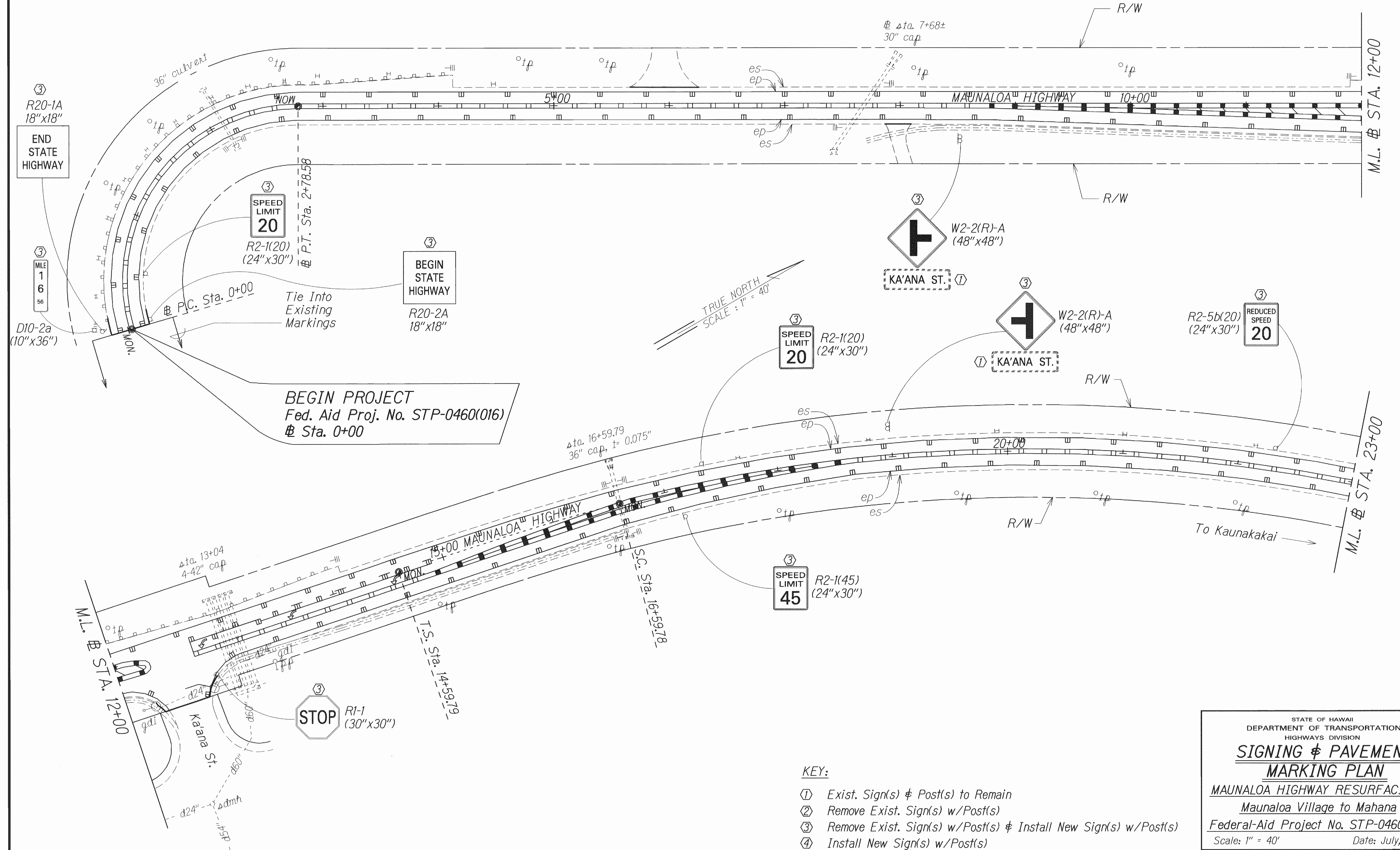


FED. ROAD DIST. NO.	STATE	FED. AID PROJ. NO.	FISCAL YEAR	SHEET NO.	TOTAL SHEETS
HAWAII	HAW.	STP-0460(016)	2013	27	40

TRUE NORTH
SCALE: 1" = 40'



DESIGNED BY	DATE
DRAWN BY	
CHECKED BY	
APPROVED BY	

- KEY:**
- ① Exist. Sign(s) & Post(s) to Remain
 - ② Remove Exist. Sign(s) w/Post(s)
 - ③ Remove Exist. Sign(s) w/Post(s) & Install New Sign(s) w/Post(s)
 - ④ Install New Sign(s) w/Post(s)

STATE OF HAWAII
DEPARTMENT OF TRANSPORTATION
HIGHWAYS DIVISION

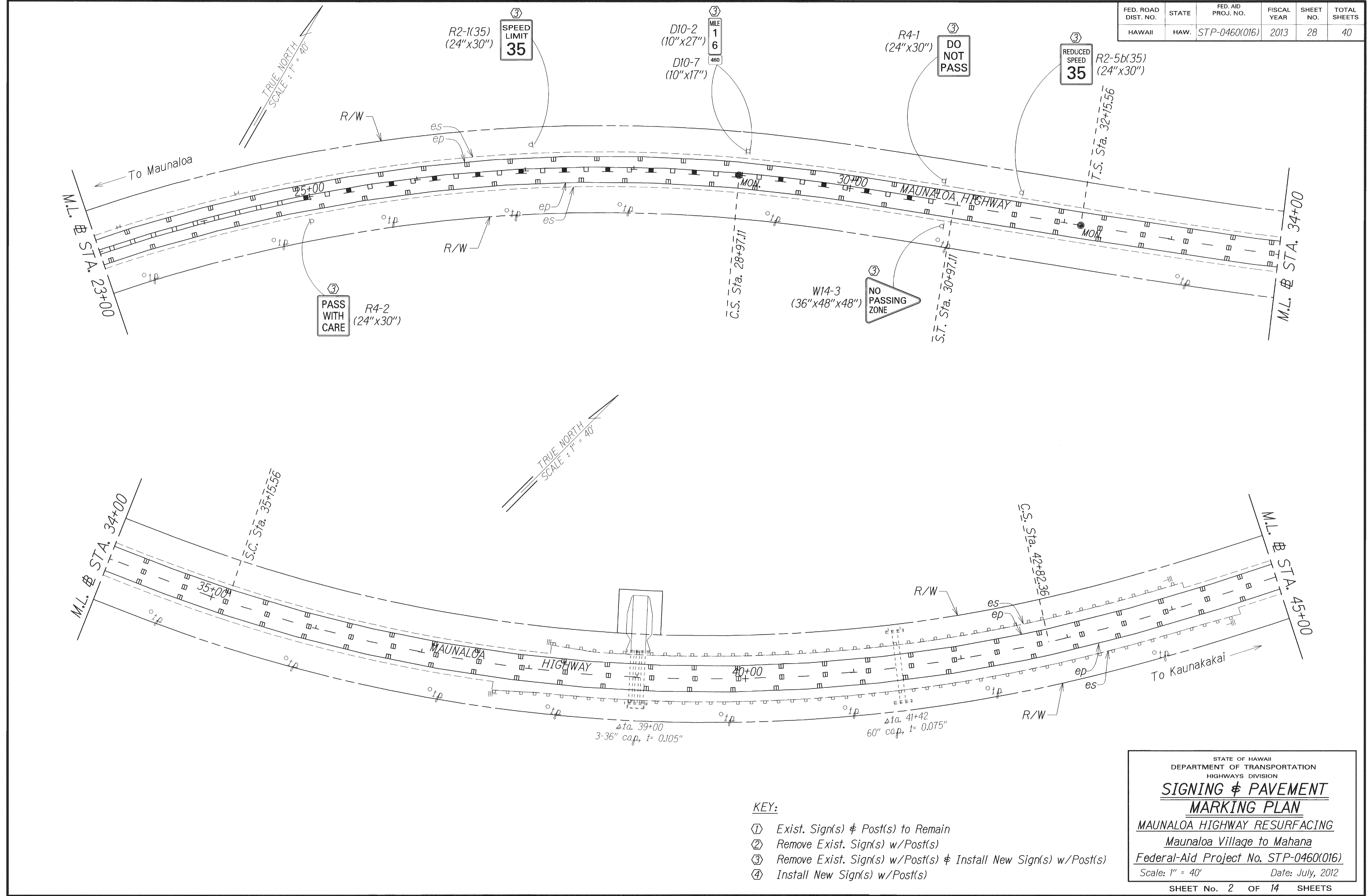
**SIGNING & PAVEMENT
MARKING PLAN**

MAUNALOA HIGHWAY RESURFACING
Maunaloa Village to Mahana
Federal-Aid Project No. STP-0460(016)

Scale: 1" = 40' Date: July, 2012

SHEET No. 1 OF 14 SHEETS

FED. ROAD DIST. NO.	STATE	FED. AID PROJ. NO.	FISCAL YEAR	SHEET NO.	TOTAL SHEETS
HAWAII	HAW.	STP-0460(016)	2013	28	40

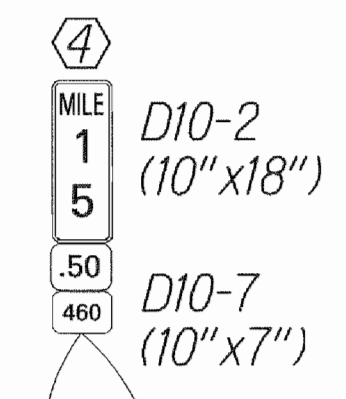
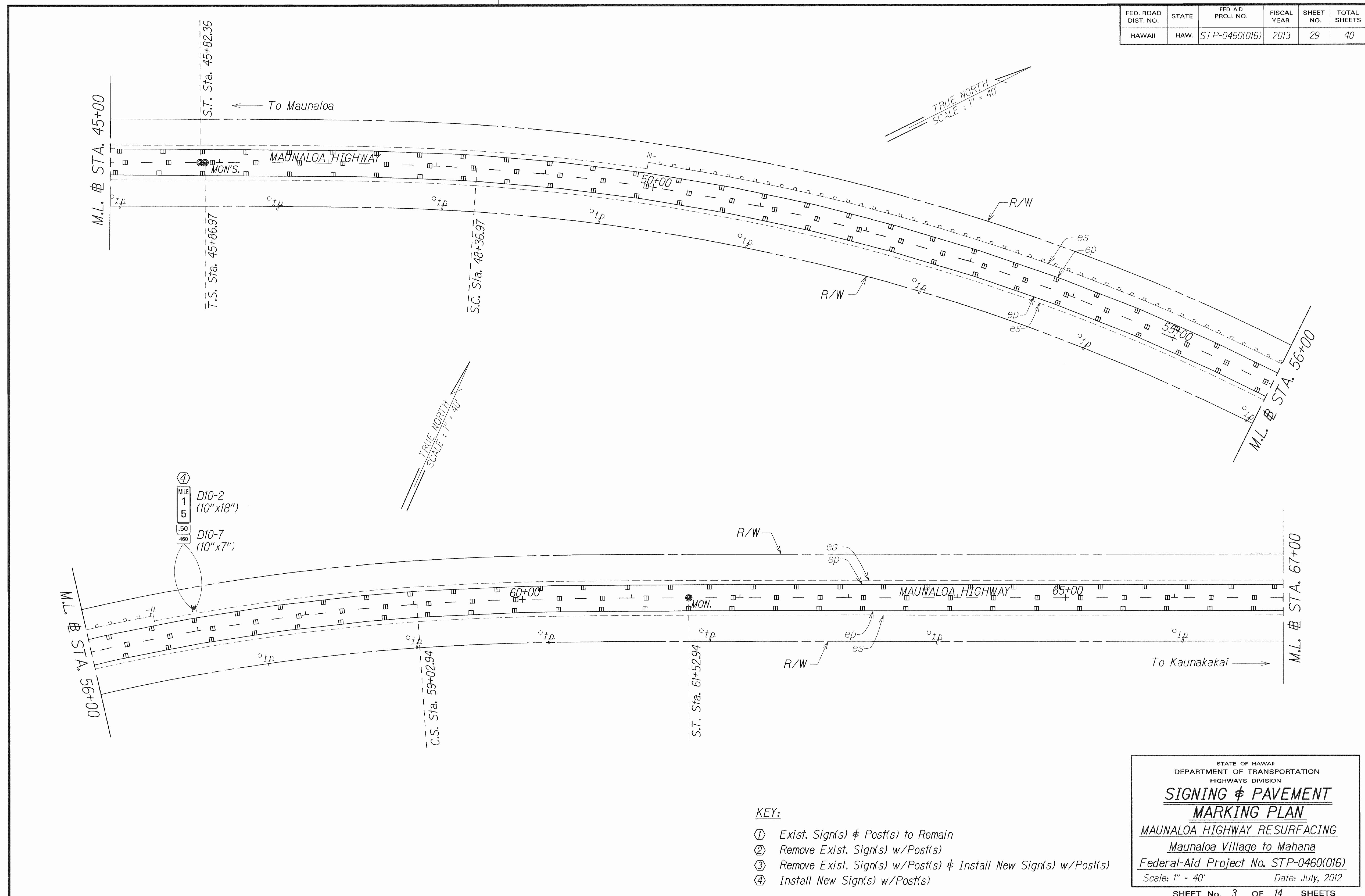


SURVEY PLOTTED BY: JLR
 DATE: 7/12/12
 ORIGINAL PLAN: JLR
 DRAWN BY: JLR
 TRACED BY: JLR
 NOTE BOOK: 10/19/12
 DESIGNED BY: JLR
 CHECKED BY: JLR

- KEY:**
- ① Exist. Sign(s) & Post(s) to Remain
 - ② Remove Exist. Sign(s) w/Post(s)
 - ③ Remove Exist. Sign(s) w/Post(s) & Install New Sign(s) w/Post(s)
 - ④ Install New Sign(s) w/Post(s)

STATE OF HAWAII
 DEPARTMENT OF TRANSPORTATION
 HIGHWAYS DIVISION
SIGNING & PAVEMENT MARKING PLAN
 MAUNALOA HIGHWAY RESURFACING
 Maunaloa Village to Mahana
 Federal-Aid Project No. STP-0460(016)
 Scale: 1" = 40' Date: July, 2012
 SHEET No. 2 OF 14 SHEETS

FED. ROAD DIST. NO.	STATE	FED. AID PROJ. NO.	FISCAL YEAR	SHEET NO.	TOTAL SHEETS
HAWAII	HAW.	STP-0460(016)	2013	29	40



DESIGNED BY	DATE
TRACED BY	7/12
QUANTITIES BY	
CHECKED BY	

- KEY:**
- ① Exist. Sign(s) & Post(s) to Remain
 - ② Remove Exist. Sign(s) w/Post(s)
 - ③ Remove Exist. Sign(s) w/Post(s) & Install New Sign(s) w/Post(s)
 - ④ Install New Sign(s) w/Post(s)

STATE OF HAWAII
DEPARTMENT OF TRANSPORTATION
HIGHWAYS DIVISION

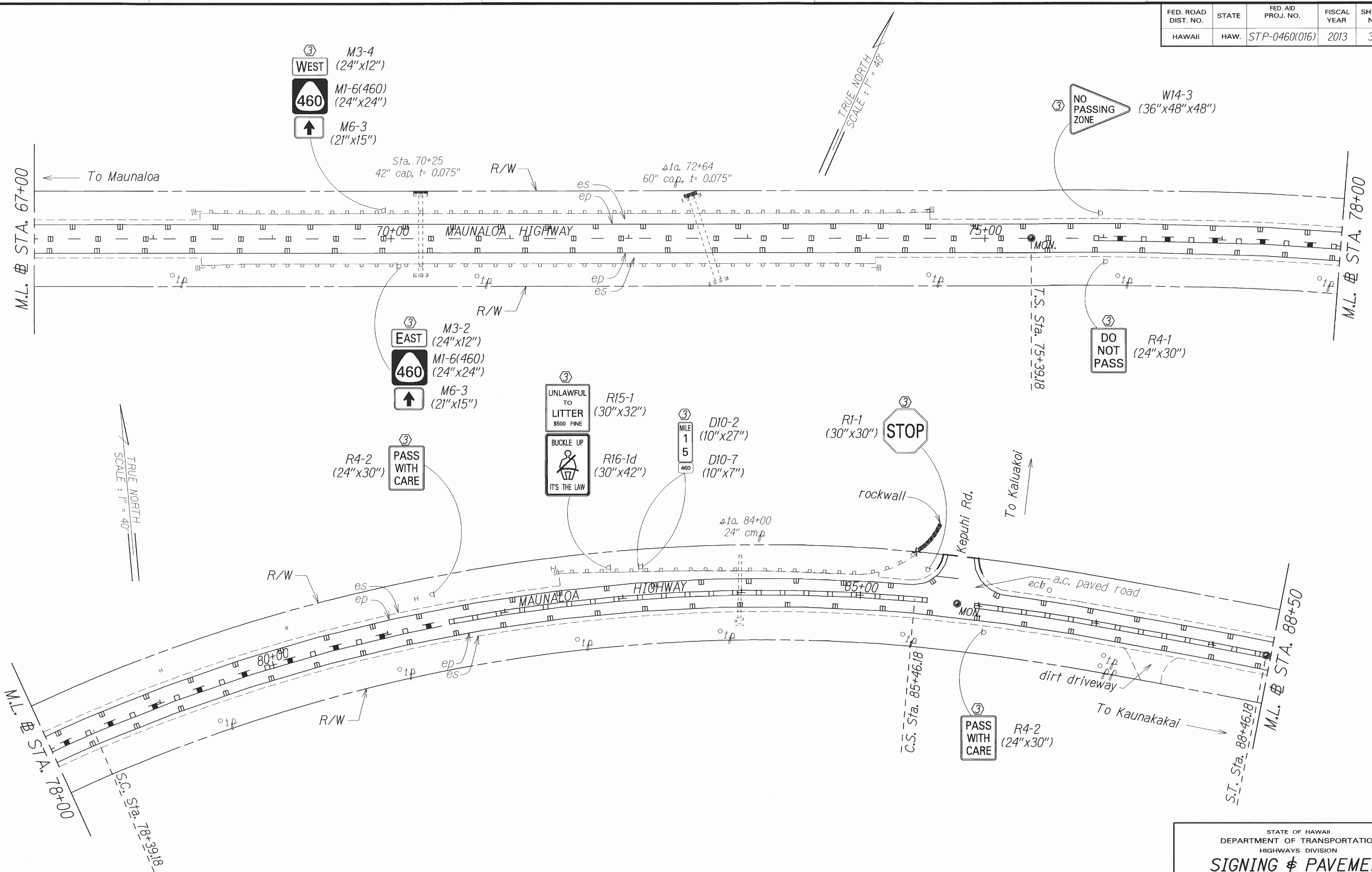
**SIGNING & PAVEMENT
MARKING PLAN**

MAUNALOA HIGHWAY RESURFACING
Maunaloa Village to Mahana
Federal-Aid Project No. STP-0460(016)

Scale: 1" = 40' Date: July, 2012

SHEET No. 3 OF 14 SHEETS

FED. ROAD DIST. NO.	STATE	FED. AID PROJ. NO.	FISCAL YEAR	SHEET NO.	TOTAL SHEETS
HAWAII	HAW.	STP-0460(016)	2013	30	40



DATE	1/12
SURVEY PLOTTED BY	...
DRAWN BY	...
DESIGNED BY	...
CHECKED BY	...
ORIGINAL PLAN	...
NOTE BOOK	...
DESIGNED BY	...
CHECKED BY	...

- KEY:**
- ① Exist. Sign(s) & Post(s) to Remain
 - ② Remove Exist. Sign(s) w/Post(s)
 - ③ Remove Exist. Sign(s) w/Post(s) & Install New Sign(s) w/Post(s)
 - ④ Install New Sign(s) w/Post(s)

STATE OF HAWAII
DEPARTMENT OF TRANSPORTATION
HIGHWAYS DIVISION

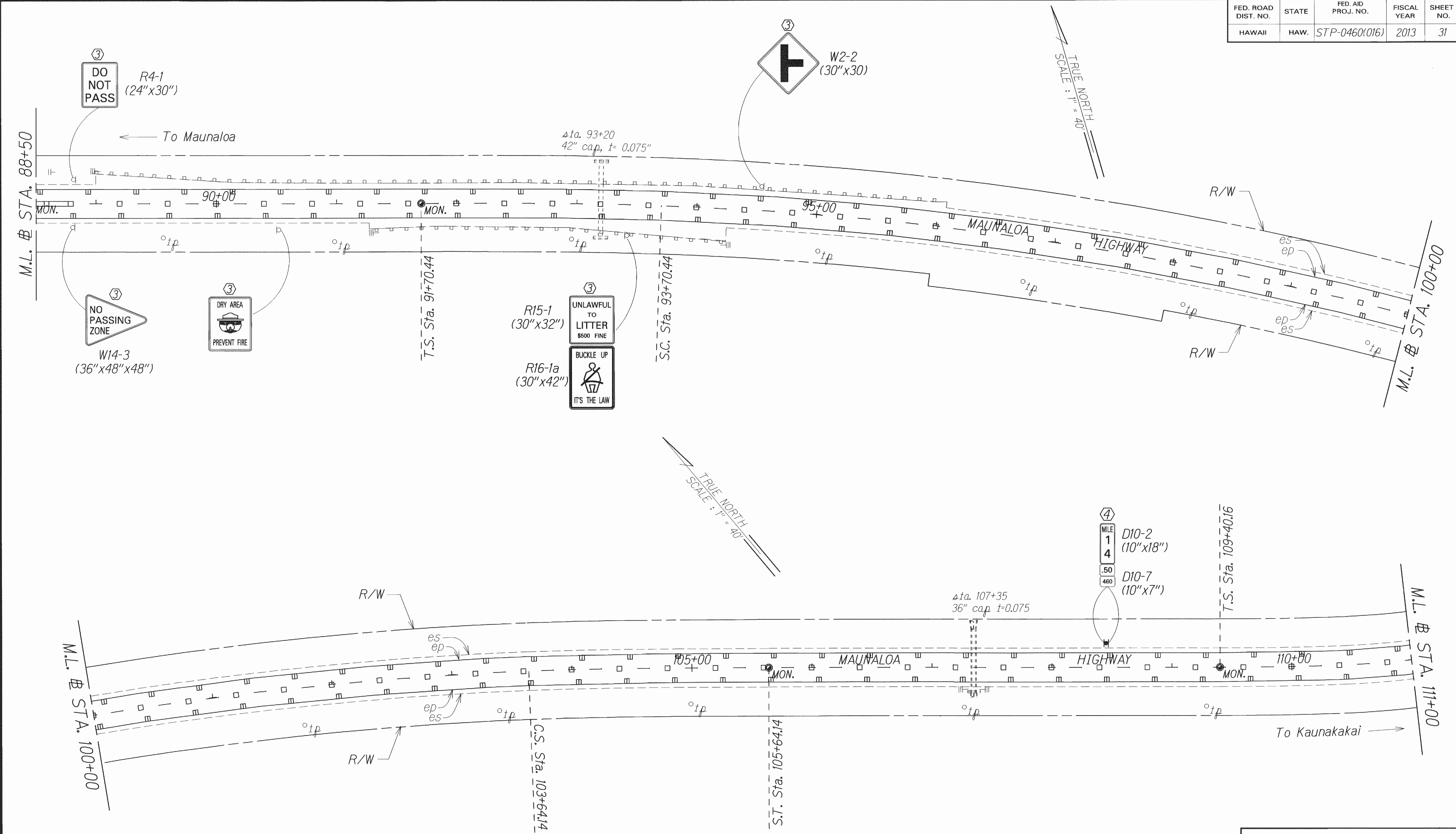
**SIGNING & PAVEMENT
MARKING PLAN**

MAUNALOA HIGHWAY RESURFACING
Maunaloa Village to Mahana
Federal-Aid Project No. STP-0460(016)

Scale: 1" = 40' Date: July, 2012

SHEET No. 4 OF 14 SHEETS

FED. ROAD DIST. NO.	STATE	FED. AID PROJ. NO.	FISCAL YEAR	SHEET NO.	TOTAL SHEETS
HAWAII	HAW.	STP-0460(016)	2013	31	40



DESIGNED BY	DATE
DRAWN BY	
TRACED BY	
DESIGNED BY	
QUANTITIES BY	
CHECKED BY	

- KEY:**
- ① Exist. Sign(s) & Post(s) to Remain
 - ② Remove Exist. Sign(s) w/Post(s)
 - ③ Remove Exist. Sign(s) w/Post(s) & Install New Sign(s) w/Post(s)
 - ④ Install New Sign(s) w/Post(s)

STATE OF HAWAII
DEPARTMENT OF TRANSPORTATION
HIGHWAYS DIVISION

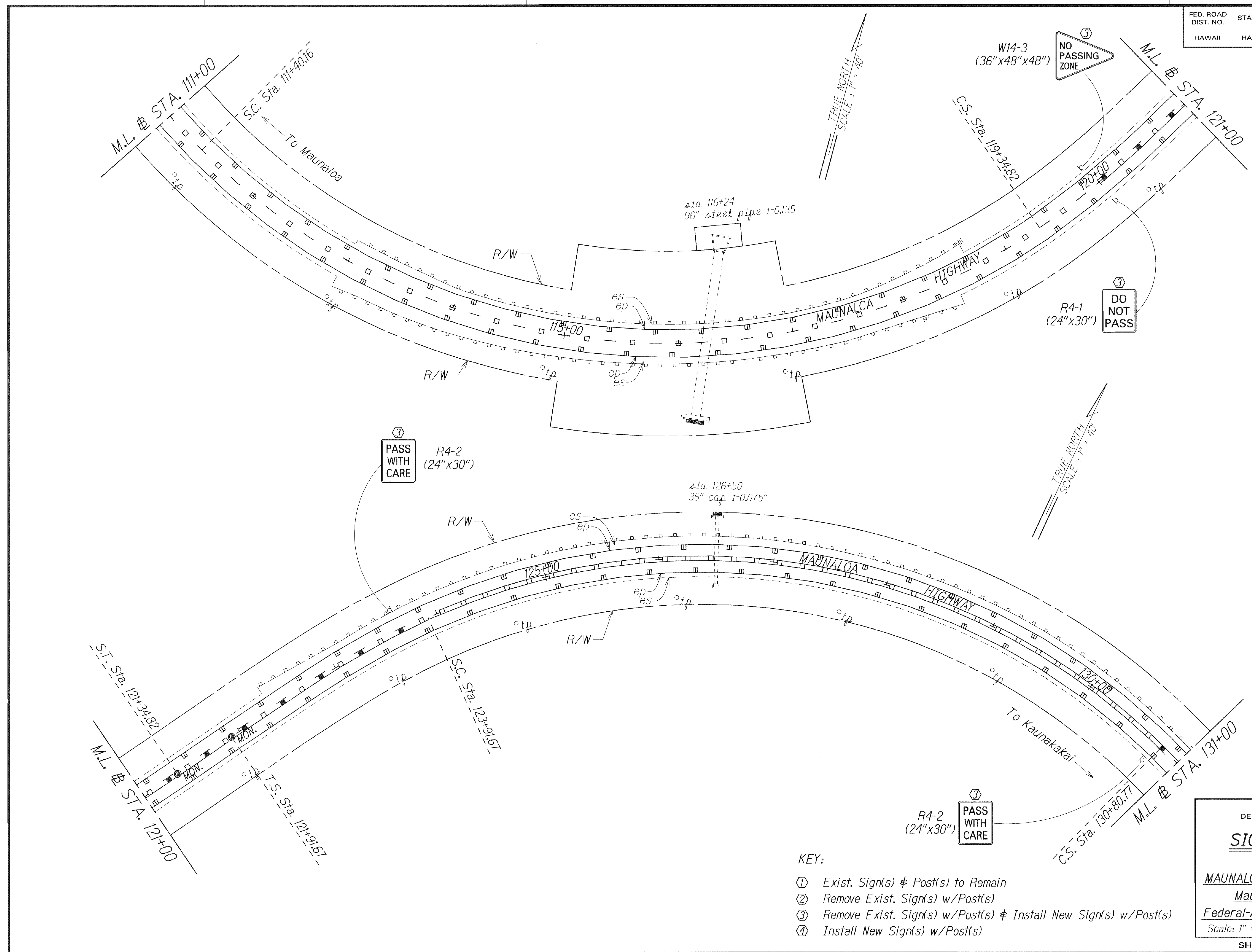
**SIGNING & PAVEMENT
MARKING PLAN**

MAUNALOA HIGHWAY RESURFACING
Maunaloa Village to Mahana
Federal-Aid Project No. STP-0460(016)

Scale: 1" = 40' Date: July, 2012

SHEET No. 5 OF 14 SHEETS

FED. ROAD DIST. NO.	STATE	FED. AID PROJ. NO.	FISCAL YEAR	SHEET NO.	TOTAL SHEETS
HAWAII	HAW.	STP-0460(016)	2013	32	40

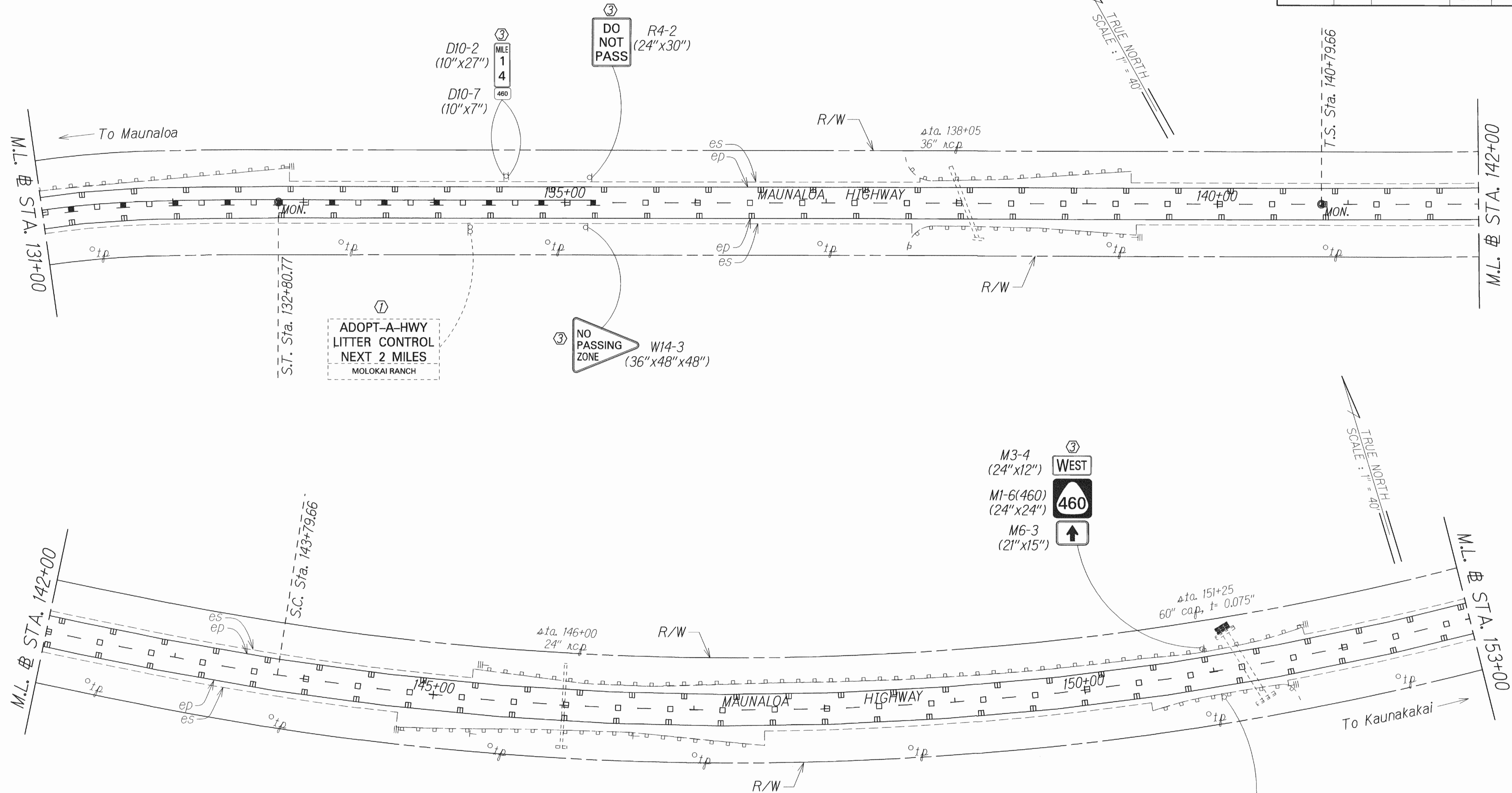


SURVEY PROVIDED BY: _____ DATE: 7/12
 DRAWN BY: _____
 NOTE BOOK: _____
 DESIGNED BY: _____
 QUANTITIES BY: _____
 CHECKED BY: _____

- KEY:**
- ① Exist. Sign(s) & Post(s) to Remain
 - ② Remove Exist. Sign(s) w/Post(s)
 - ③ Remove Exist. Sign(s) w/Post(s) & Install New Sign(s) w/Post(s)
 - ④ Install New Sign(s) w/Post(s)

STATE OF HAWAII
 DEPARTMENT OF TRANSPORTATION
 HIGHWAYS DIVISION
SIGNING & PAVEMENT MARKING PLAN
 MAUNALO A HIGHWAY RESURFACING
 Maunaloa Village to Mahana
 Federal-Aid Project No. STP-0460(016)
 Scale: 1" = 40' Date: July, 2012

FED. ROAD DIST. NO.	STATE	FED. AID PROJ. NO.	FISCAL YEAR	SHEET NO.	TOTAL SHEETS
HAWAII	HAW.	STP-0460(016)	2013	33	40



ORIGINAL PLAN	SURVEY PLOTTED BY	DATE
NOTE BOOK	DESIGNED BY	
QUANTITIES BY	CHECKED BY	

- KEY:**
- ① Exist. Sign(s) & Post(s) to Remain
 - ② Remove Exist. Sign(s) w/Post(s)
 - ③ Remove Exist. Sign(s) w/Post(s) & Install New Sign(s) w/Post(s)
 - ④ Install New Sign(s) w/Post(s)

STATE OF HAWAII
DEPARTMENT OF TRANSPORTATION
HIGHWAYS DIVISION

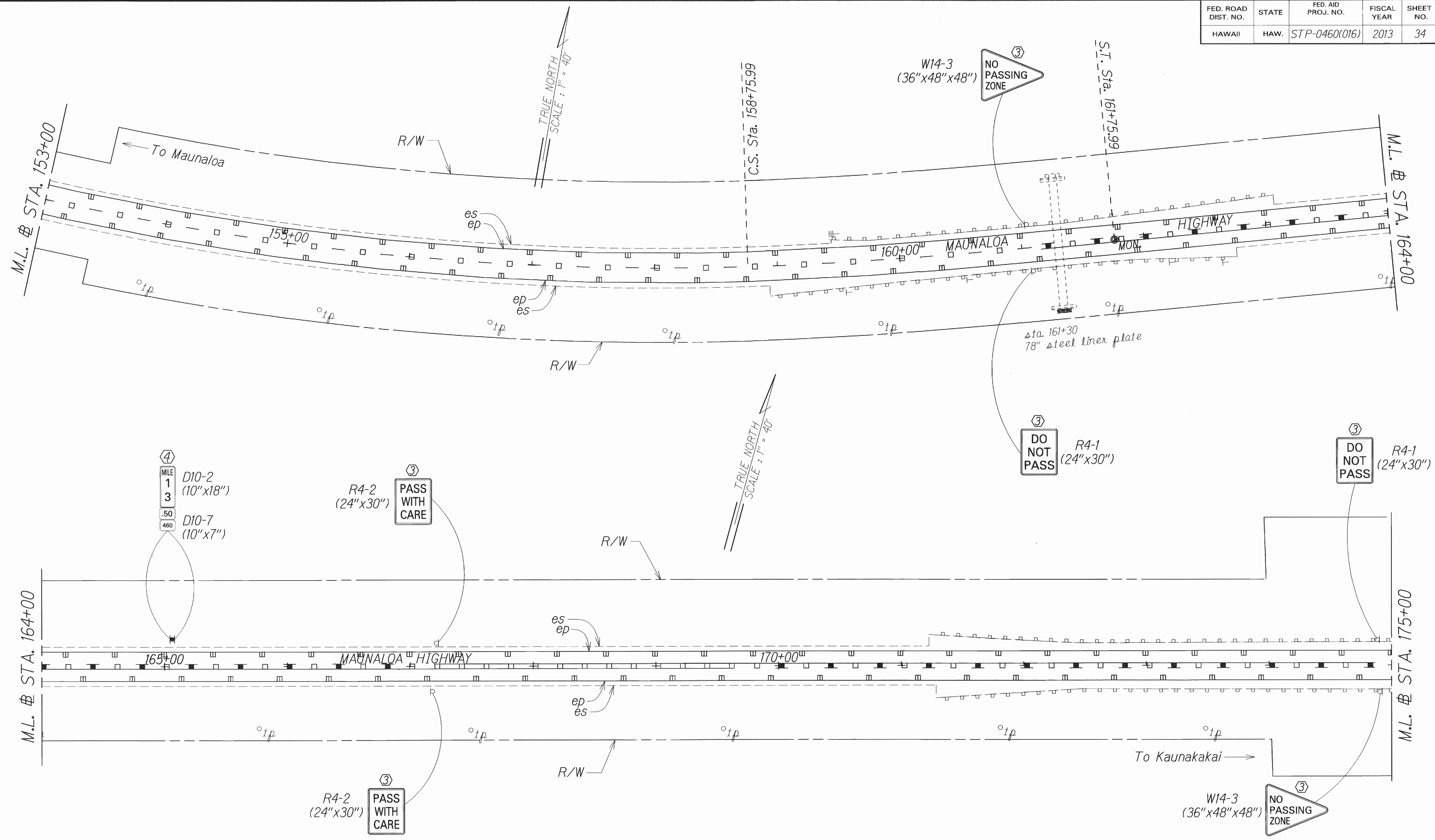
**SIGNING & PAVEMENT
MARKING PLAN**

*MAUNALOA HIGHWAY RESURFACING
Maunaloa Village to Mahana*

Federal-Aid Project No. STP-0460(016)
Scale: 1" = 40' Date: July, 2012

SHEET No. 7 OF 14 SHEETS

FED. ROAD DIST. NO.	STATE	FED. AID PROJ. NO.	FISCAL YEAR	SHEET NO.	TOTAL SHEETS
HAWAII	HAW.	STP-0460(016)	2013	34	40

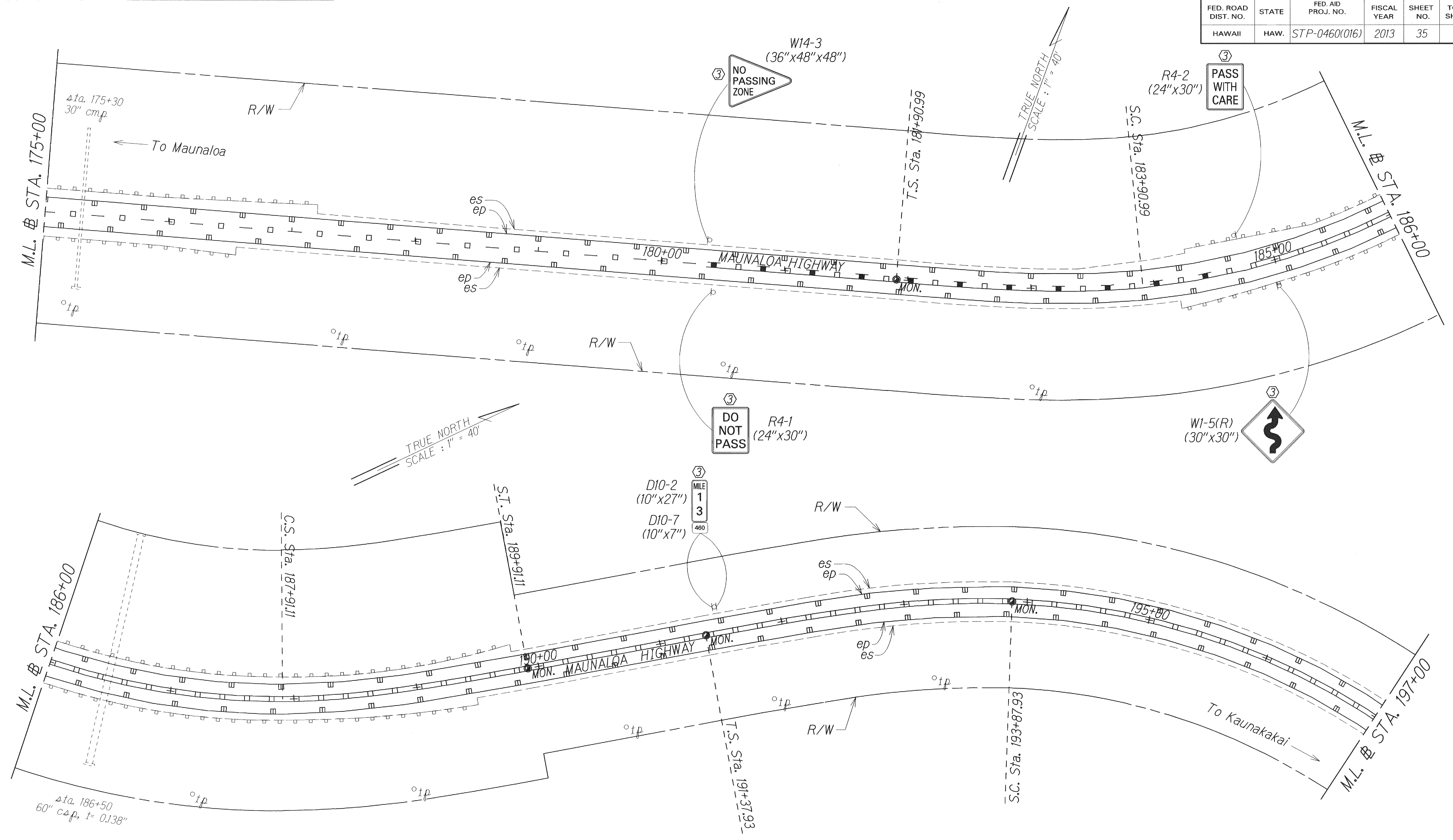


SURVEY PLOTTED BY: _____ DATE: 7/12
 DRAWN BY: JLR
 TRACED BY: _____
 DESIGNED BY: _____
 CHECKED BY: _____
 ORIGINAL PLAN: _____
 NOTED BY: _____
 DATE: _____

- KEY:**
- ① Exist. Sign(s) & Post(s) to Remain
 - ② Remove Exist. Sign(s) w/Post(s)
 - ③ Remove Exist. Sign(s) w/Post(s) & Install New Sign(s) w/Post(s)
 - ④ Install New Sign(s) w/Post(s)

STATE OF HAWAII
 DEPARTMENT OF TRANSPORTATION
 HIGHWAYS DIVISION
SIGNING & PAVEMENT MARKING PLAN
 MAUNALO A HIGHWAY RESURFACING
 Maunaloa Village to Mahana
 Federal-Aid Project No. STP-0460(016)
 Scale: 1" = 40' Date: July, 2012
 SHEET No. 8 OF 14 SHEETS

FED. ROAD DIST. NO.	STATE	FED. AID PROJ. NO.	FISCAL YEAR	SHEET NO.	TOTAL SHEETS
HAWAII	HAW.	STP-0460(016)	2013	35	40



DATE: 7/12
 SURVEY PLOTTED BY: [Signature]
 DRAWN BY: [Signature]
 DESIGNED BY: [Signature]
 CHECKED BY: [Signature]

- KEY:**
- ① Exist. Sign(s) & Post(s) to Remain
 - ② Remove Exist. Sign(s) w/Post(s)
 - ③ Remove Exist. Sign(s) w/Post(s) & Install New Sign(s) w/Post(s)
 - ④ Install New Sign(s) w/Post(s)

STATE OF HAWAII
 DEPARTMENT OF TRANSPORTATION
 HIGHWAYS DIVISION

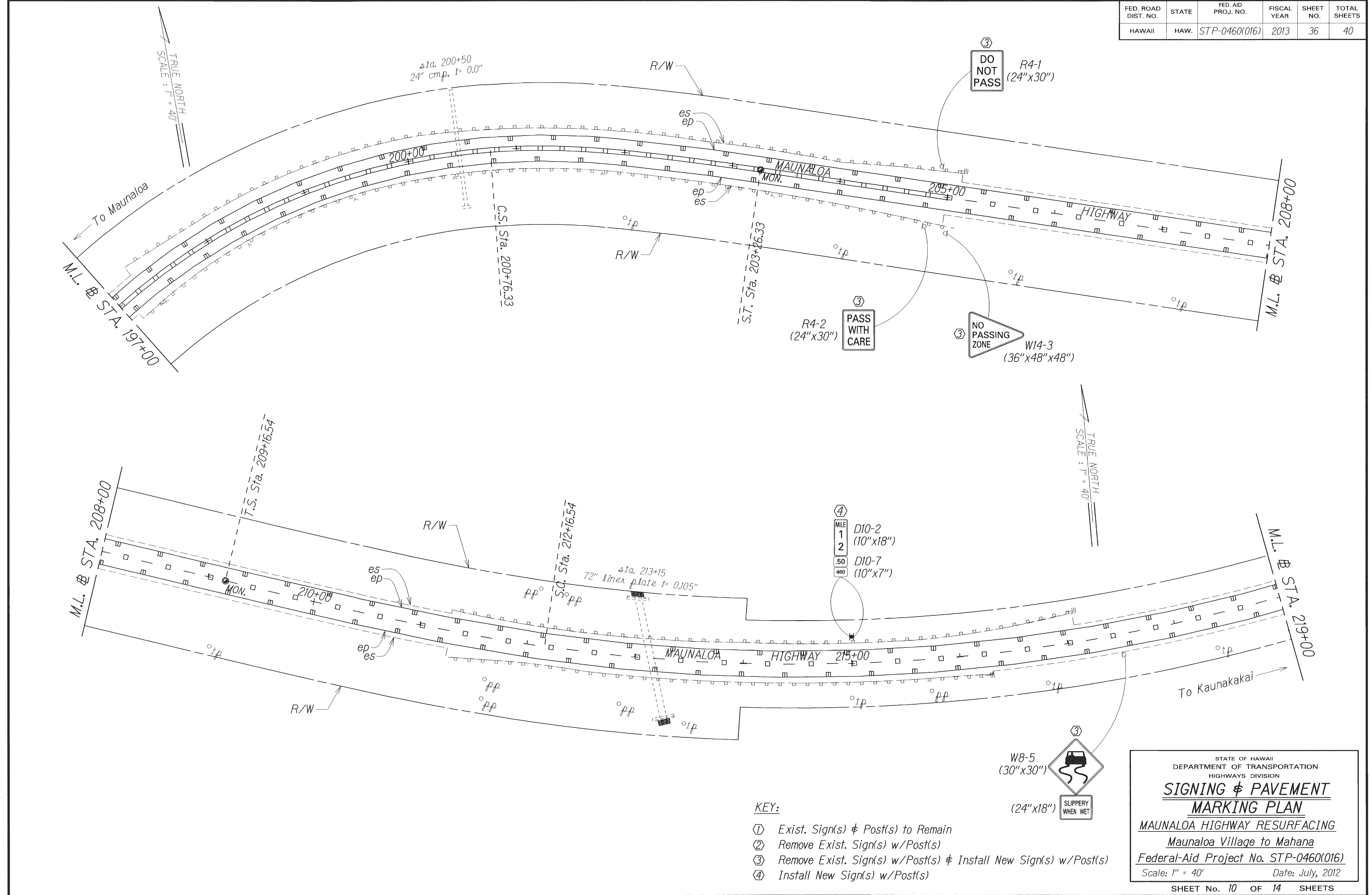
**SIGNING & PAVEMENT
 MARKING PLAN**

MAUNALOA HIGHWAY RESURFACING
 Maunaloa Village to Mahana
 Federal-Aid Project No. STP-0460(016)

Scale: 1" = 40' Date: July, 2012

SHEET No. 9 OF 14 SHEETS

FED. ROAD DIST. NO.	STATE	FED. AID PROJ. NO.	FISCAL YEAR	SHEET NO.	TOTAL SHEETS
HAWAII	HAW.	STP-0460(016)	2013	36	40

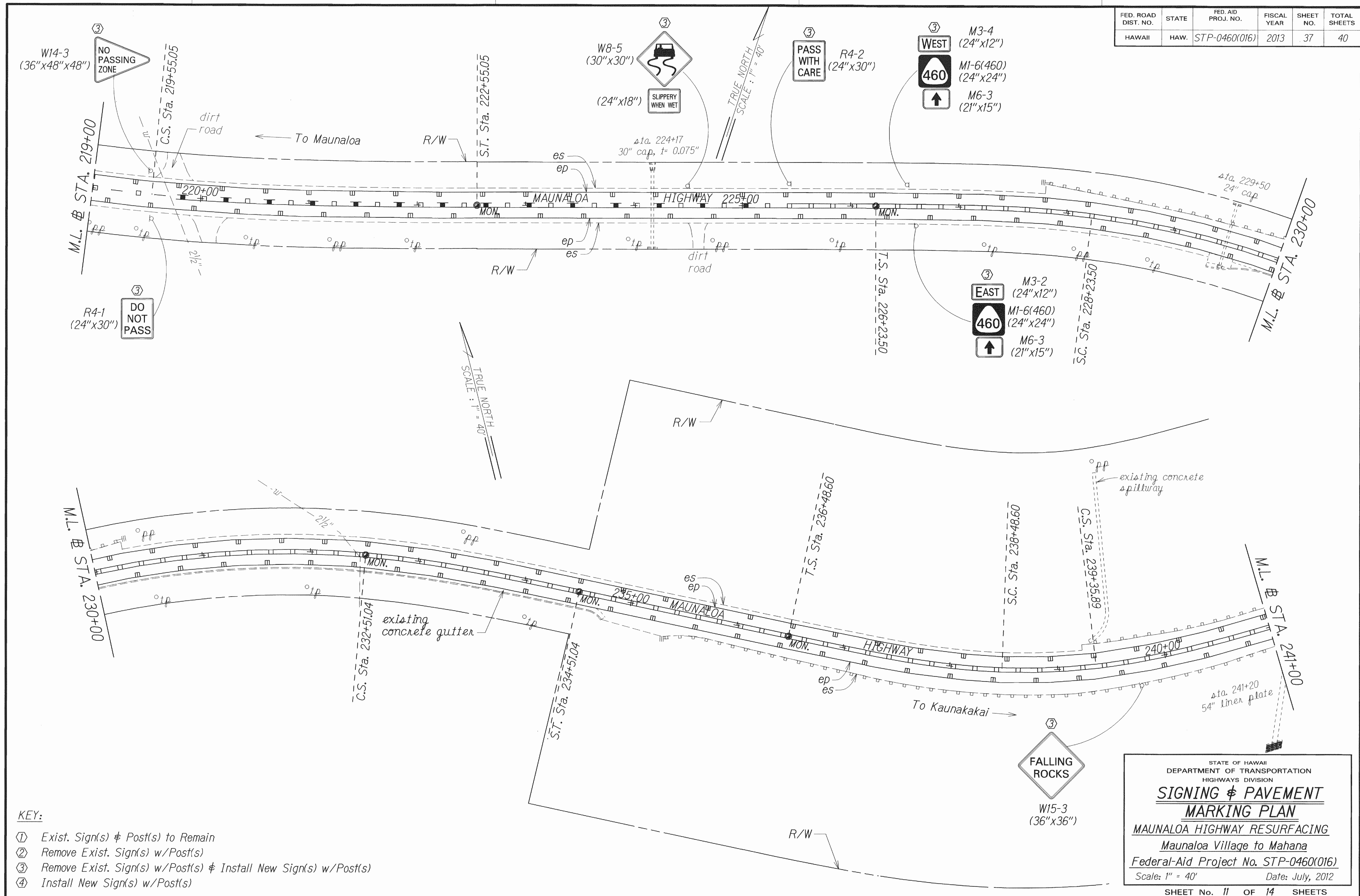


SURVEY OBTAINED BY: _____ DATE: 1/12
 PLAN DRAWN BY: _____
 NOTE BOOK DESIGNED BY: _____
 QUANTITIES BY: _____
 CHECKED BY: _____

- KEY:**
- ① Exist. Sign(s) & Post(s) to Remain
 - ② Remove Exist. Sign(s) w/Post(s)
 - ③ Remove Exist. Sign(s) w/Post(s) & Install New Sign(s) w/Post(s)
 - ④ Install New Sign(s) w/Post(s)

STATE OF HAWAII
 DEPARTMENT OF TRANSPORTATION
 HIGHWAYS DIVISION
SIGNING & PAVEMENT MARKING PLAN
 MAUNALOA HIGHWAY RESURFACING
 Maunaloa Village to Mahana
 Federal-Aid Project No. STP-0460(016)
 Scale: 1" = 40' Date: July, 2012

FED. ROAD DIST. NO.	STATE	FED. AID PROJ. NO.	FISCAL YEAR	SHEET NO.	TOTAL SHEETS
HAWAII	HAW.	STP-0460(016)	2013	37	40



SURVEY PLOTTED BY	DATE
DRAWN BY	
TRACED BY	
NOTE BOOK	
QUANTITIES BY	
CHECKED BY	

- KEY:**
- ① Exist. Sign(s) & Post(s) to Remain
 - ② Remove Exist. Sign(s) w/Post(s)
 - ③ Remove Exist. Sign(s) w/Post(s) & Install New Sign(s) w/Post(s)
 - ④ Install New Sign(s) w/Post(s)

STATE OF HAWAII
DEPARTMENT OF TRANSPORTATION
HIGHWAYS DIVISION

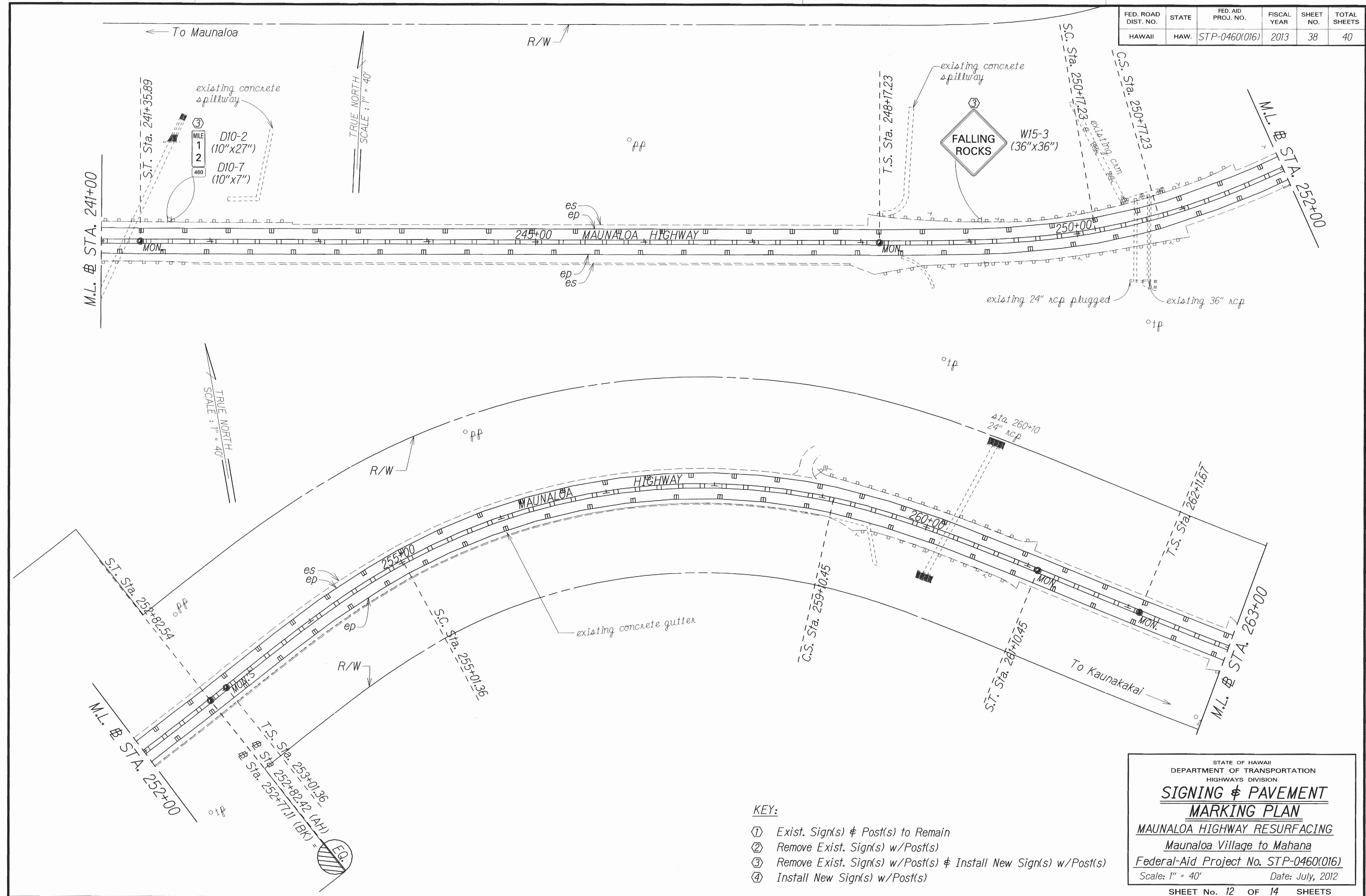
**SIGNING & PAVEMENT
MARKING PLAN**

MAUNALOA HIGHWAY RESURFACING
Maunaloa Village to Mahana
Federal-Aid Project No. STP-0460(016)

Scale: 1" = 40' Date: July, 2012

SHEET No. 11 OF 14 SHEETS

FED. ROAD DIST. NO.	STATE	FED. AID PROJ. NO.	FISCAL YEAR	SHEET NO.	TOTAL SHEETS
HAWAII	HAW.	STP-0460(016)	2013	38	40



DESIGNED BY	DATE
DRAWN BY	7/12
TRACED BY	
NOTE BOOK	
DESIGNED BY	
QUANTITIES BY	
CHECKED BY	

- KEY:**
- ① Exist. Sign(s) & Post(s) to Remain
 - ② Remove Exist. Sign(s) w/Post(s)
 - ③ Remove Exist. Sign(s) w/Post(s) & Install New Sign(s) w/Post(s)
 - ④ Install New Sign(s) w/Post(s)

STATE OF HAWAII
DEPARTMENT OF TRANSPORTATION
HIGHWAYS DIVISION

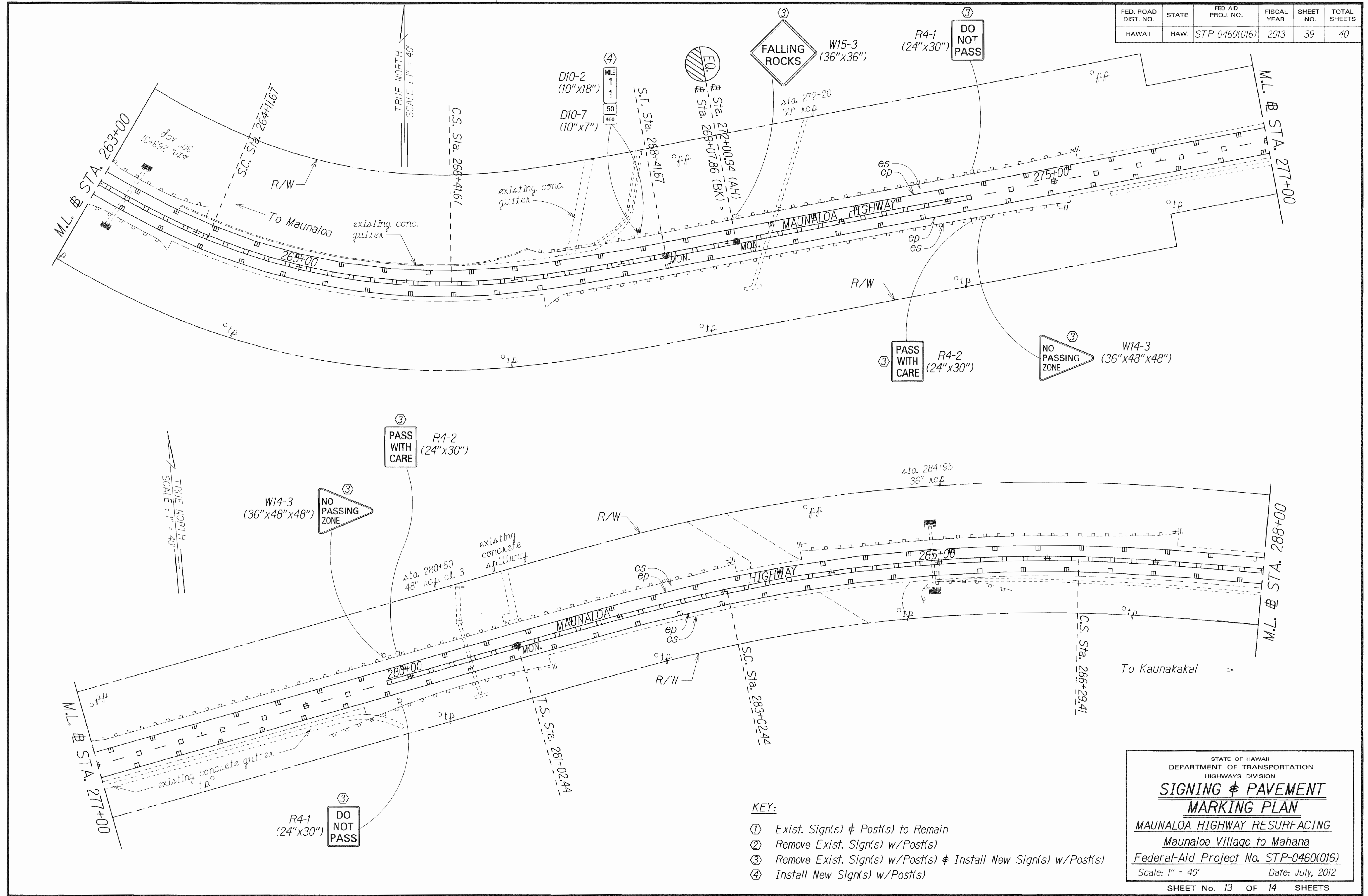
**SIGNING & PAVEMENT
MARKING PLAN**

MAUNALOA HIGHWAY RESURFACING
Maunaloa Village to Mahana

Federal-Aid Project No. STP-0460(016)
Scale: 1" = 40' Date: July, 2012

SHEET No. 12 OF 14 SHEETS

FED. ROAD DIST. NO.	STATE	FED. AID PROJ. NO.	FISCAL YEAR	SHEET NO.	TOTAL SHEETS
HAWAII	HAW.	STP-0460(016)	2013	39	40



TRUE NORTH
SCALE: 1" = 40'

TRUE NORTH
SCALE: 1" = 40'

DATE: 7/12
 SURVEY PLANNED BY: [Signature]
 DRAWN BY: [Signature]
 TRACED BY: [Signature]
 DESIGNED BY: [Signature]
 CHECKED BY: [Signature]

- KEY:**
- ① Exist. Sign(s) & Post(s) to Remain
 - ② Remove Exist. Sign(s) w/Post(s)
 - ③ Remove Exist. Sign(s) w/Post(s) & Install New Sign(s) w/Post(s)
 - ④ Install New Sign(s) w/Post(s)

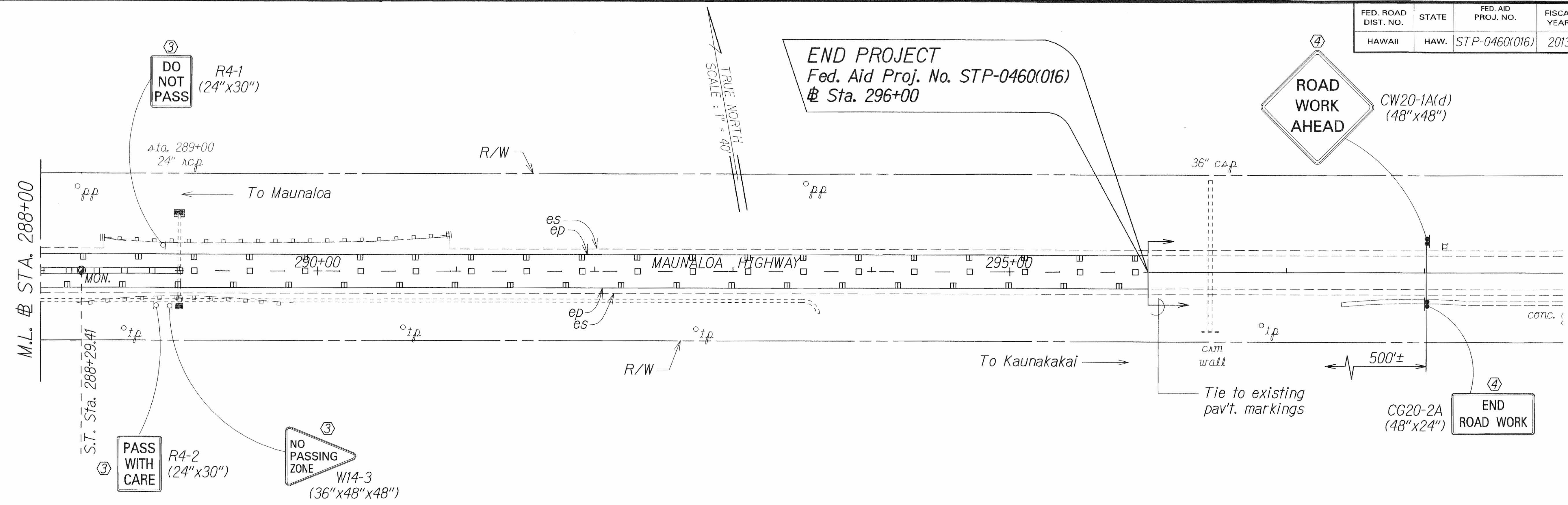
STATE OF HAWAII
 DEPARTMENT OF TRANSPORTATION
 HIGHWAYS DIVISION

**SIGNING & PAVEMENT
 MARKING PLAN**

MAUNALOA HIGHWAY RESURFACING
 Maunaloa Village to Mahana
 Federal-Aid Project No. STP-0460(016)
 Scale: 1" = 40' Date: July, 2012

SHEET No. 13 OF 14 SHEETS

FED. ROAD DIST. NO.	STATE	FED. AID PROJ. NO.	FISCAL YEAR	SHEET NO.	TOTAL SHEETS
HAWAII	HAW.	STP-0460(016)	2013	40	40



END PROJECT
 Fed. Aid Proj. No. STP-0460(016)
 @ Sta. 296+00

TRUE NORTH
 SCALE: 1" = 40'

M.L. @ STA. 288+00

S.T. Sta. 288+29.41

③
DO NOT PASS
 R4-1
 (24"x30")

③
PASS WITH CARE
 R4-2
 (24"x30")

③
NO PASSING ZONE
 W14-3
 (36"x48"x48")

④
ROAD WORK AHEAD
 CW20-1A(d)
 (48"x48")

④
END ROAD WORK
 CG20-2A
 (48"x24")

SURVEY PLOTTED BY: _____ DATE: _____
 DRAWN BY: _____
 TRACED BY: _____
 NOTE BOOK: _____
 QUANTITIES BY: _____
 CHECKED BY: _____

- KEY:**
- ① Exist. Sign(s) & Post(s) to Remain
 - ② Remove Exist. Sign(s) w/Post(s)
 - ③ Remove Exist. Sign(s) w/Post(s) & Install New Sign(s) w/Post(s)
 - ④ Install New Sign(s) w/Post(s)

STATE OF HAWAII
 DEPARTMENT OF TRANSPORTATION
 HIGHWAYS DIVISION

SIGNING & PAVEMENT MARKING PLAN

MAUNALOA HIGHWAY RESURFACING
 Maunaloa Village to Mahana

Federal-Aid Project No. STP-0460(016)
 Scale: 1" = 40' Date: July, 2012