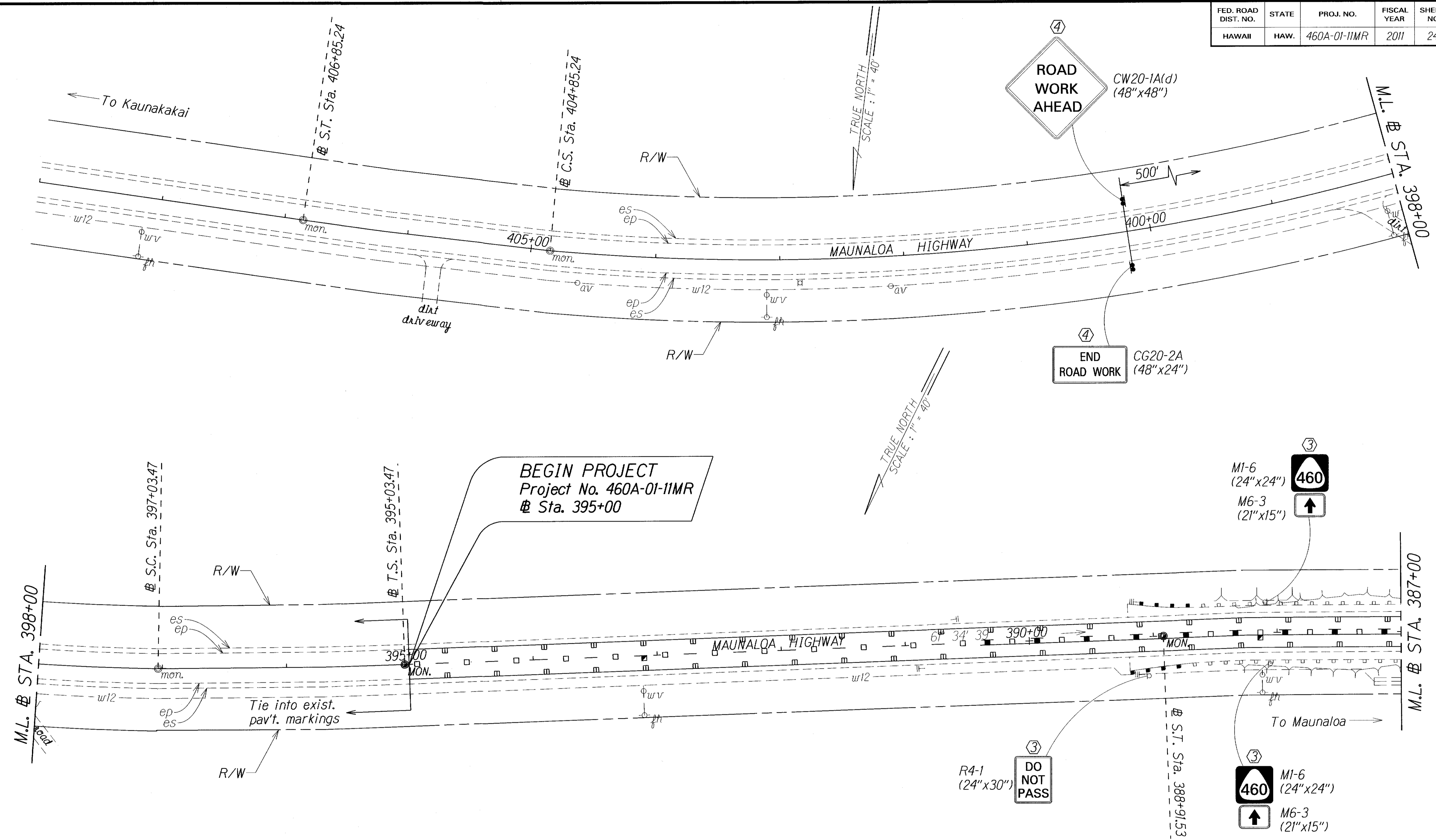


FED. ROAD DIST. NO.	STATE	PROJ. NO.	FISCAL YEAR	SHEET NO.	TOTAL SHEETS
HAWAII	HAW.	460A-01-11MR	2011	24	29



ORIGINAL PLAN	SURVEY PLOTTED BY	DATE
TRACED BY	DRAWN BY	
NOTED BY	CHECKED BY	
N. 10/10/10		

LEGEND FOR AS-BUILT POSTINGS	
	Squiggly line for as-built deletion
	Double line for as-built deletion
Roadway	Text for as-built posting

- KEY:
- ① Exist. Sign(s) & Post(s) to Remain
 - ② Remove Exist. Sign(s) & Post(s)
 - ③ Remove Exist. & Install New Sign(s) & Post(s)
 - ④ Install New Sign(s) & Post(s)

STATE OF HAWAII
DEPARTMENT OF TRANSPORTATION
HIGHWAYS DIVISION

SIGNING & PAVEMENT MARKING PLAN

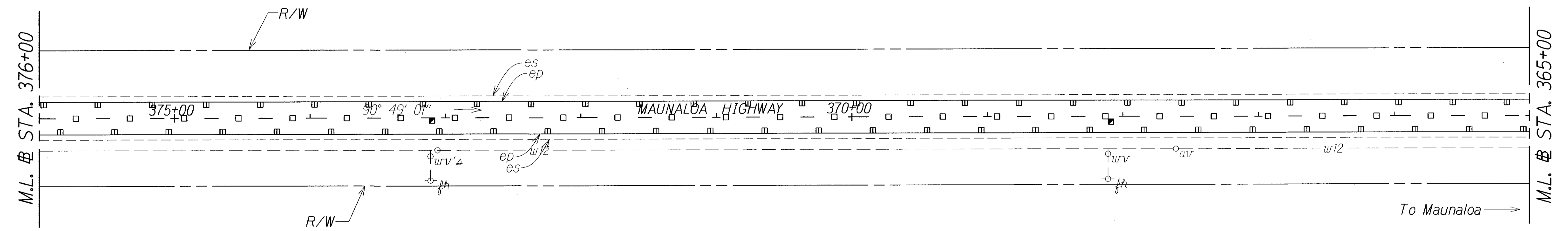
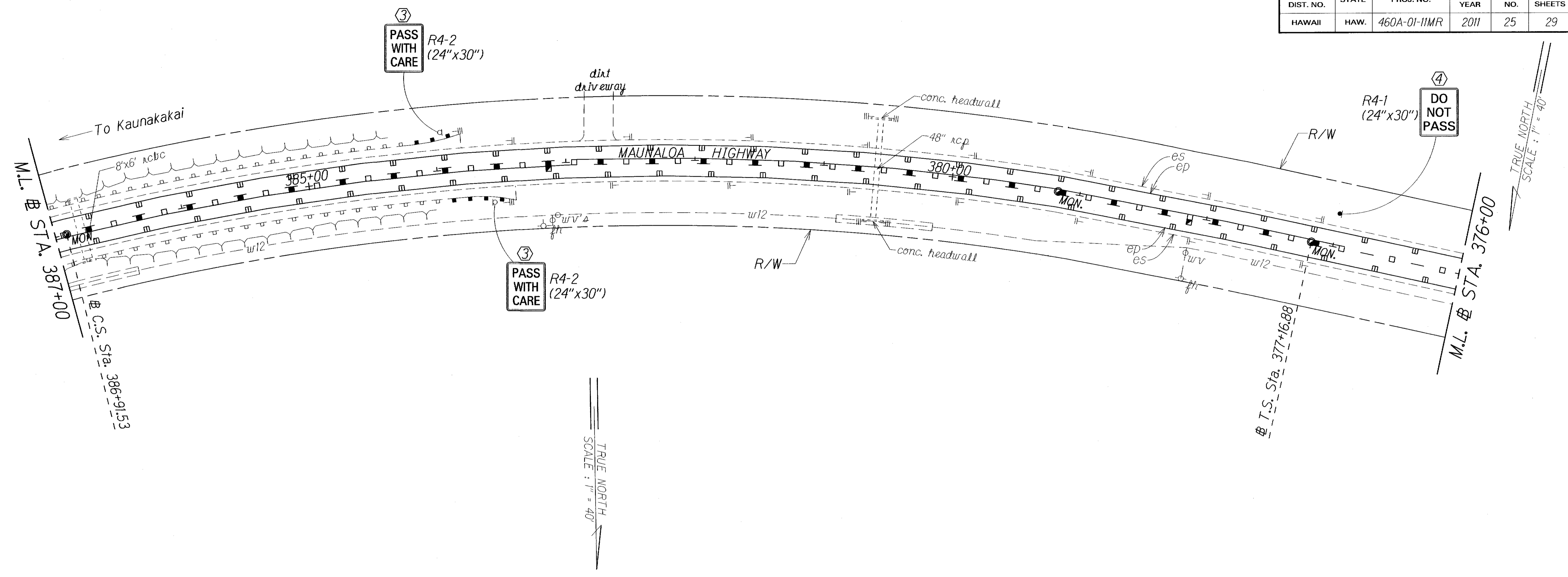
MAUNALOA HIGHWAY RESURFACING
Vicinity of Keonelele Avenue to Mahana
Project No. 460A-01-11MR

Scale: 1" = 40' Date: August, 2010

SHEET No. 1 OF 6 SHEETS

"AS-BUILT"

FED. ROAD DIST. NO.	STATE	PROJ. NO.	FISCAL YEAR	SHEET NO.	TOTAL SHEETS
HAWAII	HAW.	460A-01-11MR	2011	25	29



ORIGINAL PLAN	DATE
SURVEY PLOTTED BY	
DRAWN BY	
DESIGNED BY	
CHECKED BY	
NOTE BOOK	
NO. 10/11	

LEGEND FOR AS-BUILT POSTINGS

	Squiggly line for as-built deletion
	Double line for as-built deletion
Roadway	Text for as-built posting

- KEY:**
- ① Exist. Sign(s) & Post(s) to Remain
 - ② Remove Exist. Sign(s) & Post(s)
 - ③ Remove Exist. & Install New Sign(s) & Post(s)
 - ④ Install New Sign(s) & Post(s)

STATE OF HAWAII
DEPARTMENT OF TRANSPORTATION
HIGHWAYS DIVISION

SIGNING & PAVEMENT MARKING PLAN

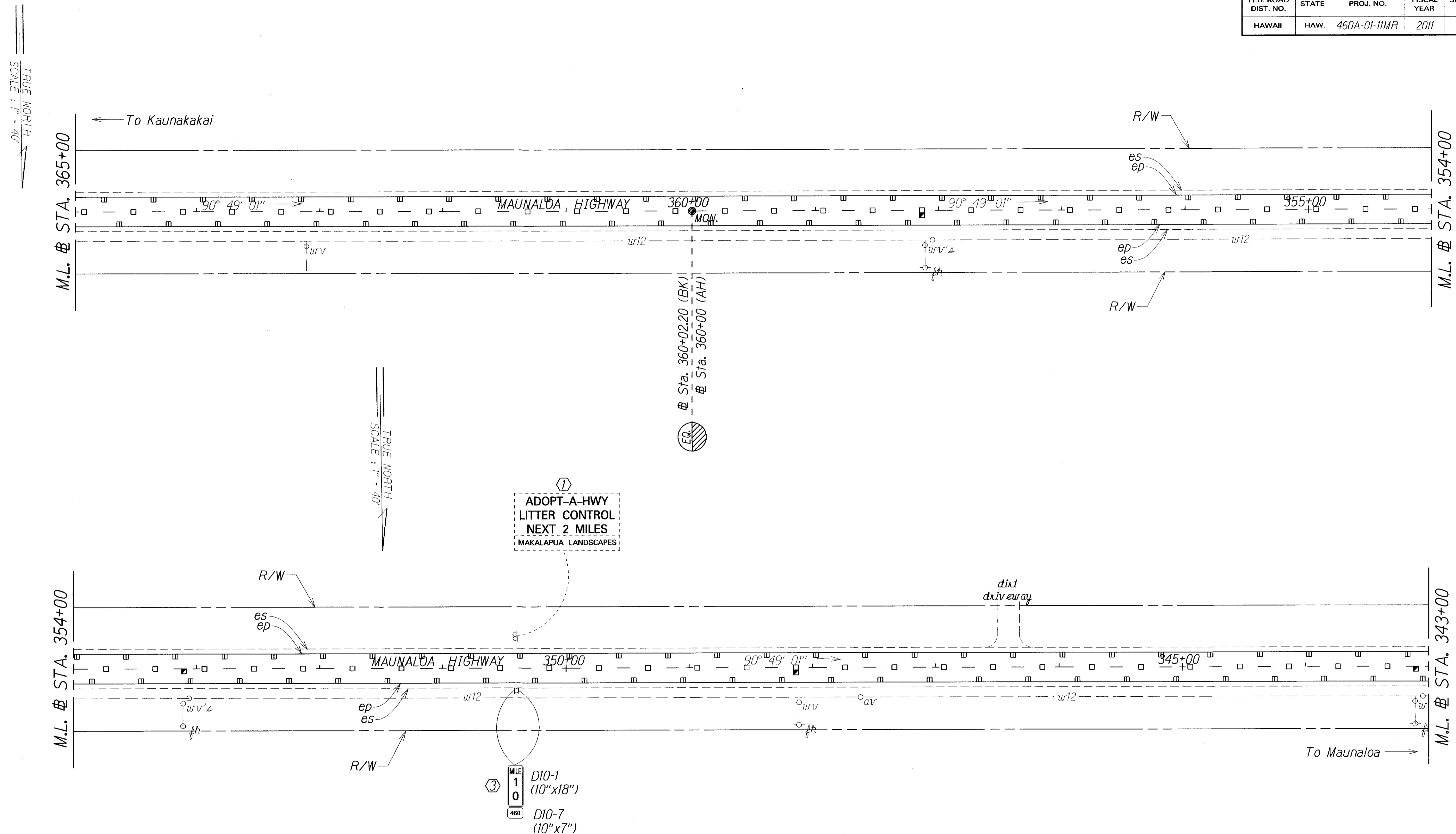
MAUNALOA HIGHWAY RESURFACING
Vicinity of Keonelele Avenue to Mahana
Project No. 460A-01-11MR

Scale: 1" = 40' Date: August, 2010

SHEET No. 2 OF 6 SHEETS

"AS-BUILT"

FED. ROAD DIST. NO.	STATE	PROJ. NO.	FISCAL YEAR	SHEET NO.	TOTAL SHEETS
HAWAII	HAW.	460A-01-IIMR	2011	26	29



ORIGINAL PLAN	SURVEY PLOTTED BY	DATE
NOTE BOOK	DRAWN BY	
QUANTITIES BY	DESIGNED BY	
CHECKED BY	CHECKED BY	

LEGEND FOR AS-BUILT POSTINGS	
	Squiggly line for as-built deletion
	Double line for as-built deletion
Roadway	Text for as-built posting

- KEY:
- ① Exist. Sign(s) & Post(s) to Remain
 - ② Remove Exist. Sign(s) & Post(s)
 - ③ Remove Exist. & Install New Sign(s) & Post(s)
 - ④ Install New Sign(s) & Post(s)

STATE OF HAWAII
DEPARTMENT OF TRANSPORTATION
HIGHWAYS DIVISION

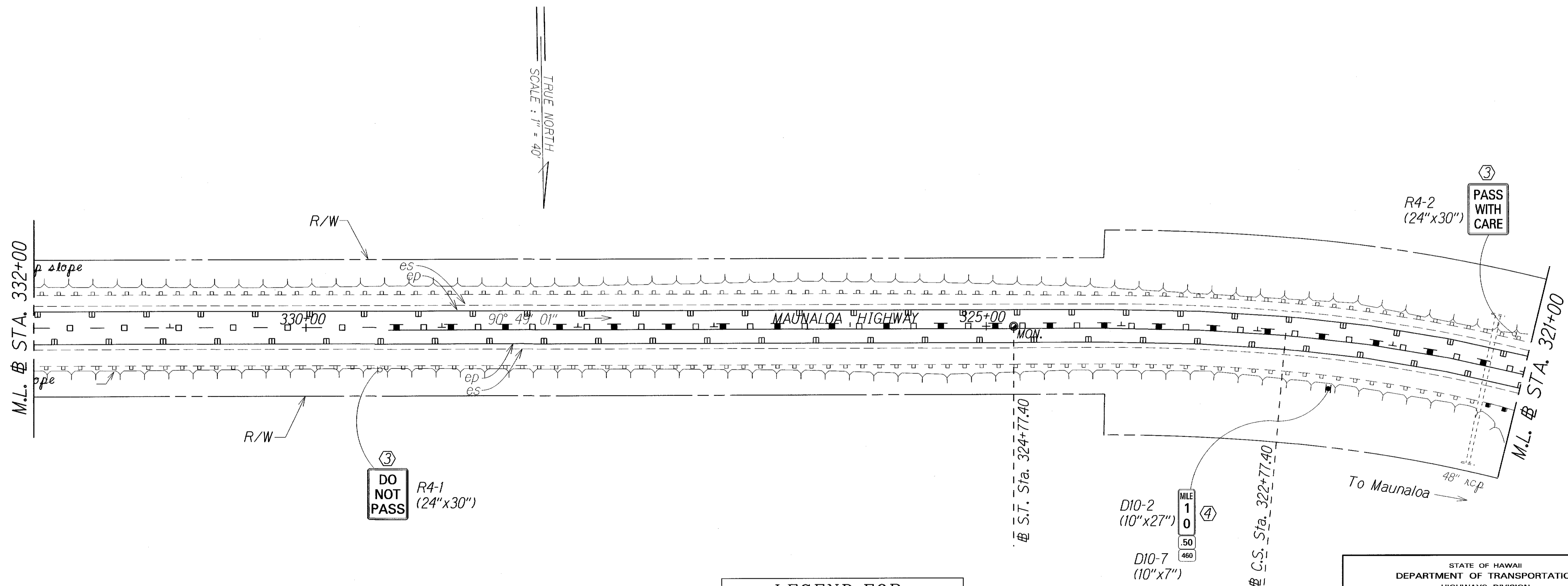
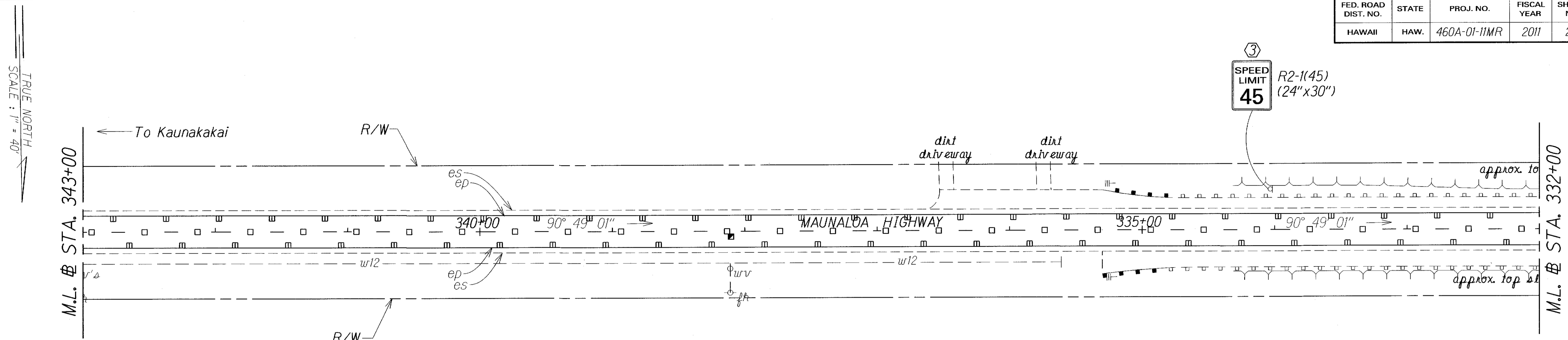
SIGNING & PAVEMENT MARKING PLAN

MAUNALOA HIGHWAY RESURFACING
Vicinity of Keonelele Avenue to Mahana
Project No. 460A-01-IIMR
Scale: 1" = 40' Date: August, 2010

SHEET No. 3 OF 6 SHEETS

"AS-BUILT"

FED. ROAD DIST. NO.	STATE	PROJ. NO.	FISCAL YEAR	SHEET NO.	TOTAL SHEETS
HAWAII	HAW.	460A-01-IIMR	2011	27	29



ORIGINAL PLAN	SURVEY PLOTTED BY	DATE
NOTE BOOK	DRAWN BY	
QUANTITIES BY	DESIGNED BY	
CHECKED BY		

LEGEND FOR AS-BUILT POSTINGS	
	Squiggly line for as-built deletion
	Double line for as-built deletion
Roadway	Text for as-built posting

- KEY:
- ① Exist. Sign(s) & Post(s) to Remain
 - ② Remove Exist. Sign(s) & Post(s)
 - ③ Remove Exist. & Install New Sign(s) & Post(s)
 - ④ Install New Sign(s) & Post(s)

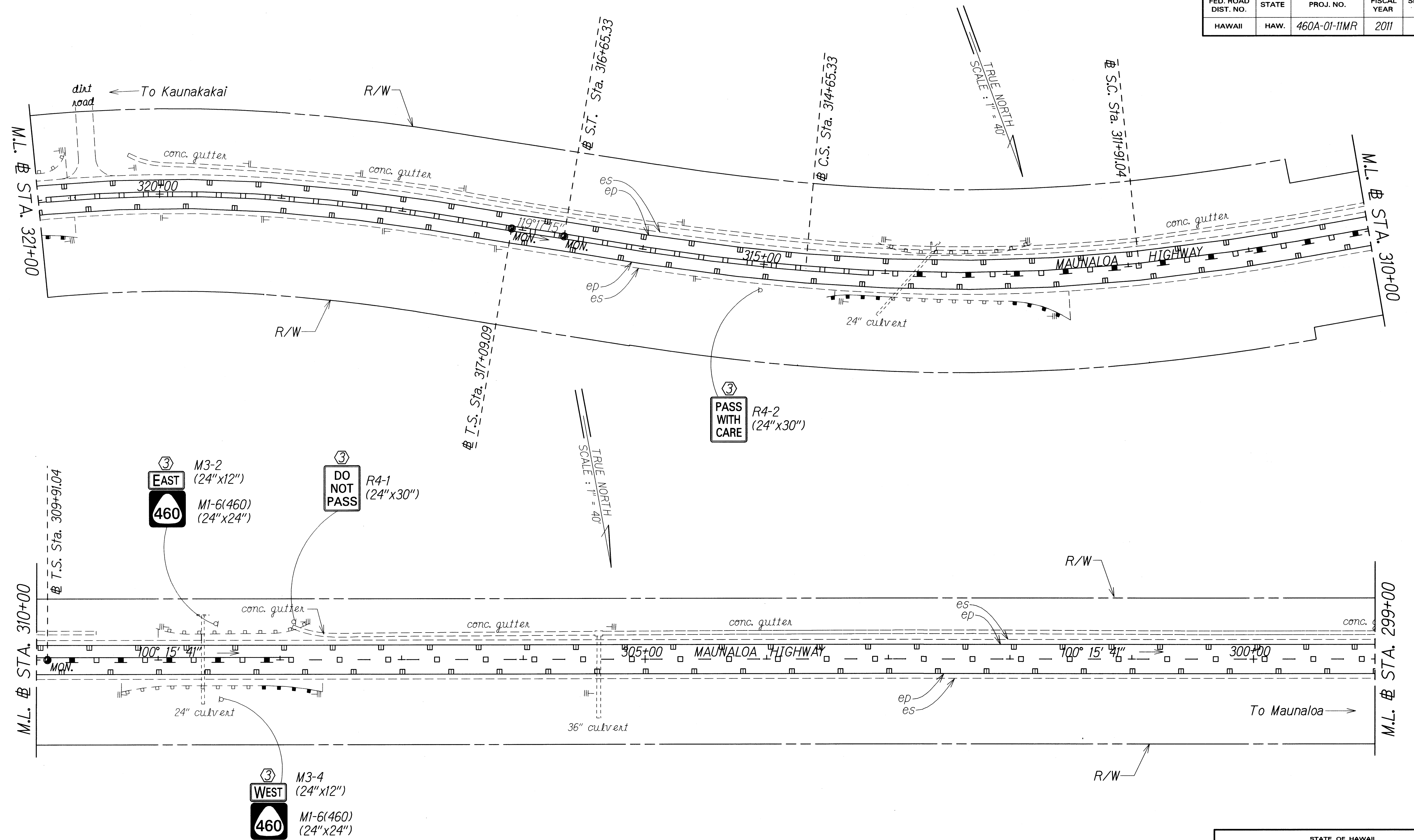
STATE OF HAWAII
DEPARTMENT OF TRANSPORTATION
HIGHWAYS DIVISION

SIGNING & PAVEMENT MARKING PLAN

MAUNALOA HIGHWAY RESURFACING
Vicinity of Keonelele Avenue to Mahana
Project No. 460A-01-IIMR
Scale: 1" = 40' Date: August, 2010

"AS-BUILT"

FED. ROAD DIST. NO.	STATE	PROJ. NO.	FISCAL YEAR	SHEET NO.	TOTAL SHEETS
HAWAII	HAW.	460A-01-11MR	2011	28	29



SURVEY PLOTTED BY	DATE
DRAWN BY	
TRACED BY	
NOTE BOOK	
DESIGNED BY	
CHECKED BY	
ORIGINAL PLAN	
DATE	
BY	
DATE	
BY	
DATE	
BY	

- KEY:**
- ① Exist. Sign(s) & Post(s) to Remain
 - ② Remove Exist. Sign(s) & Post(s)
 - ③ Remove Exist. & Install New Sign(s) & Post(s)
 - ④ Install New Sign(s) & Post(s)

STATE OF HAWAII
DEPARTMENT OF TRANSPORTATION
HIGHWAYS DIVISION

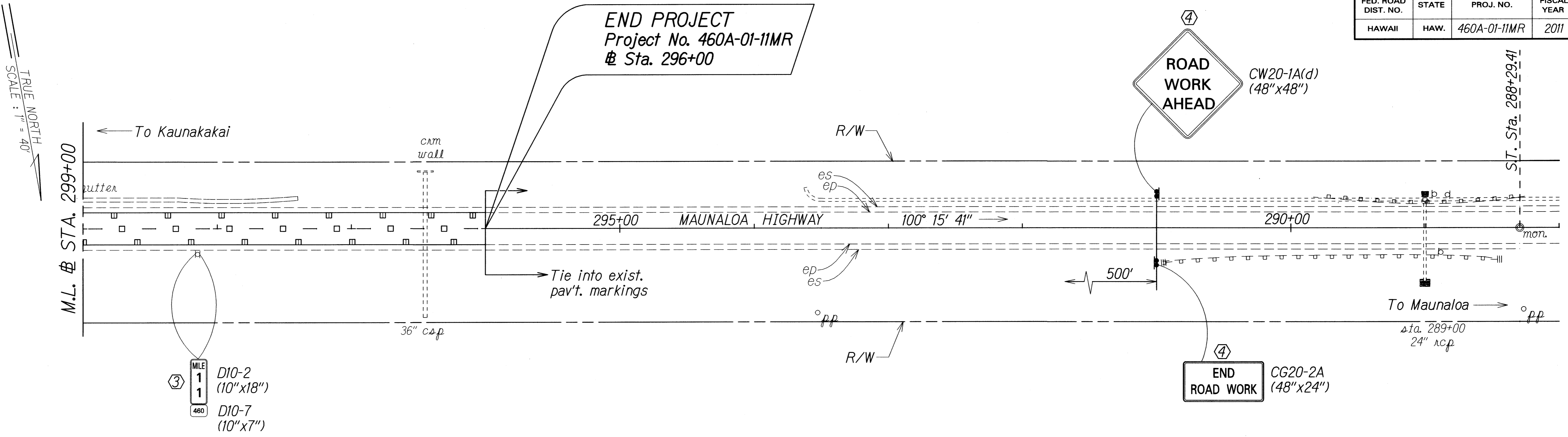
**SIGNING & PAVEMENT
MARKING PLAN**

MAUNALOA HIGHWAY RESURFACING
Vicinity of Keonelele Avenue to Mahana
Project No. 460A-01-11MR

Scale: 1" = 40' Date: August, 2010

SHEET No. 5 OF 6 SHEETS

FED. ROAD DIST. NO.	STATE	PROJ. NO.	FISCAL YEAR	SHEET NO.	TOTAL SHEETS
HAWAII	HAW.	460A-01-11MR	2011	29	29



③
 MILE
 1
 1
 460
 D10-2
 (10"x18")
 D10-7
 (10"x7")

④
 END
 ROAD WORK
 CG20-2A
 (48"x24")

④
 ROAD
 WORK
 AHEAD
 CW20-1A(d)
 (48"x48")

KEY:

- ① Exist. Sign(s) & Post(s) to Remain
- ② Remove Exist. Sign(s) & Post(s)
- ③ Remove Exist. & Install New Sign(s) & Post(s)
- ④ Install New Sign(s) & Post(s)

ORIGINAL PLAN	SURVEY PLOTTED BY	DATE
NOTE BOOK	DRAWN BY	
	TRACED BY	
	DESIGNED BY	
	CHECKED BY	

STATE OF HAWAII
 DEPARTMENT OF TRANSPORTATION
 HIGHWAYS DIVISION
SIGNING & PAVEMENT MARKING PLAN
 MAUNALOA HIGHWAY RESURFACING
 Vicinity of Keonelele Avenue to Mahana
 Project No. 460A-01-11MR
 Scale: 1" = 40' Date: August, 2010
 SHEET No. 6 OF 6 SHEETS