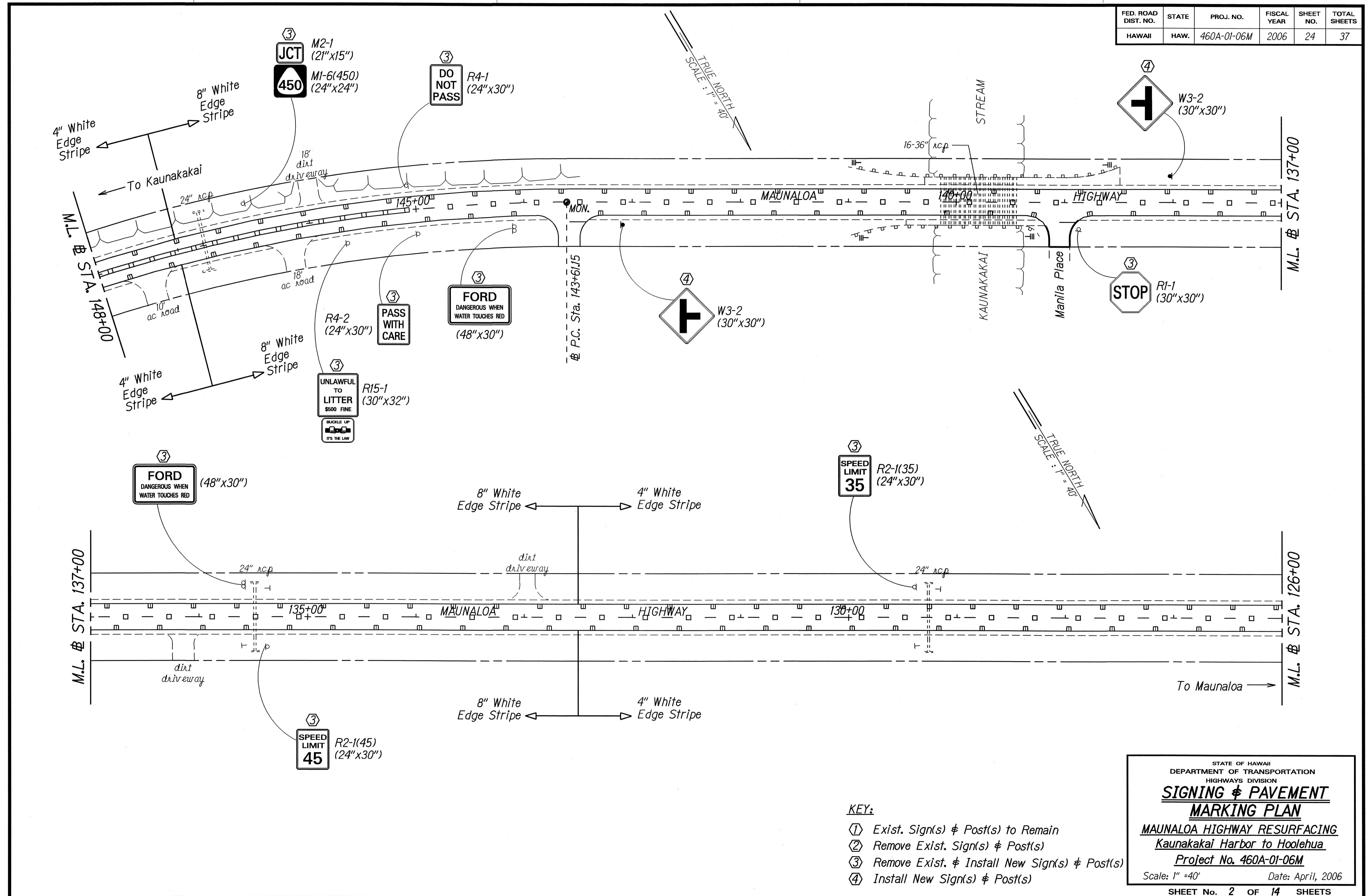


FED. ROAD DIST. NO.	STATE	PROJ. NO.	FISCAL YEAR	SHEET NO.	TOTAL SHEETS
HAWAII	HAW.	460A-01-06M	2006	24	37



DESIGNED BY	DATE
DRAWN BY	4/06
CHECKED BY	
IN CHARGE BY	
DATE	

- KEY:**
- ① Exist. Sign(s) & Post(s) to Remain
 - ② Remove Exist. Sign(s) & Post(s)
 - ③ Remove Exist. & Install New Sign(s) & Post(s)
 - ④ Install New Sign(s) & Post(s)

STATE OF HAWAII
DEPARTMENT OF TRANSPORTATION
HIGHWAYS DIVISION

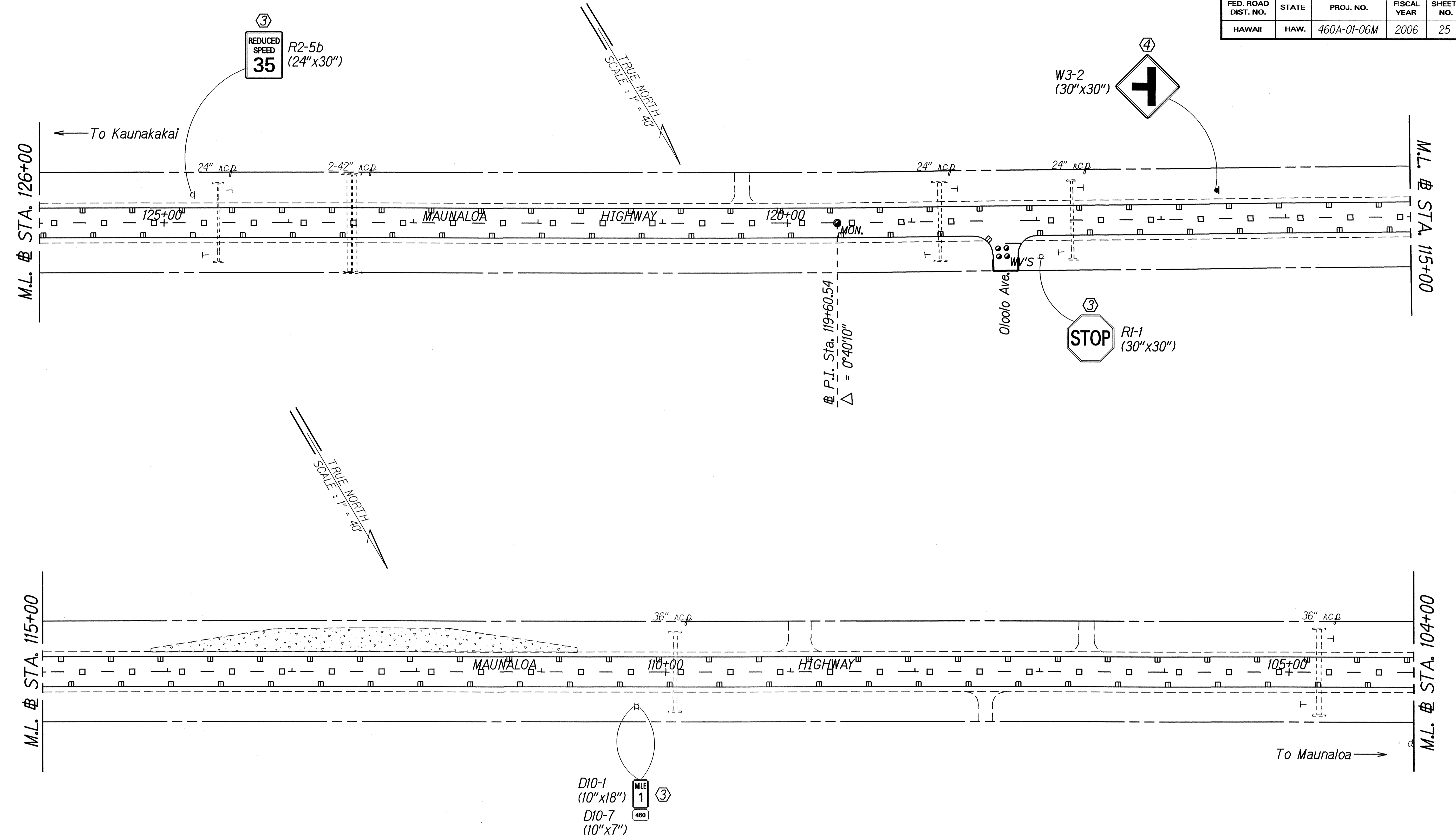
SIGNING & PAVEMENT MARKING PLAN

MAUNALOA HIGHWAY RESURFACING
Kaunakakai Harbor to Hoolehua
Project No. 460A-01-06M

Scale: 1" = 40' Date: April, 2006

SHEET No. 2 OF 14 SHEETS

FED. ROAD DIST. NO.	STATE	PROJ. NO.	FISCAL YEAR	SHEET NO.	TOTAL SHEETS
HAWAII	HAW.	460A-01-06M	2006	25	37



DESIGNED BY	DATE
DRAWN BY	4/06
CHECKED BY	
IN CHARGE	
NOTE BOOK	
QUANTITIES BY	
CHECKED BY	

- KEY:**
- ① Exist. Sign(s) & Post(s) to Remain
 - ② Remove Exist. Sign(s) & Post(s)
 - ③ Remove Exist. & Install New Sign(s) & Post(s)
 - ④ Install New Sign(s) & Post(s)

STATE OF HAWAII
DEPARTMENT OF TRANSPORTATION
HIGHWAYS DIVISION

**SIGNING & PAVEMENT
MARKING PLAN**

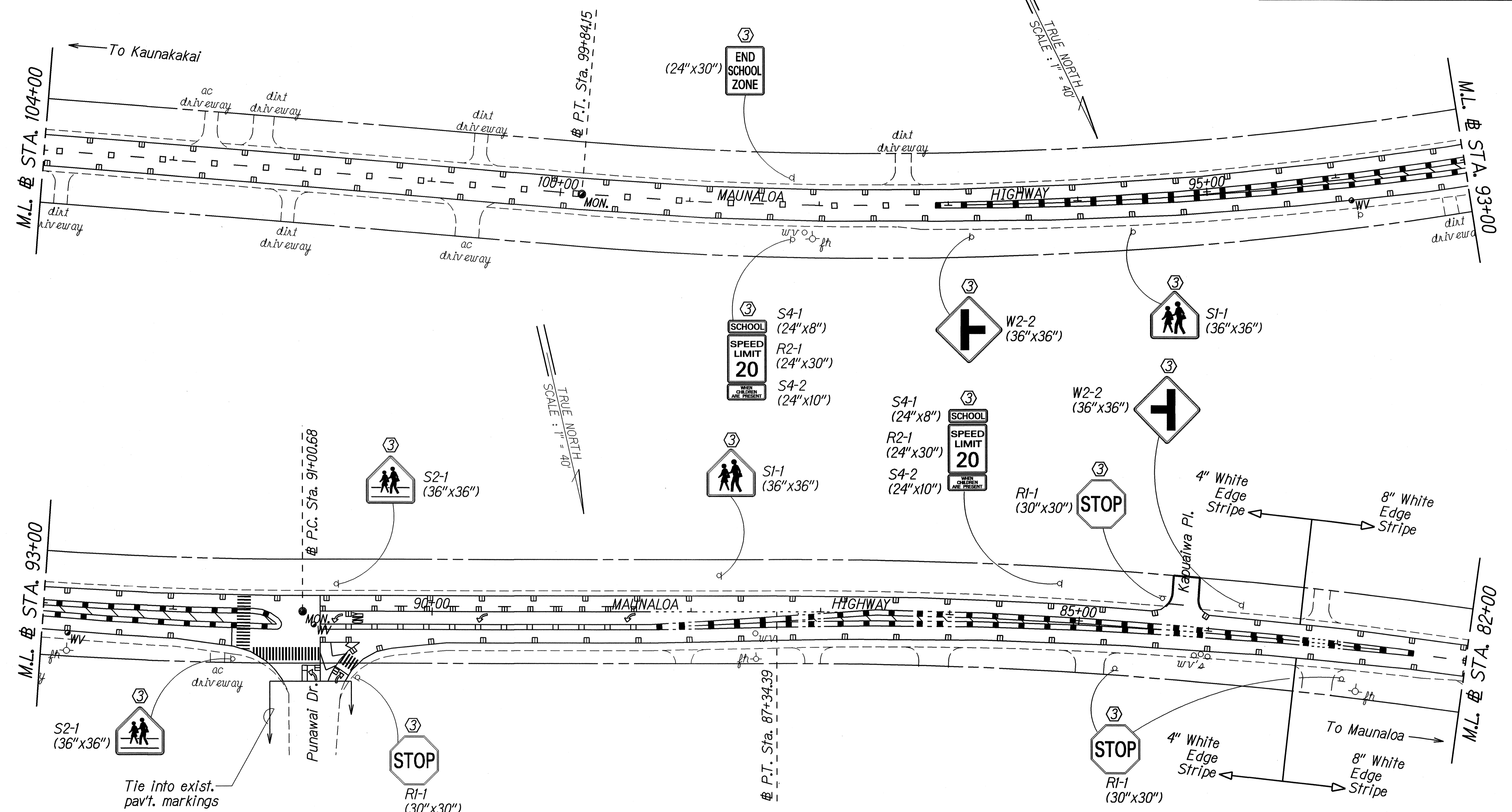
**MAUNALOA HIGHWAY RESURFACING
Kaunakakai Harbor to Hoolehua**

Project No. 460A-01-06M

Scale: 1" = 40' Date: April, 2006

SHEET No. 2 OF 14 SHEETS

FED. ROAD DIST. NO.	STATE	PROJ. NO.	FISCAL YEAR	SHEET NO.	TOTAL SHEETS
HAWAII	HAW.	460A-01-06M	2006	26	37



ORIGINAL PLAN	DATE
SURVEY PLOTTED BY	4/06
TRACED BY	
NOTE BOOK DESIGNED BY	
QUANTITIES BY	
CHECKED BY	

- KEY:**
- ① Exist. Sign(s) & Post(s) to Remain
 - ② Remove Exist. Sign(s) & Post(s)
 - ③ Remove Exist. & Install New Sign(s) & Post(s)
 - ④ Install New Sign(s) & Post(s)

STATE OF HAWAII
DEPARTMENT OF TRANSPORTATION
HIGHWAYS DIVISION

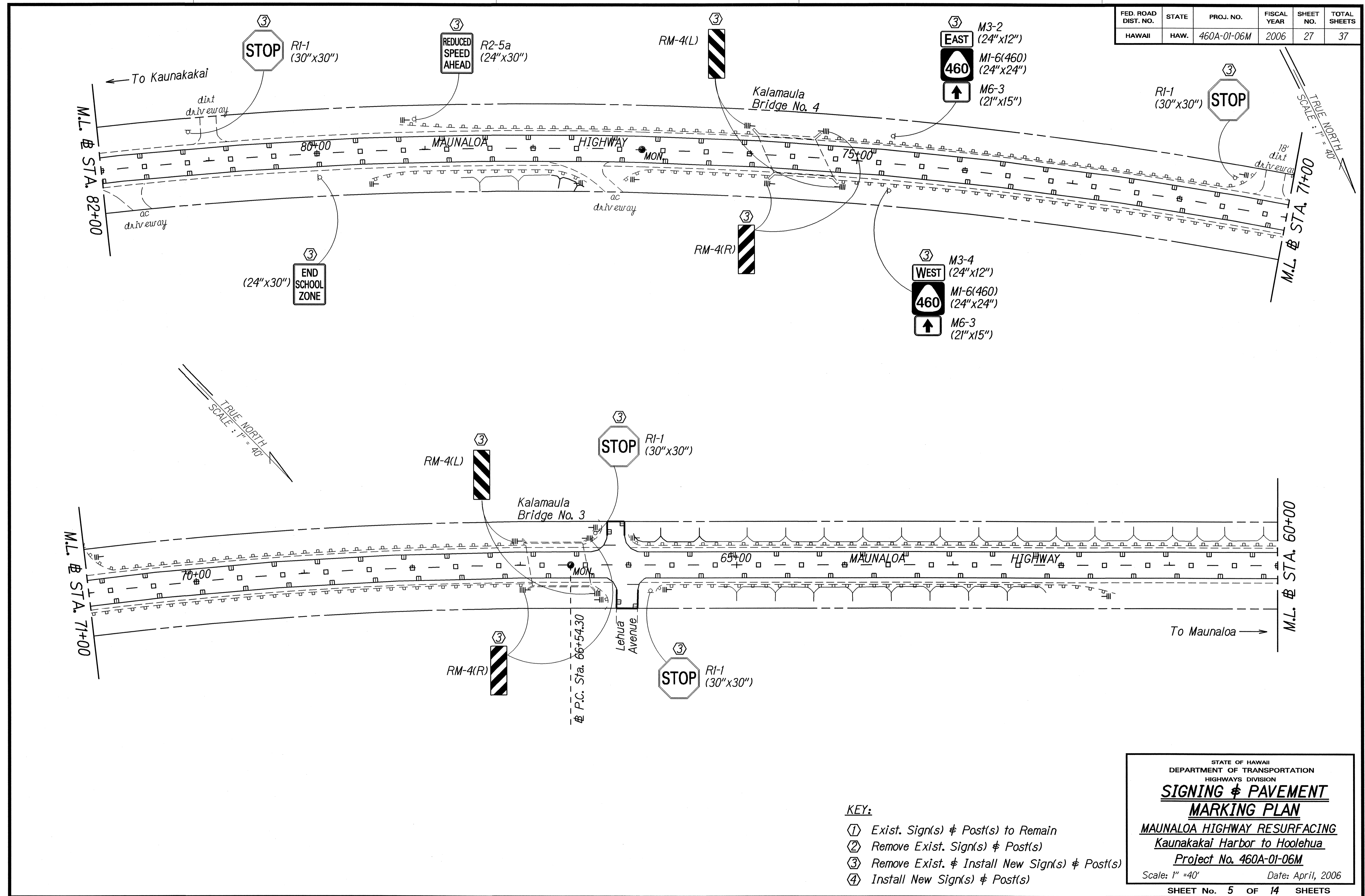
SIGNING & PAVEMENT MARKING PLAN

MAUNALOA HIGHWAY RESURFACING
Kaunakakai Harbor to Hoolehua
Project No. 460A-01-06M

Scale: 1" = 40' Date: April, 2006

SHEET No. 4 OF 14 SHEETS

FED. ROAD DIST. NO.	STATE	PROJ. NO.	FISCAL YEAR	SHEET NO.	TOTAL SHEETS
HAWAII	HAW.	460A-01-06M	2006	27	37



DESIGNED BY	DATE
DRAWN BY	4/06
CHECKED BY	
NOTED BY	
QUANTITIES BY	
CHECKED BY	

- KEY:**
- ① Exist. Sign(s) & Post(s) to Remain
 - ② Remove Exist. Sign(s) & Post(s)
 - ③ Remove Exist. & Install New Sign(s) & Post(s)
 - ④ Install New Sign(s) & Post(s)

STATE OF HAWAII
DEPARTMENT OF TRANSPORTATION
HIGHWAYS DIVISION

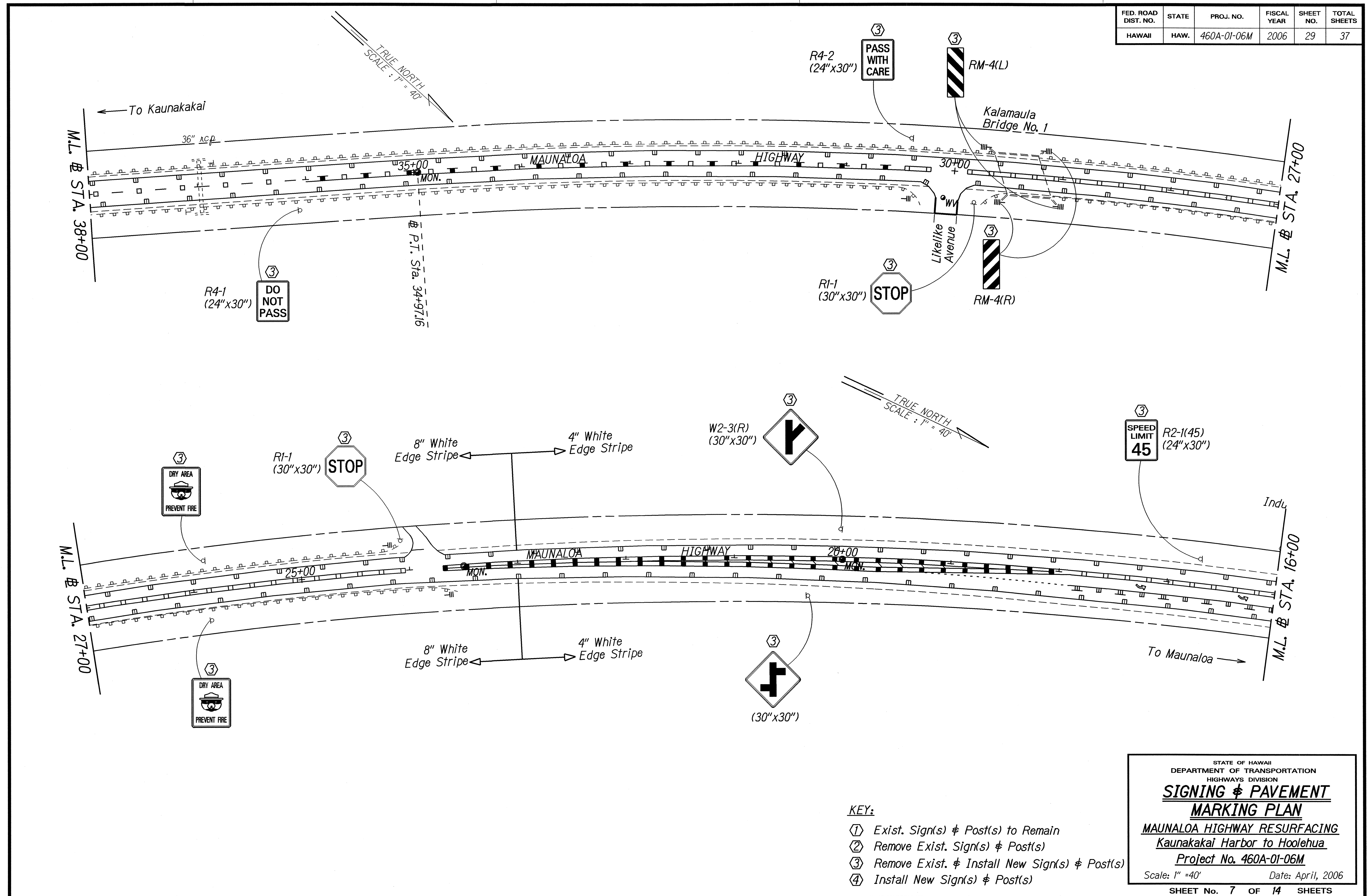
SIGNING & PAVEMENT MARKING PLAN

MAUNALOA HIGHWAY RESURFACING
Kaunakakai Harbor to Hoolehua
Project No. 460A-01-06M

Scale: 1" = 40' Date: April, 2006

SHEET No. 5 OF 14 SHEETS

FED. ROAD DIST. NO.	STATE	PROJ. NO.	FISCAL YEAR	SHEET NO.	TOTAL SHEETS
HAWAII	HAW.	460A-01-06M	2006	29	37



DESIGNED BY	DATE
DRAWN BY	4/10/06
CHECKED BY	
IN CHARGE	

- KEY:**
- ① Exist. Sign(s) & Post(s) to Remain
 - ② Remove Exist. Sign(s) & Post(s)
 - ③ Remove Exist. & Install New Sign(s) & Post(s)
 - ④ Install New Sign(s) & Post(s)

STATE OF HAWAII
DEPARTMENT OF TRANSPORTATION
HIGHWAYS DIVISION

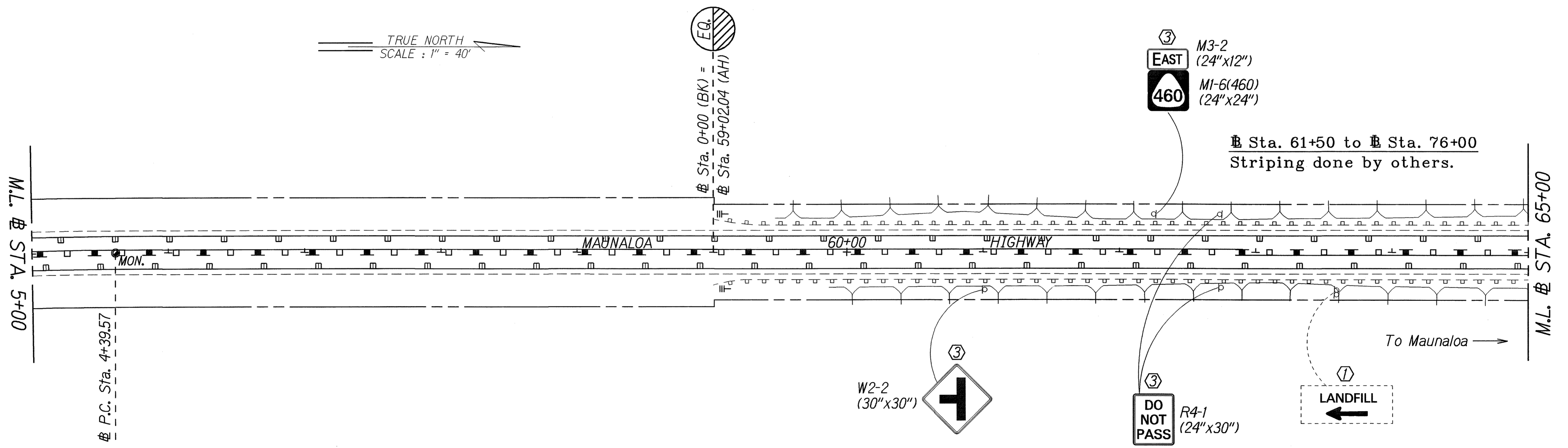
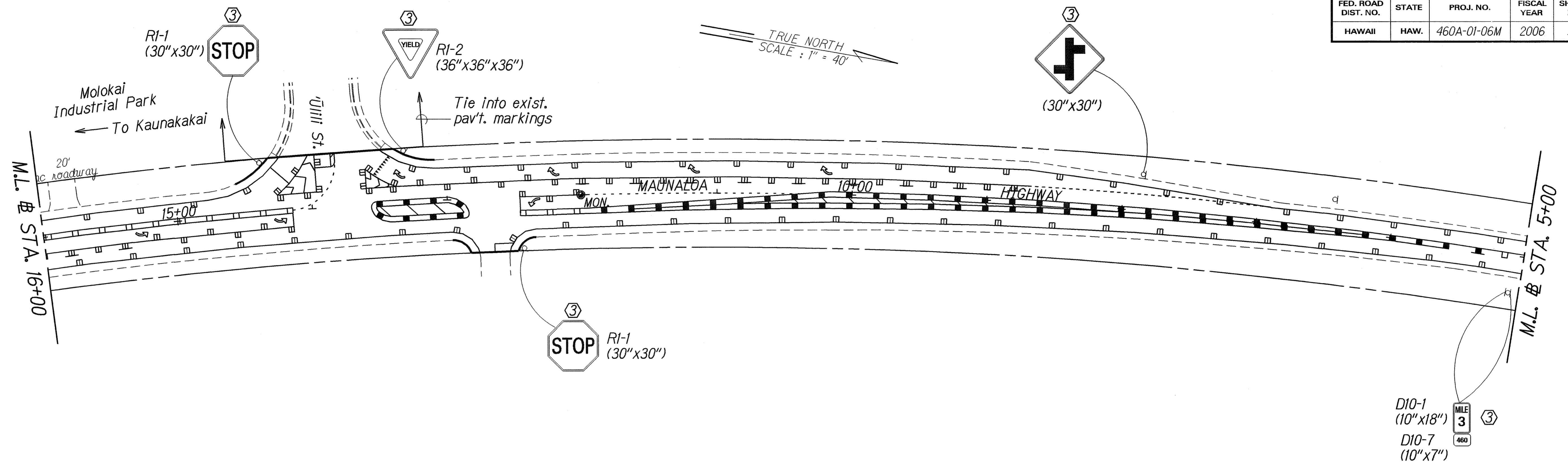
SIGNING & PAVEMENT MARKING PLAN

MAUNALOA HIGHWAY RESURFACING
Kaunakakai Harbor to Hoolehua
Project No. 460A-01-06M

Scale: 1" = 40' Date: April, 2006

SHEET No. 7 OF 14 SHEETS

FED. ROAD DIST. NO.	STATE	PROJ. NO.	FISCAL YEAR	SHEET NO.	TOTAL SHEETS
HAWAII	HAW.	460A-01-06M	2006	30	37



LEGEND FOR AS-BUILT POSTINGS

	Squiggly line for as-built deletion
	Double line for as-built deletion
Roadway	Text for as-built posting

- KEY:**
- ① Exist. Sign(s) & Post(s) to Remain
 - ② Remove Exist. Sign(s) & Post(s)
 - ③ Remove Exist. & Install New Sign(s) & Post(s)
 - ④ Install New Sign(s) & Post(s)

STATE OF HAWAII
DEPARTMENT OF TRANSPORTATION
HIGHWAYS DIVISION

SIGNING & PAVEMENT MARKING PLAN

MAUNALOA HIGHWAY RESURFACING
Kaunakakai Harbor to Hoolehua
Project No. 460A-01-06M

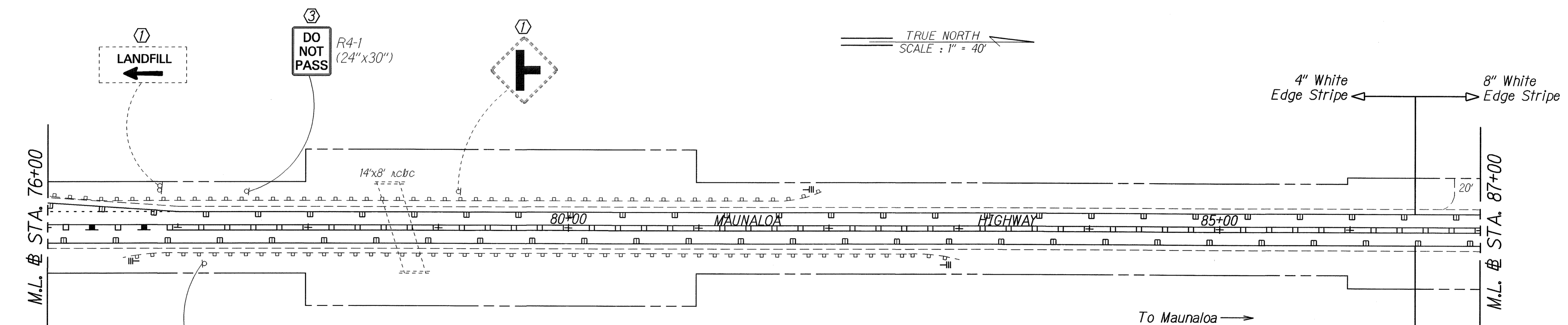
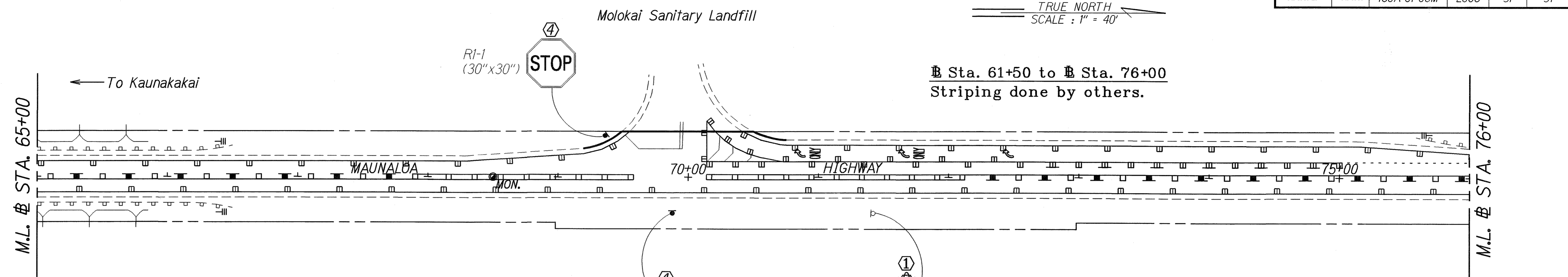
Scale: 1" = 40' Date: April, 2006

SHEET No. 8 OF 14 SHEETS

ORIGINAL PLAN	SURVEY PLOTTED BY	DATE
NOTE BOOK	DRAWN BY	4/16
DESIGNED BY	CHECKED BY	
CHECKED BY		

"AS-BUILT"

FED. ROAD DIST. NO.	STATE	PROJ. NO.	FISCAL YEAR	SHEET NO.	TOTAL SHEETS
HAWAII	HAW.	460A-01-06M	2006	31	37



SURVEY ELABORATED BY: _____ DATE: 4/06
 ORIGINAL PLAN DRAWN BY: _____
 TRACED BY: _____
 NOTES BOOK DESIGNED BY: _____
 CHECKED BY: _____
 APPROVED BY: _____

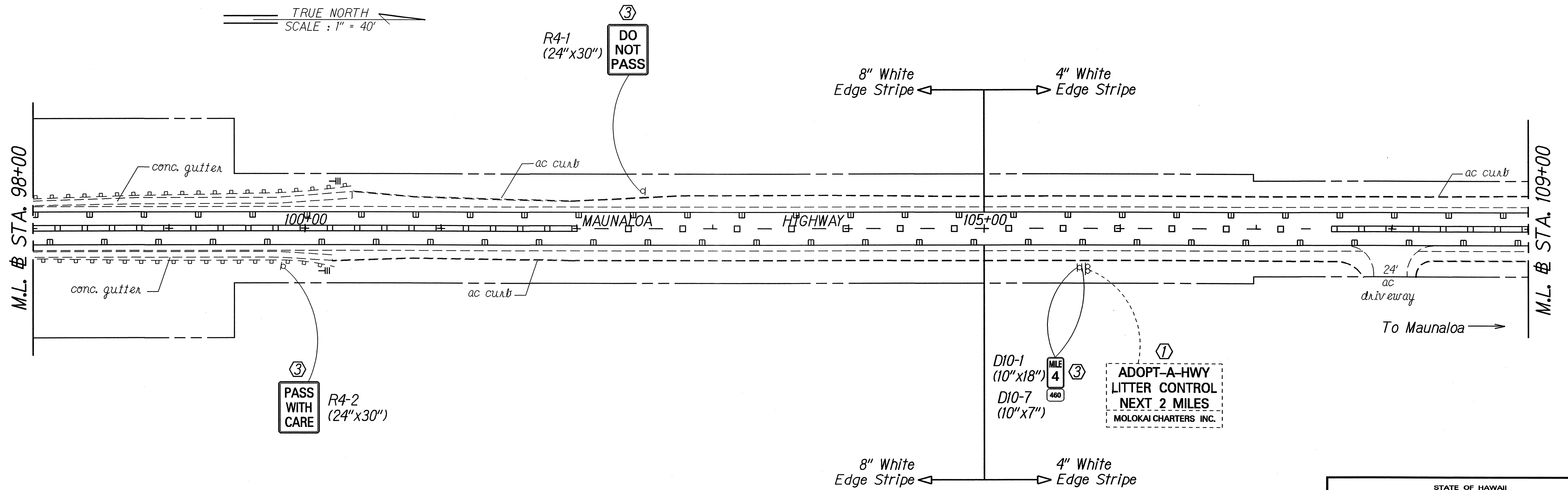
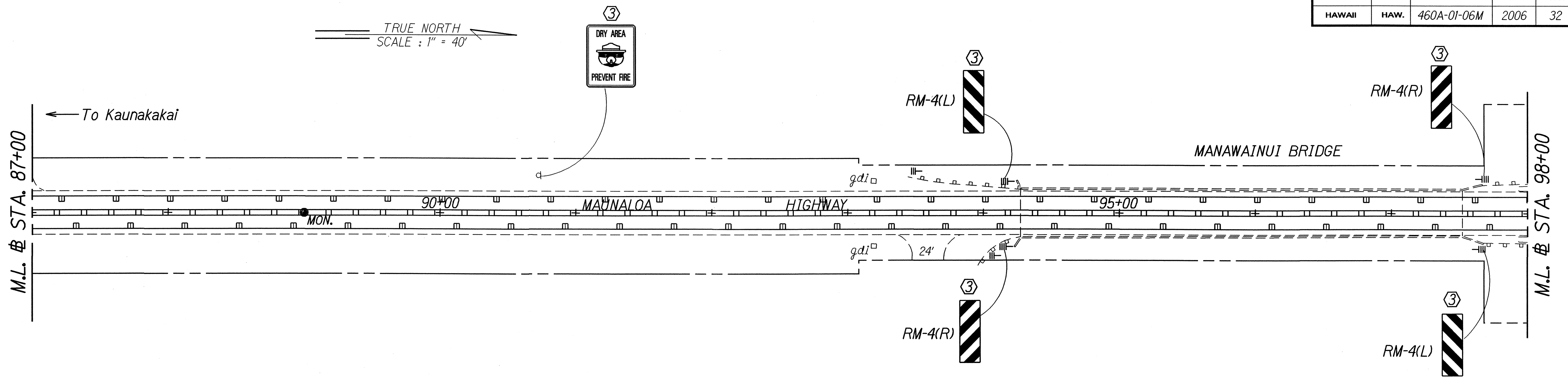
LEGEND FOR AS-BUILT POSTINGS	
	Squiggly line for as-built deletion
	Double line for as-built deletion
Roadway	Text for as-built posting

- KEY:**
- ① Exist. Sign(s) & Post(s) to Remain
 - ② Remove Exist. Sign(s) & Post(s)
 - ③ Remove Exist. & Install New Sign(s) & Post(s)
 - ④ Install New Sign(s) & Post(s)

STATE OF HAWAII
 DEPARTMENT OF TRANSPORTATION
 HIGHWAYS DIVISION
SIGNING & PAVEMENT MARKING PLAN
 MAUNALOA HIGHWAY RESURFACING
 Kaunakakai Harbor to Hoolehua
 Project No. 460A-01-06M
 Scale: 1" = 40' Date: April, 2006
 SHEET No. 9 OF 14 SHEETS

"AS-BUILT"

FED. ROAD DIST. NO.	STATE	PROJ. NO.	FISCAL YEAR	SHEET NO.	TOTAL SHEETS
HAWAII	HAW.	460A-01-06M	2006	32	37



DESIGNED BY	DATE
DRAWN BY	4/06
CHECKED BY	
NOTED BY	
QUANTITIES BY	
CHECKED BY	

- KEY:**
- ① Exist. Sign(s) & Post(s) to Remain
 - ② Remove Exist. Sign(s) & Post(s)
 - ③ Remove Exist. & Install New Sign(s) & Post(s)
 - ④ Install New Sign(s) & Post(s)

STATE OF HAWAII
DEPARTMENT OF TRANSPORTATION
HIGHWAYS DIVISION

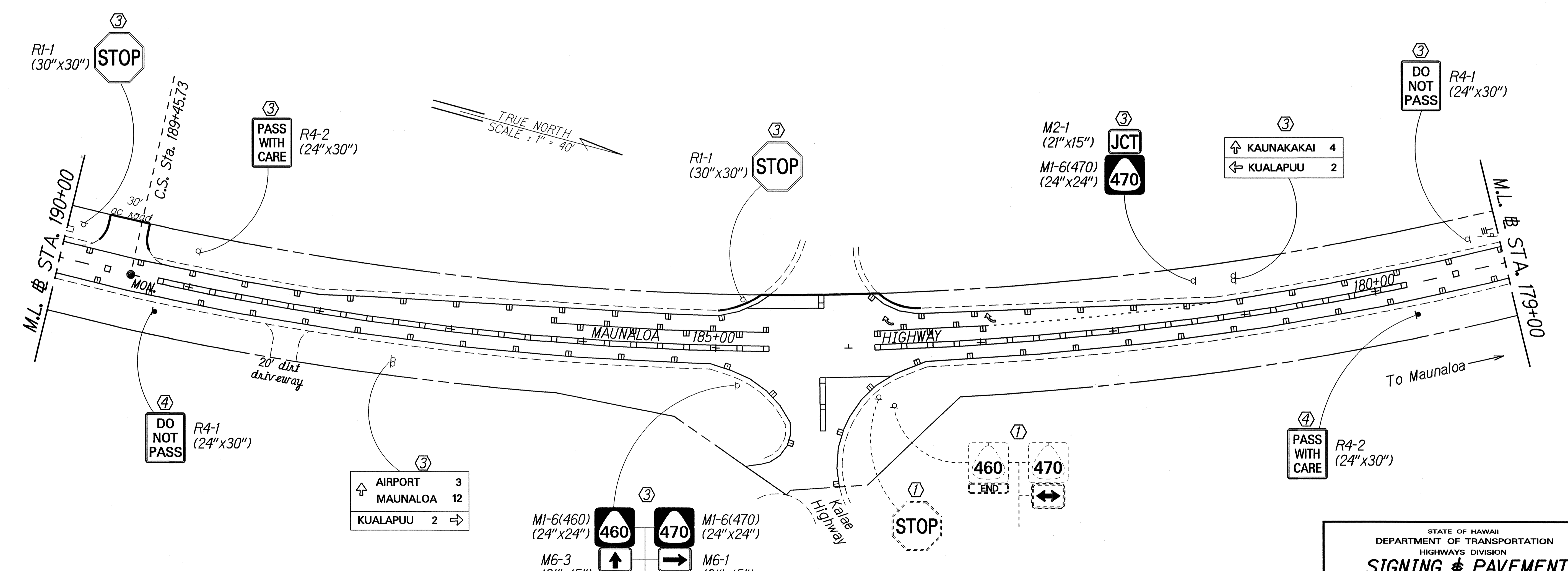
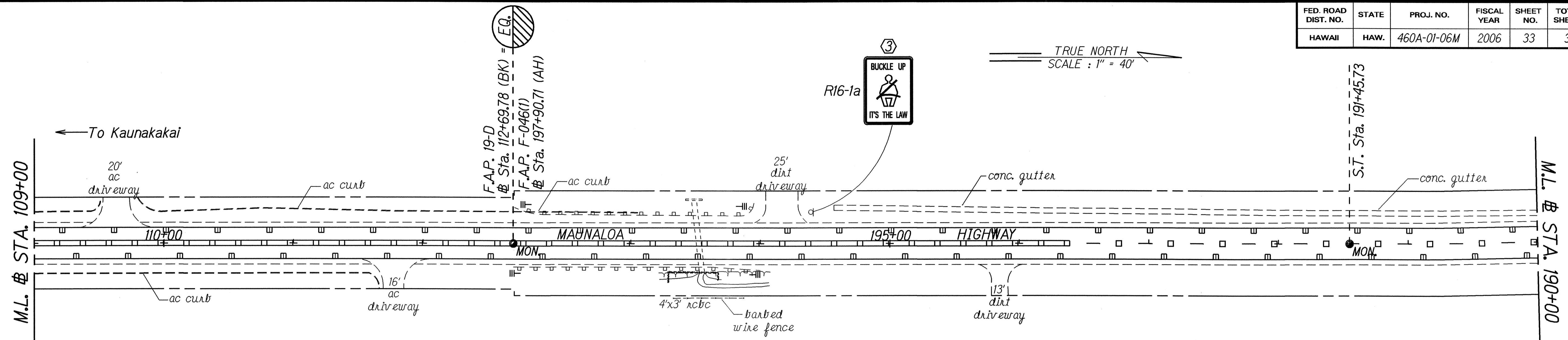
SIGNING & PAVEMENT MARKING PLAN

MAUNALOA HIGHWAY RESURFACING
Kaunakakai Harbor to Hoolehua
Project No. 460A-01-06M

Scale: 1" = 40' Date: April, 2006

SHEET No. 10 OF 14 SHEETS

FED. ROAD DIST. NO.	STATE	PROJ. NO.	FISCAL YEAR	SHEET NO.	TOTAL SHEETS
HAWAII	HAW.	460A-01-06M	2006	33	37



DESIGNED BY	DATE
DRAWN BY	4/06
CHECKED BY	
QUANTITIES BY	
NOTED BY	
ORIGINAL PLAN	

- KEY:**
- ① Exist. Sign(s) & Post(s) to Remain
 - ② Remove Exist. Sign(s) & Post(s)
 - ③ Remove Exist. & Install New Sign(s) & Post(s)
 - ④ Install New Sign(s) & Post(s)

STATE OF HAWAII
DEPARTMENT OF TRANSPORTATION
HIGHWAYS DIVISION

**SIGNING & PAVEMENT
MARKING PLAN**

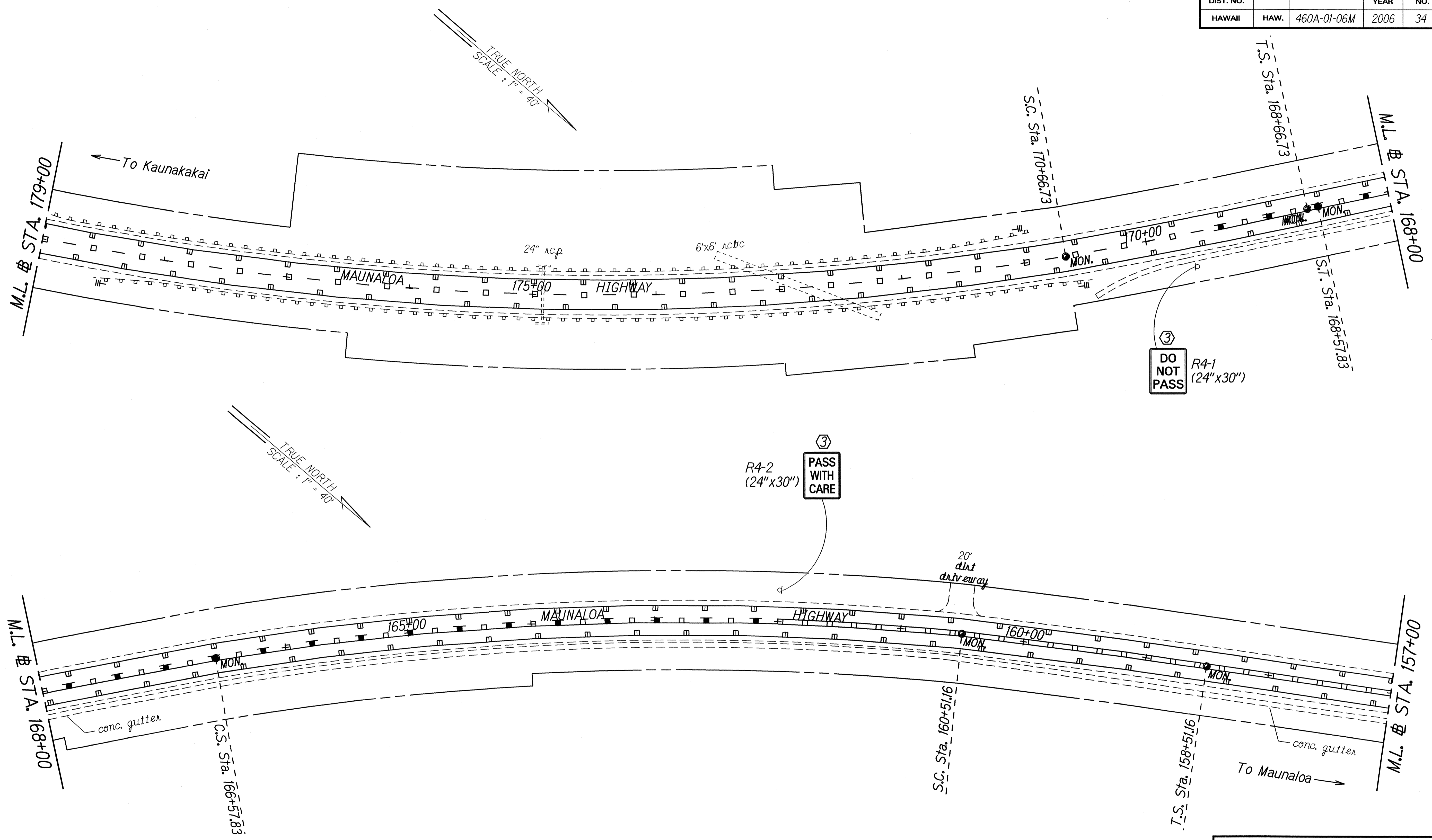
**MAUNALOA HIGHWAY RESURFACING
Kaunakakai Harbor to Hoolehua**

Project No. 460A-01-06M

Scale: 1" = 40' Date: April, 2006

SHEET No. 11 OF 14 SHEETS

FED. ROAD DIST. NO.	STATE	PROJ. NO.	FISCAL YEAR	SHEET NO.	TOTAL SHEETS
HAWAII	HAW.	460A-01-06M	2006	34	37



DESIGNED BY	DATE
DRAWN BY	
QUANTITIES BY	
CHECKED BY	

- KEY:**
- ① Exist. Sign(s) & Post(s) to Remain
 - ② Remove Exist. Sign(s) & Post(s)
 - ③ Remove Exist. & Install New Sign(s) & Post(s)
 - ④ Install New Sign(s) & Post(s)

STATE OF HAWAII
DEPARTMENT OF TRANSPORTATION
HIGHWAYS DIVISION

**SIGNING & PAVEMENT
MARKING PLAN**

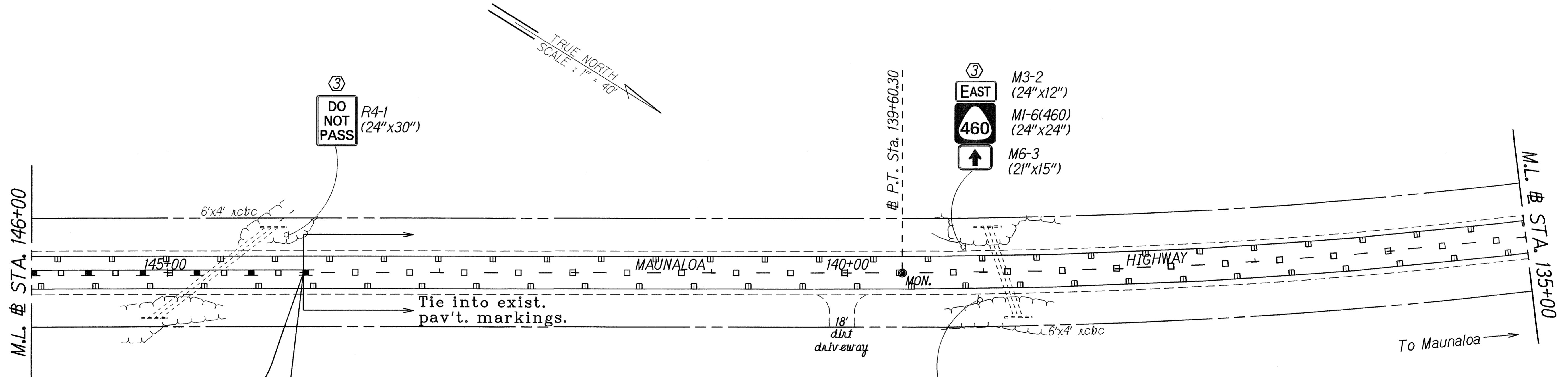
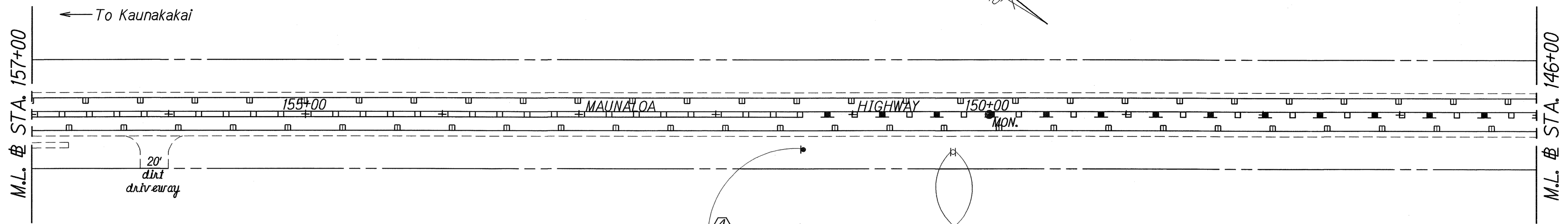
**MAUNALOA HIGHWAY RESURFACING
Kaunakakai Harbor to Hoolehua**

Project No. 460A-01-06M

Scale: 1" = 40' Date: April, 2006

SHEET No. 12 OF 14 SHEETS

FED. ROAD DIST. NO.	STATE	PROJ. NO.	FISCAL YEAR	SHEET NO.	TOTAL SHEETS
HAWAII	HAW.	460A-01-06M	2006	35	37



END PROJECT
Project No. 460A-01-06M
Sta. 144+00

LEGEND FOR AS-BUILT POSTINGS

	Squiggly line for as-built deletion
	Double line for as-built deletion
Roadway	Text for as-built posting

- KEY:**
- ① Exist. Sign(s) & Post(s) to Remain
 - ② Remove Exist. Sign(s) & Post(s)
 - ③ Remove Exist. & Install New Sign(s) & Post(s)
 - ④ Install New Sign(s) & Post(s)

STATE OF HAWAII
DEPARTMENT OF TRANSPORTATION
HIGHWAYS DIVISION

SIGNING & PAVEMENT MARKING PLAN

MAUNALOA HIGHWAY RESURFACING
Kaunakakai Harbor to Hoolehua
Project No. 460A-01-06M

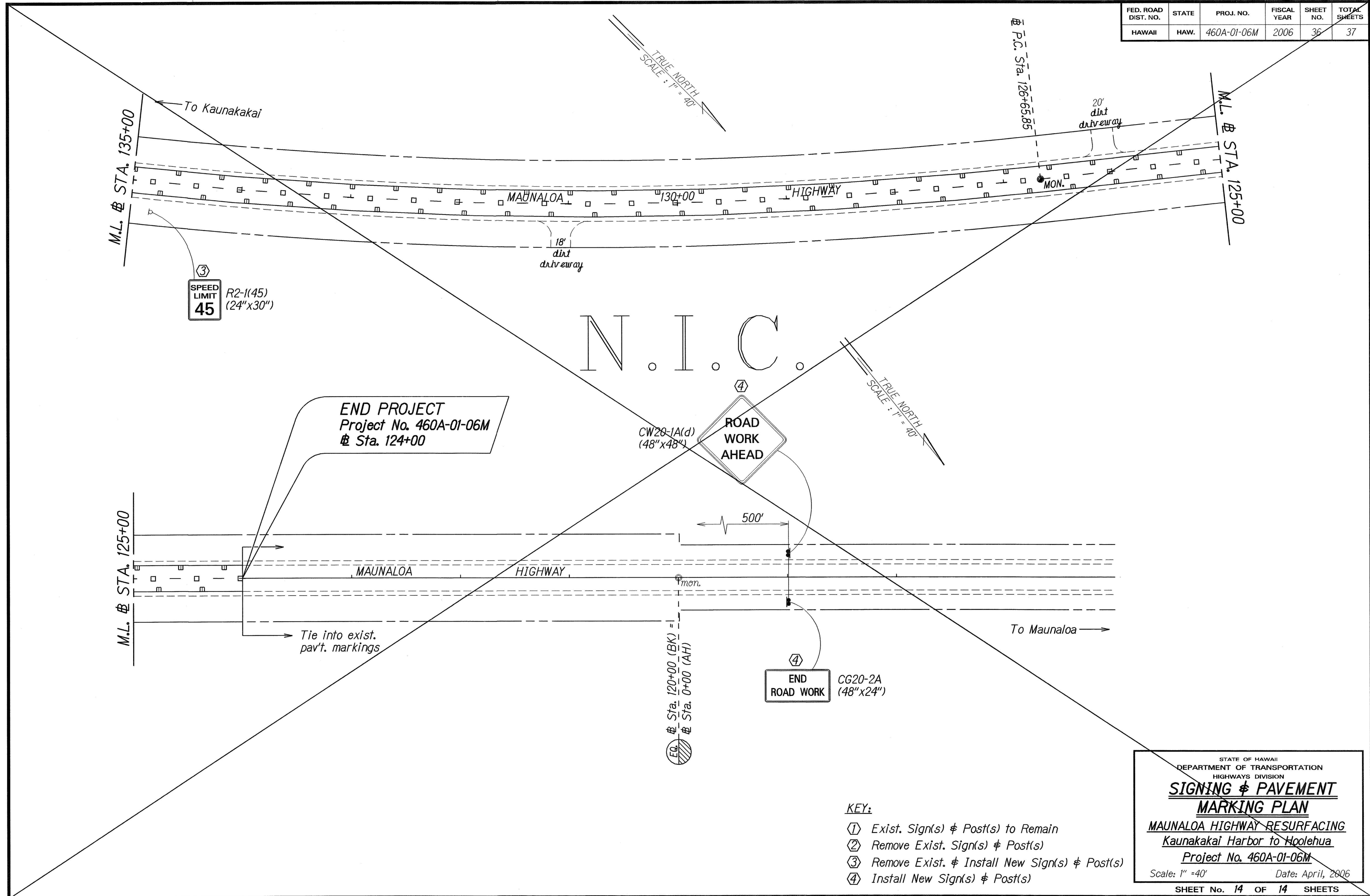
Scale: 1" = 40' Date: April, 2006

SHEET No. 13 OF 14 SHEETS

SURVEY PLOTTED BY	DATE
DRAWN BY	4/16
DESIGNED BY	
QUANTITIES BY	
CHECKED BY	
ORIGINAL PLAN	
NOTE BOOK	
DESIGNED BY	
QUANTITIES BY	
CHECKED BY	

"AS-BUILT"

FED. ROAD DIST. NO.	STATE	PROJ. NO.	FISCAL YEAR	SHEET NO.	TOTAL SHEETS
HAWAII	HAW.	460A-01-06M	2006	36	37



ORIGINAL PLAN	DATE
SURVEY PLOTTED BY	DATE
DRAWN BY	DATE
DESIGNED BY	DATE
CHECKED BY	DATE

- KEY:
- ① Exist. Sign(s) & Post(s) to Remain
 - ② Remove Exist. Sign(s) & Post(s)
 - ③ Remove Exist. & Install New Sign(s) & Post(s)
 - ④ Install New Sign(s) & Post(s)

STATE OF HAWAII
DEPARTMENT OF TRANSPORTATION
HIGHWAYS DIVISION

**SIGNING & PAVEMENT
MARKING PLAN**

**MAUNALOA HIGHWAY RESURFACING
Kaunakakai Harbor to Hoolehua**

Project No. 460A-01-06M

Scale: 1" = 40' Date: April, 2006

SHEET No. 14 OF 14 SHEETS

"AS-BUILT"