

INDEX TO DRAWINGS	
SHEET NO.	DESCRIPTION
1	TITLE SHEET
2	GENERAL NOTES, ABBREV., LEGEND
3-4	WATER POLLUTION & EROSION CONTROL NOTES
5-7	TRAFFIC CONTROL NOTES AND PLANS
8	EROSION CONTROL PLAN
9	DRAINAGE CONTROL PLAN
10-12	PROFILES
13-16	DRAINAGE MISC. DETAILS

STATE OF HAWAII

DEPARTMENT OF TRANSPORTATION

HIGHWAYS DIVISION

HONOLULU, HAWAII

"AS-BUILT"

PLANS FOR

MAUNALOA HIGHWAY

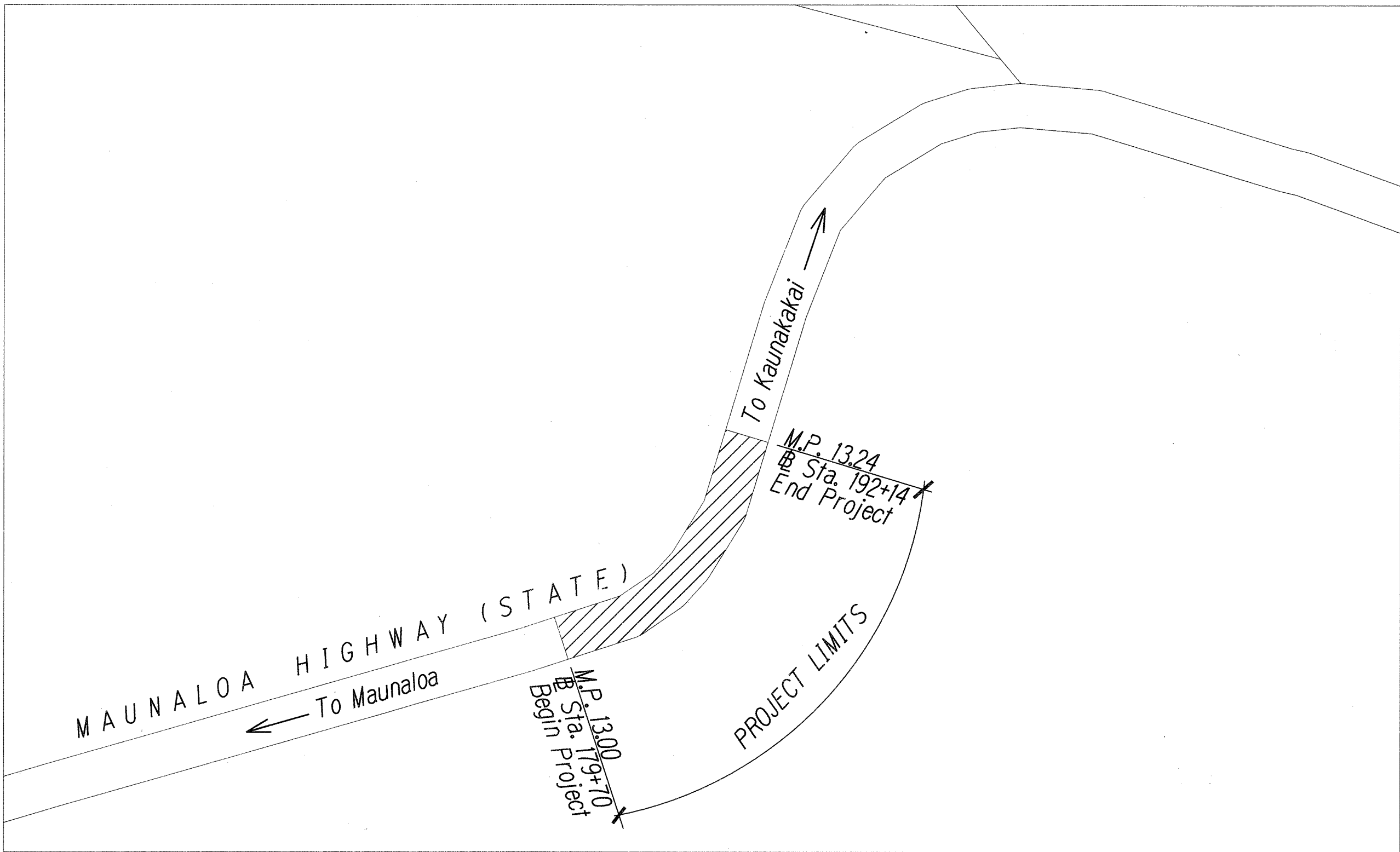
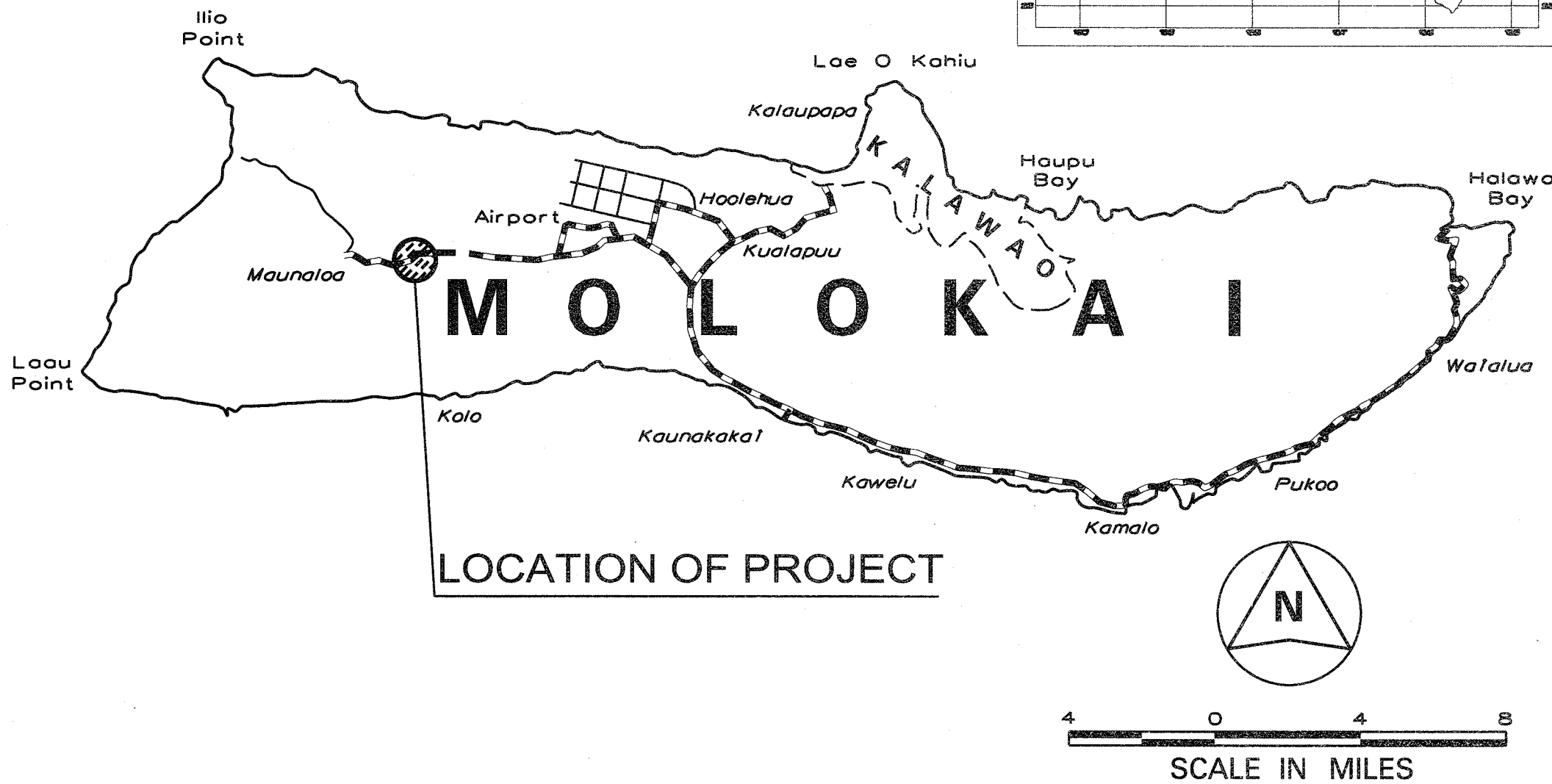
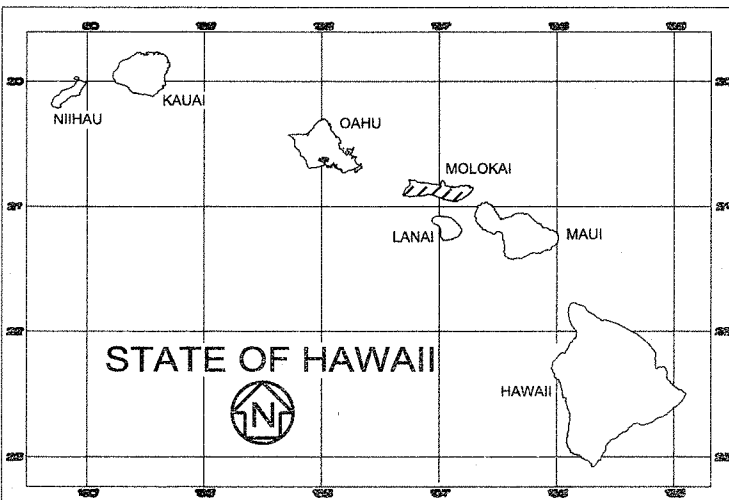
SLOPE STABILIZATION AT MILEPOST 13

HIGHWAY PROJECT NO. 460A-02-06

DISTRICT OF MOLOKAI

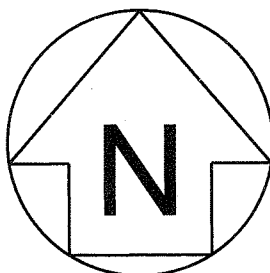
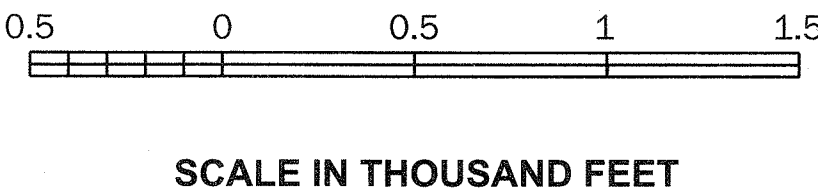
ISLAND OF MOLOKAI

FED. ROAD DIST. NO.	STATE	FED. AID PROJ. NO.	FISCAL YEAR	SHEET NO.	TOTAL SHEETS
HAWAII	HAW.	460A-02-06	2010	1	16



LOCATION PLAN

LENGTH OF PROJECT. 0.24 MILE



----- FEDERAL AID PROJECTS PREVIOUSLY CONSTRUCTED OR UNDER CONSTRUCTION

MILE POST 13 TO MILE POST 13.24

DESIGNED BY	DATE
DRAWN BY	DATE
CHECKED BY	DATE
NOTED BY	DATE

LYON ASSOCIATES, INC.

DESIGNED BY

HWY-ME

MANAGED BY

873-3535

PHONE

JAN 2010

DATE

CHANGES MADE DURING CONSTRUCTION HAVE BEEN INCORPORATED ON THESE PLANS EXCEPT CHANGES IN THE ORIGINAL THEORETICAL QUANTITIES. FOR ACTUAL QUANTITIES, REFER TO PROJECT LEDGER AND/OR COMPUTATION BOOK.

Derek M. Thiel 12/07/10
RESIDENT ENGINEER DATE

DEPARTMENT OF TRANSPORTATION
STATE OF HAWAII

APPROVED: *John H. Ho* 2/4/10
DIR. OF TRANSPORTATION DATE