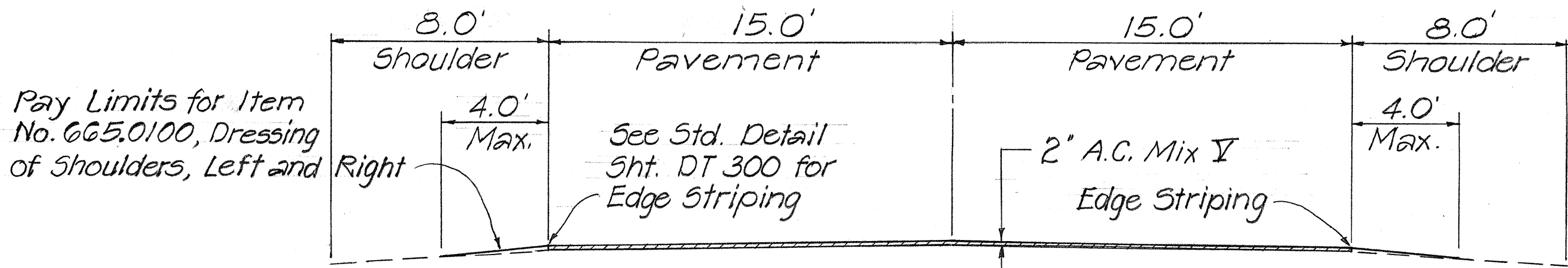


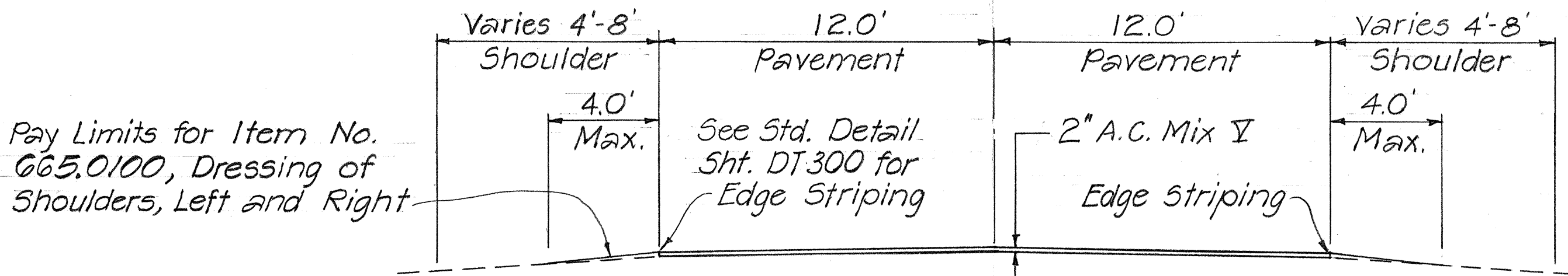
FED. ROAD DIST. NO.	STATE	FED. AID PROJ. NO.	FISCAL YEAR	SHEET NO.	TOTAL SHEETS
HAWAII	HAW.	RS-0460(1)	1978	2	23

GENERAL NOTES

1. Prior to filling or resurfacing, the existing surface shall be cleaned as described in Section 310 of The Standard Specification. Payment shall be considered incidental to A.C. Pavement Mix V, Item No. 401.0500.
2. All holes, cracks and large depressions shall be filled and compacted with A.C. Mix V prior to resurfacing. Payment shall be incidental to A.C. Pavement Mix V, item No. 401.0500.
3. In general, the A.C. pavement overlay thickness shall be 2 inches unless otherwise directed by the Engineer.
4. Smooth riding connections shall be constructed at the beginning and the end of the project, all connecting approaches, at extra widenings, and as directed by the Engineer.
5. The contractor's attention is directed to Sub-Section 104.04 of The Standard Specifications concerning maintenance of traffic.
6. All centerline monuments shall be adjusted as shown on the plan. Payment shall be considered incidental to A.C. Pavement Mix V, item No. 401.0500.
7. The shoulder shall be shaped by cutting or filling, grading, watering and rolling as directed by the Engineer, generally as shown on the Typical Section. Dressing of the shoulder areas shall be with Aggregate Subbase or any other material approved by the Engineer and in accordance with contract item No. 665.0100.
8. All new sign posts shall be 2"x2" galv. square tube posts incidental to item Nos. 621.5010 and 621.5110, unless specified as breakaway type sign post.
9. Existing signs and posts, markers and posts shall be stockpiled at a site within the project limits determined by the Engineer.
10. Replacement of signs includes removal of existing sign with posts, stockpiling, and installation of new sign with posts unless otherwise specified.
11. Installation of signs includes installation of new sign with posts unless otherwise specified.
12. For centerline stripe and raised pavement markers see sheet 9 and standard detail sheet DT 300.
13. Adjustment of manhole and water Valve shall be adjusted as shown on the plan. Payment shall be considered incidental to A.C. pavement mix V, Item No. 401.0500.
14. Removal of signs and reflector markers only shall be considered incidental to Items 621.5010 and 621.5110.
15. Removal of concrete guide posts shall be considered incidental to dressing shoulders, Item 665.0100.
16. Concrete posts between extra widening Sta. 21+50 to Sta. 26+50 shall be repainted after resurfacing and red line mark shall be adjusted in accordance with thickness of A.C. pavement. Payment shall be considered incidental to pavement striping, Item No. 629.1010.
17. Paving, striping, raised pavement markers, dressing shoulders and adjusting survey monuments, end at Sta. 350+00. Reflector markers, regulatory signs, warning signs, and route markers, end at Sta. 370+30.

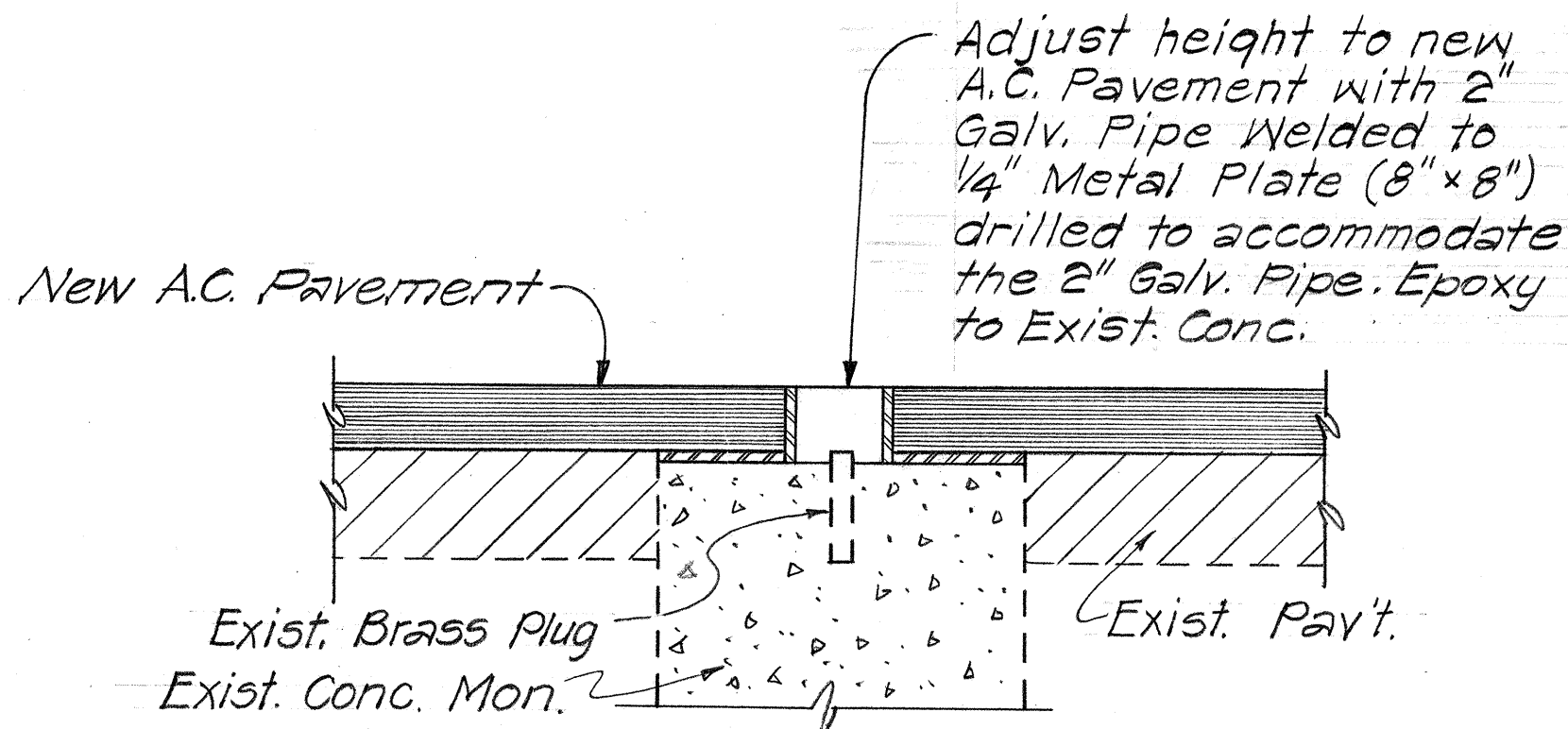


TYPICAL SECTION
KAUNAKAKAI PLACE
Scale: 1/4"=1'-0"

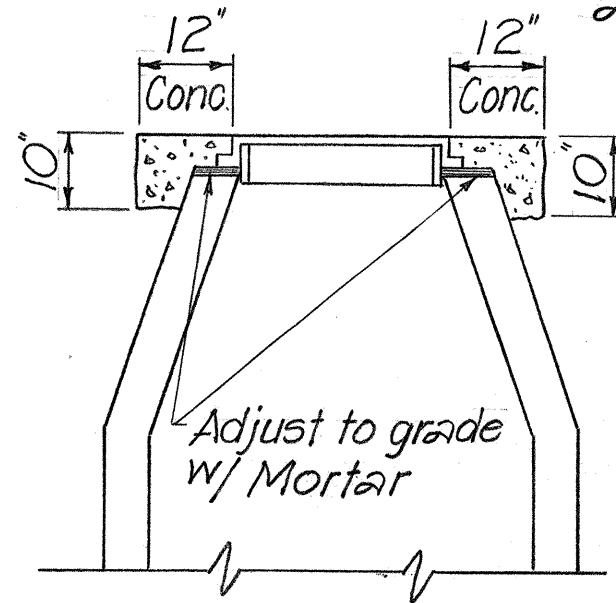


TYPICAL SECTION
MAUNALOA HIGHWAY
Scale: 1/4"=1'-0"

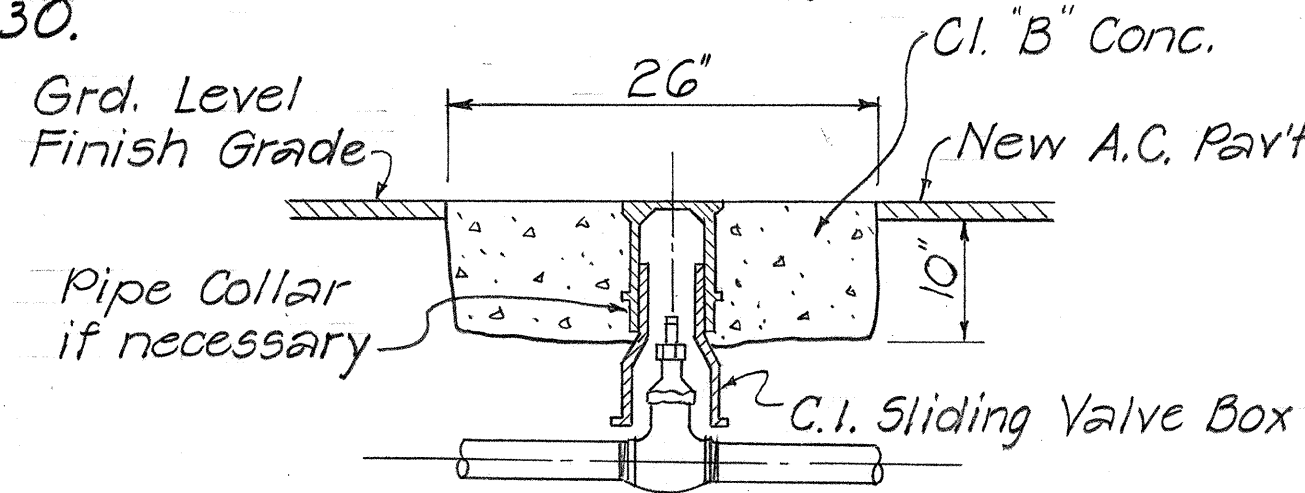
STA. 21+50 TO STA. 26+50 = 40' WIDE (EXTRA WIDENING)
STA. 160+80 TO 216+80 = 4" A.C. PAVEMENT
STA. 294+70 TO 350+00 = 4" A.C. PAVEMENT



ADJUSTED MONUMENT
Scale: 3"=1'-0"



ADJUSTED MANHOLE
Scale: 1/2"=1'-0"



ADJUSTED WATER VALVE BOX
Not to Scale

STATE OF HAWAII	
DEPARTMENT OF TRANSPORTATION	
HIGHWAYS DIVISION	
TYPICAL DETAILS	
RESURFACING MAUNALOA HWY.	
KAUNAKAKAI WHARF TOWARDS	
MAUNALOA VILLAGE	
PROJ. NO RS-0460 (1)	
SCALE : AS SHOWN	
NOV. 1977	
SHEET No. 1 OF 1 SHEETS	