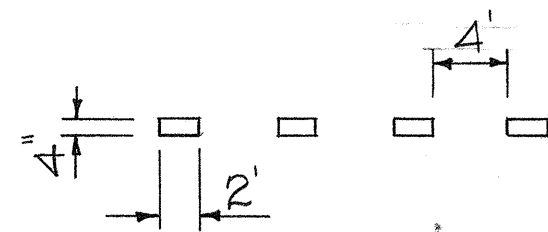
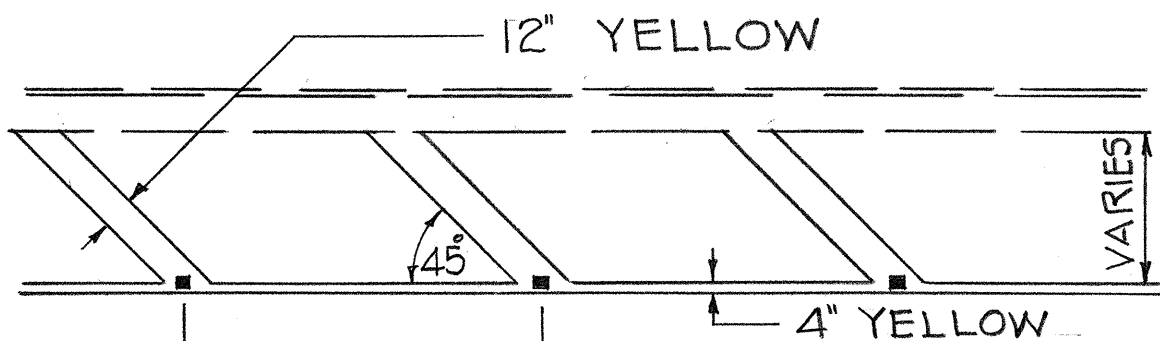


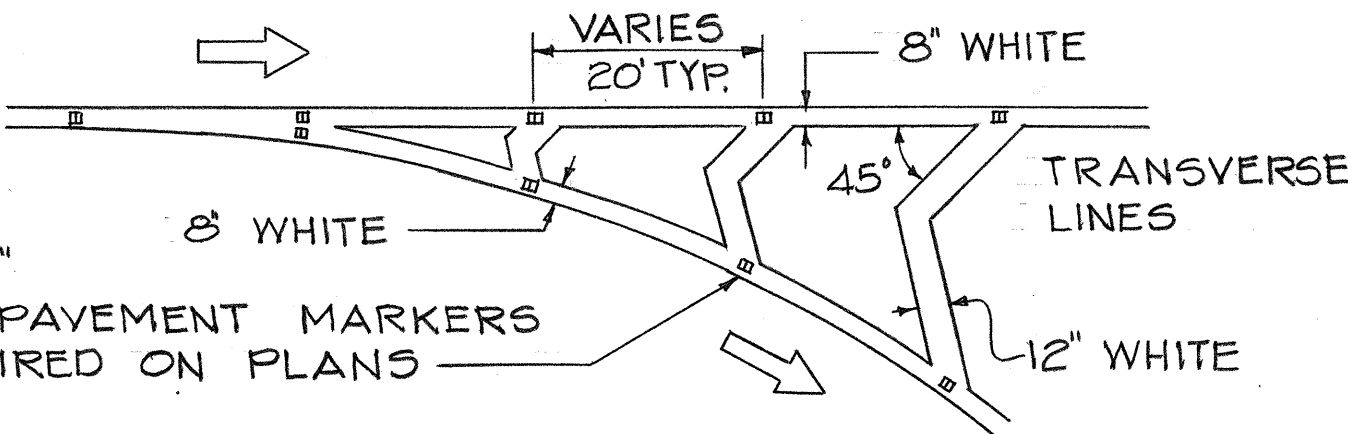
FED. ROAD DIST. NO.	STATE	FED. AID PROJ. NO.	FISCAL YEAR	SHEET NO.	TOTAL SHEETS
HAWAII	HAW.	RS-0460(1)	1978	8	23



4" GUIDE LINE
(WHITE OR YELLOW AS INDICATED ON PLAN)
NOT TO SCALE



TYPE "H" MARKERS W/
REFLECTIVE SURFACE
FACING ONCOMING TRAFFIC
40' TYP.
DIRECTION OF TRAFFIC
TRANSVERSE LANE MARKING
NOT TO SCALE



TYPE "C"
RAISED PAVEMENT MARKERS
AS REQUIRED ON PLANS
VARIES 20' TYP.
8" WHITE
45°
12" WHITE
TRANSVERSE LINES

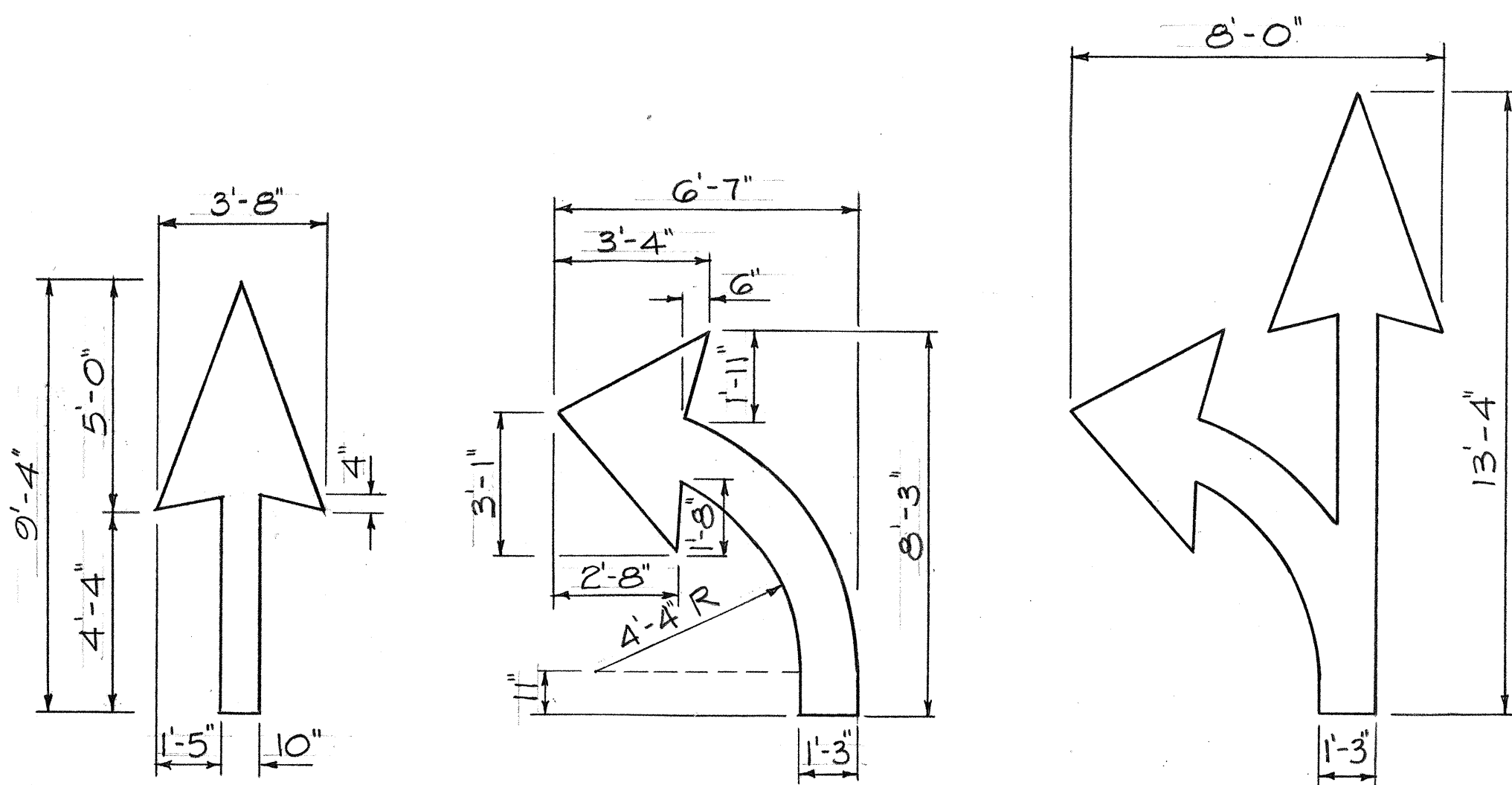
CHANNELIZING ISLAND
NOT TO SCALE

GENERAL NOTES - PAVEMENT MARKINGS

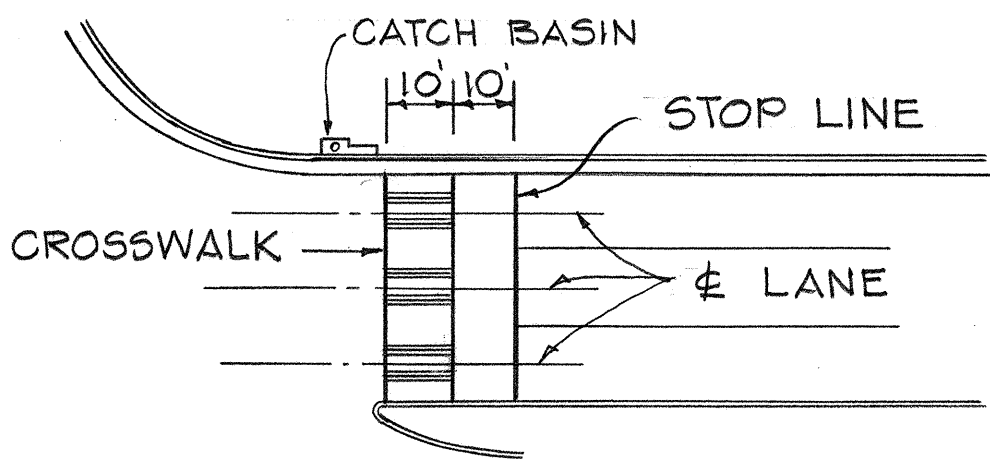
- Pavement Markings shall conform to the "Manual on Uniform Traffic Control Devices for Streets and Highways," 1971, and as shown on the plans.
- Layout of pavement markings and striping shall be done by the Contractor. Contractor shall check layout of markers and striping with the Engineer prior to performing work.
- For additional pavement marking details see plan sht. #DT 300.

STATE OF HAWAII
DEPARTMENT OF TRANSPORTATION
HIGHWAYS DIVISION

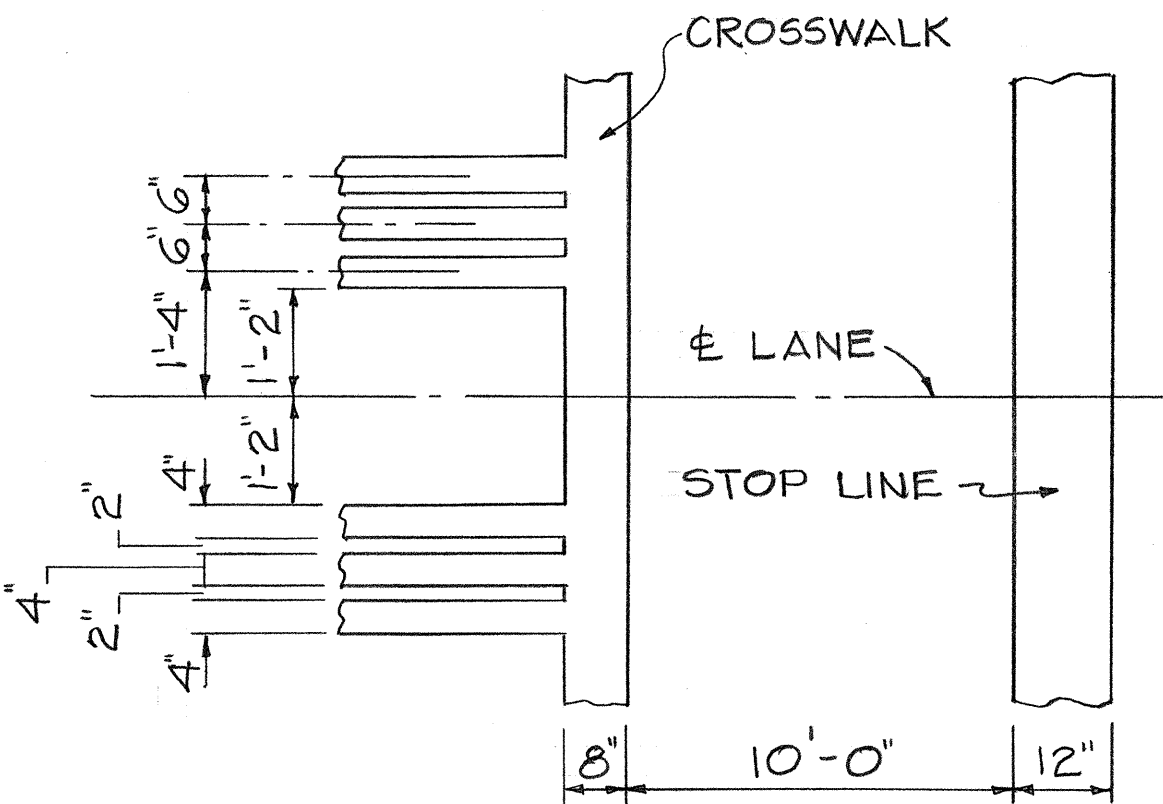
TYPICAL DETAILS OF
PAVEMENT MARKINGS
RESURFACING MAUNALOA HWY.
PROJ. NO RS-0460 (1)
SCALE AS SHOWN
DEC. 1977
SHEET NO. 7 OF 8 SHEETS



PAVEMENT ARROWS
NOT TO SCALE



NOTE: SET ALL CROSSWALKS AWAY FROM CATCH BASINS



CROSSWALK & STOP LINE
NOT TO SCALE

ORIGINAL PLAN	DATE
DESIGNED BY	
NOTED BY	
CHECKED BY	
QUANTITIES BY	
DESIGNED BY	
NOTED BY	
CHECKED BY	
QUANTITIES BY	