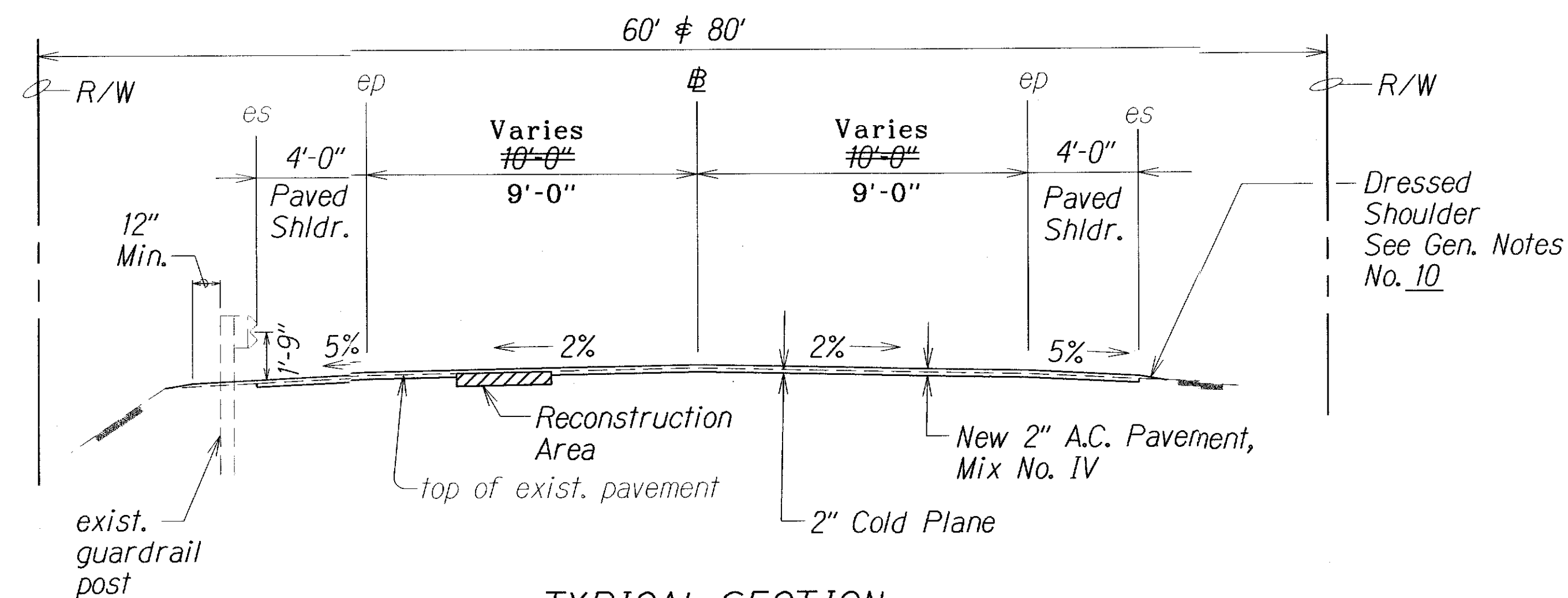
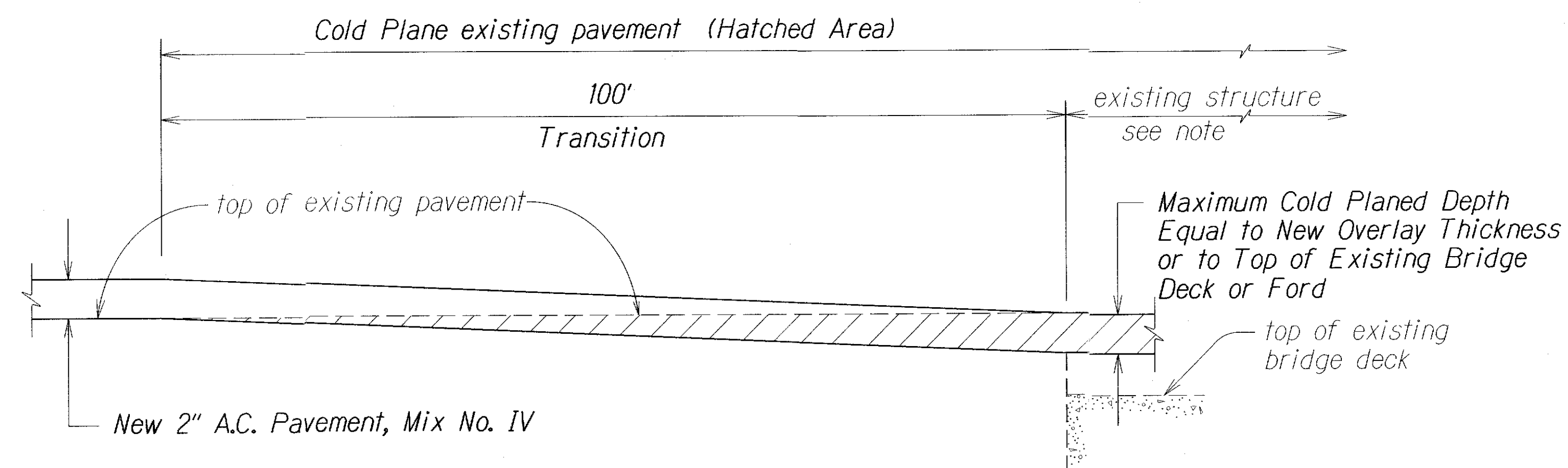


FED. ROAD DIST. NO.	STATE	PROJ. NO.	FISCAL YEAR	SHEET NO.	TOTAL SHEETS
HAWAII	HAW.	450AB-01-13M	2016	7	32

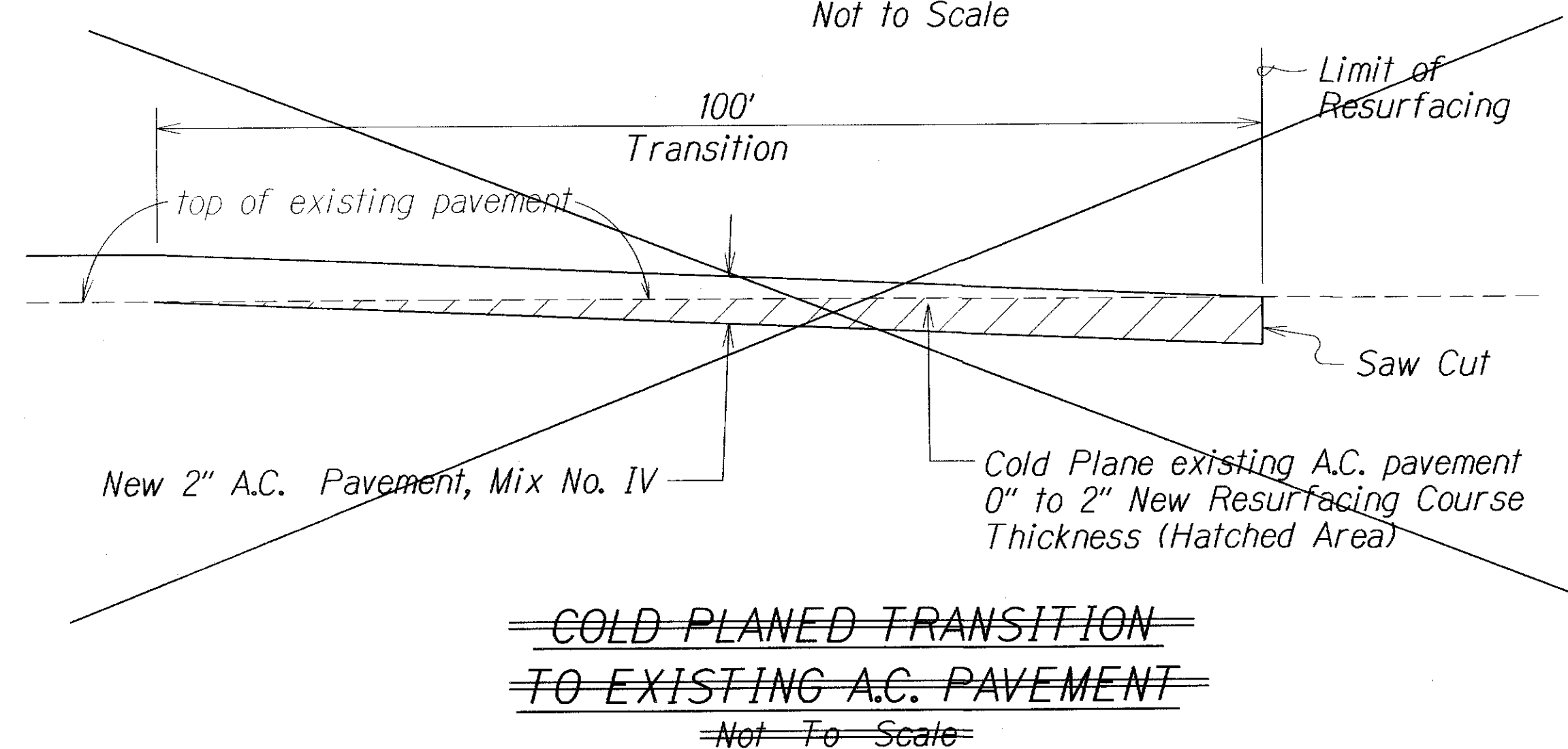


TYPICAL SECTION
44+00 to 26+20
Scale: 1/4" = 1'-0"

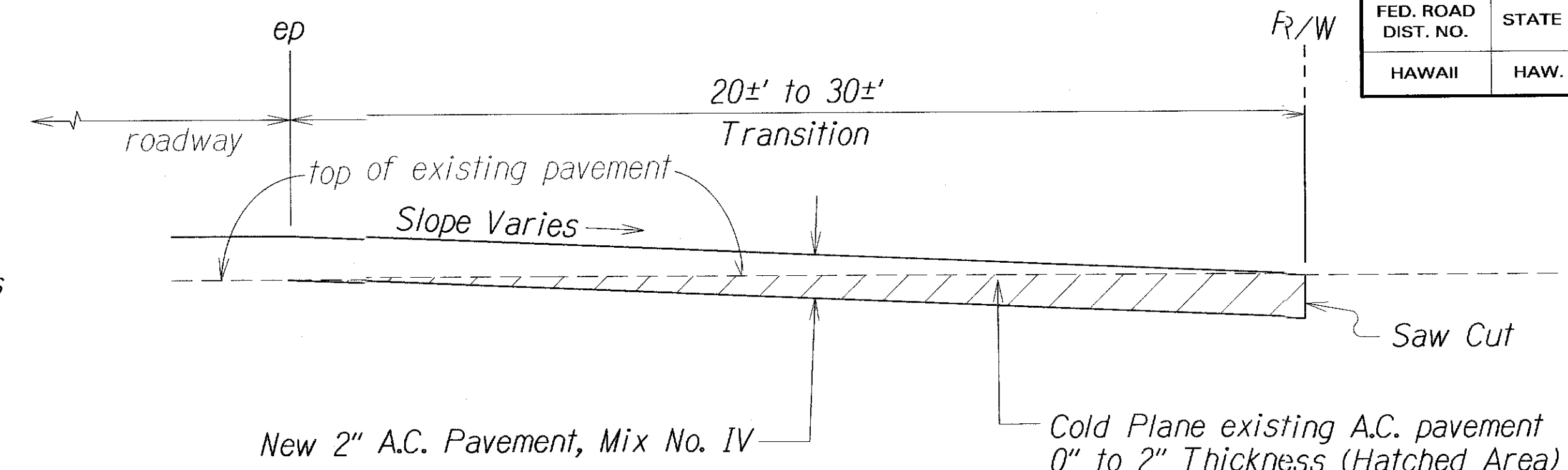


Note: In cold planing the pavement over the structure, the Contractor shall exercise care not to damage any portion of the structure, especially the slab, joints, drainage pipes or reinforcement. Any damage to the structure during the cold planing operations shall be repaired by the Contractor at his expense. Repair work shall be directed by the Engineer. The Contractor shall verify the thickness of the pavement by taking several measurements throughout the structure.

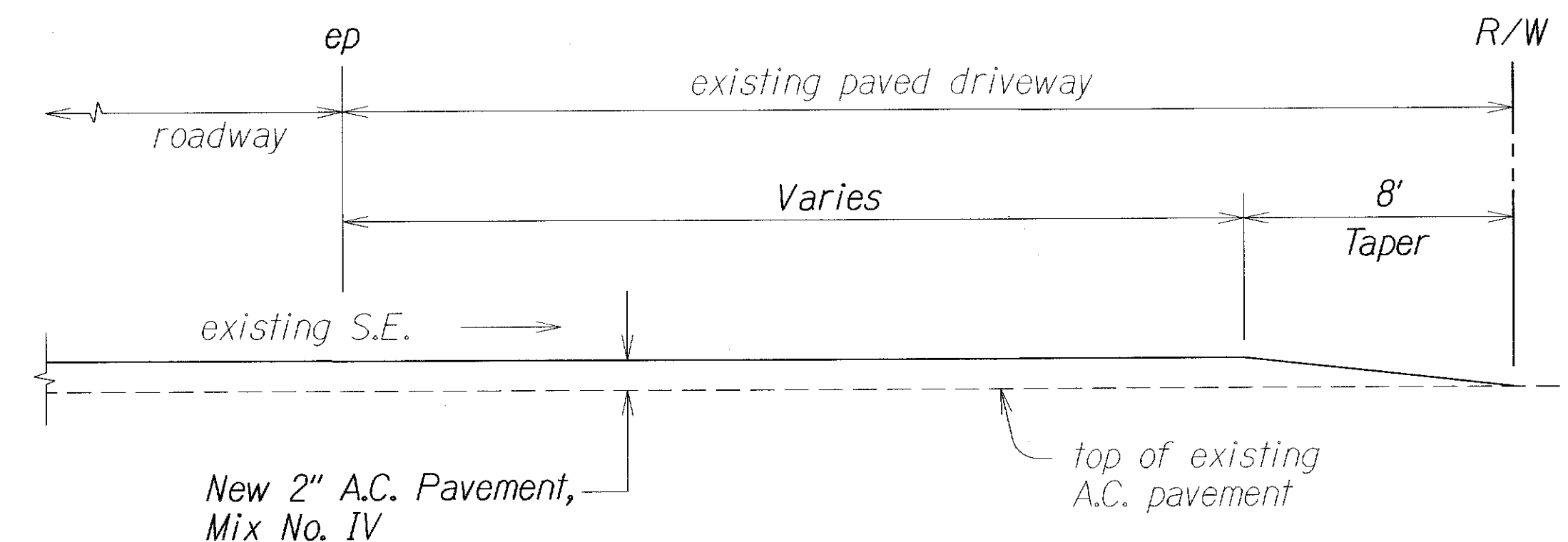
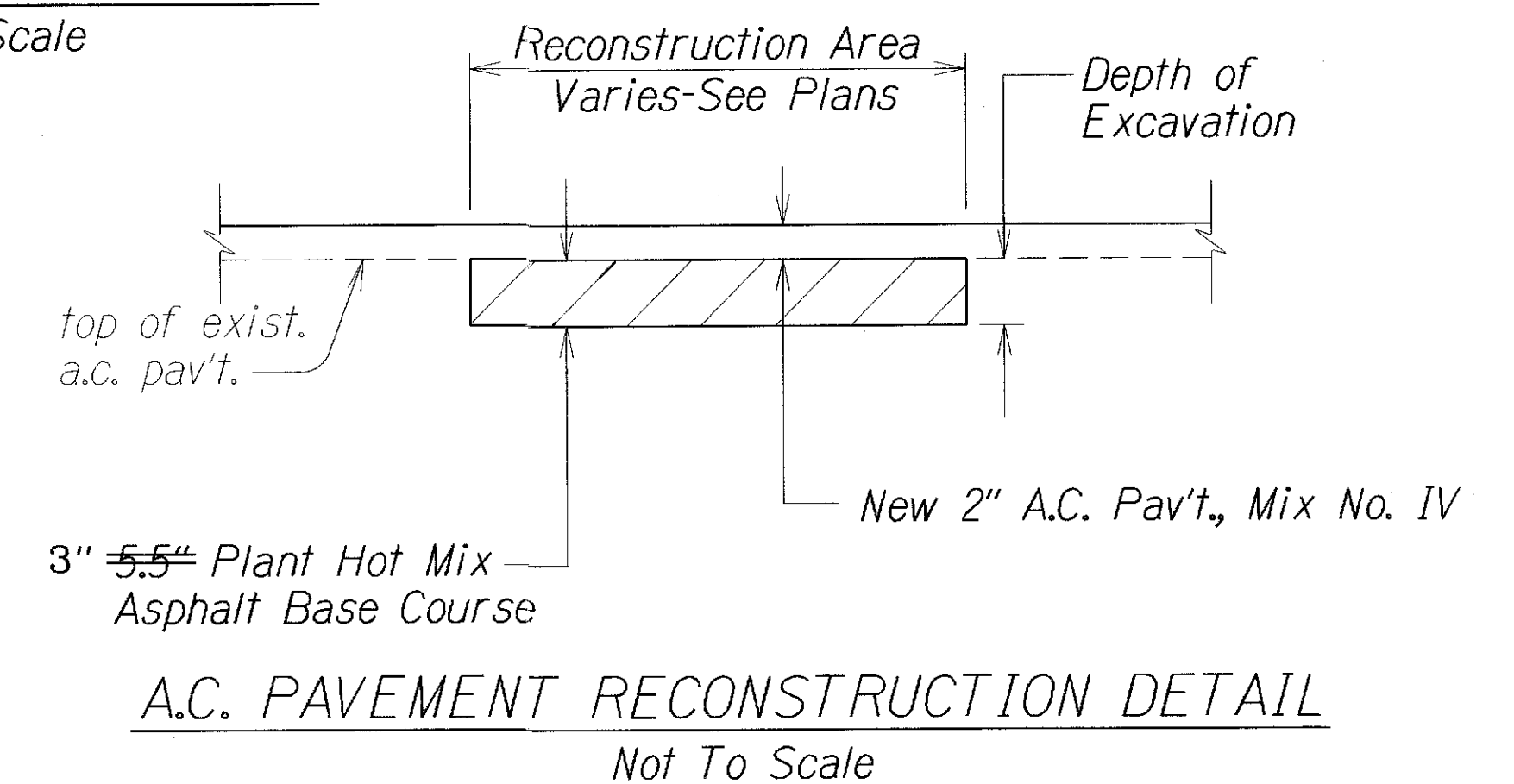
COLD PLANED TRANSITION AND RESURFACING
OVER EXISTING STRUCTURE
Not to Scale



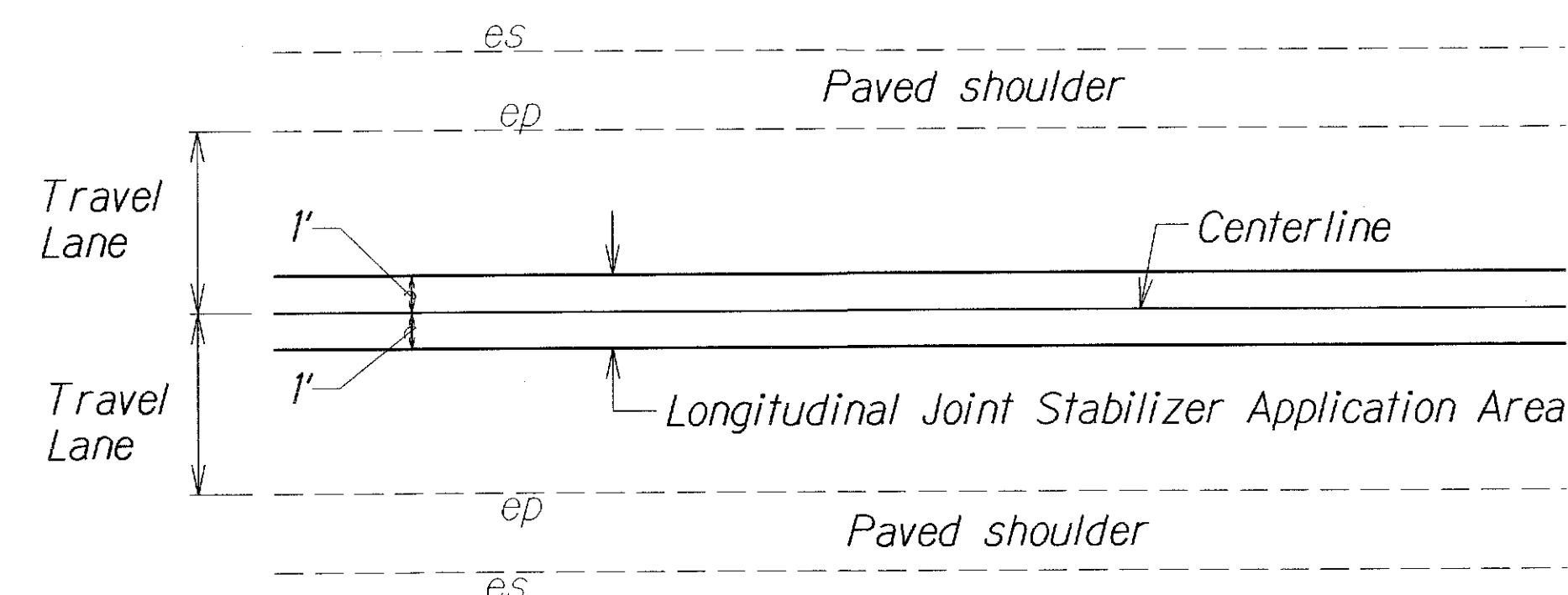
~~COLD PLANED TRANSITION
TO EXISTING A.C. PAVEMENT
Not To Scale~~



PAVED SIDE ROAD DETAIL
Not To Scale



PAVED DRIVEWAY DETAIL
Not To Scale



TYPICAL SECTION FOR
LONGITUDINAL JOINT STABILIZER
Not To Scale

LEGEND FOR AS-BUILT POSTINGS	
	Squiggly line for as-built deletion
	Double line for as-built deletion
	Text for as-built posting

STATE OF HAWAII
DEPARTMENT OF TRANSPORTATION
HIGHWAYS DIVISION

TYPICAL SECTIONS & DETAILS
KAMEHAMEHA V HIGHWAY RESURFACING
Kapuokoolau to Kamalo
Project No. 450AB-01-13M
Scale: As Shown
Date: February, 2016

SHEET No. 1 OF 1 SHEETS

SURVEY PLOTTED BY	DATE
DRAWN BY	2016
DESIGNED BY	
CHECKED BY	
ORIGINAL PLAN	
NOTE BOOK	
REVISIONS	
CHECKED BY	