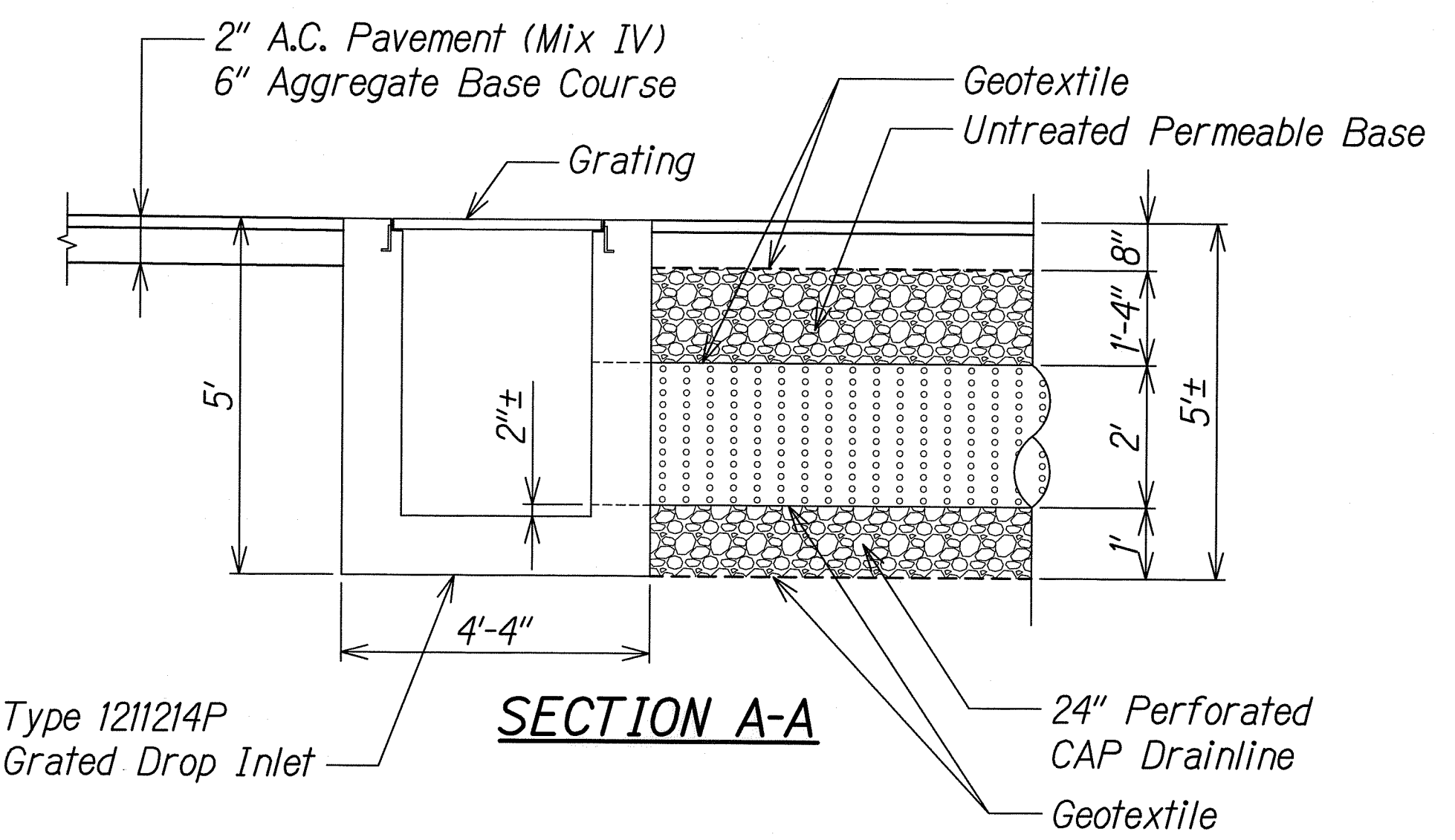
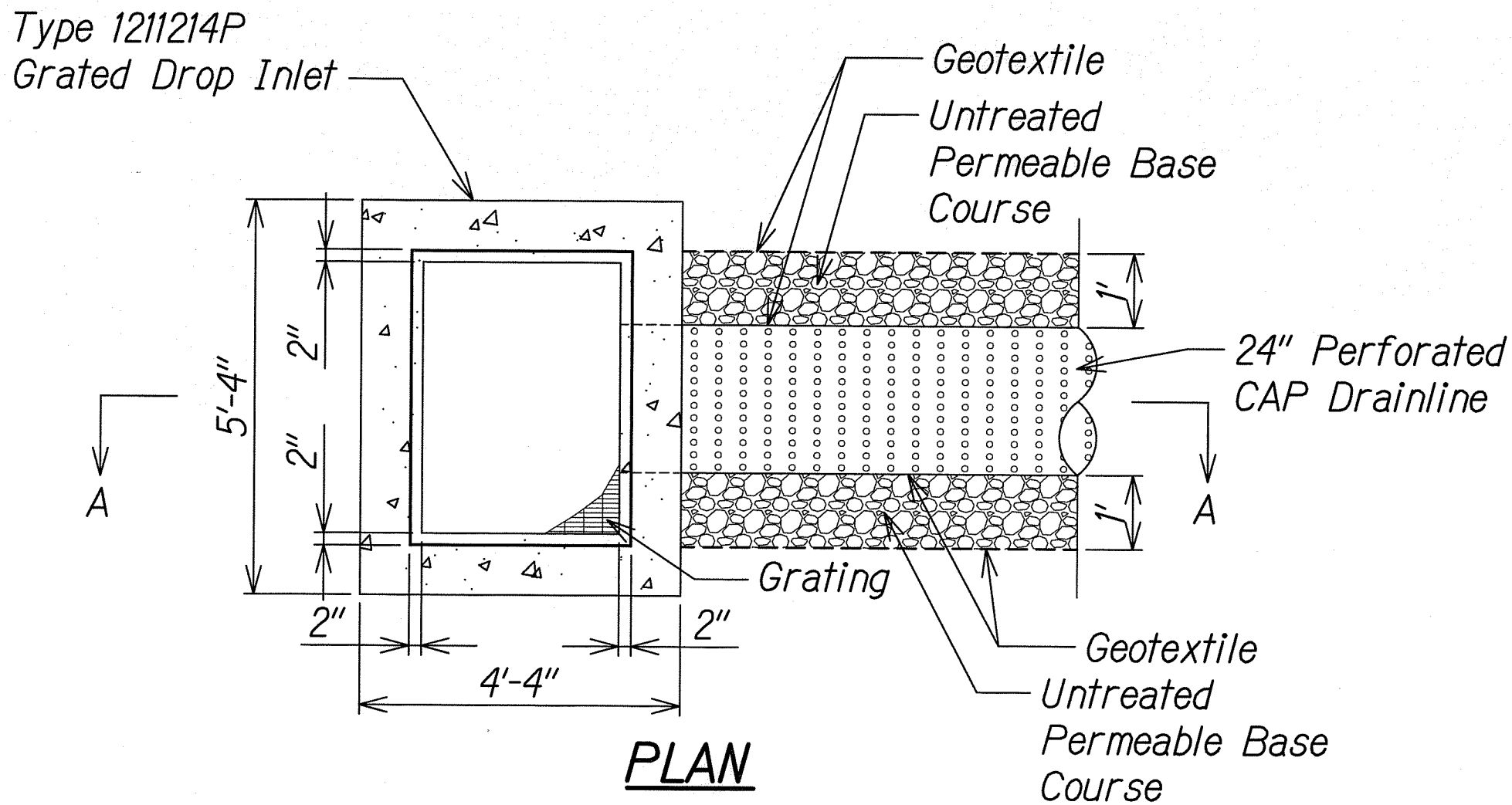
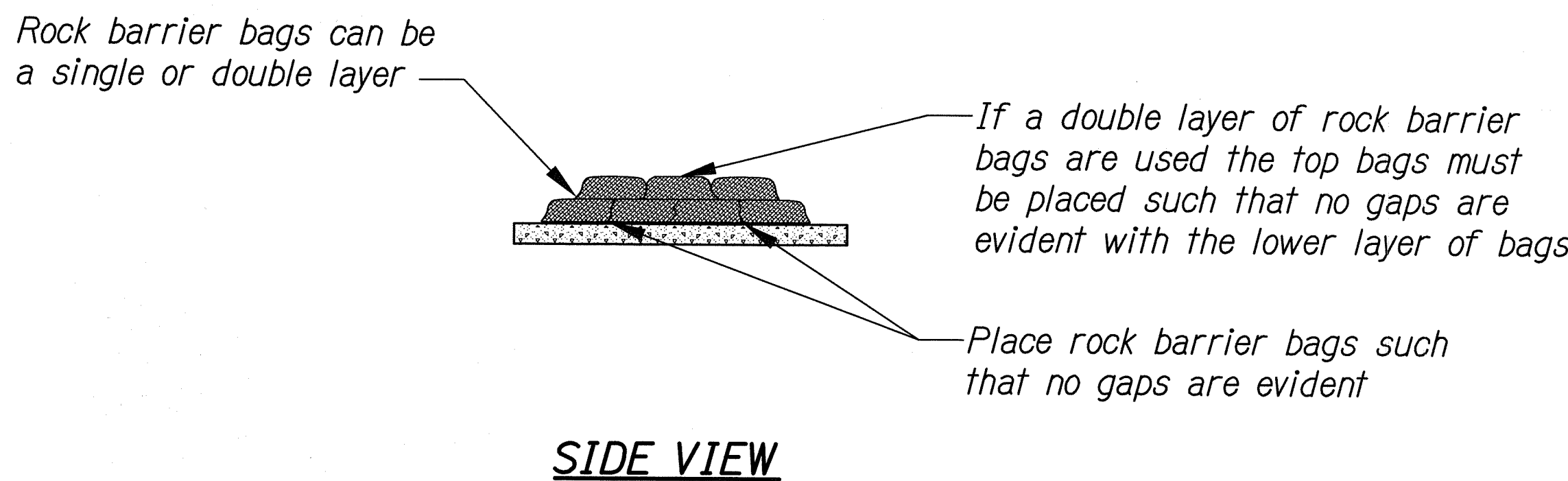
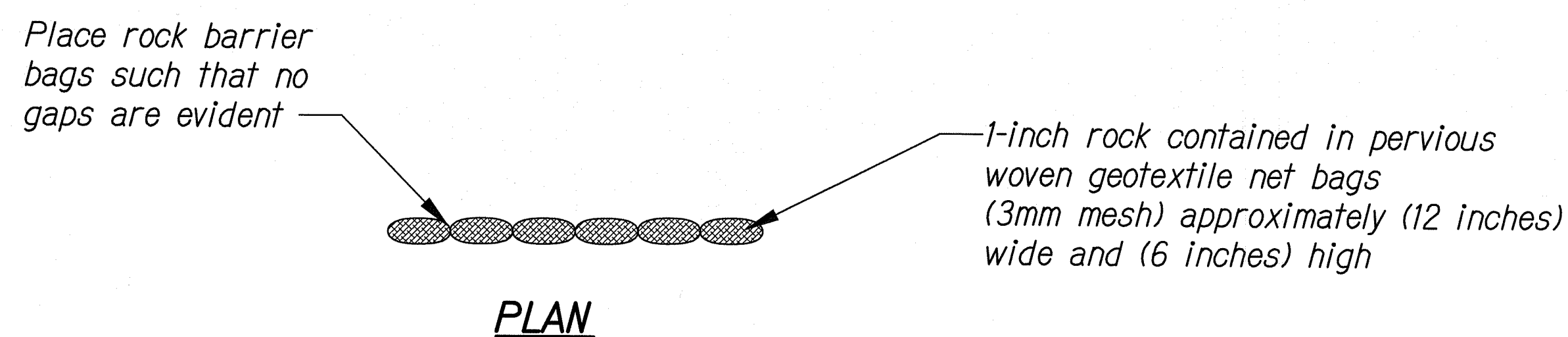


FED. ROAD DIST. NO.	STATE	PROJ. NO.	FISCAL YEAR	SHEET NO.	TOTAL SHEETS
HAWAII	HAW.	450A-01-11	2012	15	15



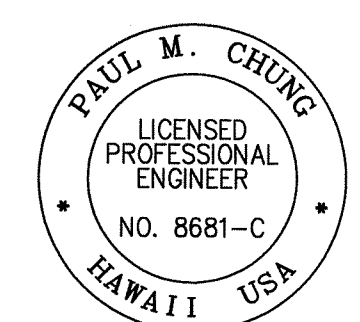
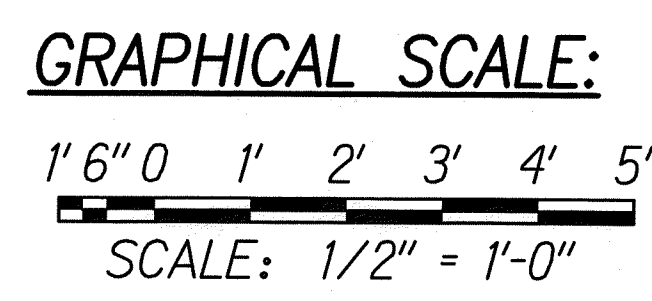
SUBSURFACE DRAIN DETAIL
Scale: 1/2" = 1'-0"



GEOTEXTILE ROCKBAG PROTECTION
N.T.S.

NOTE:
In the event of above normal rainfall, contractor shall remove inlet protection and replace after event has passed. See Water Pollution and Erosion Control Notes on Plan Sheet No. 6.

ORIGINAL PLAN	DATE
SURVEY PLOTTED BY	
DRAWN BY	
DESIGNED BY	
QUANTITIES BY	
CHECKED BY	
NO.	



THIS WORK WAS PREPARED BY ME OR UNDER MY SUPERVISION

SIGNATURE

EXPIRATION DATE OF THE LICENSE

04/30/14

STATE OF HAWAII
DEPARTMENT OF TRANSPORTATION
HIGHWAYS DIVISION

DETAILS

KAMEHAMEHA V HIGHWAY DRAINAGE IMPROVEMENTS
Vicinity of Mohala Street to Vicinity of Oki Place
Project No. 450A-01-11

Scale: As Noted Date: May 9, 2012

SHEET No. 1 OF 1 SHEETS