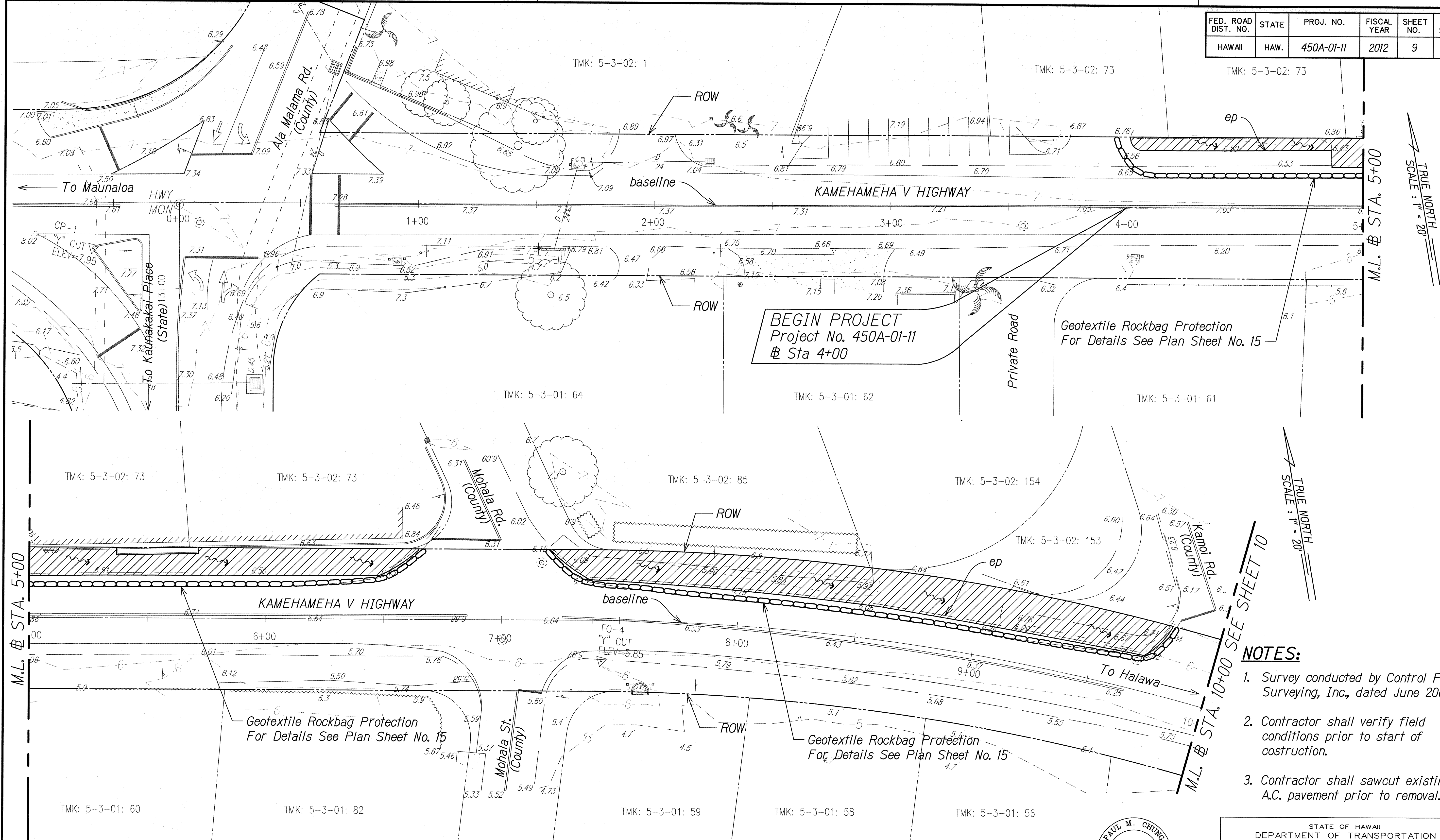
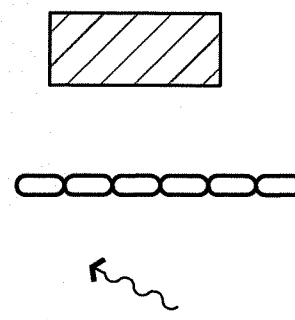


FED. ROAD DIST. NO.	STATE	PROJ. NO.	FISCAL YEAR	SHEET NO.	TOTAL SHEETS
HAWAII	HAW.	450A-01-11	2012	9	15



DATE	BY
DESIGNED BY	CHECKED BY
NOTED BY	

LEGEND:

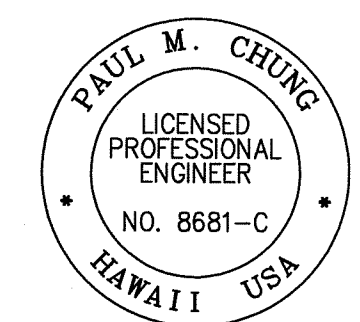


GRAPHICAL SCALE:
20' 10' 0 20' 40'
SCALE: 1" = 20'

Demolition and Erosion Control Plan

NOTES:

1. Survey conducted by Control Point Surveying, Inc., dated June 2003.
2. Contractor shall verify field conditions prior to start of construction.
3. Contractor shall sawcut existing A.C. pavement prior to removal.

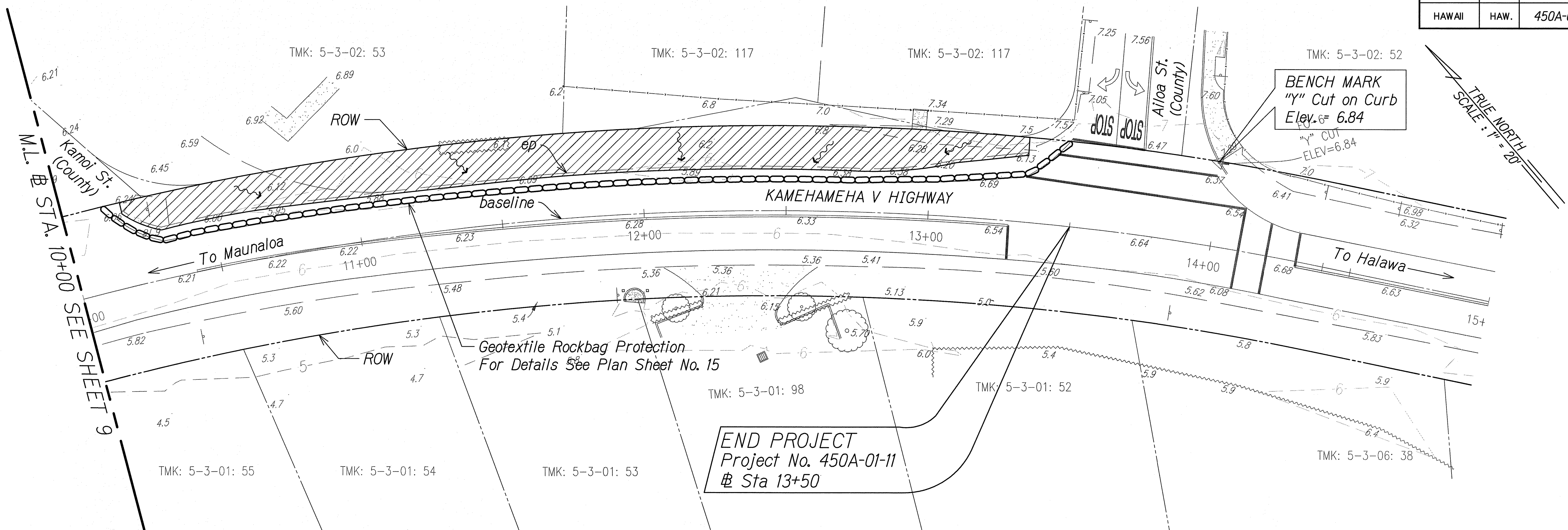


THIS WORK WAS PREPARED BY ME OR UNDER MY SUPERVISION

SIGNATURE: *[Signature]* 04/30/14
EXPIRATION DATE OF THE LICENSE

STATE OF HAWAII
DEPARTMENT OF TRANSPORTATION
HIGHWAYS DIVISION
DEMOLITION AND EROSION CONTROL PLAN
KAMEHAMEHA V HIGHWAY DRAINAGE IMPROVEMENTS
Vicinity of Mohala Street to Vicinity of Oki Place
Project No. 450A-01-11
Scale: 1" = 20' Date: May 9, 2012
SHEET No. 1 OF 2 SHEETS

FED. ROAD DIST. NO.	STATE	PROJ. NO.	FISCAL YEAR	SHEET NO.	TOTAL SHEETS
HAWAII	HAW.	450A-01-11	2012	10	15



Demolition and Erosion Control Plan

ORIGINAL PLAN	SURVEY PLOTTED BY	DATE
NOTE BOOK	DRAWN BY	
No.	DESIGNED BY	
	QUANTITIES BY	
	CHECKED BY	

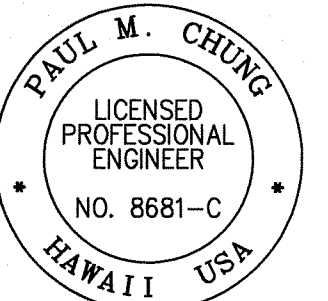
GRAPHICAL SCALE:
20' 10' 0 20' 40'
SCALE: 1" = 20'

LEGEND:

- Approx. Limits Of Shoulder Removal And Reconstruction (Exact Limits To Be Determined By Engineer In Field)
- Geotextile Rockbag Protection
- Direction of Flow

NOTES:

- Survey conducted by Control Point Surveying, Inc., dated June 2003.
- Contractor shall verify field conditions prior to start of construction.
- Contractor shall sawcut existing A.C. pavement prior to removal.



THIS WORK WAS PREPARED BY ME OR UNDER MY SUPERVISION

SIGNATURE 04/30/14
EXPIRATION DATE OF THE LICENSE

STATE OF HAWAII
DEPARTMENT OF TRANSPORTATION
HIGHWAYS DIVISION

DEMOLITION AND EROSION CONTROL PLAN

KAMEHAMEHA V HIGHWAY DRAINAGE IMPROVEMENTS
Vicinity of Mohala Street to Vicinity of Oki Place
Project No. 450A-01-11

Scale: 1" = 20' Date: May 9, 2012

SHEET No. 2 OF 2 SHEETS