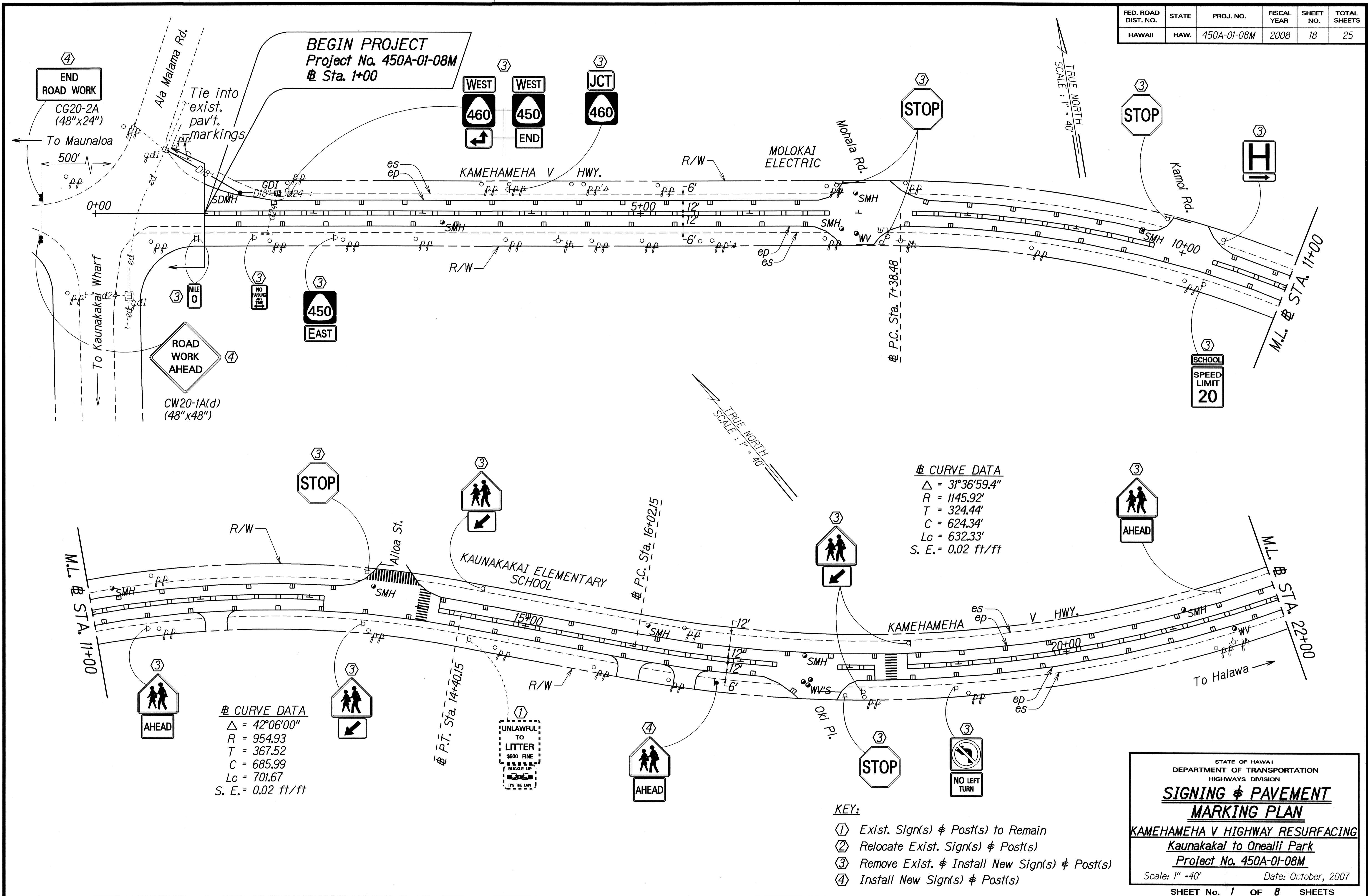


FED. ROAD DIST. NO.	STATE	PROJ. NO.	FISCAL YEAR	SHEET NO.	TOTAL SHEETS
HAWAII	HAW.	450A-01-08M	2008	18	25



# CURVE DATA  
 $\Delta = 31^{\circ}36'59.4''$   
 $R = 1145.92'$   
 $T = 324.44'$   
 $C = 624.34'$   
 $Lc = 632.33'$   
 $S. E. = 0.02 \text{ ft/ft}$

# CURVE DATA  
 $\Delta = 42^{\circ}06'00''$   
 $R = 954.93$   
 $T = 367.52$   
 $C = 685.99$   
 $Lc = 701.67$   
 $S. E. = 0.02 \text{ ft/ft}$

- KEY:
- ① Exist. Sign(s) & Post(s) to Remain
  - ② Relocate Exist. Sign(s) & Post(s)
  - ③ Remove Exist. & Install New Sign(s) & Post(s)
  - ④ Install New Sign(s) & Post(s)

STATE OF HAWAII  
DEPARTMENT OF TRANSPORTATION  
HIGHWAYS DIVISION

**SIGNING & PAVEMENT MARKING PLAN**

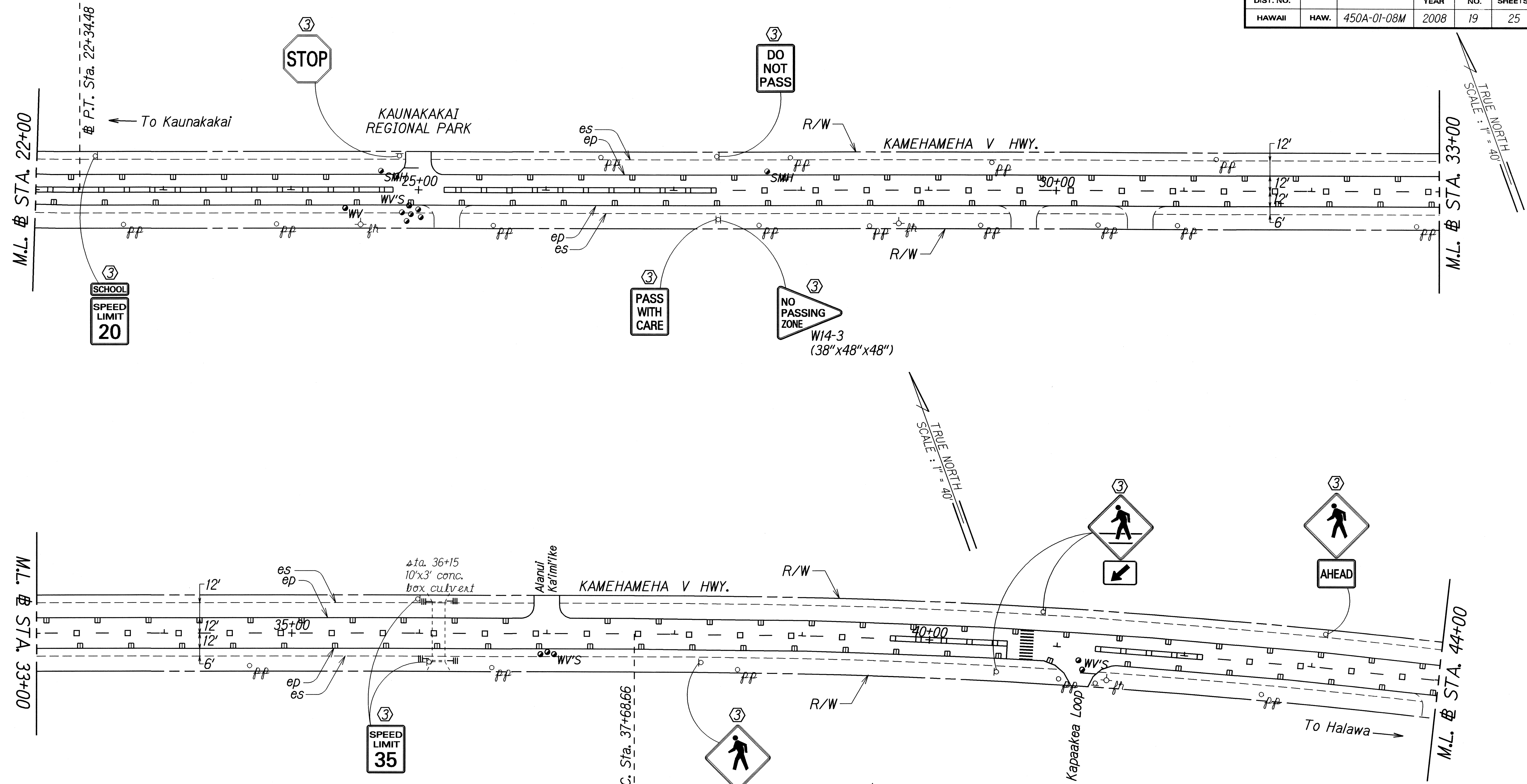
**KAMEHAMEHA V HIGHWAY RESURFACING  
Kaunakakai to Onealii Park  
Project No. 450A-01-08M**

Scale: 1" = 40' Date: October, 2007

SHEET No. 1 OF 8 SHEETS

SURVEY PLOTTED BY: \_\_\_\_\_ DATE: 10/20/07  
DRAWN BY: JG  
TRACED BY: C. Cassano, B. Basso  
NOTE BOOK: \_\_\_\_\_  
QUANTITIES BY: \_\_\_\_\_  
CHECKED BY: \_\_\_\_\_  
ORIGINAL PLAN: \_\_\_\_\_  
DATE: \_\_\_\_\_  
NO. \_\_\_\_\_

FED. ROAD DIST. NO.	STATE	PROJ. NO.	FISCAL YEAR	SHEET NO.	TOTAL SHEETS
HAWAII	HAW.	450A-01-08M	2008	19	25



# CURVE DATA

$\Delta$	= 7°24'00"
R	= 5729.58'
T	= 370.52'
C	= 739.49'
Lc	= 740.00'
S. E.	= 0.02 ft/ft

- KEY:
- ① Exist. Sign(s) & Post(s) to Remain
  - ② Relocate Exist. Sign(s) & Post(s)
  - ③ Remove Exist. & Install New Sign(s) & Post(s)
  - ④ Install New Sign(s) & Post(s)

SURVEY PLOTTED BY	DATE
DRAWN BY	
TRACED BY	
NOTE BOOK	
QUANTITIES BY	
CHECKED BY	

STATE OF HAWAII  
DEPARTMENT OF TRANSPORTATION  
HIGHWAYS DIVISION

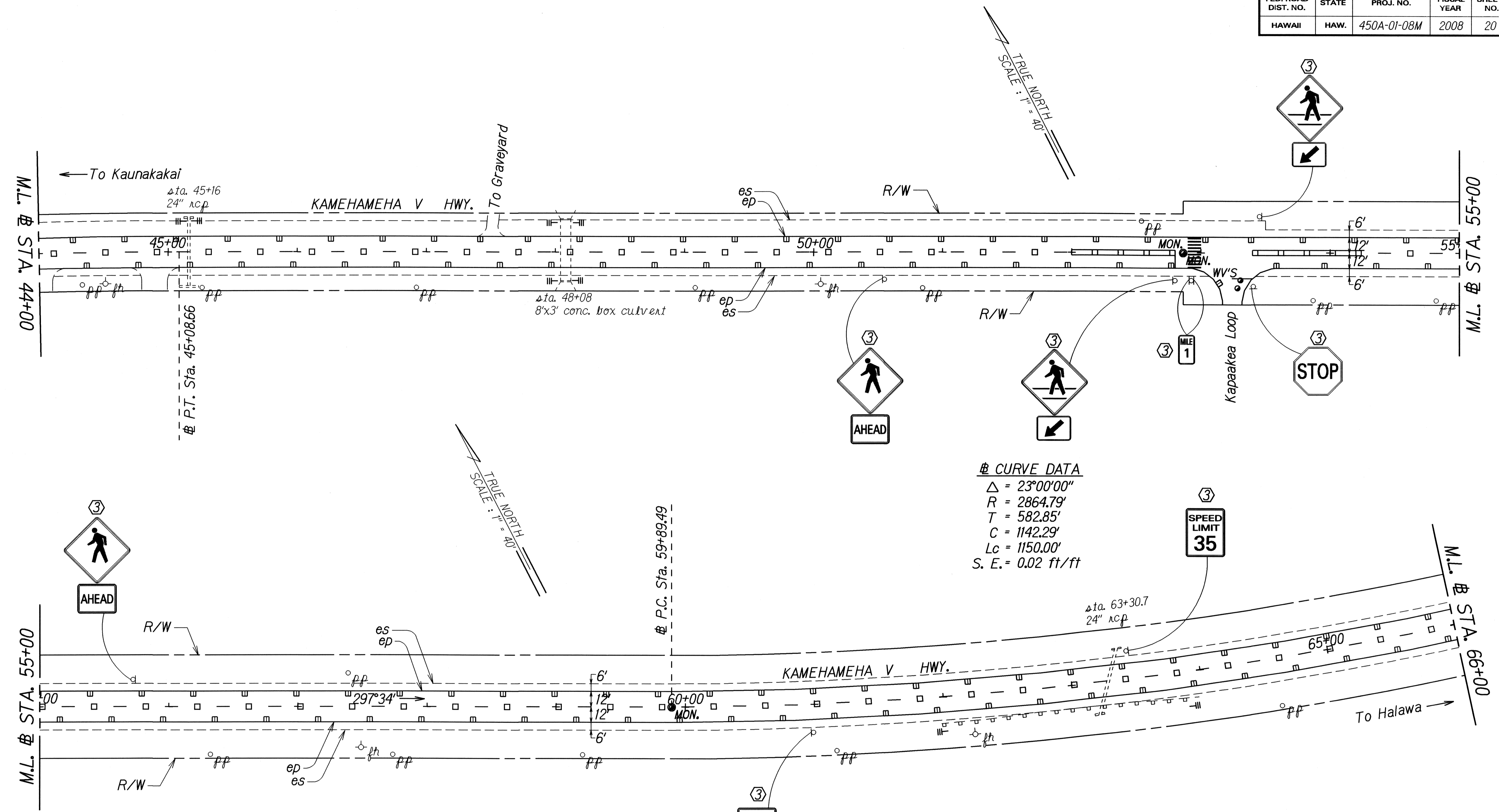
**SIGNING & PAVEMENT MARKING PLAN**

**KAMEHAMEHA V HIGHWAY RESURFACING**  
Kaunakakai to Oneali Park  
Project No. 450A-01-08M

Scale: 1" = 40' Date: October, 2007

SHEET No. 2 OF 8 SHEETS

FED. ROAD DIST. NO.	STATE	PROJ. NO.	FISCAL YEAR	SHEET NO.	TOTAL SHEETS
HAWAII	HAW.	450A-01-08M	2008	20	25



SURVEY PLOTTED BY	DATE
DRAWN BY	
TRACED BY	
NOTE BOOK	
QUANTITIES BY	
CHECKED BY	

- KEY:**
- ① Exist. Sign(s) & Post(s) to Remain
  - ② Relocate Exist. Sign(s) & Post(s)
  - ③ Remove Exist. & Install New Sign(s) & Post(s)
  - ④ Install New Sign(s) & Post(s)

STATE OF HAWAII  
DEPARTMENT OF TRANSPORTATION  
HIGHWAYS DIVISION

**SIGNING & PAVEMENT  
MARKING PLAN**

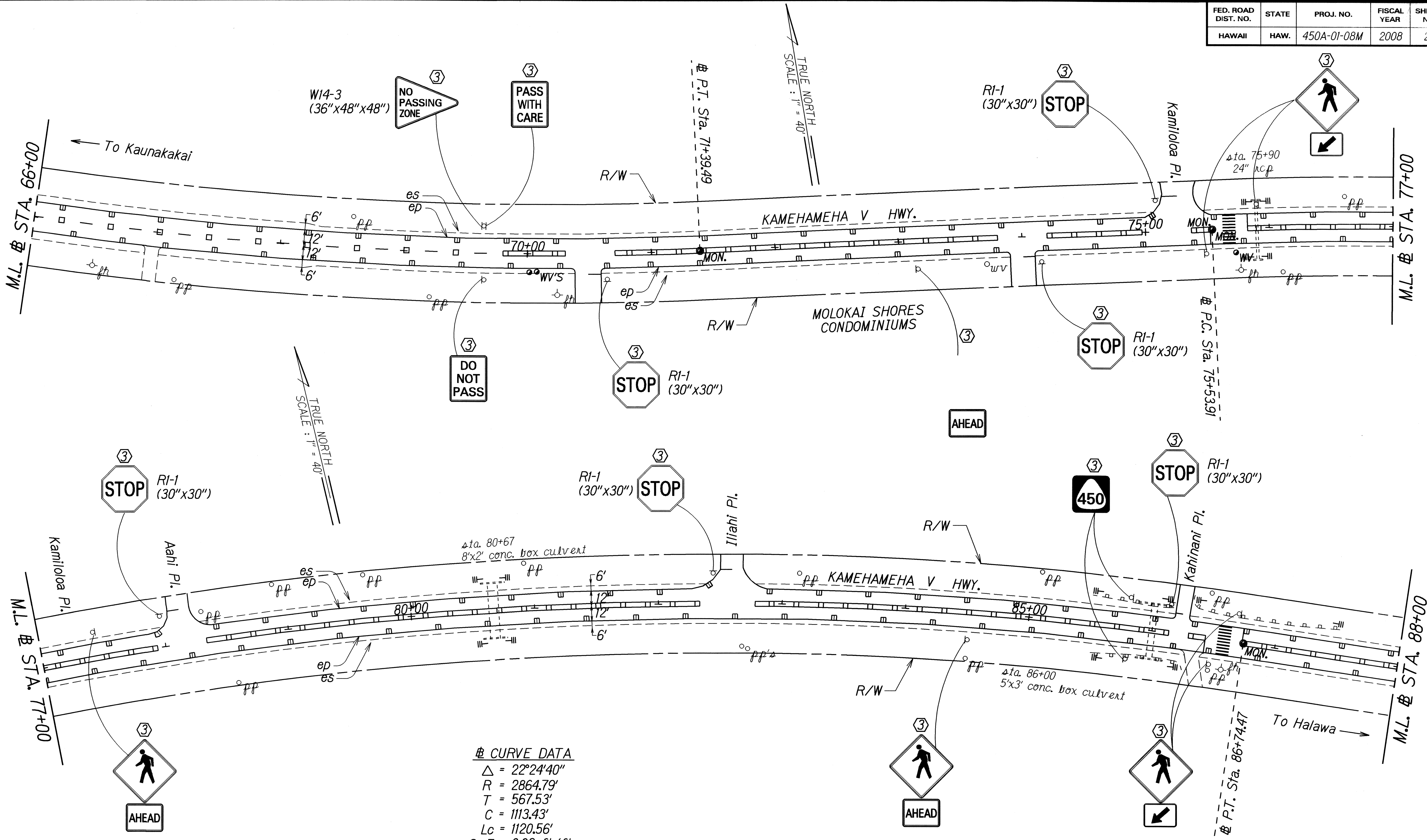
**KAMEHAMEHA V HIGHWAY RESURFACING  
Kaunakakai to Oneali'i Park**

Project No. 450A-01-08M

Scale: 1" = 40'      Date: October, 2007

SHEET No. 3 OF 8 SHEETS

FED. ROAD DIST. NO.	STATE	PROJ. NO.	FISCAL YEAR	SHEET NO.	TOTAL SHEETS
HAWAII	HAW.	450A-01-08M	2008	21	25



**④ CURVE DATA**  
 $\Delta = 22^\circ 24' 40''$   
 $R = 2864.79'$   
 $T = 567.53'$   
 $C = 1113.43'$   
 $Lc = 1120.56'$   
 $S. E. = 0.02 \text{ ft/ft}$

DATE	10/20/07
SURVEY PLOTTED BY	
DRAWN BY	JL
DESIGNED BY	Crisanto, Fabrice
QUANTITIES BY	
CHECKED BY	
ORIGINAL PLAN	
NOTE BOOK	
FILE NO.	450A-01-08M
NO.	

- KEY:**
- ① Exist. Sign(s) & Post(s) to Remain
  - ② Relocate Exist. Sign(s) & Post(s)
  - ③ Remove Exist. & Install New Sign(s) & Post(s)
  - ④ Install New Sign(s) & Post(s)

STATE OF HAWAII  
DEPARTMENT OF TRANSPORTATION  
HIGHWAYS DIVISION

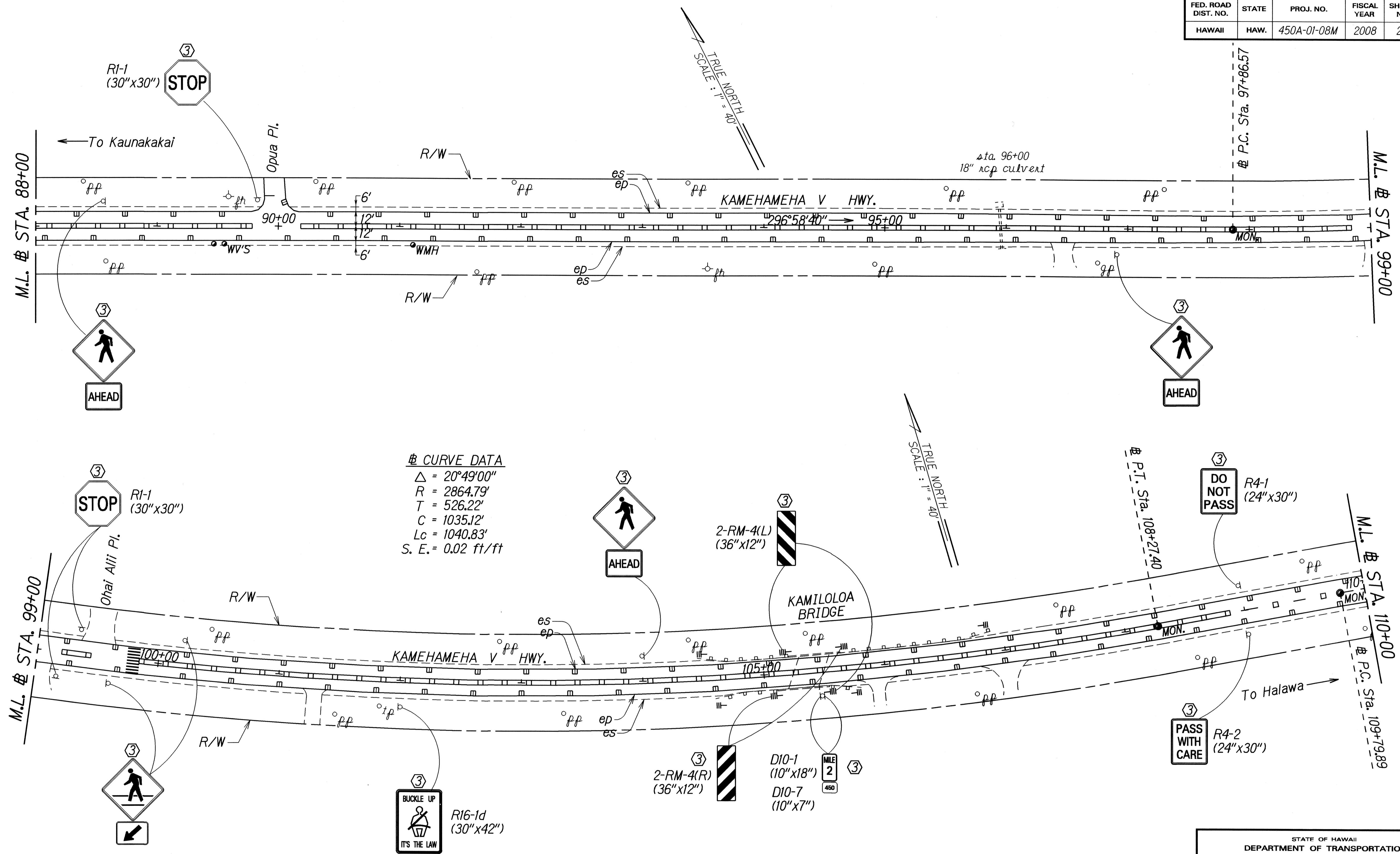
**SIGNING & PAVEMENT MARKING PLAN**

**KAMEHAMEHA V HIGHWAY RESURFACING**  
Kaunakakai to Oneali'i Park  
Project No. 450A-01-08M

Scale: 1" = 40'      Date: October, 2007

SHEET No. 4 OF 8 SHEETS

FED. ROAD DIST. NO.	STATE	PROJ. NO.	FISCAL YEAR	SHEET NO.	TOTAL SHEETS
HAWAII	HAW.	450A-01-08M	2008	22	25



DATE: 10/07  
 SURVEY PLOTTED BY: [blank]  
 DRAWN BY: [blank]  
 TRACED BY: [blank]  
 NOTE BOOK: [blank]  
 QUANTITIES BY: [blank]  
 CHECKED BY: [blank]

- KEY:**
- ① Exist. Sign(s) & Post(s) to Remain
  - ② Relocate Exist. Sign(s) & Post(s)
  - ③ Remove Exist. & Install New Sign(s) & Post(s)
  - ④ Install New Sign(s) & Post(s)

STATE OF HAWAII  
 DEPARTMENT OF TRANSPORTATION  
 HIGHWAYS DIVISION

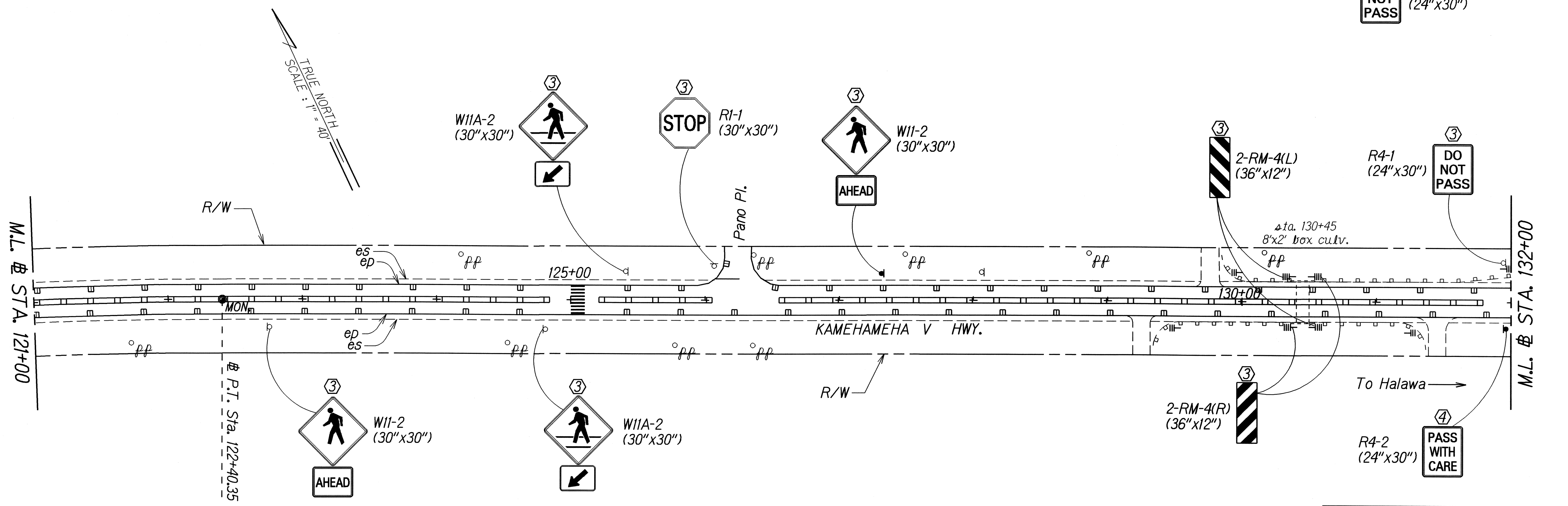
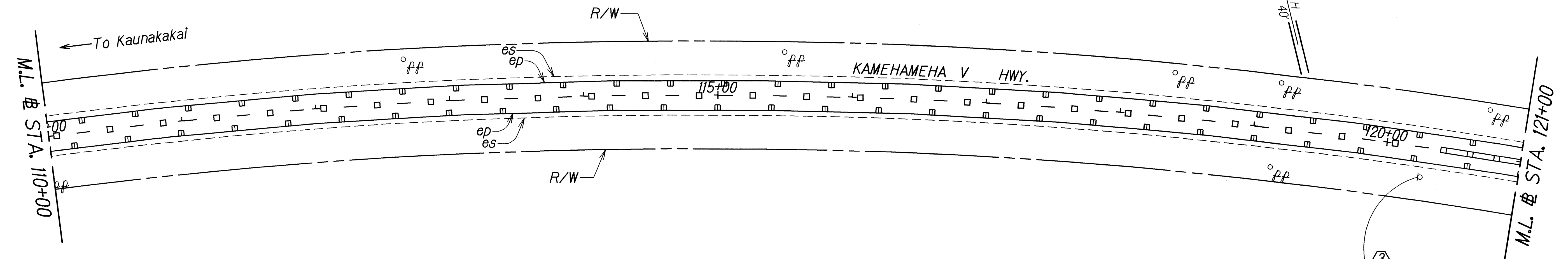
**SIGNING & PAVEMENT MARKING PLAN**

KAMEHAMEHA V HIGHWAY RESURFACING  
 Kaunakakai to Oneali Park  
 Project No. 450A-01-08M

Scale: 1" = 40' Date: October, 2007

SHEET No. 5 OF 8 SHEETS

FED. ROAD DIST. NO.	STATE	PROJ. NO.	FISCAL YEAR	SHEET NO.	TOTAL SHEETS
HAWAII	HAW.	450A-01-08M	2008	23	25



ORIGINAL PLAN	DATE
SURVEY PLOTTED BY	10/2007
DRAWN BY	JD
DESIGNED BY	CC/SL/ST/00
INVESTIGATED BY	CC/SL/ST/00
QUANTITIES BY	CC/SL/ST/00
CHECKED BY	CC/SL/ST/00

- KEY:**
- ① Exist. Sign(s) & Post(s) to Remain
  - ② Relocate Exist. Sign(s) & Post(s)
  - ③ Remove Exist. & Install New Sign(s) & Post(s)
  - ④ Install New Sign(s) & Post(s)

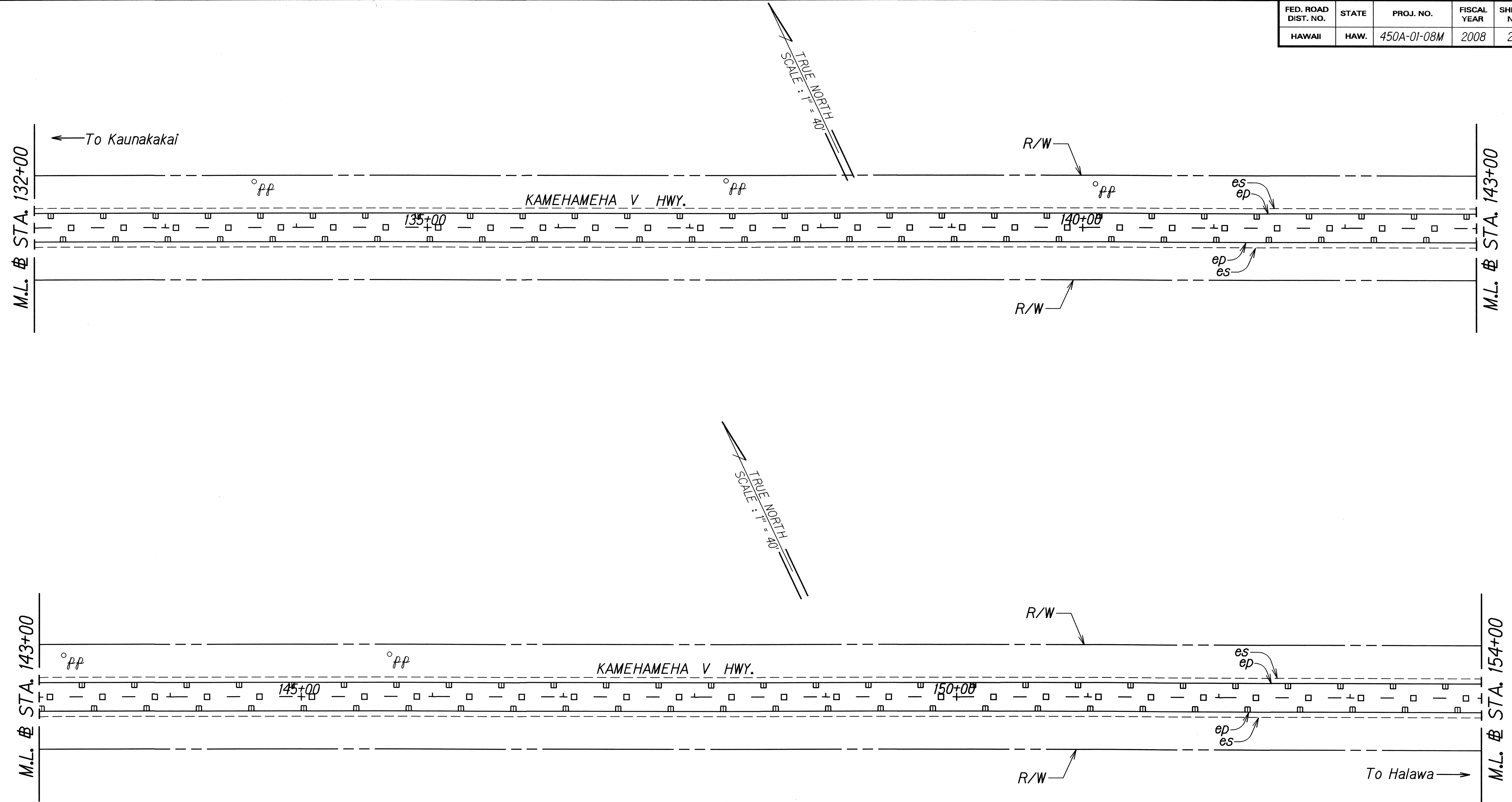
STATE OF HAWAII  
DEPARTMENT OF TRANSPORTATION  
HIGHWAYS DIVISION

**SIGNING & PAVEMENT  
MARKING PLAN**

**KAMEHAMEHA V HIGHWAY RESURFACING  
Kaunakakai to Oneali'i Park  
Project No. 450A-01-08M**

Scale: 1" = 40'      Date: October, 2007

FED. ROAD DIST. NO.	STATE	PROJ. NO.	FISCAL YEAR	SHEET NO.	TOTAL SHEETS
HAWAII	HAW.	450A-01-08M	2008	24	25



ORIGINAL PLAN	SURVEY PLOTTED BY	DATE
FILED BY	DRAWN BY	10/20/07
NOTED BY	TRACED BY	
CHECKED BY	QUANTITIES BY	

- KEY:**
- ① Exist. Sign(s) & Post(s) to Remain
  - ② Relocate Exist. Sign(s) & Post(s)
  - ③ Remove Exist. & Install New Sign(s) & Post(s)
  - ④ Install New Sign(s) & Post(s)

STATE OF HAWAII  
DEPARTMENT OF TRANSPORTATION  
HIGHWAYS DIVISION

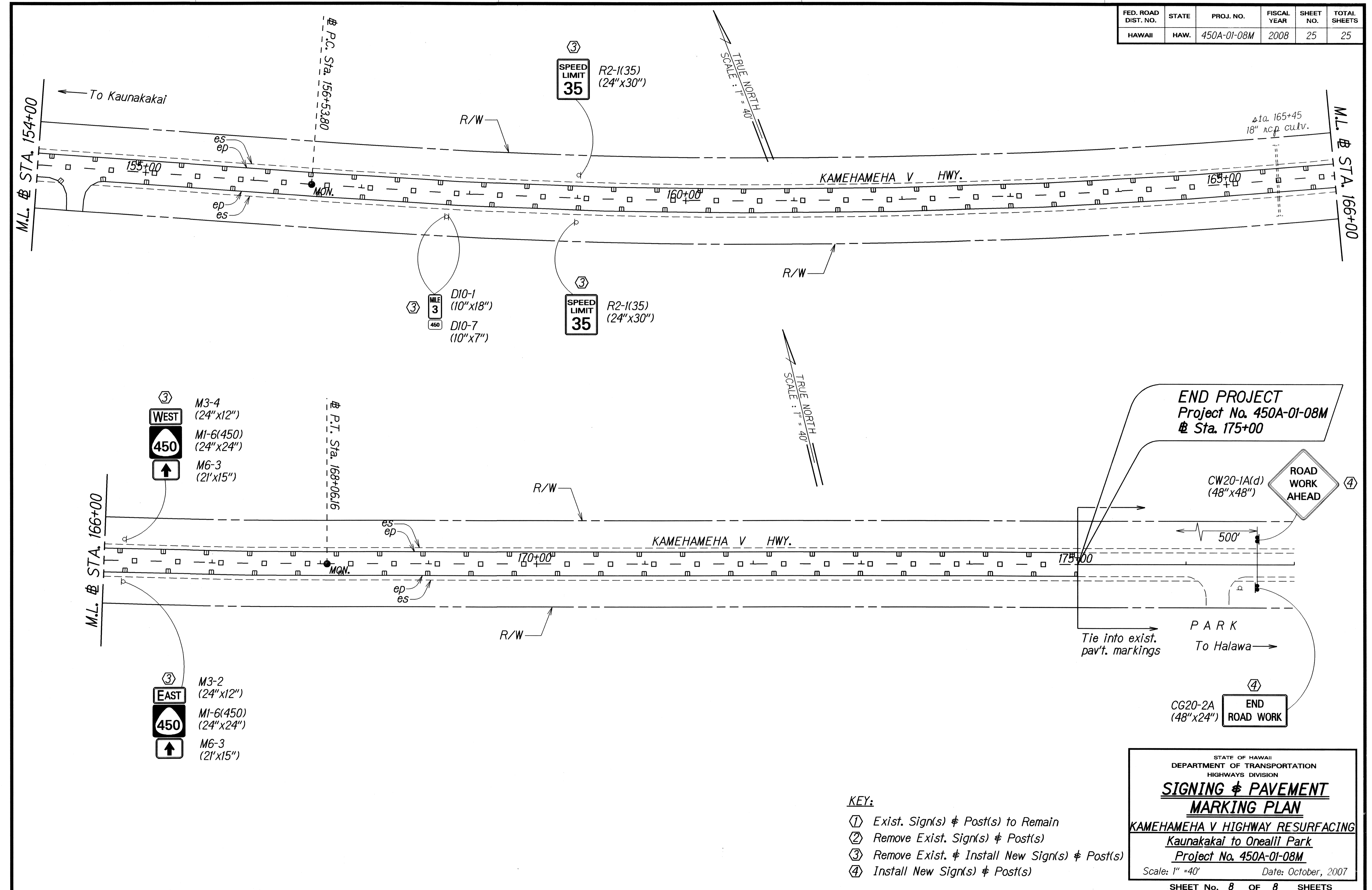
**SIGNING & PAVEMENT  
MARKING PLAN**

**KAMEHAMEHA V HIGHWAY RESURFACING  
Kaunakakai to Oneali'i Park  
Project No. 450A-01-08M**

Scale: 1" = 40'      Date: October, 2007

SHEET No. 7 OF 8 SHEETS

FED. ROAD DIST. NO.	STATE	PROJ. NO.	FISCAL YEAR	SHEET NO.	TOTAL SHEETS
HAWAII	HAW.	450A-01-08M	2008	25	25



③ M3-4 (24"x12")  
 WEST  
 ④ 450  
 MI-6(450) (24"x24")  
 M6-3 (21"x15")

③ M3-2 (24"x12")  
 EAST  
 ④ 450  
 MI-6(450) (24"x24")  
 M6-3 (21"x15")

③ SPEED LIMIT 35  
 R2-1(35) (24"x30")

③ SPEED LIMIT 35  
 R2-1(35) (24"x30")

③ MILE 3  
 D10-1 (10"x18")  
 D10-7 (10"x7")

END PROJECT  
 Project No. 450A-01-08M  
 # Sta. 175+00

ROAD WORK AHEAD  
 CW20-1A(d) (48"x48")

END ROAD WORK  
 CG20-2A (48"x24")

- KEY:**
- ① Exist. Sign(s) & Post(s) to Remain
  - ② Remove Exist. Sign(s) & Post(s)
  - ③ Remove Exist. & Install New Sign(s) & Post(s)
  - ④ Install New Sign(s) & Post(s)

ORIGINAL PLAN	DATE
SURVEY PLOTTED BY	10/2007
DRAWN BY	
TRACED BY	
NOTED BOOK	
QUANTITIES BY	
CHECKED BY	

STATE OF HAWAII  
 DEPARTMENT OF TRANSPORTATION  
 HIGHWAYS DIVISION  
**SIGNING & PAVEMENT MARKING PLAN**  
 KAMEHAMEHA V HIGHWAY RESURFACING  
 Kaunakakai to Oneali Park  
 Project No. 450A-01-08M  
 Scale: 1" = 40' Date: October, 2007  
 SHEET No. 8 OF 8 SHEETS