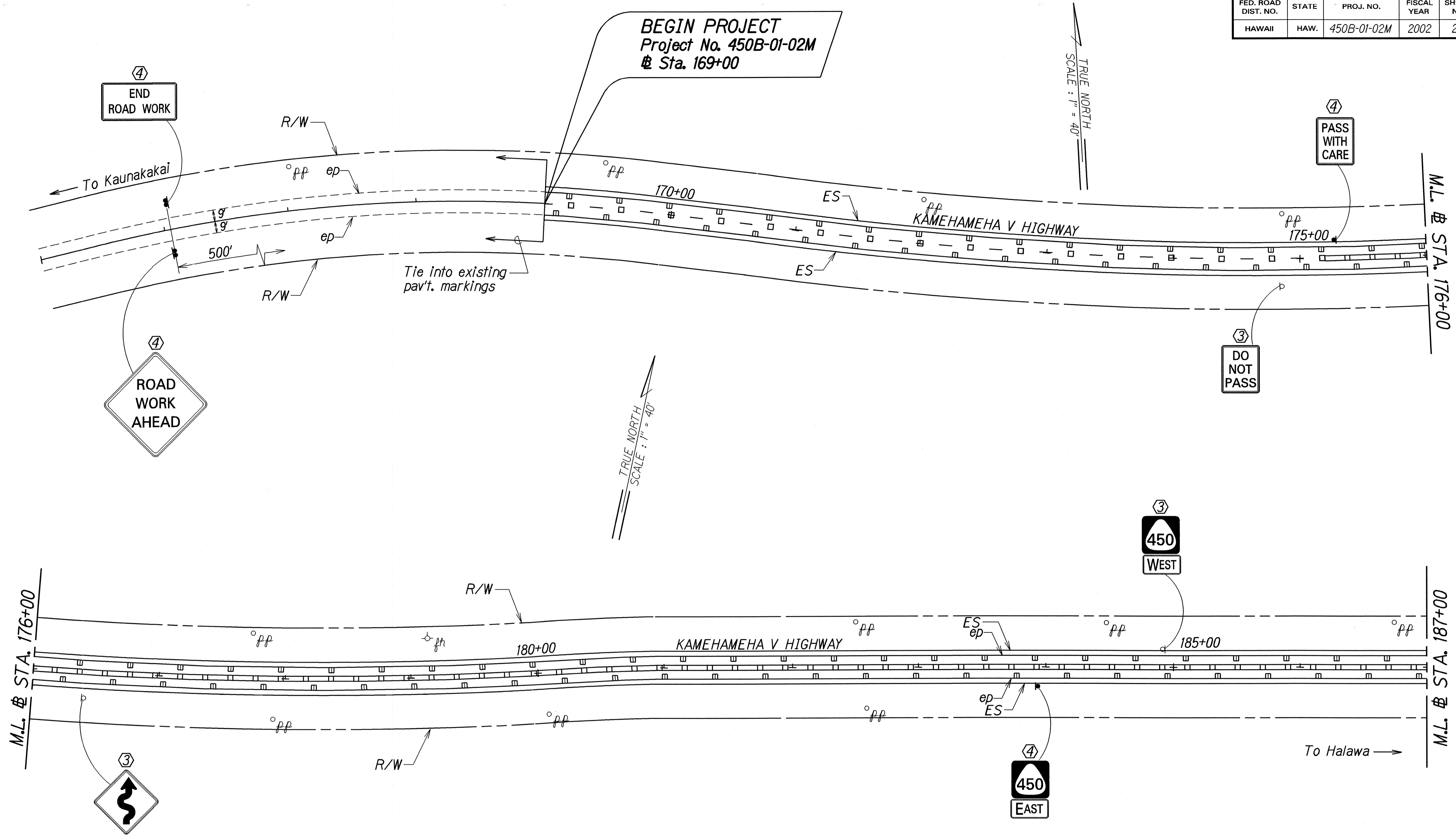


FED. ROAD DIST. NO.	STATE	PROJ. NO.	FISCAL YEAR	SHEET NO.	TOTAL SHEETS
HAWAII	HAW.	450B-01-02M	2002	25	40



SURVEY PLOTTED BY	DATE
DESIGNED BY	JUNE 01
QUANTITIES BY	
CHECKED BY	
ORIGINAL PLAN	
NOTE BOOK	
DESIGNED BY	
QUANTITIES BY	
CHECKED BY	

- KEY:**
- ① Exist. Sign(s) & Post(s) to Remain
 - ② Remove Exist. Sign(s) & Post(s)
 - ③ Remove Exist. & Install New Sign(s) & Post(s)
 - ④ Install New Sign(s) & Post(s)

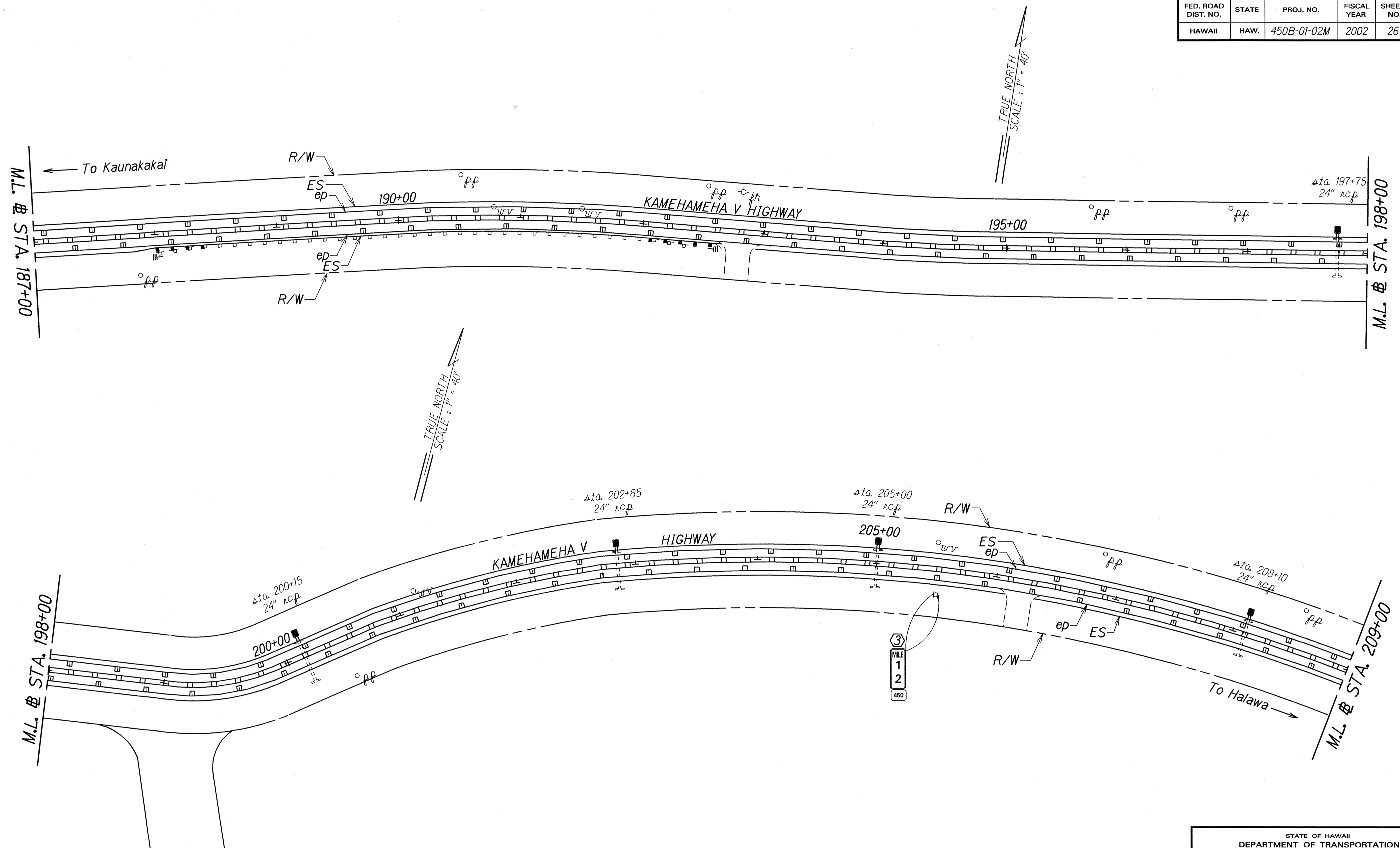
STATE OF HAWAII
DEPARTMENT OF TRANSPORTATION
HIGHWAYS DIVISION

**SIGNING & PAVEMENT
MARKING PLAN**

KAMEHAMEHA V HIGHWAY RESURFACING
Kamalo to Pukoo
Project No. 450B-01-02M
Scale: 1" = 40' Date: May, 2001

SHEET No. 1 OF 13 SHEETS

FED. ROAD DIST. NO.	STATE	PROJ. NO.	FISCAL YEAR	SHEET NO.	TOTAL SHEETS
HAWAII	HAW.	450B-01-02M	2002	26	40



DATE	2002.01
SURVEY PLOTTED BY	
DESIGNED BY	
QUANTITIES BY	
CHECKED BY	
ORIGINAL PLAN	
NOTE BOOK	
9/16/01/2001	
9/16/01/2001	

- KEY:**
- ① Exist. Sign(s) & Post(s) to Remain
 - ② Remove Exist. Sign(s) & Post(s)
 - ③ Remove Exist. & Install New Sign(s) & Post(s)
 - ④ Install New Sign(s) & Post(s)

STATE OF HAWAII
DEPARTMENT OF TRANSPORTATION
HIGHWAYS DIVISION

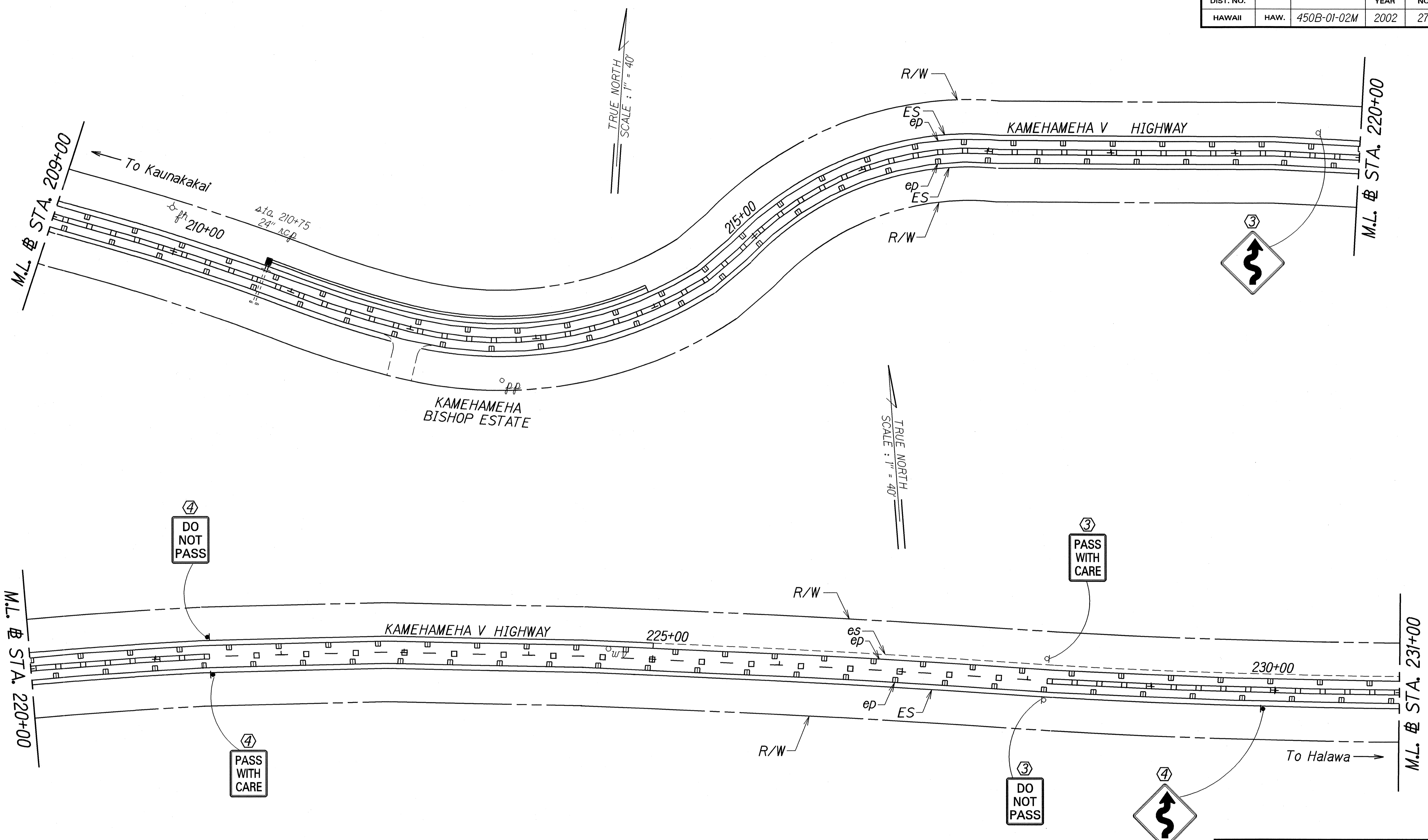
**SIGNING & PAVEMENT
MARKING PLAN**

KAMEHAMEHA V HIGHWAY RESURFACING
Kamalo to Pukoo

Project No. 450B-01-02M
Scale: 1" = 40' Date: May, 2001

SHEET No. 2 OF 13 SHEETS

FED. ROAD DIST. NO.	STATE	PROJ. NO.	FISCAL YEAR	SHEET NO.	TOTAL SHEETS
HAWAII	HAW.	450B-01-02M	2002	27	40



ORIGINAL PLAN	DATE	5/21/01
SURVEY PLOTTED BY		
DRAWN BY		
NOTE BOOK		
DESIGNED BY		
QUANTITIES BY		
CHECKED BY		

- KEY:**
- ① Exist. Sign(s) & Post(s) to Remain
 - ② Remove Exist. Sign(s) & Post(s)
 - ③ Remove Exist. & Install New Sign(s) & Post(s)
 - ④ Install New Sign(s) & Post(s)

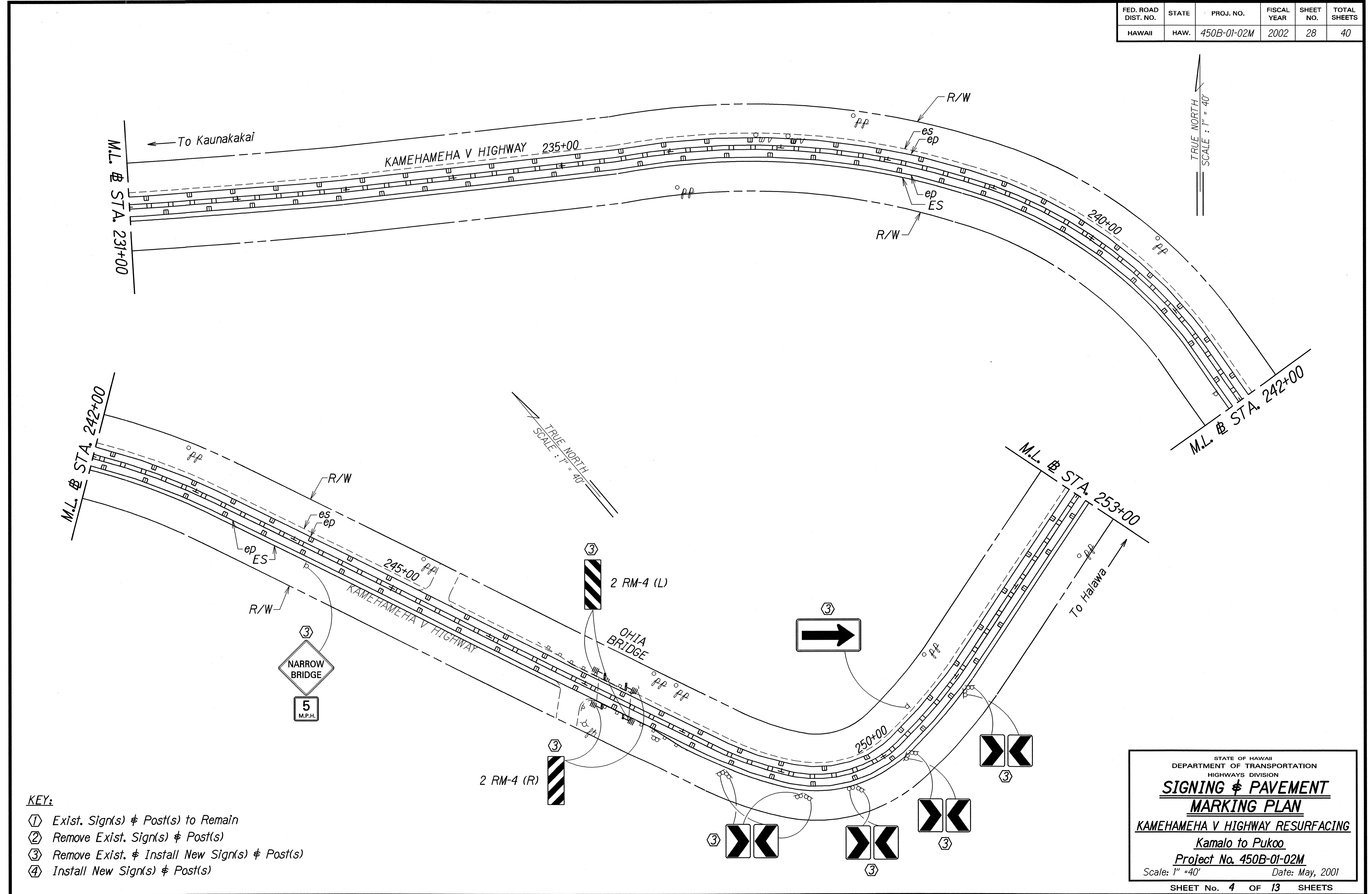
STATE OF HAWAII
DEPARTMENT OF TRANSPORTATION
HIGHWAYS DIVISION

**SIGNING & PAVEMENT
MARKING PLAN**

KAMEHAMEHA V HIGHWAY RESURFACING
Kamalo to Pukoo
Project No. 450B-01-02M
Scale: 1" = 40' Date: May, 2001

SHEET No. 3 OF 13 SHEETS

FED. ROAD DIST. NO.	STATE	PROJ. NO.	FISCAL YEAR	SHEET NO.	TOTAL SHEETS
HAWAII	HAW.	450B-01-02M	2002	28	40



SURVEY PLOTTED BY	DATE
DESIGNED BY	
NOTED BY	
QUANTITIES BY	
CHECKED BY	

- KEY:**
- ① Exist. Sign(s) & Post(s) to Remain
 - ② Remove Exist. Sign(s) & Post(s)
 - ③ Remove Exist. & Install New Sign(s) & Post(s)
 - ④ Install New Sign(s) & Post(s)

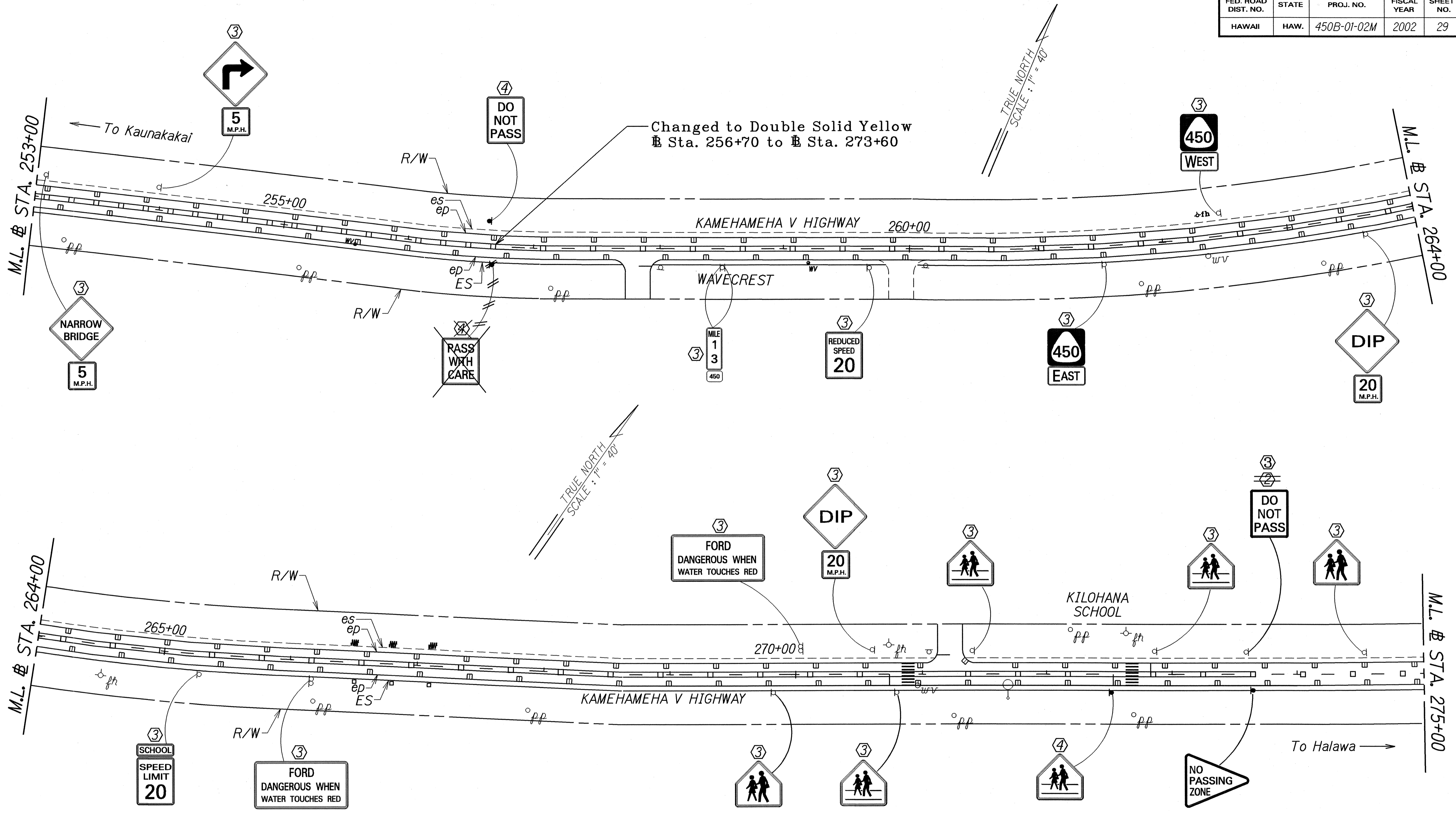
STATE OF HAWAII
DEPARTMENT OF TRANSPORTATION
HIGHWAYS DIVISION

**SIGNING & PAVEMENT
MARKING PLAN**

KAMEHAMEHA V HIGHWAY RESURFACING
Kamalo to Pukoo
Project No. 450B-01-02M
Scale: 1" = 40' Date: May, 2001

SHEET No. 4 OF 13 SHEETS

FED. ROAD DIST. NO.	STATE	PROJ. NO.	FISCAL YEAR	SHEET NO.	TOTAL SHEETS
HAWAII	HAW.	450B-01-02M	2002	29	40



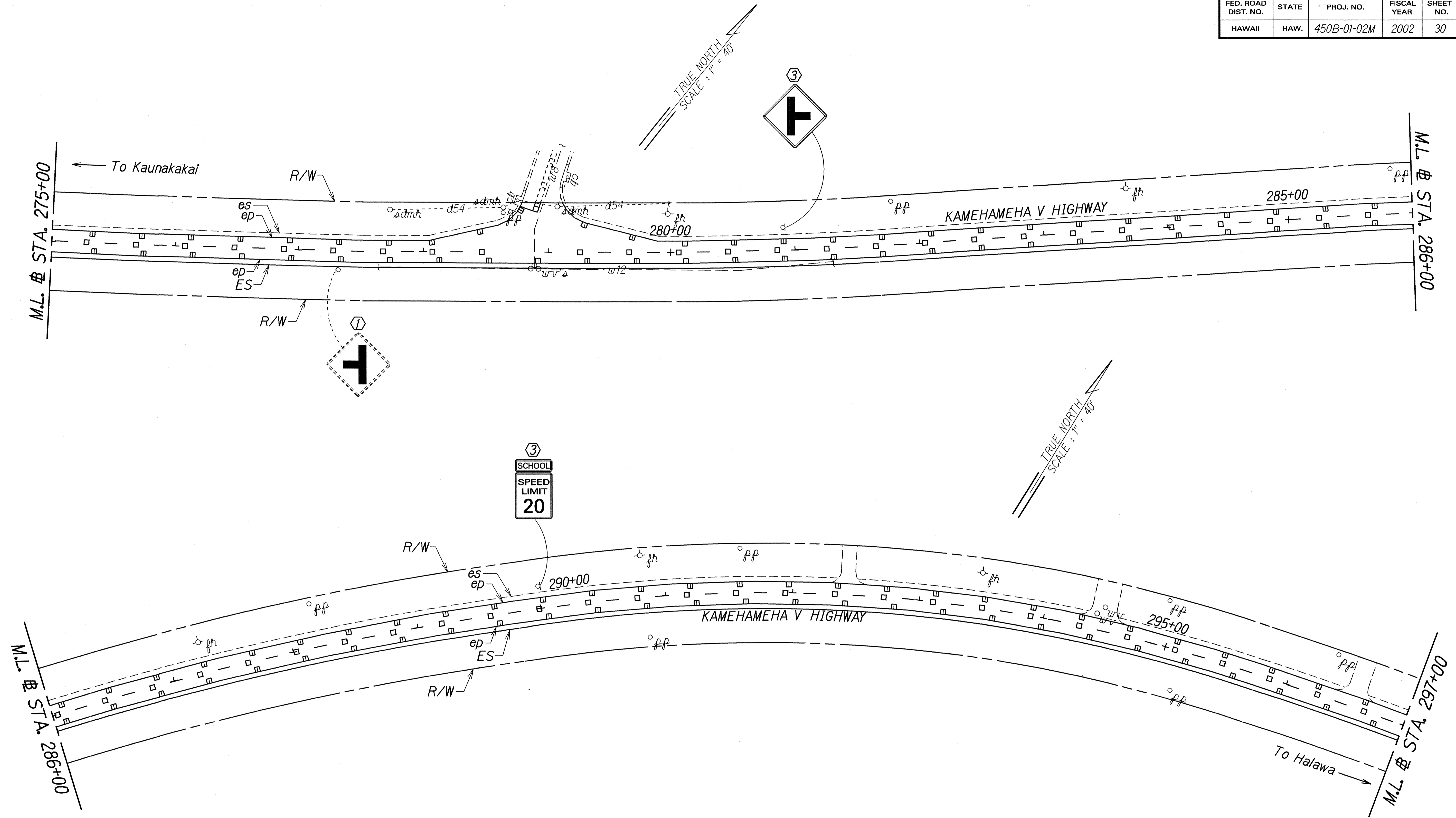
SURVEY PLOTTED BY: _____ DATE: _____
 DRAWN BY: _____
 TRACED BY: _____
 DESIGNED BY: _____
 CHECKED BY: _____

- KEY:**
- ① Exist. Sign(s) & Post(s) to Remain
 - ② Remove Exist. Sign(s) & Post(s)
 - ③ Remove Exist. & Install New Sign(s) & Post(s)
 - ④ Install New Sign(s) & Post(s)

STATE OF HAWAII
 DEPARTMENT OF TRANSPORTATION
 HIGHWAYS DIVISION
SIGNING & PAVEMENT MARKING PLAN
 KAMEHAMEHA V HIGHWAY RESURFACING
 Kamalo to Pukoo
 Project No. 450B-01-02M
 Scale: 1" = 40' Date: May, 2001
 SHEET No. 5 OF 13 SHEETS

"AS-BUILT"

FED. ROAD DIST. NO.	STATE	PROJ. NO.	FISCAL YEAR	SHEET NO.	TOTAL SHEETS
HAWAII	HAW.	450B-01-02M	2002	30	40



SURVEY PLOTTED BY	DATE
DESIGNED BY	
NOTED BY	
QUANTITIES BY	
CHECKED BY	

- KEY:**
- ① Exist. Sign(s) & Post(s) to Remain
 - ② Remove Exist. Sign(s) & Post(s)
 - ③ Remove Exist. & Install New Sign(s) & Post(s)
 - ④ Install New Sign(s) & Post(s)

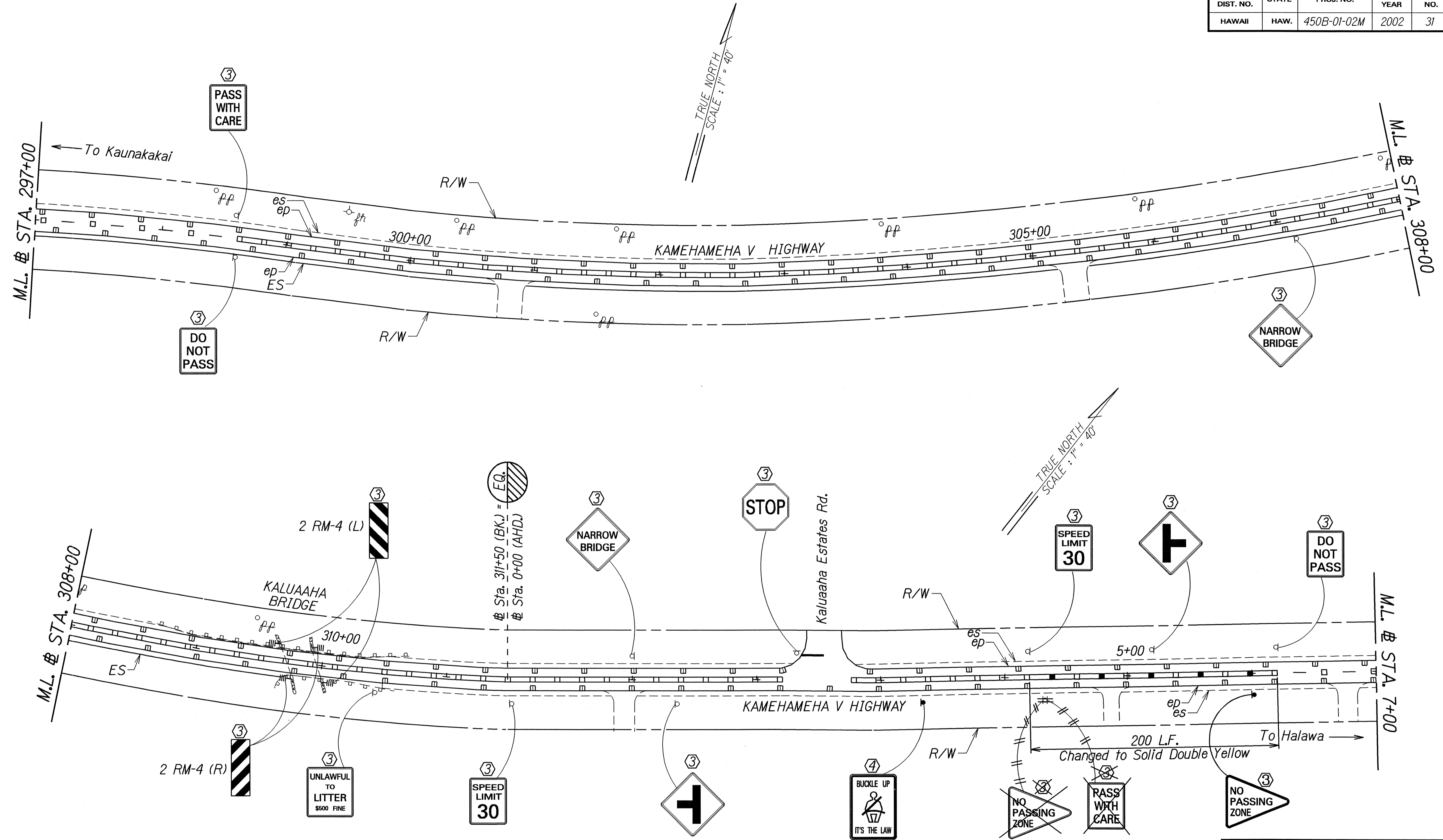
STATE OF HAWAII
DEPARTMENT OF TRANSPORTATION
HIGHWAYS DIVISION

**SIGNING & PAVEMENT
MARKING PLAN**

KAMEHAMEHA V HIGHWAY RESURFACING
Kamalo to Pukoo
Project No. 450B-01-02M
Scale: 1" = 40' Date: May, 2001

SHEET No. 6 OF 13 SHEETS

FED. ROAD DIST. NO.	STATE	PROJ. NO.	FISCAL YEAR	SHEET NO.	TOTAL SHEETS
HAWAII	HAW.	450B-01-02M	2002	31	40



DATE	5/20/01
SURVEY PLOTTED BY	
DRAWN BY	LL
NOTE BOOK	
DESIGNED BY	LL
REVISIONS BY	
CHECKED BY	LL

- KEY:**
- ① Exist. Sign(s) & Post(s) to Remain
 - ② Remove Exist. Sign(s) & Post(s)
 - ③ Remove Exist. & Install New Sign(s) & Post(s)
 - ④ Install New Sign(s) & Post(s)

STATE OF HAWAII
DEPARTMENT OF TRANSPORTATION
HIGHWAYS DIVISION

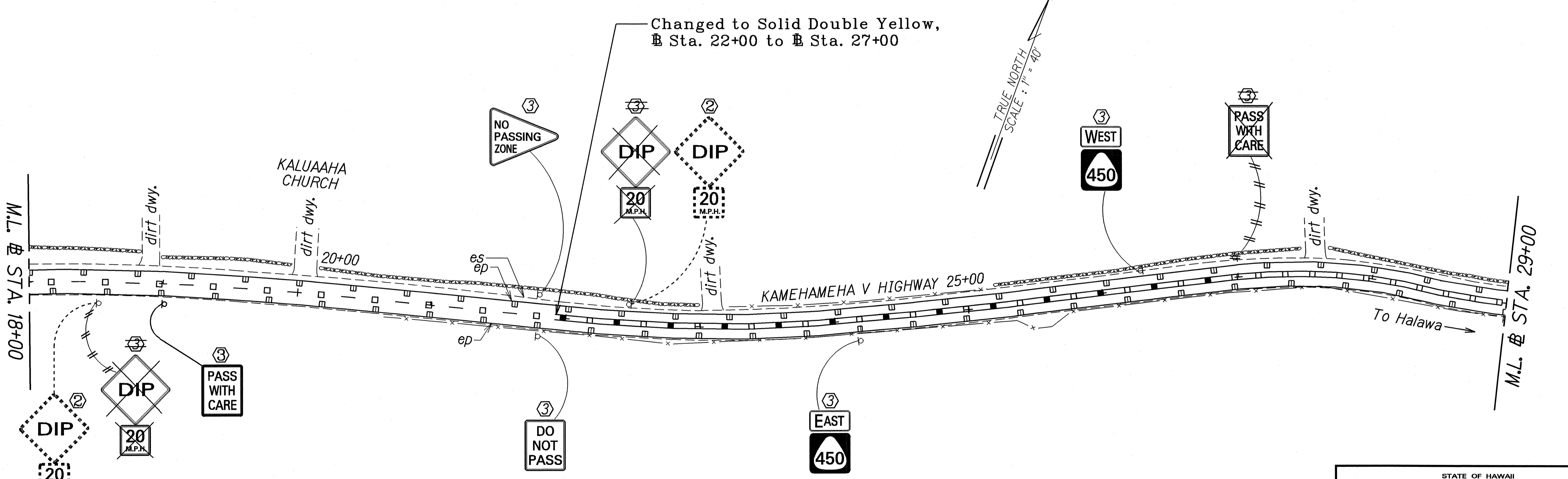
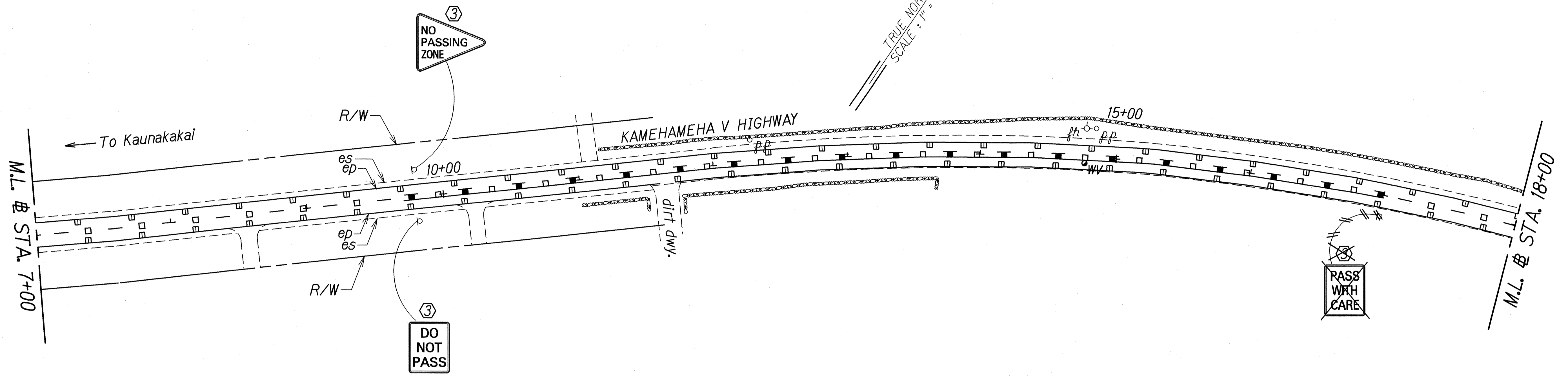
**SIGNING & PAVEMENT
MARKING PLAN**

KAMEHAMEHA V HIGHWAY RESURFACING
Kamalo to Pukoo
Project No. 450B-01-02M
Scale: 1" = 40' Date: May, 2001

SHEET No. 7 OF 13 SHEETS

"AS-BUILT"

FED. ROAD DIST. NO.	STATE	PROJ. NO.	FISCAL YEAR	SHEET NO.	TOTAL SHEETS
HAWAII	HAW.	450B-01-02M	2002	32	40



ORIGINAL SURVEY PLOTTED BY: _____ DATE: _____
 PLAN DRAWN BY: _____
 NOTE BOOK _____
 CHECKED BY: _____

- KEY:**
- ① Exist. Sign(s) & Post(s) to Remain
 - ② Remove Exist. Sign(s) & Post(s)
 - ③ Remove Exist. & Install New Sign(s) & Post(s)
 - ④ Install New Sign(s) & Post(s)

STATE OF HAWAII
 DEPARTMENT OF TRANSPORTATION
 HIGHWAYS DIVISION

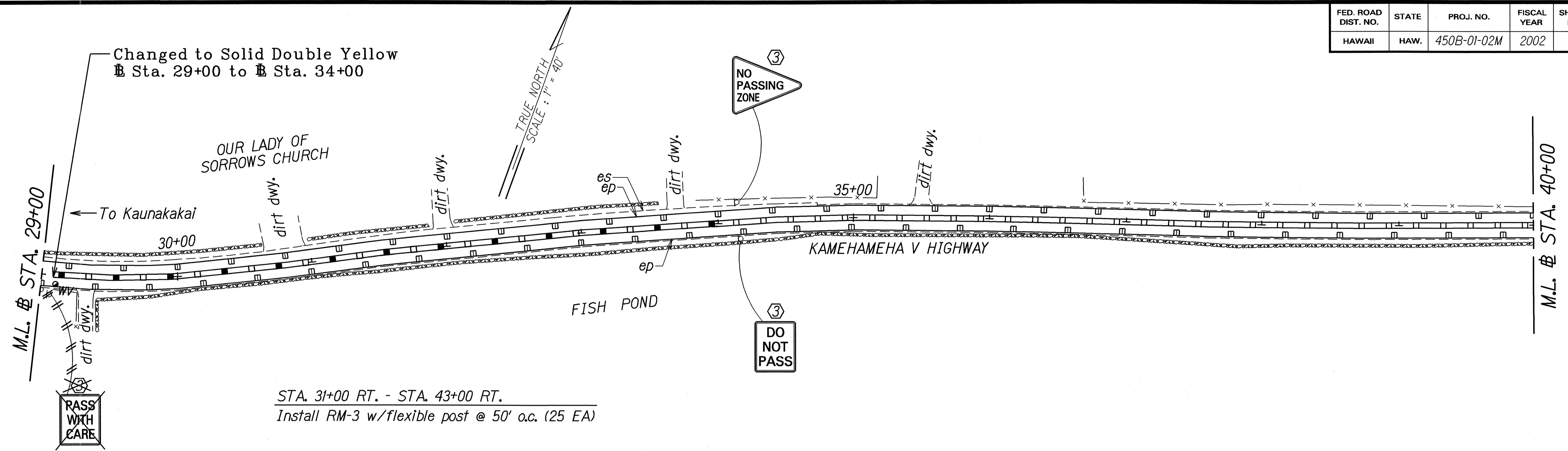
**SIGNING & PAVEMENT
 MARKING PLAN**

KAMEHAMEHA V HIGHWAY RESURFACING
 Kamalo to Pukoo
 Project No. 450B-01-02M
 Scale: 1" = 40' Date: May, 2001

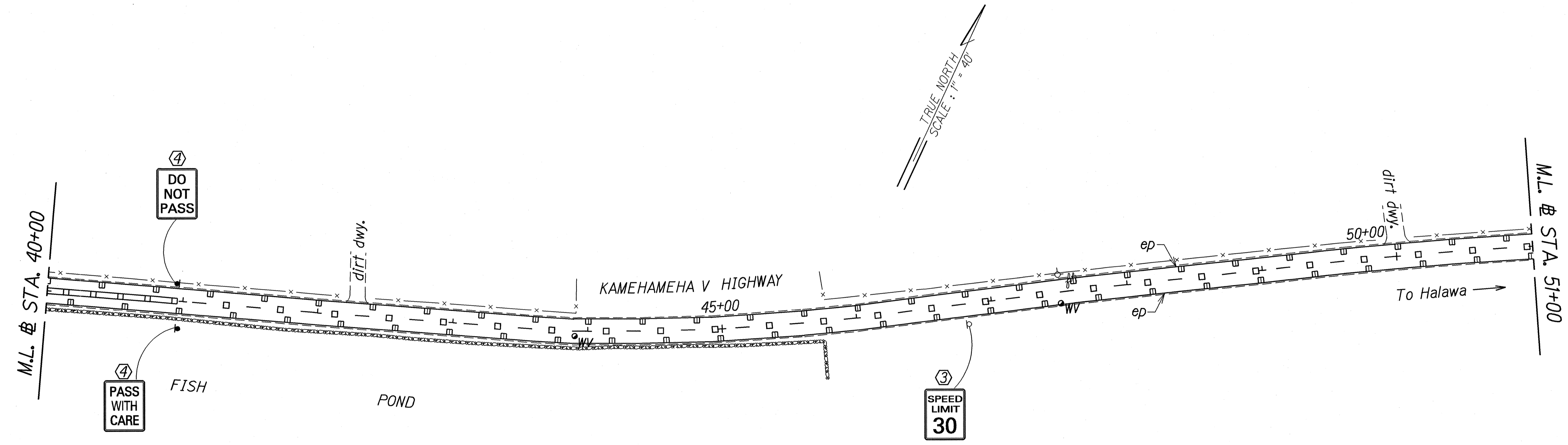
SHEET No. 8 OF 13 SHEETS

"AS-BUILT"

FED. ROAD DIST. NO.	STATE	PROJ. NO.	FISCAL YEAR	SHEET NO.	TOTAL SHEETS
HAWAII	HAW.	450B-01-02M	2002	33	40



STA. 31+00 RT. - STA. 43+00 RT.
Install RM-3 w/flexible post @ 50' o.c. (25 EA)



ORIGINAL PLAN	DATE	SCALE
SURVEY PLOTTED BY		
DRAWN BY		
NOTE BOOK		
DESIGNED BY		
CHECKED BY		

- KEY:
- ① Exist. Sign(s) & Post(s) to Remain
 - ② Remove Exist. Sign(s) & Post(s)
 - ③ Remove Exist. & Install New Sign(s) & Post(s)
 - ④ Install New Sign(s) & Post(s)

STATE OF HAWAII
DEPARTMENT OF TRANSPORTATION
HIGHWAYS DIVISION

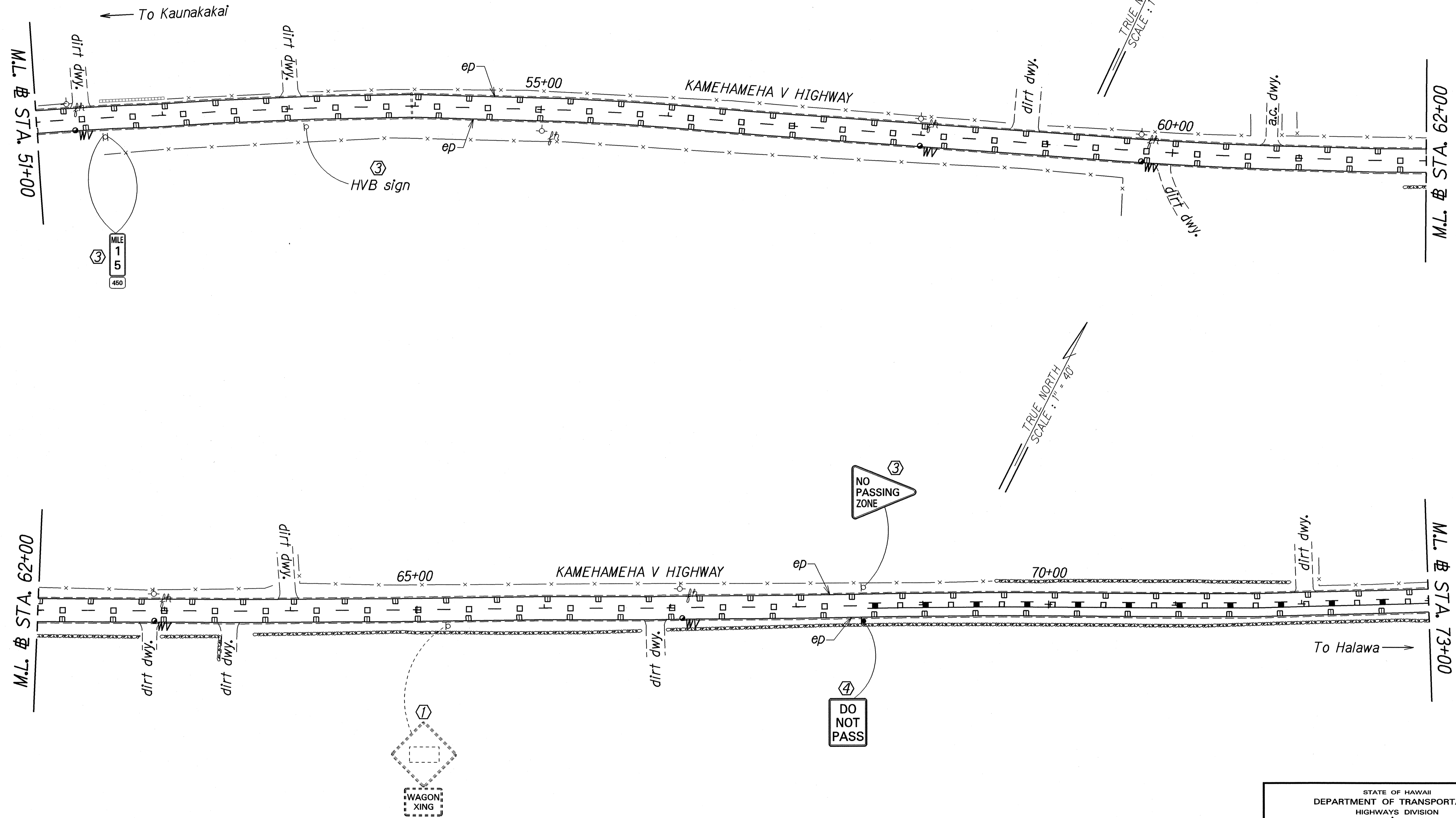
**SIGNING & PAVEMENT
MARKING PLAN**

KAMEHAMEHA V HIGHWAY RESURFACING
Kamalo to Pukoo
Project No. 450B-01-02M
Scale: 1" = 40' Date: May, 2001

SHEET No. 9 OF 13 SHEETS

"AS-BUILT"

FED. ROAD DIST. NO.	STATE	PROJ. NO.	FISCAL YEAR	SHEET NO.	TOTAL SHEETS
HAWAII	HAW.	450B-01-02M	2002	34	40



SURVEY PLOTTED BY	DATE
DESIGNED BY	2001.01
NOTED BY	
QUANTITIES BY	
CHECKED BY	

- KEY:**
- ① Exist. Sign(s) & Post(s) to Remain
 - ② Remove Exist. Sign(s) & Post(s)
 - ③ Remove Exist. & Install New Sign(s) & Post(s)
 - ④ Install New Sign(s) & Post(s)

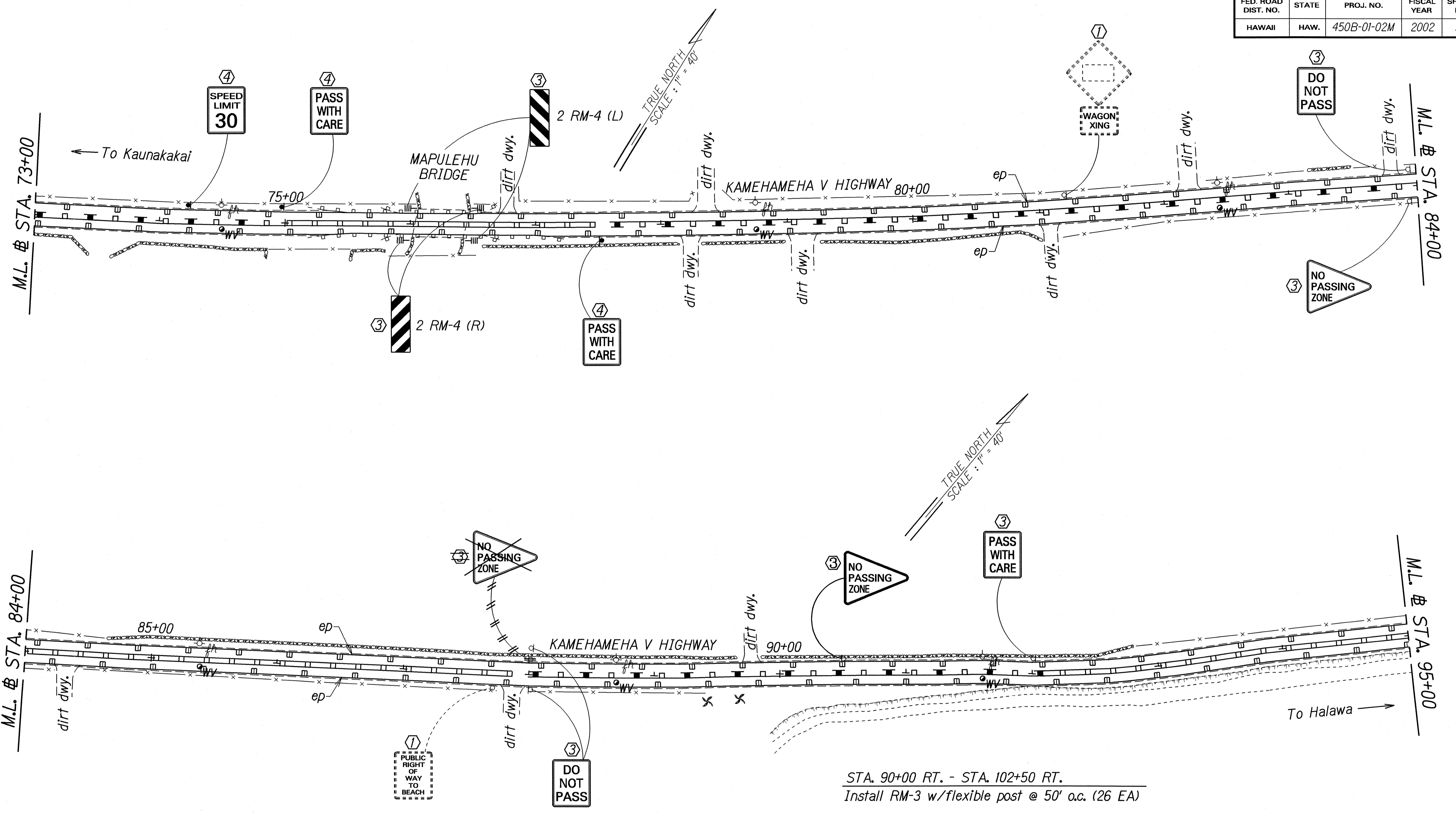
STATE OF HAWAII
DEPARTMENT OF TRANSPORTATION
HIGHWAYS DIVISION

**SIGNING & PAVEMENT
MARKING PLAN**

KAMEHAMEHA V HIGHWAY RESURFACING
Kamalo to Pukoo
Project No. 450B-01-02M
Scale: 1" = 40' Date: May, 2001

SHEET No. 10 OF 13 SHEETS

FED. ROAD DIST. NO.	STATE	PROJ. NO.	FISCAL YEAR	SHEET NO.	TOTAL SHEETS
HAWAII	HAW.	450B-01-02M	2002	35	40



STA. 90+00 RT. - STA. 102+50 RT.
Install RM-3 w/flexible post @ 50' o.c. (26 EA)

ORIGINAL PLAN	DATE
SURVEY PLOTTED BY	DATE
DRAWN BY	DATE
TRACED BY	DATE
NOTE BOOK	DATE
REVISIONS BY	DATE
CHECKED BY	DATE

- KEY:**
- ① Exist. Sign(s) & Post(s) to Remain
 - ② Remove Exist. Sign(s) & Post(s)
 - ③ Remove Exist. & Install New Sign(s) & Post(s)
 - ④ Install New Sign(s) & Post(s)

STATE OF HAWAII
DEPARTMENT OF TRANSPORTATION
HIGHWAYS DIVISION

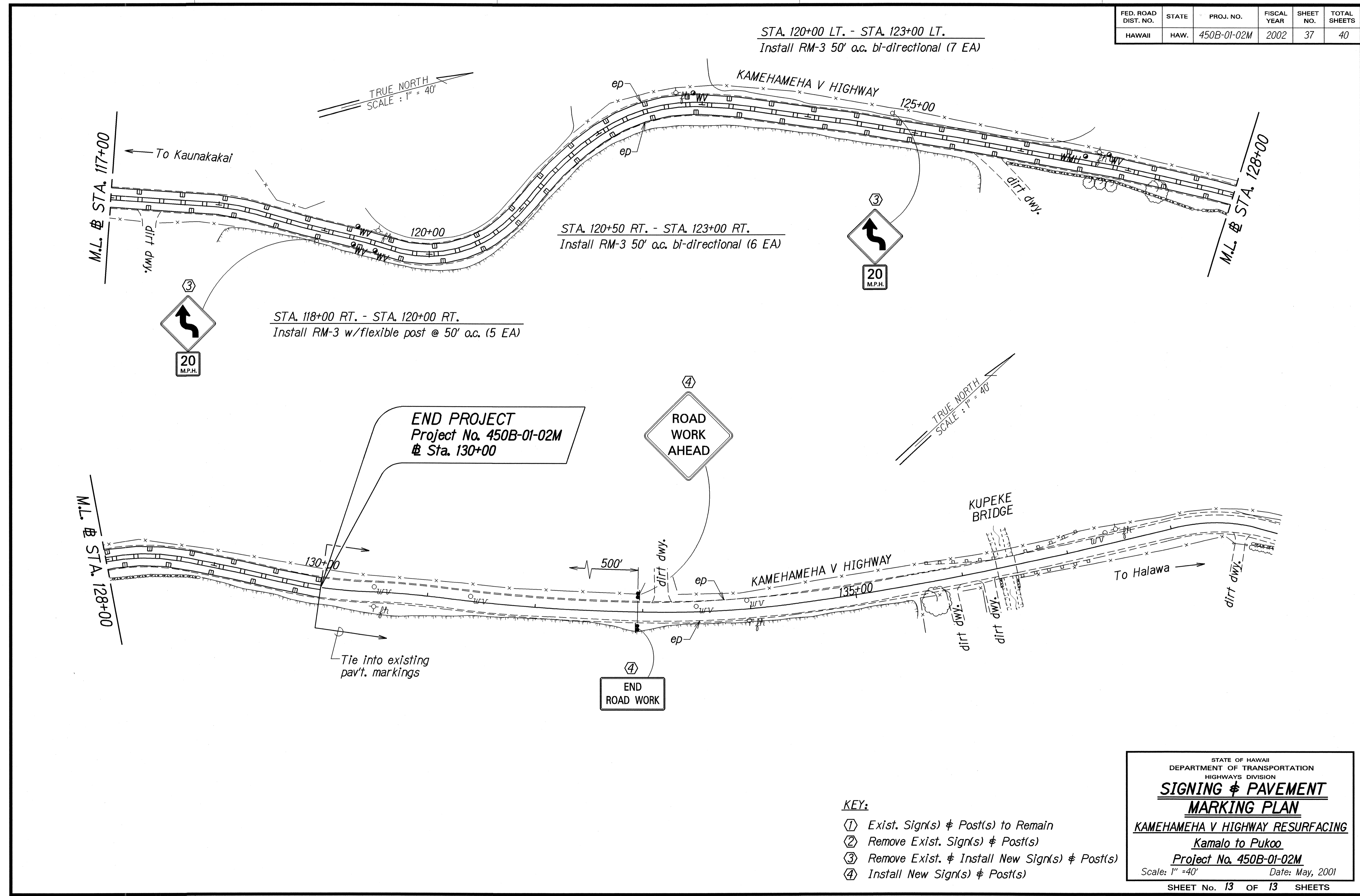
**SIGNING & PAVEMENT
MARKING PLAN**

KAMEHAMEHA V HIGHWAY RESURFACING
Kamalo to Pukoo
Project No. 450B-01-02M
Scale: 1" = 40' Date: May, 2001

SHEET No. 11 OF 13 SHEETS

"AS-BUILT"

FED. ROAD DIST. NO.	STATE	PROJ. NO.	FISCAL YEAR	SHEET NO.	TOTAL SHEETS
HAWAII	HAW.	450B-01-02M	2002	37	40



ORIGINAL PLAN	DATE	2001.01
DESIGNED BY		
DESIGNED BY		
QUANTITIES BY		
CHECKED BY		

- KEY:**
- ① Exist. Sign(s) & Post(s) to Remain
 - ② Remove Exist. Sign(s) & Post(s)
 - ③ Remove Exist. & Install New Sign(s) & Post(s)
 - ④ Install New Sign(s) & Post(s)

STATE OF HAWAII
DEPARTMENT OF TRANSPORTATION
HIGHWAYS DIVISION

**SIGNING & PAVEMENT
MARKING PLAN**

KAMEHAMEHA V HIGHWAY RESURFACING
Kamalo to Pukoo
Project No. 450B-01-02M
Scale: 1" = 40' Date: May, 2001

SHEET No. 13 OF 13 SHEETS