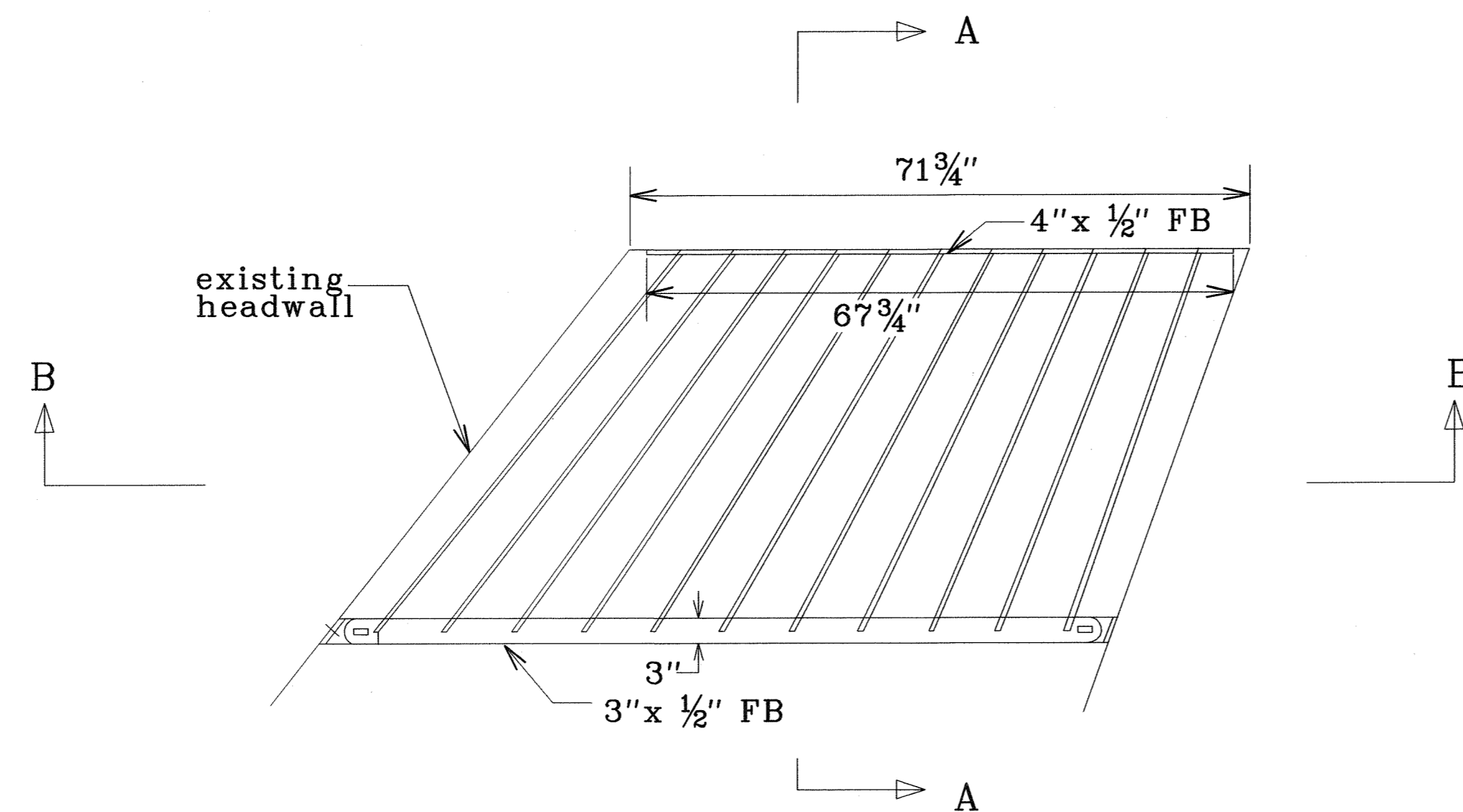
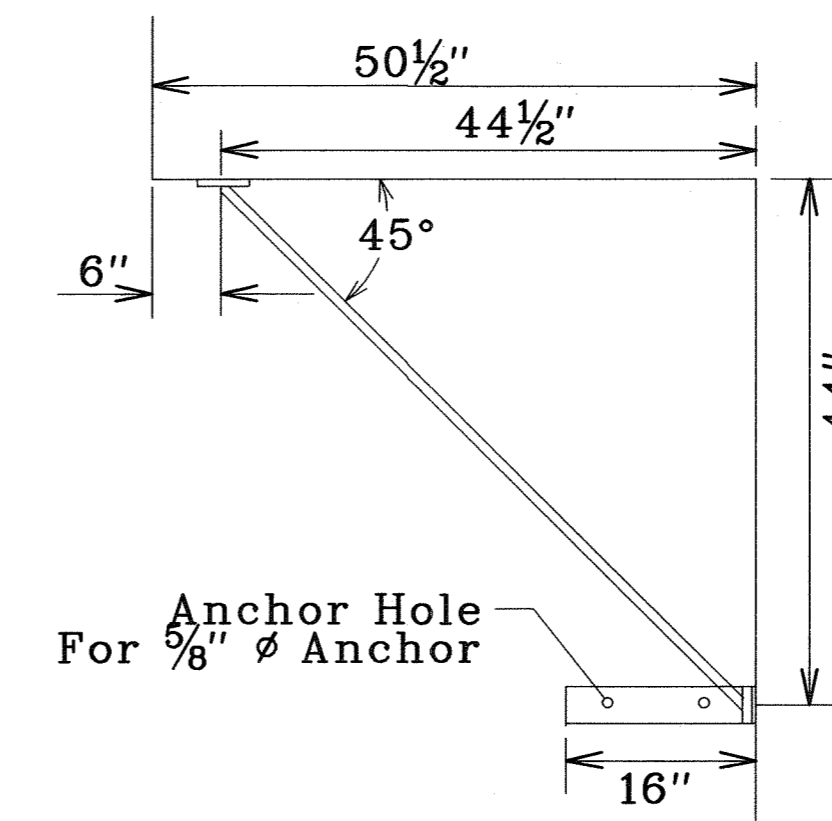


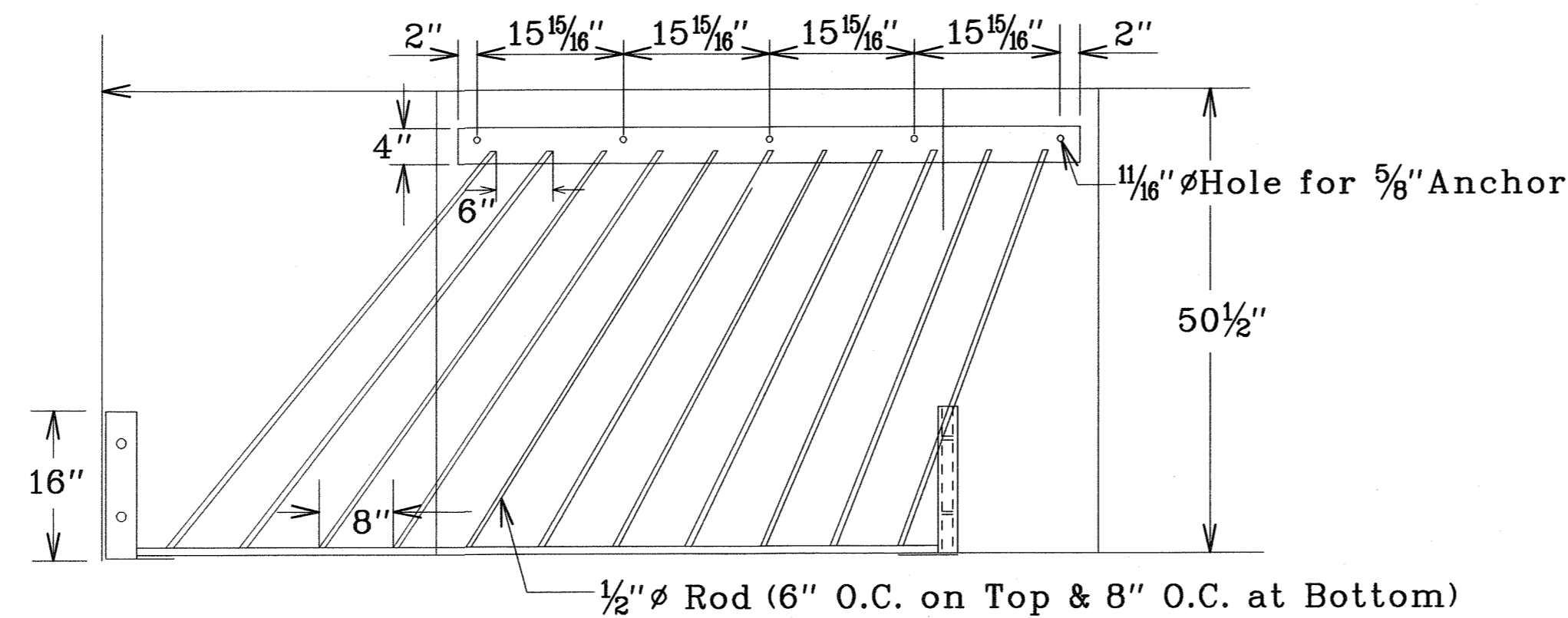
FED. ROAD DIST. NO.	STATE	PROJ. NO.	FISCAL YEAR	SHEET NO.	TOTAL SHEETS
HAWAII	HAW.	450B-01-05M	2005	ADD.8	35



PLAN



SECTION "A"



SECTION "B"

## DEBRIS RACK DETAIL

Not To Scale

LEGEND FOR AS-BUILT POSTINGS	
	Squiggly line for as-built deletion
	Double line for as-built deletion
Roadway	Text for as-built posting

Note:

1. All steel bars, anchor bolts and plates will be hot dip galvanized.

STATE OF HAWAII DEPARTMENT OF TRANSPORTATION HIGHWAYS DIVISION	
<b><u>DRAINAGE DETAILS</u></b>	
KAMEHAMEHA V HIGHWAY RESURFACING	
Waialua to Halawa Bay	
Project No. 450B-01-05M	
Scale: As Noted	Date: April, 2005
SHEET No. 1 OF 1 SHEETS	

ORIGINAL PLAN	SURVEY PLOTTED BY	DATE
NOTE BOOK	DRAWN BY	
450B-01-05M	TRACED BY	
450B-01-05M	CHECKED BY	
450B-01-05M	QUANTITIES BY	
450B-01-05M	CHECKED BY	

6-14-05 Revised drainage details.

DATE REVISION

"AS-BUILT"

ADD.8