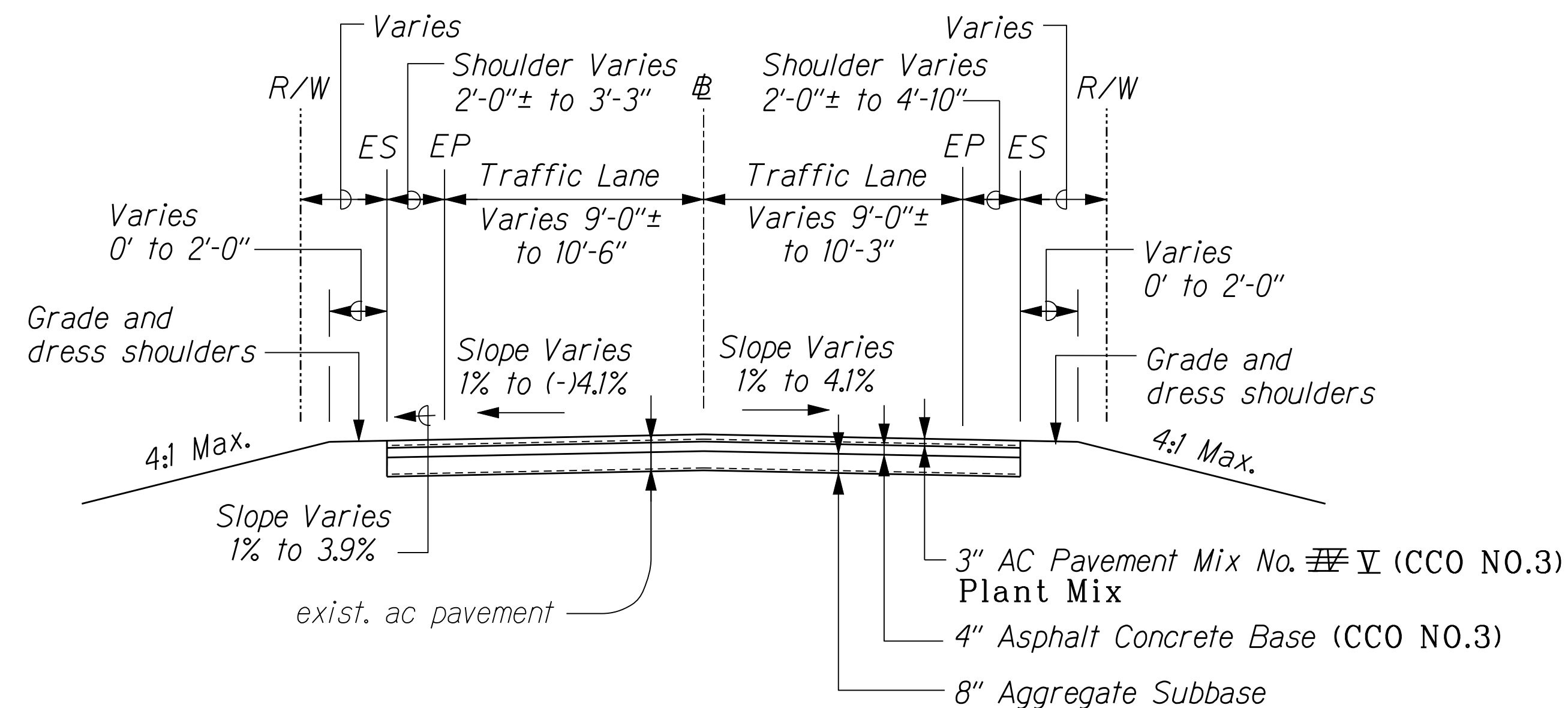
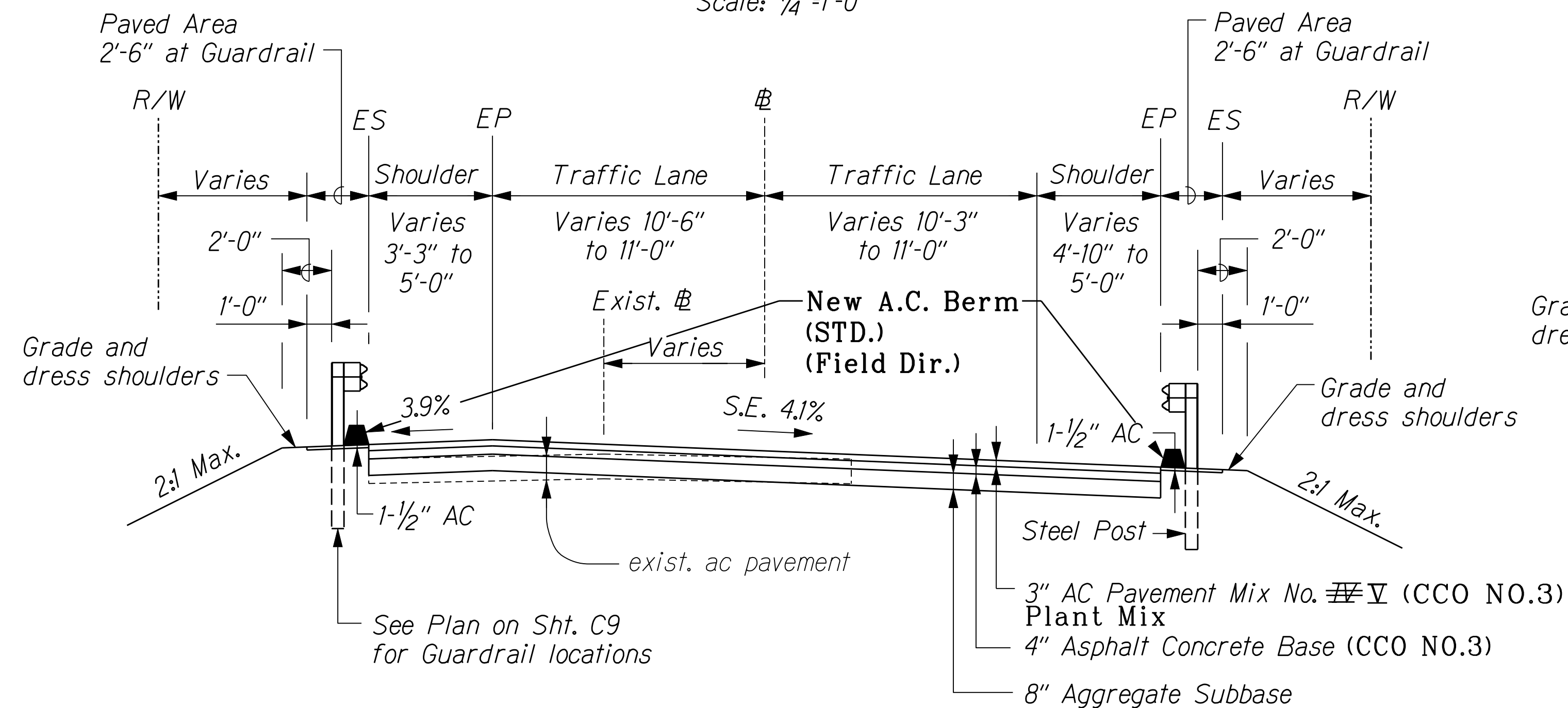


FED. ROAD DIST. NO.	STATE	FED. AID PROJ. NO.	FISCAL YEAR	SHEET NO.	TOTAL SHEETS
HAWAII	HAW.	ER-12(4)	2003	8	76



TRANSITION TYPICAL SECTION
STA. 200+50 TO STA. 202+97.39

Scale: 1/4"=1'-0"



TYPICAL SECTION

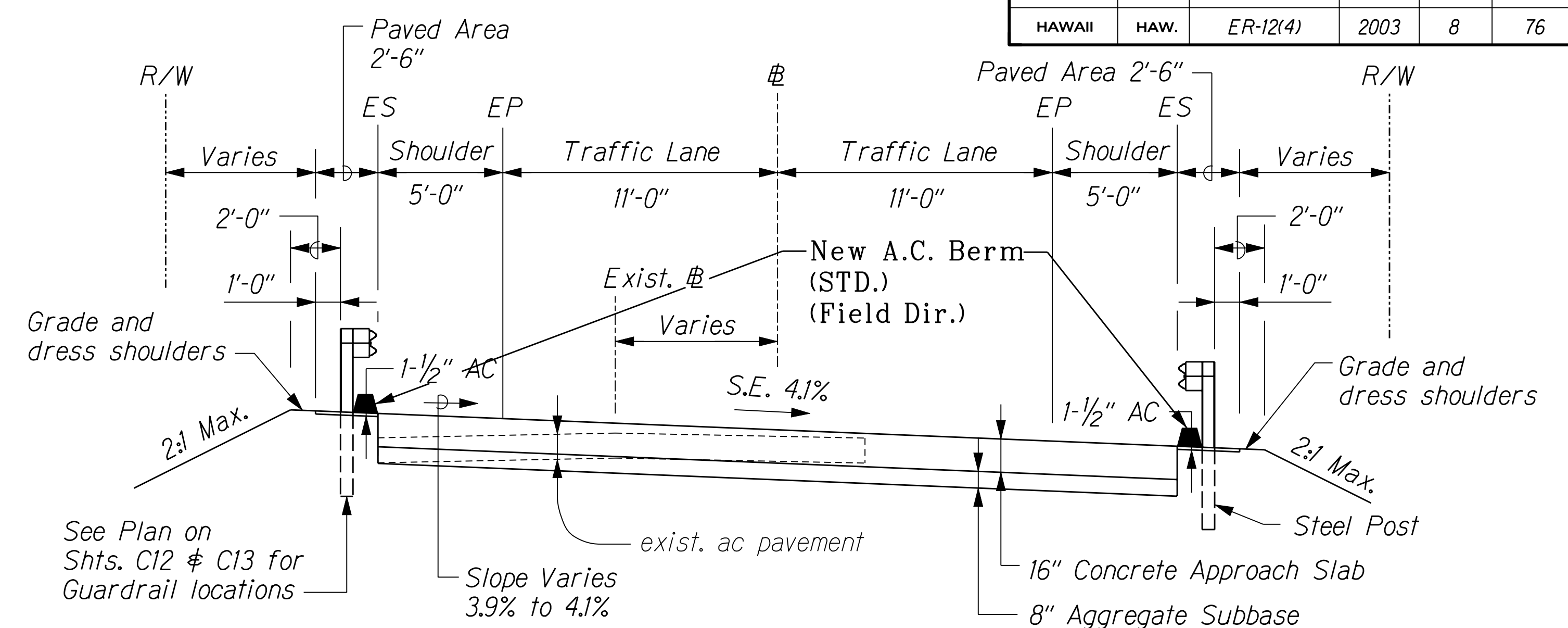
STA. 202+97.39 TO STA. 203+47.41

Scale: 1/4"=1'-0"

NOTES:

- All stationings are based on new Kamehameha V Highway Roadway Baseline.
- See Pavement Marking Plan Sht No. C31 for Traffic Lane and Shoulder widths.
- See Roadway Plan for pavement dimensions.
- Grading and dressing of shoulder shall be considered incidental to various contract items.

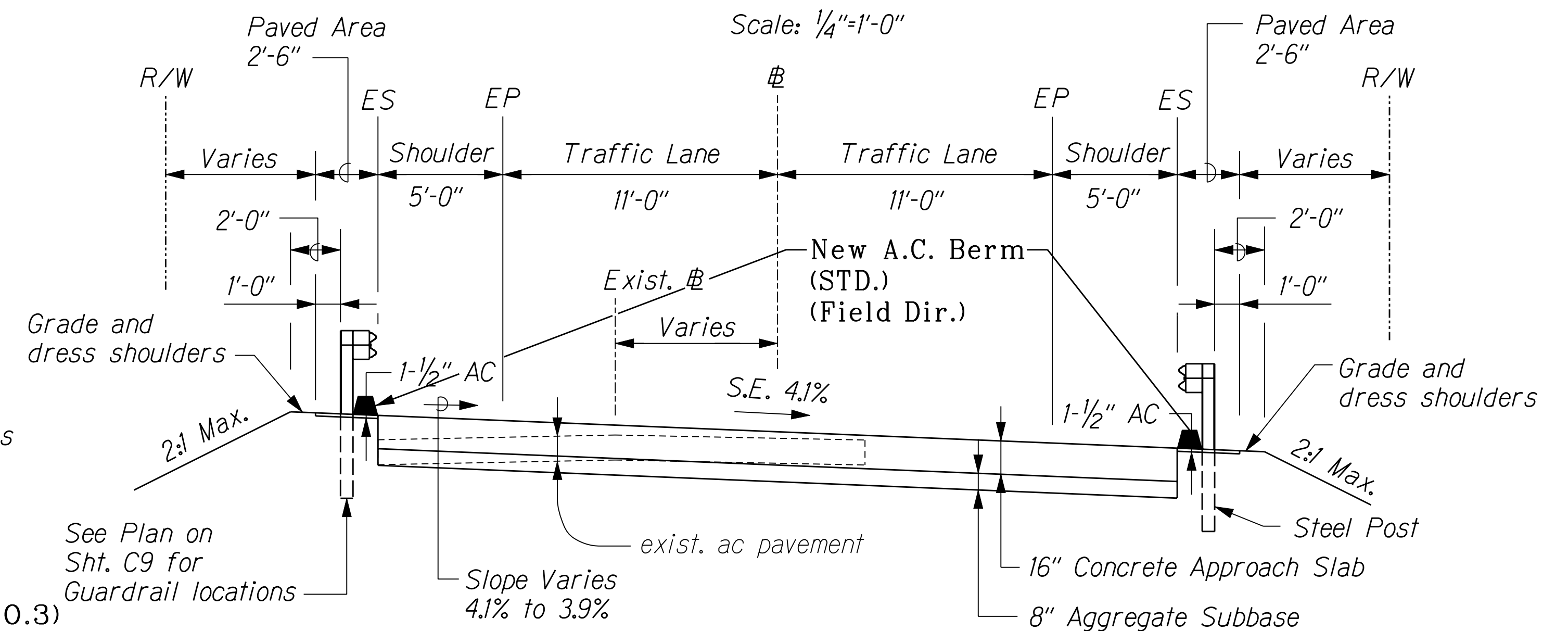
LEGEND FOR AS-BUILT POSTINGS	
	Squiggly line for as-built deletion
	Double line for as-built deletion
Roadway	Text for as-built posting



TYPICAL SECTION

STA. 203+47.41 TO STA. 203+67.41

Scale: 1/4"=1'-0"

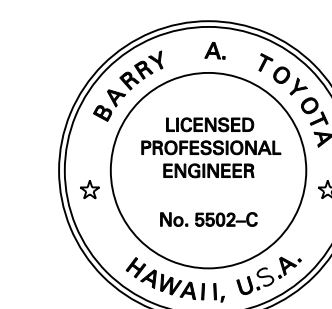


TYPICAL SECTION

STA. 204+31.57 TO STA. 204+51.57

Scale: 1/4"=1'-0"

Contract Change Order No.2 Remove "Unsuitable Material"		
Sta. to Sta.	Lt.	Rt.
202+08 - 202+20		
202+30 - 202+35		
202+40 - 202+50		
206+25 - 207+75		
206+25 - 207+75		

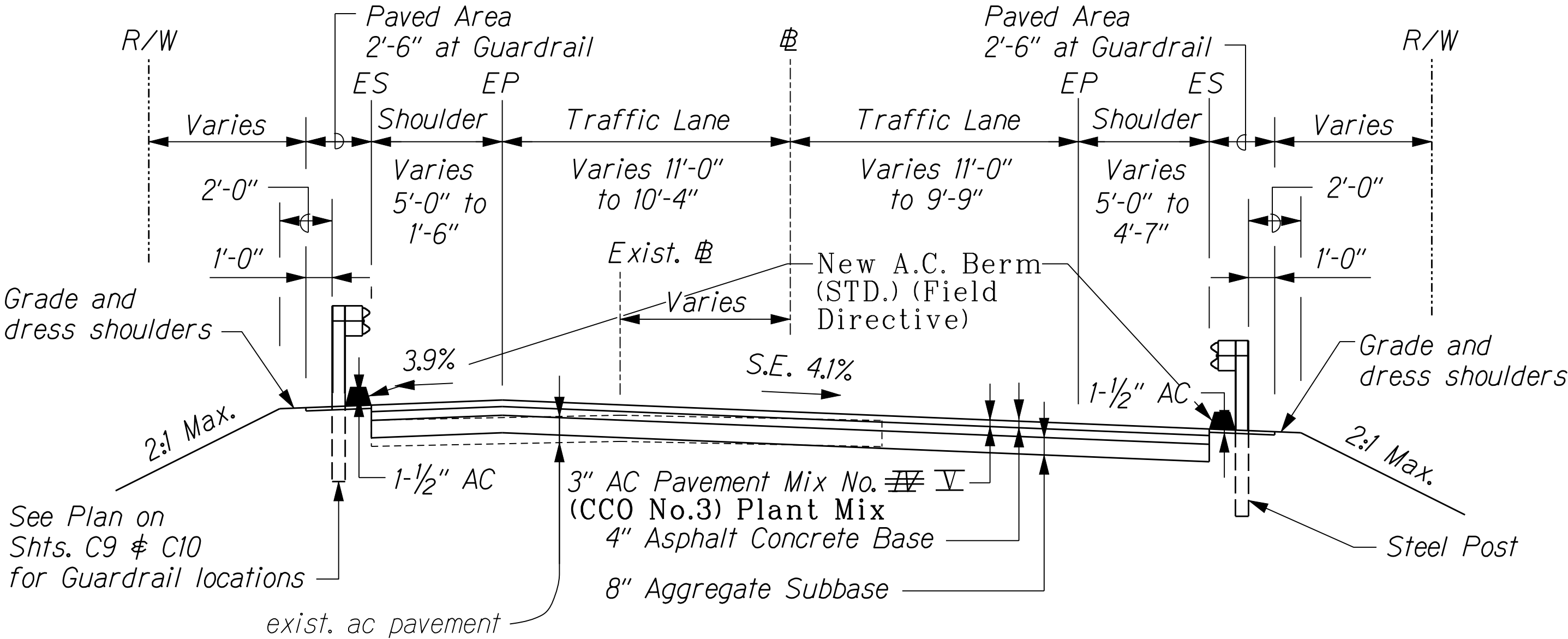


THIS WORK WAS PREPARED BY
ME OR UNDER MY SUPERVISION.
SIGNATURE
April 30, 2004
Expiration Date of the License

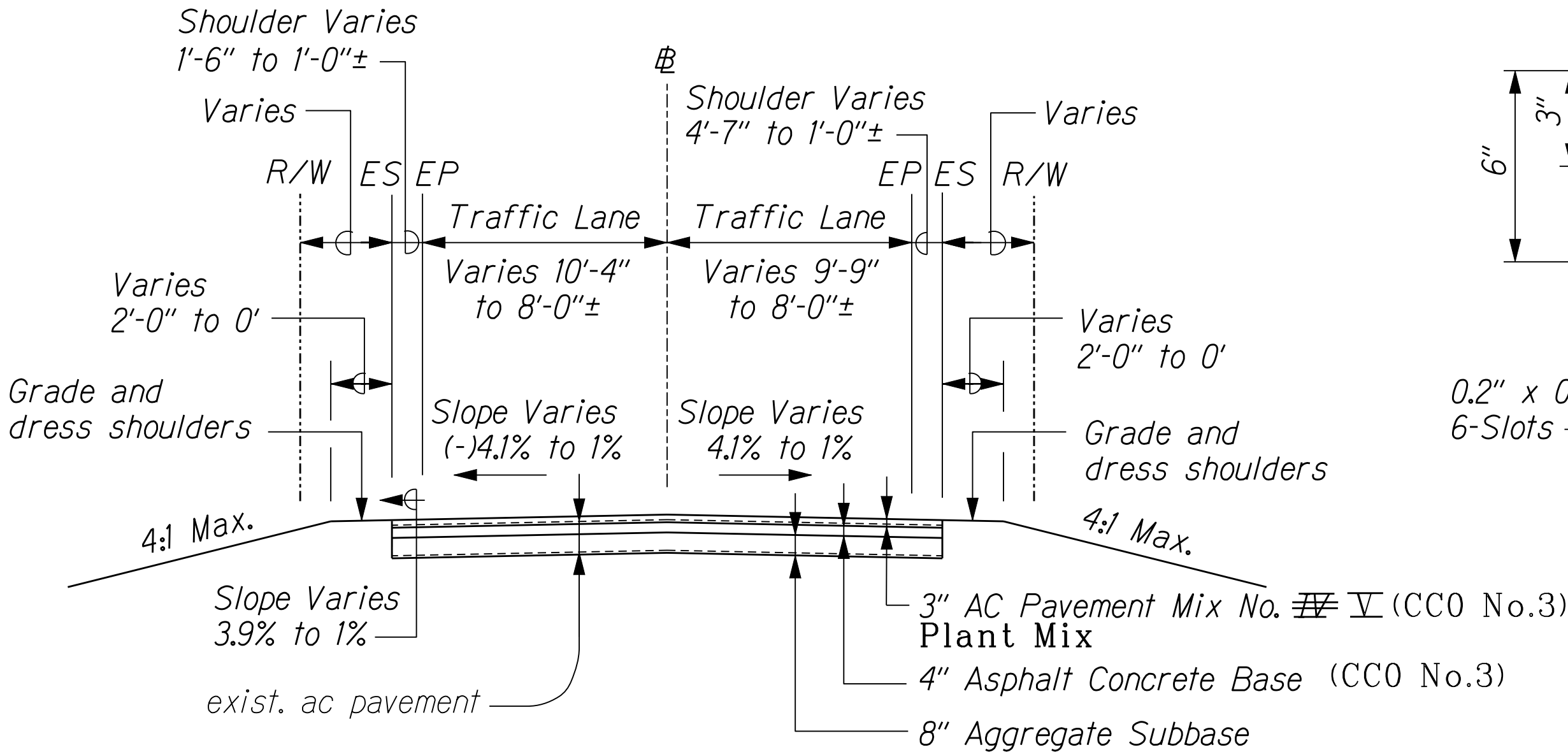
DATE	REVISION
STATE OF HAWAII DEPARTMENT OF TRANSPORTATION HIGHWAYS DIVISION	
TYPICAL SECTIONS & DETAILS	
KAMEHAMEHA V HIGHWAY EMERGENCY REPLACEMENT OF KAWAIKAPU BRIDGE FEDERAL AID PROJECT NO. ER-12(4)	
Scale: As Shown	Date: November 25, 2002
SHEET No. C5 OF 46 SHEETS	

"AS-BUILT"

FED. ROAD DIST. NO.	STATE	FED. AID PROJ. NO.	FISCAL YEAR	SHEET NO.	TOTAL SHEETS
HAWAII	HAW.	ER-12(4)	2003	9	76



TYPICAL SECTION
STA. 204+51.57 TO STA. 205+18.93
 Scale: 1/4"=1'-0"

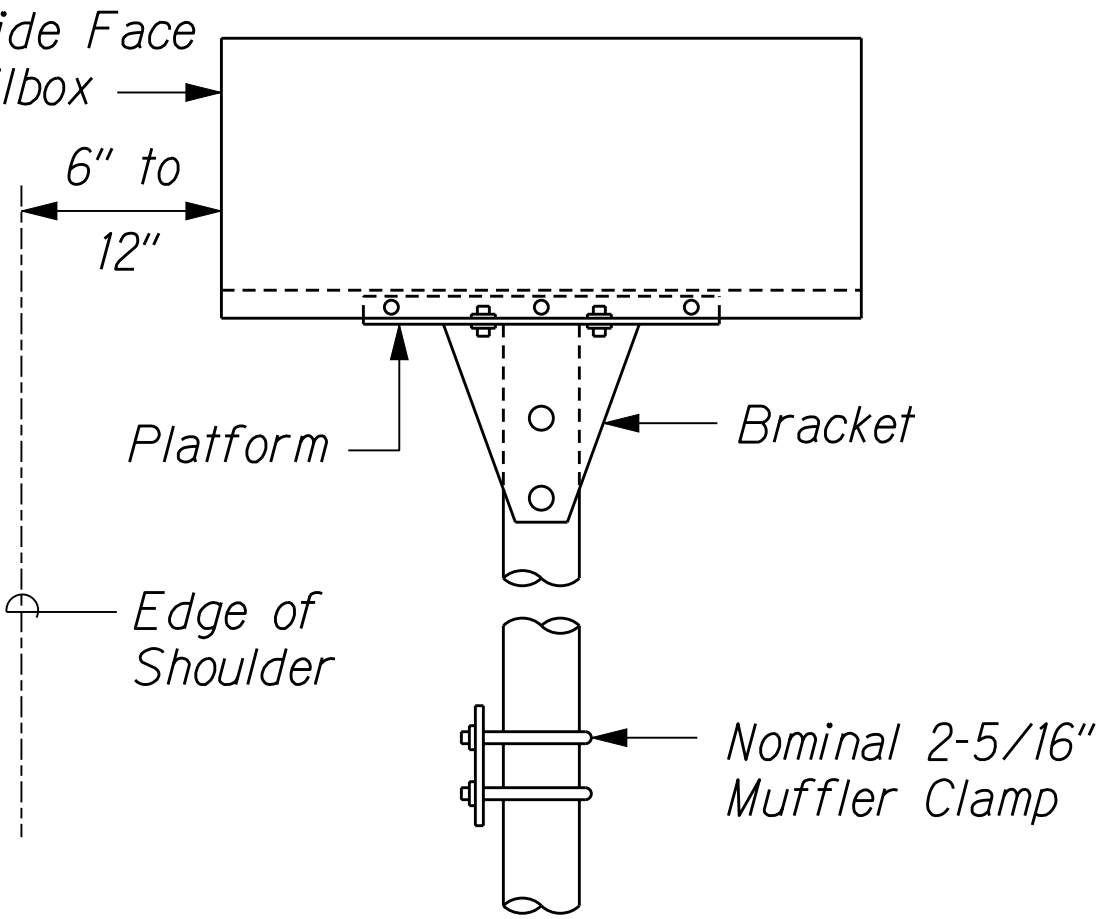
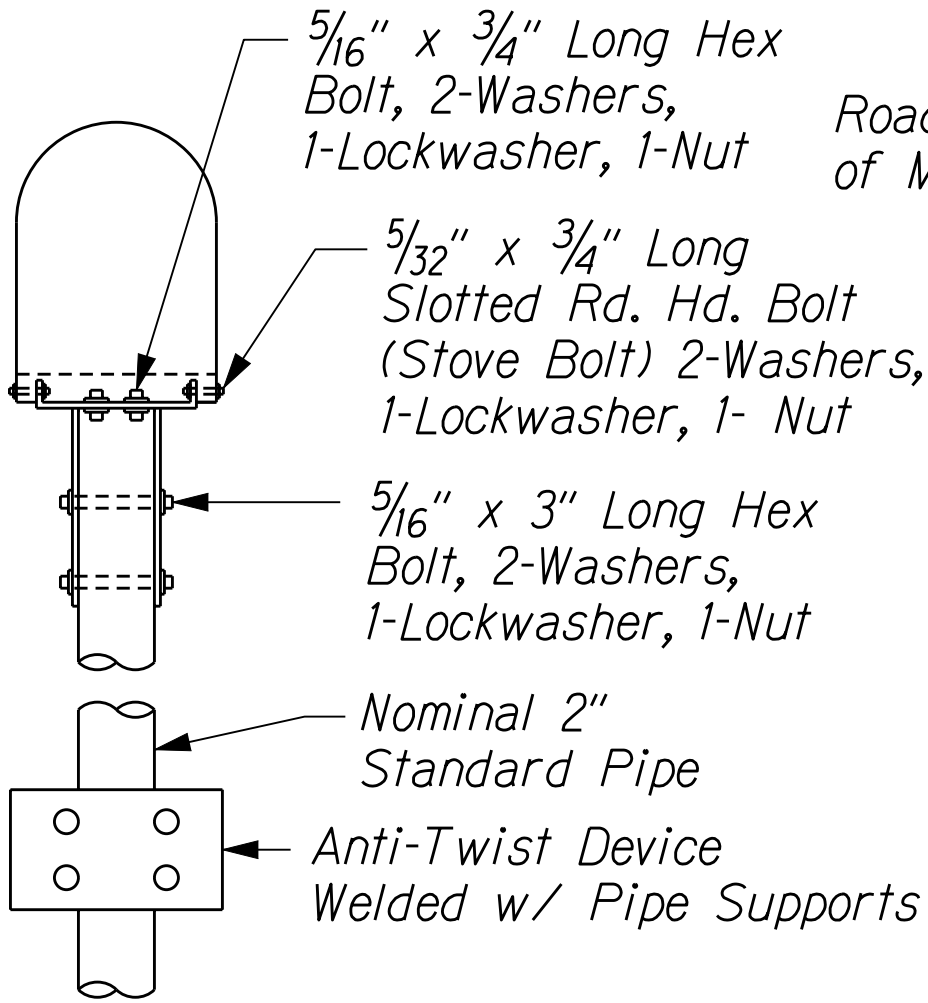
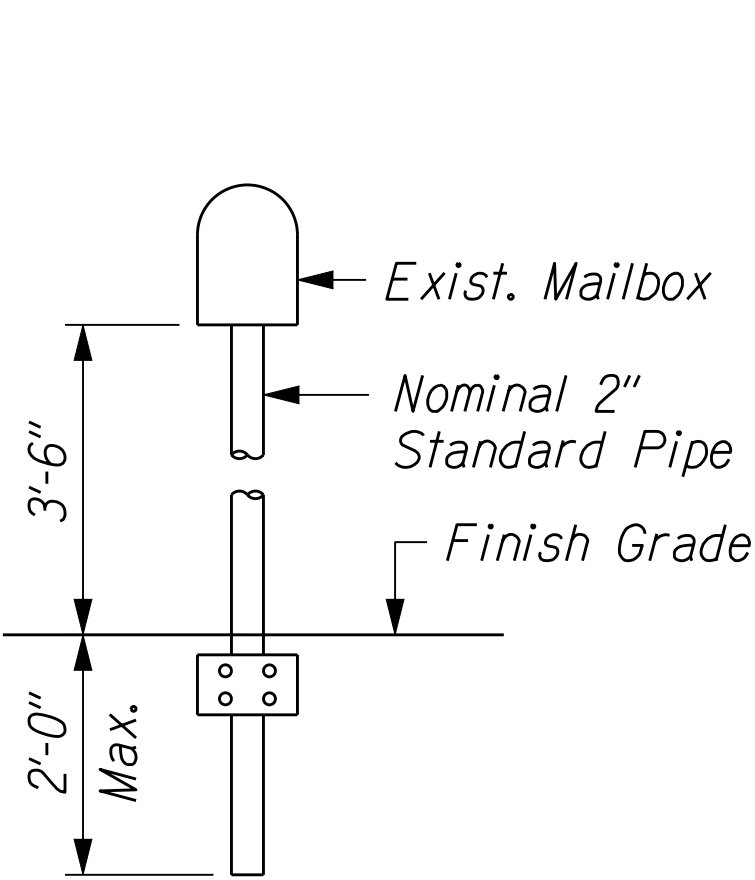


TRANSITION TYPICAL SECTION
STA. 205+18.93 TO STA. 207+72
 Scale: 1/4"=1'-0"

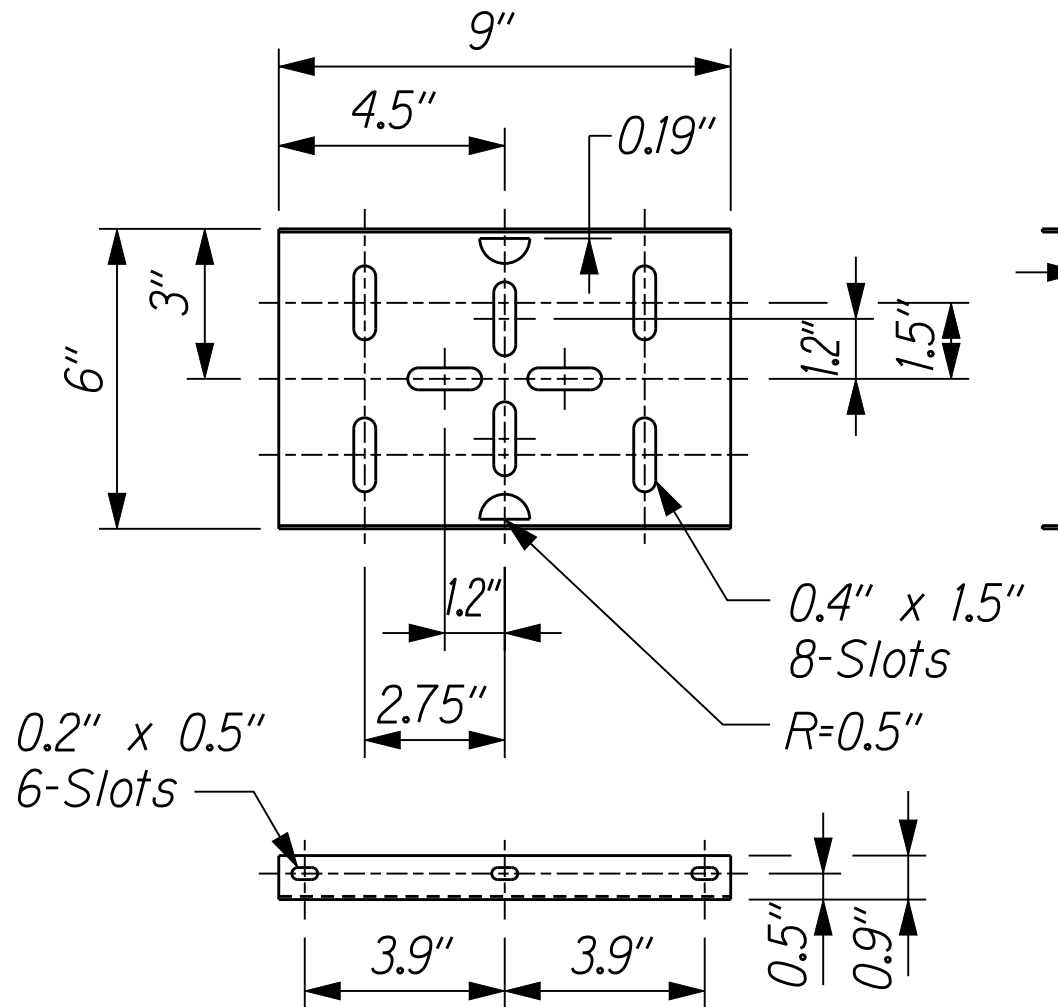
NOTES:

- All stationings are based on new Kamehameha V Highway Roadway Baseline.
- See Pavement Marking Plan Sht No. C31 for Traffic Lane and Shoulder widths.
- See Roadway Plan for pavement dimensions.
- Grading and dressing of shoulder shall be considered incidental to various contract items.

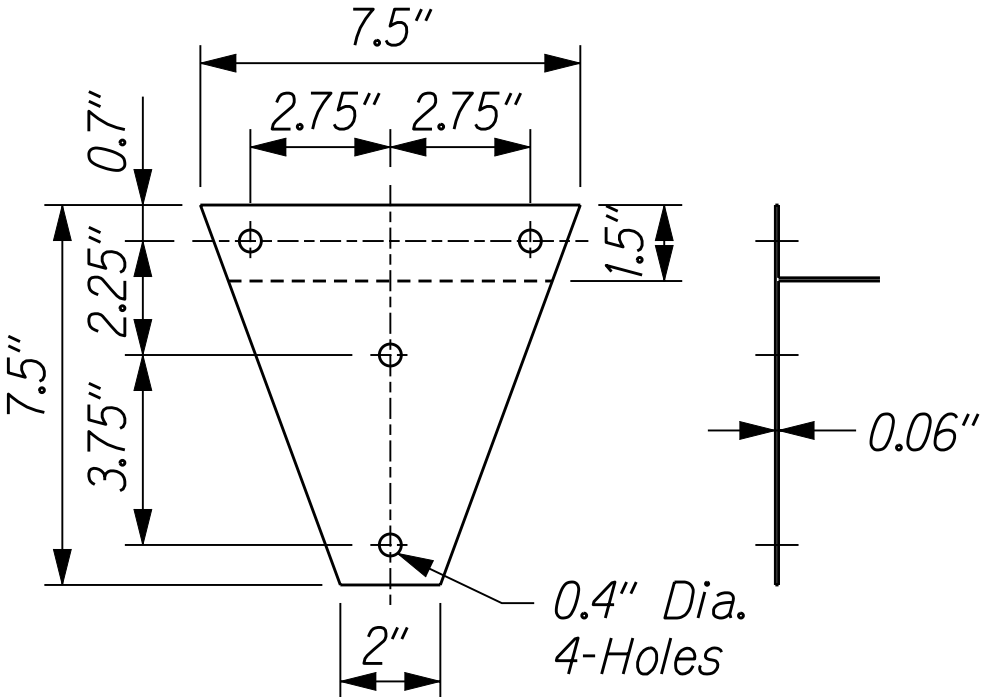
LEGEND FOR AS-BUILT POSTINGS	
	Squiggly line for as-built deletion
	Double line for as-built deletion
Roadway	Text for as-built posting



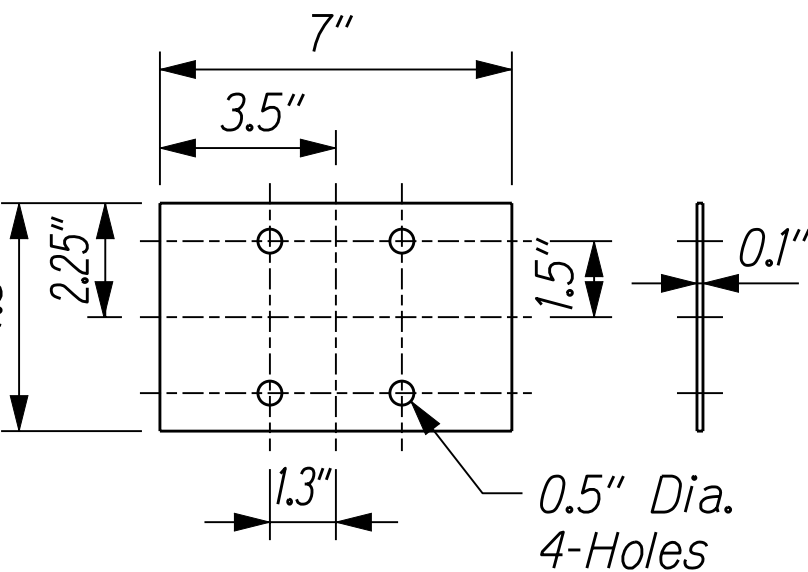
SINGLE MAILBOX ASSEMBLY
 Not to Scale



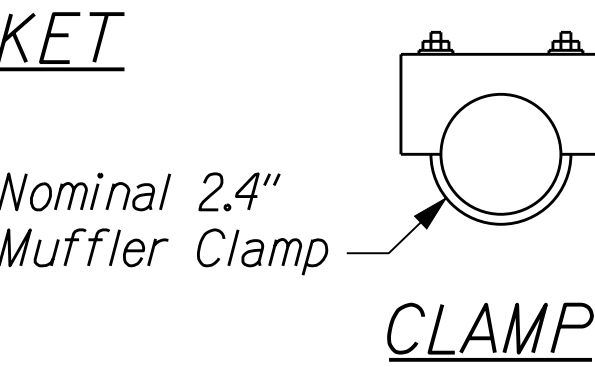
PLATFORM



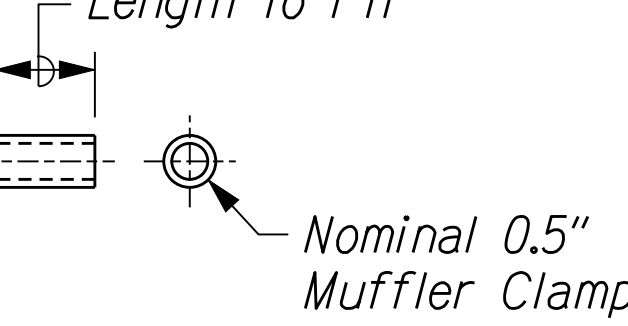
BRACKET



ANTI-TWIST PLATE

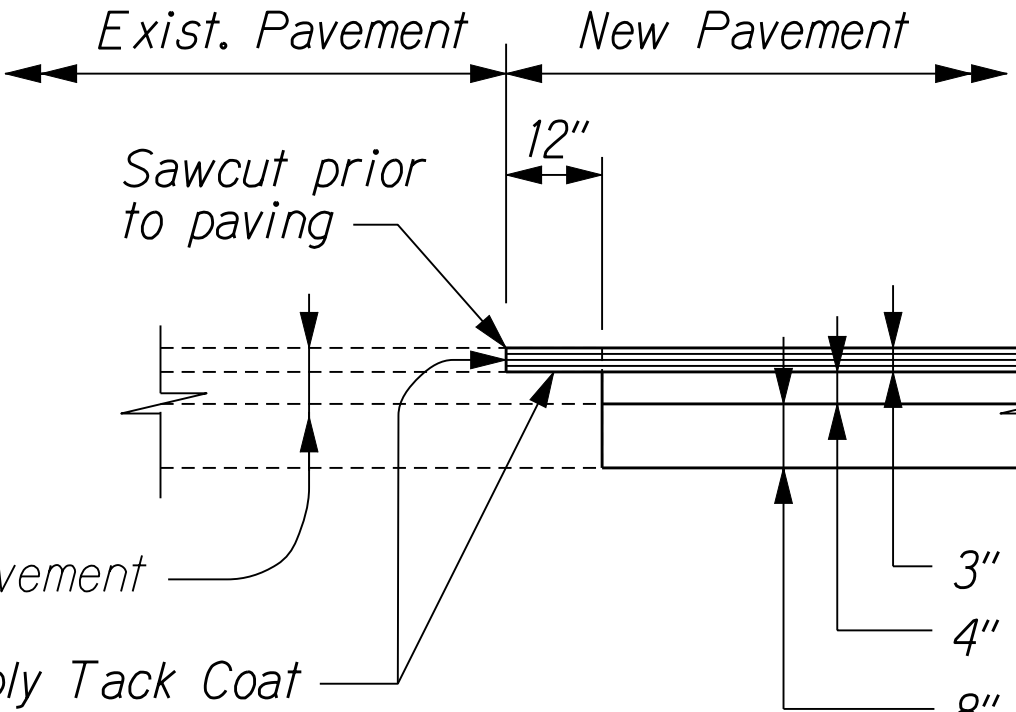


CLAMP



SPACER

MAILBOX SUPPORT HARDWARE
 Not to Scale

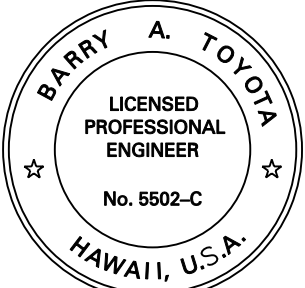


PAVEMENT CONNECTION DETAIL
 Not to Scale

Note: Mailboxes installed were five (5). Pre-fabricated, poly heavy duty MAILMASTER model 5330, brochures submitted.

DATE	REVISION
STATE OF HAWAII DEPARTMENT OF TRANSPORTATION HIGHWAYS DIVISION	
TYPICAL SECTIONS & DETAILS	
KAMEHAMEHA V HIGHWAY EMERGENCY REPLACEMENT OF KAWAIKAPU BRIDGE FEDERAL AID PROJECT NO. ER-12(4)	
Scale: As Shown	Date: November 25, 2002
SHEET No. C6 OF 46 SHEETS	

DESIGNED BY	DATE
DRAWN BY	
CHECKED BY	
NOTED BY	
QUANTITIES BY	
REVISIONS	



THIS WORK WAS PREPARED BY
 ME OR UNDER MY SUPERVISION.
 SIGNATURE
 April 30, 2004
 Expiration Date of the License