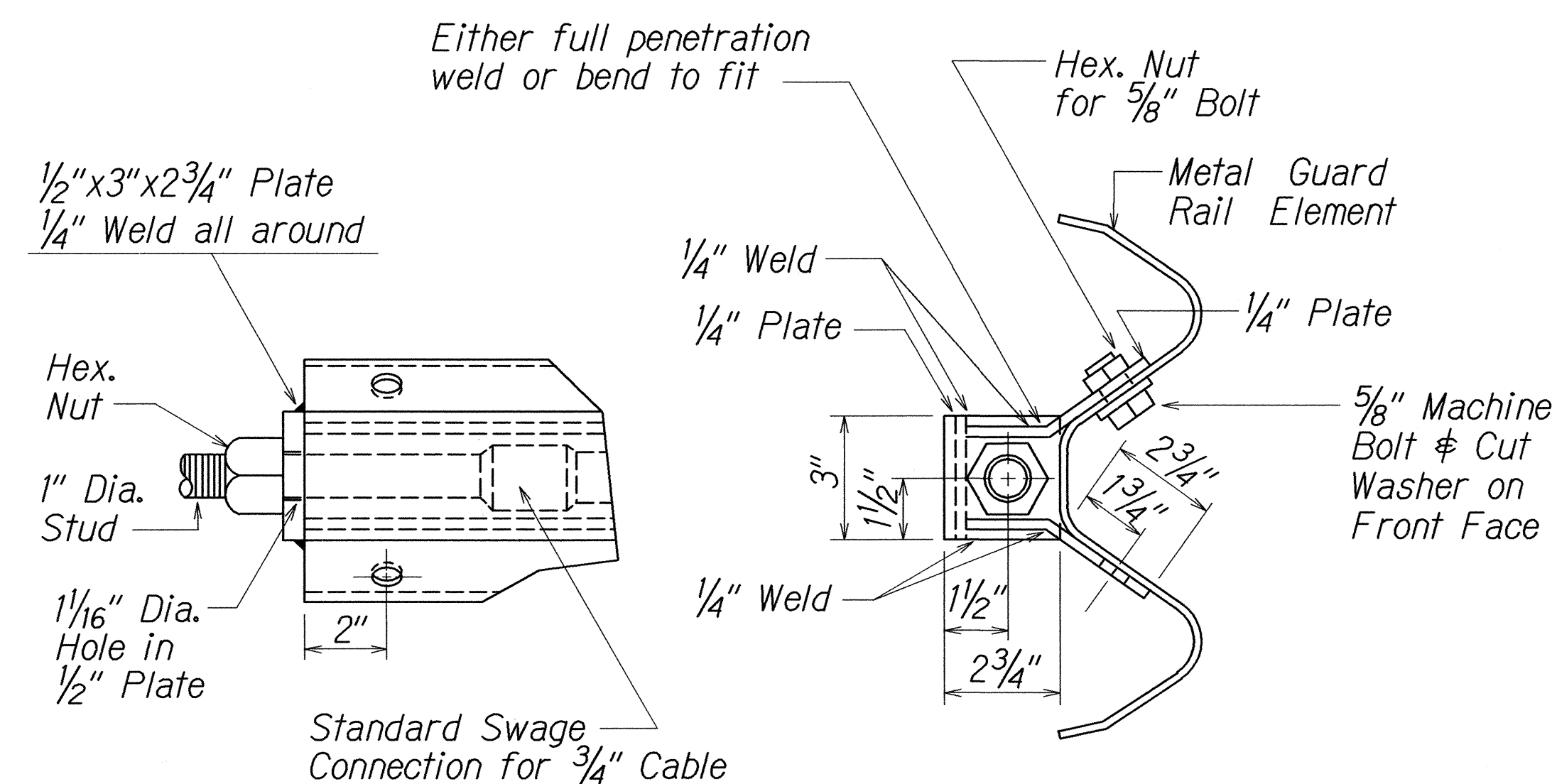
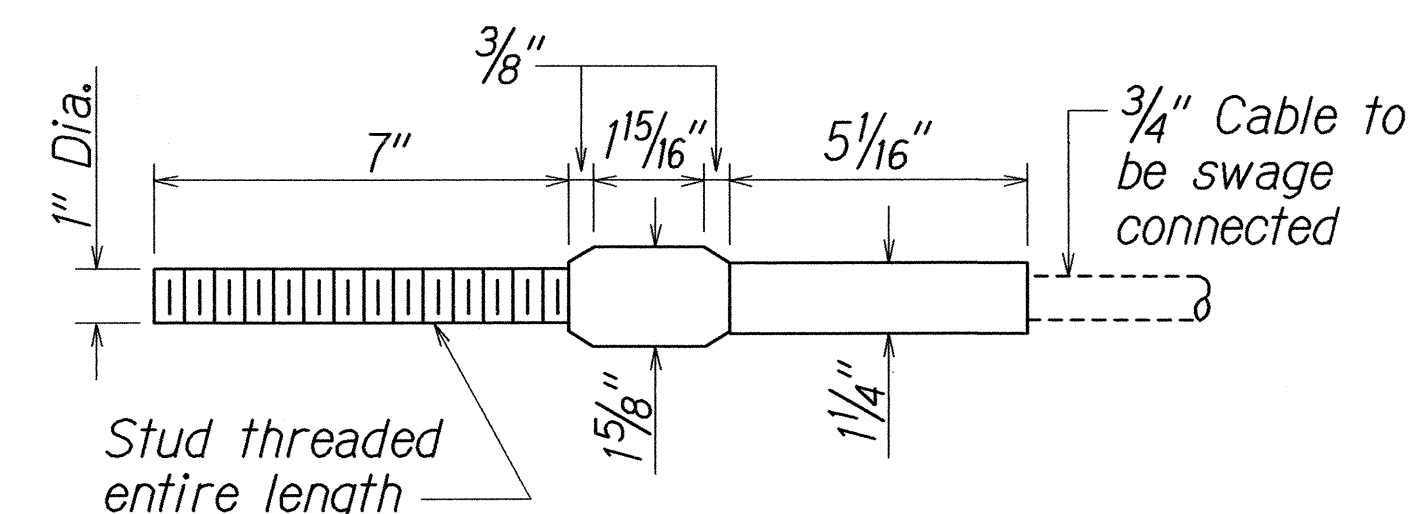


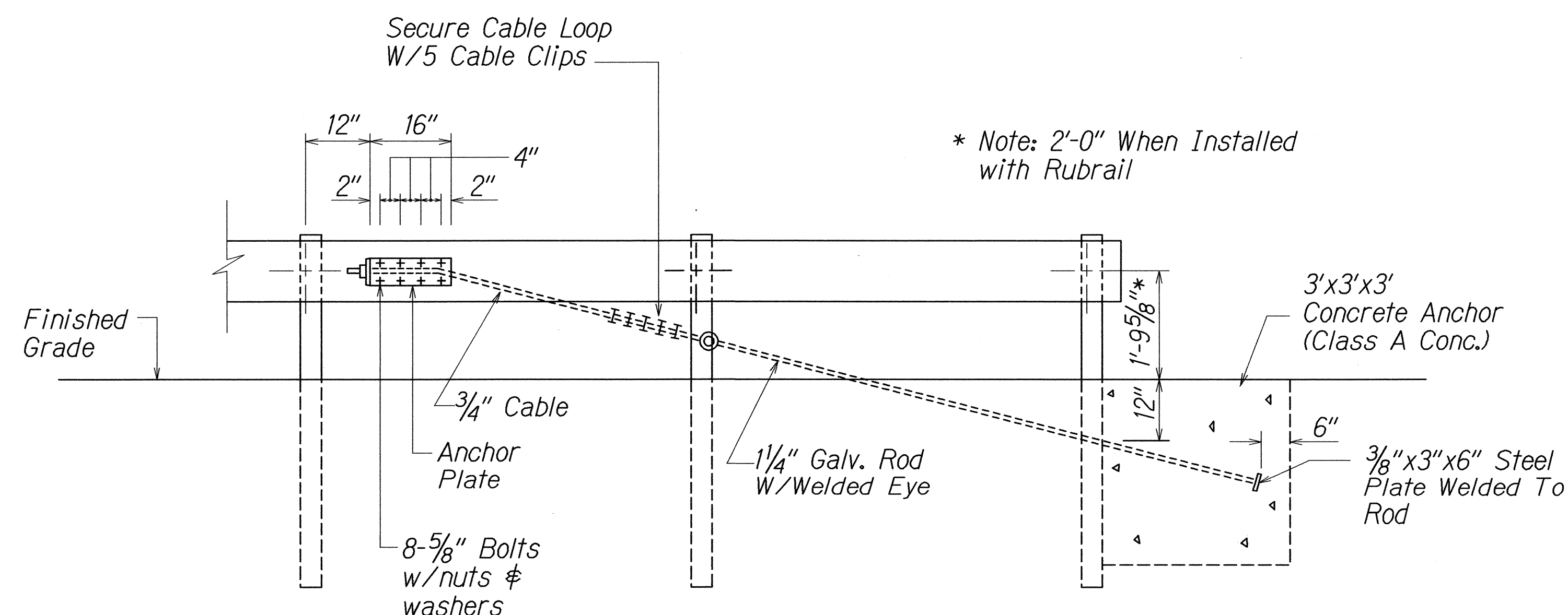
FED. ROAD DIST. NO.	STATE	FED. AID PROJ. NO.	FISCAL YEAR	SHEET NO.	TOTAL SHEETS
HAWAII	HAW.	ER-12(4)	2003	46	76



ANCHOR PLATE DETAILS

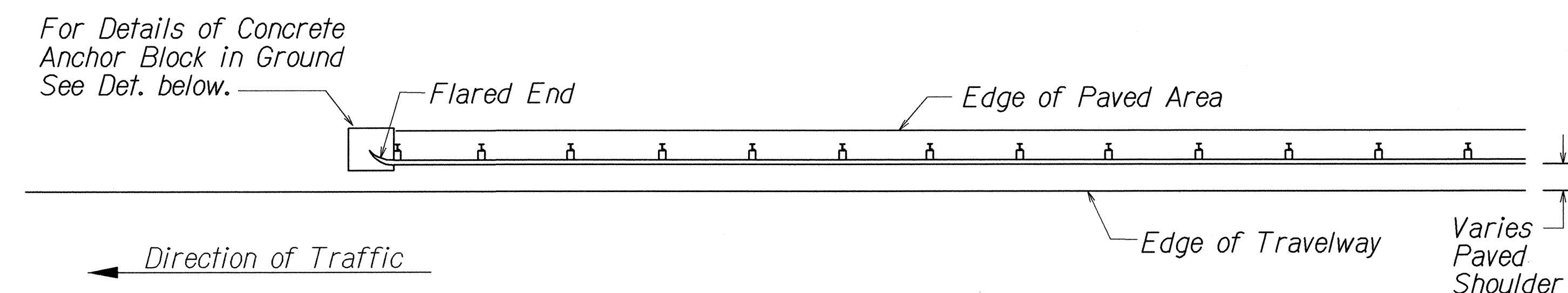


STANDARD SWAGED FITTING AND STUD

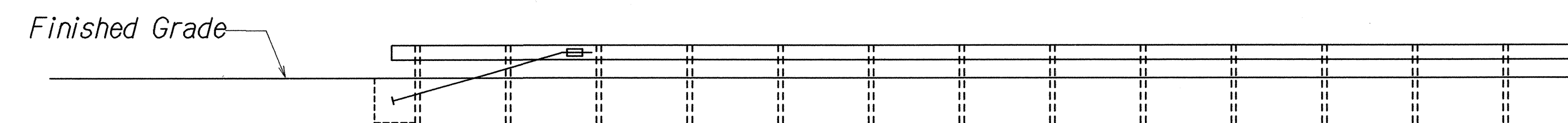


ANCHOR BLOCK DETAIL

- Concrete, G.R.P., excavation, anchor rod and miscellaneous appurtenances necessary to anchor the guardrail ends shall be incidental to metal guardrail.



PLAN



ELEVATION

TYPE "G" FLARE END TERMINAL

NOTE:

Type "G" Modified End Terminal is a site specific end terminal with a taper and radial termini. A site specific detailed drawing is required for all Type "G" Modified End Terminal and must receive Engineer's approval.

The taper (flare rate) of the guardrail shall follow the latest edition of AASHTO'S Roadside Design Guide (currently, Table 5.6 - Suggested Flare Rate for Barrier Design, page 5-21, Jan. 1996 edition).

The radius of the radial termini is an Engineer's judgement based on the site evaluation. The Engineer shall consider safety (minimize the spearing & blunt end situation); degree and potential seriousness of the hazard; bicycle and pedestrian accessibility; maintenance equipment accessibility; Right-of-Way availability; the smallest radii the metal w-beam/thrie-beam railing can be constructed (check with supplier/contractor); posted speed limit; angle of vehicle impact; and aesthetics when designing the Type "G" Modified End Terminal.

During construction, the Contractor shall layout the proposed Type "G" Modified End Terminal and receive approval from the Construction Engineer prior to installation.

SURVEY PLOTTED BY	DATE
DRAWN BY	
DESIGNED BY	
QUANTITIES BY	
CHECKED BY	
ORIGINAL PLAN	
NOTE BOOK	
N.	

DATE	REVISION
STATE OF HAWAII DEPARTMENT OF TRANSPORTATION HIGHWAYS DIVISION TYPE "G" FLARED END TERMINAL KAMEHAMEHA V HIGHWAY EMERGENCY REPLACEMENT OF KAWAIKAPU BRIDGE FEDERAL AID PROJECT NO. ER-12(4) Scale: Not to Scale Date: November 25, 2002	