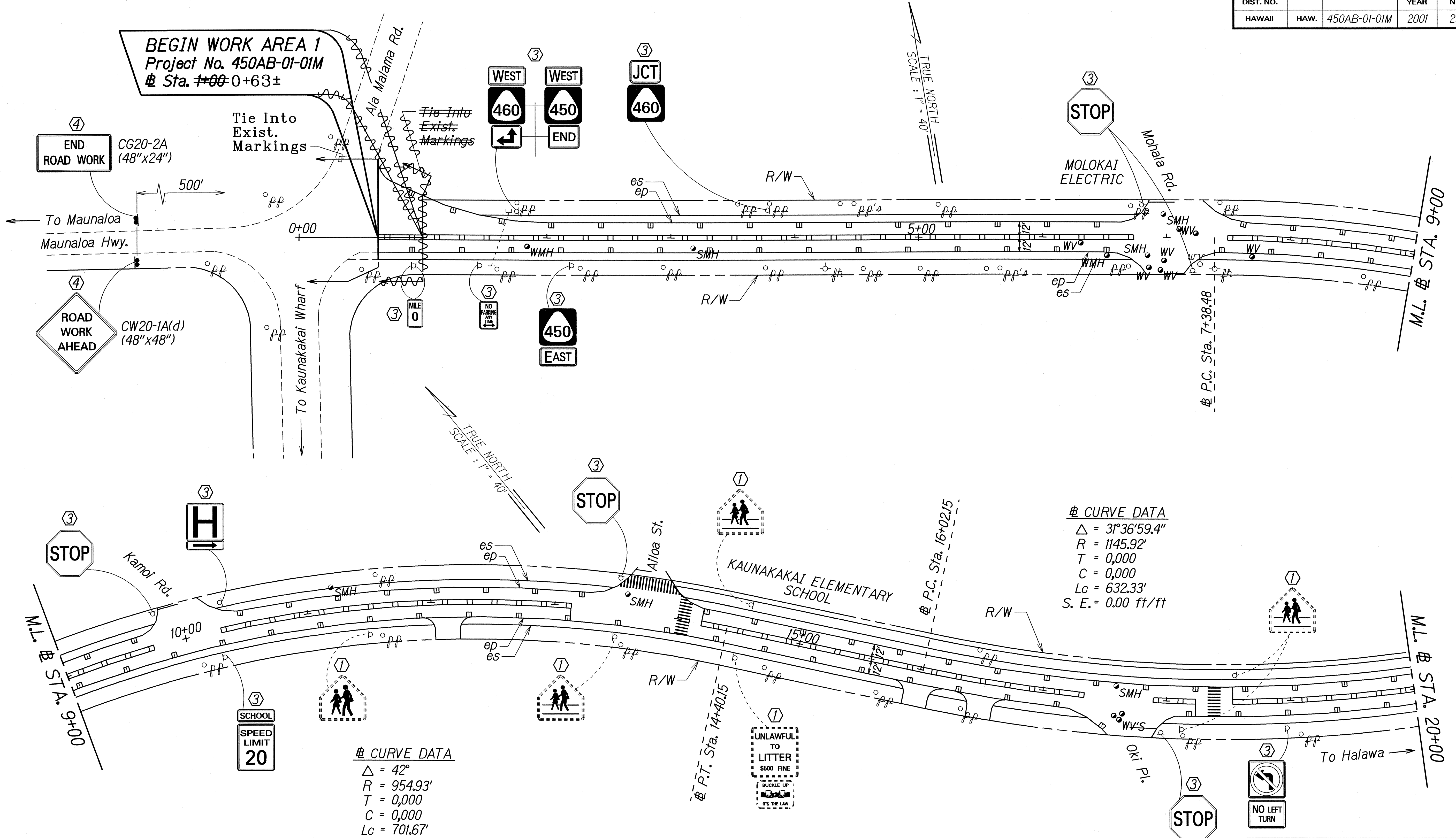


FED. ROAD DIST. NO.	STATE	PROJ. NO.	FISCAL YEAR	SHEET NO.	TOTAL SHEETS
HAWAII	HAW.	450AB-01-01M	2001	23	42



DATE: Aug. 01
 SURVEY PLOTTED BY: []
 DRAWN BY: []
 TRACED BY: []
 DESIGNED BY: []
 CHECKED BY: []

LEGEND FOR AS-BUILT POSTINGS

	Squiggly line for as-built deletion
	Double line for as-built deletion
Roadway	Text for as-built posting

- KEY:**
- ① Exist. Sign(s) & Post(s) to Remain
 - ② Relocate Exist. Sign(s) & Post(s)
 - ③ Remove Exist. & Install New Sign(s) & Post(s)
 - ④ Install New Sign(s) & Post(s)

STATE OF HAWAII
 DEPARTMENT OF TRANSPORTATION
 HIGHWAYS DIVISION

SIGNING & PAVEMENT MARKING PLAN

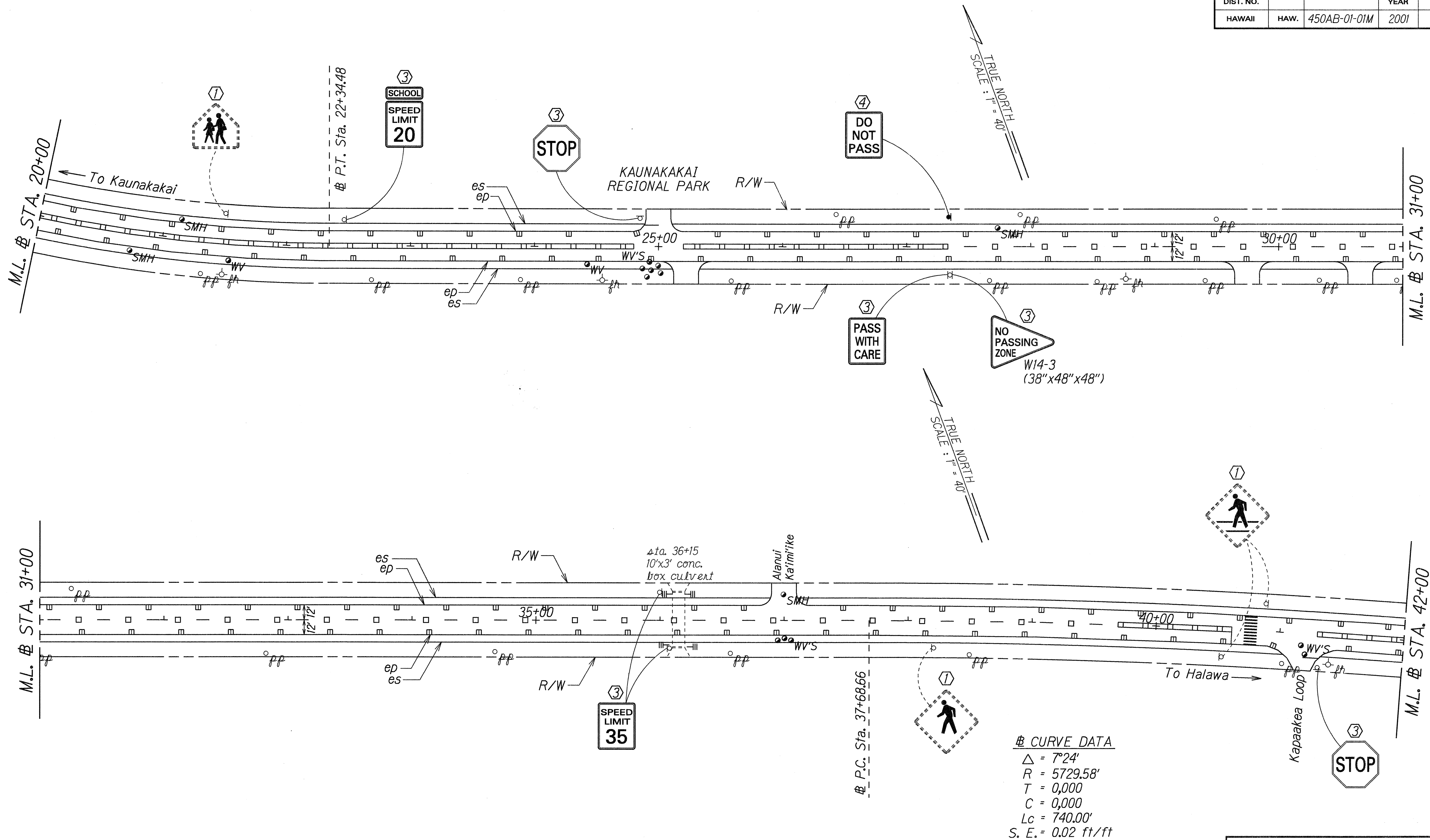
KAMEHAMEHA V HIGHWAY RESURFACING
 Kaunakakai to Kamiloloa Bridge
 and Kapuokoolau to Kamalo
 Project No. 450AB-01-01M

Scale: 1" = 40' Date: August, 2000

SHEET No. 1 OF 16 SHEETS

"AS-BUILT"

FED. ROAD DIST. NO.	STATE	PROJ. NO.	FISCAL YEAR	SHEET NO.	TOTAL SHEETS
HAWAII	HAW.	450AB-01-01M	2001	24	42



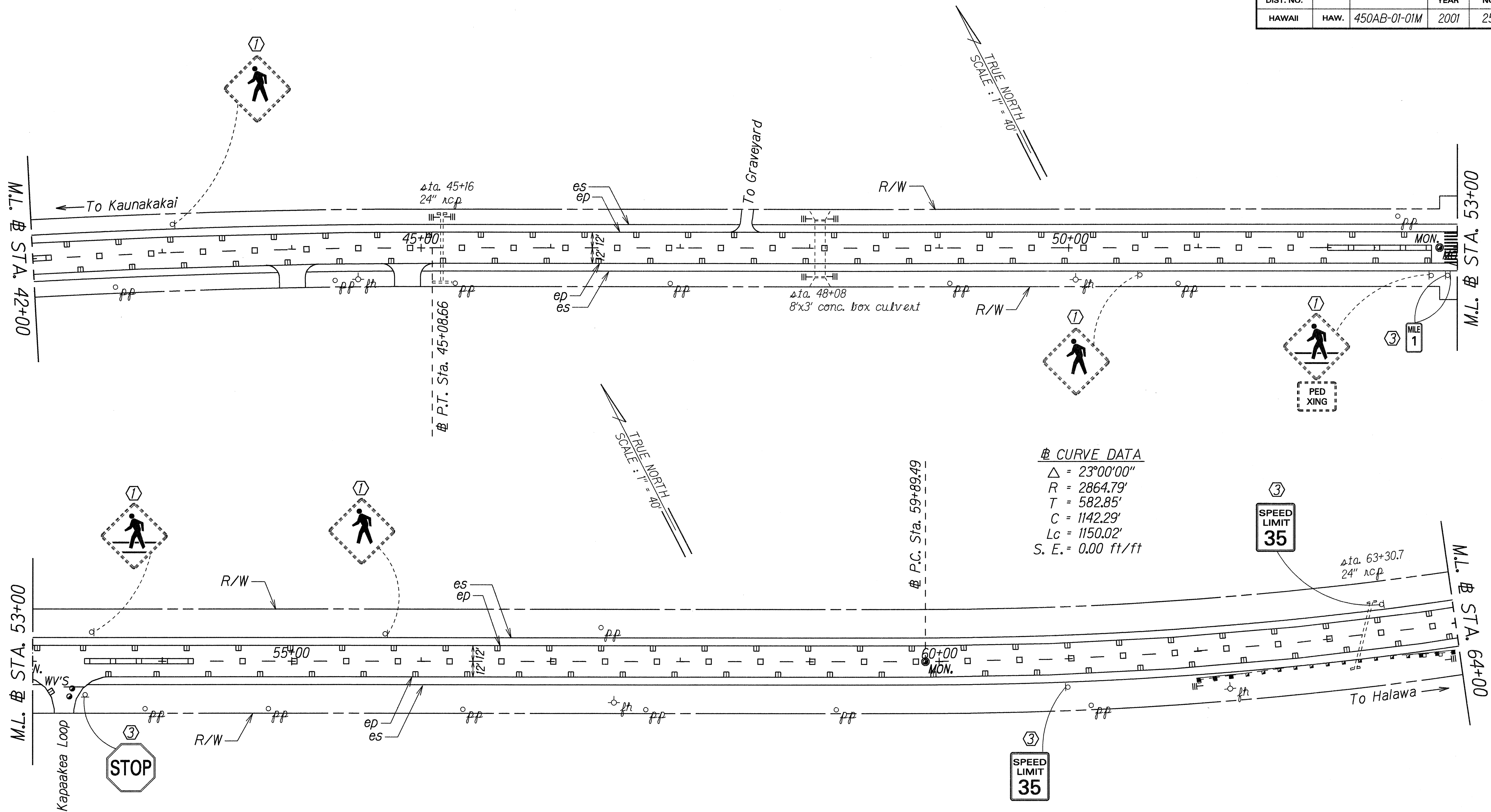
CURVE DATA
 $\Delta = 7^{\circ}24'$
 $R = 5729.58'$
 $T = 0,000$
 $C = 0,000$
 $Lc = 740.00'$
 $S. E. = 0.02 \text{ ft/ft}$

- KEY:
- ① Exist. Sign(s) & Post(s) to Remain
 - ② Relocate Exist. Sign(s) & Post(s)
 - ③ Remove Exist. & Install New Sign(s) & Post(s)
 - ④ Install New Sign(s) & Post(s)

STATE OF HAWAII
DEPARTMENT OF TRANSPORTATION
HIGHWAYS DIVISION
**SIGNING & PAVEMENT
MARKING PLAN**
KAMEHAMEHA V HIGHWAY RESURFACING
Kaunakakai to Kamiloloa Bridge
and Kapuokoolau to Kamalo
Project No. 450AB-01-01M
Scale: 1" = 40' Date: August, 2000

DESIGNED BY	DATE
TRACED BY	AUG. 00
DESIGNED BY	
QUANTITIES BY	
CHECKED BY	

FED. ROAD DIST. NO.	STATE	PROJ. NO.	FISCAL YEAR	SHEET NO.	TOTAL SHEETS
HAWAII	HAW.	450AB-01-01M	2001	25	42



DESIGNED BY	DATE
DRAWN BY	Aug. 00
TRACED BY	
DESIGNED BY	
QUANTITIES BY	
CHECKED BY	

- KEY:**
- ① Exist. Sign(s) & Post(s) to Remain
 - ② Relocate Exist. Sign(s) & Post(s)
 - ③ Remove Exist. & Install New Sign(s) & Post(s)
 - ④ Install New Sign(s) & Post(s)

STATE OF HAWAII
DEPARTMENT OF TRANSPORTATION
HIGHWAYS DIVISION

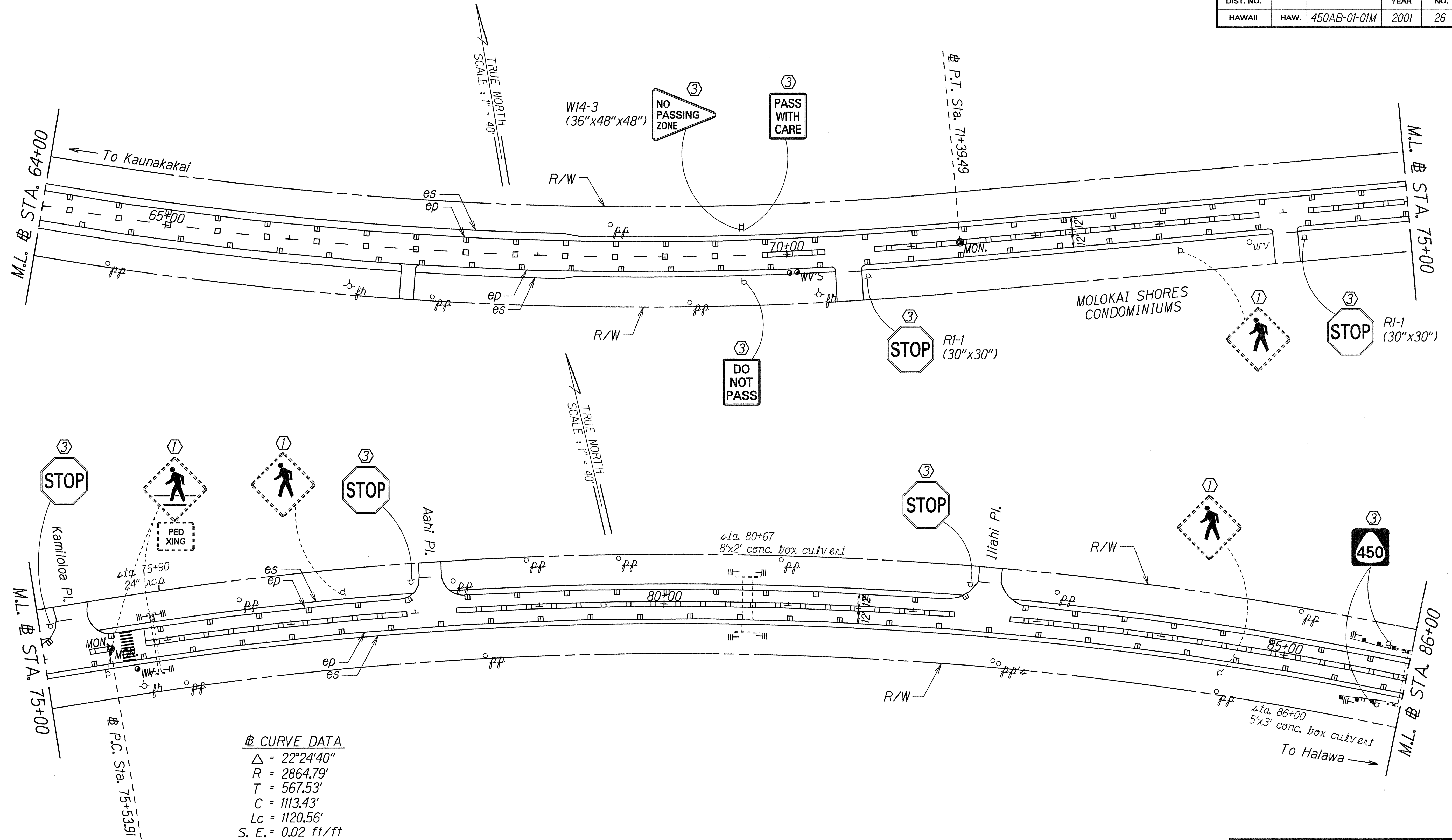
**SIGNING & PAVEMENT
MARKING PLAN**

KAMEHAMEHA V HIGHWAY RESURFACING
Kaunakakai to Kamiloloa Bridge
and Kapuokoolau to Kamalo
Project No. 450AB-01-01M

Scale: 1" = 40' Date: August, 2000

SHEET No. 3 OF 16 SHEETS

FED. ROAD DIST. NO.	STATE	PROJ. NO.	FISCAL YEAR	SHEET NO.	TOTAL SHEETS
HAWAII	HAW.	450AB-01-01M	2001	26	42



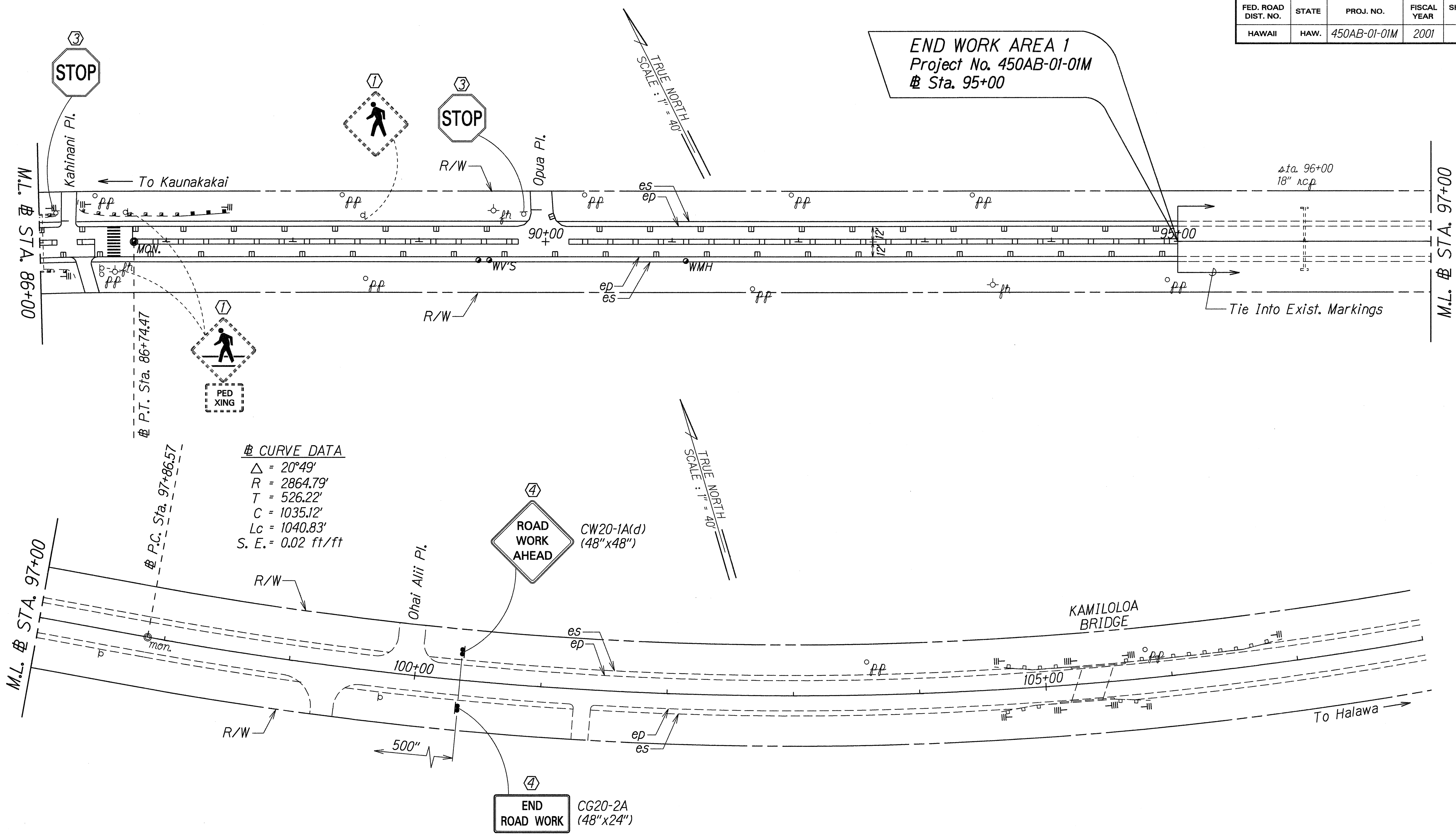
⊕ CURVE DATA
 $\Delta = 22^\circ 24' 40''$
 $R = 2864.79'$
 $T = 567.53'$
 $C = 1113.43'$
 $Lc = 1120.56'$
 $S. E. = 0.02 \text{ ft/ft}$

DESIGNED BY	DATE
DRAWN BY	Aug. 00
TRACED BY	
DESIGNED BY	
QUANTITIES BY	
CHECKED BY	

- KEY:**
- ① Exist. Sign(s) & Post(s) to Remain
 - ② Relocate Exist. Sign(s) & Post(s)
 - ③ Remove Exist. & Install New Sign(s) & Post(s)
 - ④ Install New Sign(s) & Post(s)

STATE OF HAWAII
DEPARTMENT OF TRANSPORTATION
HIGHWAYS DIVISION
**SIGNING & PAVEMENT
MARKING PLAN**
KAMEHAMEHA V HIGHWAY RESURFACING
Kaunakakai to Kamiloioa Bridge
and Kapuokoolau to Kamalo
Project No. 450AB-01-01M
Scale: 1" = 40' Date: August, 2000
SHEET No. 4 OF 16 SHEETS

FED. ROAD DIST. NO.	STATE	PROJ. NO.	FISCAL YEAR	SHEET NO.	TOTAL SHEETS
HAWAII	HAW.	450AB-01-01M	2001	27	42



☼ CURVE DATA
 $\Delta = 20^\circ 49'$
 $R = 2864.79'$
 $T = 526.22'$
 $C = 1035.12'$
 $Lc = 1040.83'$
 $S. E. = 0.02 \text{ ft/ft}$

④
ROAD WORK AHEAD
 CW20-1A(d)
 (48"x48")

④
END ROAD WORK
 CG20-2A
 (48"x24")

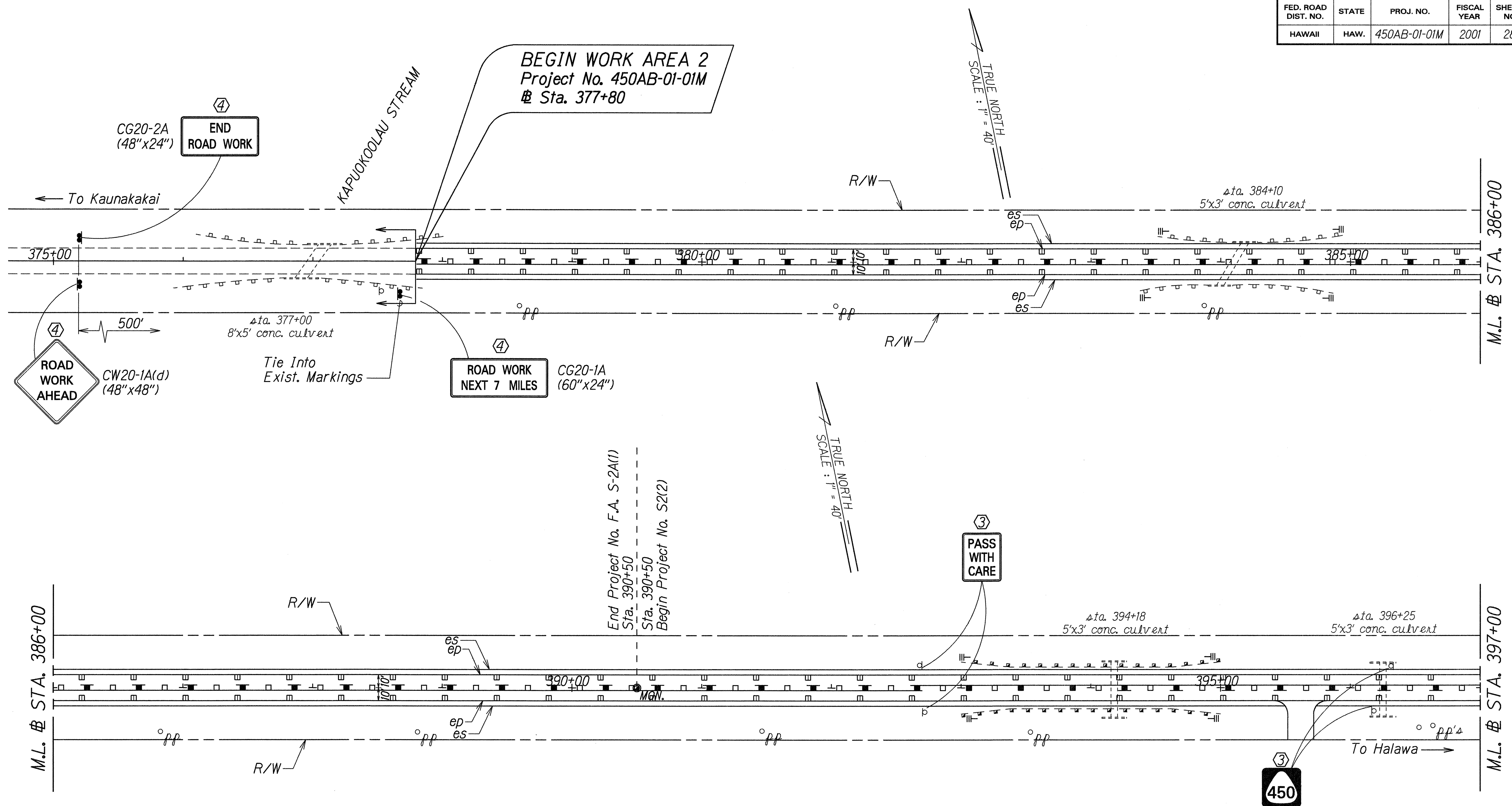
END WORK AREA 1
 Project No. 450AB-01-01M
 @ Sta. 95+00

ORIGINAL PLAN	DATE
DESIGNED BY	2/14/00
TRACED BY	
NOTED BY	
QUANTITIES BY	
CHECKED BY	

- KEY:**
- ① Exist. Sign(s) & Post(s) to Remain
 - ② Relocate Exist. Sign(s) & Post(s)
 - ③ Remove Exist. & Install New Sign(s) & Post(s)
 - ④ Install New Sign(s) & Post(s)

STATE OF HAWAII
 DEPARTMENT OF TRANSPORTATION
 HIGHWAYS DIVISION
SIGNING & PAVEMENT MARKING PLAN
 KAMEHAMEHA V HIGHWAY RESURFACING
 Kaunakakai to Kamiloloa Bridge
 and Kapukoolau to Kamalo
 Project No. 450AB-01-01M
 Scale: 1"=40' Date: August, 2000
 SHEET No. 5 OF 16 SHEETS

FED. ROAD DIST. NO.	STATE	PROJ. NO.	FISCAL YEAR	SHEET NO.	TOTAL SHEETS
HAWAII	HAW.	450AB-01-01M	2001	28	42



DESIGNED BY	DATE
DRAWN BY	Feb. 1998
TRACED BY	
DESIGNED BY	
QUANTITIES BY	
CHECKED BY	

- KEY:**
- ① Exist. Sign(s) & Post(s) to Remain
 - ② Relocate Exist. Sign(s) & Post(s)
 - ③ Remove Exist. & Install New Sign(s) & Post(s)
 - ④ Install New Sign(s) & Post(s)

STATE OF HAWAII
DEPARTMENT OF TRANSPORTATION
HIGHWAYS DIVISION

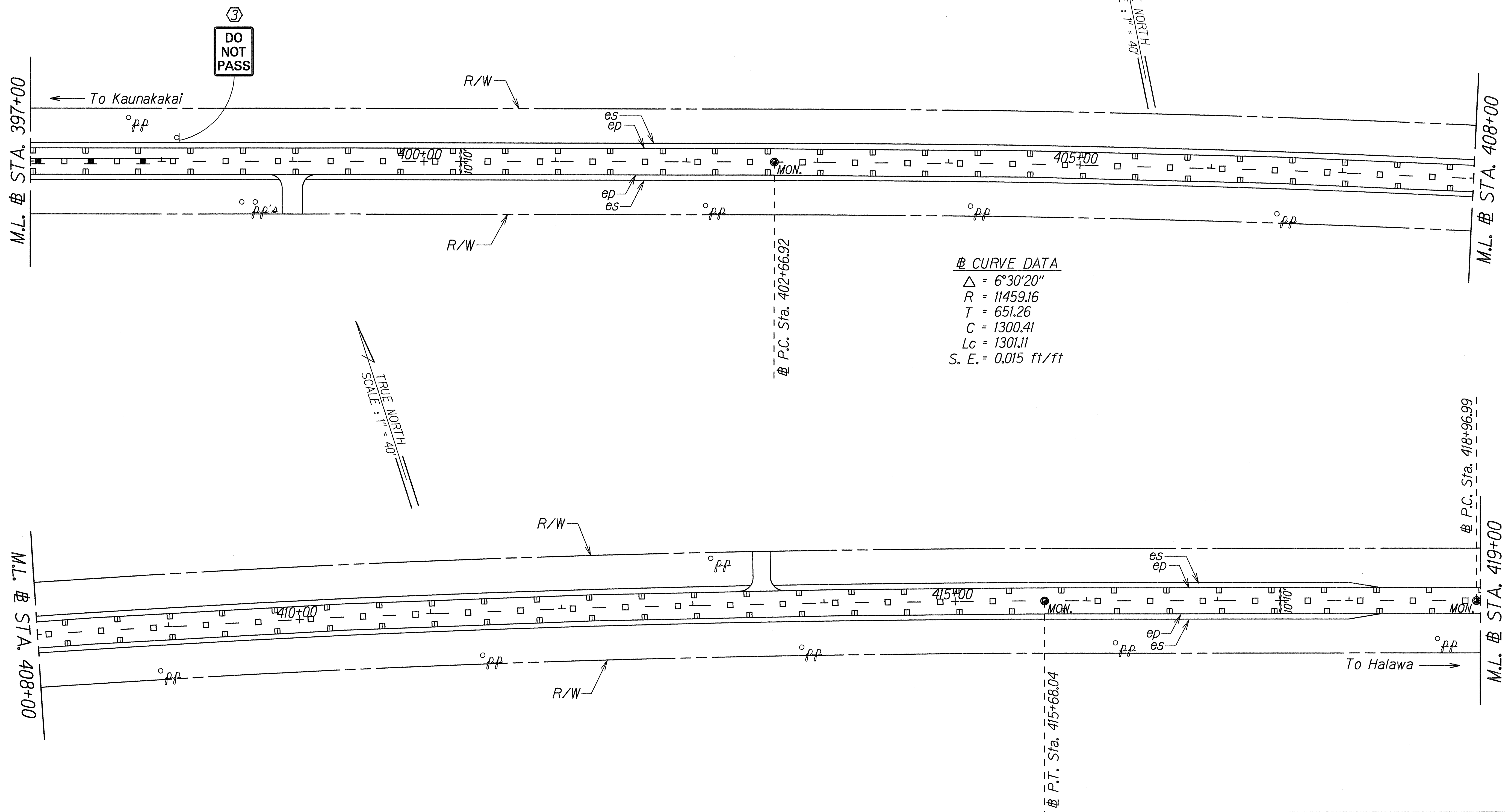
**SIGNING & PAVEMENT
MARKING PLAN**

KAMEHAMEHA V HIGHWAY RESURFACING
Kaunakakai to Kamilola Bridge
and Kapuokoolau to Kamalo
Project No. 450AB-01-01M

Scale: 1" = 40' Date: August, 2000

SHEET No. 6 OF 16 SHEETS

FED. ROAD DIST. NO.	STATE	PROJ. NO.	FISCAL YEAR	SHEET NO.	TOTAL SHEETS
HAWAII	HAW.	450AB-01-01M	2001	29	42



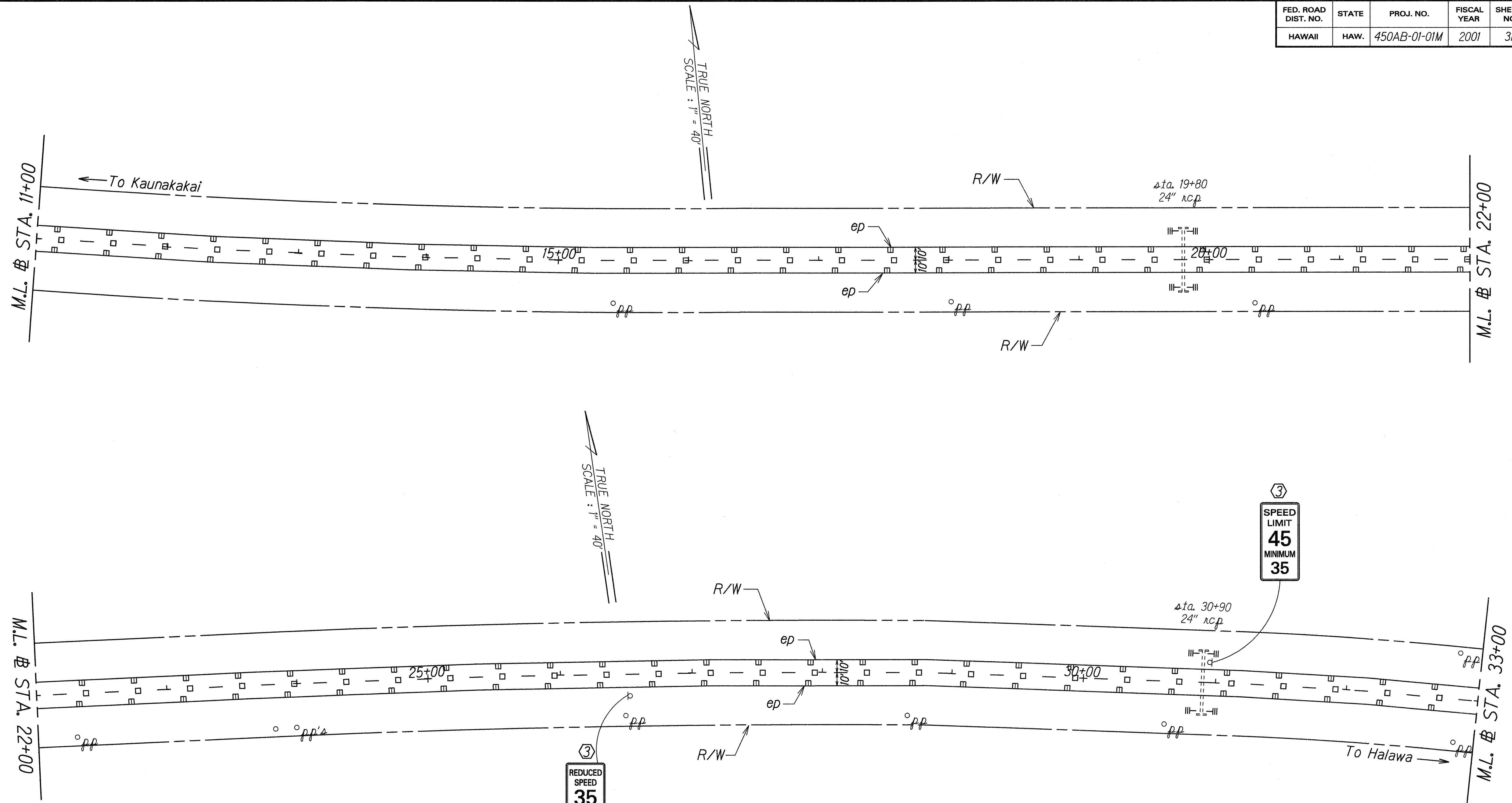
☯ CURVE DATA
 $\Delta = 6^{\circ}30'20''$
 $R = 11459.16$
 $T = 651.26$
 $C = 1300.41$
 $Lc = 1301.11$
 $S. E. = 0.015 \text{ ft/ft}$

DESIGNED BY	DATE
DRAWN BY	AUG. 2000
TRACED BY	
DESIGNED BY	
QUANTITIES BY	
CHECKED BY	

- KEY:**
- ① Exist. Sign(s) & Post(s) to Remain
 - ② Relocate Exist. Sign(s) & Post(s)
 - ③ Remove Exist. & Install New Sign(s) & Post(s)
 - ④ Install New Sign(s) & Post(s)

STATE OF HAWAII
DEPARTMENT OF TRANSPORTATION
HIGHWAYS DIVISION
**SIGNING & PAVEMENT
MARKING PLAN**
KAMEHAMEHA V HIGHWAY RESURFACING
Kaunakakai to Kamilola Bridge
and Kapuokoolau to Kamalo
Project No. 450AB-01-01M
Scale: 1" = 40' Date: August, 2000
SHEET No. 7 OF 16 SHEETS

FED. ROAD DIST. NO.	STATE	PROJ. NO.	FISCAL YEAR	SHEET NO.	TOTAL SHEETS
HAWAII	HAW.	450AB-01-01M	2001	31	42



DESIGNED BY	DATE
DRAWN BY	Aug. 2000
TRACED BY	
DESIGNED BY	
QUANTITIES BY	
CHECKED BY	

- KEY:
- ① Exist. Sign(s) & Post(s) to Remain
 - ② Relocate Exist. Sign(s) & Post(s)
 - ③ Remove Exist. & Install New Sign(s) & Post(s)
 - ④ Install New Sign(s) & Post(s)

STATE OF HAWAII
DEPARTMENT OF TRANSPORTATION
HIGHWAYS DIVISION

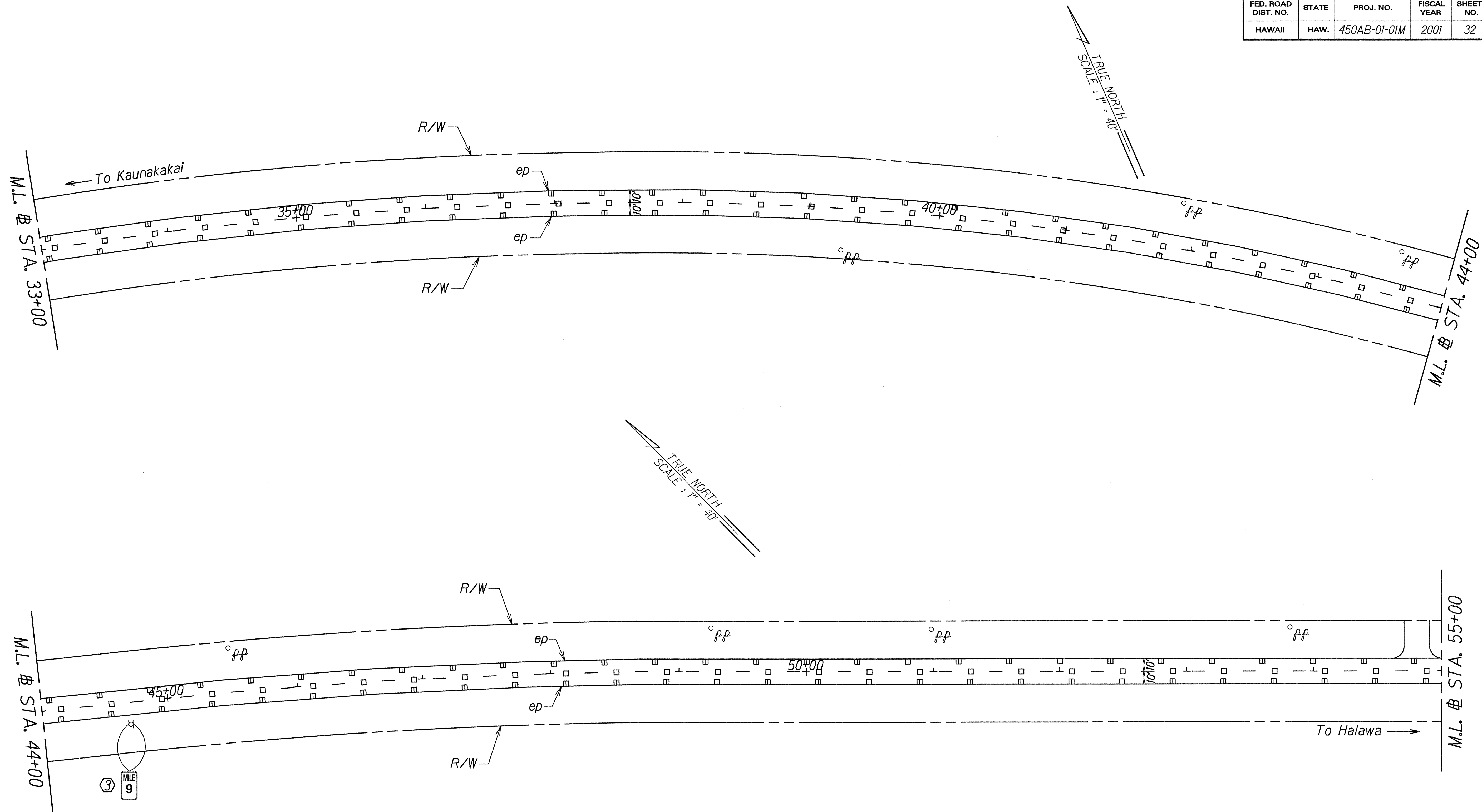
**SIGNING & PAVEMENT
MARKING PLAN**

KAMEHAMEHA V HIGHWAY RESURFACING
Kaunakakai to Kamilola Bridge
and Kapuokoolau to Kamalo
Project No. 450AB-01-01M

Scale: 1" = 40' Date: August, 2000

SHEET No. 9 OF 16 SHEETS

FED. ROAD DIST. NO.	STATE	PROJ. NO.	FISCAL YEAR	SHEET NO.	TOTAL SHEETS
HAWAII	HAW.	450AB-01-01M	2001	32	42



ORIGINAL PLAN	DATE
DESIGNED BY	Aug. 2000
TRACED BY	
DESIGNED BY	
QUANTITIES BY	
CHECKED BY	

- KEY:**
- ① Exist. Sign(s) & Post(s) to Remain
 - ② Relocate Exist. Sign(s) & Post(s)
 - ③ Remove Exist. & Install New Sign(s) & Post(s)
 - ④ Install New Sign(s) & Post(s)

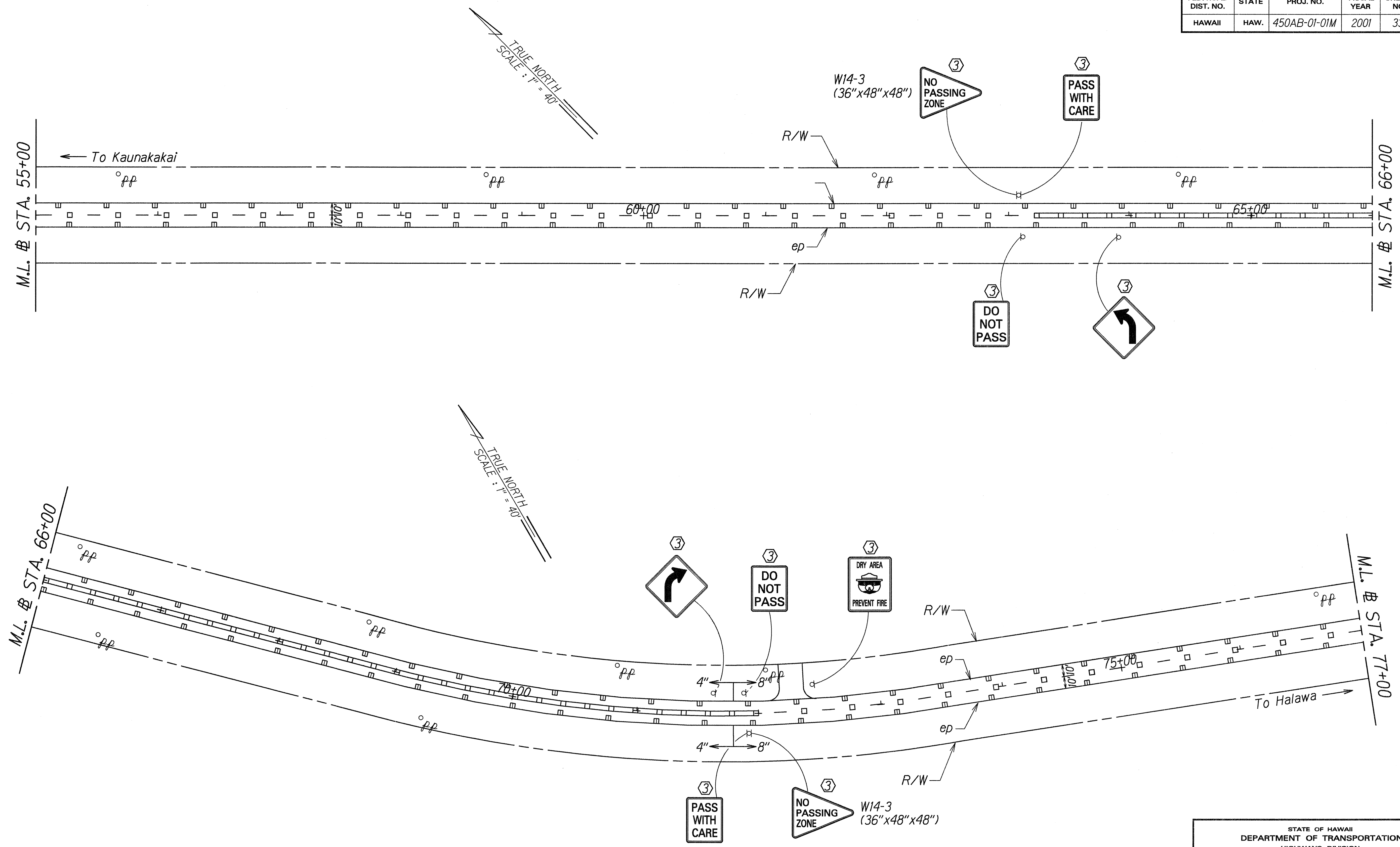
STATE OF HAWAII
DEPARTMENT OF TRANSPORTATION
HIGHWAYS DIVISION

**SIGNING & PAVEMENT
MARKING PLAN**

**KAMEHAMEHA V HIGHWAY RESURFACING
Kaunakakai to Kamilola Bridge
and Kapukoolau to Kamalo
Project No. 450AB-01-01M**

Scale: 1" = 40' Date: August, 2000

FED. ROAD DIST. NO.	STATE	PROJ. NO.	FISCAL YEAR	SHEET NO.	TOTAL SHEETS
HAWAII	HAW.	450AB-01-01M	2001	33	42



DESIGNED BY	DATE
DRAWN BY	Aug. 2000
TRACED BY	
DESIGNED BY	
QUANTITIES BY	
CHECKED BY	

- KEY:**
- ① Exist. Sign(s) & Post(s) to Remain
 - ② Relocate Exist. Sign(s) & Post(s)
 - ③ Remove Exist. & Install New Sign(s) & Post(s)
 - ④ Install New Sign(s) & Post(s)

STATE OF HAWAII
DEPARTMENT OF TRANSPORTATION
HIGHWAYS DIVISION

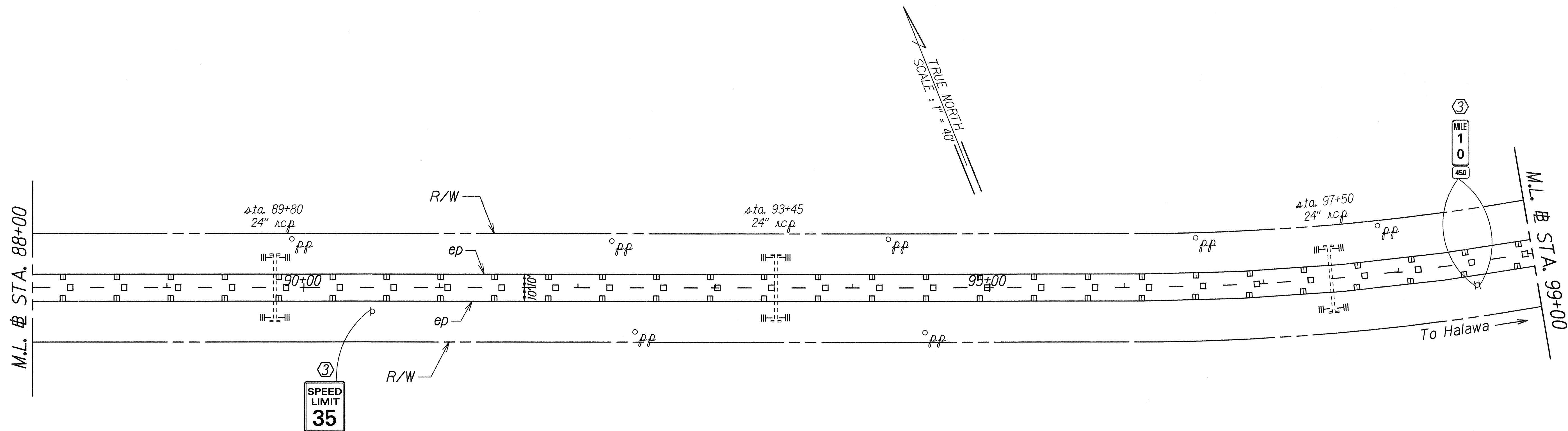
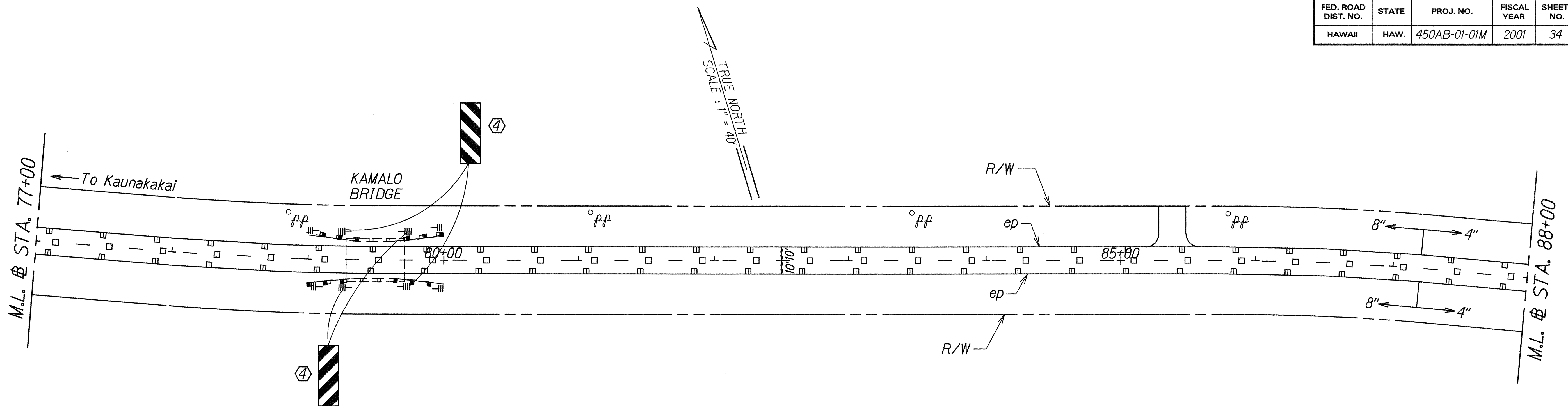
**SIGNING & PAVEMENT
MARKING PLAN**

**KAMEHAMEHA V HIGHWAY RESURFACING
Kaunakakai to Kamilola Bridge
and Kapuokoolau to Kamalo
Project No. 450AB-01-01M**

Scale: 1" = 40' Date: August, 2000

SHEET No. 11 OF 16 SHEETS

FED. ROAD DIST. NO.	STATE	PROJ. NO.	FISCAL YEAR	SHEET NO.	TOTAL SHEETS
HAWAII	HAW.	450AB-01-01M	2001	34	42



ORIGINAL PLAN	DESIGNED BY	DATE
NOTED	TRACED BY	AUG. 2002
QUANTITIES BY	CHECKED BY	

KEY:

- ① Exist. Sign(s) & Post(s) to Remain
- ② Relocate Exist. Sign(s) & Post(s)
- ③ Remove Exist. & Install New Sign(s) & Post(s)
- ④ Install New Sign(s) & Post(s)

STATE OF HAWAII
DEPARTMENT OF TRANSPORTATION
HIGHWAYS DIVISION

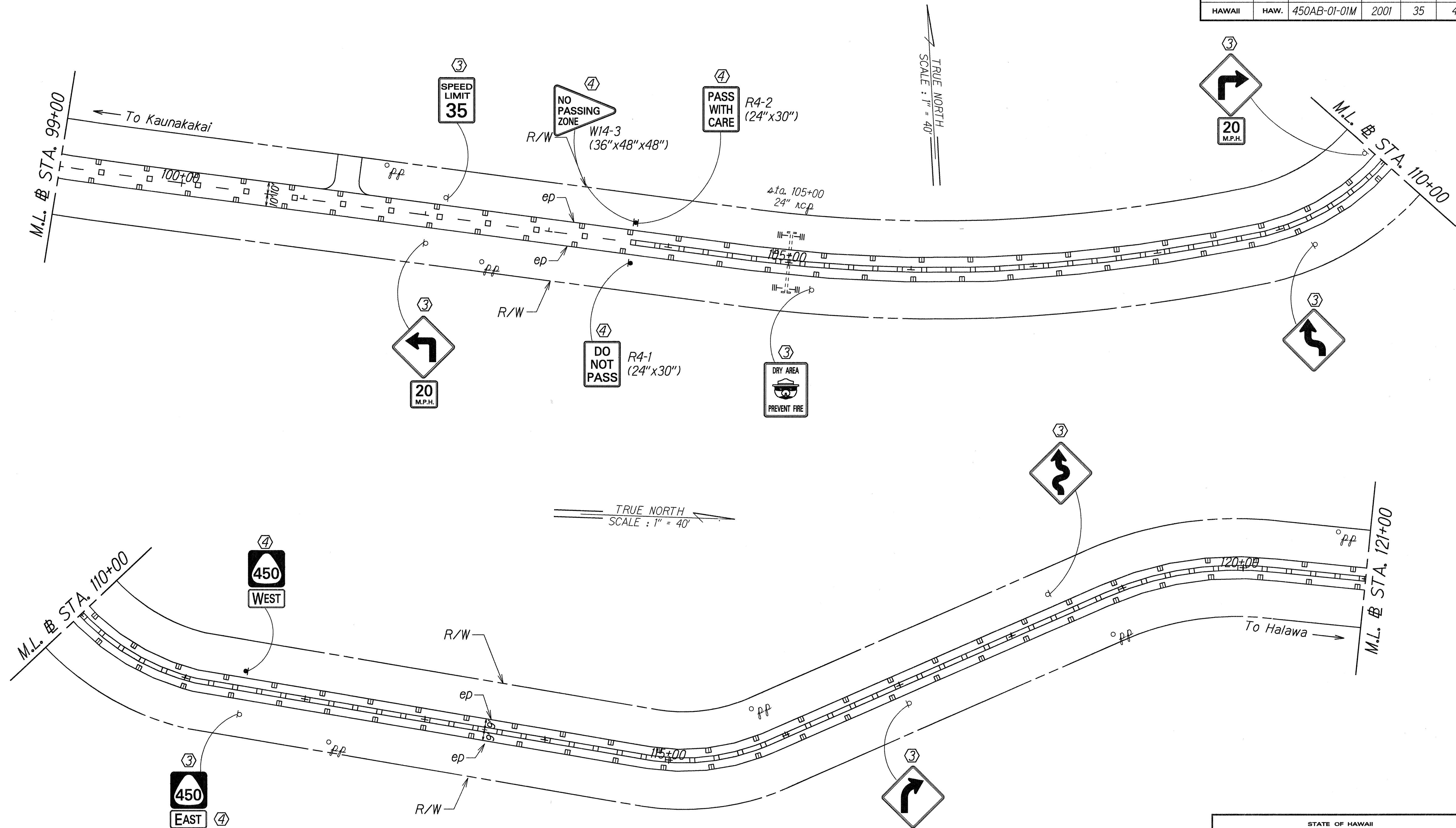
**SIGNING & PAVEMENT
MARKING PLAN**

**KAMEHAMEHA V HIGHWAY RESURFACING
Kaunakakai to Kamilola Bridge
and Kapuokoolau to Kamalo
Project No. 450AB-01-01M**

Scale: 1" = 40' Date: August, 2000

SHEET No. 12 OF 16 SHEETS

FED. ROAD DIST. NO.	STATE	PROJ. NO.	FISCAL YEAR	SHEET NO.	TOTAL SHEETS
HAWAII	HAW.	450AB-01-01M	2001	35	42



DESIGNED BY	DATE
PLANNED BY	AUG. 2000
TRACED BY	
DESIGNED BY	
QUANTITIES BY	
CHECKED BY	
ORIGINAL	
PLANS	
NOTE BOOK	
DESIGNED BY	
QUANTITIES BY	
CHECKED BY	

- KEY:**
- ① Exist. Sign(s) & Post(s) to Remain
 - ② Relocate Exist. Sign(s) & Post(s)
 - ③ Remove Exist. & Install New Sign(s) & Post(s)
 - ④ Install New Sign(s) & Post(s)

STATE OF HAWAII
DEPARTMENT OF TRANSPORTATION
HIGHWAYS DIVISION

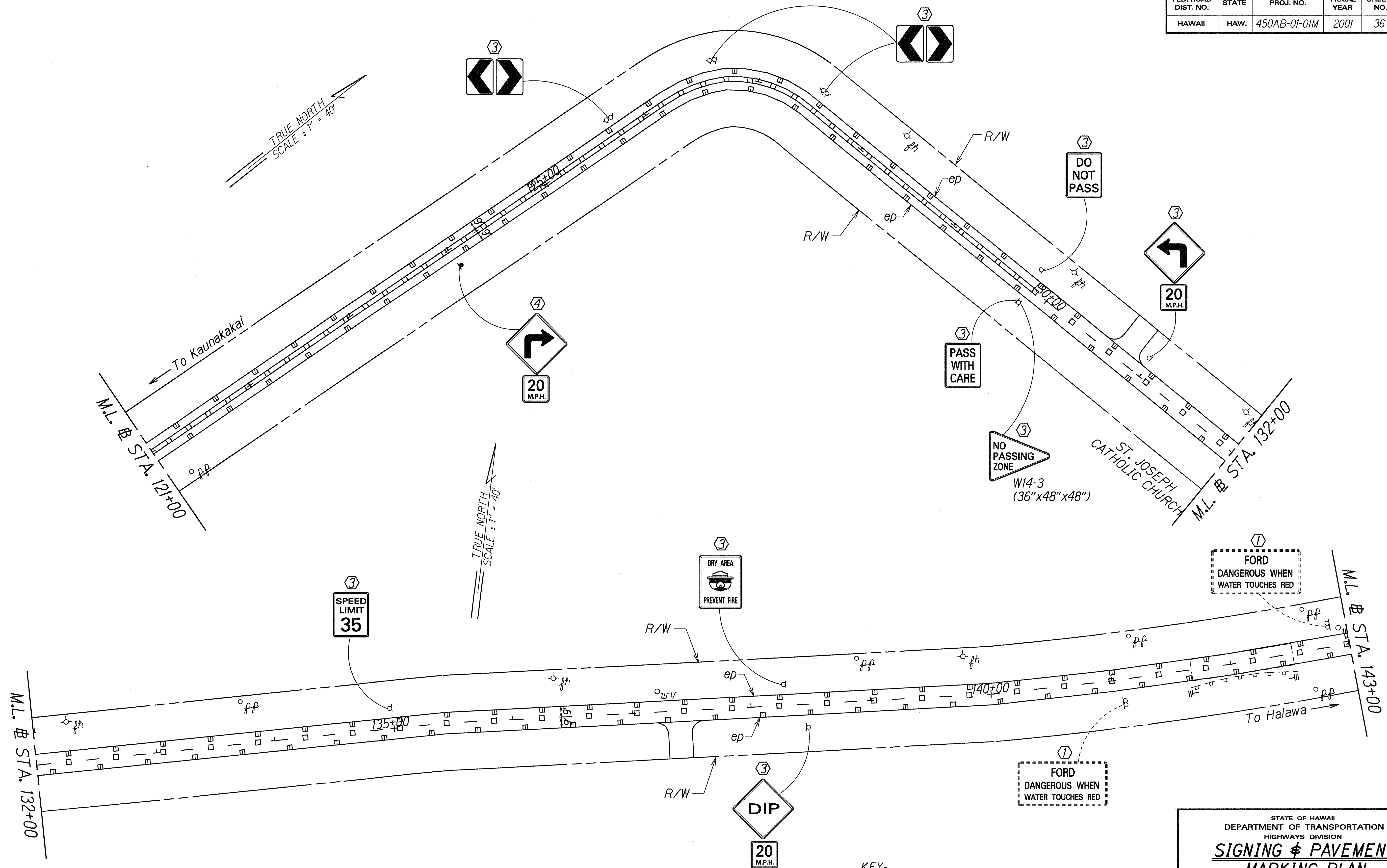
**SIGNING & PAVEMENT
MARKING PLAN**

**KAMEHAMEHA V HIGHWAY RESURFACING
Kaunakakai to Kamilola Bridge
and Kapukoolau to Kamalo
Project No. 450AB-01-01M**

Scale: 1" = 40' Date: August, 2000

SHEET No. 13 OF 16 SHEETS

FED. ROAD DIST. NO.	STATE	PROJ. NO.	FISCAL YEAR	SHEET NO.	TOTAL SHEETS
HAWAII	HAW.	450AB-01-01M	2001	36	42



DESIGNED BY	DATE
TRACED BY	AUG. 2002
DESIGNED BY	
QUANTITIES BY	
CHECKED BY	
ORIGINAL PLAN	
NOTE BOOK	
DESIGNED BY	
QUANTITIES BY	
CHECKED BY	

- KEY:**
- ① Exist. Sign(s) & Post(s) to Remain
 - ② Relocate Exist. Sign(s) & Post(s)
 - ③ Remove Exist. & Install New Sign(s) & Post(s)
 - ④ Install New Sign(s) & Post(s)

STATE OF HAWAII
DEPARTMENT OF TRANSPORTATION
HIGHWAYS DIVISION

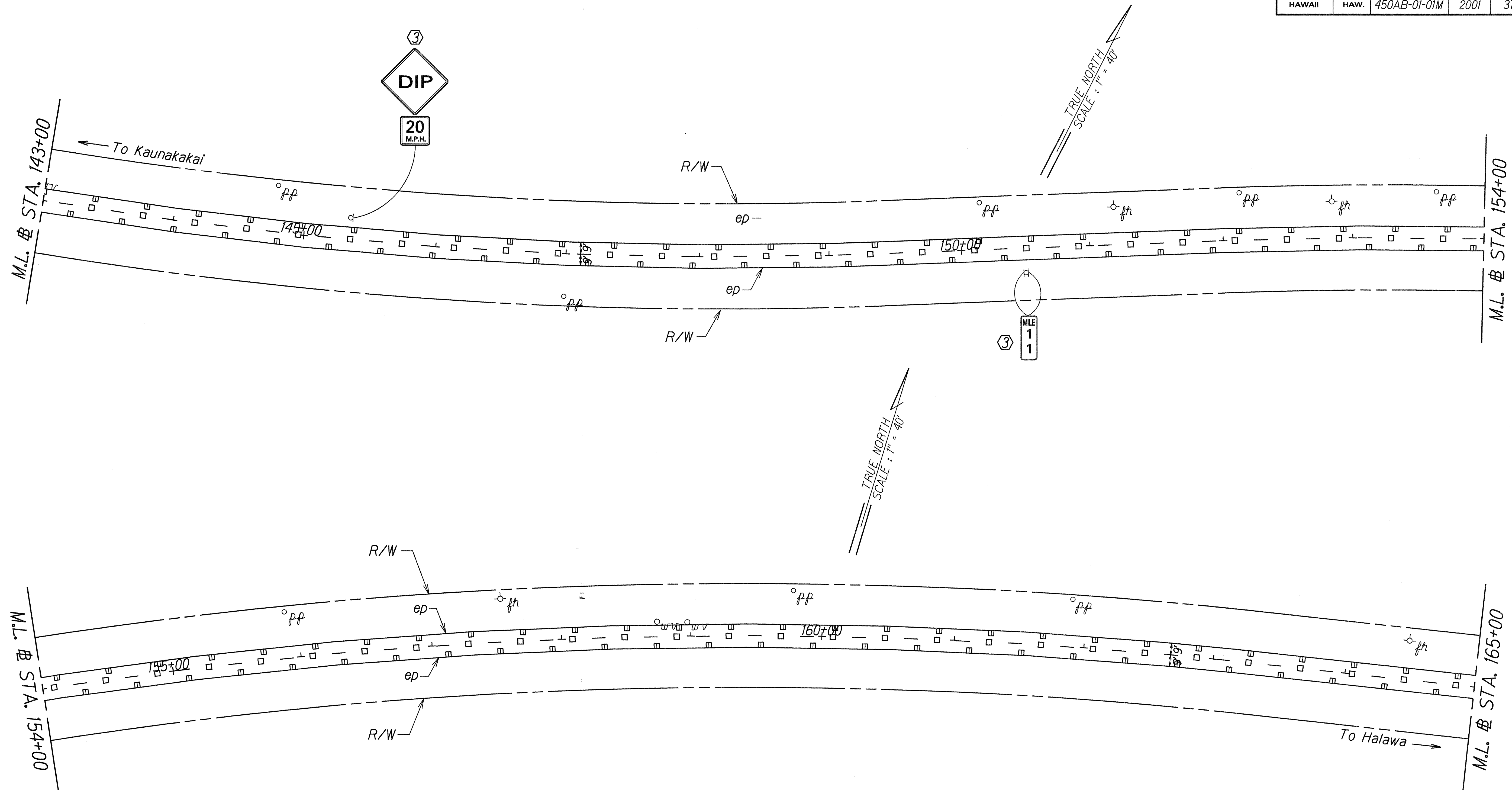
**SIGNING & PAVEMENT
MARKING PLAN**

KAMEHAMEHA V HIGHWAY RESURFACING
Kaunakakai to Kamilola Bridge
and Kapukoolau to Kamalo
Project No. 450AB-01-01M

Scale: 1" = 40' Date: August, 2000

SHEET No. 14 OF 16 SHEETS

FED. ROAD DIST. NO.	STATE	PROJ. NO.	FISCAL YEAR	SHEET NO.	TOTAL SHEETS
HAWAII	HAW.	450AB-01-01M	2001	37	42



ORIGINAL PLAN	DESIGNED BY	DATE
NOTED	TRACED BY	Aug. 2000
QUANTITIES BY	CHECKED BY	

- KEY:**
- ① Exist. Sign(s) & Post(s) to Remain
 - ② Relocate Exist. Sign(s) & Post(s)
 - ③ Remove Exist. & Install New Sign(s) & Post(s)
 - ④ Install New Sign(s) & Post(s)

STATE OF HAWAII
DEPARTMENT OF TRANSPORTATION
HIGHWAYS DIVISION

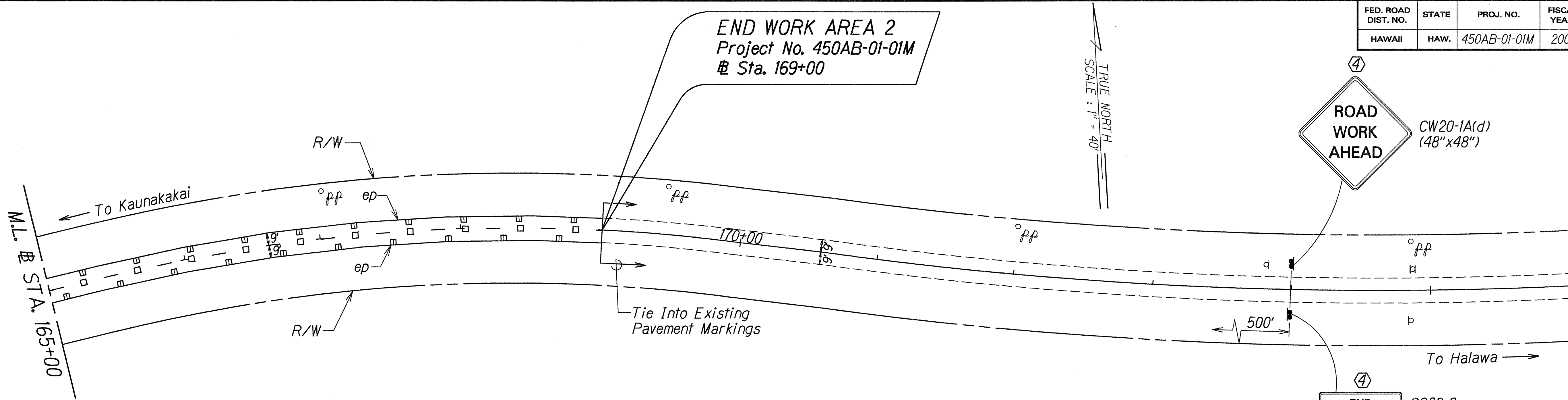
**SIGNING & PAVEMENT
MARKING PLAN**

KAMEHAMEHA V HIGHWAY RESURFACING
Kaunakakai to Kamilola Bridge
and Kapukoolau to Kamalo
Project No. 450AB-01-01M

Scale: 1" = 40' Date: August, 2000

SHEET No. 15 OF 16 SHEETS

FED. ROAD DIST. NO.	STATE	PROJ. NO.	FISCAL YEAR	SHEET NO.	TOTAL SHEETS
HAWAII	HAW.	450AB-01-01M	2001	38	42



DESIGNED BY	DATE
PLANNED BY	Aug. 2000
TRACED BY	
DESIGNED BY	
QUANTITIES BY	
CHECKED BY	

- KEY:**
- ① Exist. Sign(s) & Post(s) to Remain
 - ② Relocate Exist. Sign(s) & Post(s)
 - ③ Remove Exist. & Install New Sign(s) & Post(s)
 - ④ Install New Sign(s) & Post(s)

STATE OF HAWAII
DEPARTMENT OF TRANSPORTATION
HIGHWAYS DIVISION

**SIGNING & PAVEMENT
MARKING PLAN**

**KAMEHAMEHA V HIGHWAY RESURFACING
Kaunakakai to Kamilola Bridge
and Kapuokoolau to Kamalo
Project No. 450AB-01-01M**

Scale: 1" = 40' Date: August, 2000