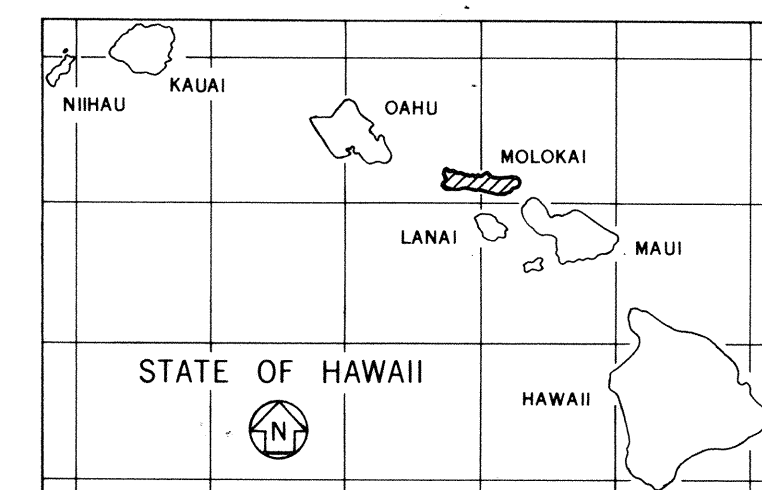
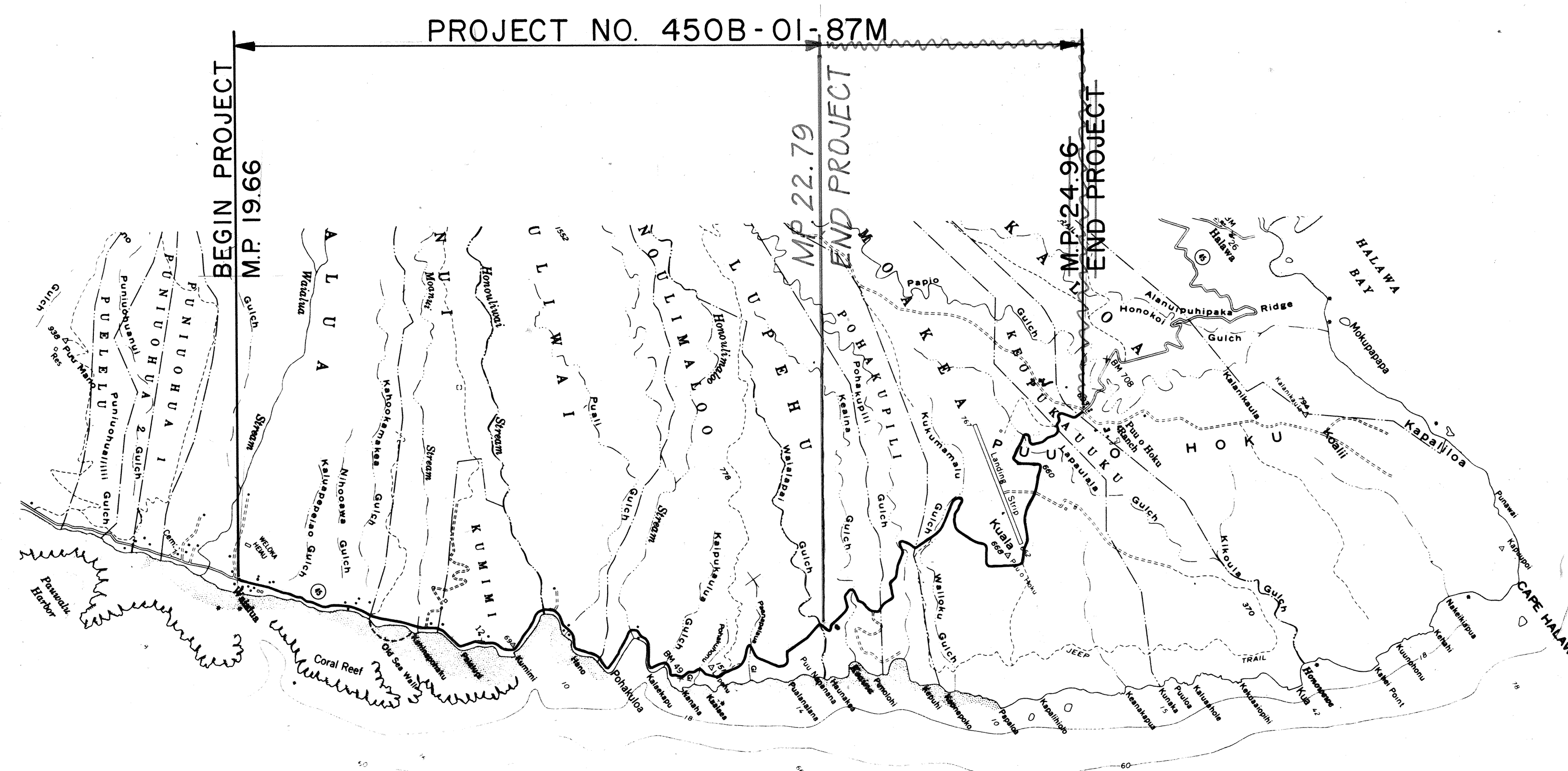
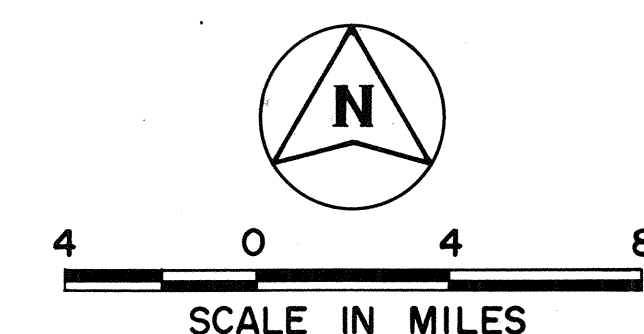


[illegible]

FED. ROAD DIST. NO.	STATE	PROJ. NO.	FISCAL YEAR	SHEET NO.	TOTAL SHEETS
HAWAII	HAW.	450B-01-87M	1987	1	3



DISTRICT OF MOLOKAI
ISLAND OF MOLOKAI



LOCATION MAP

CHANGES MADE DURING CONSTRUCTION HAVE
BEEN NOTED ON THESE PLANS AND CHECKED BY:

Michael Downing
RESIDENT ENGINEER

DEPARTMENT OF TRANSPORTATION
STATE OF HAWAII

APPROVED:

A. Harano 4/1/87
DIR. OF TRANSPORTATION DATE