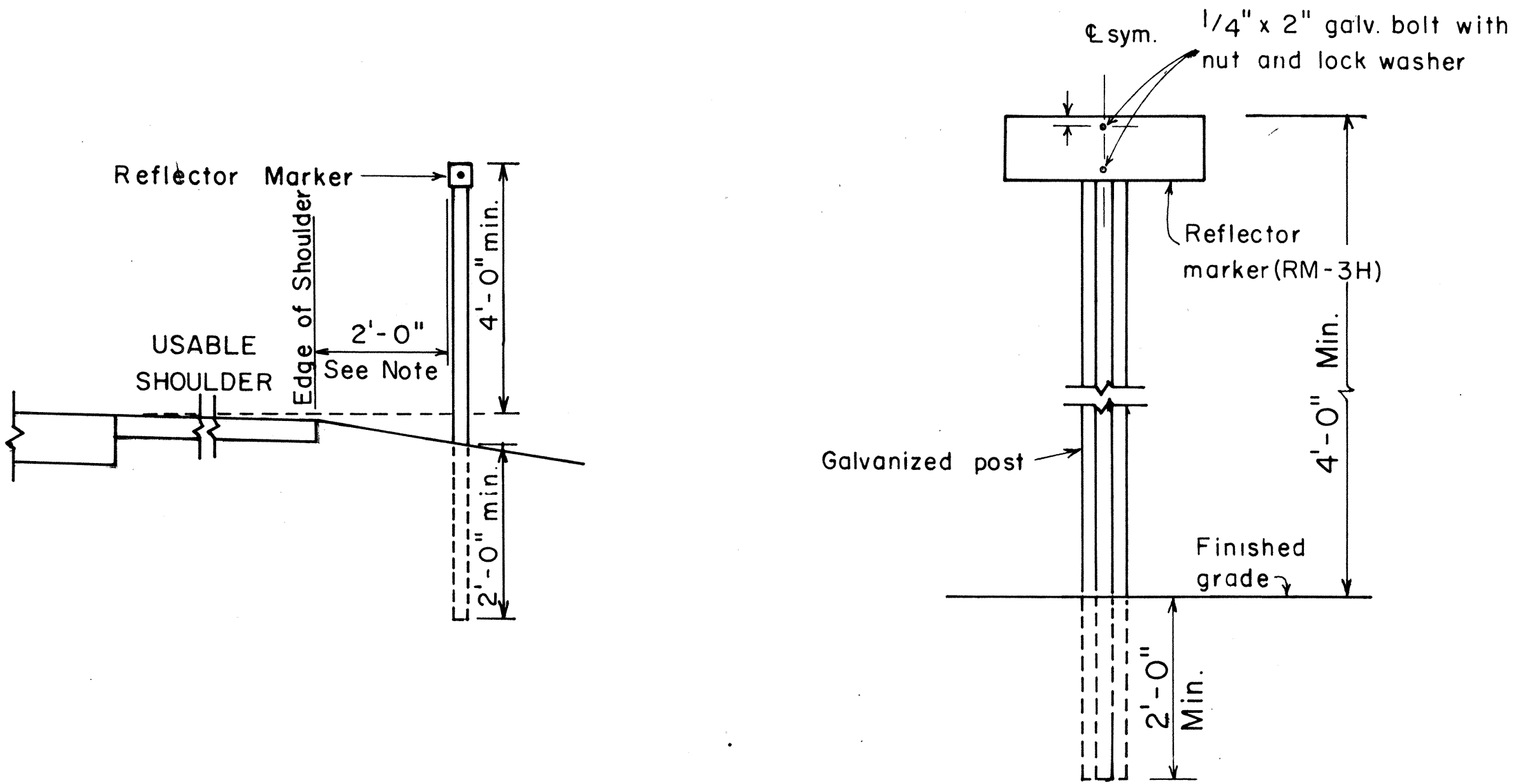


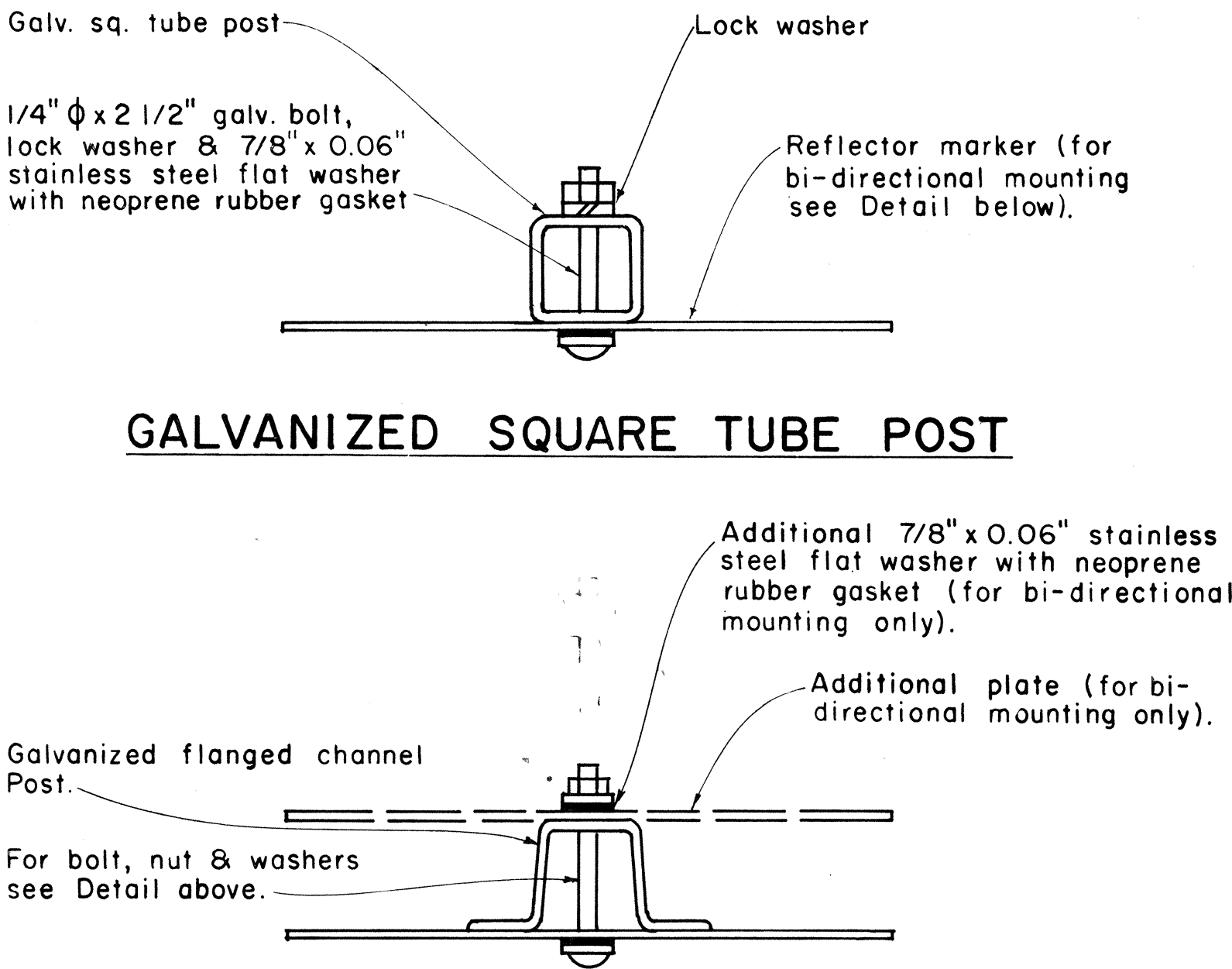
FED. ROAD DIST. NO.	STATE	PROJ. NO.	FISCAL YEAR	SHEET NO.	TOTAL SHEETS
HAWAII	HAW.	450B-03-82	1982	3	3

GENERAL NOTES:

- Clearance markers (RM-3, RM-4) shall be installed with the edge of the marker in line with the inner edge of the obstruction.
- (R) or (L) indicates right or left and shall be as shown on the plans.
- Reflector markers RM-1 and RM-2 shall be:
 - Yellow if placed along the left edge of divided roadways, one-way roadways, and ramps in the direction of travel.
 - White if placed along the right edge of divided roadways, one-way roadways, and ramps in the direction of travel.
- For reflector marker RM-9, reflective sheeting material may be used as an alternate.
- For RM-4, the stripes shall slope downward at an angle of 45° in the direction of traffic.



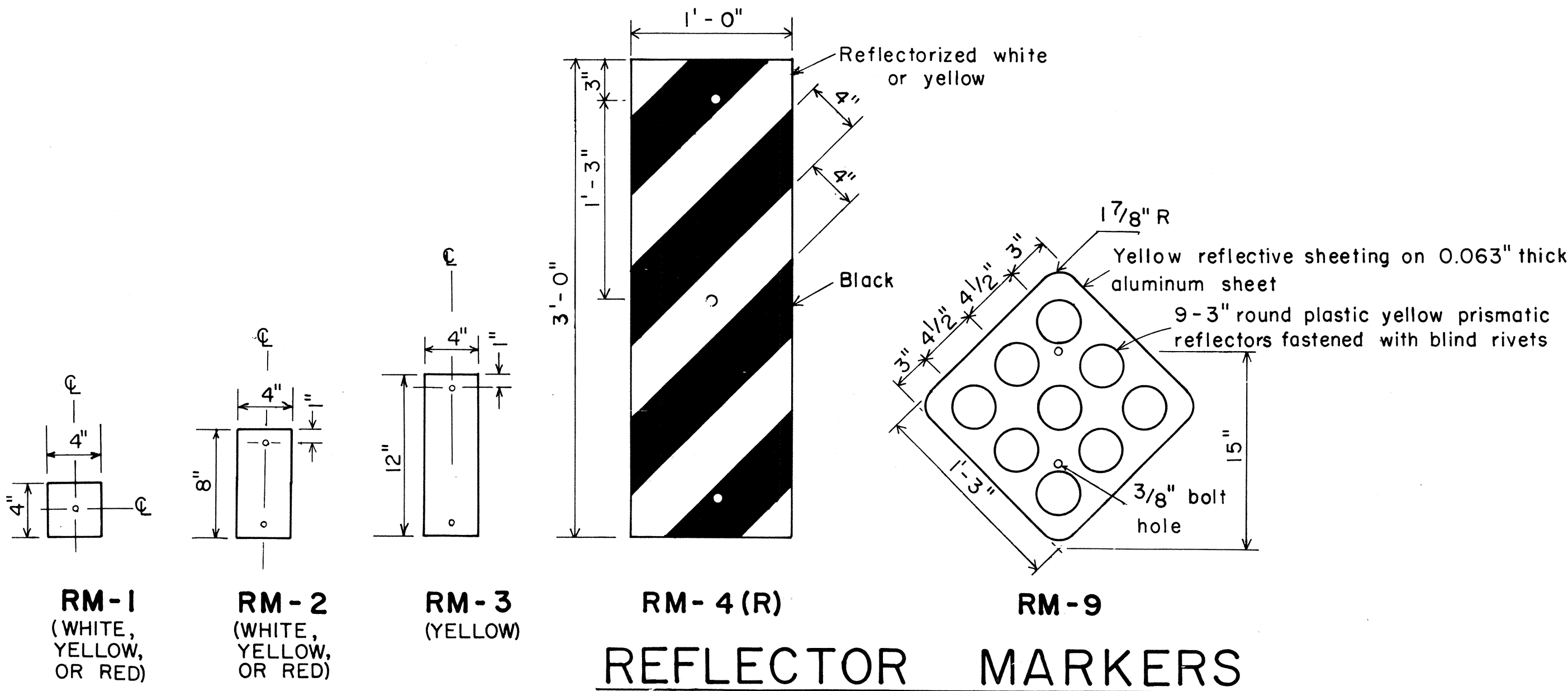
REFLECTOR MARKER MOUNTING DETAIL



GALVANIZED SQUARE TUBE POST

GALVANIZED FLANGED CHANNEL POST

TYPICAL MOUNTING DETAILS



APPROVAL RECOMMENDED:
Erich Tanaka 11/7/77
 TRAFFIC ENGINEER DATE
 APPROVED:
Herbert B. Sakai 11/15/77
 ASSISTANT CHIEF, ENGINEERING DATE

NO.	REVISION	APPROVED BY	DATE
1	Revised Mounting Details	H.T.	4/23/80

STATE OF HAWAII
DEPARTMENT OF TRANSPORTATION
HIGHWAYS DIVISION

STANDARD DETAILS
MISCELLANEOUS REFLECTOR MARKERS

Not to scale
June, 1977