

GENERAL:

- FOUNDATION DESIGN CRITERIA:**

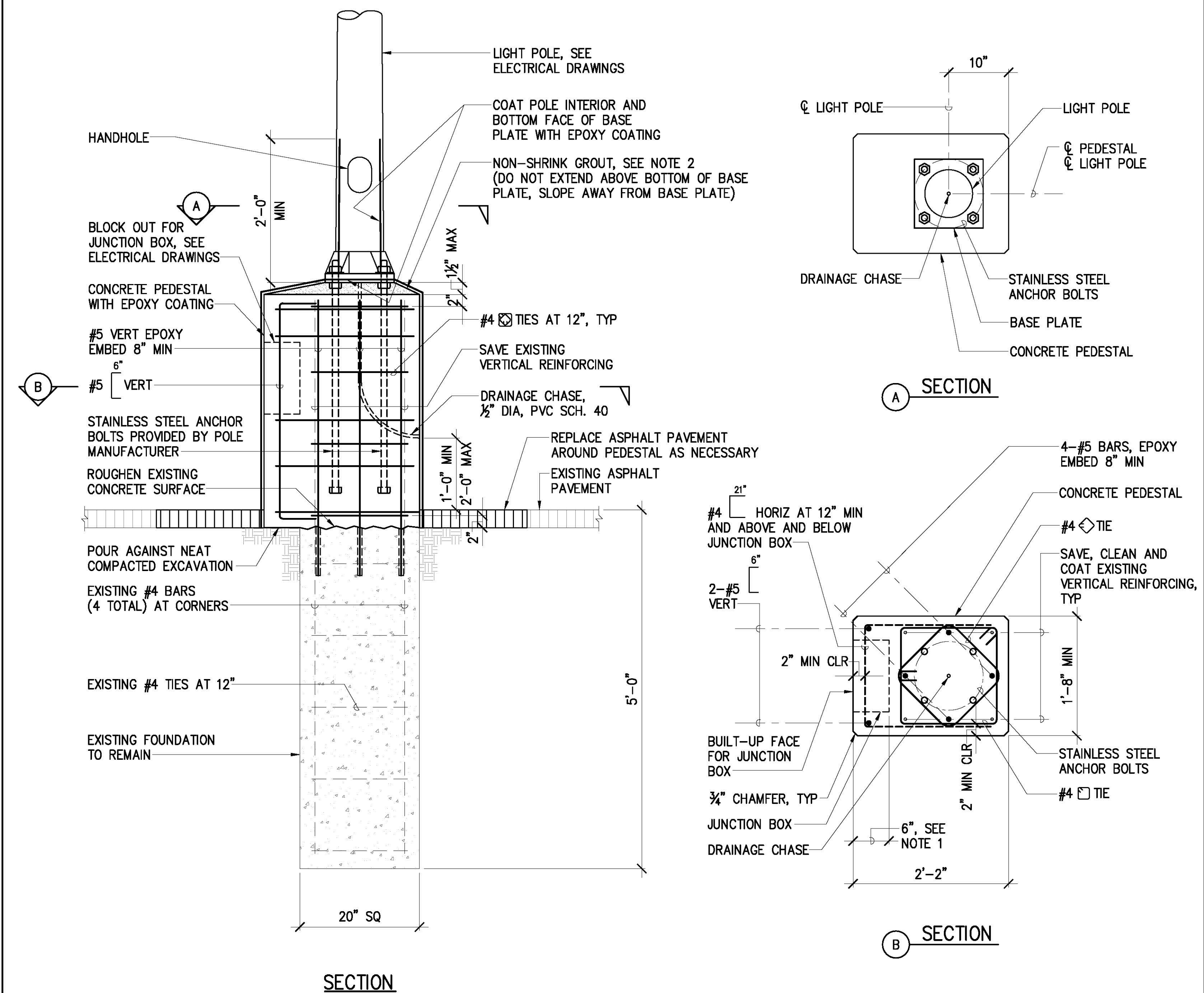
1. WIND
 - a. BASIC WIND SPEED=130 MPH
 - b. EXPOSURE C
 - c. TOPOGRAPHIC FACTOR $K_{zt}=1.00$
 - d. DIRECTIONALITY FACTOR $K_d=1.00$
 - e. RISK CATEGORY II

CONCRETE:

1. CONCRETE CONSTRUCTION SHALL CONFORM TO AMERICAN CONCRETE INSTITUTE ACI 318-14.
2. FORMED CONCRETE SHALL HAVE A 28-DAY COMPRESSIVE STRENGTH OF 5,000 PSI WITH SILICA FUME AND CORTEC MCI 2005 NS MIGRATING CORROSION INHIBITING ADMIXTURE, OR APPROVED EQUAL.
3. CONCRETE DELIVERY TICKETS SHALL RECORD ALL FREE WATER IN THE MIX: AT BATCHING BY PLANT, FOR CONSISTENCY BY DRIVER, AND ANY ADDITIONAL REQUEST BY CONTRACTOR IF PERMITTED BY THE MIX DESIGN.
4. MAXIMUM WATER TO CEMENTITIOUS MATERIALS RATIO SHALL BE 0.40.
5. REINFORCING BARS, ANCHOR BOLTS, INSERTS, AND OTHER ITEMS TO BE CAST IN THE CONCRETE SHALL BE SECURED IN POSITION PRIOR TO PLACEMENT OF CONCRETE.
6. NON-SHRINK GROUT SHALL BE A PREMIXED NON-METALLIC FORMULA, CAPABLE OF DEVELOPING A MINIMUM 1-DAY COMPRESSIVE STRENGTH OF 3,000 PSI AND 28-DAY COMPRESSIVE STRENGTH OF 5,000 PSI.
7. ASPHALT PAVEMENT FOR WEARING SURFACE SHALL BE STATE MIX III.

REINFORCING STEEL:

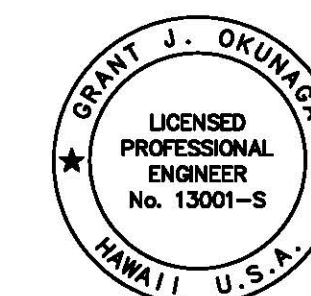
1. REINFORCING STEEL SHALL BE ASTM A615, GRADE 60.
2. CLEAR CONCRETE COVER FOR REINFORCING BARS SHALL BE TWO INCHES MINIMUM, UNLESS OTHERWISE NOTED.
3. BAR BENDS AND HOOKS SHALL BE STANDARD HOOKS IN ACCORDANCE WITH ACI 318.
4. ANTI-CORROSION COATING WITH A MINIMUM 7 DAY OPEN TIME FOR REINFORCING STEEL SHALL BE ARMATEC 110 EPOCEM BY SIKA OR APPROVED EQUAL.
5. THE WIRE SHALL BE PLASTIC-COATED, STAINLESS STEEL, OR MADE OF DIELECTRIC OR OTHER ACCEPTABLE MATERIAL. ALL LOOSE REINFORCING STEEL SHALL BE SECURED WITH TIES AT ALL INTERSECTIONS WITH ADJACENT REINFORCING STEEL.
6. EPOXY FOR GROUTING OF DOWELS IN CRACKED OR UNCRACKED CONCRETE SHALL BE SET-3G BY SIMPSON STRONG-TIE OR APPROVED EQUAL.



NOTES:

1. BUILT-UP FACE FOR JUNCTION BOX SHALL MATCH THE JUNCTION BOX DEPTH.
2. MAXIMUM GROUT HEIGHT SHALL BE 3" MAX AND AS RECOMMENDED BY THE POLE MANUFACTURER.
3. SEE ELECTRICAL DRAWINGS FOR ELECTRICAL WORK INCLUDING CONDUITS, GROUNDING ROD, ETC.

REVISION	DATE	DESCRIPTION	BY APPROVED
STATE OF HAWAII DEPARTMENT OF TRANSPORTATION HARBORS DIVISION			
JOB TITLE REPAIR LIGHTING AT PIER 1 SHED KAHULUI HARBOR, MAUI, HAWAII			
SHEET TITLE STRUCTURAL NOTES AND LIGHT POLE SL-2 REPAIR DETAILS			
DESIGNED BY: GO DRAWN BY: DL CHECKED BY: GM DATE: APRIL 2023 SCALE: AS SHOWN	JOB NUMBER S30226		SHEET S-1 3 of 10 SHEETS



THIS WORK WAS PREPARED BY ME
OR UNDER MY SUPERVISION.


PROJECT ENGINEER for

APRIL 30, 2024
EXPIRATION DATE OF THE LICENSE

1 PEDESTAL REPAIR (SL-2)
S-1 SCALE: 1" = 1'-0"