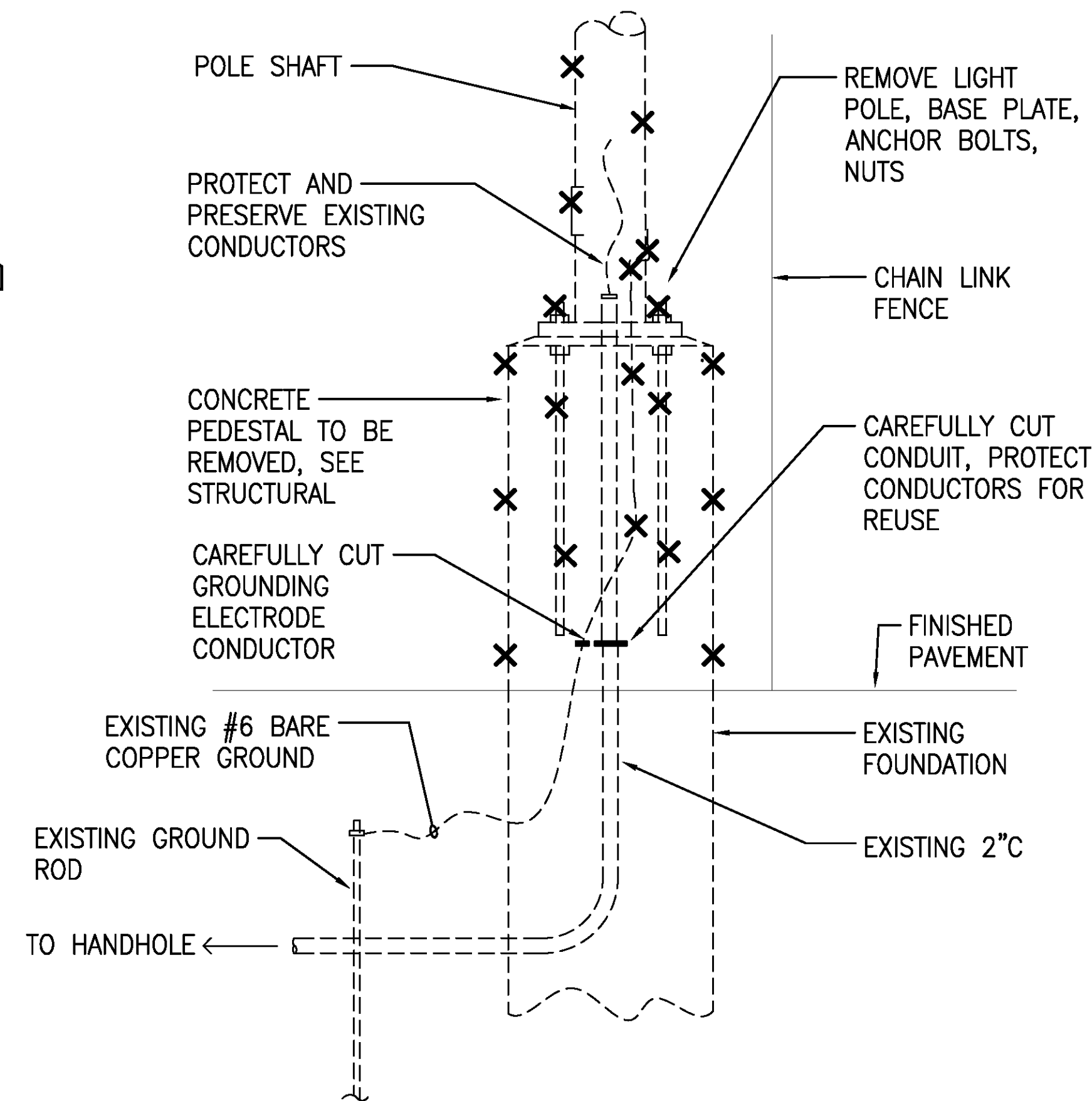


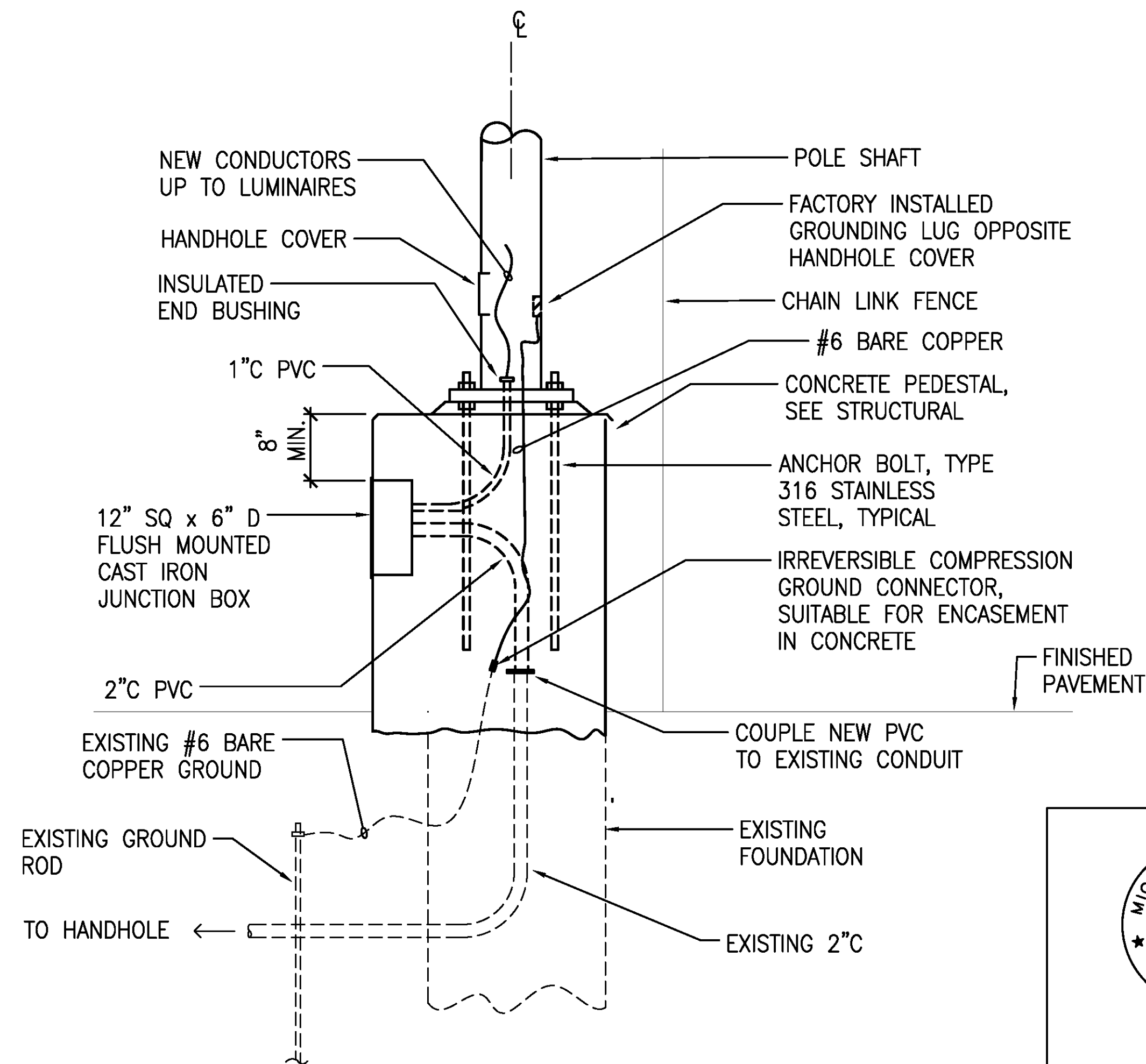
NOTE:

PAINT LIGHT POLE ASSEMBLY INCLUDING EXPOSED PORTIONS OF THE ANCHOR BOLTS, NUTS, WASHERS, BRACKET ARMS, POLE INTERIOR UP TO FOUR FEET (MEASURED UPWARDS FROM THE BASE PLATE), AND CONCRETE PEDESTAL IN ACCORDANCE WITH THE PAINTING SPECIFICATIONS. DO NOT FIELD PAINT LUMINAIRES.

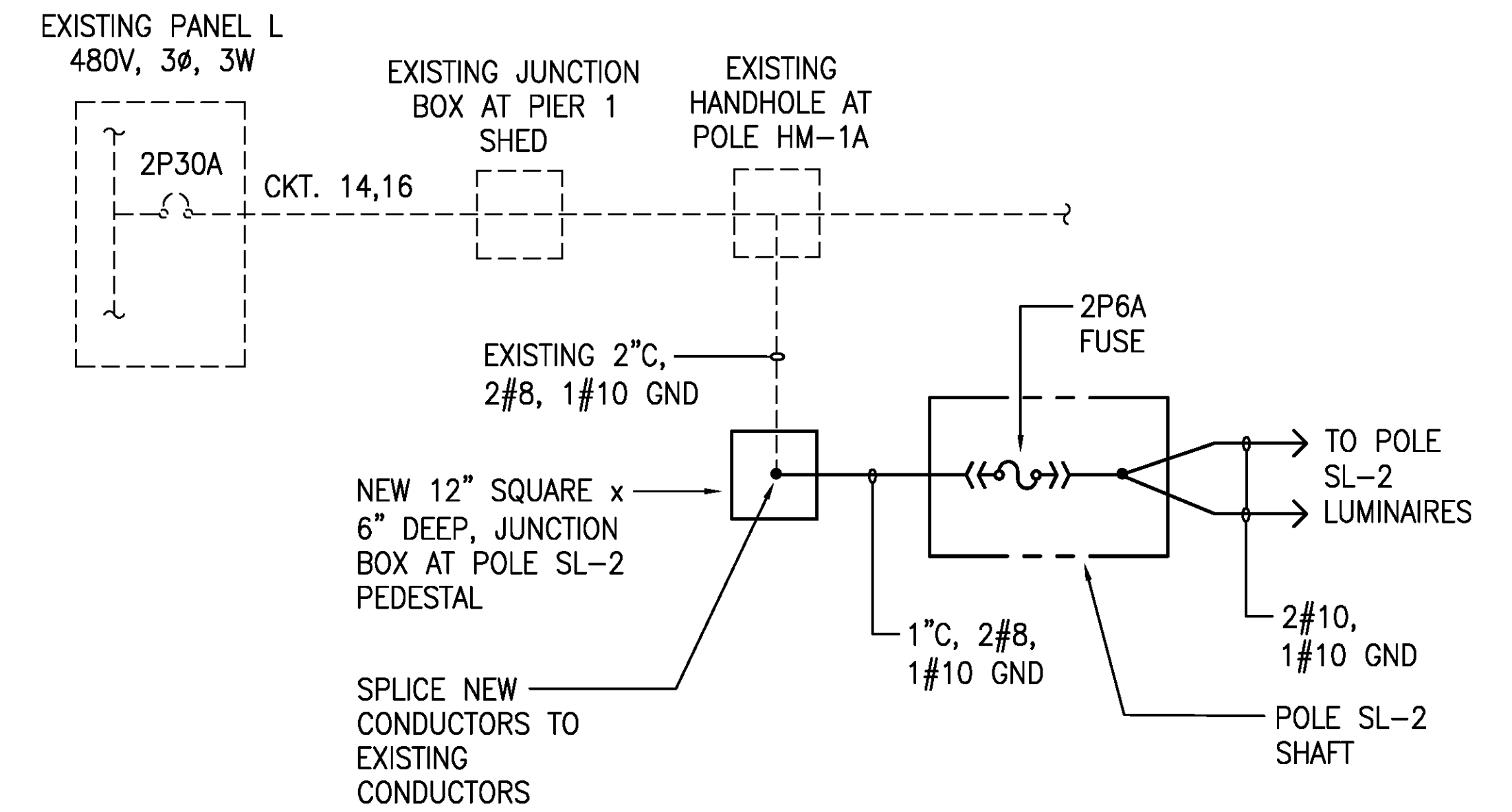
1 LIGHT POLE DETAIL (SL-2)
E-5 NOT TO SCALE



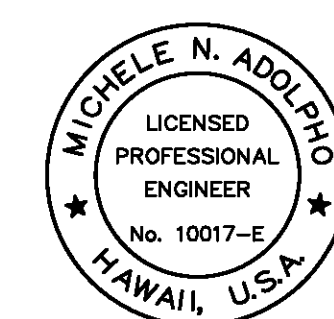
2 PEDESTAL - DEMOLITION WORK
E-5 NOT TO SCALE



3 PEDESTAL - NEW WORK
E-5 NOT TO SCALE



4 LIGHT POLE SL-2 WIRING DIAGRAM
E-5 NO SCALE



THIS WORK WAS PREPARED BY ME OR UNDER MY SUPERVISION.

Michele N. Adorpio

PROJECT ENGINEER for ECS, Inc.

APRIL 30, 2024

EXPIRATION DATE OF THE LICENSE

REVISION	DATE	DESCRIPTION	BY	APPROVED
STATE OF HAWAII DEPARTMENT OF TRANSPORTATION HARBORS DIVISION				
JOB TITLE REPAIR LIGHTING AT PIER 1 SHED KAHULUI HARBOR, MAUI, HAWAII				
SHEET TITLE LIGHT POLE DETAILS				
DESIGNED BY: MA				SHEET E-5
DRAWN BY: OL				
CHECKED BY: MA	JOB NUMBER S30226			8 OF 10 SHEETS
DATE: APRIL 2023				
SCALE: AS SHOWN				