

BEST MANAGEMENT PRACTICE EROSION CONTROL NOTES:

1.

CONTRACTOR TO INSTALL DRAIN INLET PROTECTION BEFORE THE START OF ANY WORK.
2.

DRAIN INLET PROTECTION SHALL BE IMMEDIATELY REPAIRED WHEN DAMAGED DURING CONSTRUCTION OPERATIONS.
3.

BMP MEASURES AND PRACTICES SHALL BE IN ACCORDANCE WITH HDOT-A'S OGG SWMPP, WHICH INCLUDES, BUT IS NOT LIMITED TO, HDOT-A'S CONSTRUCTION ACTIVITIES BMP FIELD MANUAL.
4.

THE CONTRACTOR'S CONSTRUCTION ACTIVITIES SHALL BE IN ACCORDANCE AND COMPLIANCE WITH THE DOH'S NPDES PERMIT WHICH INCLUDES, BUT IS NOT LIMITED TO, HAR CHAPTER 11-54, 11-55, AND 11-56.
5.

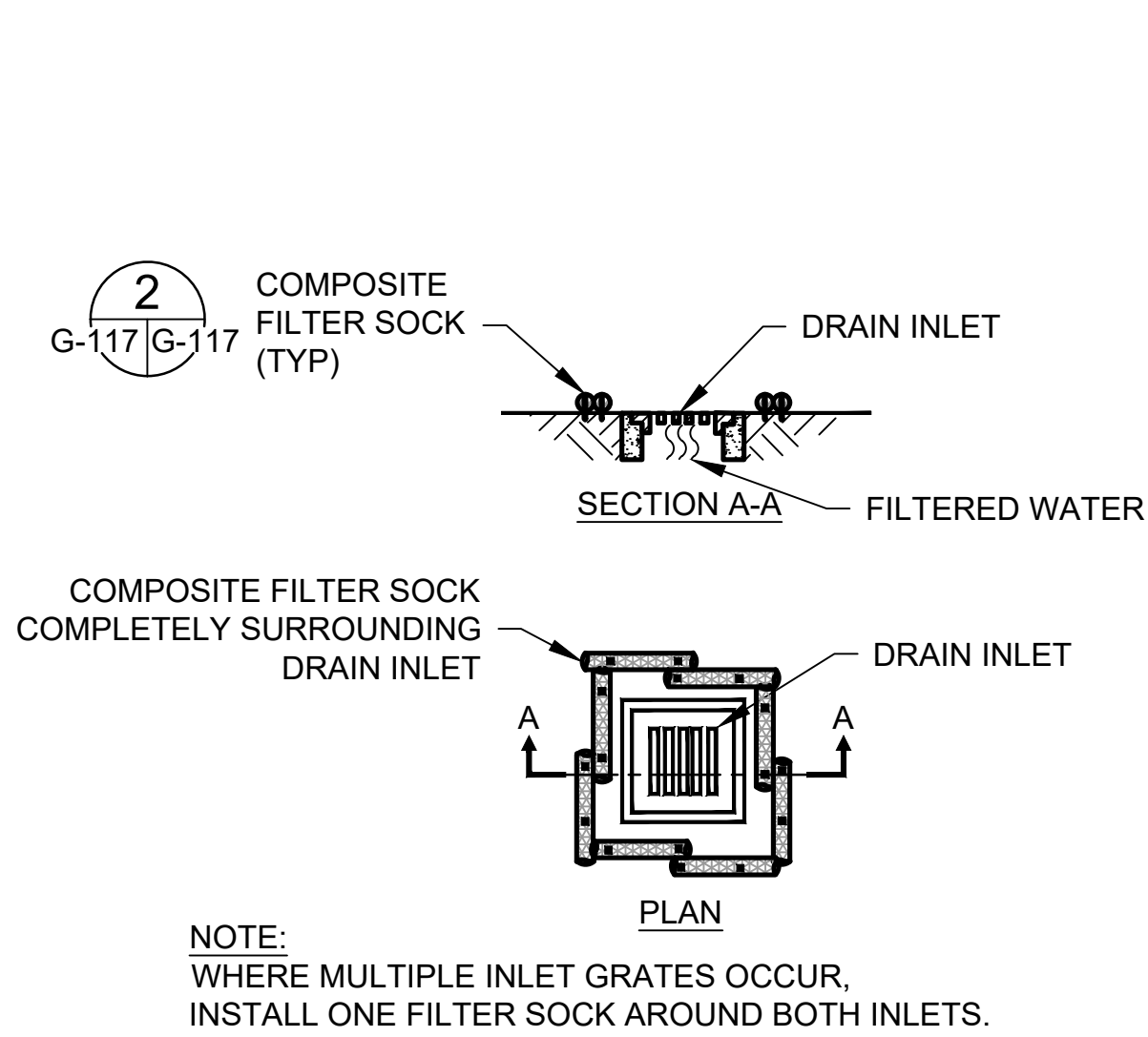
THE CONTRACTOR SHALL REQUEST AN INITIAL BMP INSPECTION BE CONDUCTED BY HDOT-A. THE INITIAL BMP INSPECTION WILL BE SUBJECT TO THE AVAILABILITY OF THE BMP INSPECTOR. NO CONSTRUCTION ACTIVITIES, EXCEPT FOR ACTIVITIES REQUIRED FOR THE INSTALLATION OF THE TEMPORARY BMP MEASURES, SHALL COMMENCE PRIOR TO THE INITIAL BMP INSPECTION AND THE CORRECTION OF ALL DEFICIENCIES THAT ARE NOTED DURING THE INSPECTION. ONLY AFTER ALL CORRECTIVE ACTIONS HAVE BEEN DOCUMENTED AND ACCEPTED BY HDOT-A SHALL CONSTRUCTION ACTIVITIES BE ALLOWED TO COMMENCE.
6.

INDEPENDENT THIRD-PARTY BMP INSPECTION WILL BE CONDUCTED MONTHLY. THE CONTRACTOR SHALL COMPLY WITH THESE INSPECTIONS AND CORRECTIVE ACTIONS IDENTIFIED WITHIN THE INSPECTION REPORT(S).
7.

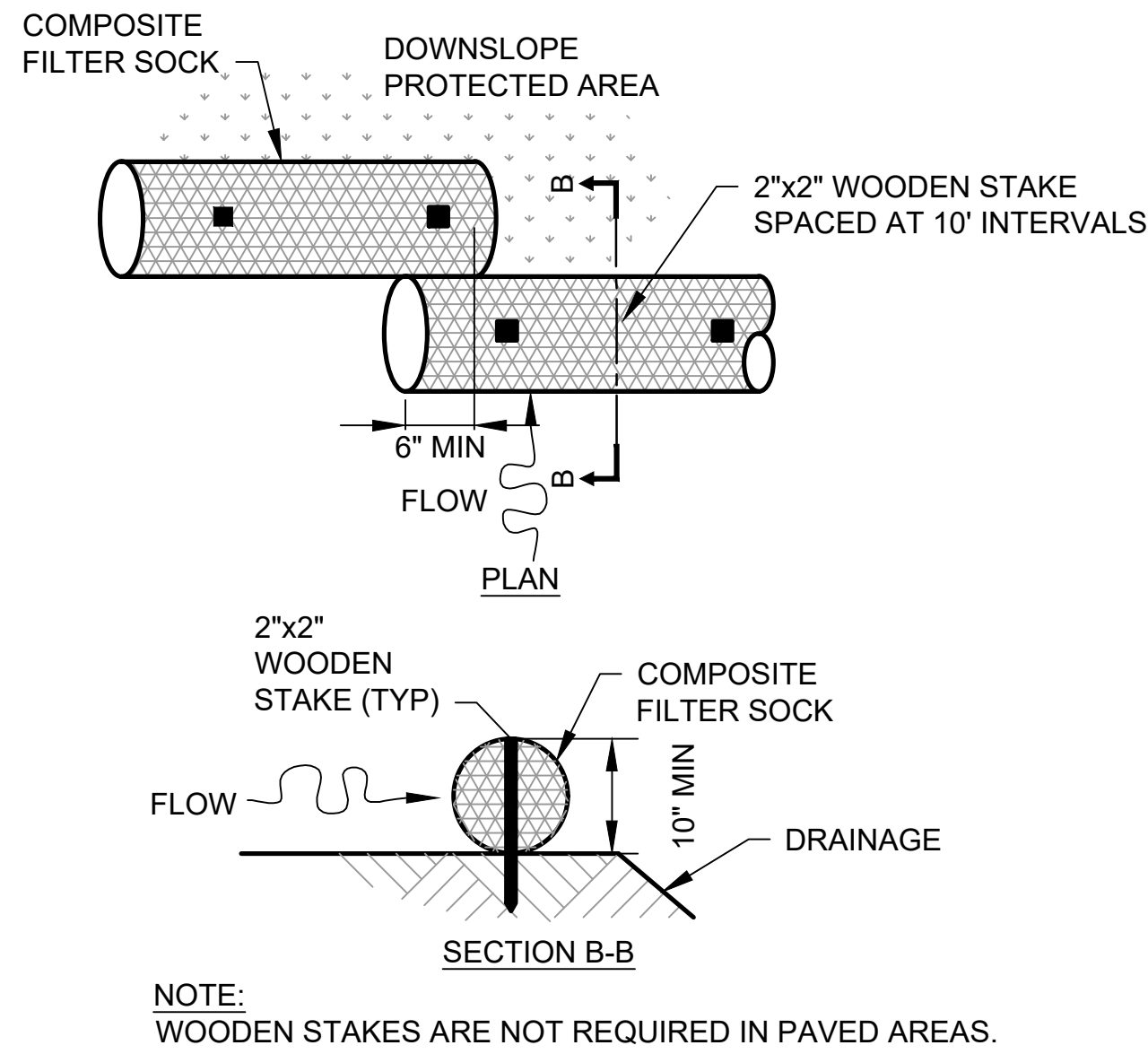
THE EXISTENCE AND LOCATION OF UNDERGROUND UTILITIES AND STRUCTURES SHOWN ON THE DRAWINGS ARE APPROXIMATE AND ARE BASED ON THE LATEST DATA AVAILABLE TO THE ENGINEER. THE INFORMATION SHOWN IS NOT GUARANTEED AS TO ITS ACCURACY. THE CONTRACTOR SHALL MAKE INDEPENDENT CHECKS AND CONSULT WITH UTILITY FIRMS TO VERIFY THE EXACT LOCATIONS OF THE UTILITIES AND STRUCTURES. THE CONTRACTOR SHALL NOT BE RELIEVED FROM ANY LIABILITY DUE TO DAMAGES RESULTING FROM HIS OPERATIONS.
8.

THE CONTRACTOR, AT HIS OWN EXPENSE, SHALL KEEP THE PROJECT AREA AND SURROUNDING AREA FREE FROM DUST NUISANCE. CONTRACTOR SHALL WATER STOCKPILES TO REDUCE DUST EMISSIONS. THE WORK SHALL BE IN CONFORMANCE WITH THE AIR POLLUTION CONTROL STANDARDS CONTAINED IN HAWAII ADMINISTRATIVE RULES: CHAPTER 11-60.1 "AIR POLLUTION CONTROL".
9.

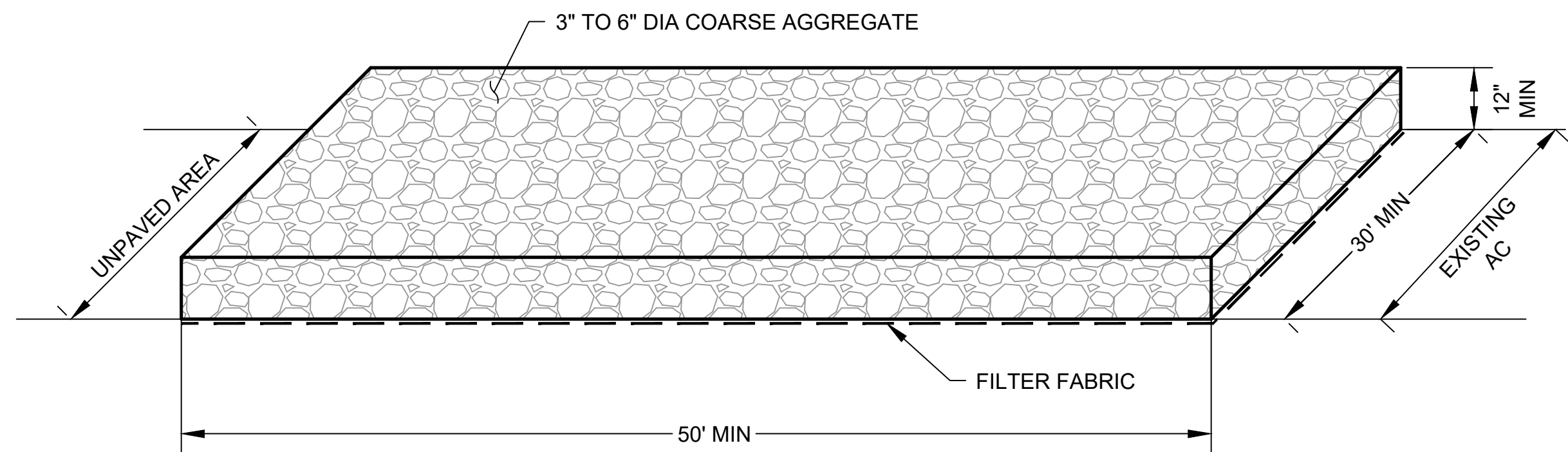
HDOT-A REQUIRES THAT STAFF WITH CONSTRUCTION PROGRAM RESPONSIBILITIES (E.G. CONTRACTOR, INSPECTORS, PLAN REVIEWERS) TO BE TRAINED ANNUALLY. THE TRAINING IS SPECIFIC TO HDOT-A ACTIVITIES, INCLUDING THE PROPER INSTALLATION AND MAINTENANCE OF ACCEPTED BMPs, RULES, AND PROCEDURES. THE PERTINENT TRAINING VIDEO IS AVAILABLE ON THE HDOT-A WEBSITE: [HTTP://HDOT.HAWAII.GOV/AIRPORTS/DOING-BUSINESS/ENGINEERING/ENVIRONMENTAL/CONSTRUCTION-SITE-RUNOFF-CONTROL-PROGRAM/](http://hdot.hawaii.gov/airports/doing-business/engineering/environmental/construction-site-runoff-control-program/). PLEASE SUBMIT THE COMPLETED TRAINING ROSTERS AND CONSTRUCTION TRAINING QUIZZES TO THE HDOT-A ENVIRONMENTAL SECTION (FAX: 808-838-8017) OR EMAIL TO DOT.AIR.ENVIRONMENTAL@HAWAII.GOV.



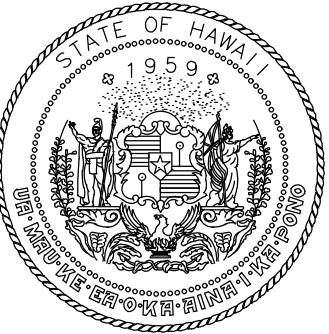
1 DRAIN INLET PROTECTION
G-114-G-116 G-117 SCALE: NTS



2 COMPOST FILTER SOCK
G-114, G-116, G-117 G-117 SCALE: NTS



3 STABILIZED CONSTRUCTION ENTRANCE
G-116 G-117 SCALE: NTS



Airports Division
DEPARTMENT OF TRANSPORTATION
STATE OF HAWAII



I HEREBY CERTIFY THAT THIS
WORK WAS PREPARED BY ME
OR UNDER MY SUPERVISION

Signature: 4/30/24
Expiration Date

DSGN.	DRWN.	CHKD.	APPD.
TR	NM	AC	SH

KEY PLAN / NOTES:

NO.	DATE	REVISIONS
-----	------	-----------

CONSTRUCTION
DOCUMENTS

NOVEMBER 2022
DATE

PROJECT TITLE :

RESURFACE RUNWAY 2-20

AT
KAHULUI AIRPORT
KAHULUI, MAUI, HAWAII

PROJECT NO.:

AM1022-21R

SHEET TITLE:

EROSION CONTROL
NOTES AND DETAILS

DATE :	DWG. NO.
11/2022	G-117
SHEET :	
17 OF 46 SHEETS	