

FED. ROAD DIST. NO.	STATE	PROJ. NO.	FISCAL YEAR	SHEET NO.	TOTAL SHEETS
HAWAII	HAW.	440B-01-11M	2011	7	16

GENERAL NOTES

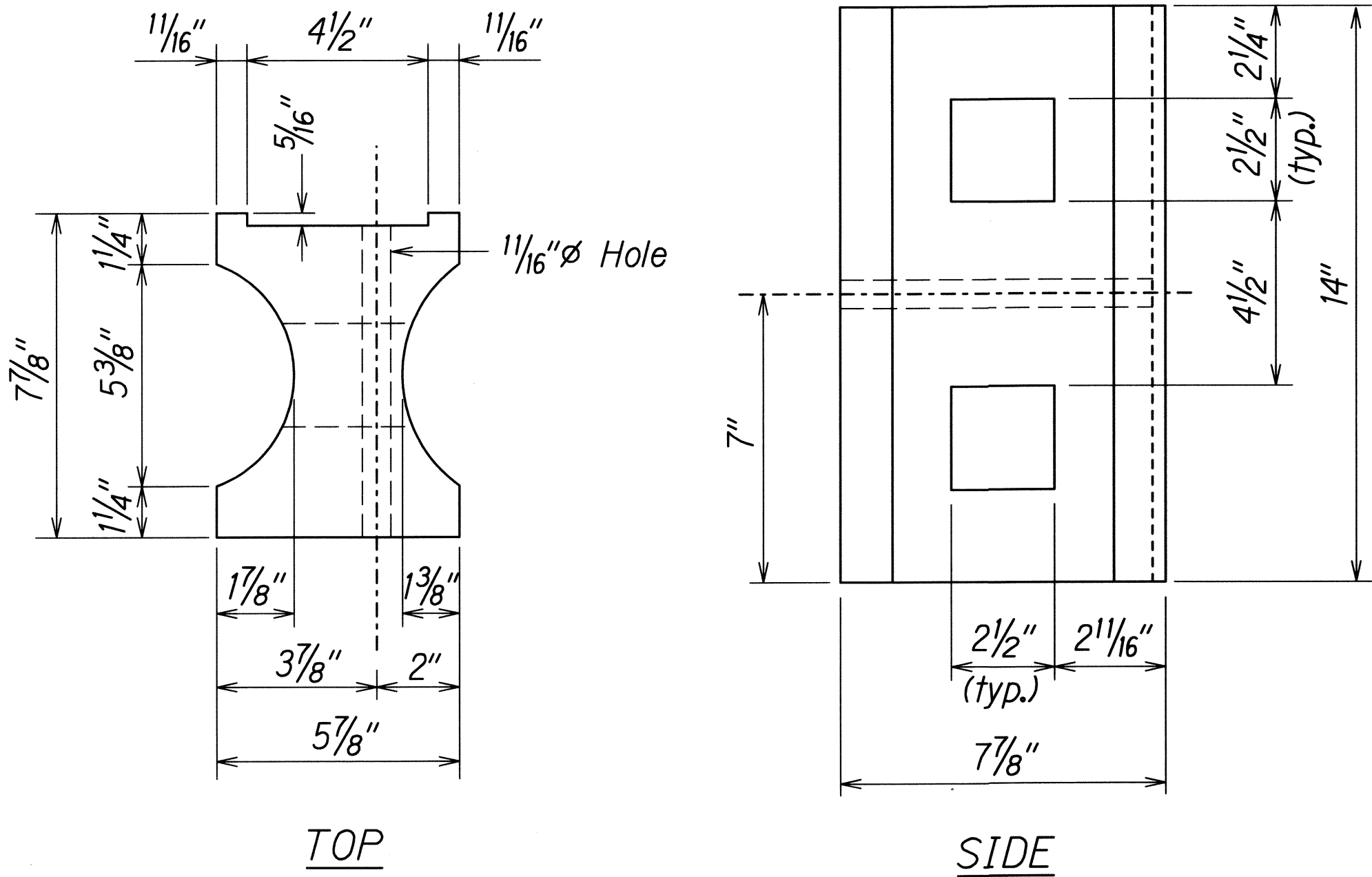
- All hardware, posts and fasteners shall be hot-dip zinc coated galvanized after fabrication. No punching, drilling or cutting will be permitted after galvanizing.
- Where conditions require, special post lengths in increments of 6 inches may be specified.
- All fasteners, posts, and rail elements (i.e. FBB03, PWE01, RWM02b, etc.) shall conform to the latest edition and amendments of "A Guide to Standardized Highway Barrier Rail Hardware", a report prepared and approved by the AASHTO-AGC-ARTBA Joint Cooperative Committee, Subcommittee On New Highway Materials, Task Force 13 Report. Dimensions of fastners, posts and rail elements have been converted from metric units into their present form.
- The Recycled Plastic Block or Offset Block shall be approved by the State.
- All new guardrail systems (system consists of total length of guardrail including both end treatments) shall include the Additional Paved Area.
- After the guardrail posts are installed in the paved area, the Contractor shall fill/seal around each guardrail post and all cracks in the paved area caused during the guardrail post installation. If required by the inspector/engineer, the Contractor shall tamper the paved area around the guardrail post prior to filling/sealing. All costs associated with this work shall not be paid for separately, but shall be considered incidental to the various guardrail items.
- When standards for the fill slope area cannot be met, a site specific, engineer approved design may be used.
- New A.C. pavement at guardrails shall extend 6 feet longitudinally beyond terminal ends.
- Reflector Markers (RM-5) mounted on guardrails shall be spaced every 25 feet. Spacing of RM-5's on Horizontal Curves shall comply with Table III-1 of the MUTCD. RM-5's shall not be installed on Terminal Sections. RM-5 on new guardrail shall be incidental to guardrail pay item.

GUARDRAIL TYPE	DIMENSION	
	H	A
Strong Post W-Beam	1'-9 5/8"	1'-6"
Strong Post Rubrail (W-Beam)	2'-0"	1'-6"
Modified or Strong Post Thrie Beam	2'-0"	2'-0"

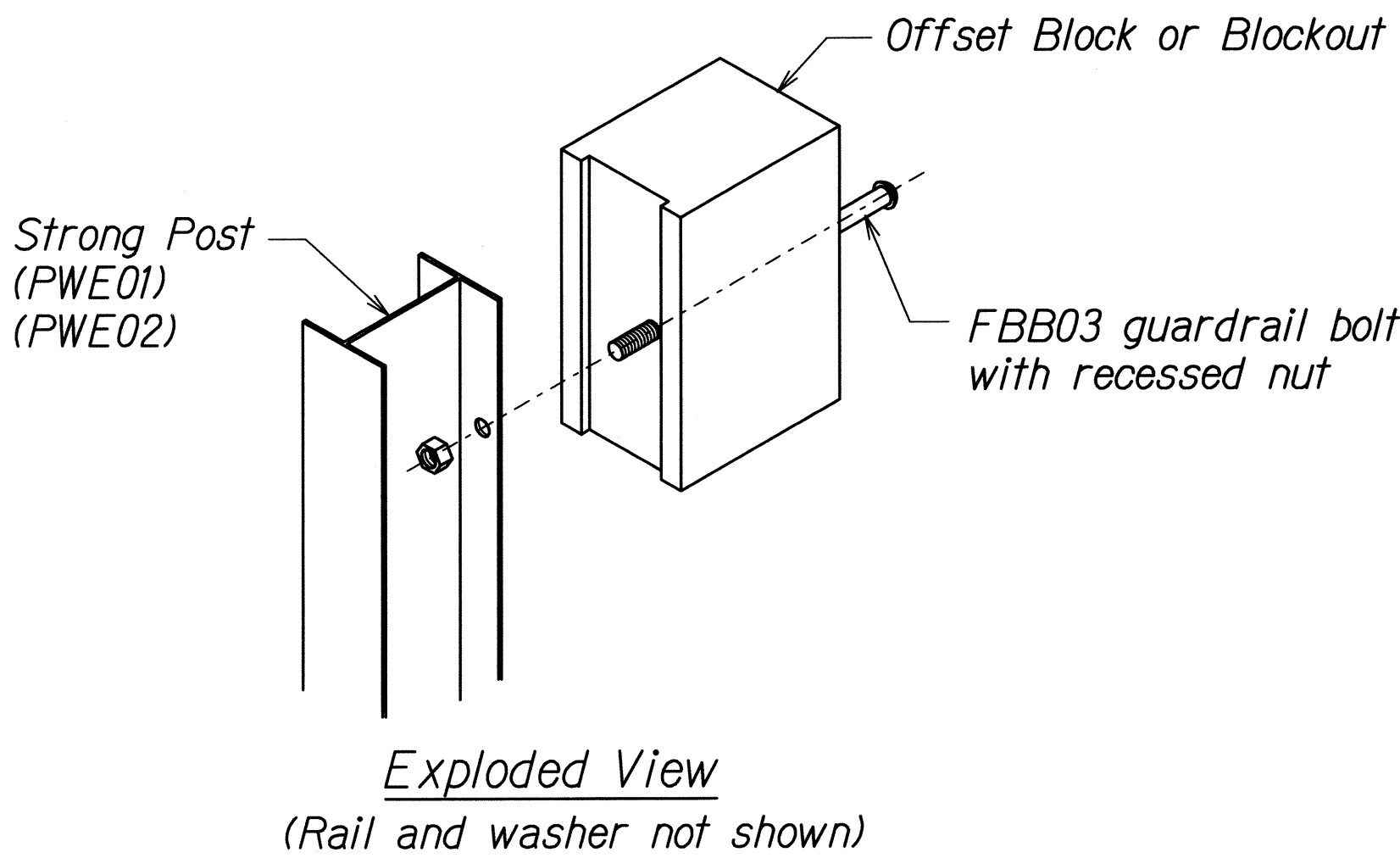
STATE OF HAWAII  
DEPARTMENT OF TRANSPORTATION  
HIGHWAYS DIVISION

**GUARDRAIL DETAILS & NOTES**  
MANELE ROAD REPAIR & MAINTENANCE  
At Various Locations  
Project No. 440B-01-11M  
Scale: NTS  
Date: June, 2011

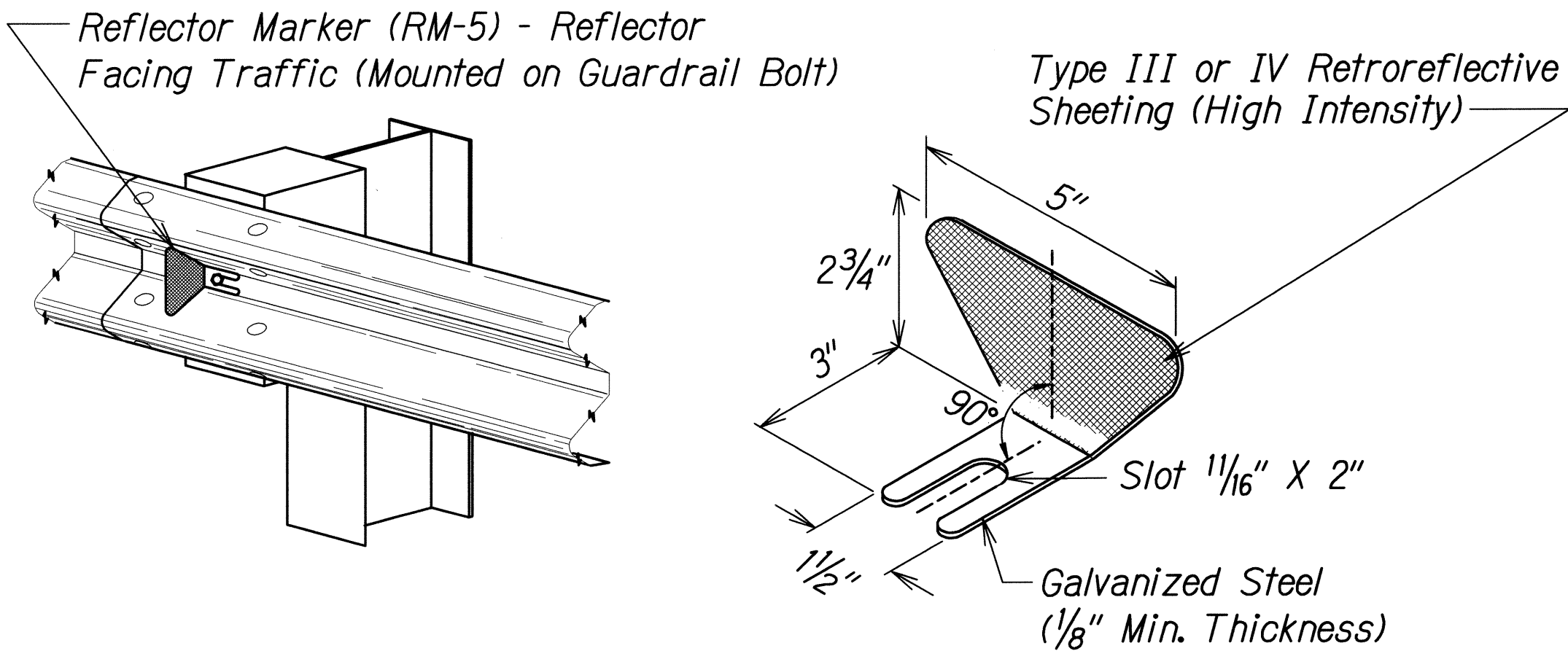
SHEET No. 1 OF 2 SHEETS



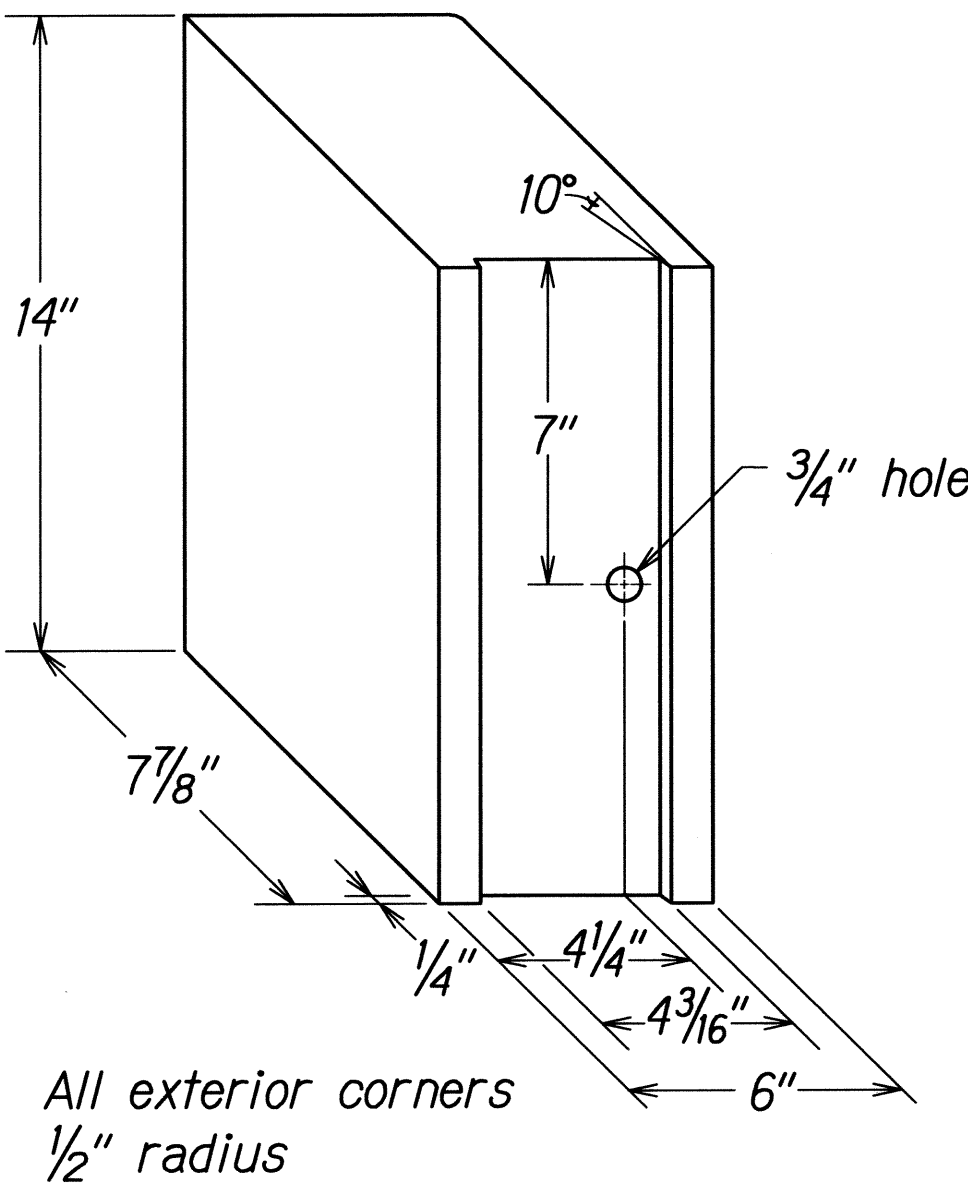
TOP  
SIDE  
RECYCLED PLASTIC BLOCKOUT (TYPE I)



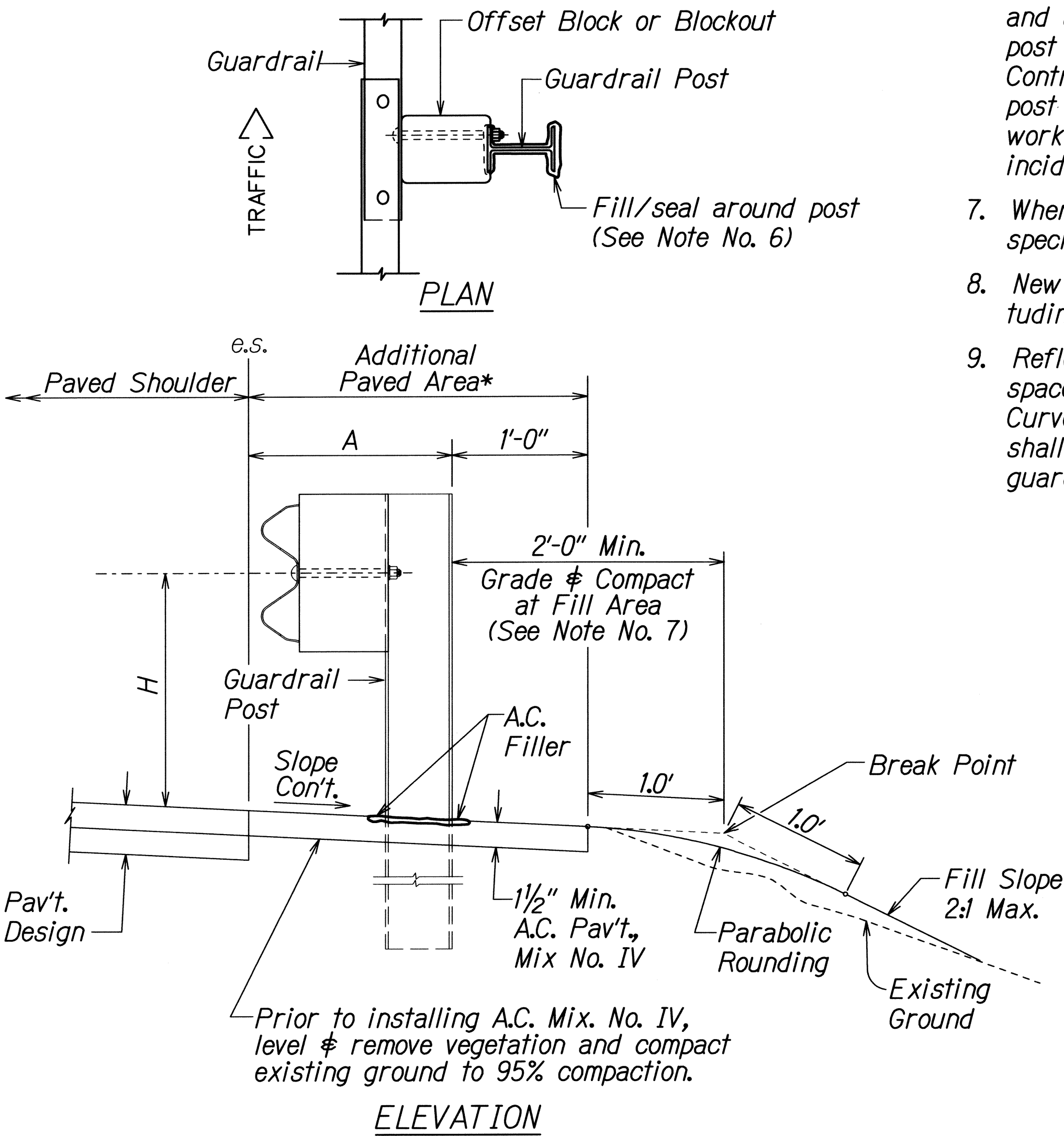
STEEL POST AND BLOCK DETAIL



REFLECTOR MARKER (RM-5) DETAIL AND TYPICAL INSTALLATION



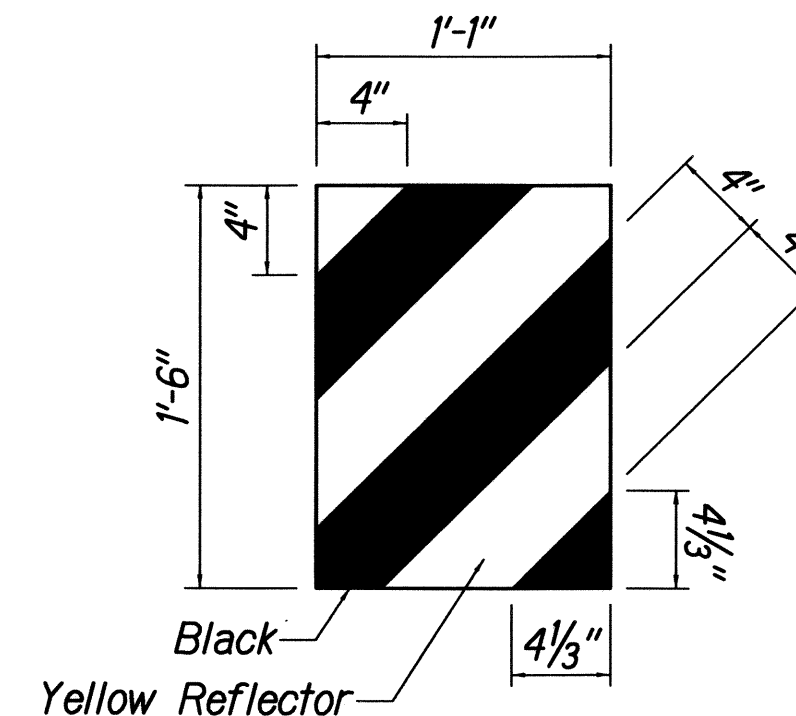
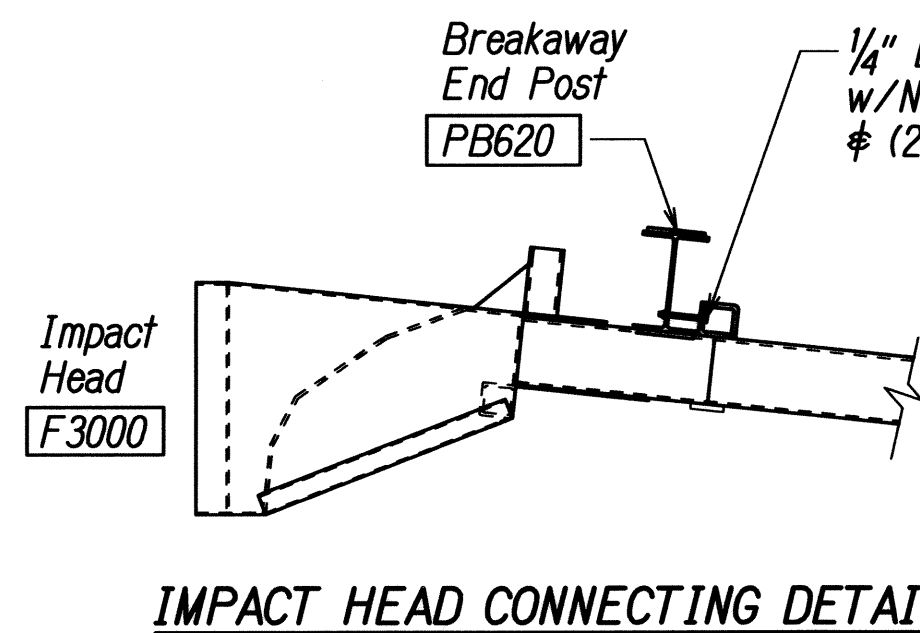
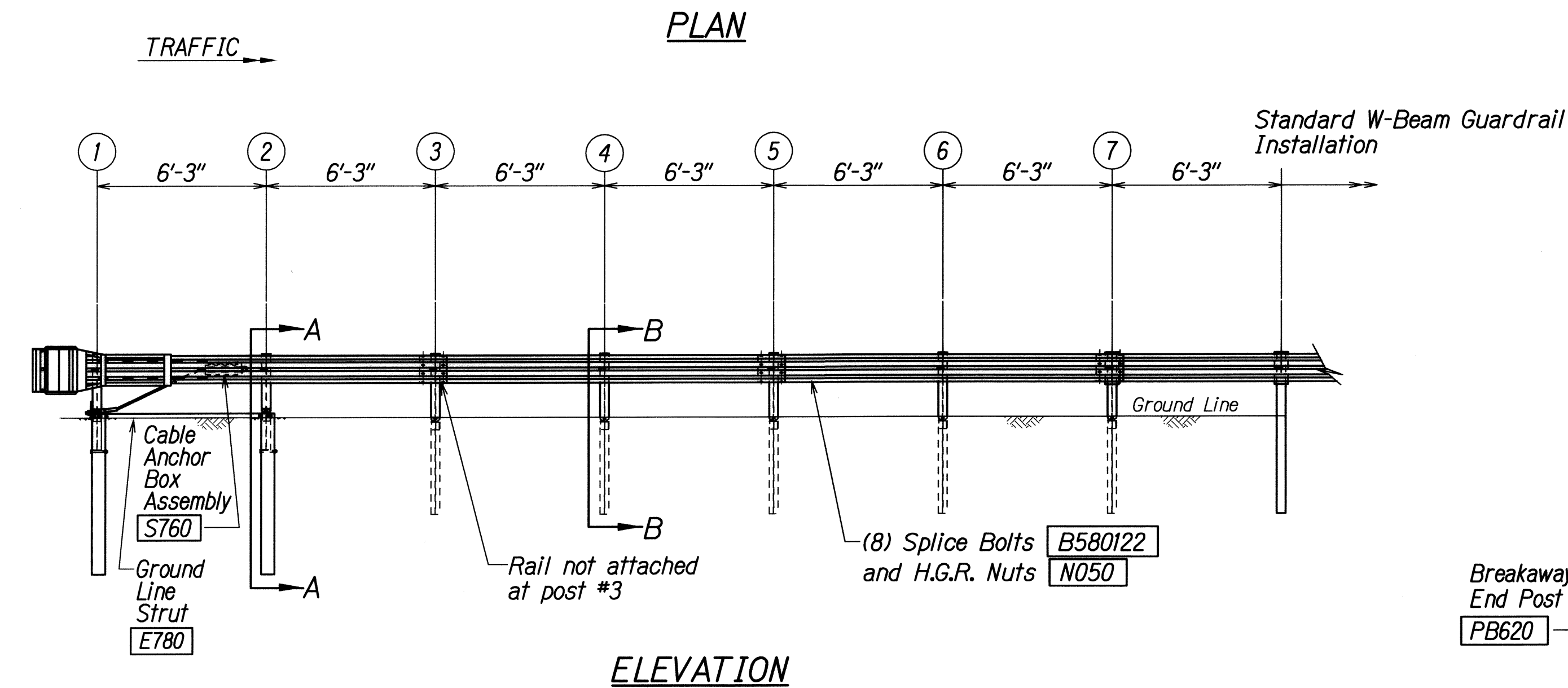
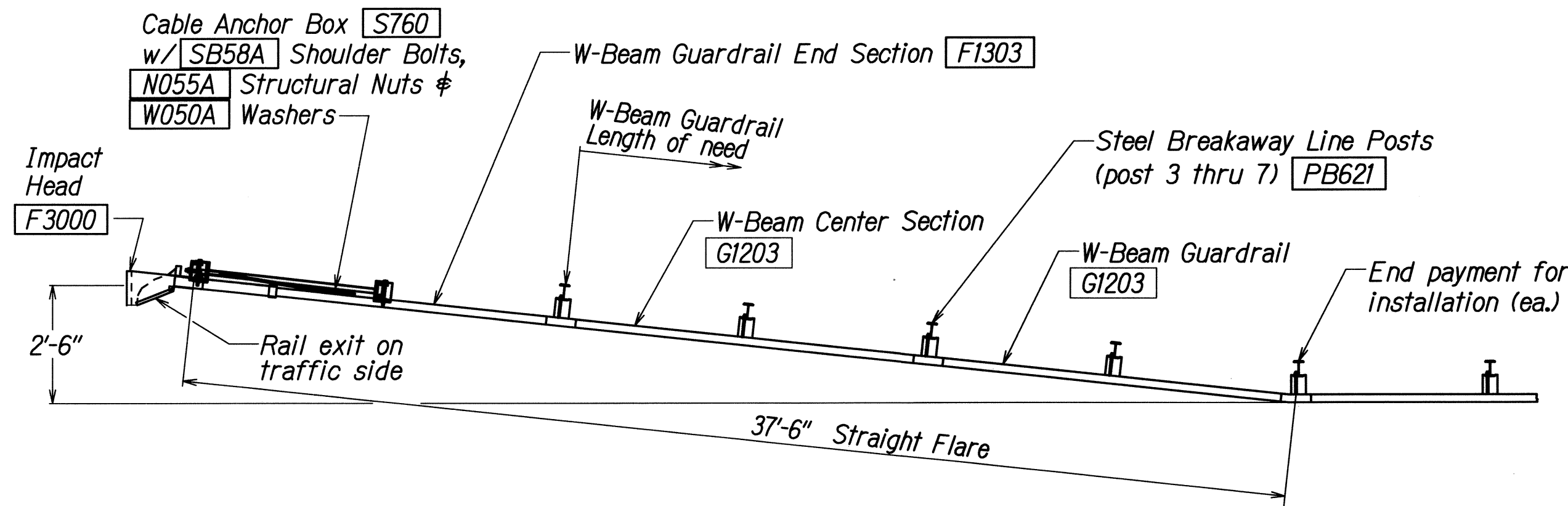
RECYCLED POLYETHYLENE  
OFFSET BLOCK (TYPE II)



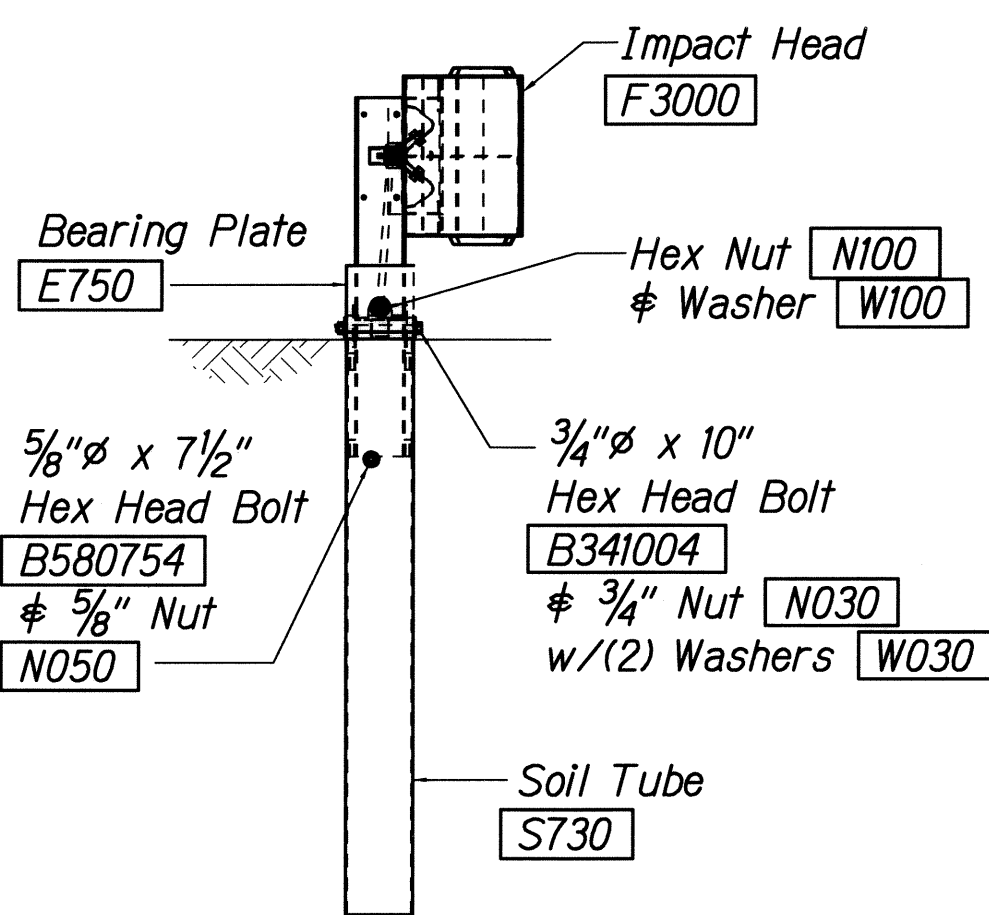
TYPICAL GUARDRAIL INSTALLATION

DESIGNED BY	DATE
DRAWN BY	
CHECKED BY	
IN CHARGE	
PROJECT NO.	
SHEET NO.	
TOTAL SHEETS	

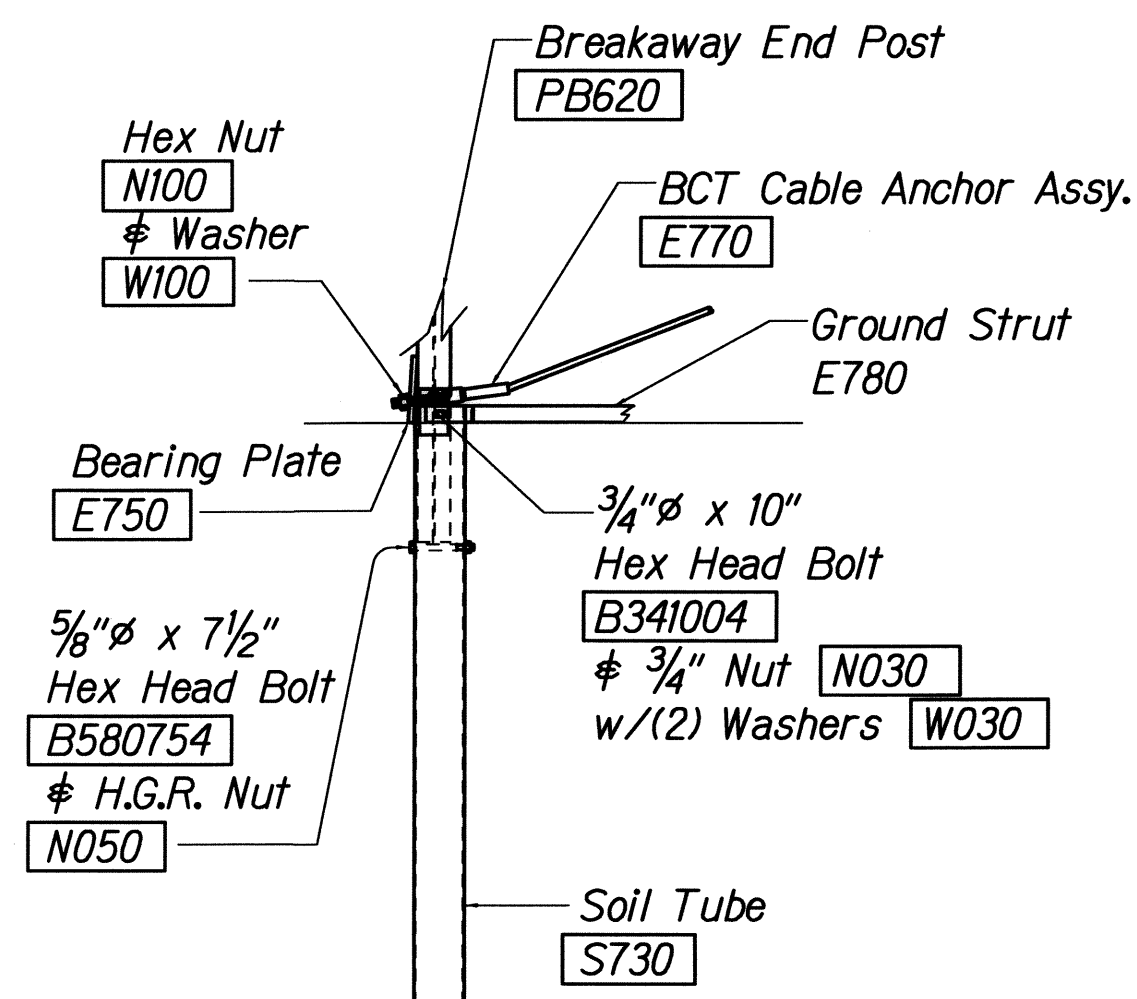
18/21/01 tdruby/guardrail/te50rev.dgn (standard plan TE-50 r09/01/00)



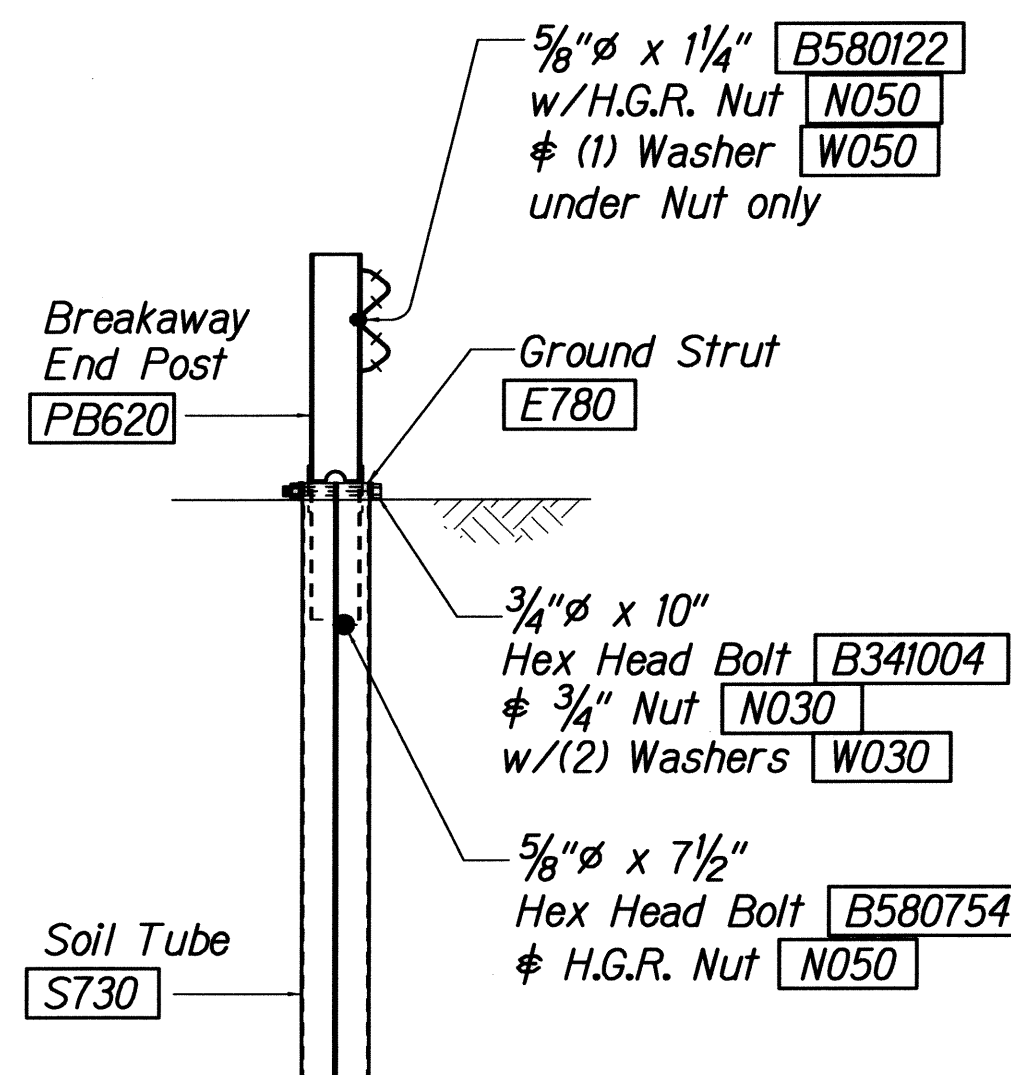
**IHRM(R)  
IMPACT HEAD REFLECTOR  
MARKER INSERT  
DETAIL**



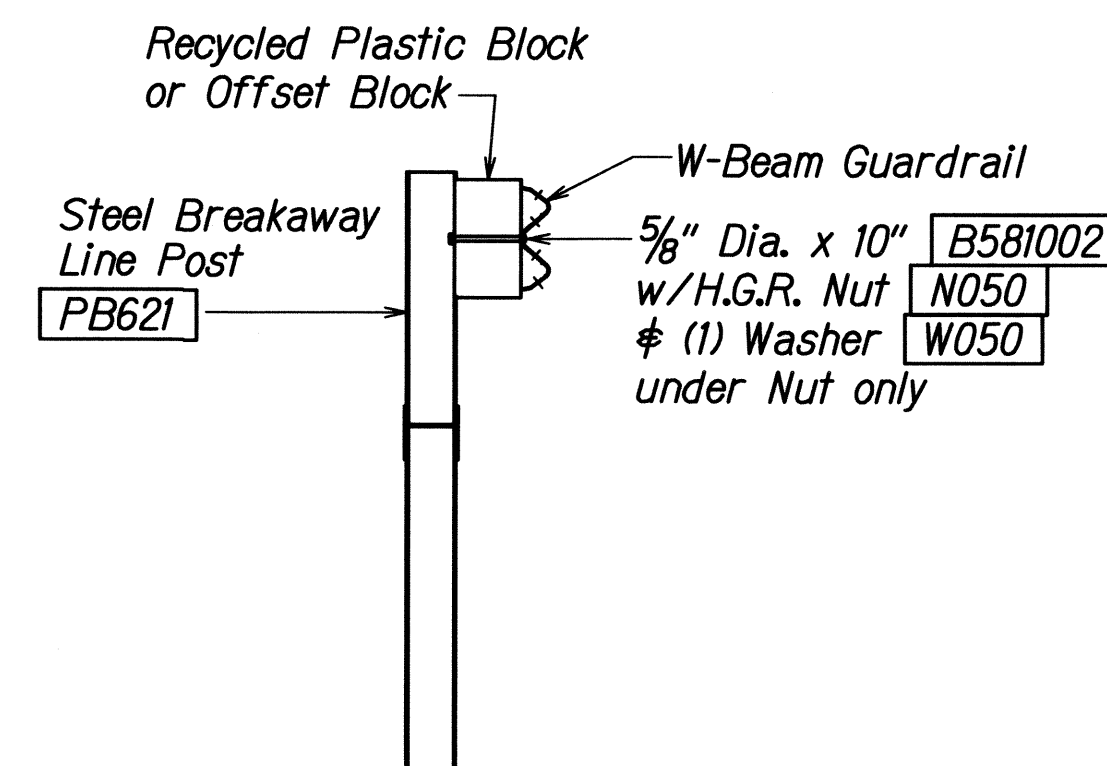
**FRONT VIEW OF POST 1**



**PARTIAL VIEW OF POST 1**



**SECTION A-A  
at Post #2**



**SECTION B-B  
(Typical @ Post 3 - 7)  
NOTE: RAIL NOT BOLTED @ POST #3**

**GENERAL NOTES**

1. Breakaway steel posts are required with the FLEAT Terminal.
2. All bolts, nuts, cable assemblies, cable anchors and bearing plates shall be galvanized.
3. The soil tubes shall not protrude more than 4" above ground (measured along a 5' cord). Site grading may be necessary to meet this requirement.
4. The soil tubes may be driven with an approved driving head. Soil tubes shall not be driven with the post in the tube. If the tubes are placed in drilled holes, the backfill material must be satisfactorily compacted to prevent settlement.
5. When rock is encountered during excavation, a 12" Dia. post hole, 20" deep may be used if approved by the engineer. Granular material will be placed in the bottom of the hole approx. 2 1/2" deep to provide drainage. The soil tubes will be field cut to length, placed in the hole and backfilled with adequately compacted material excavated from the hole.
6. The breakaway cable assembly must be taut. A locking device, (vice grips or channel lock pliers) should be used to prevent the cable from twisting when tightening nuts.
7. (R) or (L) indicates right or left Impact Head Reflector Marker (IHRM). Providing and installing of IHRM shall be considered incidental to end treatment.
8. The stripes for IHRM shall slope downward at an angle of 45° towards the side of the end treatment that traffic is to pass.

FED. ROAD DIST. NO.	STATE	PROJ. NO.	FISCAL YEAR	SHEET NO.	TOTAL SHEETS
HAWAII	HAW.	440B-01-11M	2011	8	16

ITEM NO.	QTY.	BILL OF MATERIALS
F3000	1	IMPACT HEAD
F1303	1	W-BEAM GUARDRAIL END SECTION, 12 GA.
G1203	2	W-BEAM GUARDRAIL, 12 GA.
S730	2	*FOUNDATION SOIL TUBE, 6" x 8" x 72"
E750	1	BEARING PLATE
S760	1	CABLE ANCHOR BOX
E770	1	BCT CABLE ANCHOR ASSEMBLY
E780	1	GROUND STRUT
PB620	2	STEEL BREAKAWAY END POST
PB621	5	STEEL BREAKAWAY LINE POST
	5	RECYCLED PLASTIC BLOCKOUT OR OFFSET BLOCK
	1	IMPACT HEAD REFLECTOR MARKER - IHRM(R) OR (L)
<b>HARDWARE</b>		
B580122	25	5/8" Dia. x 1 1/4" SPLICE BOLT, POST #2
B580754	2	5/8" Dia. x 7 1/2" HEX BOLT
B341004	2	3/4" Dia. x 10" HEX BOLT
B581002	5	5/8" Dia. x 10" H.G.R. BOLT (POST 3 THRU 7)
N050	32	5/8" Dia. H.G.R. NUT (SPLICE 24, SOIL TUBES 2, POST 2 THRU 7, 6)
N030	2	3/4" Dia. HEX NUT
W050	6	H.G.R. WASHER
W030	4	3/4" ID WASHER
N100	2	1" ANCHOR CABLE HEX NUT
W100	2	1" ANCHOR CABLE WASHER
B140404	2	1/4" x 4" HEX BOLT
N014	2	1/4" HEX NUT
W014	4	1/4" WASHER
SB58A	8	CABLE ANCHOR BOX SHOULDER BOLT
N055A	8	1/2" A325 STRUCTURAL NUT
W050A	16	1 1/16" OD x 3/16" ID A325 STR. WASHER

Foundation Tube Options For Posts 1 & 2  
 \*6'-0" Split Foundation Tubes S730  
 \*6'-0" Solid Foundation Tubes E731  
 \*5'-0" Foundation Tubes S735 W/Soil Plates SP600  
 \*4'-6" Foundation Tubes E735 W/Soil Plates SP600

STATE OF HAWAII  
 DEPARTMENT OF TRANSPORTATION  
 HIGHWAYS DIVISION  
**FLEAT-350**  
**FLARED ENERGY ABSORBING TERMINAL**  
**MANELE ROAD REPAIR & MAINTENANCE**  
 At Various Locations  
 Project No. 440B-01-11M  
 Not to Scale Date: June, 2011  
 SHEET No. 1 OF 1 SHEETS