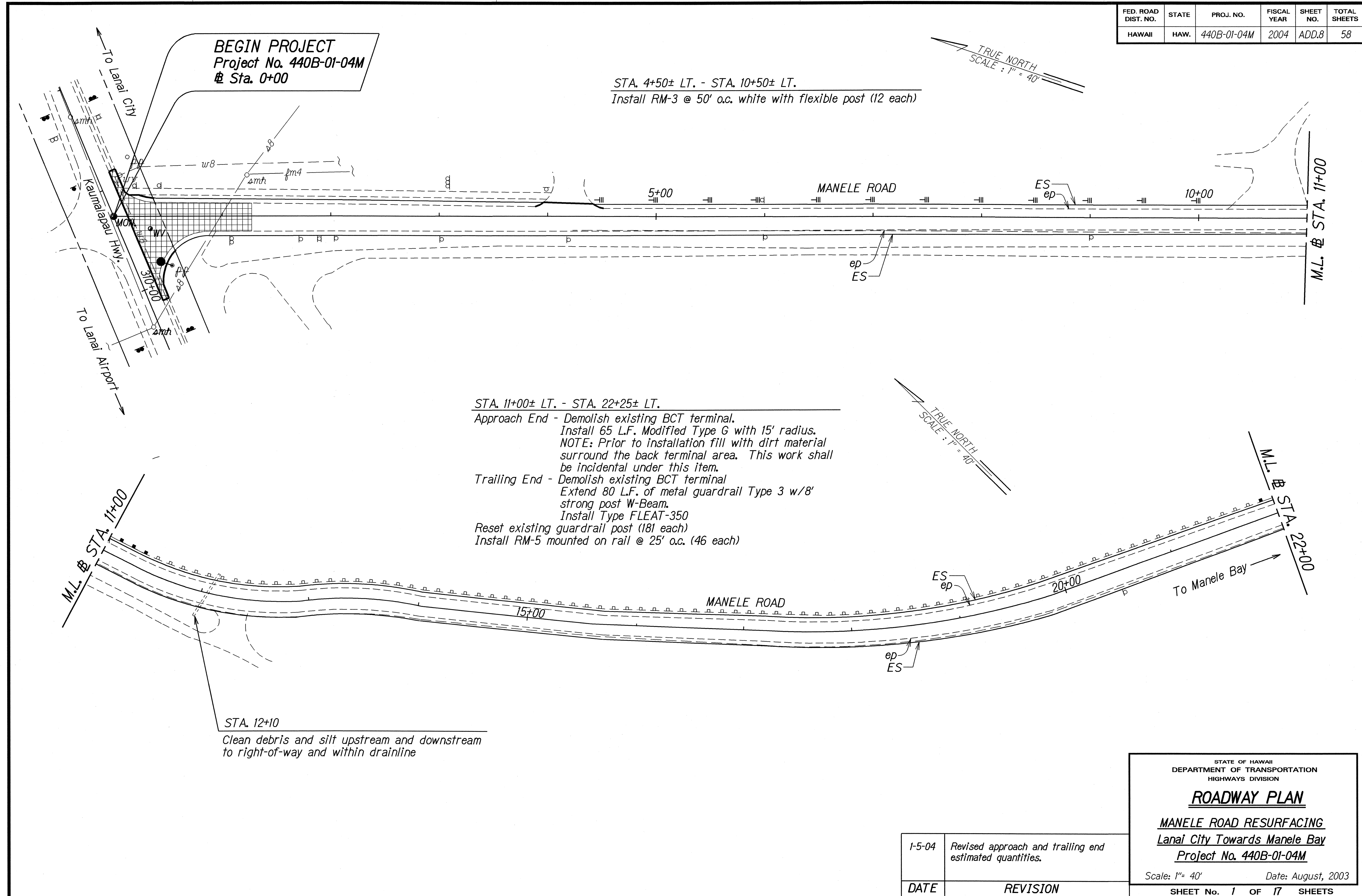
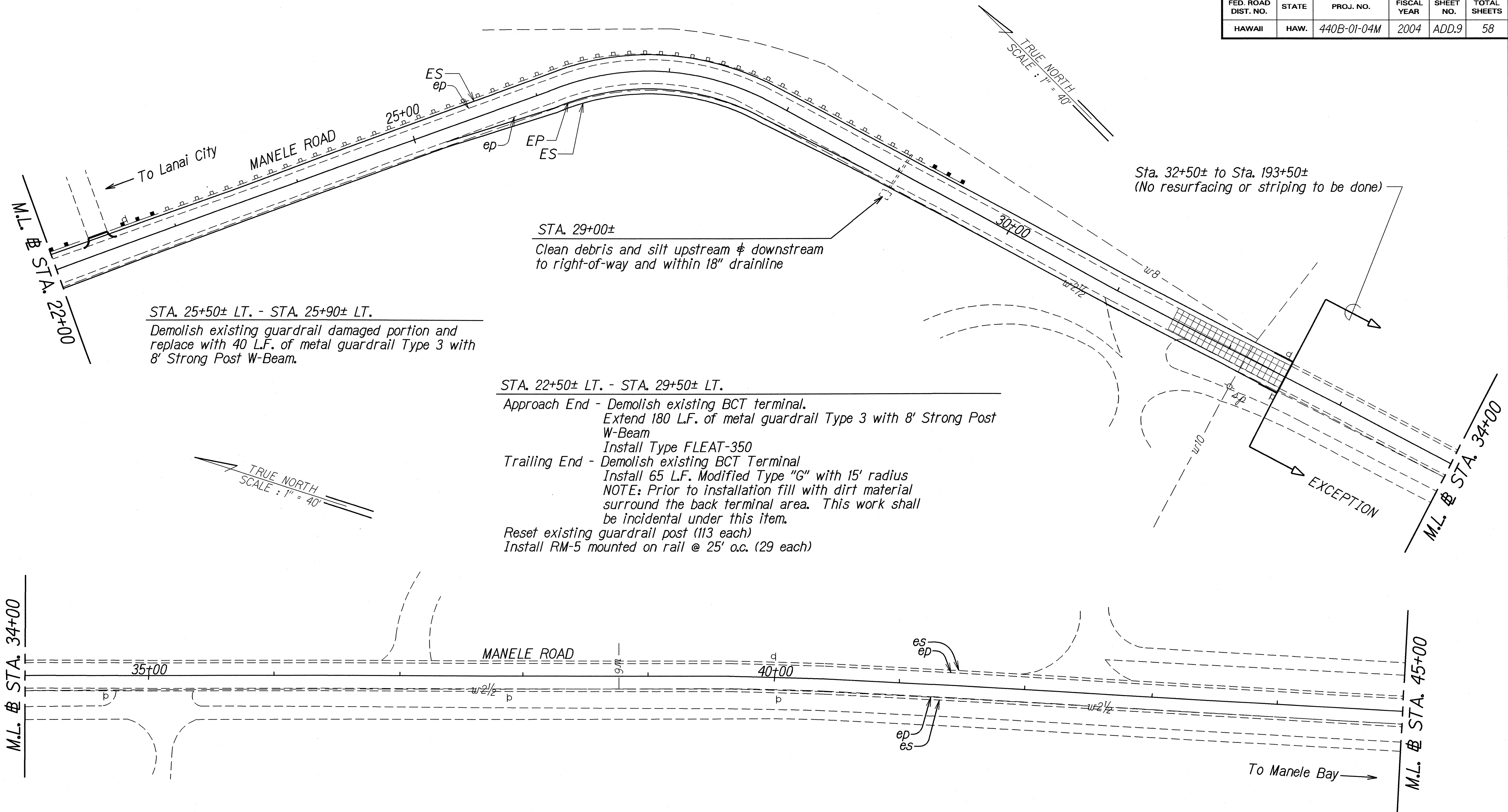


FED. ROAD DIST. NO.	STATE	PROJ. NO.	FISCAL YEAR	SHEET NO.	TOTAL SHEETS
HAWAII	HAW.	440B-01-04M	2004	ADD.8	58



ORIGINAL PLAN	SURVEY PLOTTED BY _____	DATE _____
NOTE BOOK	DRAWN BY <u>40</u>	<u>8/03</u>
met, 1st	TRACED BY _____	_____
4-manip, 1st	DESIGNED BY <u>or</u>	_____
	QUANTITIES BY _____	_____
	CHECKED BY _____	_____

FED. ROAD DIST. NO.	STATE	PROJ. NO.	FISCAL YEAR	SHEET NO.	TOTAL SHEETS
HAWAII	HAW.	440B-01-04M	2004	ADD.9	58



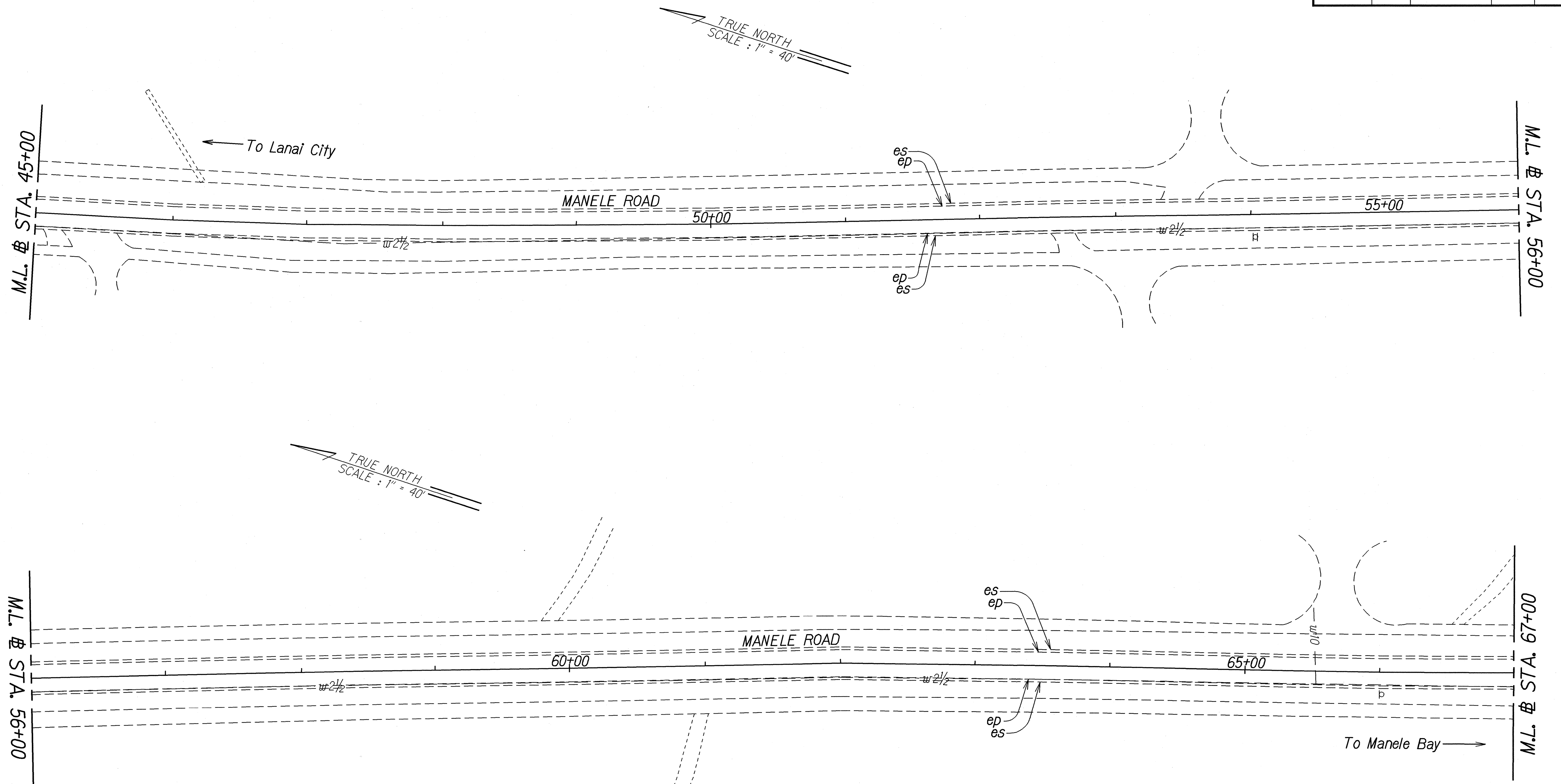
ORIGINAL PLAN	DATE	8/03
DESIGNED BY	TRACED BY	
NOTED BY	QUANTITIES BY	
CHECKED BY		

1-5-04	Revised approach and trailing end quantities. Added quantity for metal guardrail Type 3 Strong Post W-Beam. Widened shoulder from Sta. 26+00 Rt. to Sta. 28+00 Rt.
--------	--

DATE	REVISION
------	----------

STATE OF HAWAII DEPARTMENT OF TRANSPORTATION HIGHWAYS DIVISION
ROADWAY PLAN
MANELE ROAD RESURFACING
Lanai City Towards Manele Bay
Project No. 440B-01-04M
Scale: 1"= 40' Date: August, 2003
SHEET No. 2 OF 17 SHEETS

FED. ROAD DIST. NO.	STATE	PROJ. NO.	FISCAL YEAR	SHEET NO.	TOTAL SHEETS
HAWAII	HAW.	440B-01-04M	2004	10	58



ORIGINAL PLAN	SURVEY PLOTTED BY	DATE
NOTED	DRAWN BY	8/2/03
DESIGNED BY		
QUANTITIES BY		
CHECKED BY		

STATE OF HAWAII
DEPARTMENT OF TRANSPORTATION
HIGHWAYS DIVISION

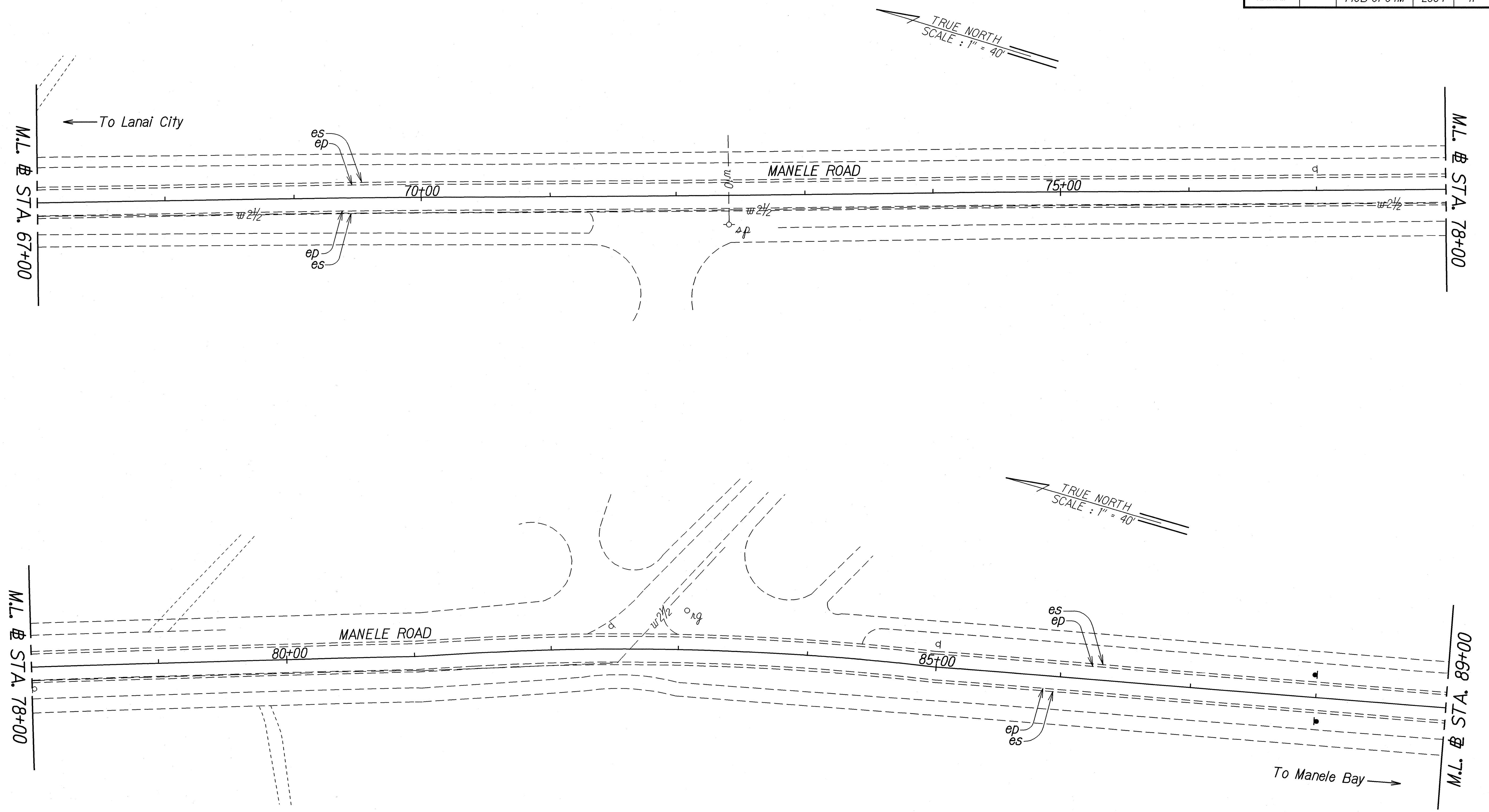
ROADWAY PLAN

MANELE ROAD RESURFACING
Lanai City Towards Manele Bay
Project No. 440B-01-04M

Scale: 1" = 40' Date: August, 2003

SHEET No. 3 OF 17 SHEETS

FED. ROAD DIST. NO.	STATE	PROJ. NO.	FISCAL YEAR	SHEET NO.	TOTAL SHEETS
HAWAII	HAW.	440B-01-04M	2004	11	58



ORIGINAL PLAN	SURVEY PLOTTED BY	DATE
NOTE BOOK	DRAWN BY	8/03
DESIGNED BY	CHECKED BY	
QUANTITIES BY		
CHECKED BY		

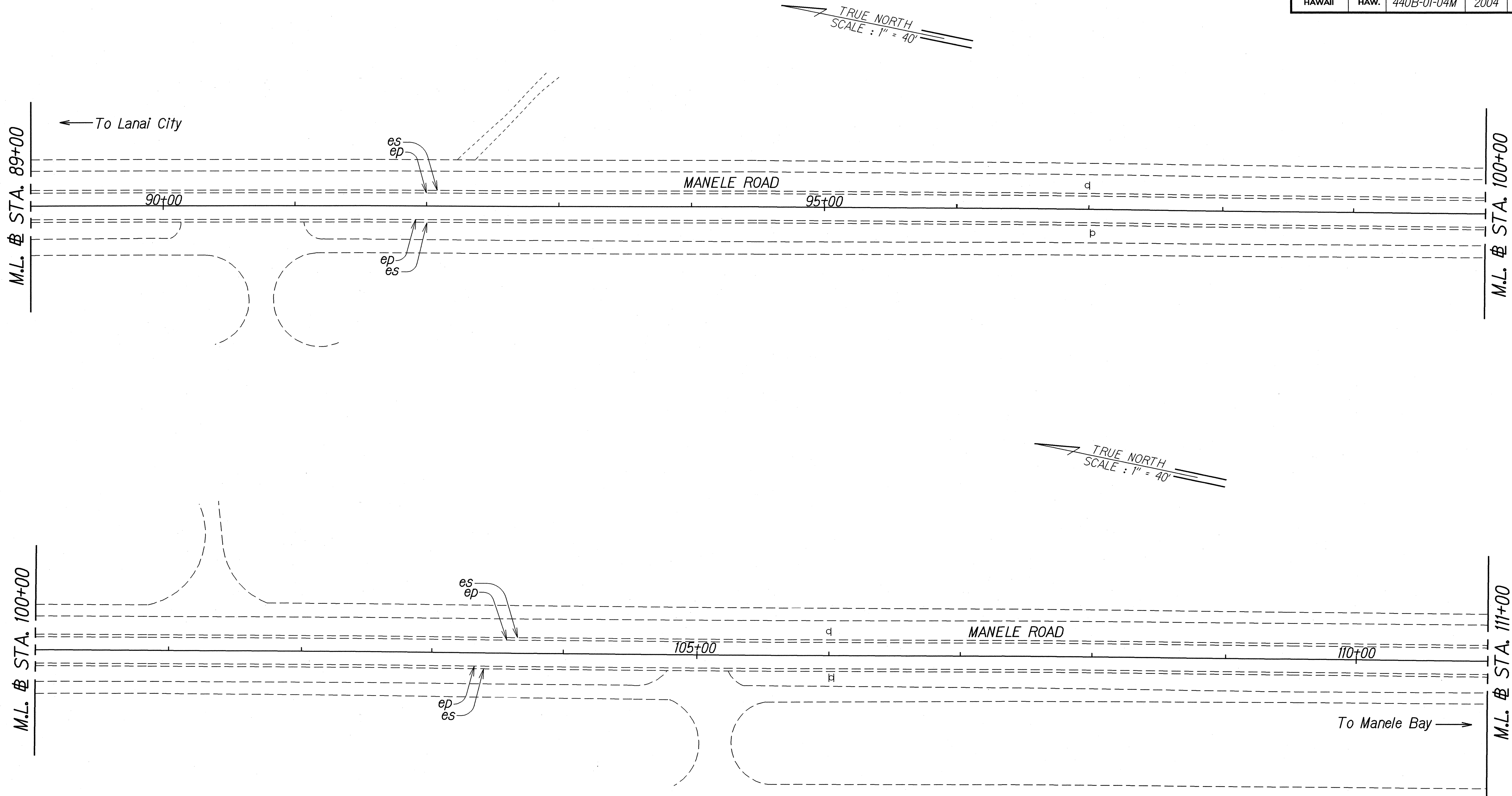
STATE OF HAWAII
DEPARTMENT OF TRANSPORTATION
HIGHWAYS DIVISION

ROADWAY PLAN

MANELE ROAD RESURFACING
Lanai City Towards Manele Bay
Project No. 440B-01-04M

Scale: 1"= 40' Date: August, 2003
SHEET No. 4 OF 17 SHEETS

FED. ROAD DIST. NO.	STATE	PROJ. NO.	FISCAL YEAR	SHEET NO.	TOTAL SHEETS
HAWAII	HAW.	440B-01-04M	2004	12	58



ORIGINAL PLAN	SURVEY PLOTTED BY	DATE
NOTED BY	DRAWN BY	8/03
DESIGNED BY	CHECKED BY	
CHECKED BY		

STATE OF HAWAII
DEPARTMENT OF TRANSPORTATION
HIGHWAYS DIVISION

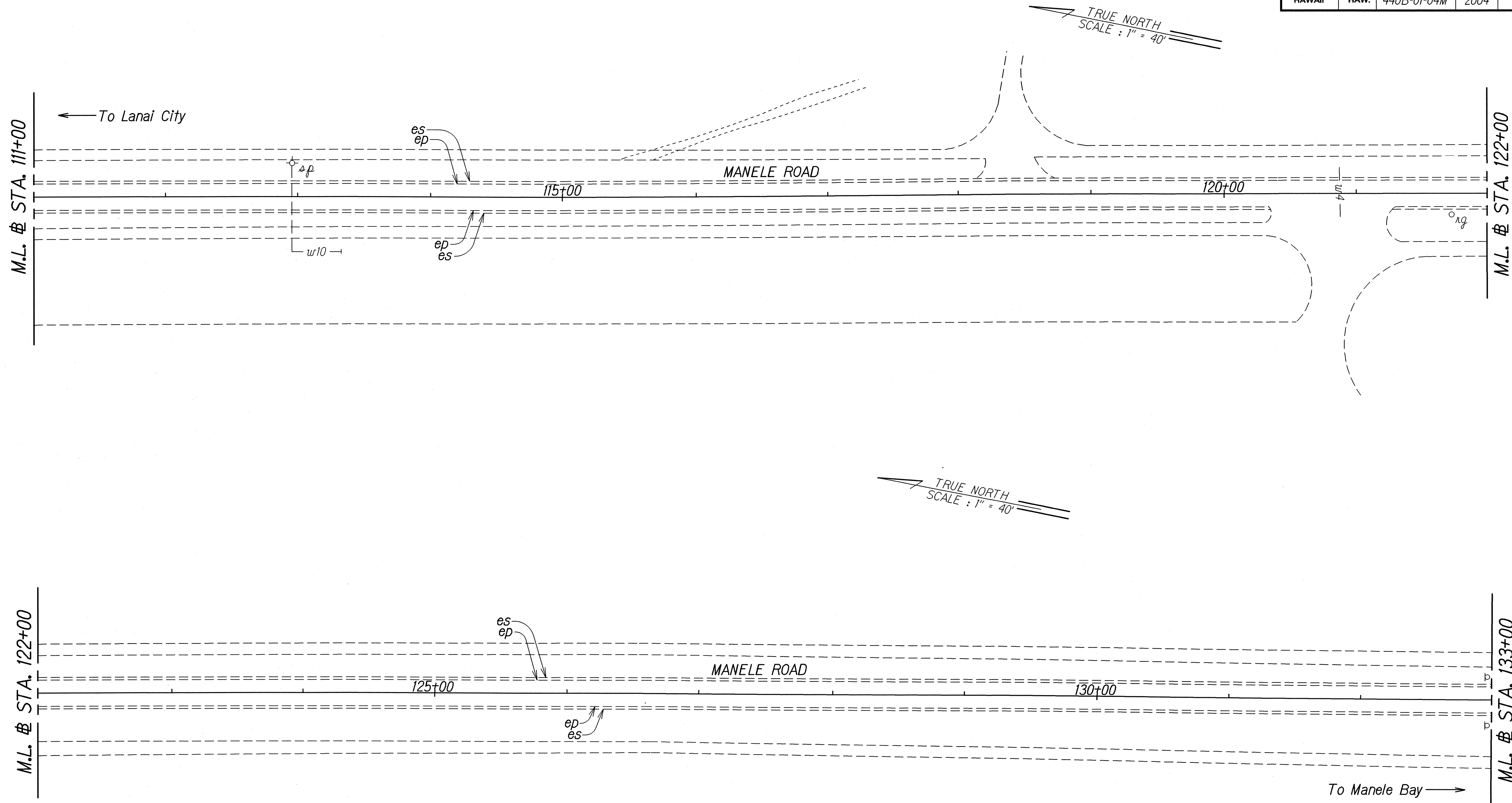
ROADWAY PLAN

MANELE ROAD RESURFACING
Lanai City Towards Manele Bay
Project No. 440B-01-04M

Scale: 1"= 40' Date: August, 2003

SHEET No. 5 OF 17 SHEETS

FED. ROAD DIST. NO.	STATE	PROJ. NO.	FISCAL YEAR	SHEET NO.	TOTAL SHEETS
HAWAII	HAW.	440B-01-04M	2004	13	58



ORIGINAL PLAN	SURVEY PLOTTED BY	DATE
NOTED BOOK	DRAWN BY	8/03
DESIGNED BY	CHECKED BY	
CHECKED BY		

STATE OF HAWAII
DEPARTMENT OF TRANSPORTATION
HIGHWAYS DIVISION

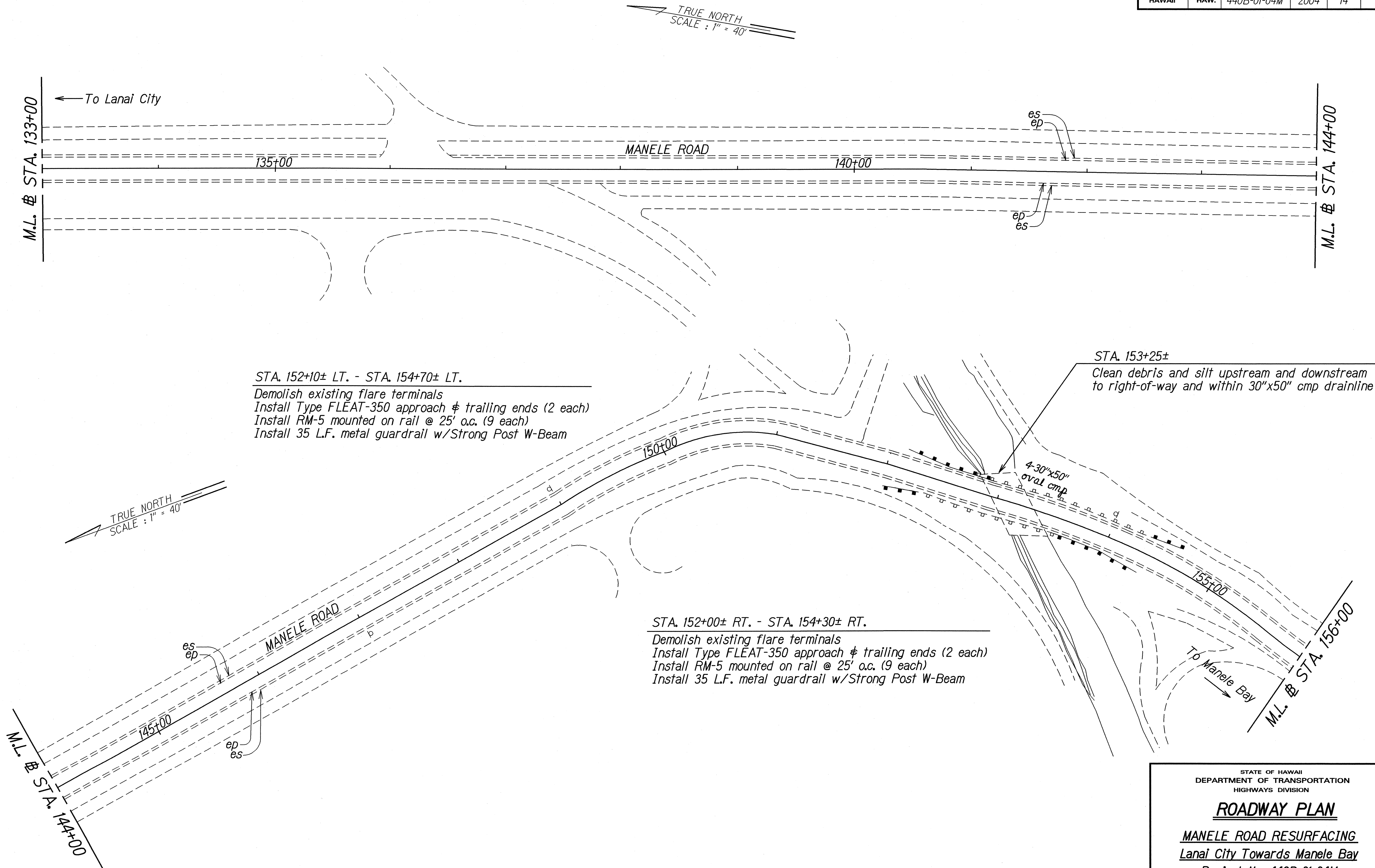
ROADWAY PLAN

MANELE ROAD RESURFACING
Lanai City Towards Manele Bay
Project No. 440B-01-04M

Scale: 1"= 40'
Date: August, 2003

SHEET No. 6 OF 17 SHEETS

FED. ROAD DIST. NO.	STATE	PROJ. NO.	FISCAL YEAR	SHEET NO.	TOTAL SHEETS
HAWAII	HAW.	440B-01-04M	2004	14	58



ORIGINAL PLAN	DATE 8/03
DESIGNED BY	
TRACED BY	
NOTED BY	
CHECKED BY	

STATE OF HAWAII
DEPARTMENT OF TRANSPORTATION
HIGHWAYS DIVISION

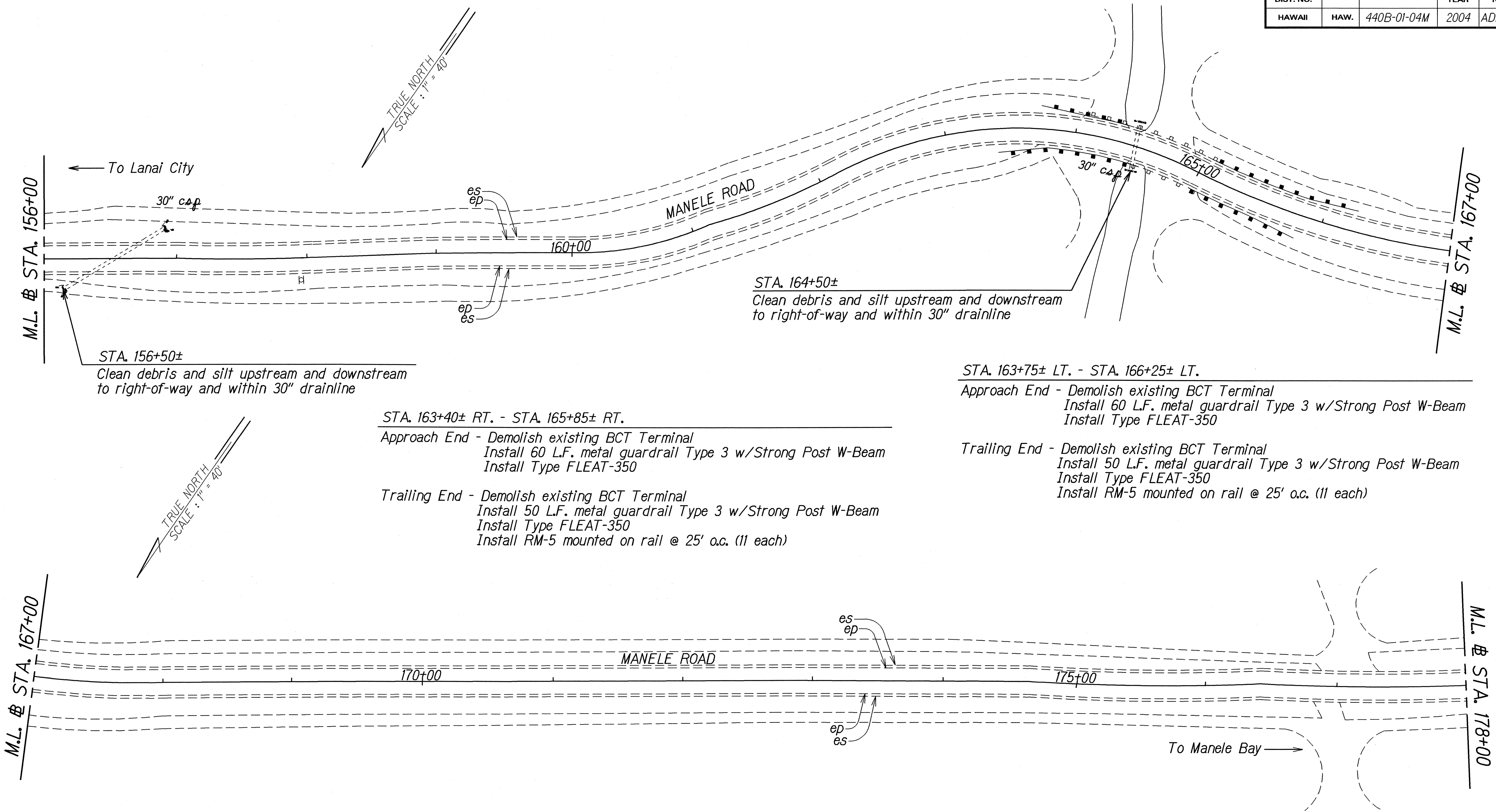
ROADWAY PLAN

MANELE ROAD RESURFACING
Lanai City Towards Manele Bay
Project No. 440B-01-04M

Scale: 1" = 40' Date: August, 2003

SHEET No. 7 OF 17 SHEETS

FED. ROAD DIST. NO.	STATE	PROJ. NO.	FISCAL YEAR	SHEET NO.	TOTAL SHEETS
HAWAII	HAW.	440B-01-04M	2004	ADD.15	58

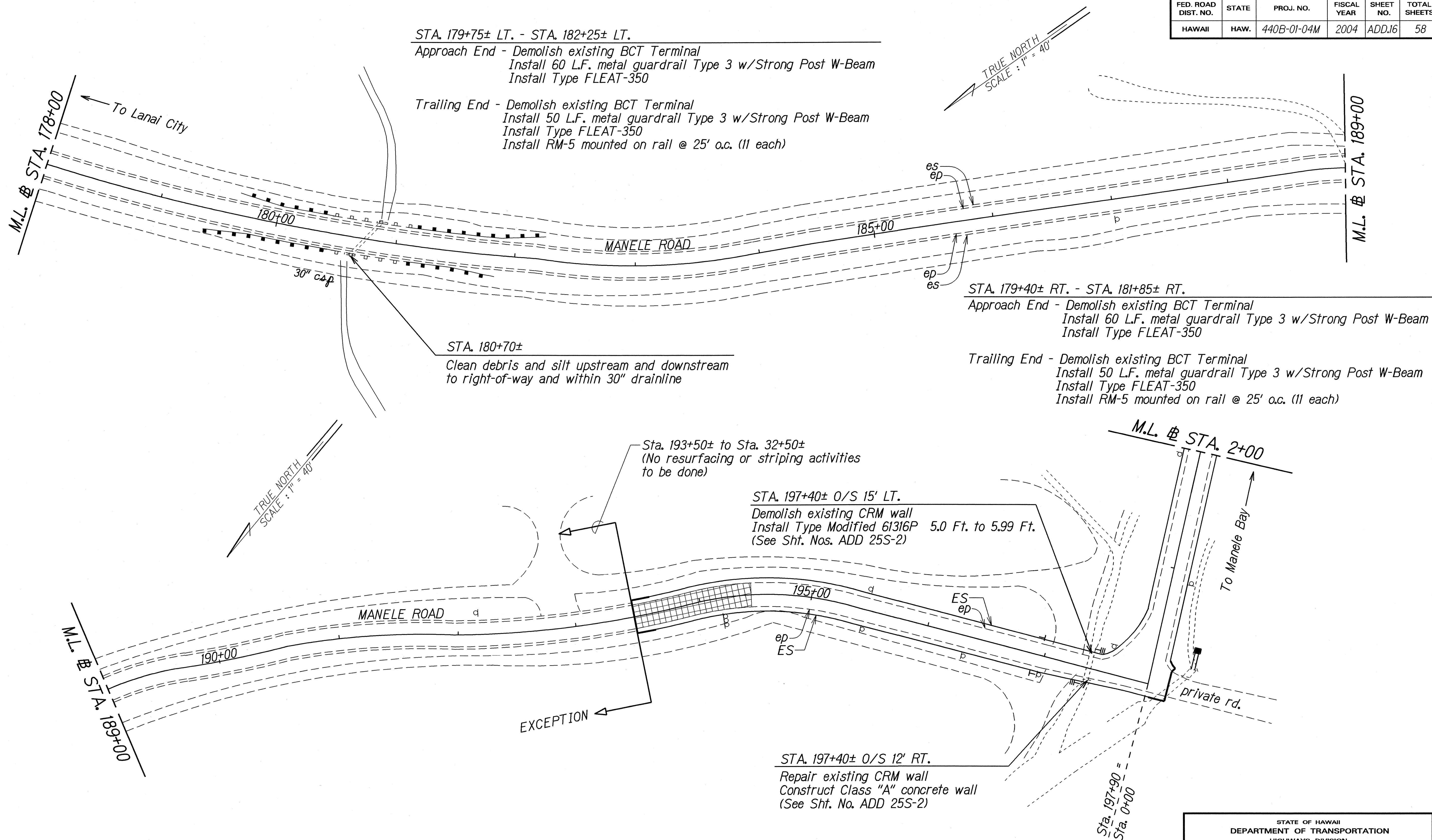


ORIGINAL PLAN	SURVEY PLOTTED BY	DATE
NOTE BOOK	DESIGNED BY	2/03
QUANTITIES BY	CHECKED BY	

1-5-04	Revised quantity for metal guardrail Type-3 Strong Post W-Beam
DATE	REVISION

STATE OF HAWAII DEPARTMENT OF TRANSPORTATION HIGHWAYS DIVISION
ROADWAY PLAN
MANELE ROAD RESURFACING
Lanai City Towards Manele Bay
Project No. 440B-01-04M
Scale: 1"= 40' Date: August, 2003
SHEET No. 8 OF 17 SHEETS

FED. ROAD DIST. NO.	STATE	PROJ. NO.	FISCAL YEAR	SHEET NO.	TOTAL SHEETS
HAWAII	HAW.	440B-01-04M	2004	ADD.16	58

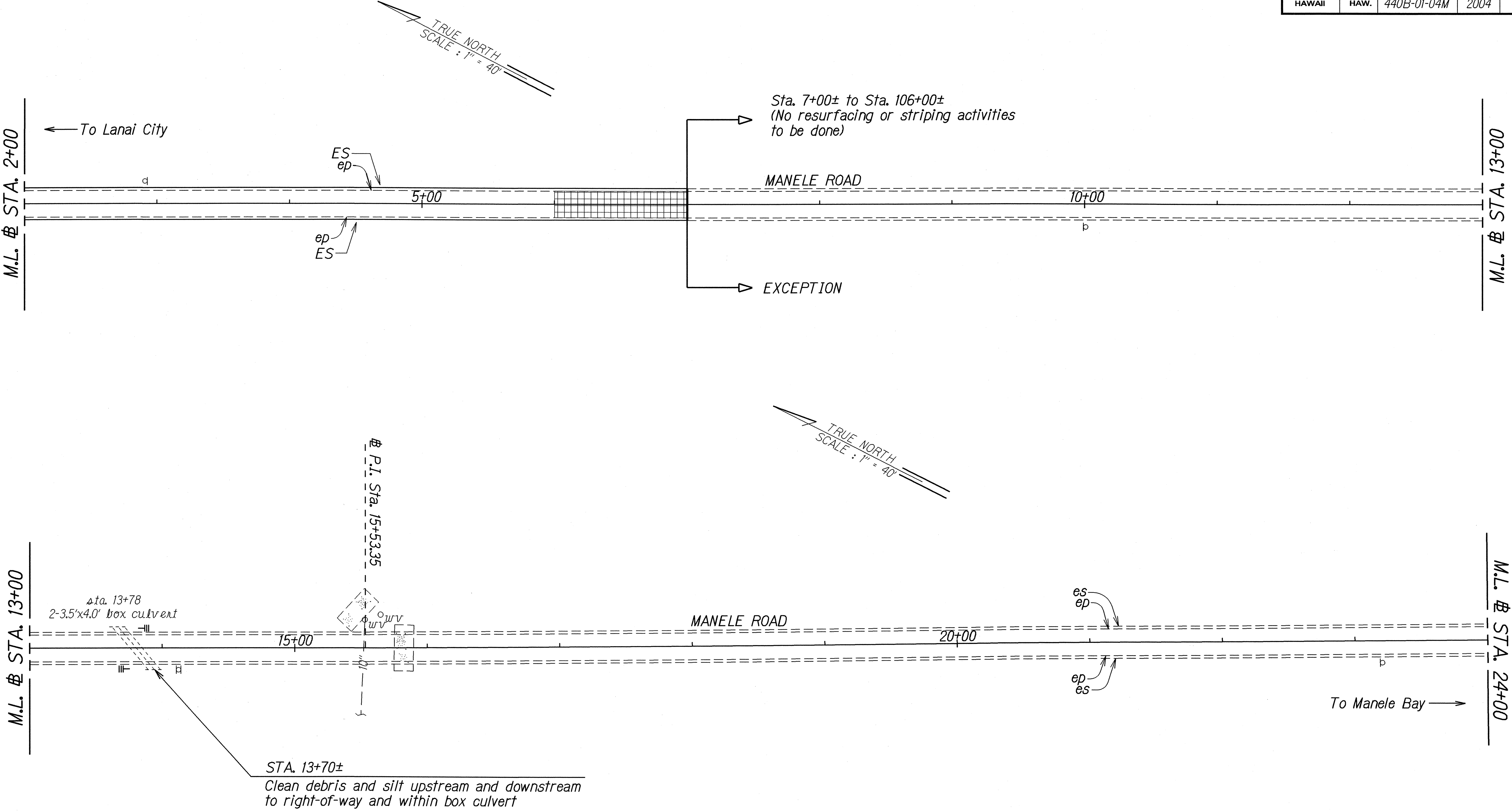


SURVEY PLOTTED BY	DATE
DESIGNED BY	8/03
TRACED BY	
NOTED BY	
QUANTITIES BY	
CHECKED BY	

STATE OF HAWAII DEPARTMENT OF TRANSPORTATION HIGHWAYS DIVISION
ROADWAY PLAN
MANELE ROAD RESURFACING
Lanai City Towards Manele Bay
Project No. 440B-01-04M
Scale: 1" = 40' Date: August, 2003
SHEET No. 9 OF 17 SHEETS

1-5-04	Revised quantity for metal guardrail Type-3 w/Strong Post W-Beam. Additional work at the inlet and outlet structures Sta. 197+40±
DATE	REVISION

FED. ROAD DIST. NO.	STATE	PROJ. NO.	FISCAL YEAR	SHEET NO.	TOTAL SHEETS
HAWAII	HAW.	440B-01-04M	2004	17	58



DATE	8/03
SURVEY PLOTTED BY	
DRAWN BY	af
DESIGNED BY	af
CHECKED BY	af
ORIGINAL PLAN	
NOTE BOOK	
FILED	
CHECKED BY	af

STATE OF HAWAII
DEPARTMENT OF TRANSPORTATION
HIGHWAYS DIVISION

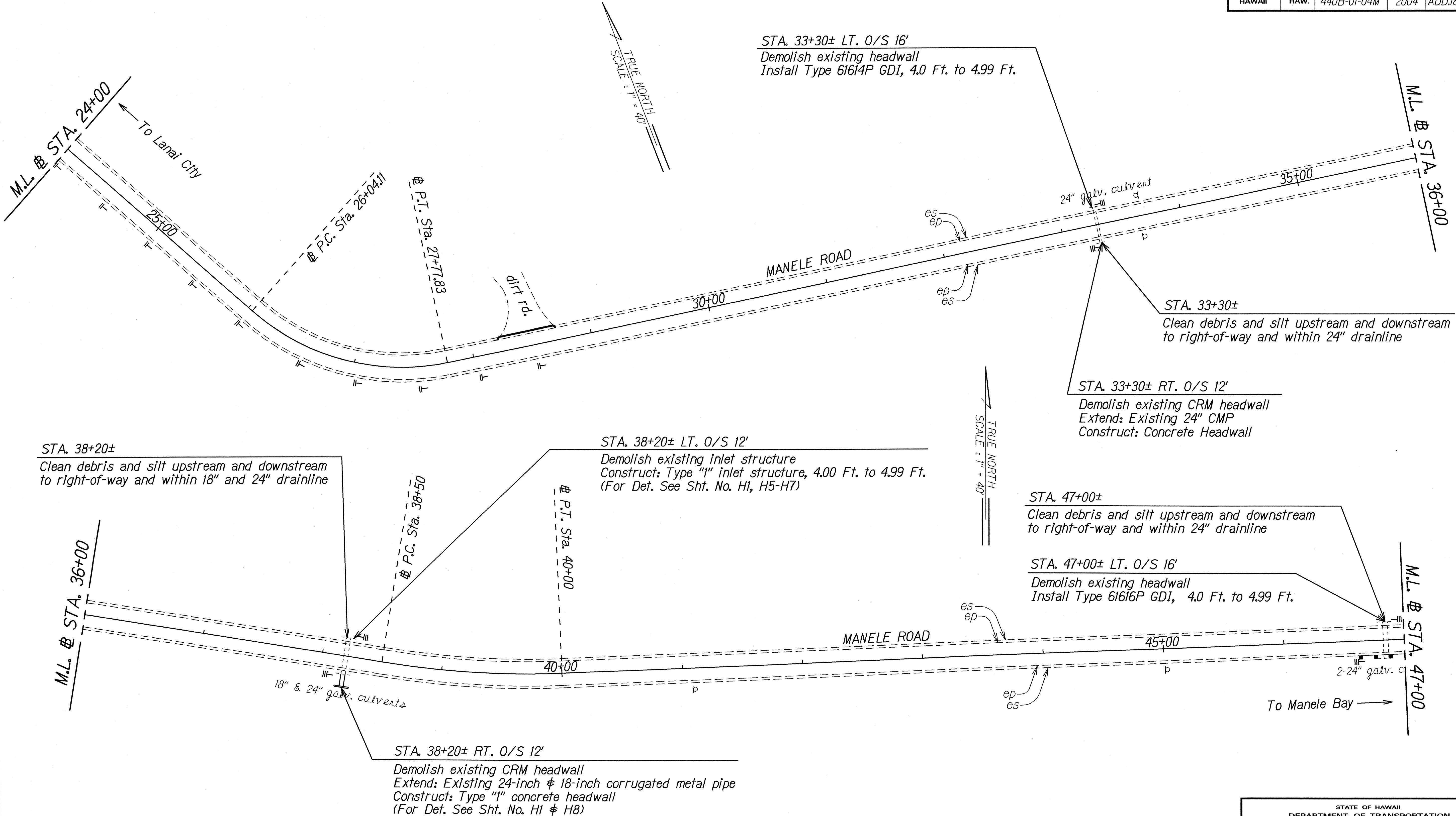
ROADWAY PLAN

MANELE ROAD RESURFACING
Lanai City Towards Manele Bay
Project No. 440B-01-04M

Scale: 1"= 40'
Date: August, 2003

SHEET No. 10 OF 17 SHEETS

FED. ROAD DIST. NO.	STATE	PROJ. NO.	FISCAL YEAR	SHEET NO.	TOTAL SHEETS
HAWAII	HAW.	440B-01-04M	2004	ADD.18	58



SURVEY PLOTTED BY	DATE
DESIGNED BY	8/03
NOTED BY	
QUANTITIES BY	
CHECKED BY	

1-5-04	Additional work at the inlet and outlet structures @ Sta. 33+30 and Sta. 47+00
DATE	REVISION

STATE OF HAWAII
DEPARTMENT OF TRANSPORTATION
HIGHWAYS DIVISION

ROADWAY PLAN
MANELE ROAD RESURFACING
Lanai City Towards Manele Bay
Project No. 440B-01-04M

Scale: 1"= 40'
Date: August, 2003

SHEET No. 11 OF 17 SHEETS

FED. ROAD DIST. NO.	STATE	PROJ. NO.	FISCAL YEAR	SHEET NO.	TOTAL SHEETS
HAWAII	HAW.	440B-01-04M	2004	ADD.19	58

STA. 51+75± LT. & RT. - STA. 53+90± LT. & RT.

Demolish Type "C" and Type "F" terminals
Install terminal section Type "A" approach & trailing ends (4 each)
Install RM-5 mounted on rail @ 25' o.c. (18 each)

STA. 53+25±

Clean debris and silt upstream and downstream
to right-of-way and within 36" drainline

STA. 60+50± LT. 0/S 16'

Demolish existing headwall
Install Type 61614P GDI, 4.0 Ft. to 4.99 Ft.

STA. 60+50±

Clean debris and silt upstream and downstream
to right-of-way and within 30" drainline

STA. 45+50± RT. - STA. 50+30± RT.

Demolish Type "C" and Type "F" terminals
Install terminal section Type "A" approach & trailing ends (2 each)
Install RM-5 mounted on rail @ 25' o.c. (20 each)

STA. 67+25± LT. - STA. 70+90± LT.

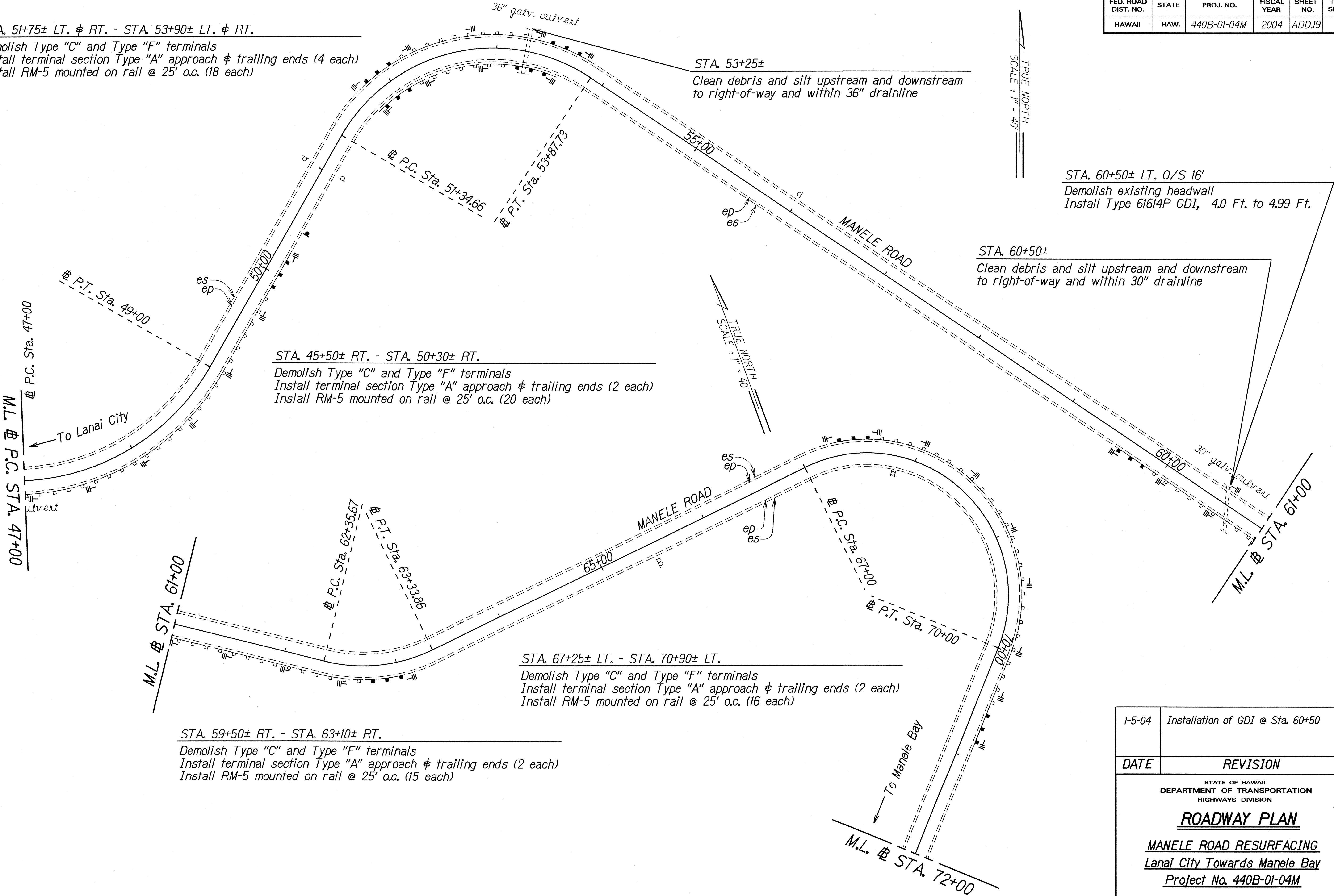
Demolish Type "C" and Type "F" terminals
Install terminal section Type "A" approach & trailing ends (2 each)
Install RM-5 mounted on rail @ 25' o.c. (16 each)

STA. 59+50± RT. - STA. 63+10± RT.

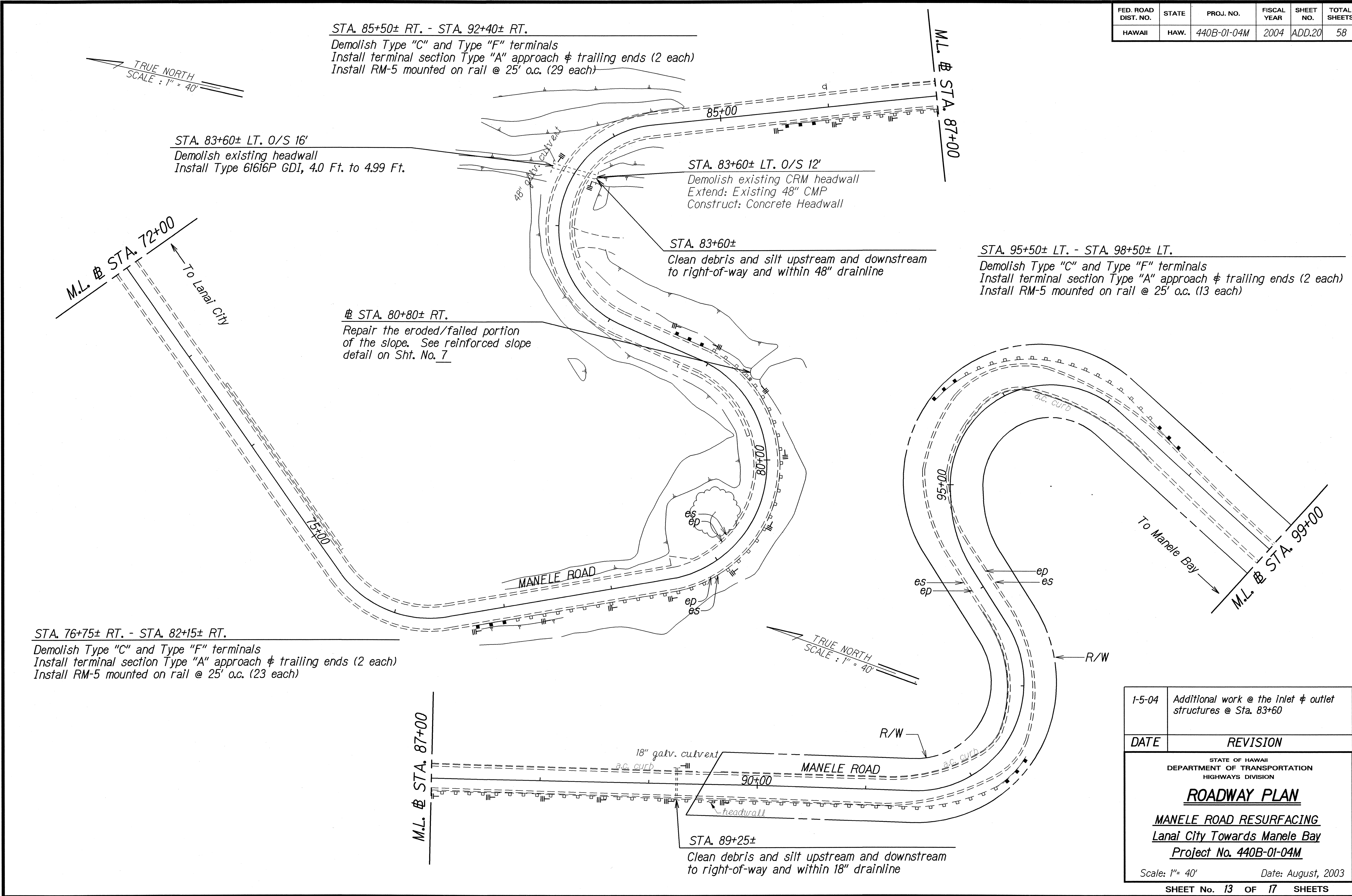
Demolish Type "C" and Type "F" terminals
Install terminal section Type "A" approach & trailing ends (2 each)
Install RM-5 mounted on rail @ 25' o.c. (15 each)

SURVEY PLOTTED BY	DATE
DESIGNED BY	2/03
TRACED BY	
NOTE BOOK	
DESIGNED BY	
QUANTITIES BY	
CHECKED BY	

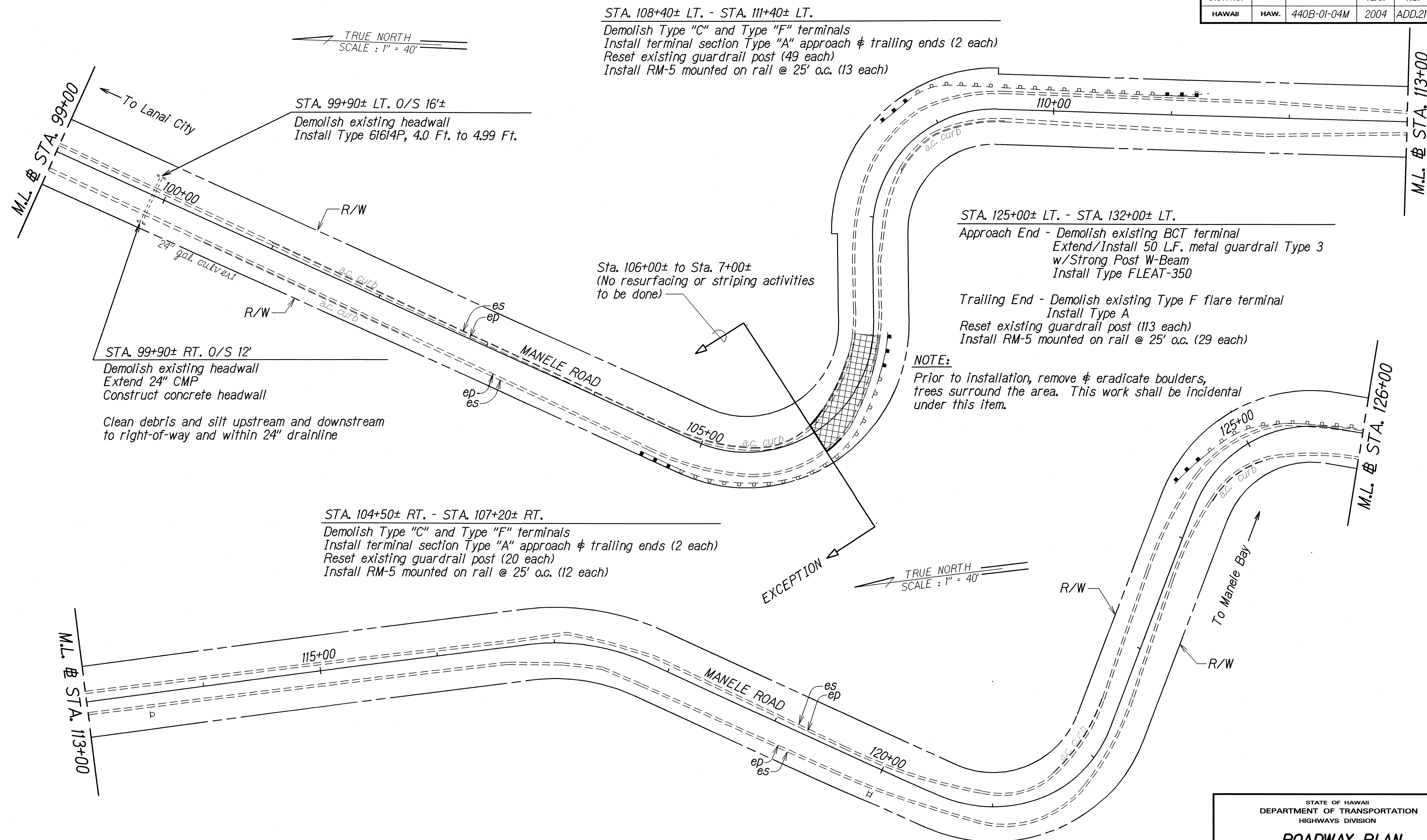
1-5-04	Installation of GDI @ Sta. 60+50
DATE	REVISION
STATE OF HAWAII DEPARTMENT OF TRANSPORTATION HIGHWAYS DIVISION ROADWAY PLAN MANELE ROAD RESURFACING Lanai City Towards Manele Bay Project No. 440B-01-04M Scale: 1"= 40' Date: August, 2003 SHEET No. 12 OF 17 SHEETS	



FED. ROAD DIST. NO.	STATE	PROJ. NO.	FISCAL YEAR	SHEET NO.	TOTAL SHEETS
HAWAII	HAW.	440B-01-04M	2004	ADD.20	58



FED. ROAD DIST. NO.	STATE	PROJ. NO.	FISCAL YEAR	SHEET NO.	TOTAL SHEETS
HAWAII	HAW.	440B-01-04M	2004	ADD.21	58

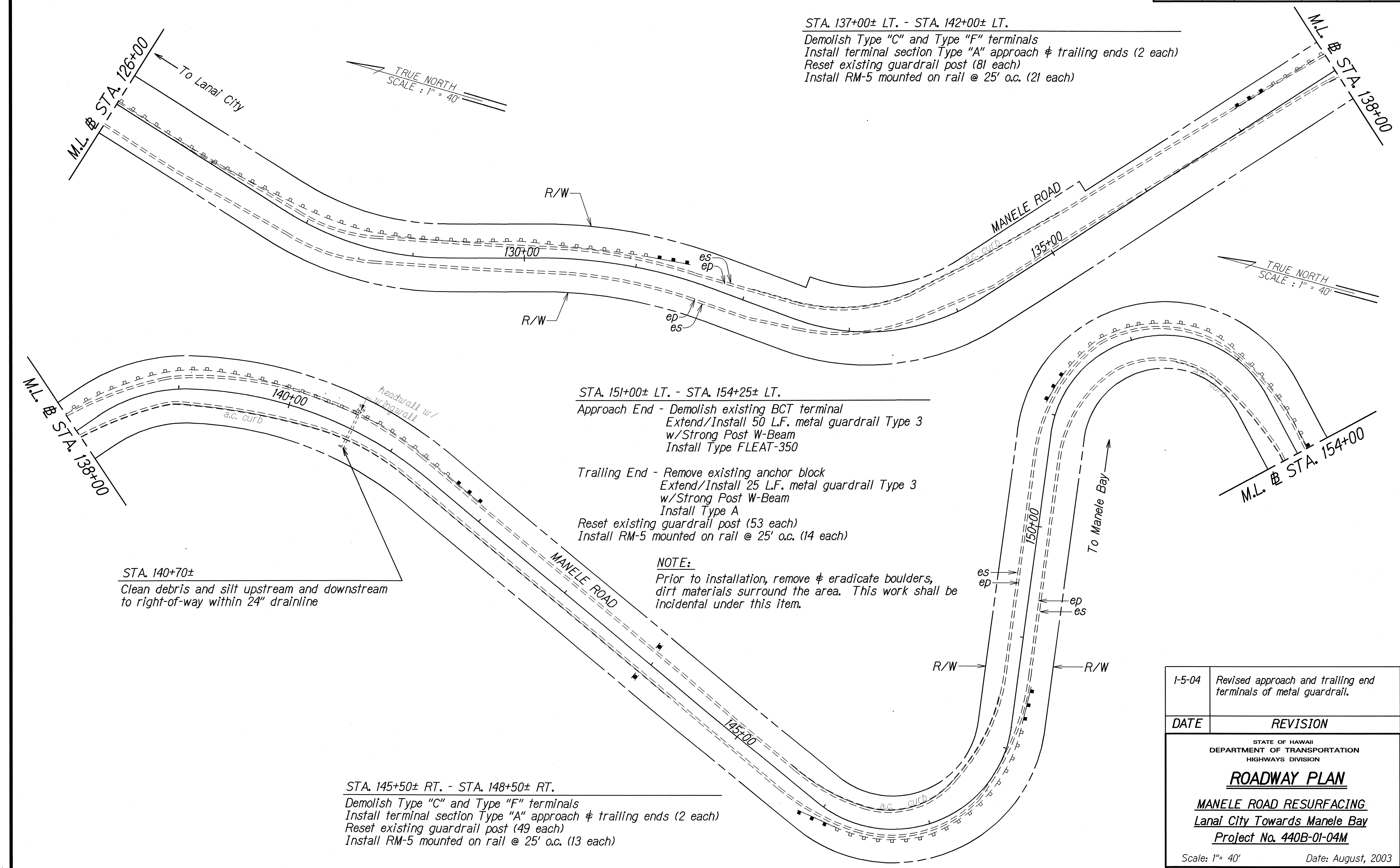


ORIGINAL PLAN	DATE 8/03
SURVEY PLOTTED BY	DESIGNED BY
NOTED BY	QUANTITIES BY
CHECKED BY	

1-5-04	Additional work at the inlet & outlet structures @ Sta. 99+90. Revised approach & trailing end terminals of metal guardrail.
DATE	REVISION

STATE OF HAWAII DEPARTMENT OF TRANSPORTATION HIGHWAYS DIVISION
ROADWAY PLAN
MANELE ROAD RESURFACING
Lanai City Towards Manele Bay
Project No. 440B-01-04M
Scale: 1" = 40' Date: August, 2003
SHEET No. 14 OF 17 SHEETS

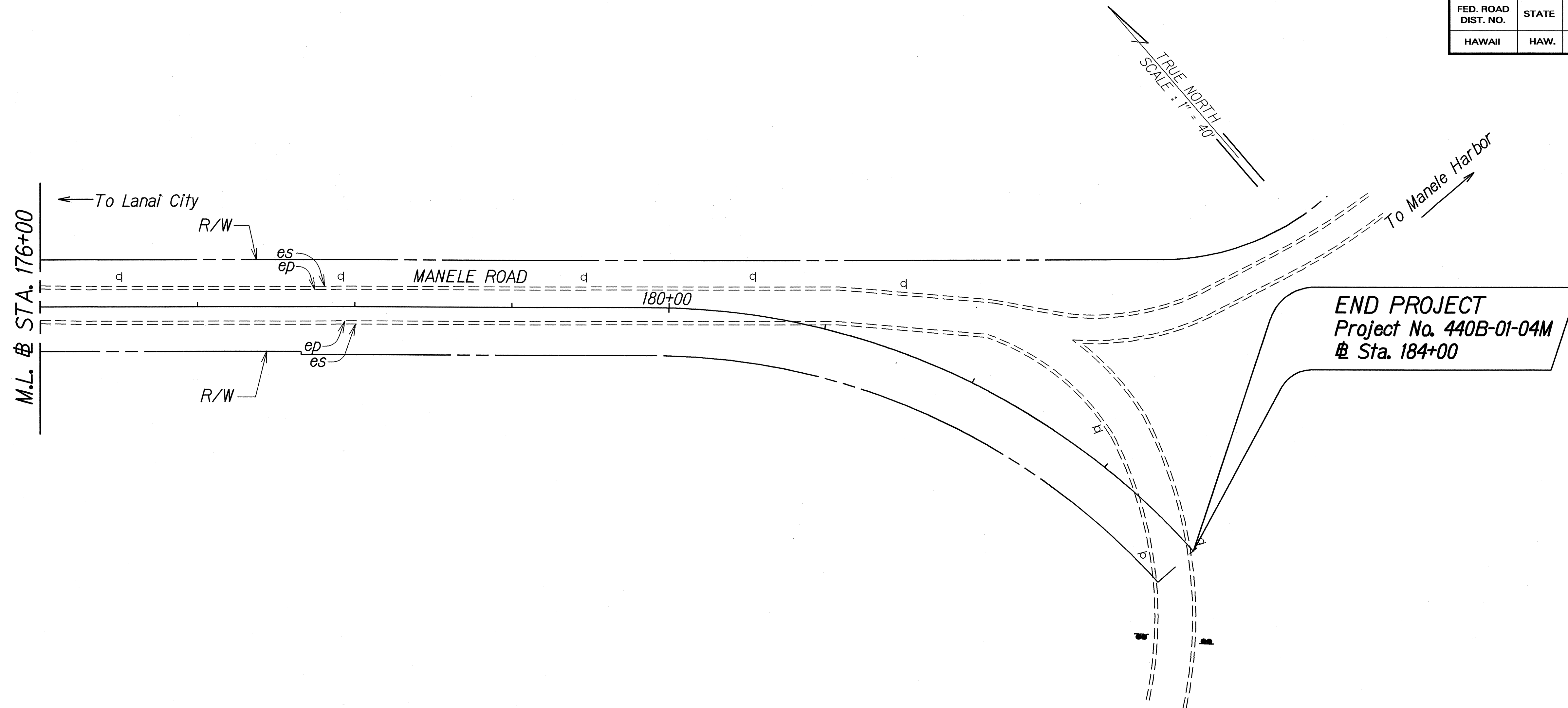
FED. ROAD DIST. NO.	STATE	PROJ. NO.	FISCAL YEAR	SHEET NO.	TOTAL SHEETS
HAWAII	HAW.	440B-01-04M	2004	ADD.22	58



SURVEY PLOTTED BY	DATE
DESIGNED BY	8/03
TRACED BY	
NOTE BOOK	
QUANTITIES BY	
CHECKED BY	

1-5-04	Revised approach and trailing end terminals of metal guardrail.
DATE	REVISION
STATE OF HAWAII DEPARTMENT OF TRANSPORTATION HIGHWAYS DIVISION ROADWAY PLAN MANELE ROAD RESURFACING Lanai City Towards Manele Bay Project No. 440B-01-04M Scale: 1"= 40' Date: August, 2003 SHEET No. 15 OF 17 SHEETS	

FED. ROAD DIST. NO.	STATE	PROJ. NO.	FISCAL YEAR	SHEET NO.	TOTAL SHEETS
HAWAII	HAW.	440B-01-04M	2004	24	58



ORIGINAL PLAN	SURVEY PLOTTED BY _____	DATE _____
NOTE BOOK	DRAWN BY <i>40</i>	<i>8/03</i>
<i>held by</i>	TRACED BY _____	_____
<i>4/27/01/1/2004</i>	DESIGNED BY <i>or</i>	_____
	QUANTITIES BY _____	_____
	CHECKED BY _____	_____

STATE OF HAWAII
DEPARTMENT OF TRANSPORTATION
HIGHWAYS DIVISION

ROADWAY PLAN

MANELE ROAD RESURFACING
Lanai City Towards Manele Bay
Project No. 440B-01-04M

Scale: 1"= 40' Date: August, 2003

SHEET No. 17 OF 17 SHEETS