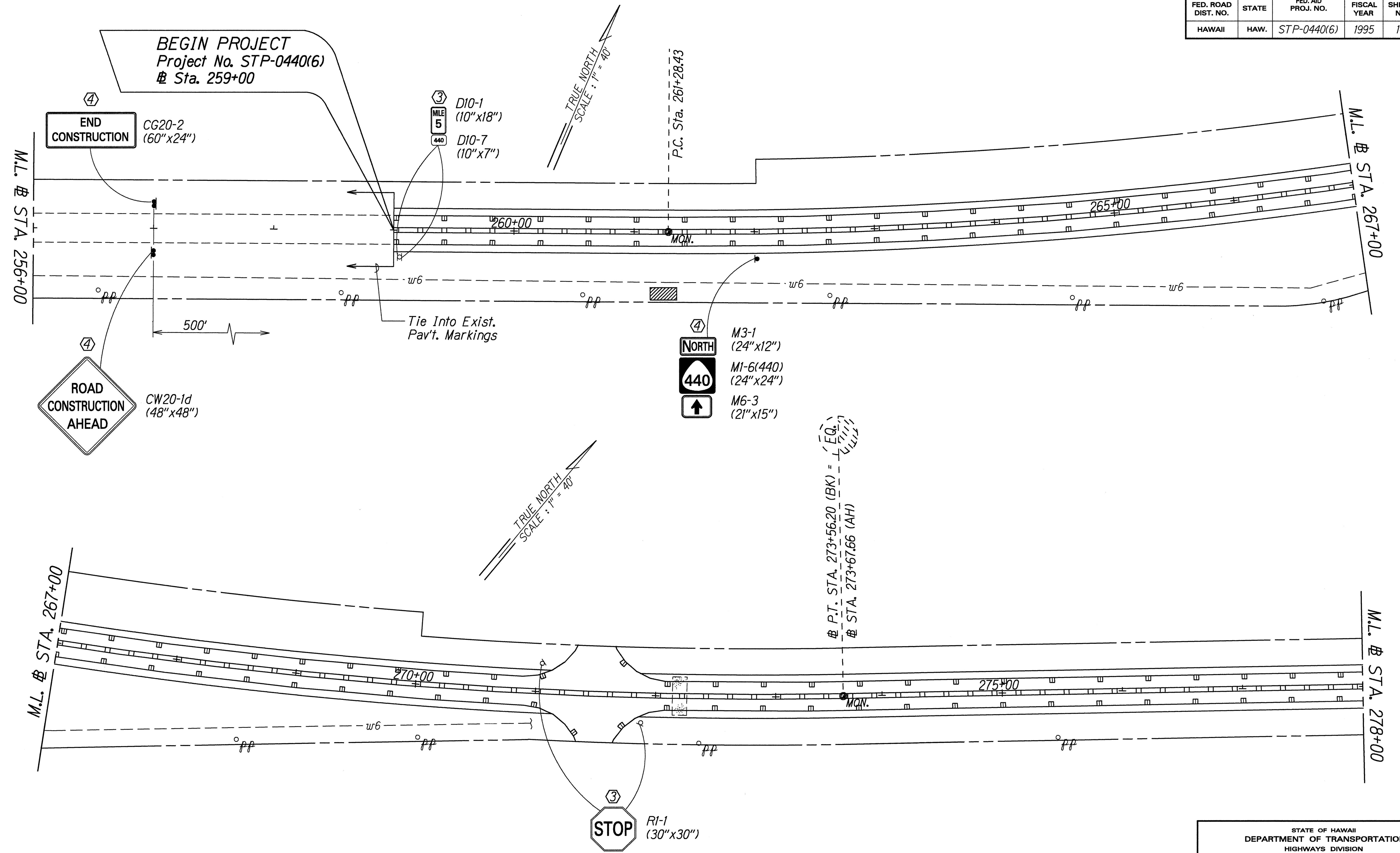


FED. ROAD DIST. NO.	STATE	FED. AID PROJ. NO.	FISCAL YEAR	SHEET NO.	TOTAL SHEETS
HAWAII	HAW.	STP-0440(6)	1995	14	17



ORIGINAL PLAN	SURVEY PLOTTED BY	DATE
NOTE BOOK	DRAWN BY	Aug. 1994
180ms 9/90	DESIGNED BY	
1/2" = 100'	QUANTITIES BY	
1/4" = 100'	CHECKED BY	

- KEY:**
- ① Exist. Sign(s) & Post(s) to Remain
  - ② Remove Exist. Sign(s) & Post(s)
  - ③ Remove Exist. & Install New Sign(s) & Post(s)
  - ④ Install New Sign(s) & Post(s)

STATE OF HAWAII  
DEPARTMENT OF TRANSPORTATION  
HIGHWAYS DIVISION

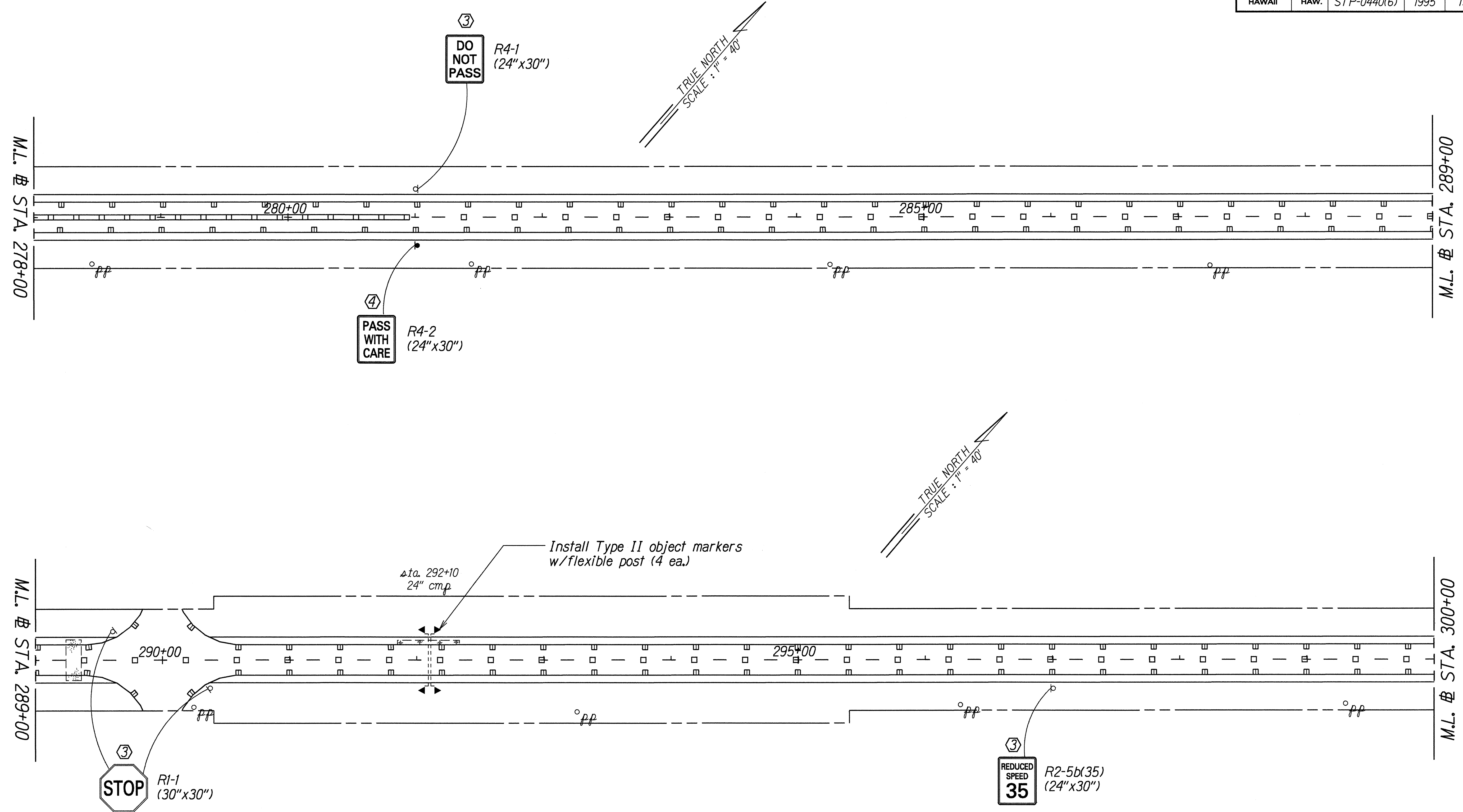
**SIGNING & PAVEMENT MARKING PLAN**

**KAUMALAPAU HIGHWAY RESURFACING**  
M.P. 5.0 to End of Lanai City Spur and  
**MANELE ROAD RESURFACING**  
Manele Bay Hotel to Manele Bay  
Project No. STP-0440(6)

Scale: 1" = 40' Date: August, 1994

SHEET No. 1 OF 3 SHEETS

FED. ROAD DIST. NO.	STATE	FED. AID PROJ. NO.	FISCAL YEAR	SHEET NO.	TOTAL SHEETS
HAWAII	HAW.	STP-0440(6)	1995	15	17



ORIGINAL PLAN	SURVEY PLOTTED BY	DATE
NOTE BOOK	DRAWN BY	Aug. 1994
187/m. of reg.	DESIGNED BY	
N. 1000/1000	CHECKED BY	

- KEY:**
- ① Exist. Sign(s) & Post(s) to Remain
  - ② Remove Exist. Sign(s) & Post(s)
  - ③ Remove Exist. & Install New Sign(s) & Post(s)
  - ④ Install New Sign(s) & Post(s)

STATE OF HAWAII  
DEPARTMENT OF TRANSPORTATION  
HIGHWAYS DIVISION

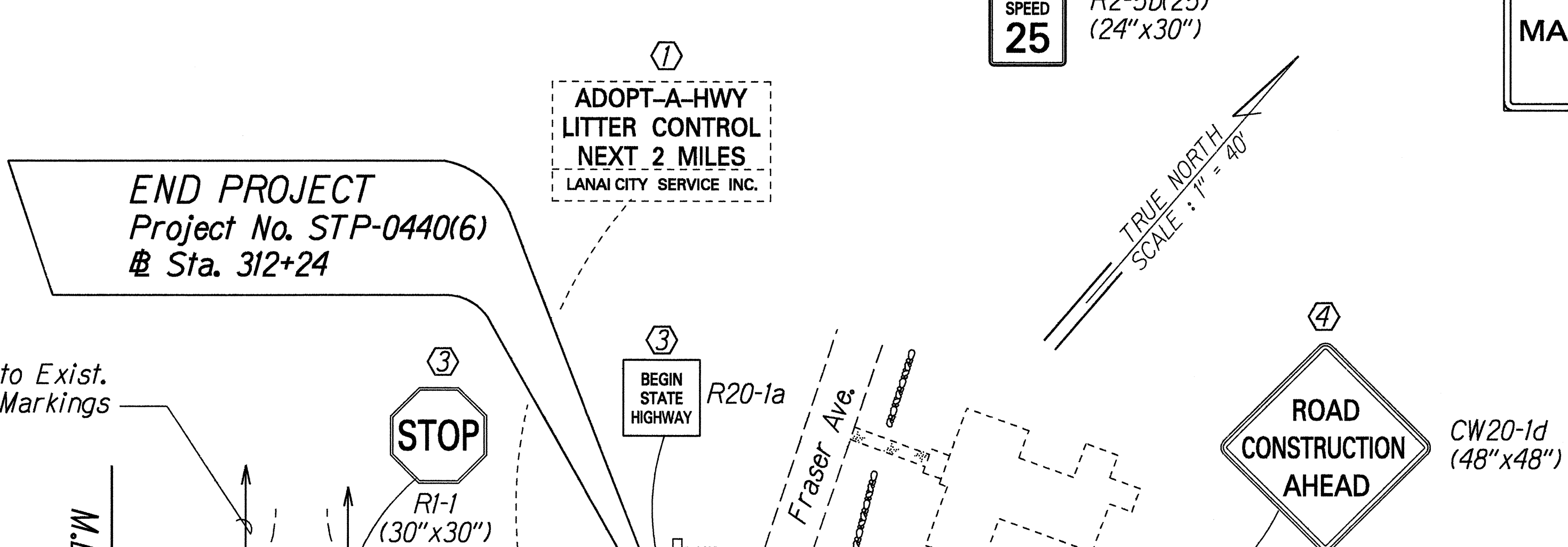
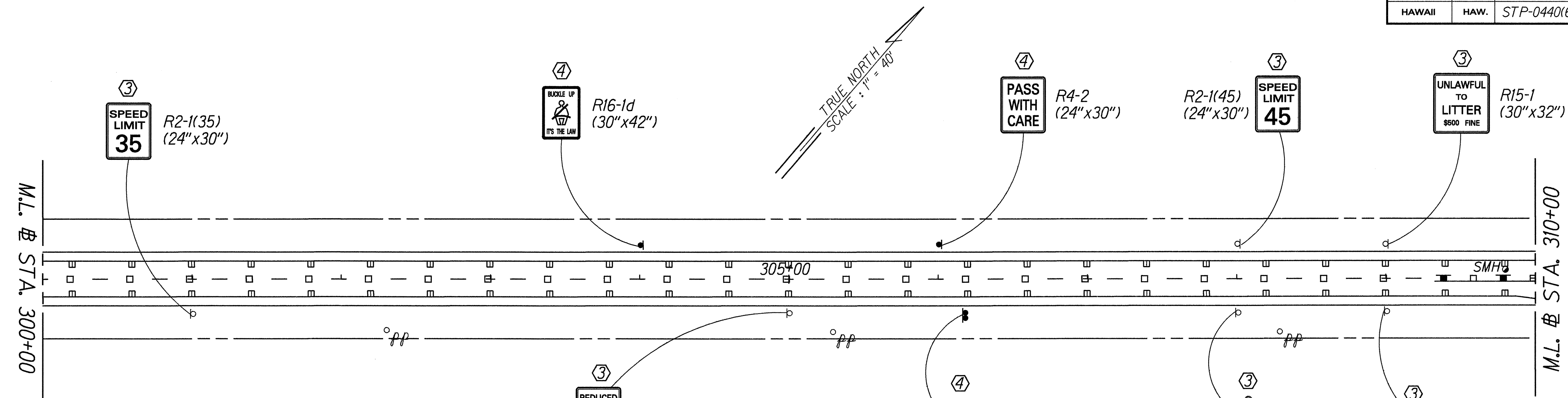
**SIGNING & PAVEMENT MARKING PLAN**

**KAUMALAPAU HIGHWAY RESURFACING**  
M.P. 5.0 to End of Lanai City Spur and  
**MANELE ROAD RESURFACING**  
Manele Bay Hotel to Manele Bay  
Project No. STP-0440(6)

Scale: 1" = 40'      Date: August, 1994

SHEET No. 2 OF 3 SHEETS

FED. ROAD DIST. NO.	STATE	FED. AID PROJ. NO.	FISCAL YEAR	SHEET NO.	TOTAL SHEETS
HAWAII	HAW.	STP-0440(6)	1995	16	17



Sta. 311+11'±  
Thermoplastic Extrusion  
Additional Crosswalk  
Striping (CCO No. 2)

**LEGEND FOR AS-BUILT POSTINGS**

	Squiggly line for as-built deletion
	Double line for as-built deletion
Roadway	Text for as-built posting

- KEY:**
- ① Exist. Sign(s) & Post(s) to Remain
  - ② Remove Exist. Sign(s) & Post(s)
  - ③ Remove Exist. & Install New Sign(s) & Post(s)
  - ④ Install New Sign(s) & Post(s)

STATE OF HAWAII  
DEPARTMENT OF TRANSPORTATION  
HIGHWAYS DIVISION

**SIGNING & PAVEMENT MARKING PLAN**

**KAUMALAPAU HIGHWAY RESURFACING**  
M.P. 5.0 to End of Lanai City Spur and  
**MANELE ROAD RESURFACING**  
Manele Bay Hotel to Manele Bay  
Project No. STP-0440(6)

Scale: 1" = 40' Date: August, 1994  
SHEET No. 3 OF 3 SHEETS

DATE: 10/2/1995
SURVEY PLOTTED BY: [blank]
DRAWN BY: J. GARDNER
DESIGNED BY: C. FROST
CHECKED BY: [blank]
NOTE BOOK: 10/2/95
QUANTITIES BY: [blank]
CHECKED BY: [blank]