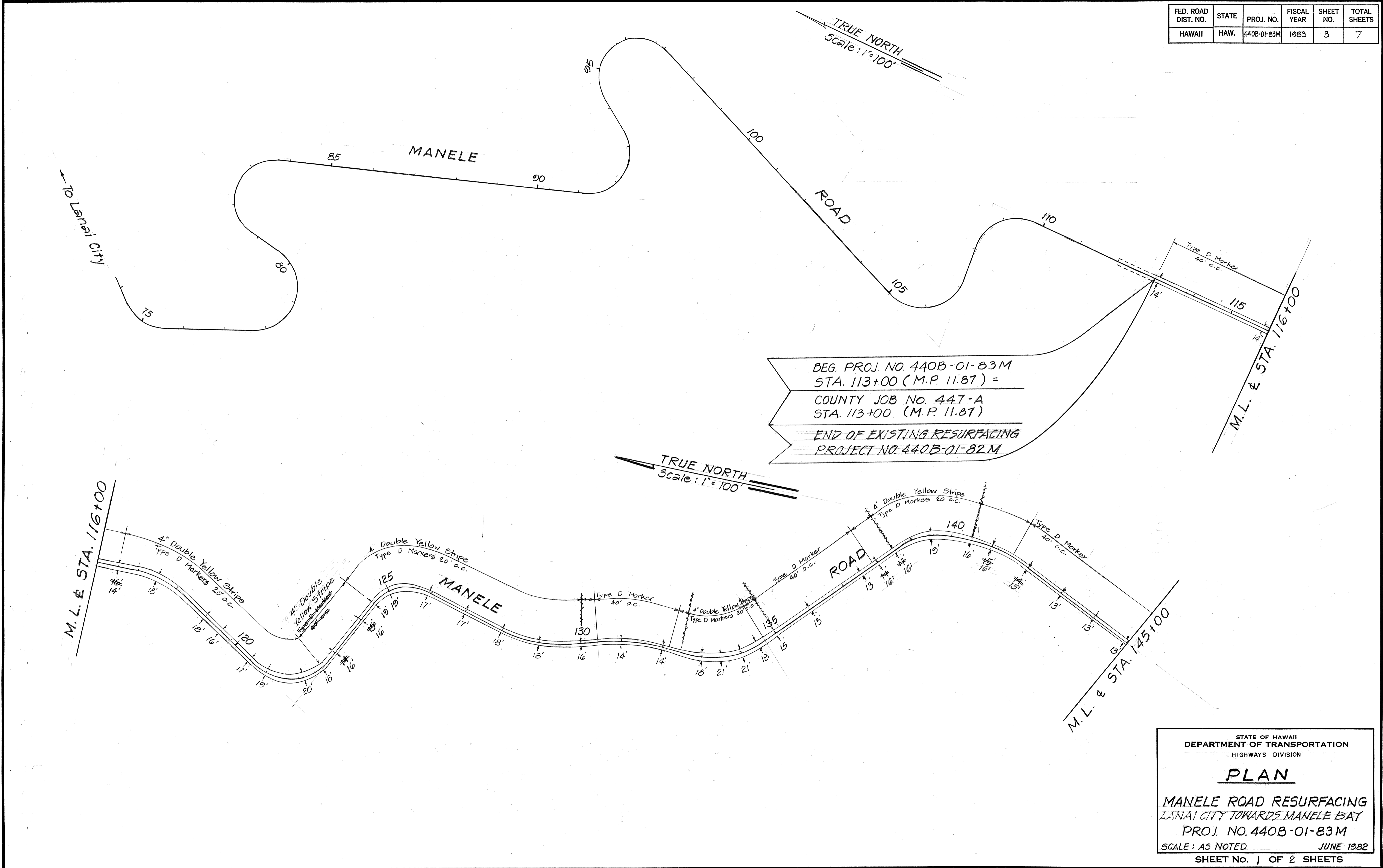


FED. ROAD DIST. NO.	STATE	PROJ. NO.	FISCAL YEAR	SHEET NO.	TOTAL SHEETS
HAWAII	HAW.	440B-01-83M	1983	3	7



ORIGINAL PLAN	DATE
DESIGNED BY	
TRACED BY	
NOTE BOOK	
QUANTITIES BY	
CHECKED BY	

STATE OF HAWAII  
DEPARTMENT OF TRANSPORTATION  
HIGHWAYS DIVISION

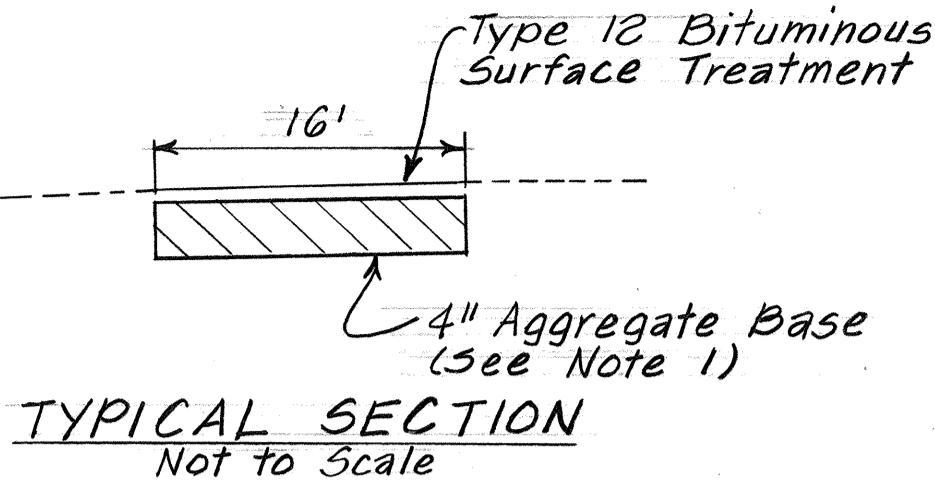
PLAN

MANELE ROAD RESURFACING  
LANAI CITY TOWARDS MANELE BAY  
PROJ. NO. 440B-01-83M

SCALE: AS NOTED  
SHEET No. 1 OF 2 SHEETS

JUNE 1982

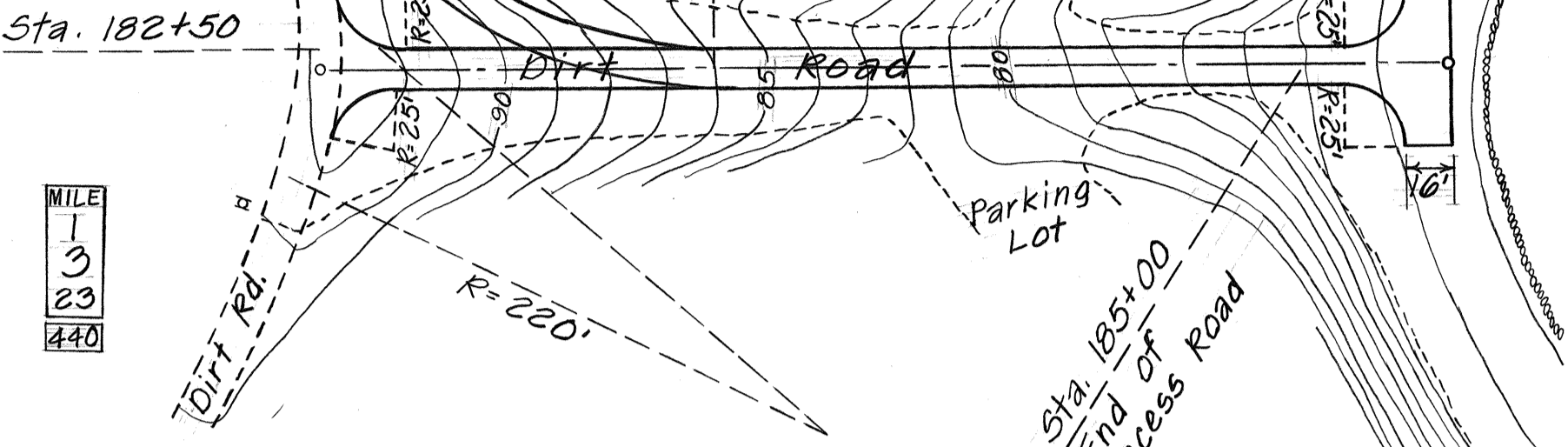
FED. ROAD DIST. NO.	STATE	PROJ. NO.	FISCAL YEAR	SHEET NO.	TOTAL SHEETS
HAWAII	HAW.	440B-01-83M	1983	4	7



"AS BUILT" Posted

CURVE DATA

$\Delta = 41^{\circ} 09' 36''$   
 $R = 165.00'$   
 $C = 116.00'$   
 $Lc = 118.53'$

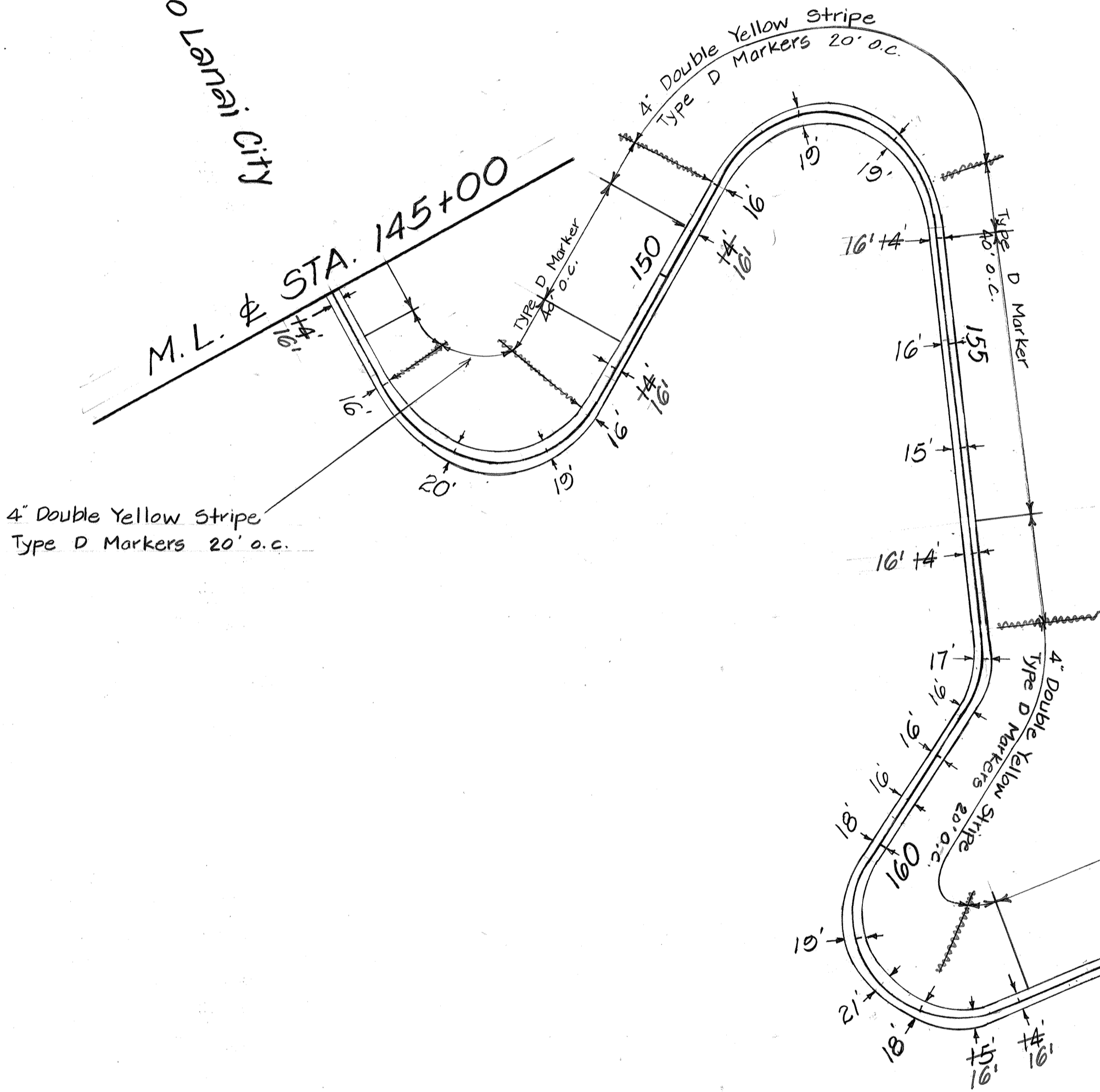


NOTES:

1. State Forces will place approximately 200 Tons of Aggregate Base.
2. Contractor will place approximately 800 S.Y. of Type 12 Bituminous Surface Treatment.

PLAN OF ACCESS ROAD

Sta. 182+50±  
 Not to Scale



END PROJECT 440B-01-83M  
 STA. 182+50 (M.P. 13.19)  
 STA. 185+00 (M.P. 13.23)  
 COUNTY JOB NO. 447-A  
 STA 185+00 (M.P. 13.23)  
 13.19

STATE OF HAWAII

DEPARTMENT OF TRANSPORTATION

HIGHWAYS DIVISION

PLAN

MANELE ROAD RESURFACING

LANAI CITY TOWARDS MANELE BAY

PROJ. NO. 440B-01-83M

SCALE: AS NOTED

JUNE 1982

SHEET NO. 2 OF 2 SHEETS