

FED. ROAD DIST. NO.	STATE	PROJ. NO.	FISCAL YEAR	SHEET NO.	TOTAL SHEETS
HAWAII	HAW.	HWY-M-03-21, PHASE 2	2022	29	46

DISPENSER (D) SCHEDULE

UNIT	LOCATION	CONNECTED TANK	WORKING FLUID	INTEGRAL PUMP PARAMETERS								REMARKS
				TYPE	DISPENSER HOSE (FT)	GPM	FT HEAD	MOTOR				
								HP	V	PH	HZ	
D-1	FLEET REFUELING STATION	ST-1	DESIEL	ROTARY VANE	12	22	13.0	1	115	1	60.0	1, 2, 3, 4, 5, 6
D-2	FLEET REFUELING STATION	ST-2	GASOLINE	ROTARY VANE	12	22	13.0	1	115	1	60.0	1, 2, 3, 4, 5, 6

NOTES:

1. PROVIDE WITH FUEL FILTER INTERNAL TO DISPENSER
2. FURNISH WITH STAINLESS STEEL FILL NOZZLE
3. PROVIDE HOUSING WITH 316 STAINLESS STEEL SHEATHING, FURNISH WITH MANUFACTURERS HIGHEST CORROSION RESISTANT COATING FOR COASTAL ENVIRONMENT
4. PROVIDE WITH INTEGRAL PRESSURE REGULATING VALVE
5. PROVIDE WITH INTERFACE TO RADIO FREQUENCY IDENTIFICATION TAG VERIFICATION SYSTEM AT NEW FUEL MANAGEMENT CONTROLLER
6. PROVIDE DISPENSER WITH FUEL SUPPLY INLET FROM TANK, CONNECTION ABOVE GRADE AT REAR OR BOTTOM OF DISPENSER. IF BOTTOM CONNECTION, PROVIDE WITH CURB KIT.

FUEL STORAGE TANK (ST) SCHEDULE	
ST-1	1000
ST-2	1000
ST-3	1000
ST-4	1000
ST-5	1000
ST-6	1000
ST-7	1000
ST-8	1000
ST-9	1000
ST-10	1000
ST-11	1000
ST-12	1000
ST-13	1000
ST-14	1000
ST-15	1000
ST-16	1000
ST-17	1000
ST-18	1000
ST-19	1000
ST-20	1000
ST-21	1000
ST-22	1000
ST-23	1000
ST-24	1000
ST-25	1000
ST-26	1000
ST-27	1000
ST-28	1000
ST-29	1000
ST-30	1000
ST-31	1000
ST-32	1000
ST-33	1000
ST-34	1000
ST-35	1000
ST-36	1000
ST-37	1000
ST-38	1000
ST-39	1000
ST-40	1000
ST-41	1000
ST-42	1000
ST-43	1000
ST-44	1000
ST-45	1000
ST-46	1000
ST-47	1000
ST-48	1000
ST-49	1000
ST-50	1000
ST-51	1000
ST-52	1000
ST-53	1000
ST-54	1000
ST-55	1000
ST-56	1000
ST-57	1000
ST-58	1000
ST-59	1000
ST-60	1000
ST-61	1000
ST-62	1000
ST-63	1000
ST-64	1000
ST-65	1000
ST-66	1000
ST-67	1000
ST-68	1000
ST-69	1000
ST-70	1000
ST-71	1000
ST-72	1000
ST-73	1000
ST-74	1000
ST-75	1000
ST-76	1000
ST-77	1000
ST-78	1000
ST-79	1000
ST-80	1000
ST-81	1000
ST-82	1000
ST-83	1000
ST-84	1000
ST-85	1000
ST-86	1000
ST-87	1000
ST-88	1000
ST-89	1000
ST-90	1000
ST-91	1000
ST-92	1000
ST-93	1000
ST-94	1000
ST-95	1000
ST-96	1000
ST-97	1000
ST-98	1000
ST-99	1000
ST-100	1000

UNIT NO.	SERVICE AREA	TYPE	WORKING FLUID	TANK MATERIAL	WALL TYPE	FITTINGS MATERIAL	VOLUME (GAL)	TANK DIMMENSIONS (IN)	TANK WEIGHT (LBS)	REMARKS
ST-1	FLEET REFUELING STATION	ABOVE GROUND HORIZONTAL CYLINDRICAL	DIESEL	316 STAINLESS STEEL	DOUBLE WALL	316 STAINLESS STEEL	5,000	167" (L) x 102" (DIA)	52,425	1, 2, 3, 4, 5, 6
ST-2	FLEET REFUELING STATION	ABOVE GROUND HORIZONTAL CYLINDRICAL	GASOLINE	316 STAINLESS STEEL	DOUBLE WALL	316 STAINLESS STEEL	2,000	151" (L) x 70" (DIA)	23,300	1, 2, 3, 4, 5, 6

NOTES:

1. TANK SHALL BE UL-2085 COMPLIANT
2. DOUBLE WALLED CONSTRUCTION WITH FACTORY FURNISHED ELECTRONIC LEAK DETECTION MONITORING PIPE FOR INTERSTITIAL SPACE.
3. FACOTRY FURHISH OR FIELD FABRICATE ACCESS LADDERS, STAIRS AND PLATFORM FOR TANK SERVICE AND ACCESS.
4. FACTORY FURNISH LIFTING LUGS.
5. FACTORY FURNISH WITH ELECTRONIC TANK LEVEL SENSOR WIRED TO ELECTRONIC CONTROL PANEL WITH AUDIO AND AND VISUAL ALARM. CONTROL PANEL SHALL BE FURNISHED FROM SAME SUPPLIER AS TANKS
6. FURNISH WITH VENT, PRIMARY AND SECONDARY EMERGENCY TANK VENTS, FURNISH WITH 316 STAINLESS STEEL VENT SCREENS

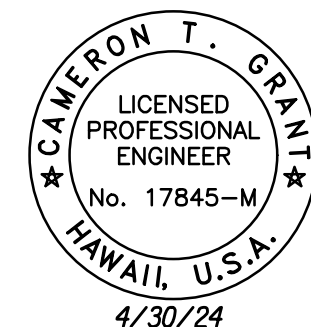
DIESEL EXHAUST FLUID TANK (DEF) SCHEDULE

UNIT NO.	SERVICE AREA	TYPE	WORKING FLUID	TANK MATERIAL	WALL TYPE	FITTINGS MATERIAL	VOLUME (GAL)	REMARKS
DEF-1	FLEET REFUELING STATION	VERTICAL CYLINDRICAL	DIESEL EXHAUST FLUID (32.5% UREA, 67.5% DEIONIZED WATER)	POLYETHYLENE	SINGLE WALL	316 STAINLESS STEEL	55	1,2,3

NOTES:
1. FURNISH WITH 6 GPM AIR HAND PUMP
2. FURNISH WITH 3/4" DIAMETER 12' DISCHARGE HOSE AND STAINLESS STEEL MANUAL NOZZLE
3. STAINLESS STEEL REUSABLE STAINLESS VALVE SPRING ACTUATED COUPLER

[illegible]

22055_M600_MECHANICAL SCHEDULES.DWG 7/6/2022 1:55:30 PM



EXP. DATE _____
Cameron Cook
 This work was prepared by
 me or under my supervision.

STATE OF HAWAII
DEPARTMENT OF TRANSPORTATION
HIGHWAYS DIVISION

MECHANICAL SCHEDULES

MAUI DISTRICT BASEYARD OFFICE EXPANSION &

RENOVATION, PART 2

Project No. HWY-M-03-21, Phase 2
Scale: NONE Date: JULY 2022

SHEET No. *M600* OF *15* SHEETS