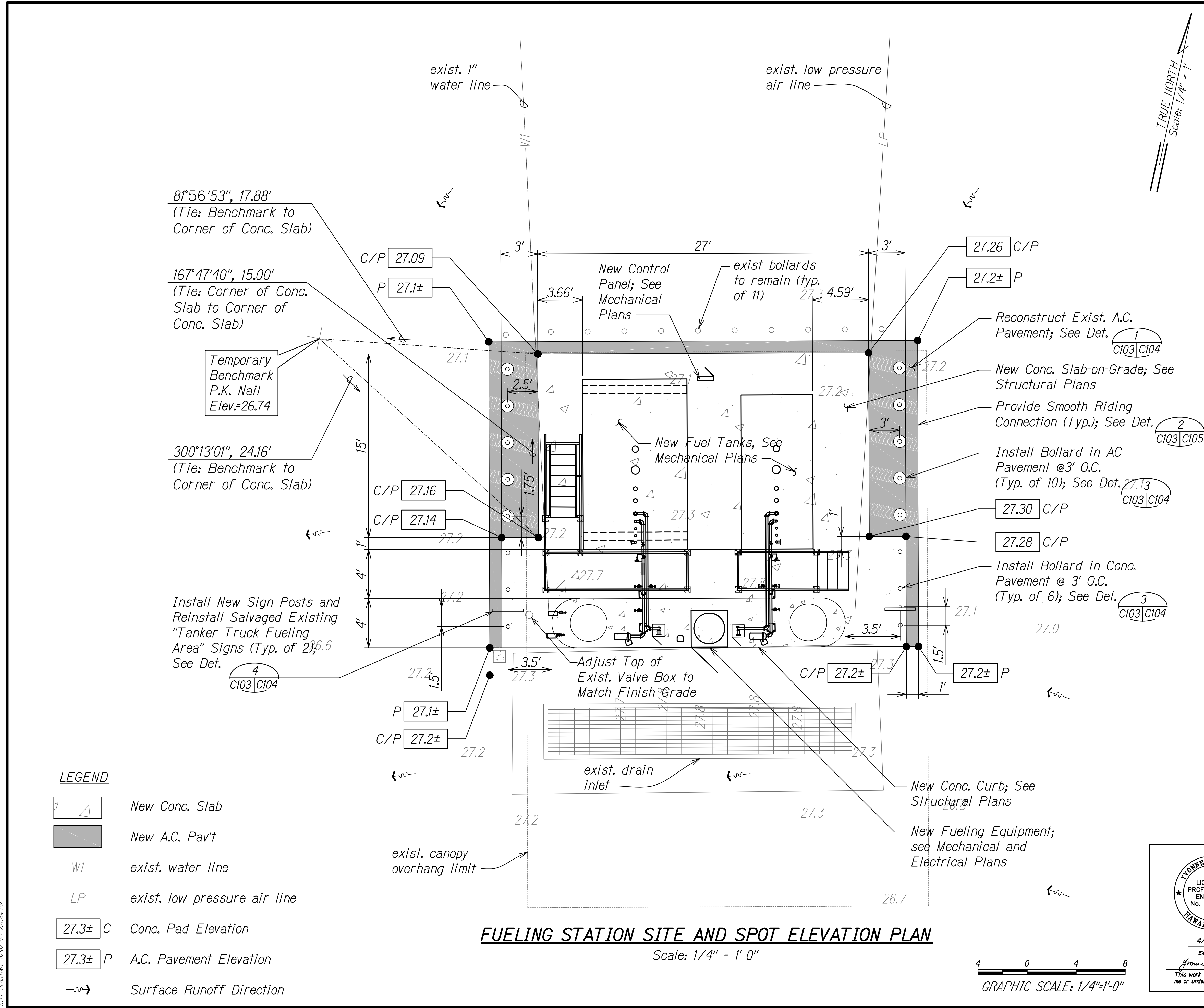


FED. ROAD DIST. NO.	STATE	PROJ. NO.	FISCAL YEAR	SHEET NO.	TOTAL SHEETS
HAWAII	HAW.	HWY-M-03-21, PHASE 2	2022	10	46

- NOTES:
- Contractor shall protect all existing utilities, whether or not shown on plans, at all times unless indicated to be removed or relocated.
 - Restore damaged A.C. pavement to meet or exceed existing pavement thickness.
 - For additional requirements, see also Structural, Mechanical, and Electrical plans.



LEGEND

- New Conc. Slab
- New A.C. Pav't
- WI — exist. water line
- LP — exist. low pressure air line
- 27.3± C Conc. Pad Elevation
- 27.3± P A.C. Pavement Elevation
- Surface Runoff Direction

STATE OF HAWAII
DEPARTMENT OF TRANSPORTATION
HIGHWAYS DIVISION

**FUELING STATION SITE AND
SPOT ELEVATION PLAN**

MAUI DISTRICT BASEYARD OFFICE EXPANSION \$
RENOVATION, PART 2
Project No. HWY-M-03-21, Phase 2
Scale: 1/4" = 1'-0" Date: July 2022

SHEET No. C103 OF 8 SHEETS

EXP. DATE
4/30/24

This work was prepared by
me or under my supervision.

SURVEY PLOTTED BY	DATE
DESIGNED BY	
CHECKED BY	
NOTE BOOK	
QUANTITIES BY	
CHECKED BY	
ORIGINAL PLAN	

SITE PLANING 8/18/2022 2:00:54 PM