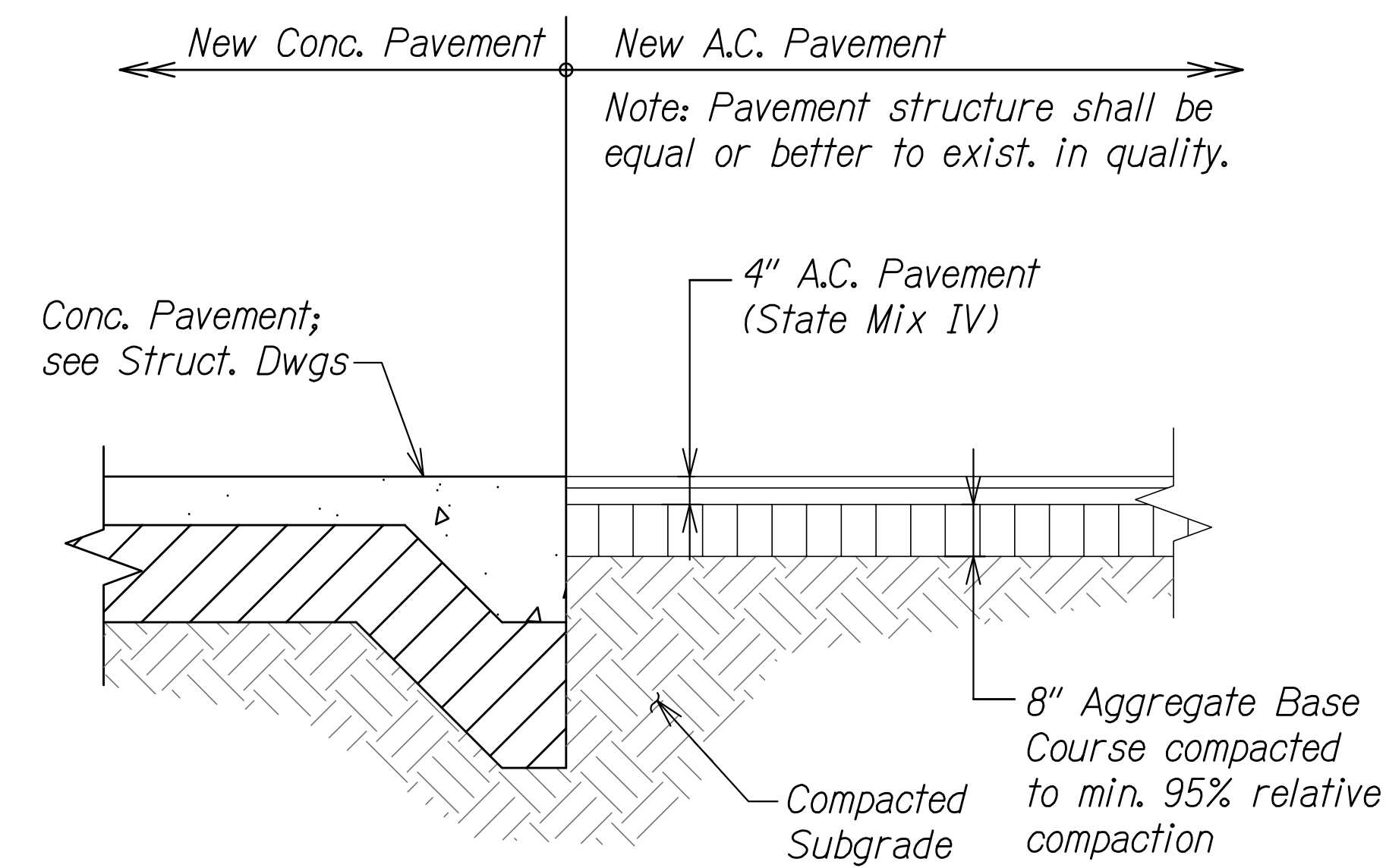
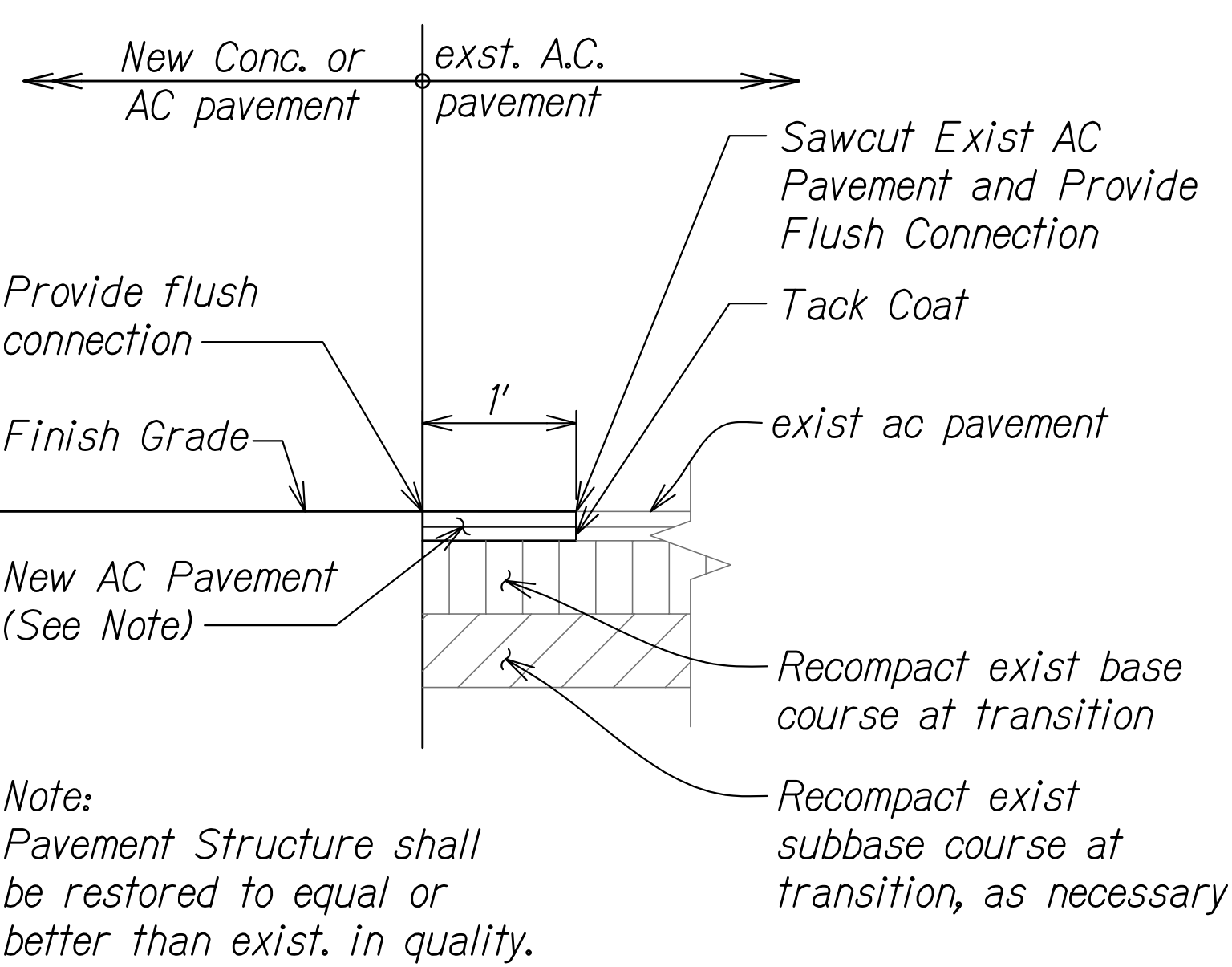


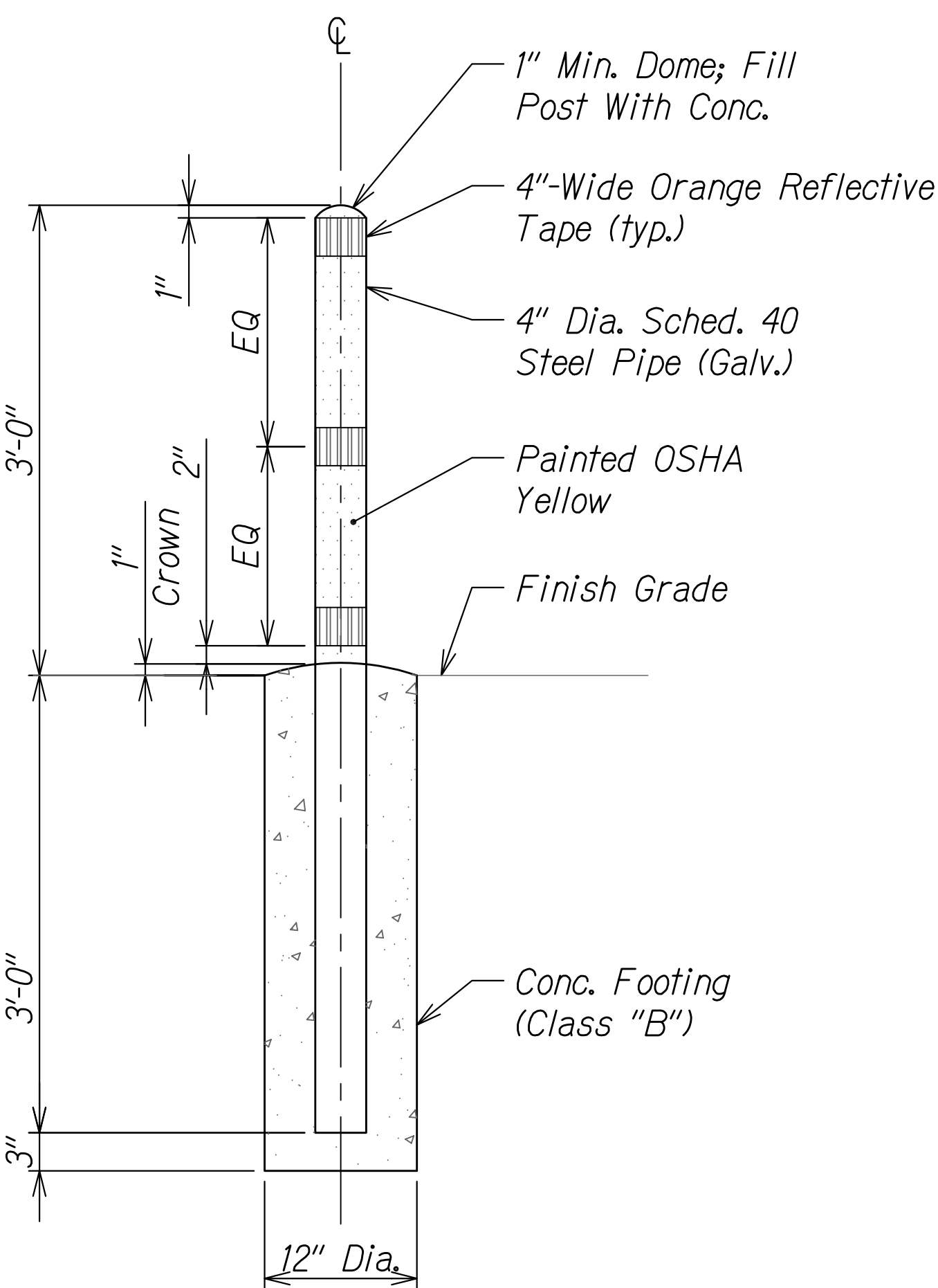
FED. ROAD DIST. NO.	STATE	PROJ. NO.	FISCAL YEAR	SHEET NO.	TOTAL SHEETS
HAWAII	HAW.	HWY-M-03-21, PHASE 2	2022	11	46



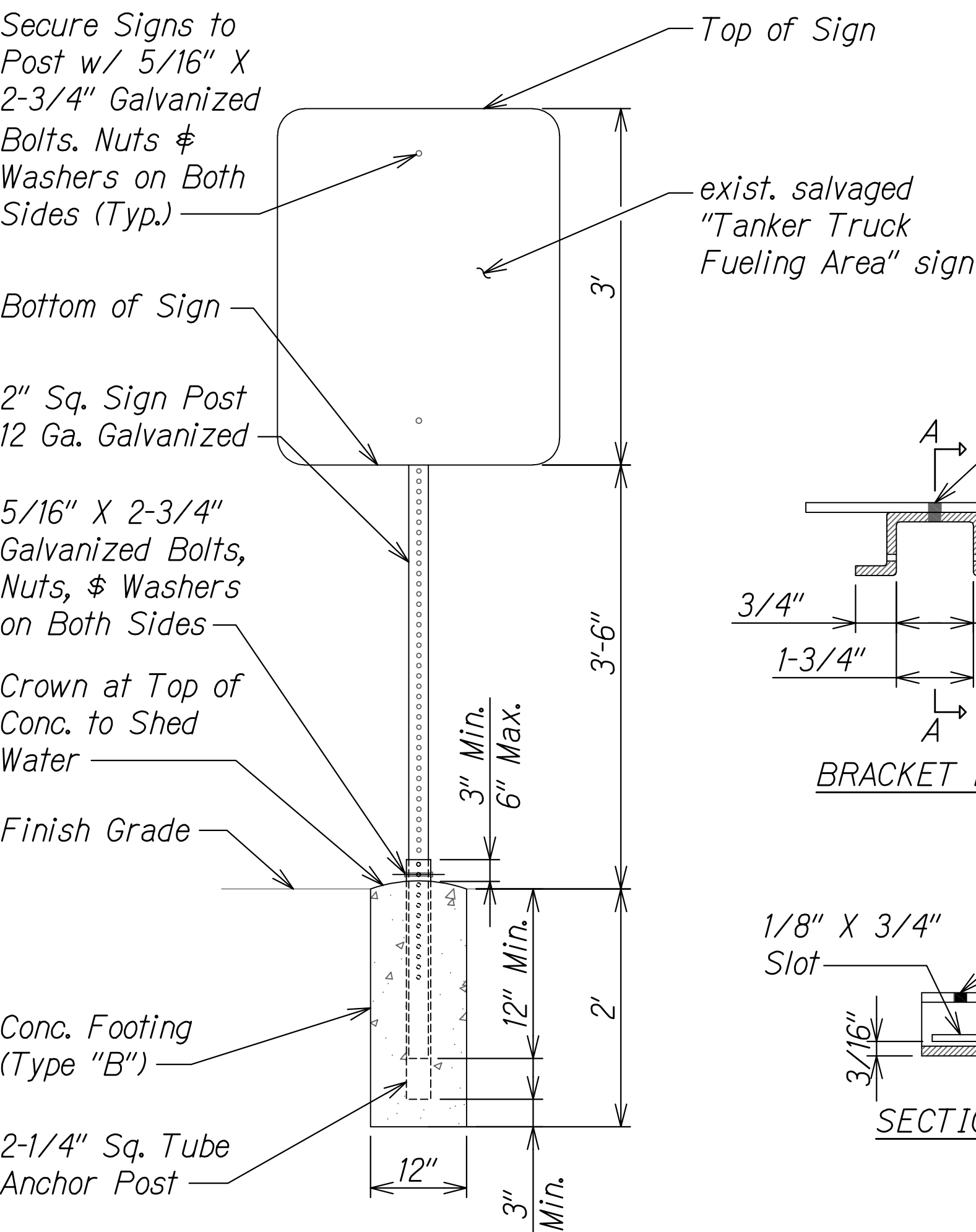
CONCRETE/A.C. PAVEMENT TRANSITION DETAIL 1  
C103C104  
Scale: Not to Scale



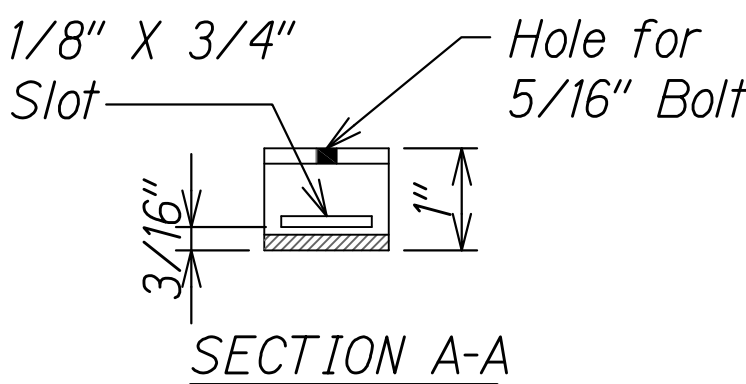
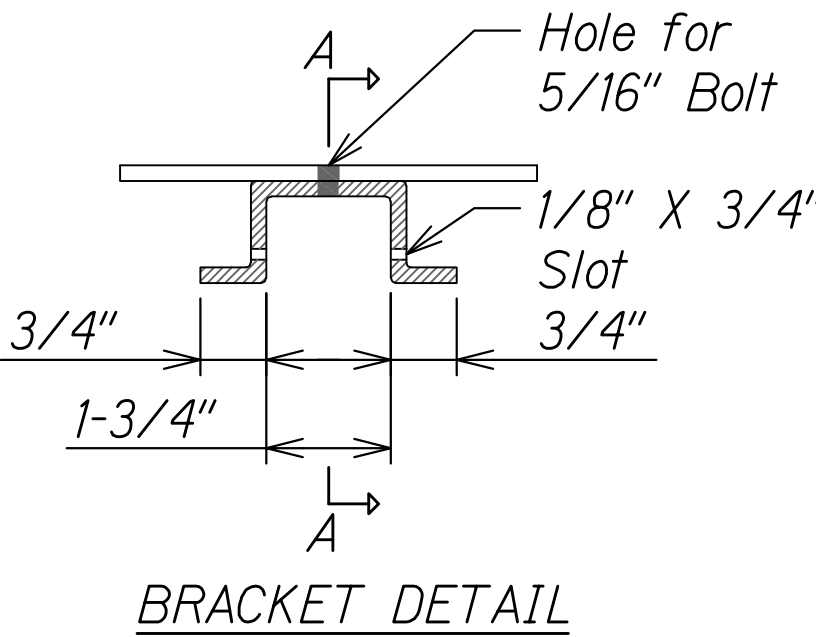
SMOOTH RIDING CONNECTION DETAIL 2  
C103C104  
Scale: Not to Scale



BOLLARD DETAIL 3  
C103C104  
Scale: Not to Scale



FUELING AREA SIGNAGE DETAIL 4  
C103C104  
Scale: Not to Scale



ORIGINAL PLAN	DATE
DESIGNED BY	DESIGNED BY
CHECKED BY	CHECKED BY
NOTED BY	NOTED BY
QUANTITIES BY	QUANTITIES BY
CHECKED BY	CHECKED BY

DETAILS.DWG 7/13/2022 9:55:23 AM

4/30/24  
EXP. DATE  
*Fyenne M. Turro*  
This work was prepared by me or under my supervision.

STATE OF HAWAII  
DEPARTMENT OF TRANSPORTATION  
HIGHWAYS DIVISION

**DETAILS**

MAUI DISTRICT BASEYARD OFFICE EXPANSION &  
RENOVATION, PART 2  
Project No. HWY-M-03-21, Phase 2  
Scale: Not to Scale Date: July 2022