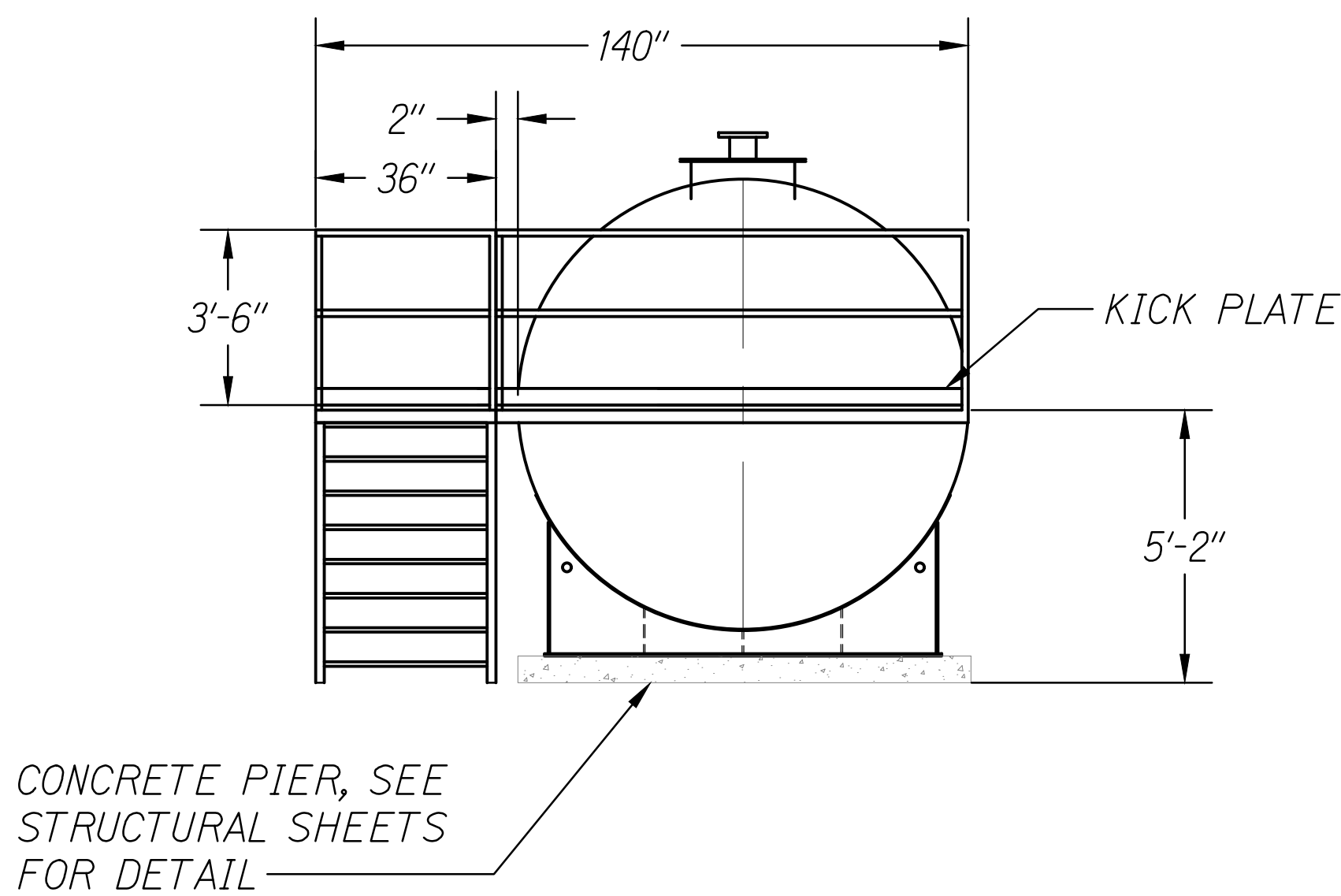
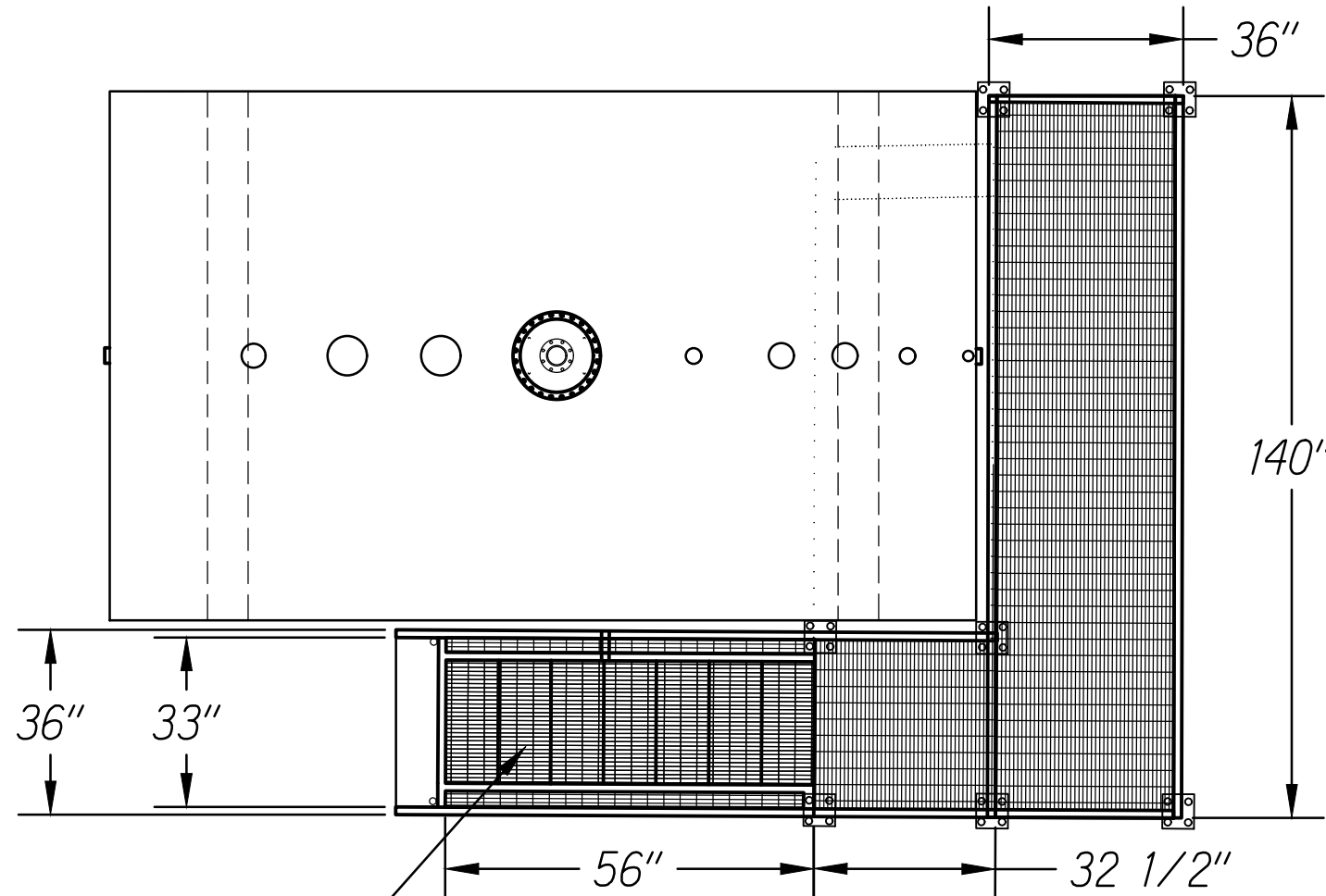


FED. ROAD DIST. NO.	STATE	PROJ. NO.	FISCAL YEAR	SHEET NO.	TOTAL SHEETS
HAWAII	HAW.	HWY-M-03-21, PHASE 2	2022	26	46



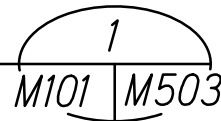
FRONT VIEW

7 TREADS, (CONTRACTOR SHALL VERIFY EXACT NUMBER OF STEPS AND DIMENSIONS ON STAIR AND PLATFORM SHOP DRAWINGS)



TOP VIEW

**5,000 GALLON TANK STAIR AND PLATFORM DETAILS**  
SCALE: NOT TO SCALE



PLATFORM DESIGN DATA

MATERIAL

ALL FRAMEWORK AND GRATING - 316 STAINLESS STEEL OR FRP

HANDRAIL

TOP RAIL, MID RAIL, AND ALL UPRIGHTS CONSTRUCTED OF 316 STAINLESS STEEL OR FRP. 1-1/2" SQUARE TUBING. FB 4"x1/2" KICK PLATE. KICK PLATE CLEARANCE 1/4" MAX. ABOVE GRATING.

WALKWAY:

ALL GRATING AND TREADS ARE 1" THICK. MIN LIVE LOAD 40 PSF

CONSTRUCTION: WELDED OR BONDED, DEPENDING ON MATERIAL USED

FINISH

UNCOATED 316 STAINLESS STEEL OR EPOXY COATED FRP

LADDER AND CATWALK DESIGN AND FABRICATION PER OSHA STANDARDS

EXP. DATE  
4/30/24  
This work was prepared by me or under my supervision.

STATE OF HAWAII  
DEPARTMENT OF TRANSPORTATION  
HIGHWAYS DIVISION

**5,000 GALLON TANK STAIR  
AND PLATFORM DETAILS**

MAUI DISTRICT BASEYARD OFFICE EXPANSION &  
RENOVATION, PART 2  
Project No. HWY-M-03-21, Phase 2  
Scale: AS SHOWN Date: JULY 2022