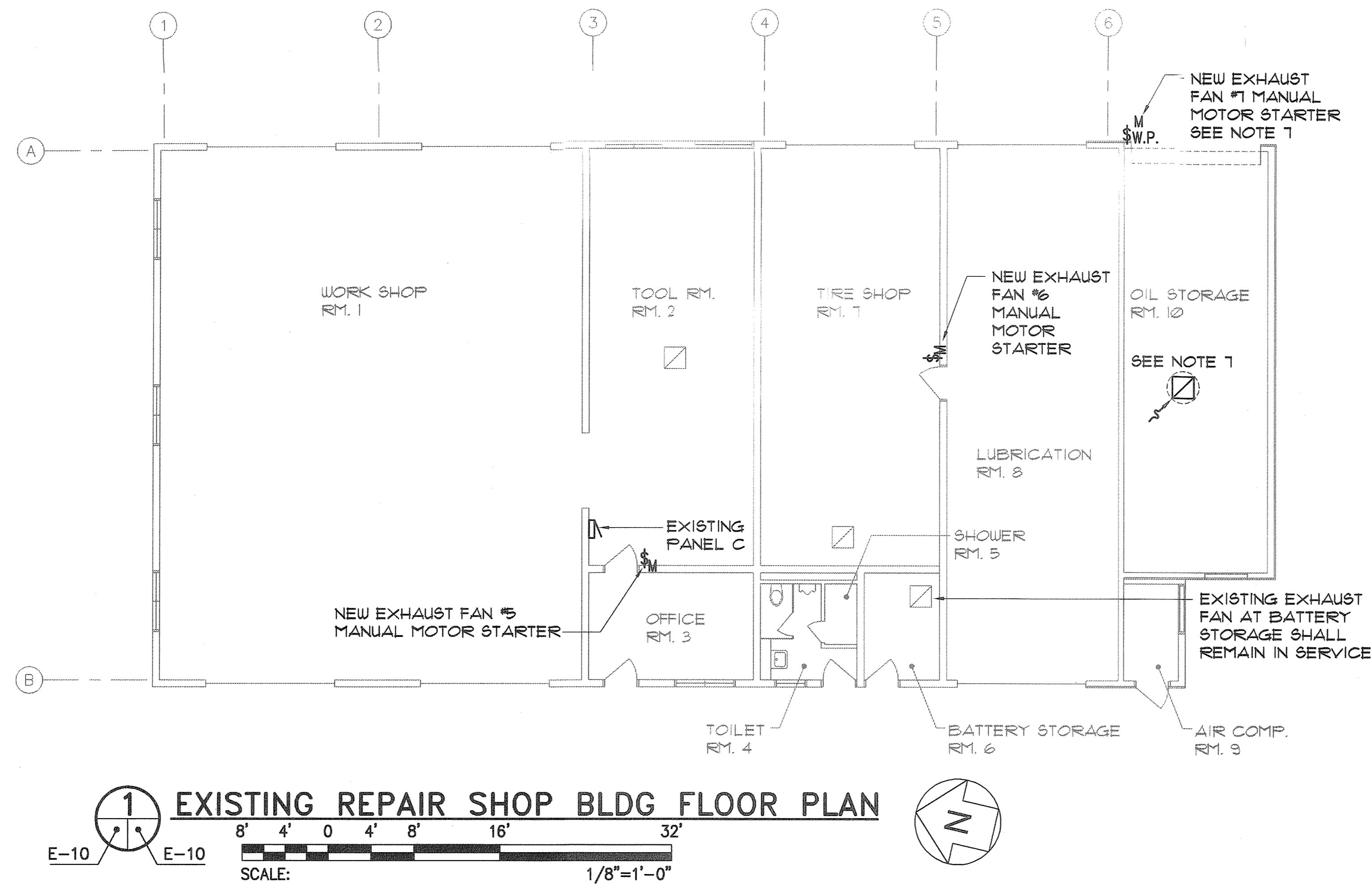


FED. ROAD DIST. NO.	STATE	PROJ. NO.	FISCAL YEAR	SHEET NO.	TOTAL SHEETS
HAWAII	HAW.	HWY-M-08-04M	2005	26	26

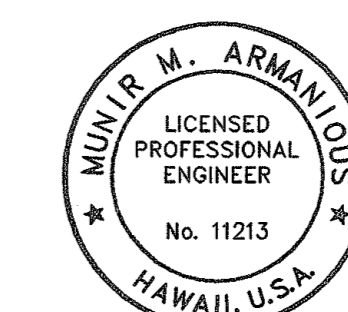
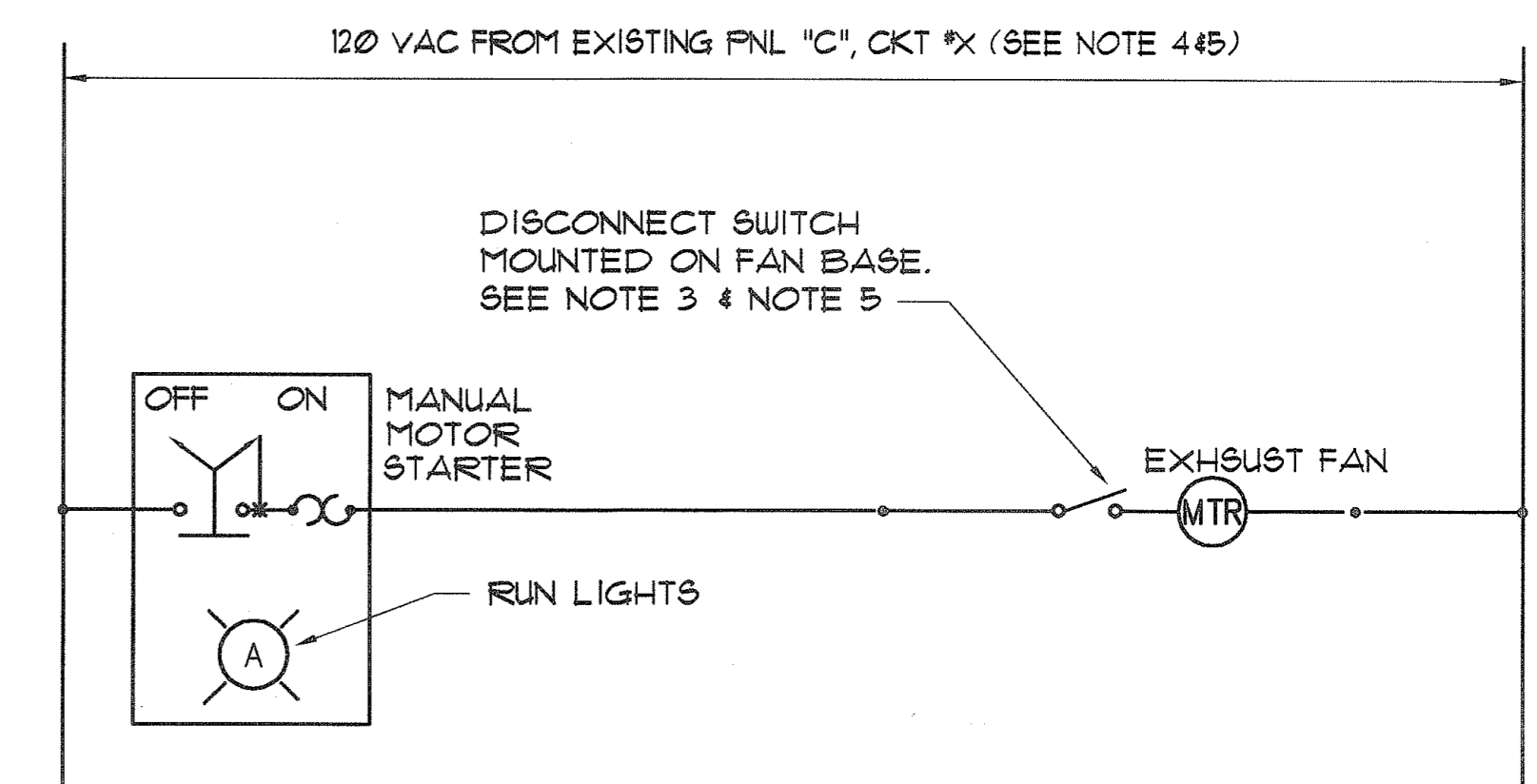
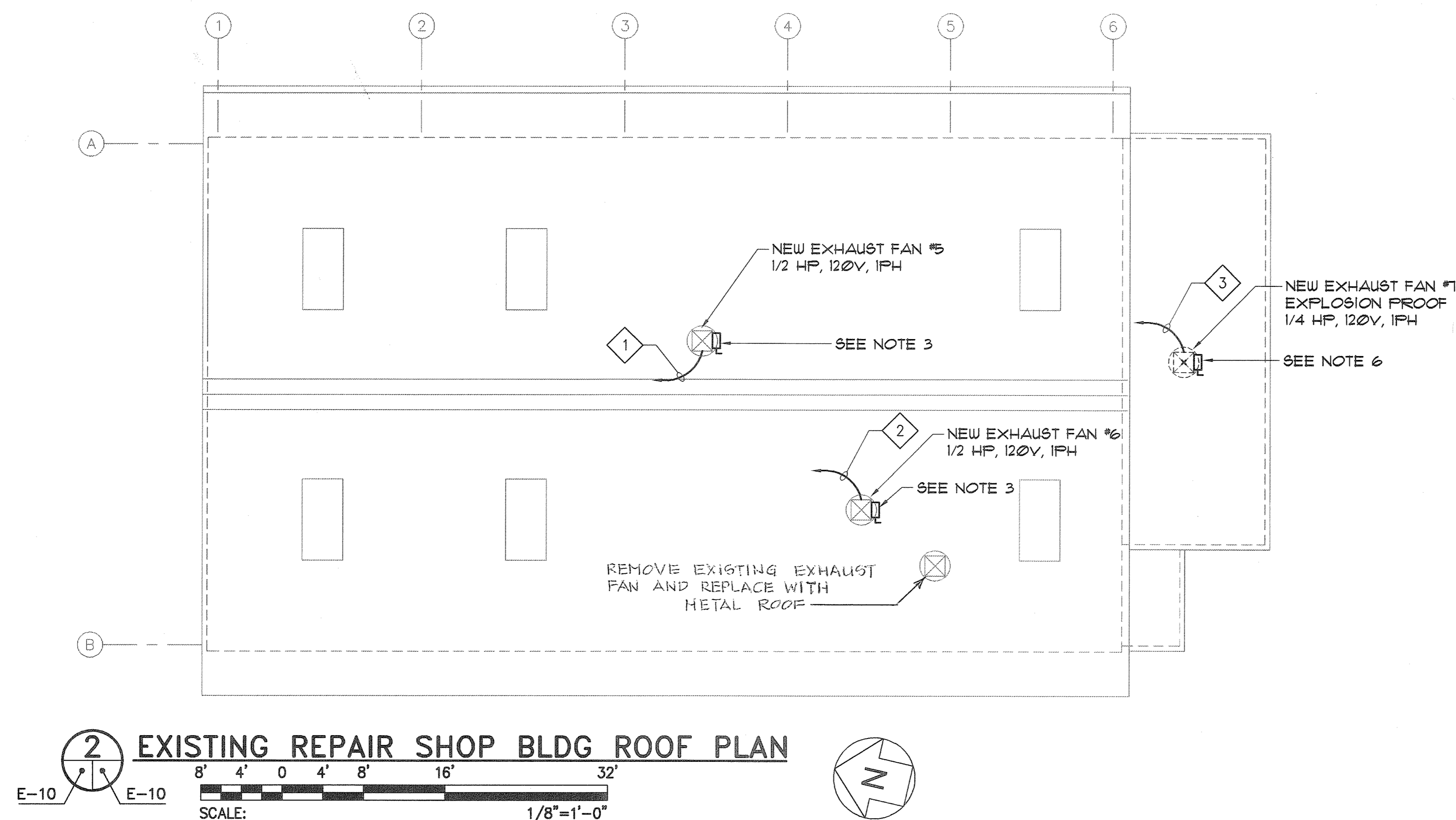


#### NOTES:

- EXISTING BUILDING LAYOUT AND EXHAUST FAN LOCATIONS WERE TAKEN FROM THE BEST AVAILABLE AS-BUILT DRAWINGS. CONTRACTOR TO VERIFY ACTUAL CONDITIONS AND OPERATIONS AND NOTIFY THE CONTRACTING OFFICER IF ANY DISCREPANCIES.
- REMOVE EXISTING EQUIPMENT ASSOCIATED WITH EXISTING EXHAUST FAN INCLUDING BUT NOT LIMITED TO ELECTRICAL DEVICES, CONDUITS, WIRES, J-BOX, ETC. (TYPICAL OF 2)
- NEMA 3R DISCONNECT SWITCH SHALL BE SUPPLIED AND MOUNTED ON FAN BASE BY FAN MANUFACTURER.
- AT THE EXISTING PANEL C REPLACE THE EXISTING CIRCUIT BREAKER FEEDING THE EXISTING FAN #5 & #6 WITH NEW CIRCUIT BREAKER. THE NEW CIRCUIT BREAKER SHALL HAVE A SHORT CIRCUIT RATING NOT LESS THAN THE EXISTING.  
FAN#5 CKT#17 20A/1-POLE  
FAN#6 CKT#14 20A/1-POLE
- AT THE EXISTING PANEL C PROVIDE NEW CIRCUIT 15A/1-POLE IN AVAILABLE SPACE. THE NEW CIRCUIT BREAKER SHALL HAVE A SHORT CIRCUIT RATING NOT LESS THAN THE EXISTING.
- NEMA 7 EXPLOSION PROOF DISCONNECT SWITCH SUITABLE FOR CLASS 1, DIVISION 1, GROUP D HAZARDOUS LOCATION SHALL BE SUPPLIED AND MOUNTED ON THE FAN BASE BY FAN MANUFACTURER.
- EXISTING OIL STORAGE ROOM AREA IS CLASSIFIED AS A CLASS 1, DIVISION 1, GROUP D HAZARDOUS LOCATION, ALL ELECTRICAL WORK IN THIS AREA SHALL BE PERFORMED IN ACCORDANCE WITH THE NEC FOR THIS CLASSIFICATION SEE SHEET No. E-1 FOR GENERAL NOTES #15

#### KEY NOTES:

- 2#12 & 1#12 GND - 3/4" (FROM EXISTING PANEL C CKT #17 TO NEW EXHAUST FAN #5 THRU THE NEW FAN MANUAL MOTOR STARTER SWITCH).
- 2#12 & 1#12 GND - 3/4" (FROM EXISTING PANEL C CKT #14 TO NEW EXHAUST FAN #6 THRU THE NEW FAN MANUAL MOTOR STARTER SWITCH).
- 2#12 & 1#12 GND - 3/4" (FROM EXISTING PANEL C SPARE CIRCUIT TO NEW EXHAUST FAN #7 THRU THE NEW FAN MANUAL MOTOR STARTER SWITCH). SEE NOTE 7



THIS WORK WAS PREPARED BY ME OR UNDER MY SUPERVISION.  
Signature: *Munir M. Armanious*

STATE OF HAWAII  
DEPARTMENT OF TRANSPORTATION  
HIGHWAYS DIVISION  
EXISTING REPAIR SHOP BLDG  
FLOOR & ROOF PLAN  
NEW EXHAUST FAN DIAGRAM  
MAUI DISTRICT BASEYARD  
REPAIR AND MAINTENANCE OF  
BUILDINGS AND GROUNDS, PHASE 3  
PROJECT NO. HWY-M-08-04M

SCALE: AS SHOWN DATE: MAY 2005  
SHEET No. E-10 OF 10 SHEETS

"AS-BUILT"