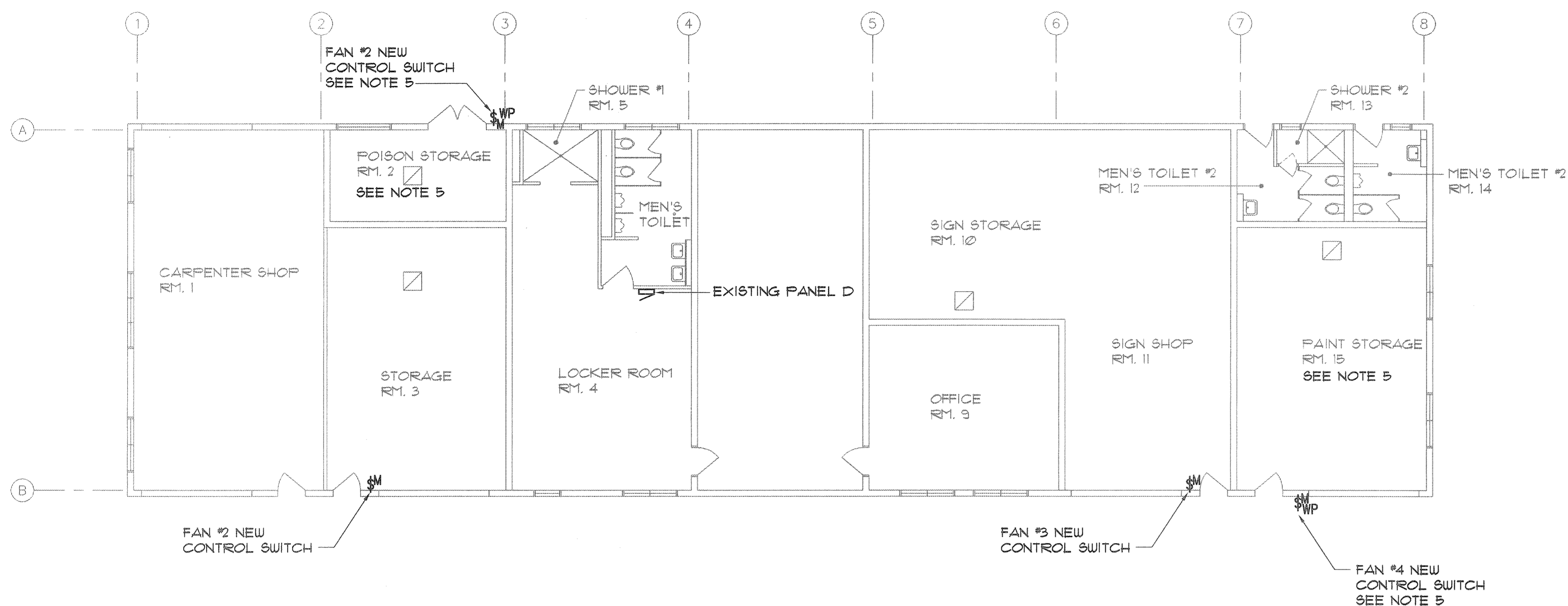
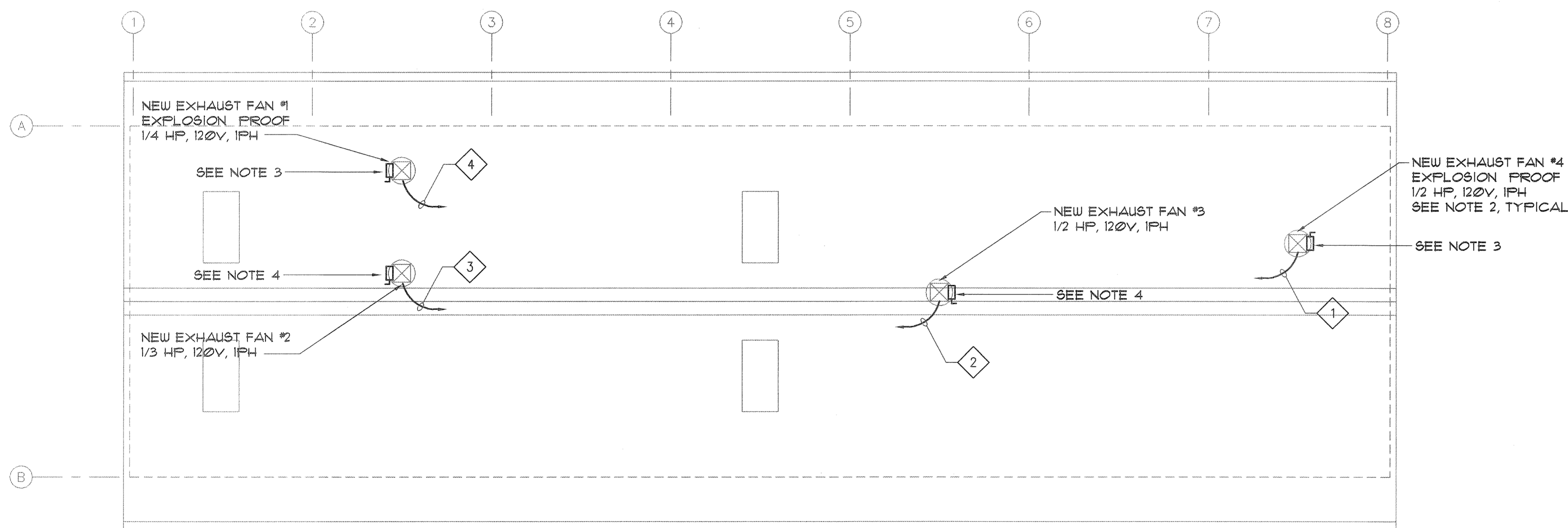


FED. ROAD DIST. NO.	STATE	PROJ. NO.	FISCAL YEAR	SHEET NO.	TOTAL SHEETS
HAWAII	HAW.	HWY-M-08-04M	2005	25	106



1 EXISTING MAINTENANCE OFFICE AND SHOP BLDG FLOOR PLAN
 SCALE: 1/8"=1'-0"
 E-9



2 EXISTING MAINTENANCE OFFICE AND SHOP BLDG ROOF PLAN
 SCALE: 1/8"=1'-0"
 E-9

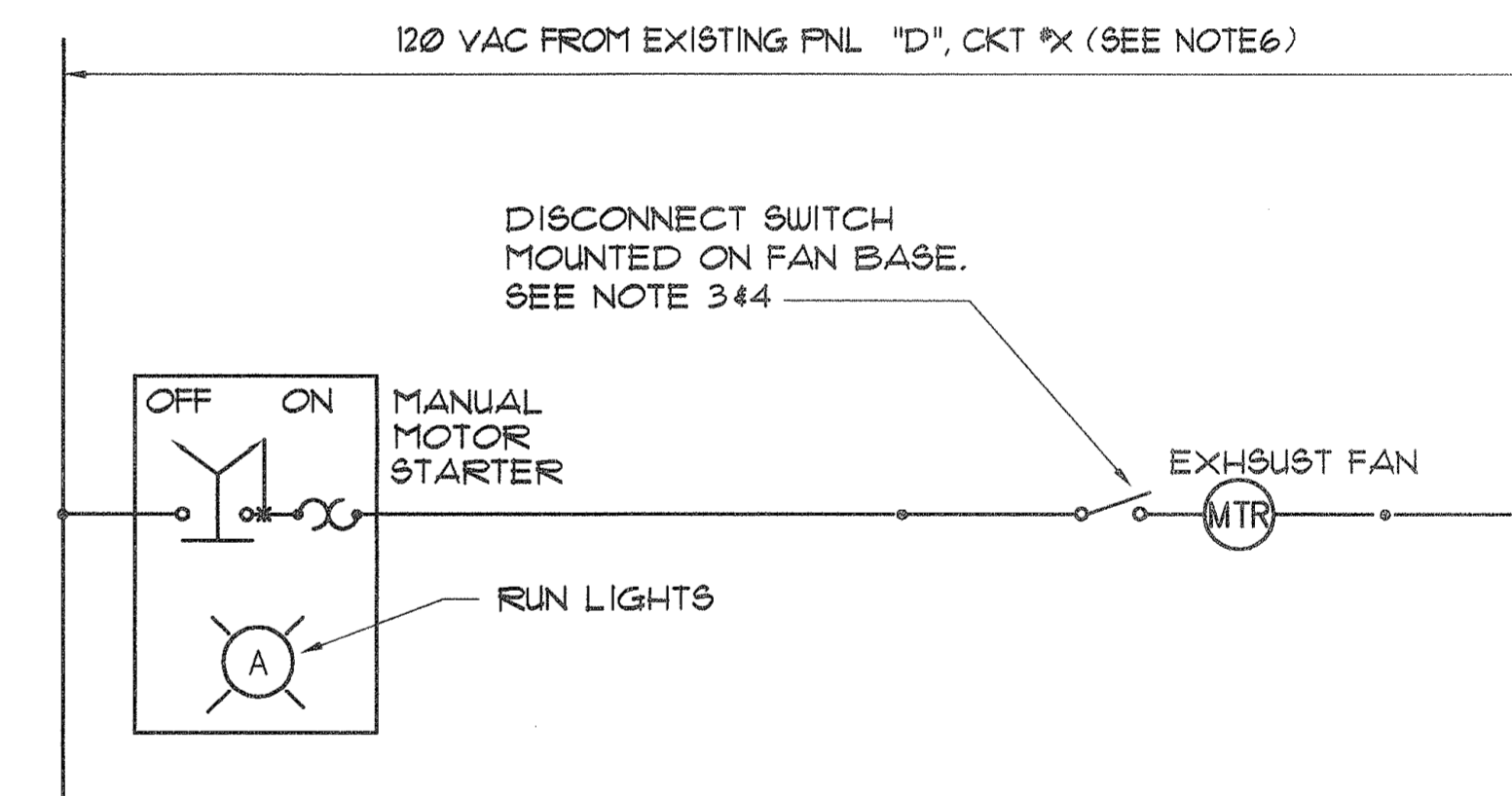
NOTES:

- EXISTING BUILDING LAYOUT AND EXHAUST FAN LOCATIONS WERE TAKEN FROM THE BEST AVAILABLE AS-BUILT DRAWINGS. CONTRACTOR TO VERIFY ACTUAL CONDITIONS AND OPERATIONS AND NOTIFY THE CONTRACTING OFFICER IF ANY DISCREPANCIES.
- REMOVE EXISTING EQUIPMENT ASSOCIATED WITH EXISTING EXHAUST FAN INCLUDING BUT NOT LIMITED TO ELECTRICAL DEVICES, CONDUITS, WIRES, J-BOX, ETC. (TYPICAL OF 4)
- NEMA 7 EXPLOSION PROOF DISCONNECT SWITCH SUITABLE FOR CLASS 1, DIVISION 1, GROUP D HAZARDOUS LOCATION SHALL BE SUPPLIED AND MOUNTED ON THE FAN BASE BY FAN MANUFACTURER.
- NEMA 3R DISCONNECT SWITCH SHALL BE SUPPLIED AND MOUNTED ON FAN BASE BY FAN MANUFACTURER.
- EXISTING PAINT STORAGE ROOM AND POISON STORAGE AREA IS CLASSIFIED AS A CLASS 1, DIVISION 1, GROUP D HAZARDOUS LOCATION, ALL ELECTRICAL WORK IN THIS AREA SHALL BE PERFORMED IN ACCORDANCE WITH THE NEC FOR THIS CLASSIFICATION. SEE SHEET No. E-1 FOR GENERAL NOTES #15.
- AT THE EXISTING PANEL D SECTION 1 & 2 REPLACE THE EXISTING CIRCUIT BREAKER FEEDING THE EXISTING FAN WITH NEW CIRCUIT BREAKER, THE NEW CIRCUIT BREAKER SHALL HAVE A SHORT CIRCUIT RATING NOT LESS THAN THE EXISTING.

FAN#1 CKT#16 15A/1-POLE
 FAN#2 CKT#18 15A/1-POLE
 FAN#3 CKT#15 20A/1-POLE
 FAN#4 CKT#48 20A/1-POLE

KEY NOTES:

- 2#12 & 1#12 GND - 3/4"C (FROM EXISTING PANEL D SECTION 2 CKT #48 TO NEW EXHAUST FAN #4 THRU THE NEW EXHAUST FAN MANUAL MOTOR STARTER SWITCH) SEE NOTE 5.
- 2#12 & 1#12 GND - 3/4"C (FROM EXISTING PANEL D SECTION 1 CKT #15 TO NEW EXHAUST FAN #3 THRU THE NEW EXHAUST FAN MANUAL MOTOR STARTER SWITCH).
- 2#12 & 1#12 GND - 3/4"C (FROM EXISTING PANEL D SECTION 1 CKT #18 TO NEW EXHAUST FAN #2 THRU THE NEW EXHAUST FAN MANUAL MOTOR STARTER SWITCH).
- 2#12 & 1#12 GND - 3/4"C (FROM EXISTING PANEL D SECTION 1 CKT #16 TO NEW EXHAUST FAN #1 THRU THE NEW EXHAUST FAN MANUAL MOTOR STARTER SWITCH) SEE NOTE 5.



3 EXHAUST FAN DIAGRAM
 NOT TO SCALE
 E-9



THIS WORK WAS PREPARED BY ME OR UNDER MY SUPERVISION.

Munir M. Armanious
 Signature

STATE OF HAWAII
 DEPARTMENT OF TRANSPORTATION
 HIGHWAYS DIVISION
 EXISTING MAINTENANCE OFFICE AND SHOP BLDG
 FLOOR & ROOF PLAN
 NEW EXHAUST FAN DIAGRAM
 MAUI DISTRICT BASEYARD
 REPAIR AND MAINTENANCE OF
 BUILDINGS AND GROUNDS, PHASE 3
 PROJECT NO. HWY-M-08-04M

SCALE: AS SHOWN DATE: MAY 2005

SHEET No. E-9 OF 25 SHEETS

Job No. 1610/201
 05/02/05 13:54 Final Submittal
 H610E237.DWG