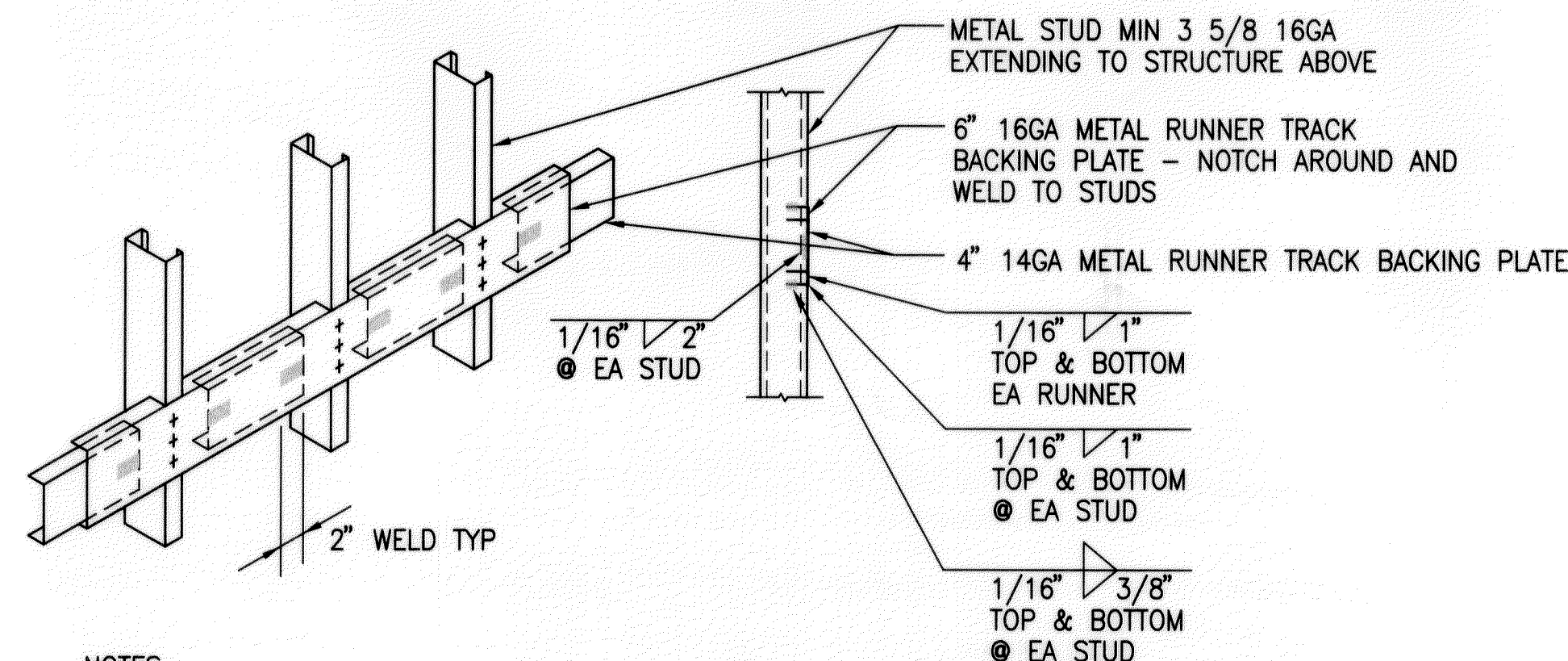


Diagram A: FULL HEIGHT CABINET. BACKING PLATE TYPE B - SEE DETAIL 3/A7.1. COORDINATE HEIGHTS W/ CABINETS. EXTEND BACKING PLATE ONE FULL STUD BEYOND END OF CABINET. FIN FL.

Diagram B: WALL CABINET. BACKING PLATE TYPE C - SEE DETAIL 4/A7.1. COORDINATE HEIGHTS W/ OVERHEAD CABINETS. EXTEND BACKING PLATE ONE FULL STUD BEYOND END OF CABINET. FIN FL.

Diagram C: BASE CABINET. BACKING PLATE TYPE B2 - SEE DETAIL 3/A7.1. COORDINATE HEIGHTS W/ BASE CABINET. EXTEND BACKING PLATE ONE FULL STUD BEYOND END OF CABINET. FIN FL.

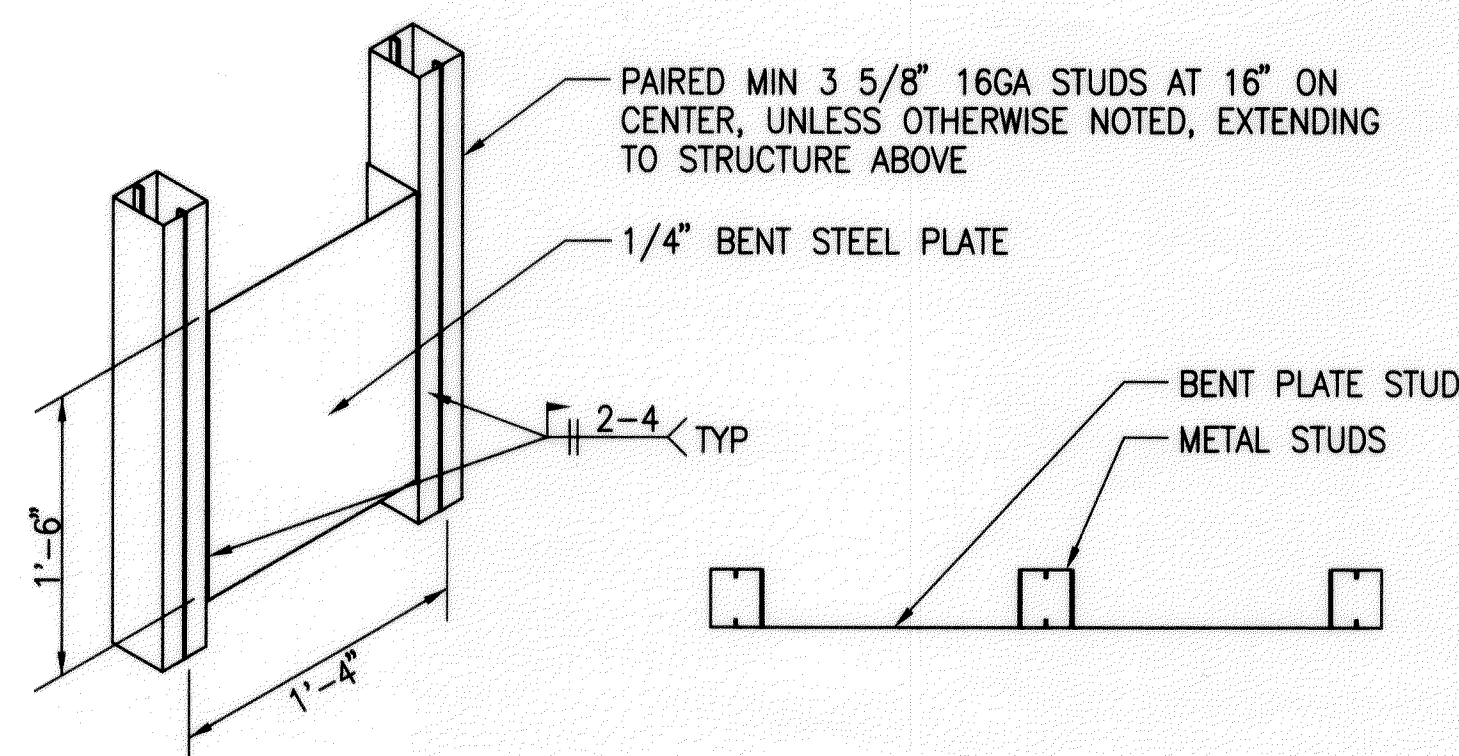
A8.1 SCALE: 1/4"=1'-0"



1. PROVIDE TYPE A BACKING PLATE FOR ITEMS LISTED.
2. VERIFY LENGTH, HEIGHT AND LOCATION OF BACKING PLATE AND NUMBER REQUIRED FOR ITEM TO BE MOUNTED.

1. PROVIDE TYPE C BACKING PLATE FOR UPPER WALL MOUNTED UPPER CABINETS (OVER 2 SHELVES) & WALL MOUNTED EQUIPMENT WHICH WEIGH OR SUPPORT WEIGHTS OF LESS THAN 200 POUNDS PER LINEAR FOOT.
2. USE #12 SELF TAPPING SHEET METAL SCREWS WHEN ATTACHING ITEMS TO BACKING PLATE.
3. METAL STUD FLANGES TO BE CONTINUOUS.
4. VERIFY LENGTH, HEIGHT, LOCATION AND NUMBER OF BACKING PLATES REQUIRED FOR ITEM TO BE MOUNTED.

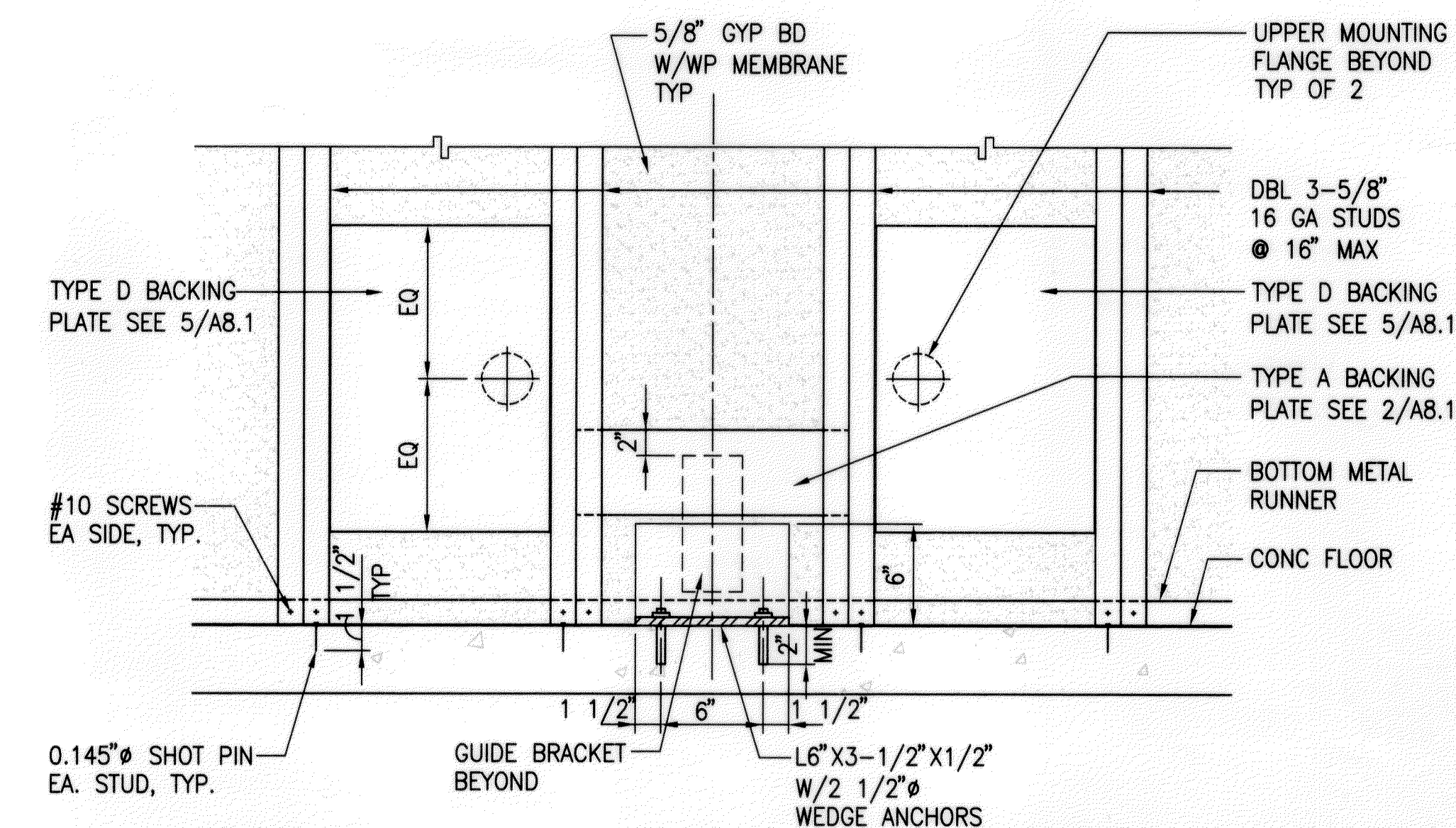
A8.1 SCALE: 1"=1'-0"



1. PROVIDE TYPE D BACKING PLATE FOR WALL MOUNTED EQUIPMENT SCHEDULED OR DETAILED.
2. FOR METHOD OF FASTENING EQUIPMENT TO BACKING PLATE, REFER TO MOUNTING INSTRUCTIONS FOR EQUIPMENT OR TO APPROPRIATE DETAIL.
3. CONFIRM LENGTH, HEIGHT, LOCATION AND NUMBER OF BACKING PATES REQUIRED FOR ITEM TO BE MOUNTED.
4. FOR ITEMS OVER 16" WIDE, DETAIL MAY BE REPEATED AS NECESSARY. SEE PLAN.

A8 1 SCALE: 1"=1'-0"

SCALE: 1"=1'-0"



A8.1 SCALE: 1-1/2"=1'-0"

6143A25.DWG 08:38 04/03/00 M:\DWG\6143-01\ARCH

1' 6" 0 1' 2
SCALE: 1"=1'-0"



STATE OF HAWAII
DEPARTMENT OF TRANSPORTATION
HIGHWAYS DIVISION

TP. BACKING PL. INSTALLATIONS
FOR METAL WALL FRAMING

MOLOKAI BASEYARD
MOLOKAI INDUSTRIAL PARK
Project No. HWY-M-05-98

Scale: As Noted Date: SEPT. 13, 2001

SHEET No. A8.1 OF A8.3 SHEETS