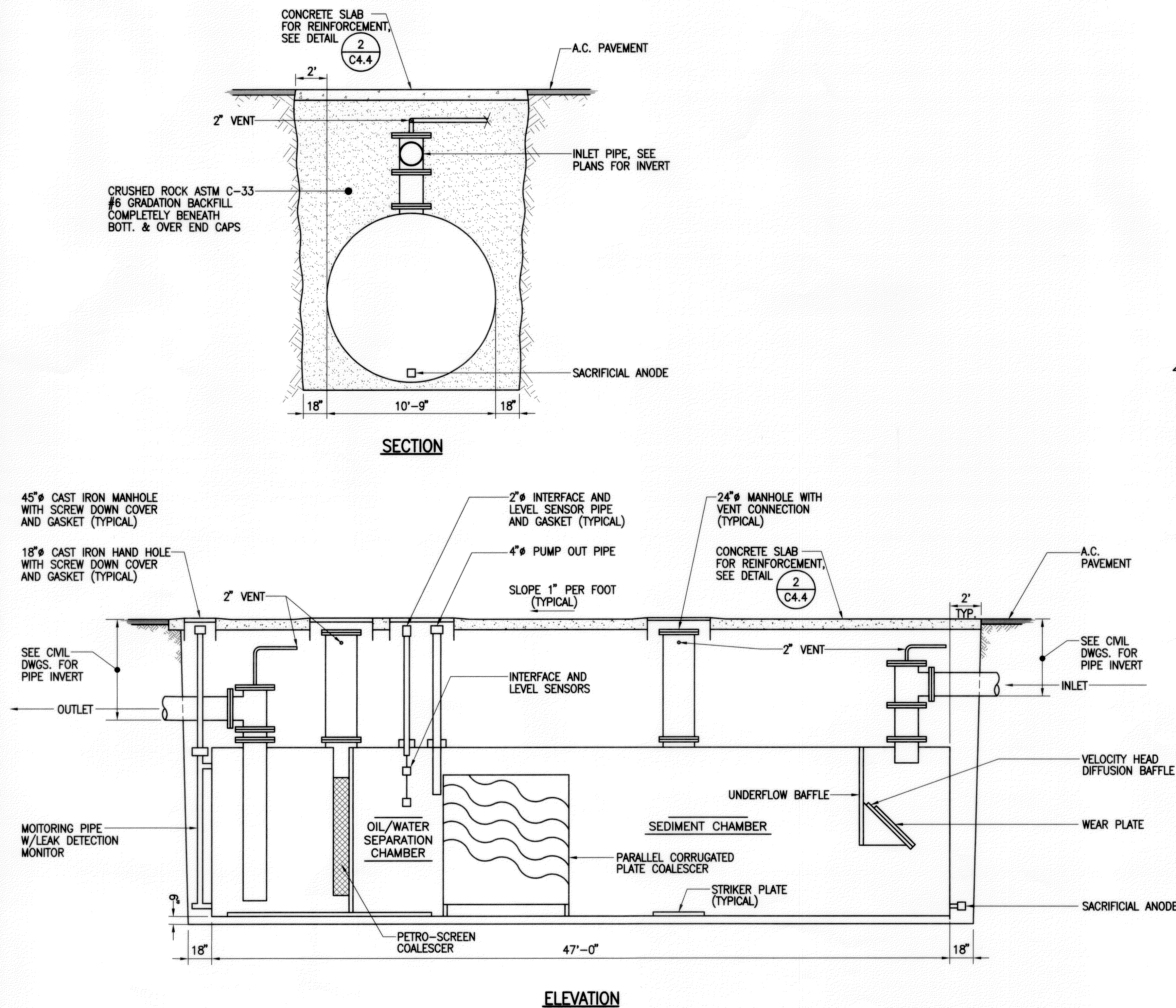
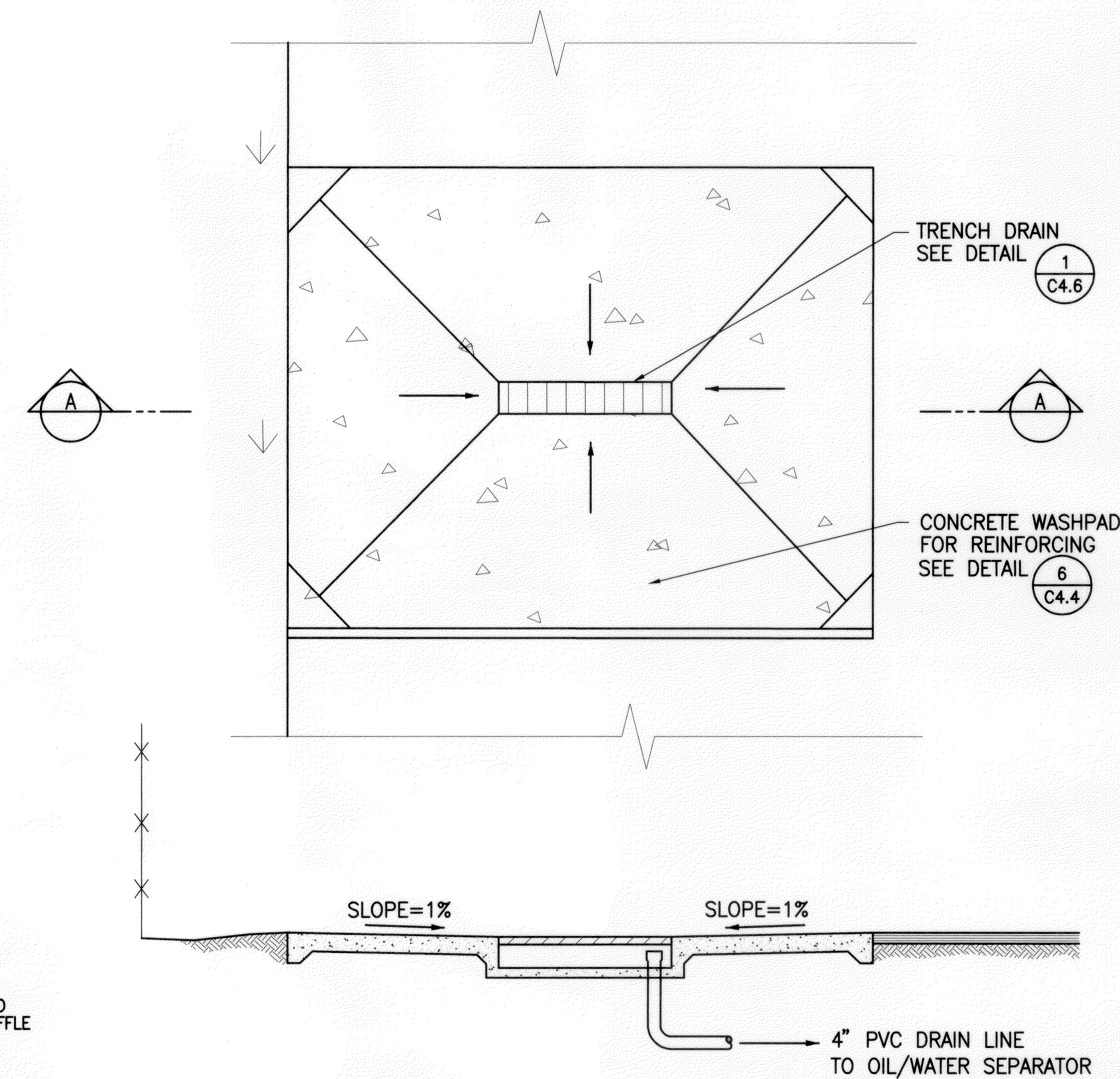


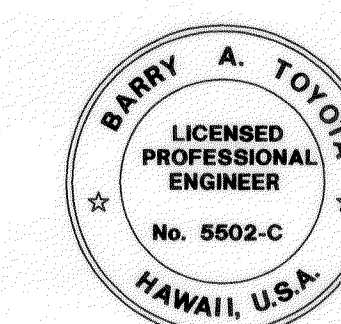
| FED. ROAD DIST. NO. | STATE | FED. AID PROJ. NO. | FISCAL YEAR | SHEET NO. | TOTAL SHEETS |
|---------------------|-------|--------------------|-------------|-----------|--------------|
| HAWAII | HAW. | HWY-M-05-98 | 2002 | 20 | 99 |



1 OIL/WATER SEPARATOR DETAIL
C4.8 SCALE: NONE



| | |
|-------------------|------|
| SURVEY PLOTTED BY | DATE |
| DRAWN BY | |
| DESIGNED BY | |
| QUANTITIES BY | |
| CHECKED BY | |
| ORIGINAL PLAN | |
| NOTEBOOK | |
| No. | |



THIS WORK WAS PREPARED BY
ME OR UNDER MY SUPERVISION

Barry A. Toyota

| DATE | REVISION |
|------|----------|
| | |

STATE OF HAWAII
DEPARTMENT OF TRANSPORTATION
HIGHWAYS DIVISION

OIL/WATER SEPARATOR & MISCELLANEOUS DETAILS

MOLOKAI BASEYARD
MOLOKAI INDUSTRIAL PARK
Project No. HWY-M-05-98

Scale: As Noted Date: Sept. 13, 2001

SHEET No. C4.8 OF C4.10 SHEETS