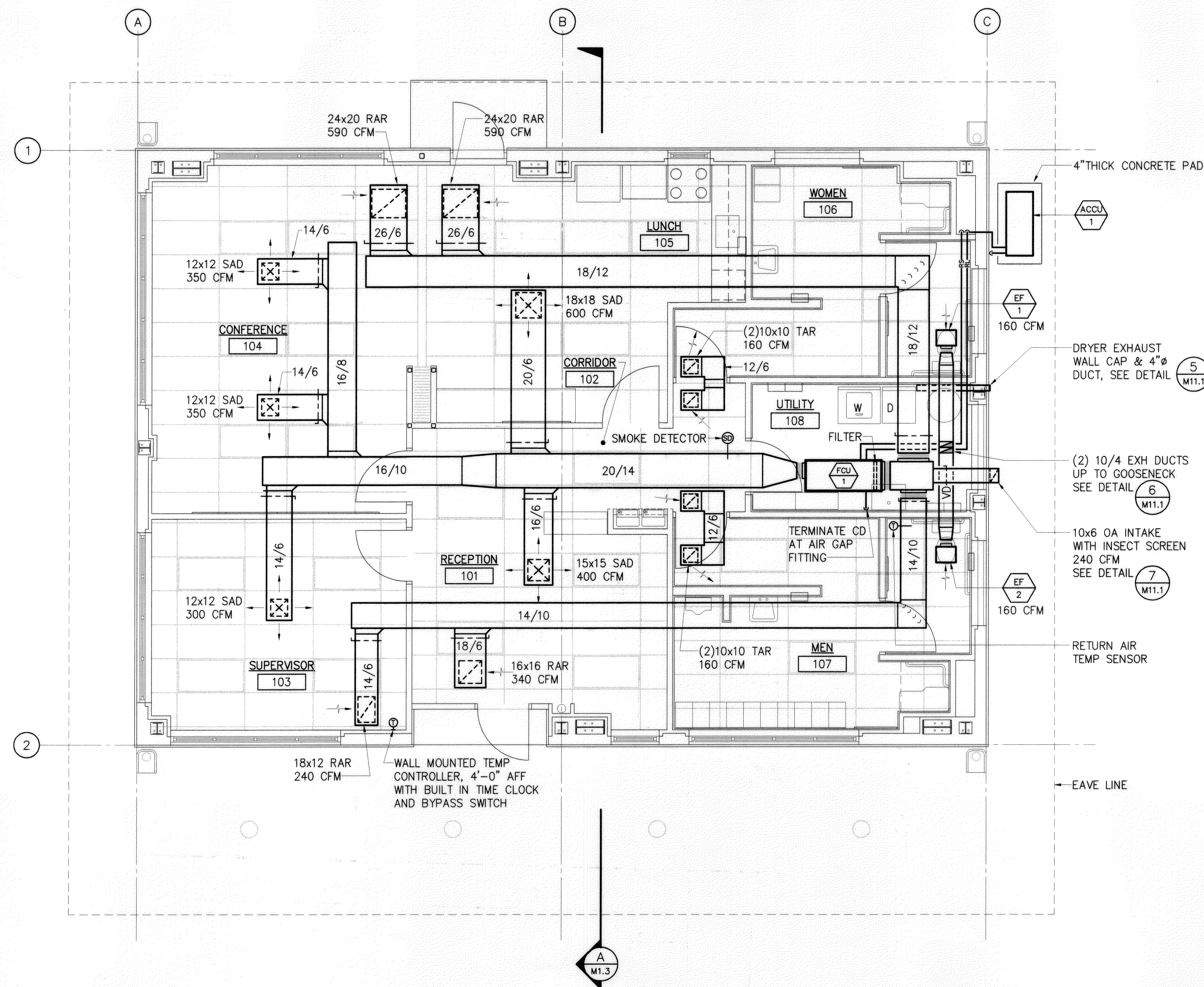


FED. ROAD DIST. NO.	STATE	FED. AID PROJ. NO.	FISCAL YEAR	SHEET NO.	TOTAL SHEETS
HAWAII	HAW.	HWY-M-05-98	2002	75	99



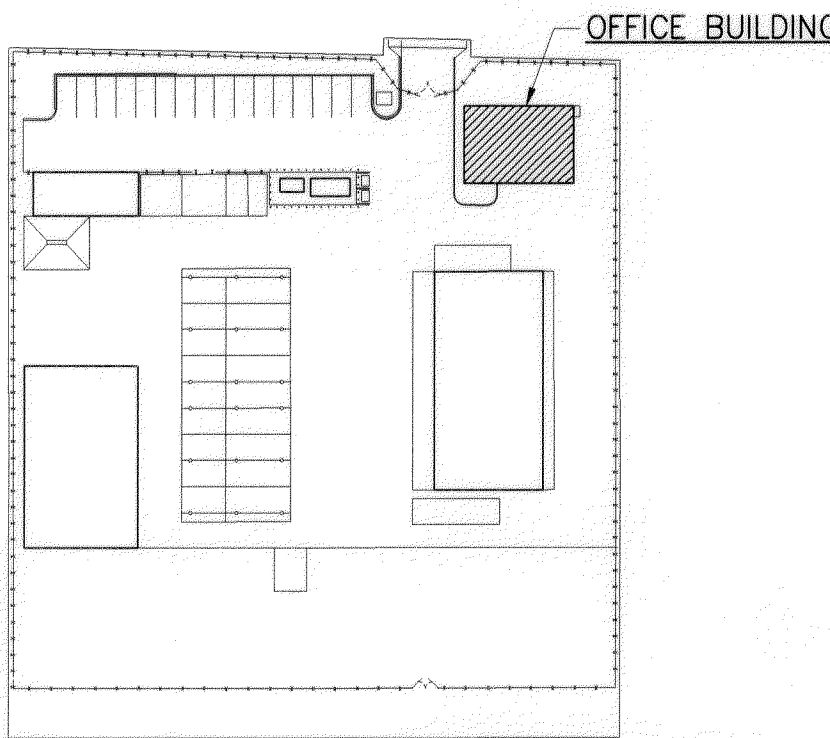
NOTE:  
FOR FCU MOUNTING AND DX PIPING  
SEE 1 AND 2  
M11.1 M11.1

DRYER EXHAUST  
WALL CAP & 4" Ø  
DUCT, SEE DETAIL 5  
M11.1

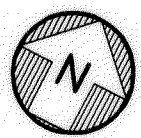
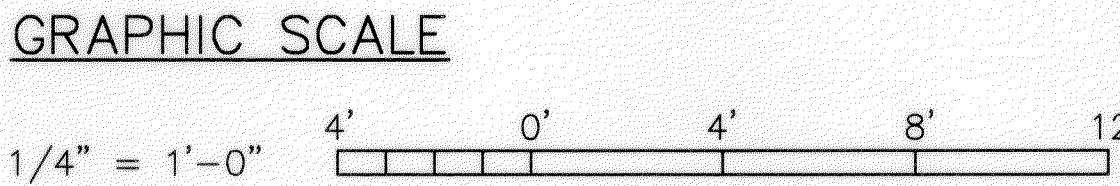
(2) 10/4 EXH DUCTS  
UP TO GOOSENECK  
SEE DETAIL 6  
M11.1

10x6 OA INTAKE  
WITH INSECT SCREEN  
240 CFM  
SEE DETAIL 7  
M11.1

RETURN AIR  
TEMP SENSOR



**KEY PLAN**  
SCALE: NONE



# **OFFICE BUILDING AIR CONDITIONING & VENTILATION FLOOR PLAN**

SCALE: 1/4" = 1'-0"



THIS WORK WAS PREPARED BY  
ME OR UNDER MY SUPERVISION

*Ken I. Mashima*

STATE OF HAWAII  
DEPARTMENT OF TRANSPORTATION  
HIGHWAYS DIVISION

*OFFICE BUILDING  
A/C & VENT. FLOOR PLAN*

MOLOKAI BASEYARD  
MOLOKAI INDUSTRIAL PARK  
Project No. HWY-M-05-98

Scale: As Noted Date: SEPT 13, 2001

**SHEET No. M1.2 OF M1.4 SHEETS**

OFFICE BUILDING

ORIGINAL PLAN	SURVEY PLOTTED BY	DATE
	DRAWN BY	
	TRACED BY	
	CHECKED BY	
NOTEBOOK	QUANTITIES BY	
	CHECKED BY	
No.		