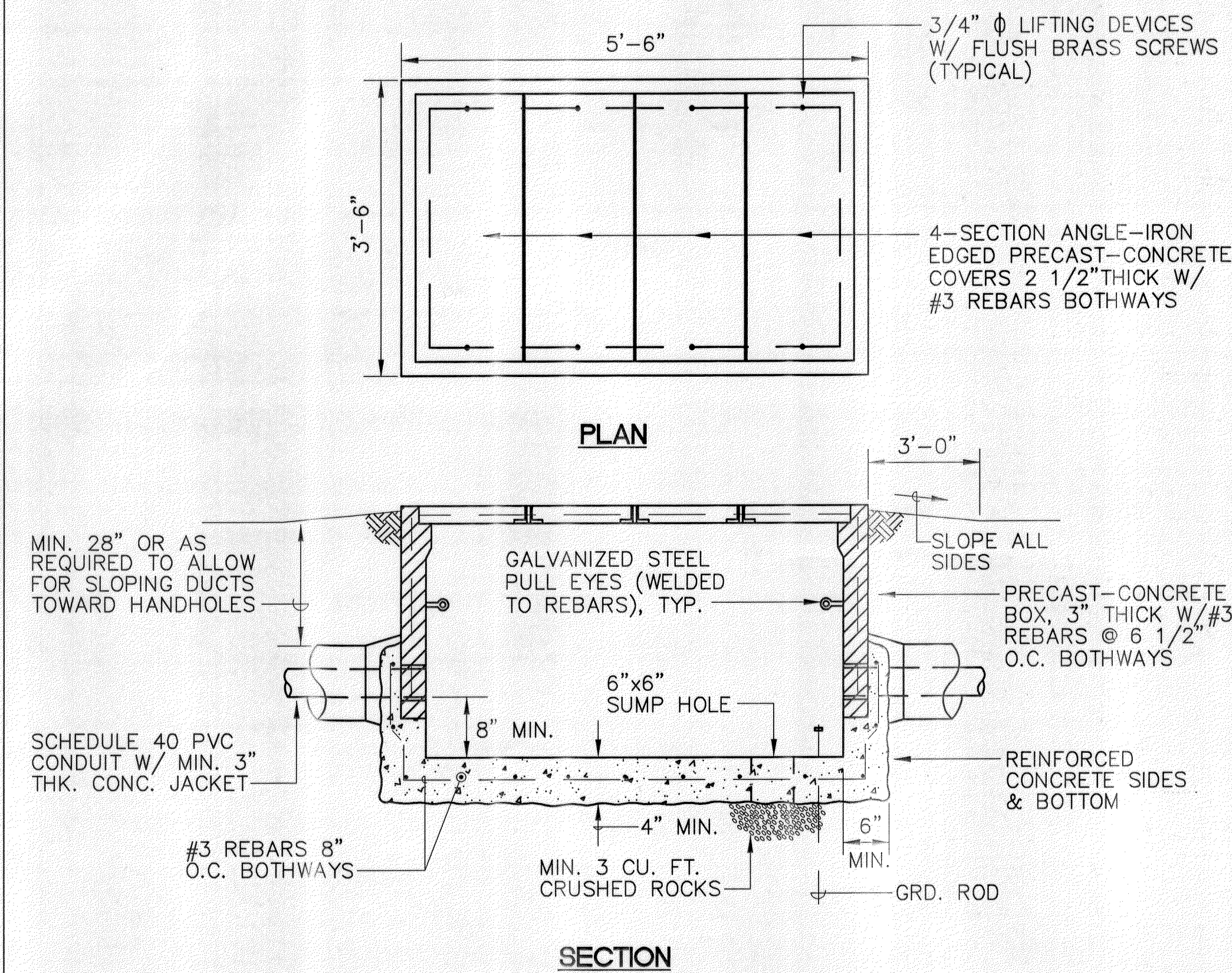






FED. ROAD DIST. NO.	STATE	PROJ. NO.	FISCAL YEAR	SHEET NO.	TOTAL SHEETS
HAWAII	HAW.	HWY-M-05-98	2002	99	99

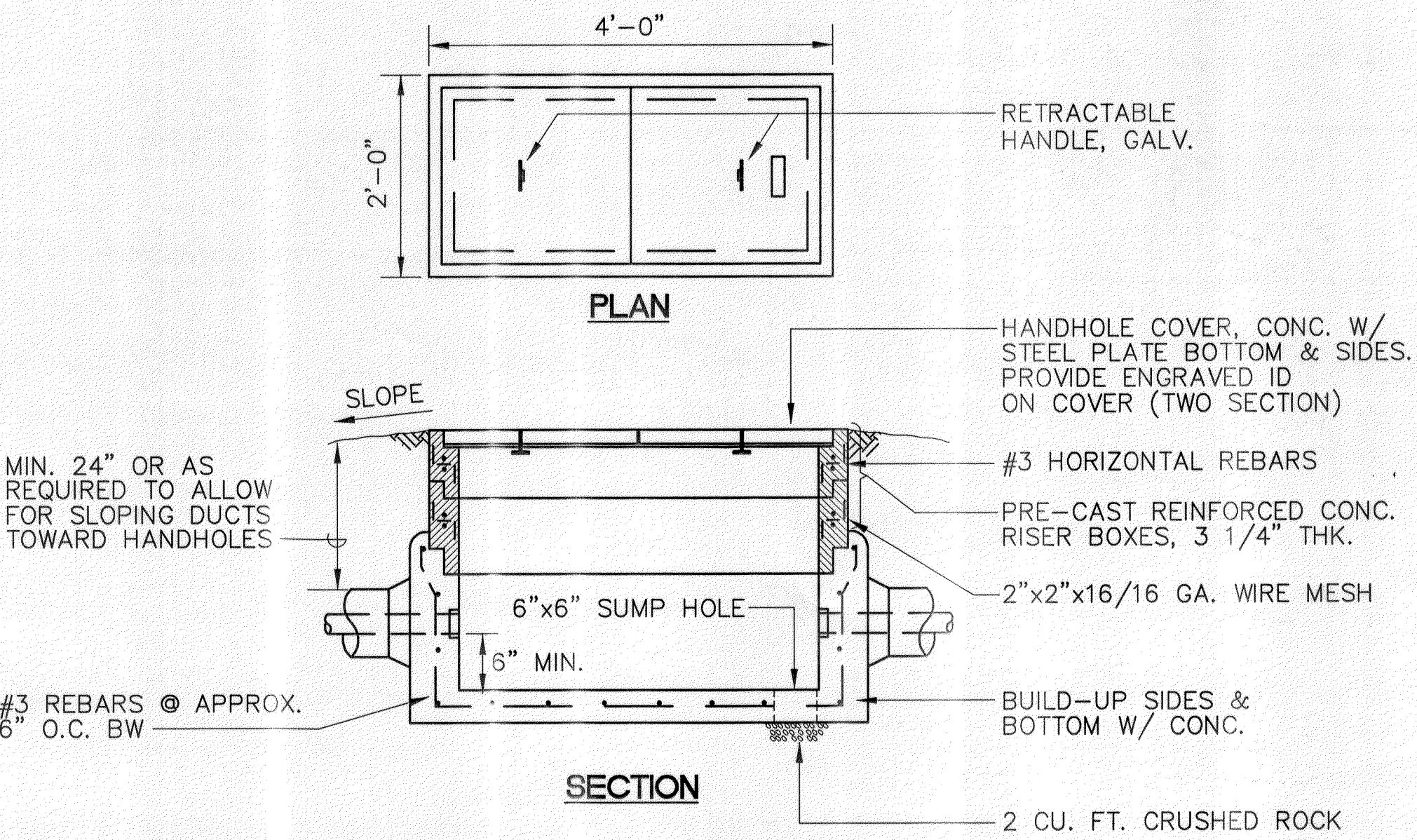


### 3' x 5' HANDHOLE

N.T.S.

#### NOTES:

- ONE COVER SECTION ENGRAVED W/ 4" HIGH LETTERING "ELEC".
- FURNISH 2 LIFTING HANDLES FOR EACH COVER.
- PROVIDE DUCTSEAL AT ENDBELLS.

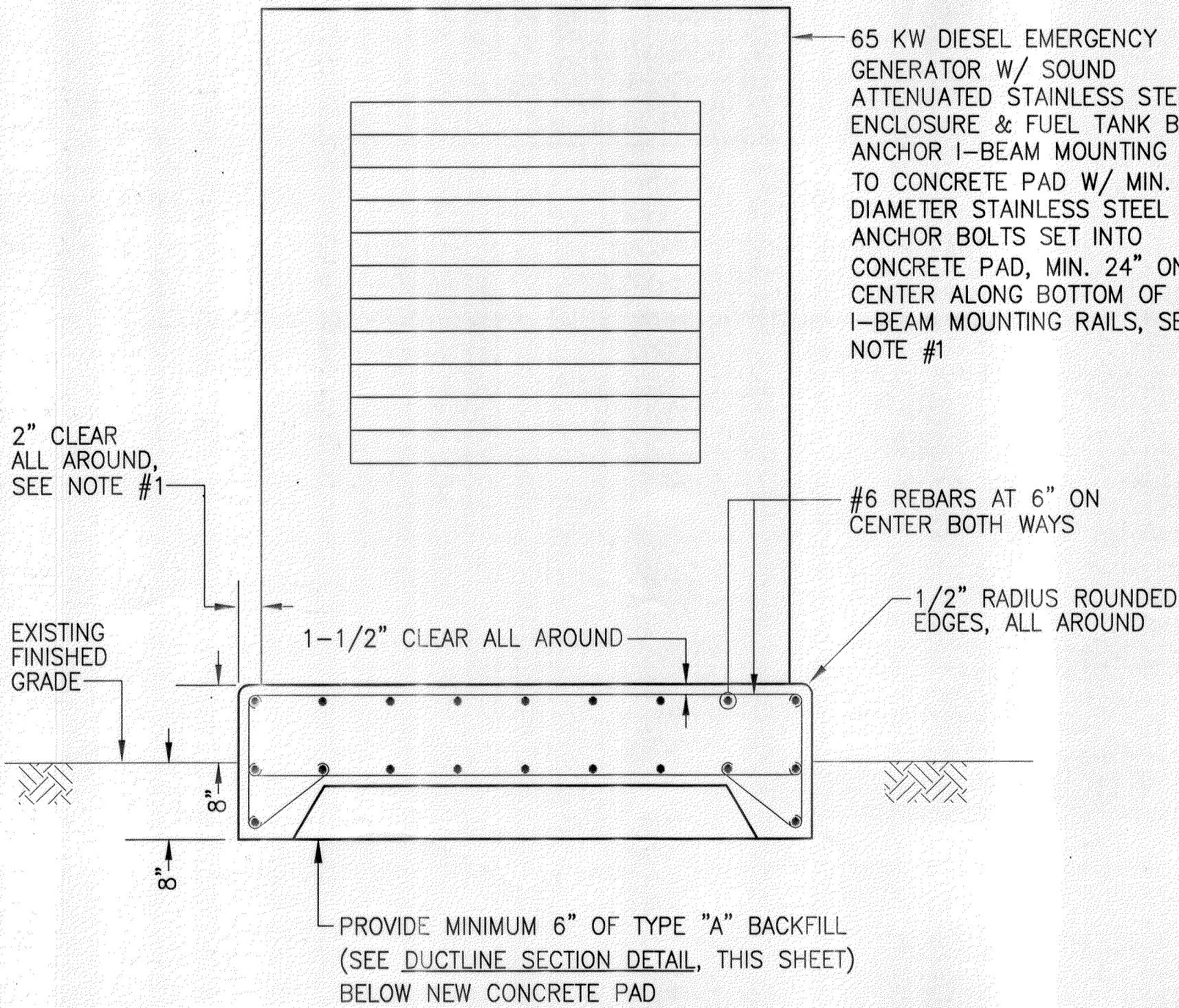


### 2' X 4' HANDHOLE

N.T.S.

#### NOTES:

- ONE COVER SECTION ENGRAVED W/ 4" HIGH LETTERING "TEL", "CATV" OR "TEL/CATV", AS APPLICABLE PER PLAN.
- PROVIDE DUCTSEAL AT ENDBELLS.

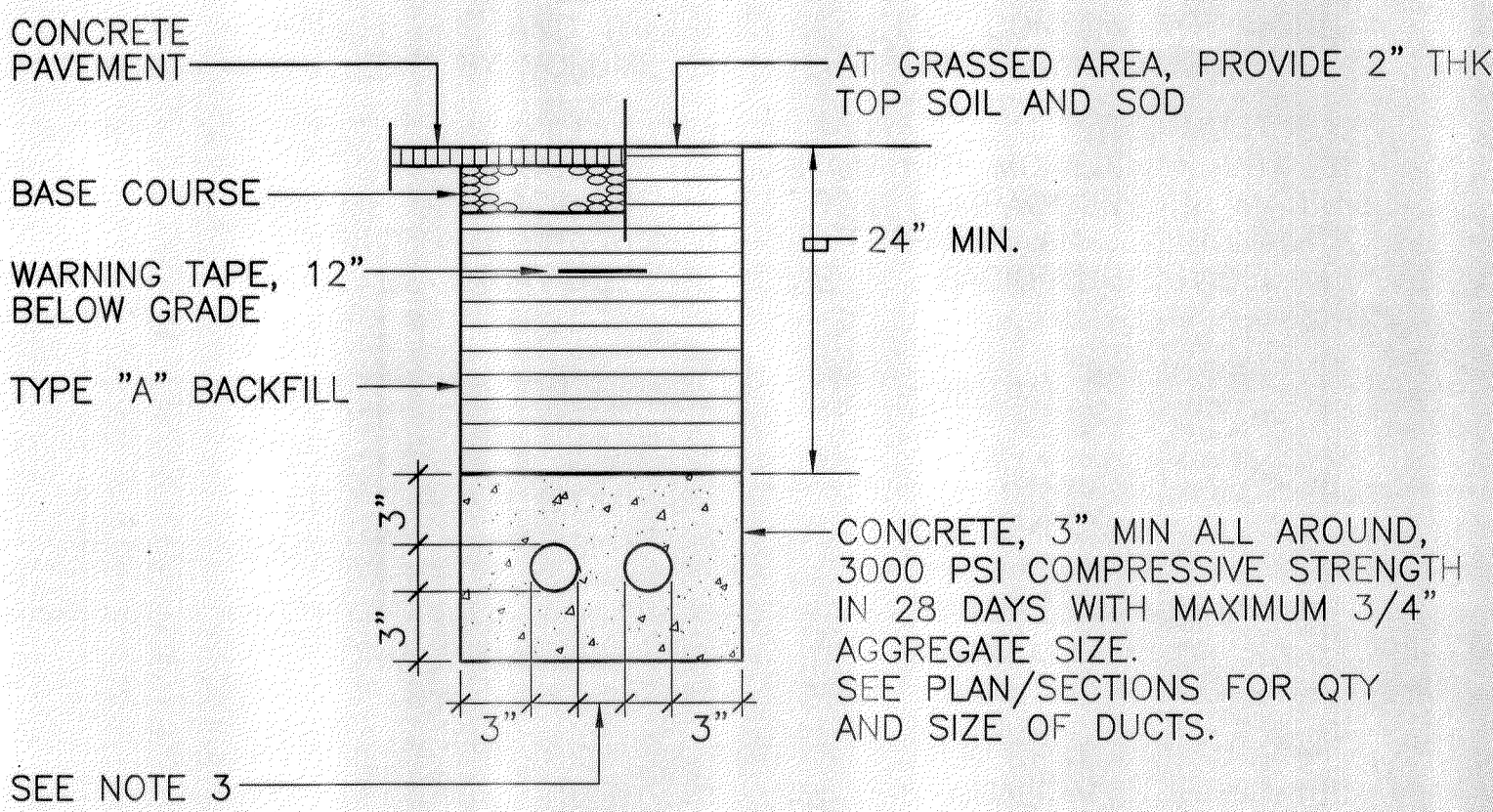


### GENERATOR CONCRETE PAD DETAIL

N.T.S.

#### NOTES:

- VERIFY ALL DIMENSIONS WITH ACTUAL EQUIPMENT SUPPLIER/MANUFACTURER AND ADJUST ALL DIMENSIONS ACCORDINGLY.
- COMPRESSIVE STRENGTH OF CONCRETE SHALL BE MINIMUM 3000 PSI IN 28 DAYS.
- TOP OF CONCRETE PAD TO BE BROOM FINISH, TRUE AND LEVEL. OTHER EXPOSED SURFACES TO BE SMOOTH AND FREE FROM DEFECTS

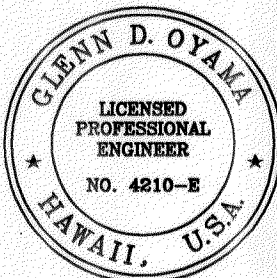


### TYPICAL DUCT SECTION

N.T.S.

#### NOTES

- ALL DUCTS SHALL BE SCHEDULE 40 PVC & PROVIDED WITH A POLYOLEFIN PULL LINE (JET LINE CAT. #232 OR EQUIVALENT).
- BACKFILL DATA**  
TYPE "A" BACKFILL: EARTH AND GRAVEL, MAXIMUM ROCK SIZE SHALL BE 1" AND THE MIXTURE SHALL CONTAIN NOT MORE THAN 50% BY VOLUME OF ROCK PARTICLES, 95% COMPACTION  
TYPE "B" BACKFILL: EARTH AND GRAVEL, MIXTURE MUST PASS A 1/2" MESH SCREEN & CONTAIN NOT MORE THAN 20% BY VOLUME OF ROCK PARTICLES, 95% COMPACTION. IF MATERIAL AT BOTTOM OF TRENCH IS NOT TYPE "B", AN ADDITIONAL 3" SHALL BE EXCAVATED AND TYPE "B" BACKFILL PROVIDED
- DUCT SEPARATION REQUIREMENTS (MINIMUM)**  
ELEC - ELEC 2"  
ELEC - SIGNAL/COMM 3"  
SIGNAL/COMM - SIGNAL/COMM 2"
- PERFORM A MANDREL TEST AFTER DUCTS ARE INSTALLED.
- PAVEMENT AND/OR CONCRETE SIDEWALK RESTORATION SHALL BE EQUAL OR BETTER THAN ORIGINAL IN QUALITY AND THICKNESS.
- WHERE GRASSED AREAS AND PLANTS HAVE BEEN DAMAGED DURING CONSTRUCTION, RESTORE THE AREAS TO AS CLOSE AS THEIR ORIGINAL CONDITION AS PRACTICABLE.
- COMPLY WITH EIA/TIA 569 & UTILITY COMPANY REQUIREMENTS.



THIS WORK WAS PREPARED BY ME OR UNDER MY SUPERVISION

*Glenn D. Oyama*

STATE OF HAWAII  
DEPARTMENT OF TRANSPORTATION  
HIGHWAYS DIVISION  
MISC. DETAILS

MOLOKAI BASEYARD  
MOLOKAI INDUSTRIAL PARK  
Project No. HWY-M-05-98

Scale: As Noted Date: SEPT. 13, 2001

SHEET NO. E4.3 OF E4.3 SHEETS