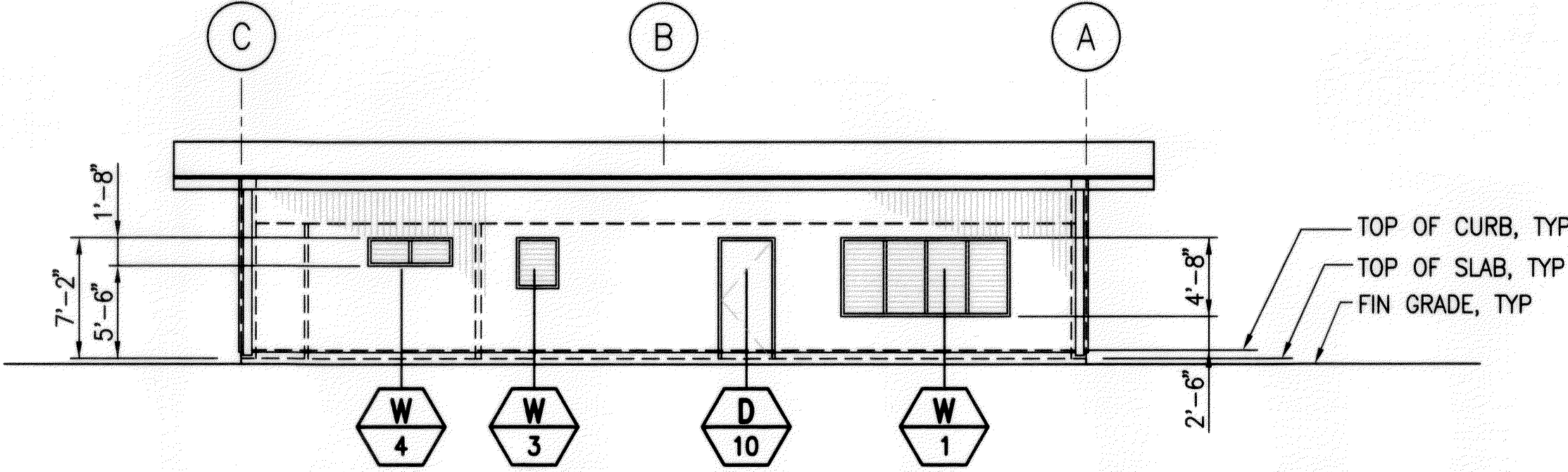
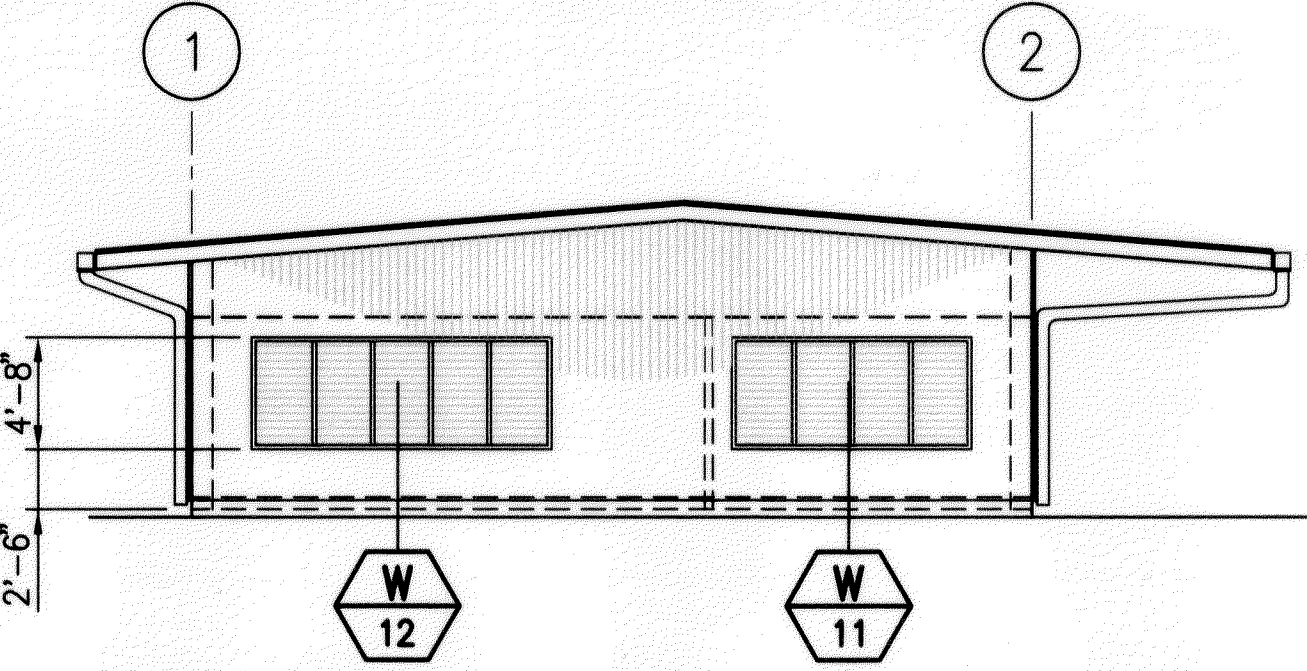


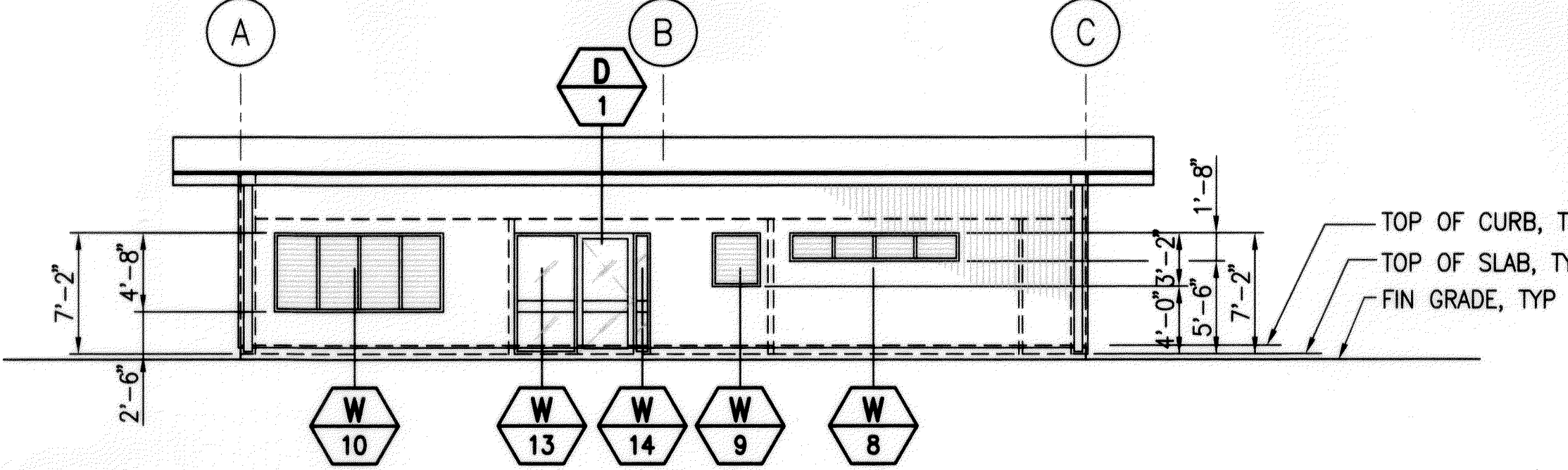
FED. ROAD DIST. NO.	STATE	PROJ. NO.	FISCAL YEAR	SHEET NO.	TOTAL SHEETS
HAWAII	HAW.	HWY-M-05-98	2002	30	99



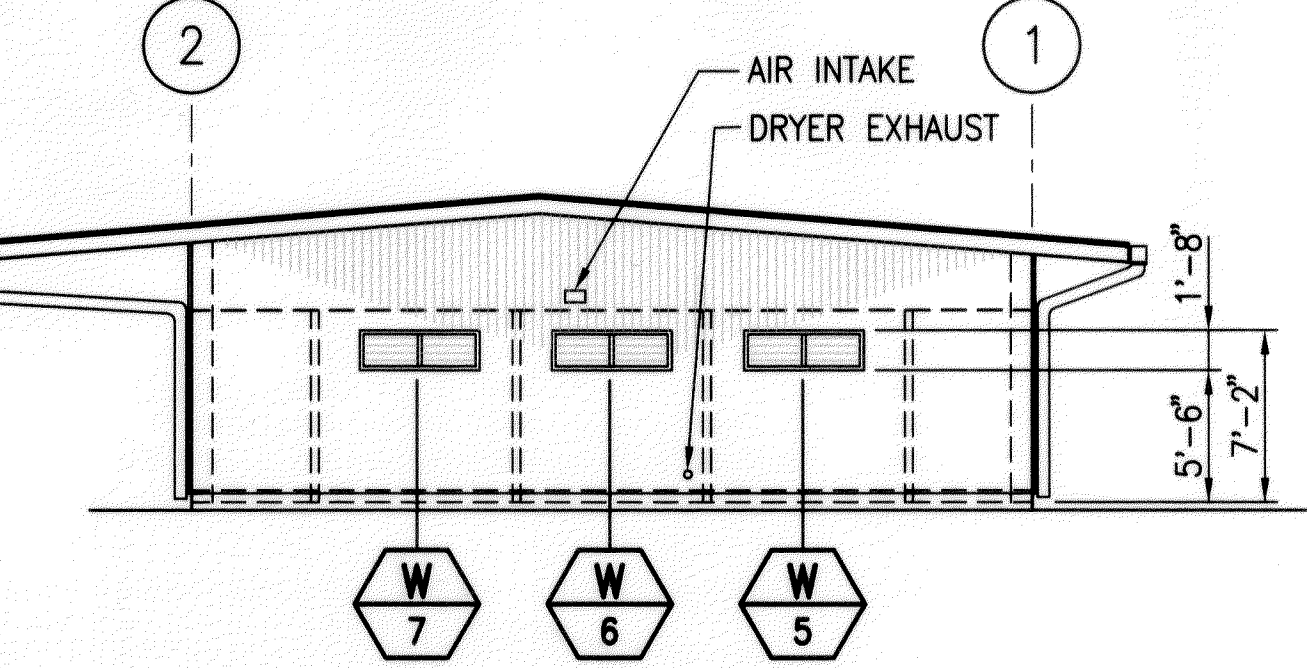
NORTH ELEVATION
SCALE: 1/8"=1'-0"



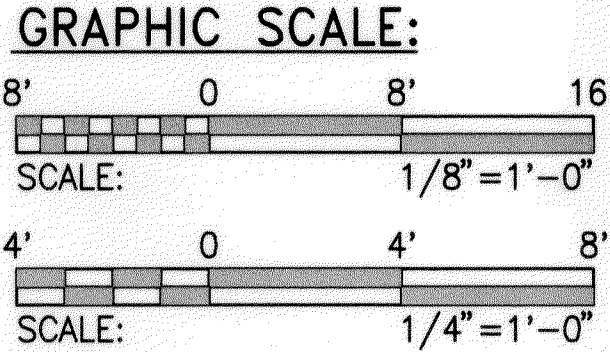
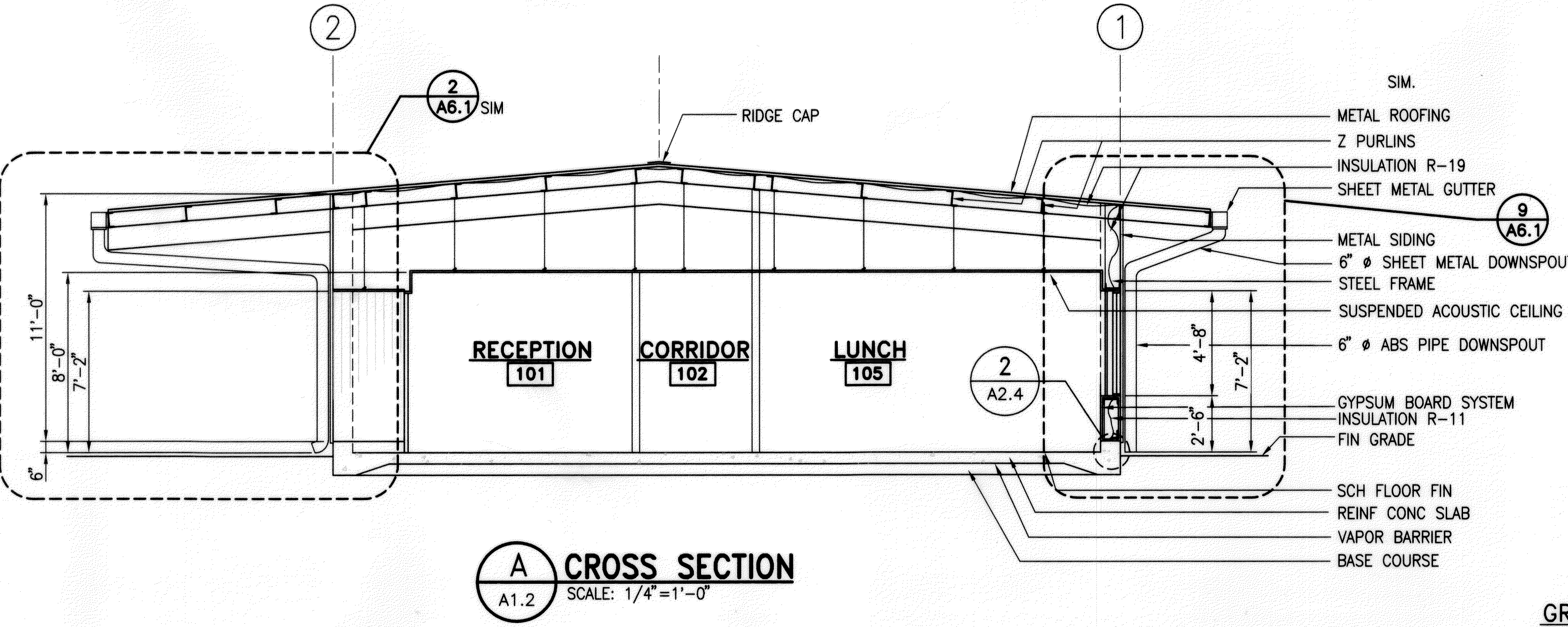
WEST ELEVATION
SCALE: 1/8"=1'-0"



SOUTH ELEVATION
SCALE: 1/8"=1'-0"



EAST ELEVATION
SCALE: 1/8"=1'-0"



THIS WORK WAS PREPARED BY
ME OR UNDER MY SUPERVISION
Walter Leg

OFFICE BUILDING

STATE OF HAWAII
DEPARTMENT OF TRANSPORTATION
HIGHWAYS DIVISION

**EXTERIOR ELEVATIONS
& CROSS SECTION**

MOLOKAI BASEYARD
MOLOKAI INDUSTRIAL PARK
Project No. HWY-M-05-98

Scale: As Noted Date: SEPT. 13, 2001

SHEET No. A1.2 OF A1.4 SHEETS

ORIGINAL PLAN	DATE
DESIGNED BY	
NOTED BY	
QUANTITIES BY	
CHECKED BY	
NO.	

6143A15.DWG 03/23/00 M:\DWG\6143-01\ARCH 09:17