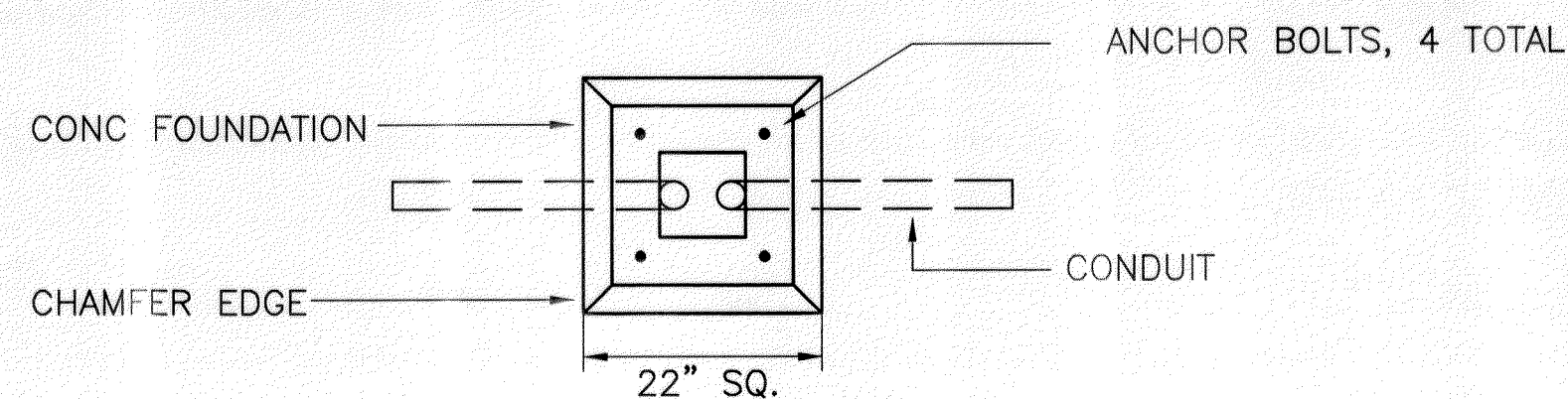
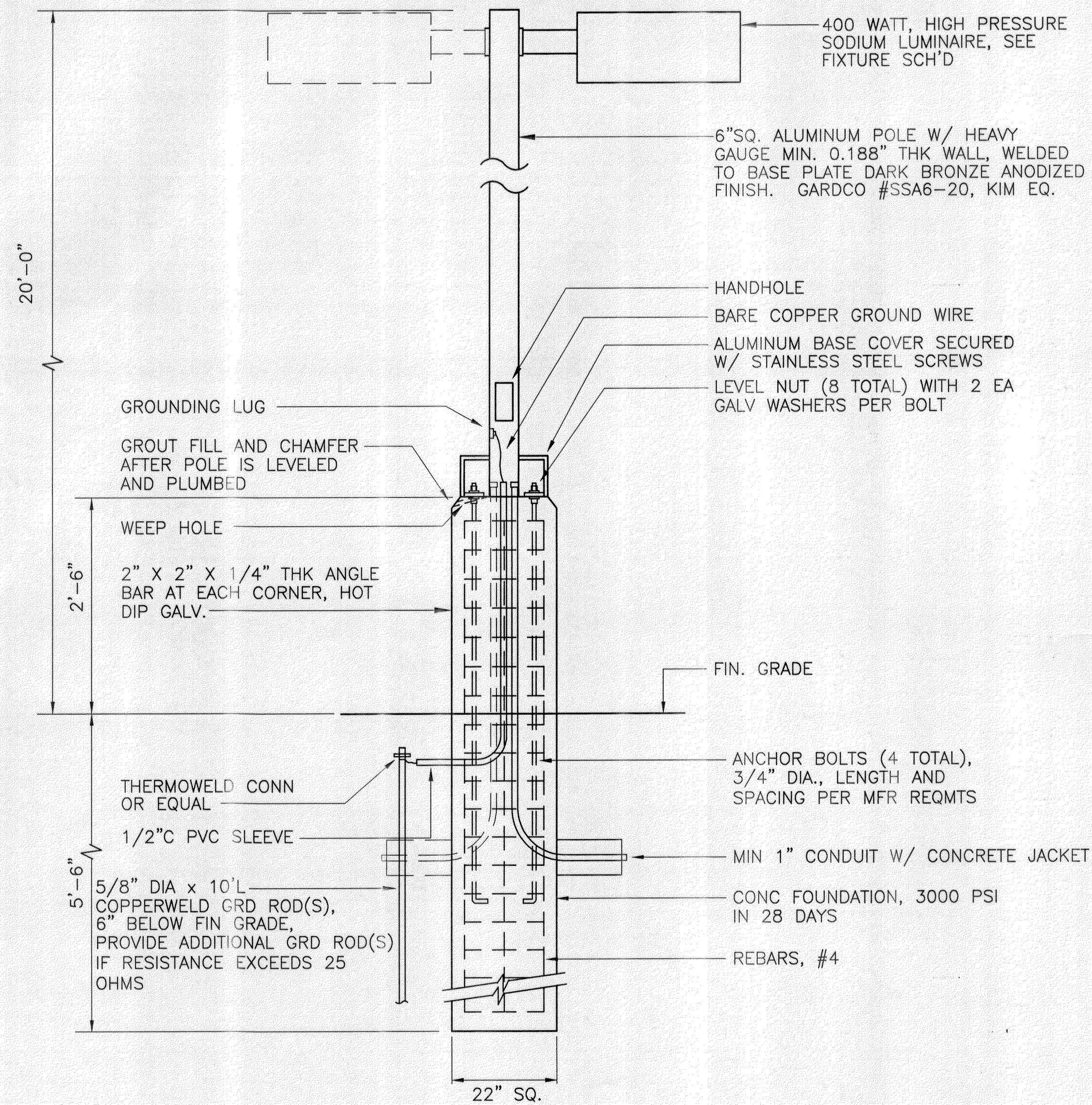


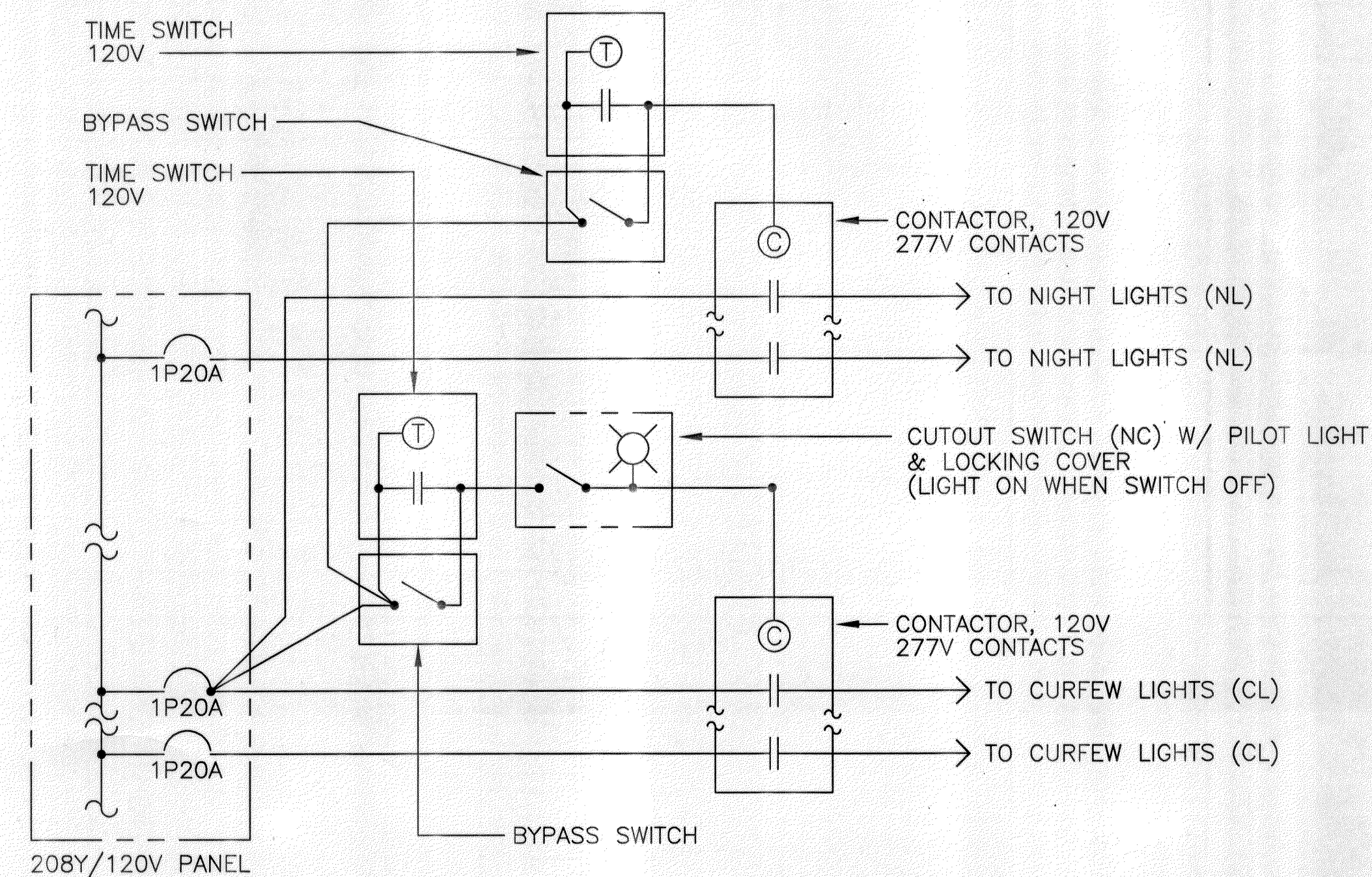
| FED. ROAD DIST. NO. | STATE | PROJ. NO.   | FISCAL YEAR | SHEET NO. | TOTAL SHEETS |
|---------------------|-------|-------------|-------------|-----------|--------------|
| HAWAII              | HAW.  | HWY-M-05-98 | 2002        | 97        | 99           |



### PARKING AREA LIGHT DETAIL

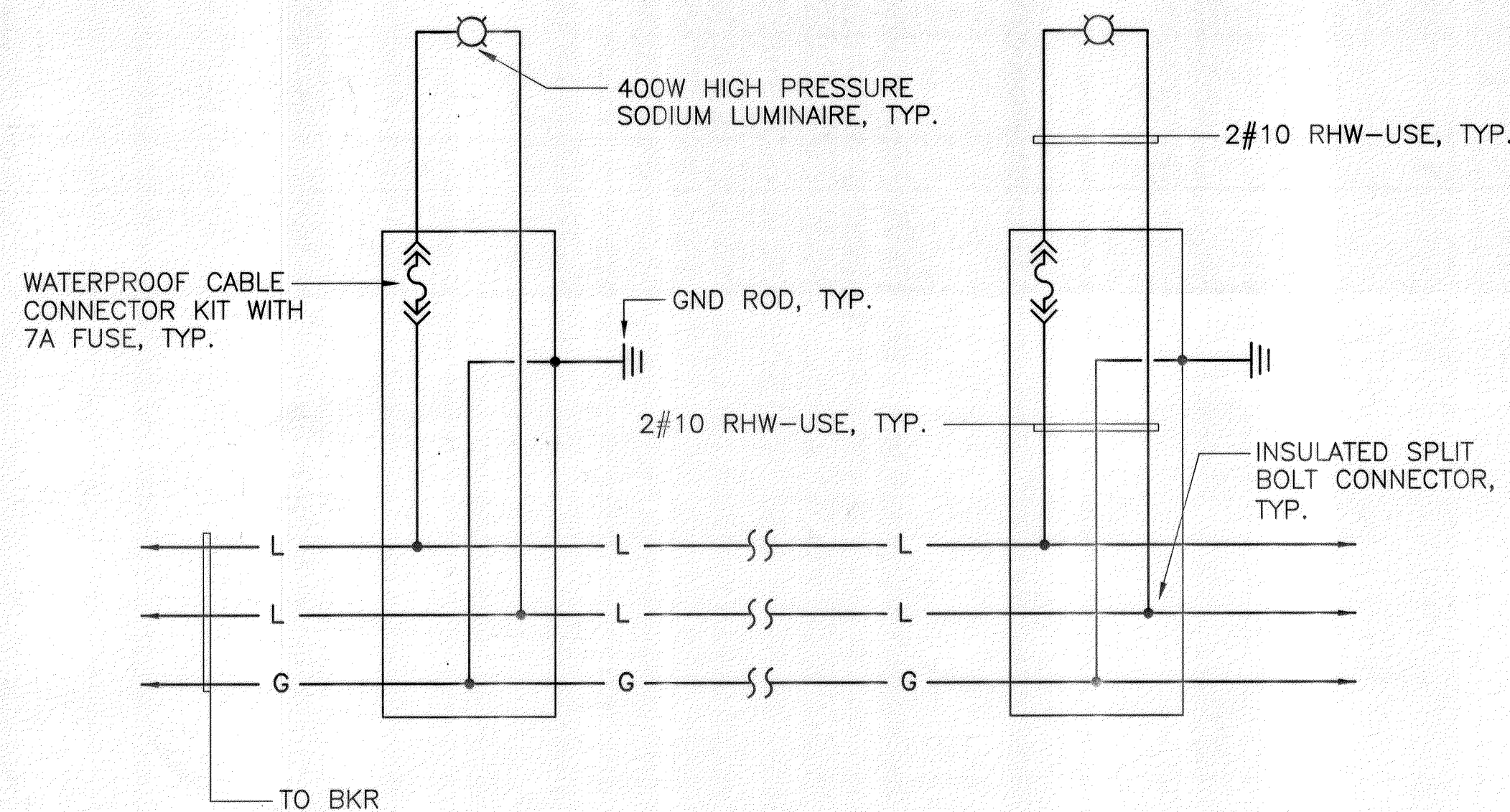
N.T.S.

- NOTES: FOR PARKING/WALKWAY AREA LIGHTS
- POLE ASSEMBLY SHALL WITHSTAND 100MPH WIND VELOCITY WITH 1.3 GUST FACTOR.
  - ILLUMINATION LEVELS SHALL BE AS FOLLOWS:  
DRIVEWAY MIN. 2.5 FC AVG MAINTAINED W/ MAX 4 TO 1 UNIFORMITY  
PARKING MIN. 2.5 FC AVG MAINTAINED W/ MAX 4 TO 1 UNIFORMITY
  - SUBMIT FOOTCANDLE LEVEL PRINTOUT TO SHOW COMPLIANCE W/ ILLUMINATION LEVEL REQMT'S WITH ALL REQUEST FOR SUBSTITUTIONS & SHOP DRAWINGS.

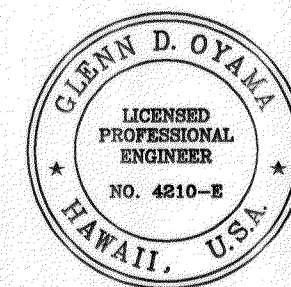


### TYPICAL CONTROL DIAGRAM – CURFEW LIGHTS AND NIGHT LIGHTS

- NOTES:
- PROVIDE CONTACTORS AS REQUIRED TO CONTROL ALL NIGHT LIGHT AND CURFEW LIGHT CIRCUITS.



### TYPICAL WIRING DIAGRAM– DRIVEWAY/PARKING AREA LIGHTING



THIS WORK WAS PREPARED BY  
ME OR UNDER MY SUPERVISION  
*Glenn D. Oyama*

STATE OF HAWAII  
DEPARTMENT OF TRANSPORTATION  
HIGHWAYS DIVISION  
**AREA LIGHT DETAILS AND  
WIRING DIAGRAMS**  
MOLOKAI BASEYARD  
MOLOKAI INDUSTRIAL PARK  
Project No. HWY-M-05-98

Scale: As Noted Date: SEPT. 13, 2001

SHEET NO. E4.1 OF E4.3 SHEETS