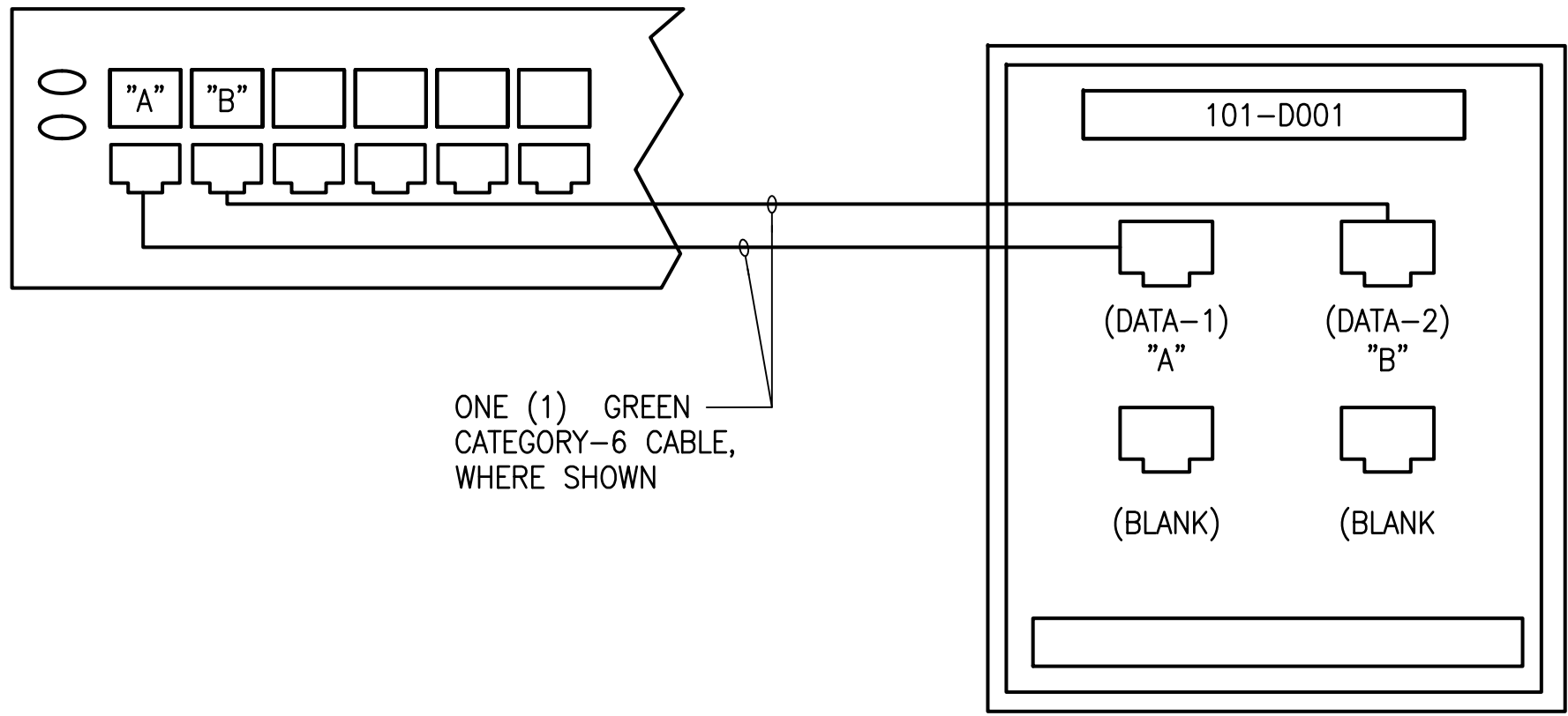


FED. ROAD DIST. NO.	STATE	PROJ. NO.	FISCAL YEAR	SHEET NO.	TOTAL SHEETS
HAWAII	HAW.	HWY-M-ART18-01	2022	72	80

HORIZONTAL TELECOM DISTRIBUTION PATCH PANEL RACK MOUNTED TELECOM EQUIPMENT RACK

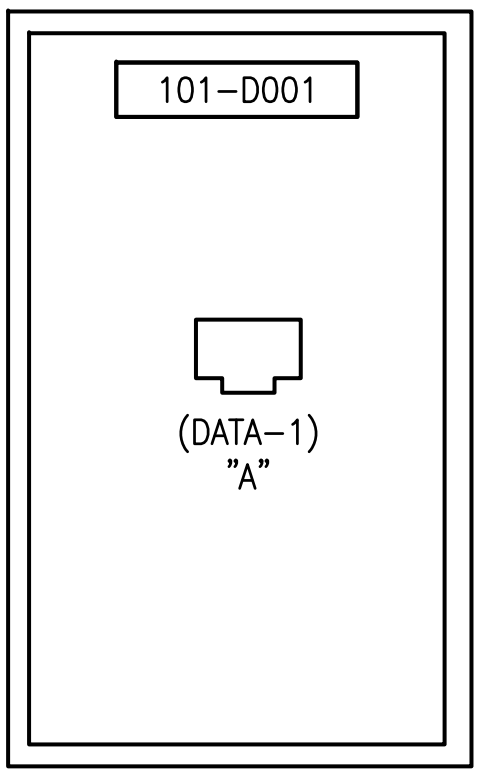


ONE (1) GREEN CATEGORY-6 CABLE, WHERE SHOWN

TYPICAL TELECOMMUNICATIONS OUTLET

1 TYPICAL TELECOMMUNICATIONS OUTLET WIRING DIAGRAM

E15 NOT TO SCALE



2 TYPICAL WIRELESS ACCESS POINT OUTLET

E15 NOT TO SCALE

SAMPLE:

DATA OUTLET IN ROOM 109

109-D005

OUTLET IDENTIFIER: [LOC#]-[SYSTEMID][OUTLET#]

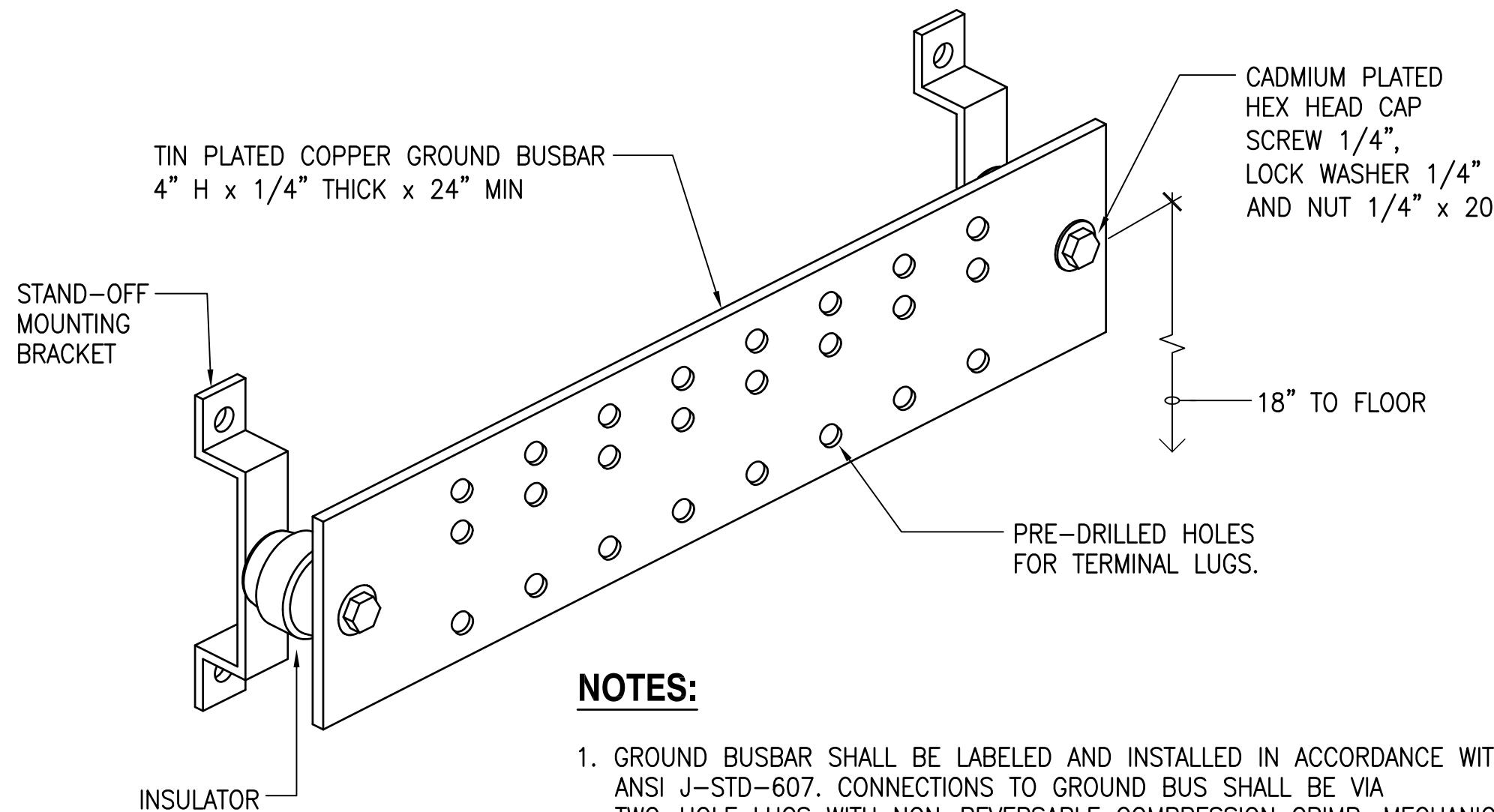
UNIQUE OUTLET INDEX NUMBER PER SYSTEM (001 TO 999)

SYSTEM IDENTIFICATION D - DATA OUTLET

LOCATION OF OUTLET DROP (ROOM NUMBER)

3 TELECOMMUNICATION OUTLET LABELING SCHEME

E15 NOT TO SCALE

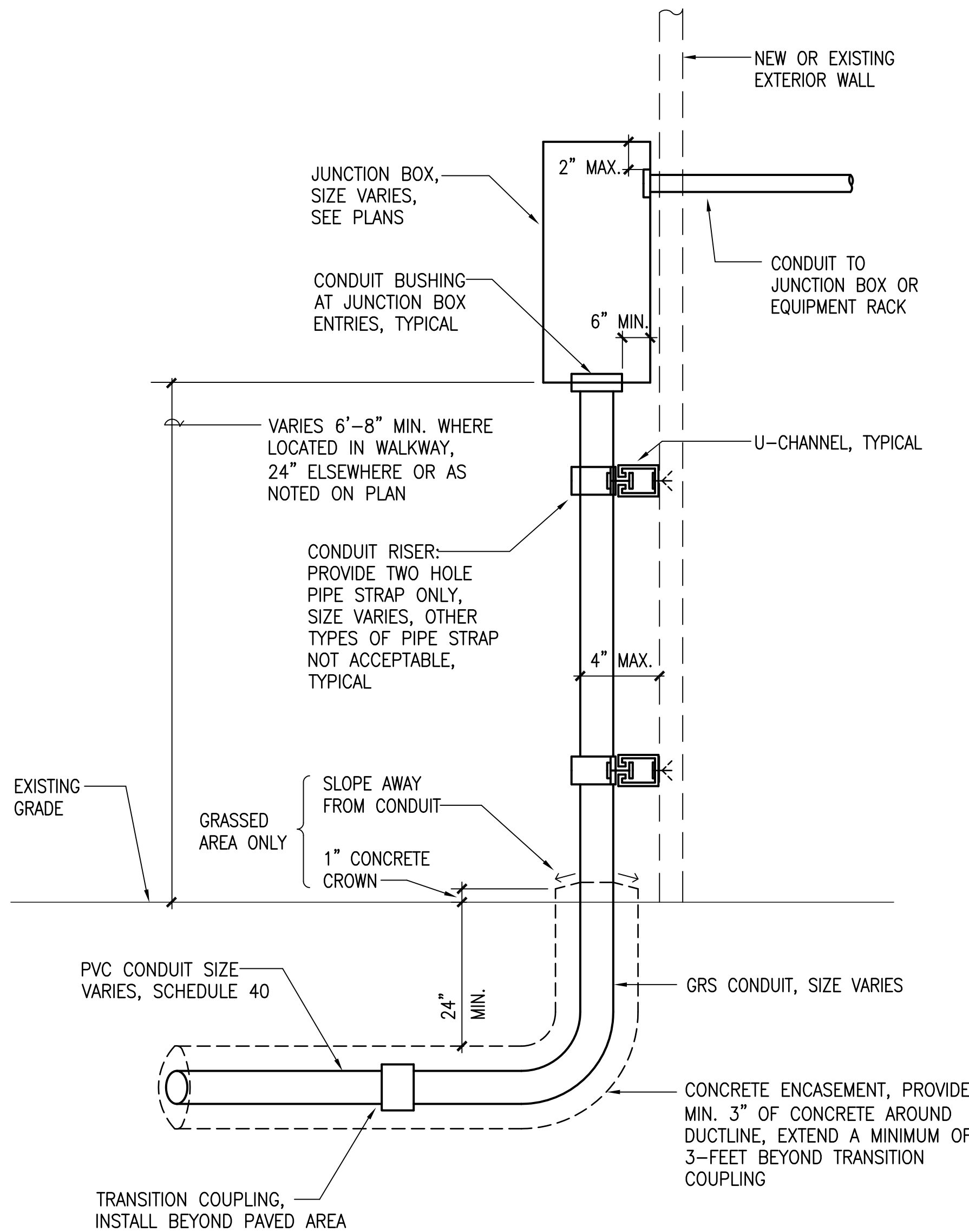


NOTES:

- GROUND BUSBAR SHALL BE LABELED AND INSTALLED IN ACCORDANCE WITH ANSI J-STD-607. CONNECTIONS TO GROUND BUS SHALL BE VIA TWO-HOLE LUGS WITH NON-REVERSABLE COMPRESSION CRIMP. MECHANICAL LUG CONNECTIONS SHALL NOT BE USED.
- PROVIDE #6 COPPER GROUND CONDUCTOR CONNECTION TO BUILDING ELECTRICAL SERVICE GROUND.
- PROVIDE, AT A MINIMUM, A #6 COPPER GROUND CONNECTION TO TELECOM EQUIPMENT RACK.

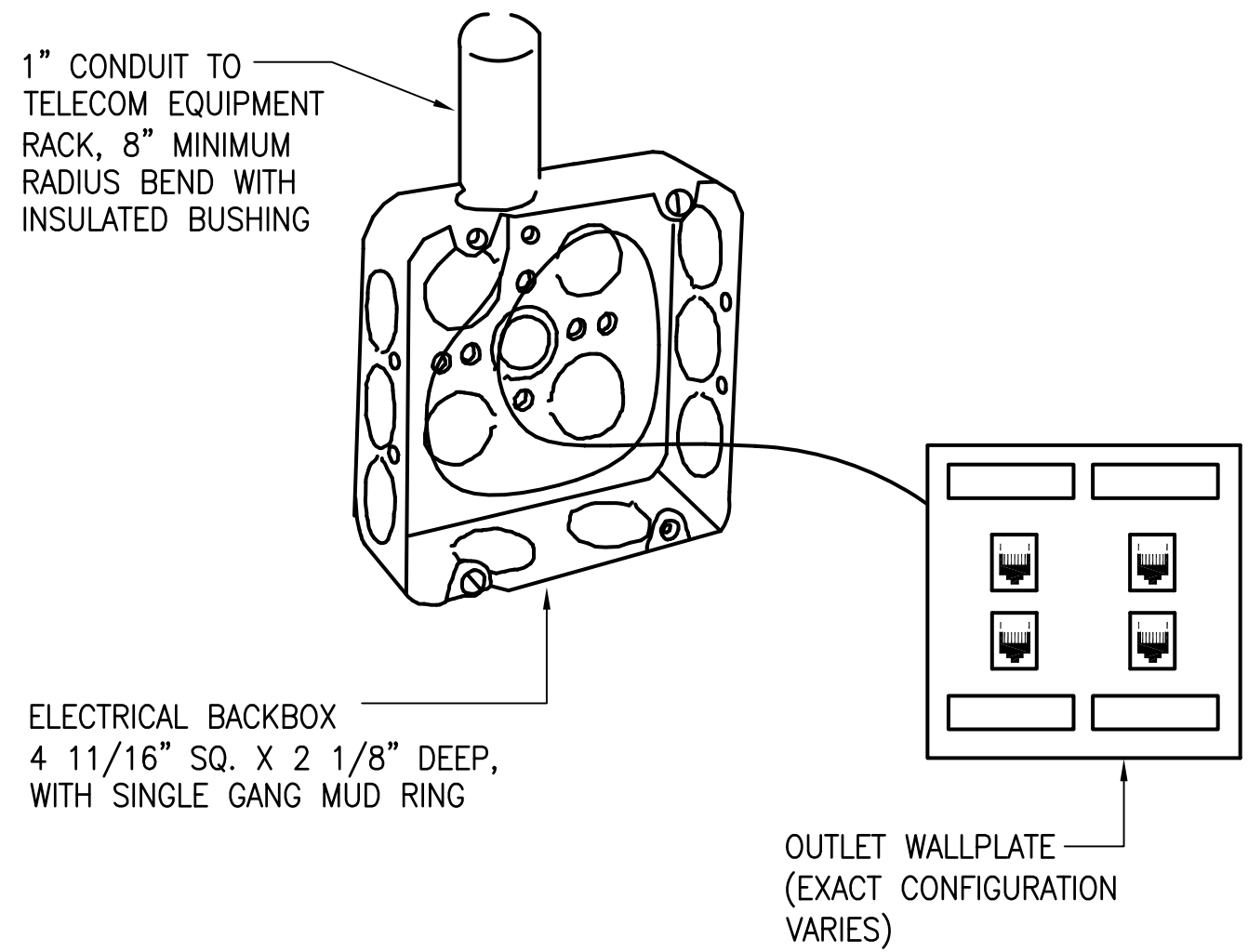
5 TELECOMMUNICATIONS GROUNDING BUSBAR DETAIL

E15 NOT TO SCALE



6 TYPICAL TELECOMMUNICATIONS EXTERIOR JUNCTION BOX

E15 NOT TO SCALE

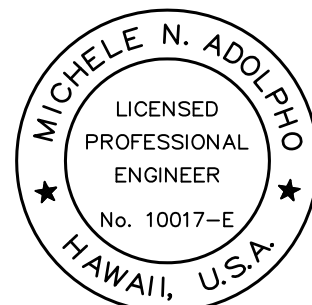


NOTES:

- DO NOT EXCEED CABLE MANUFACTURER'S RECOMMENDED MINIMUM BENDING RADIUS.
- OUTLET BOX SHOWN FOR FLUSH MOUNTED TELECOMMUNICATION OUTLETS. SURFACE MOUNTED OUTLETS SIMILAR.

4 TYPICAL TELECOMMUNICATION OUTLET BOX DETAIL

E15 NOT TO SCALE



PROJECT ENGINEER for ECS, Inc.
APRIL 30, 2024
EXPIRATION DATE OF THE LICENSE

STATE OF HAWAII
DEPARTMENT OF TRANSPORTATION
HIGHWAYS DIVISION

TELECOMMUNICATIONS DETAILS

MAUI DISTRICT BASEYARD
Project No. HWY-M-ART18.01
Scale: AS SHOWN Date: MAY 2022
SHEET No. E15 OF 80 SHEETS