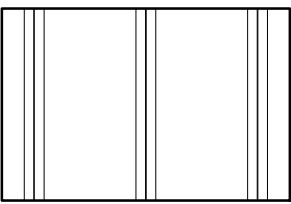


FED. ROAD DIST. NO.	STATE	PROJ. NO.	FISCAL YEAR	SHEET NO.	TOTAL SHEETS
HAWAII	HAW.	HWY-M-ART18-01	2022	24	80

GENERAL NOTES:

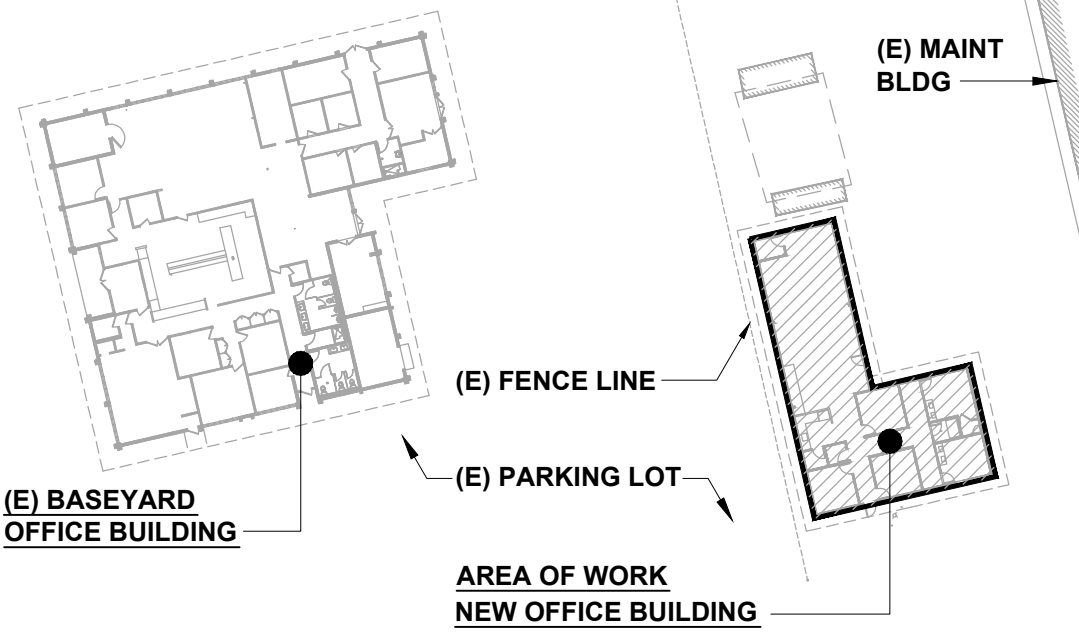
- REFER TO MECHANICAL SHEETS FOR ALL HVAC, PLUMBING ITEMS BUT NOT LIMITED TO HVAC EQUIPMENT, PIPING, VENT PIPING, DUCTING, PIPING SUPPORTS AND CHILL WATER PIPING, AND CONNECTIONS.
- REFER TO ELECTRICAL SHEETS FOR ALL POWER, FIRE ALARM, IT, AND LIGHTING WORK.

LEGEND:



STANDING SEAM METAL ROOF, FACTOR FINISHED.
AVOID DISSIMILAR METALS W/ALL APPURTENANCES,
CLIPS, FASTENERS, AND CONNECTORS / ACCESSORIES.

KEY PLAN:



This work was prepared by me or
under my supervision and construction
of the project will be under my
observation. Expiration date 04/30/24.

STATE OF HAWAII
DEPARTMENT OF TRANSPORTATION
HIGHWAYS DIVISION

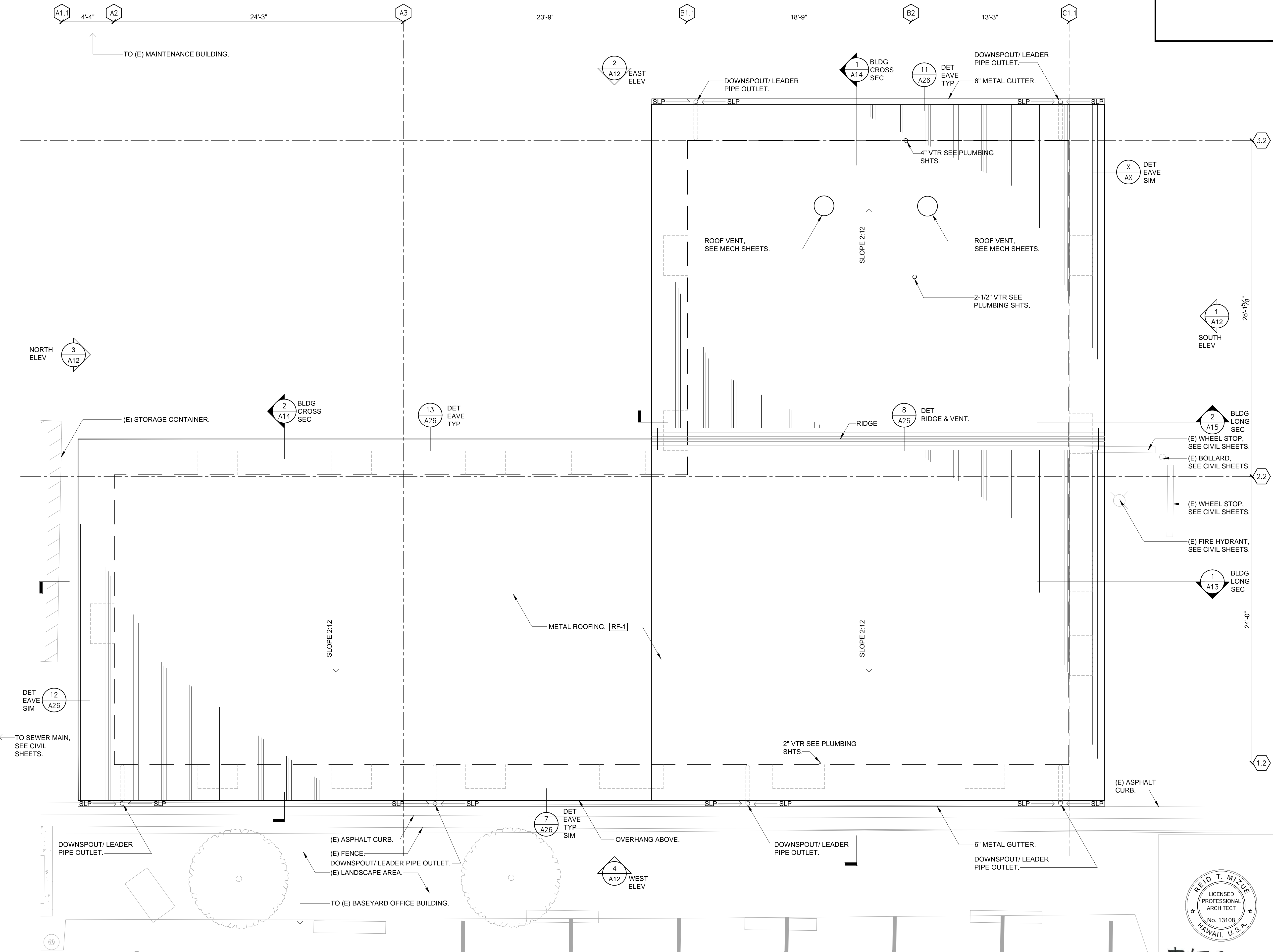
ROOF PLAN NEW OFFICE BUILDING

MAUI DISTRICT BASEYARD
Project No. HWY-M-ART18.01

Scale: AS SHOWN Date: MAY 2022

SHEET No. A10 OF 80 SHEETS

SURVEY PLOTTED BY:	DATE
DRAWN BY:	
DESIGNED BY:	
CHECKED BY:	
NOTED BY:	
NO.	



1 ROOF PLAN - NEW BASEYARD OFFICE BUILDING

SCALE: 1/4" = 1'-0"

