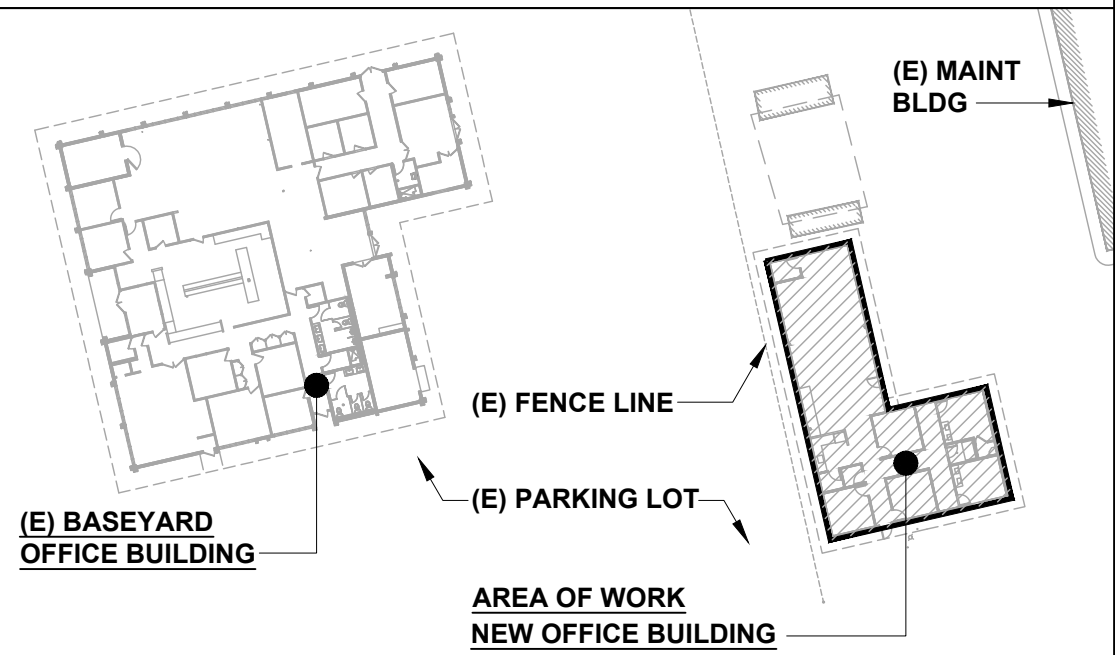


FED. ROAD DIST. NO.	STATE	PROJ. NO.	FISCAL YEAR	SHEET NO.	TOTAL SHEETS
HAWAII	HAW.	HWY-M-ART18-01	2022	27	80

GENERAL NOTES:

1. REFER TO MECHANICAL SHEETS FOR ALL HVAC, PLUMBING SCOPE BUT NOT LIMITED TO HVAC EQUIPMENT, PIPING, DUCTING, PIPING SUPPORTS AND CHILL WATER PIPING, AND CONNECTIONS.
2. REFER TO ELECTRICAL SHEETS FOR ALL POWER, FIRE ALARM, IT, AND LIGHTING WORK.
3. SEE FLOOR PLAN FOR SYSTEMS FURNITURE LAYOUT.

KEY PLAN:



This work was prepared by me or under my supervision and construction of the project will be under my observation. Expiration date 04/30/24.

STATE OF HAWAII
DEPARTMENT OF TRANSPORTATION
HIGHWAYS DIVISION

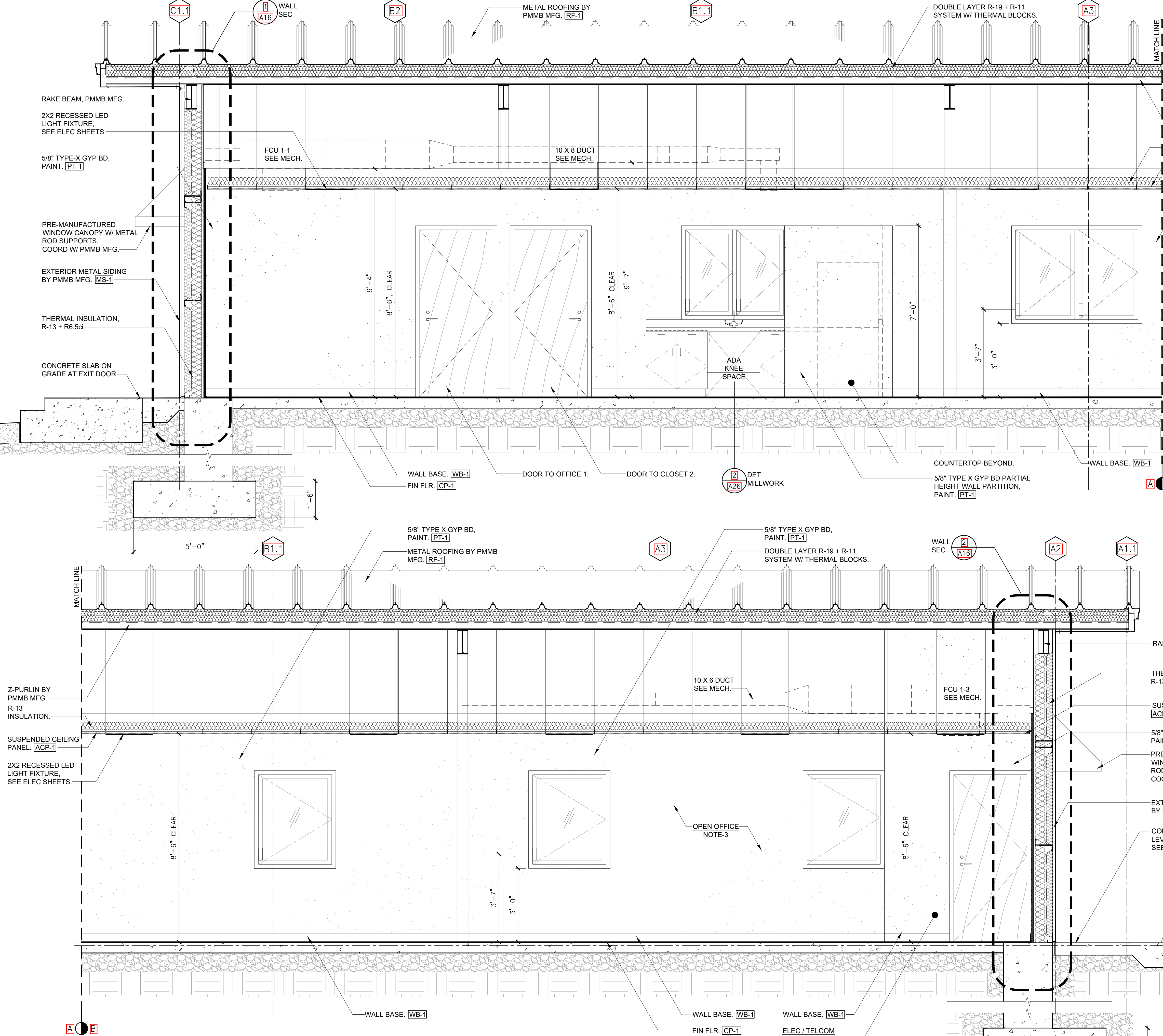
LONGITUDINAL SECTION
NEW OFFICE BUILDING

MAUI DISTRICT BASEYARD
Project No. HWY-M-ART18.01

Scale: AS SHOWN Date: MAY 2022

SHEET No. A13 OF 80 SHEETS

DATE	05/05/24
SURVEY PLOTTED BY	REID T. MIZUE
DRAWN BY	REID T. MIZUE
DESIGNED BY	REID T. MIZUE
CHECKED BY	REID T. MIZUE
NOTED BY	REID T. MIZUE
NS	



1 LONGITUDINAL SECTION - NEW OFFICE BUILDING

SCALE: 1/2" = 1'-0"

