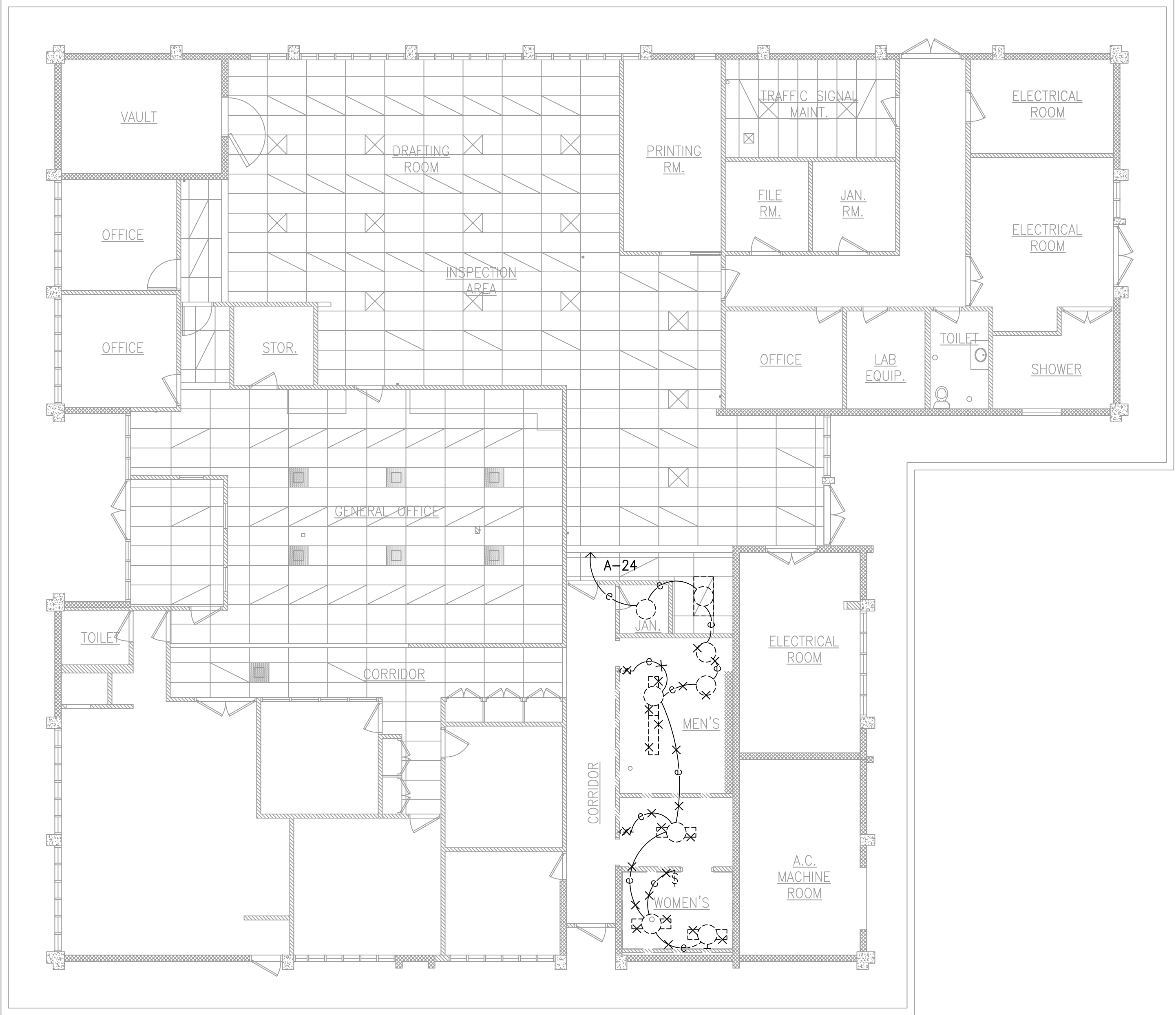


FED. ROAD DIST. NO.	STATE	PROJ. NO.	FISCAL YEAR	SHEET NO.	TOTAL SHEETS
HAWAII	HAW.	HWY-M-ART18-01	2022	61	80

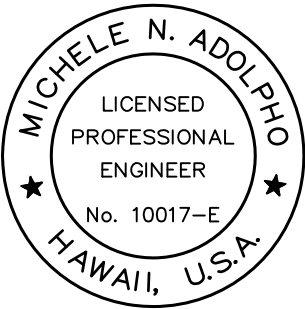
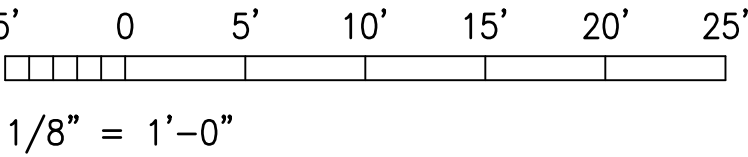


1
E4

**PARTIAL LIGHTING DEMOLITION PLAN -
EXISTING OFFICE BUILDING**

SCALE: 1/8" = 1'-0"

GRAPHIC SCALE



Michele N. Adolpho
PROJECT ENGINEER for ECS, Inc.
APRIL 30, 2024
EXPIRATION DATE OF THE LICENSE

STATE OF HAWAII
DEPARTMENT OF TRANSPORTATION
HIGHWAYS DIVISION

PARTIAL LIGHTING DEMO PLAN - EXISTING
OFFICE BUILDING

MAUI DISTRICT BASEYARD
Project No. HWY-M-ART18.01

Scale: AS SHOWN Date: MAY 2022

SHEET No. E4 OF 80 SHEETS

DESIGNED BY	DATE
DRAWN BY	
CHECKED BY	
IN CHARGE BY	
APPROVED BY	
DATE	