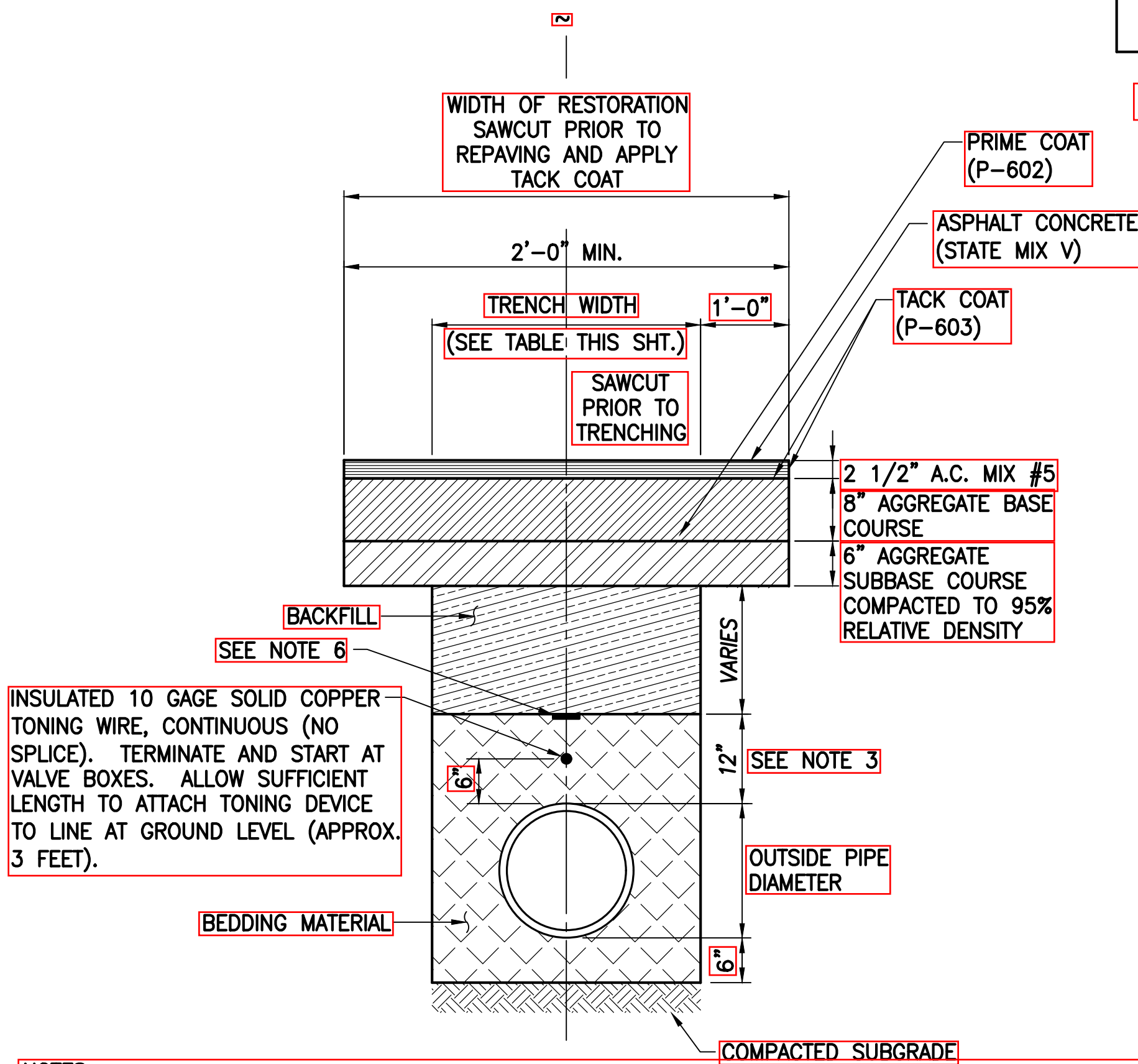


FED. ROAD DIST. NO.	STATE	PROJ. NO.	FISCAL YEAR	SHEET NO.	TOTAL SHEETS
HAWAII	HAW.	HWY-M-ART18-01	2022	13	80

PIPE SIZE	TRENCH WIDTH	
	WATER	SEWER
1 1/2", 2 1/2", 4"	2'-0"	2'-0"

TYPICAL TRENCH WIDTHS



NOTES:

- SUBBASE UNDER CURB & GUTTER SHALL MATCH EXISTING THICKNESS AND QUALITY.
- PAVEMENT STRUCTURE SHALL BE EQUAL OR BETTER THAN EXISTING IN THICKNESS AND QUALITY.
- THE PIPE CUSHION SHALL EXTEND 12 INCHES ABOVE THE PIPE OR TO 12 INCHES ABOVE THE WATER TABLE, WHICHEVER RESULTS IN A GREATER THICKNESS.
- BEDDING MATERIAL SHALL BE OPEN-GRADED GRAVEL (ASTM C33, NO. 67 GRADATION)
- SOFT OR LOOSE SOILS ENCOUNTERED AT THE BOTTOM OF TRENCHES SHALL BE OVER-EXCAVATED TO EXPOSE FIRM NATURAL MATERIAL OR TO A MAXIMUM OF 24 INCHES AND BACKFILLED WITH NO. 2 OR NO. 3B FINE GRAVEL THAT IS ENCAPSULATED WITH GEOTECHNICAL PERMEABLE SEPARATOR. THIS MATERIAL SHALL BE CONSIDERED AS ADDITIONAL TO THE RECOMMENDED SIX (6) INCHES BELOW THE PIPE.
- INSTALL 4 MIL. THICK, NON-METALLIC, 6" WIDE WARNING TAPE OVER CENTERLINE OF THE PIPE AND BELOW THE BASE COURSE ALONG THE ENTIRE LENGTH OF TRENCH. PAYMENT FOR THE FURNISHING AND INSTALLATION OF THE WARNING TAPE SHALL BE INCIDENTAL TO THE UNIT PRICE BID FOR THE PIPE. TAPE SHOULD BE COLORED GREEN AND MARKED WITH "CAUTION BURIED SEWER LINE."

TRENCH RESTORATION DETAIL FOR SEWER

NOT TO SCALE

BACKFILL
SEE NOTE 5
INSULATED 10 GAGE SOLID COPPER TONING WIRE, CONTINUOUS (NO SPLICE). TERMINATE AND START AT VALVE BOXES. ALLOW SUFFICIENT LENGTH TO ATTACH TONING DEVICE TO LINE AT GROUND LEVEL (APPROX. 3 FEET).

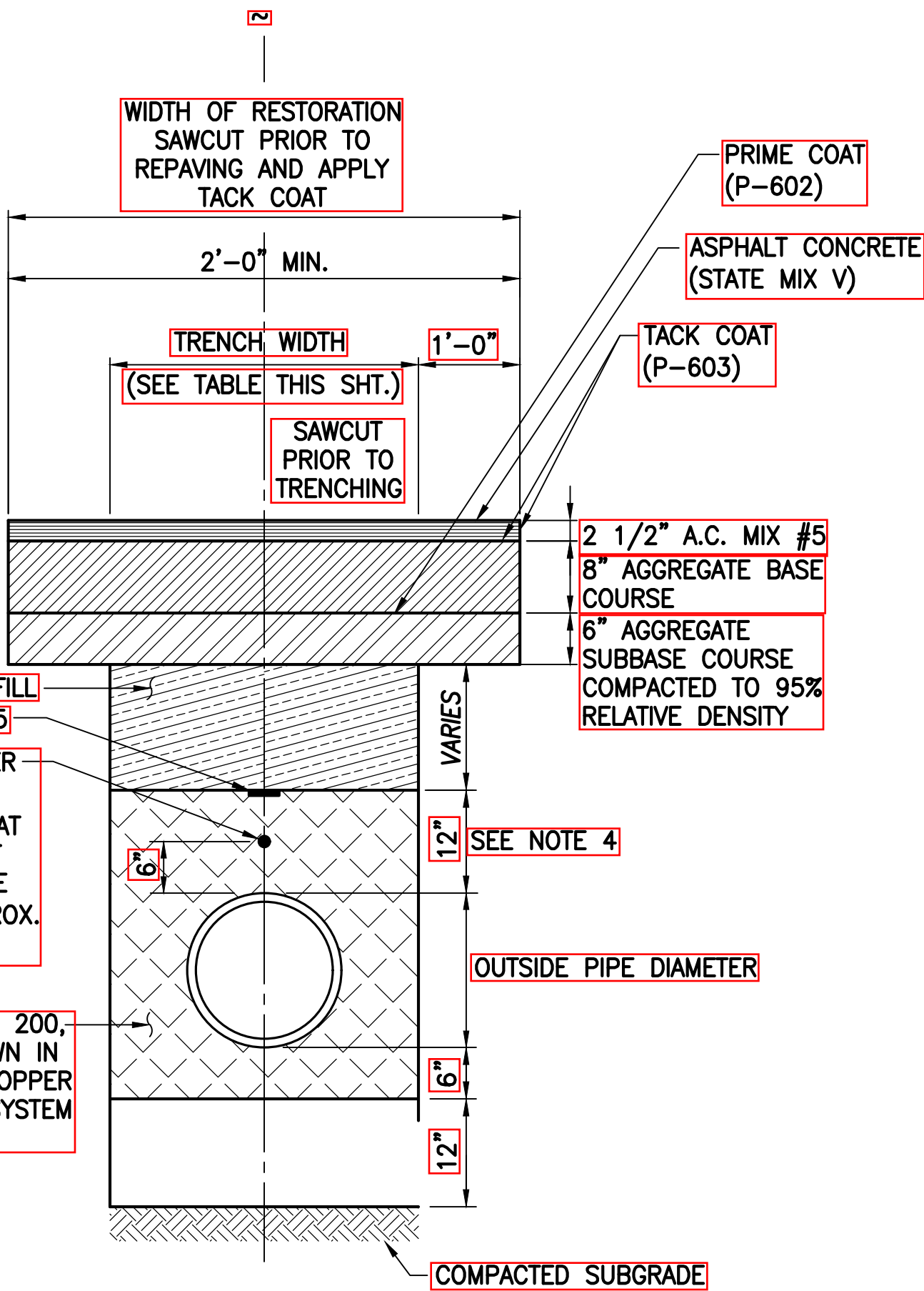
COMPACTED PIPE CUSHION DIVISION 200, SECTION 209.1 TO 209.3, AS SHOWN IN TABLE 200-12 PAGE 209.2 FOR COPPER SERVICE LATERALS IN THE WATER SYSTEM STANDARDS DATED 2002

NOTES:

- SEE TABLE 300-1, PAGE 302.3, WATER SYSTEM STANDARDS DATED 2002.
- LOCAL MATERIAL MAY BE USED OUTSIDE SHOULDER AREA.
- SEE TABLE 100-3, PAGE 102.4, WATER SYSTEM STANDARDS DATED 2002.
- THE PIPE CUSHION SHALL EXTEND 12 INCHES ABOVE THE PIPE OR TO 12 INCHES ABOVE THE WATER TABLE, WHICHEVER RESULTS IN A GREATER THICKNESS.
- INSTALL 4 MIL. THICK, NON-METALLIC, 6" WIDE WARNING TAPE OVER CENTERLINE OF THE PIPE AND BELOW THE BASE COURSE ALONG THE ENTIRE LENGTH OF TRENCH. PAYMENT FOR THE FURNISHING AND INSTALLATION OF THE WARNING TAPE SHALL BE INCIDENTAL TO THE UNIT PRICE BID FOR THE PIPE. TAPE SHOULD BE BLUE COLORED AND MARKED WITH "CAUTION BURIED WATER LINE BELOW".

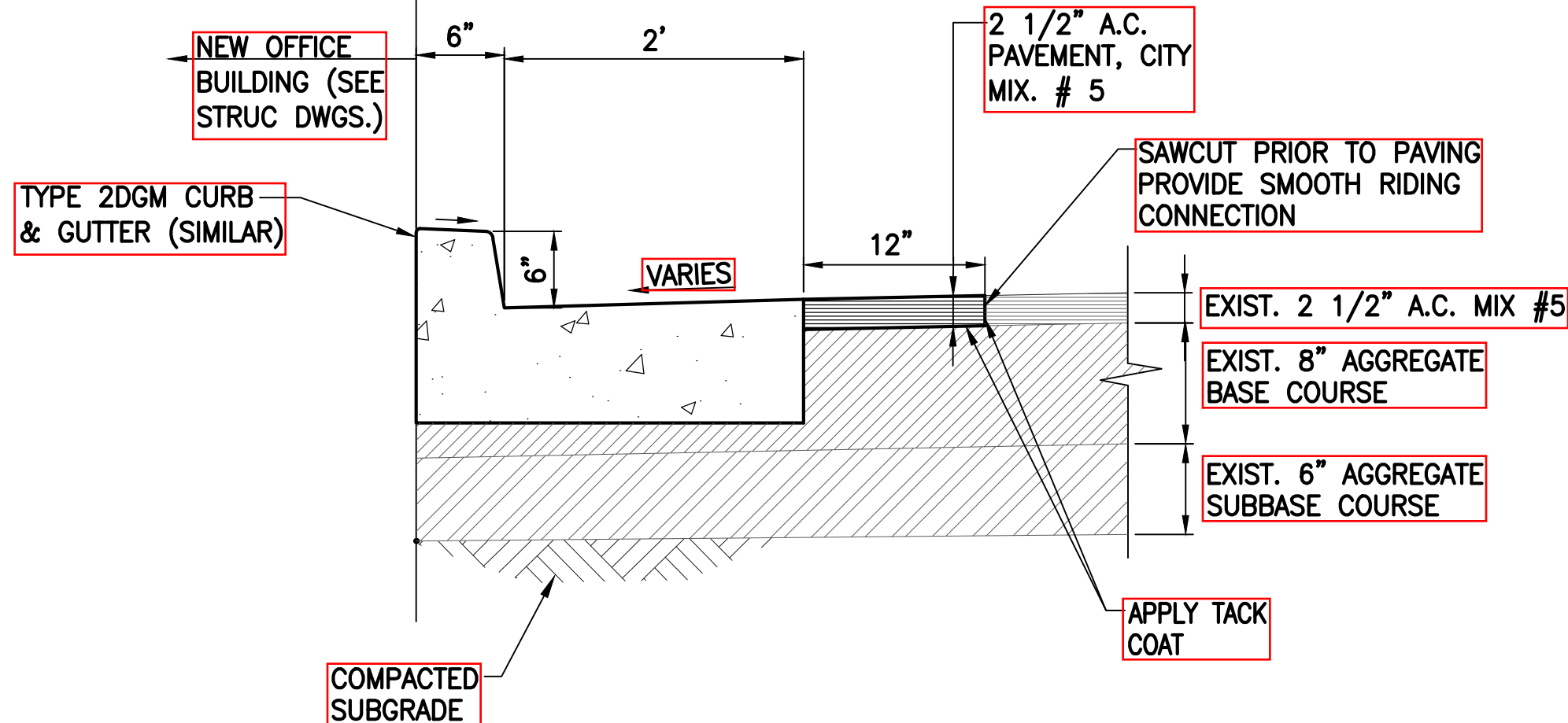
TRENCH RESTORATION DETAIL FOR WATER

NOT TO SCALE



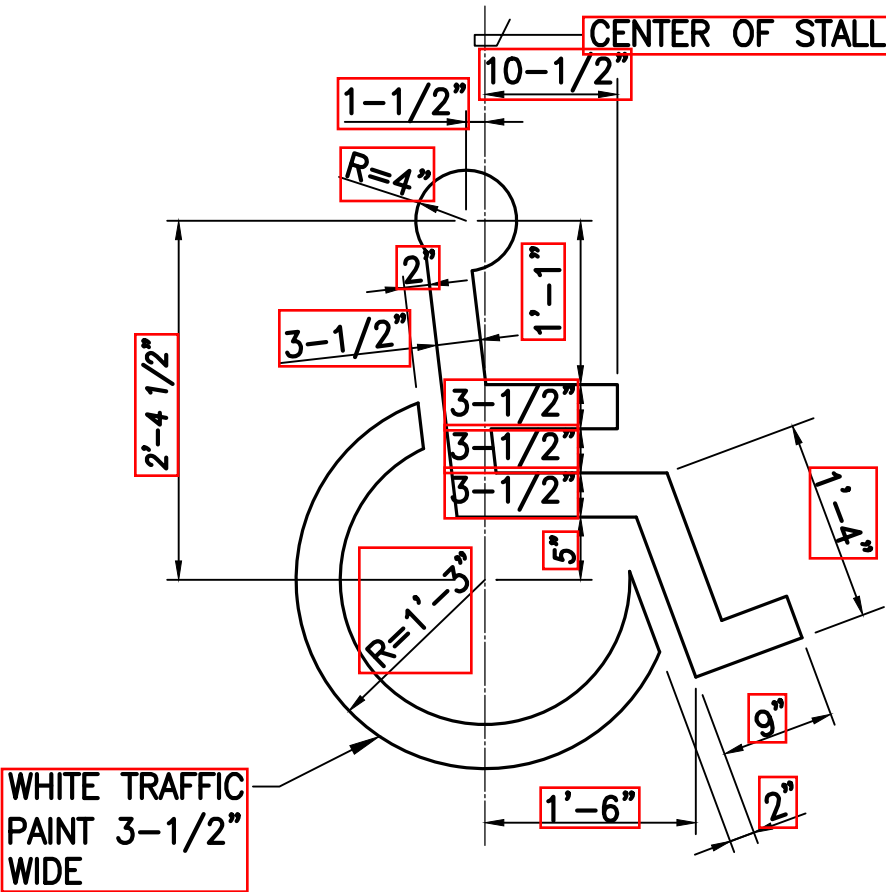
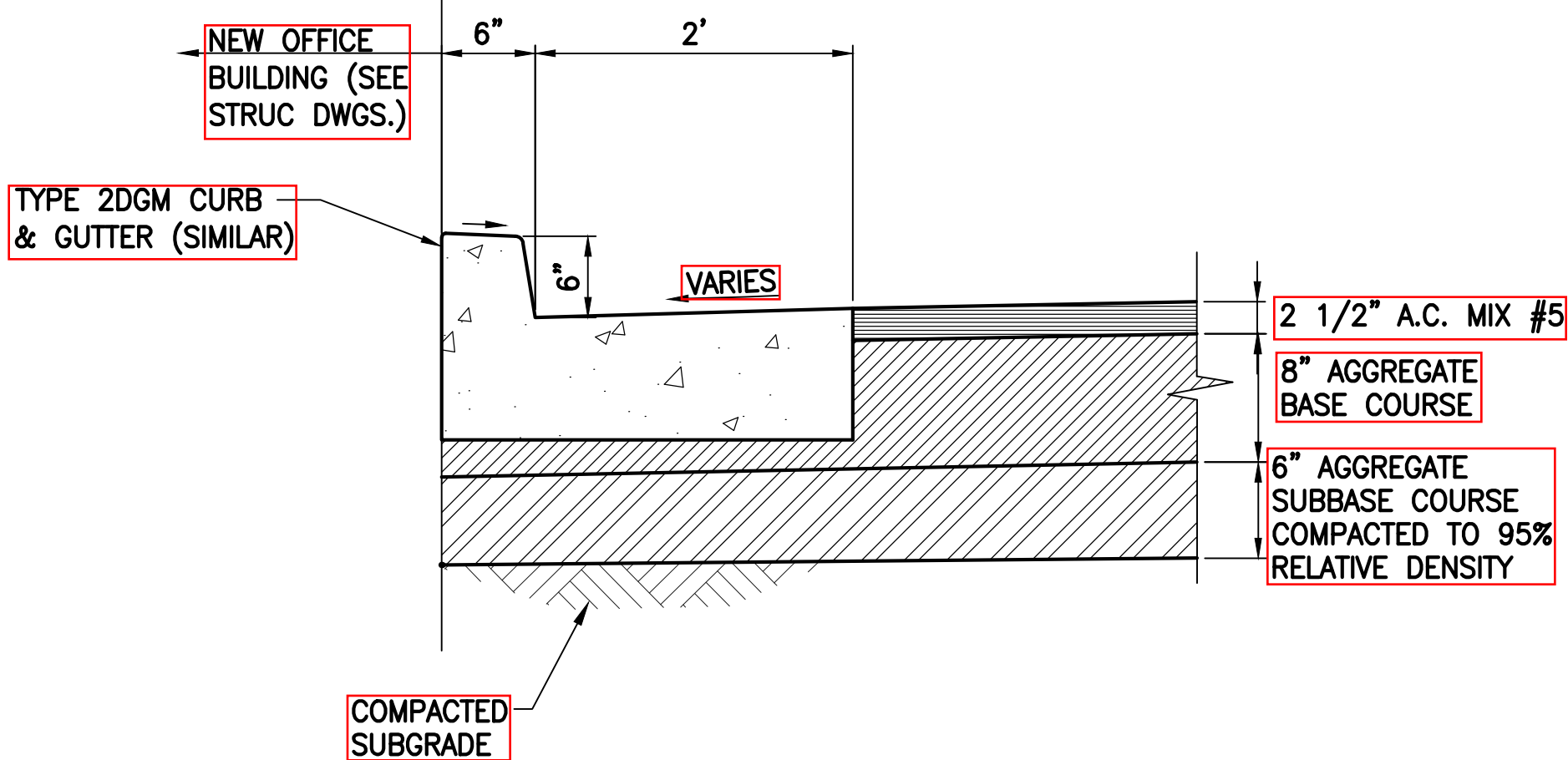
CONNECTION CURB & GUTTER TO EXISTING PAV'T DETAIL

NOT TO SCALE



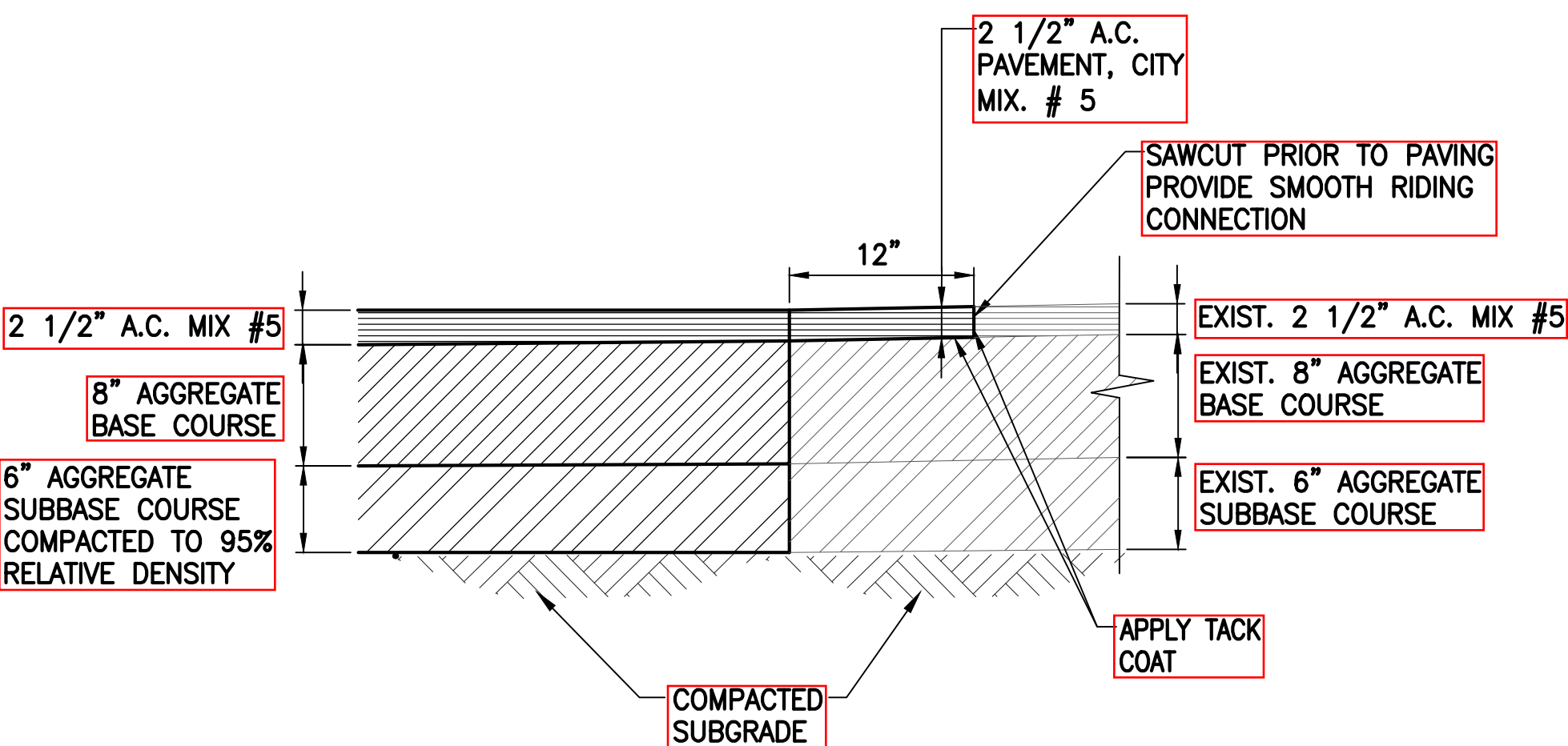
CONNECTION CURB & GUTTER TO NEW PAV'T DETAIL

NOT TO SCALE



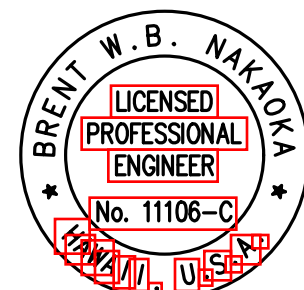
ACCESSIBLE PARKING STALL LOGO

NOT TO SCALE



NEW PAVEMENT CONNECTION DETAIL

NOT TO SCALE



MAUI DISTRICT BASEYARD
Project No. HWY-M-ART18.01
Scale: AS SHOWN Date: MAY 2022
SHEET No. C10 OF 80 SHEETS

STATE OF HAWAII
DEPARTMENT OF TRANSPORTATION
HIGHWAYS DIVISION

DETAILS

MAUI DISTRICT BASEYARD
Project No. HWY-M-ART18.01

Scale: AS SHOWN Date: MAY 2022

SHEET No. C10 OF 80 SHEETS

DATE	10/10/2022
DESIGNED BY	BRAD ALE
CHECKED BY	BRAD ALE
IN CHARGE	BRAD ALE
PROJECT NO.	HWY-M-ART18.01
SHEET NO.	C10 OF 80