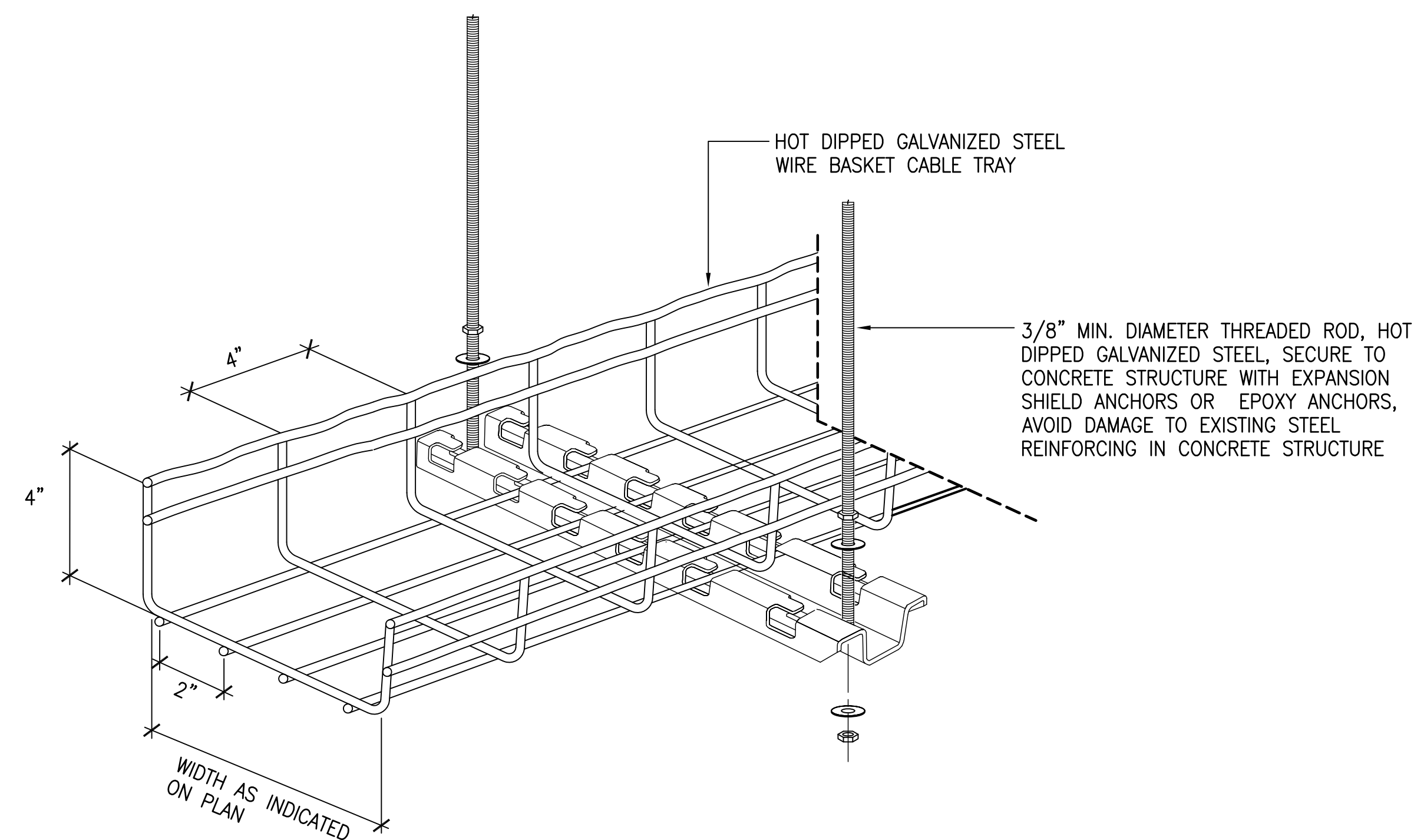
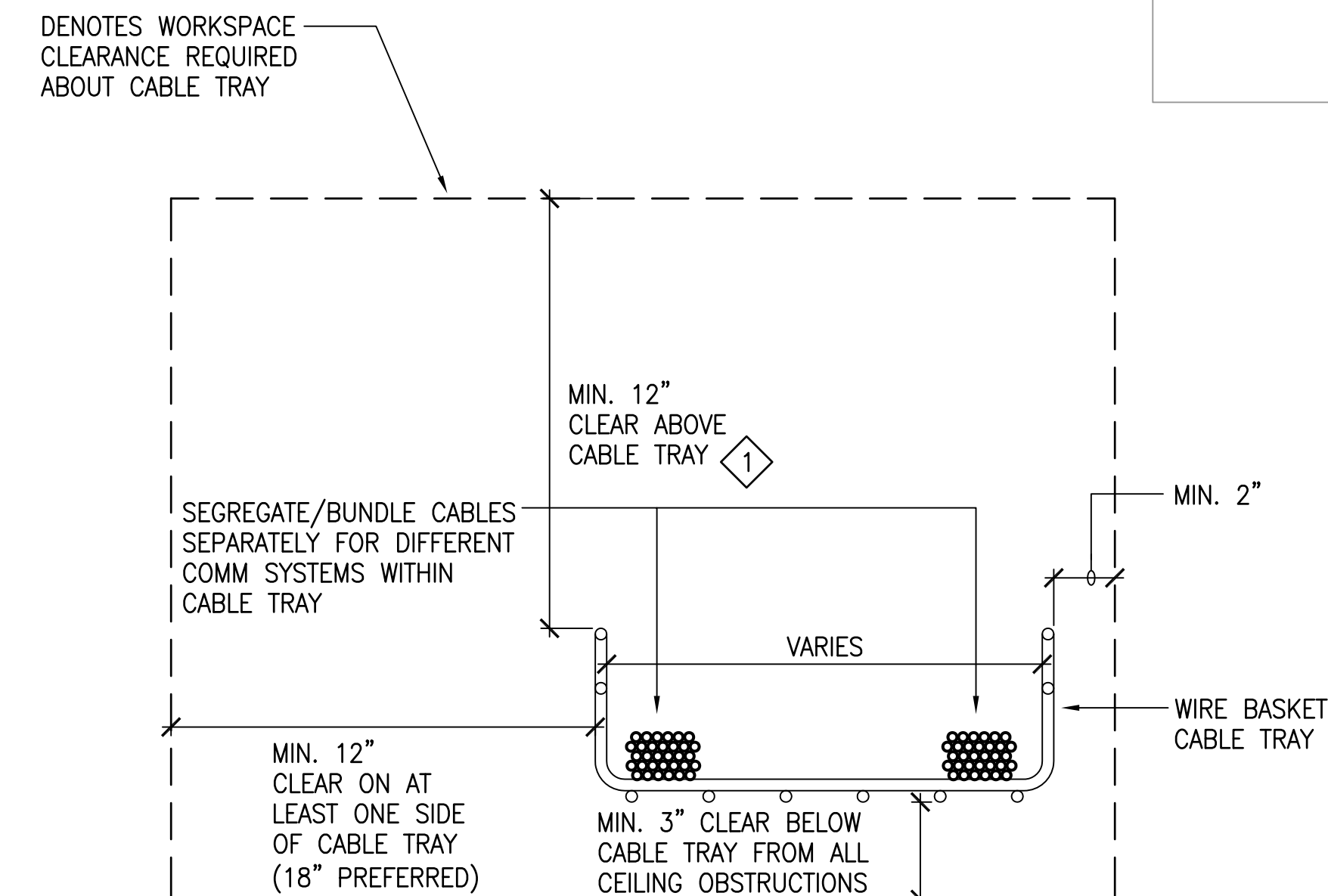


FED. ROAD DIST. NO.	STATE	PROJ. NO.	FISCAL YEAR	SHEET NO.	TOTAL SHEETS
HAWAII	HAW.	HWY-M-ART18-01	2022	73	80



# 1 CEILING SUSPENDED WIRE BASKET TRAY SUPPORT



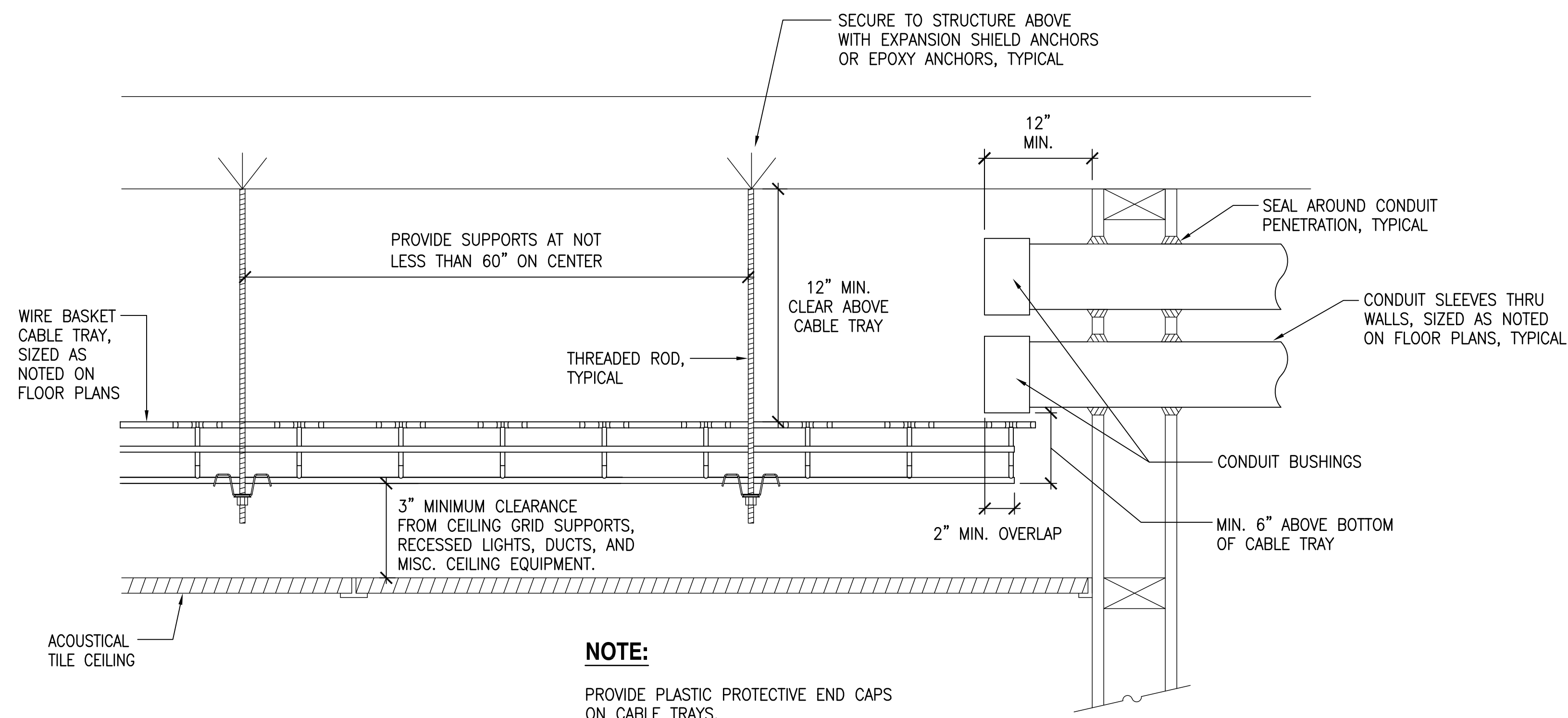
**NOTE:**

1 MINIMUM WORKSPACE CLEARANCE CAN BE REDUCED TO 6-INCHES MIN. AT SELECTED LOCATIONS TO ALLOW FOR UTILITY CROSSINGS SO LONG AS THE WIDTH OF THE UTILITY CROSSINGS ARE MINIMIZED AND ARE NO LONGER THAN 4-FEET IN LENGTH.

### 3 WIRE BASKET TRAY WORKSPACE CLEARANCES

**NOTE:**

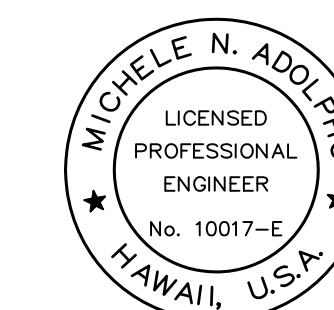
PROVIDE NO. 2 AWG BARE COPPER WIRE THROUGHOUT THE CABLE TRAY/CABLE RUNWAY SYSTEM AND BOND TO EACH SECTION. ADJACENT CABLE TRAY/CABLE RUNWAY SECTIONS SHALL BE BONDED TOGETHER BY CONNECTOR PLATES OF AN IDENTICAL TYPE AS THE CABLE TRAY SECTIONS.



**NOTE:**

PROVIDE PLASTIC PROTECTIVE END CAPS  
ON CABLE TRAYS.

**2** **CABLE TRAY/CONDUIT WALL PENETRATION**  
E16 NOT TO SCALE



*Michael A. D.*  
PROJECT ENGINEER for ECS, Inc.  
APRIL 30, 2024  
EXPIRATION DATE OF THE LICENSE

**STATE OF HAWAII  
DEPARTMENT OF TRANSPORTATION  
HIGHWAYS DIVISION**

### CABLE TRAY DETAILS

MAUI DISTRICT BASEYARD  
Project No. HWY-M-ART18.01

Scale: AS SHOWN	Date: MAY 2022
-----------------	----------------

SHEET No. E16 OF 80 SHEETS