

FED. ROAD DIST. NO.	STATE	PROJ. NO.	FISCAL YEAR	SHEET NO.	TOTAL SHEETS
HAWAII	HAW.	583A-01-18M	2019	10	19

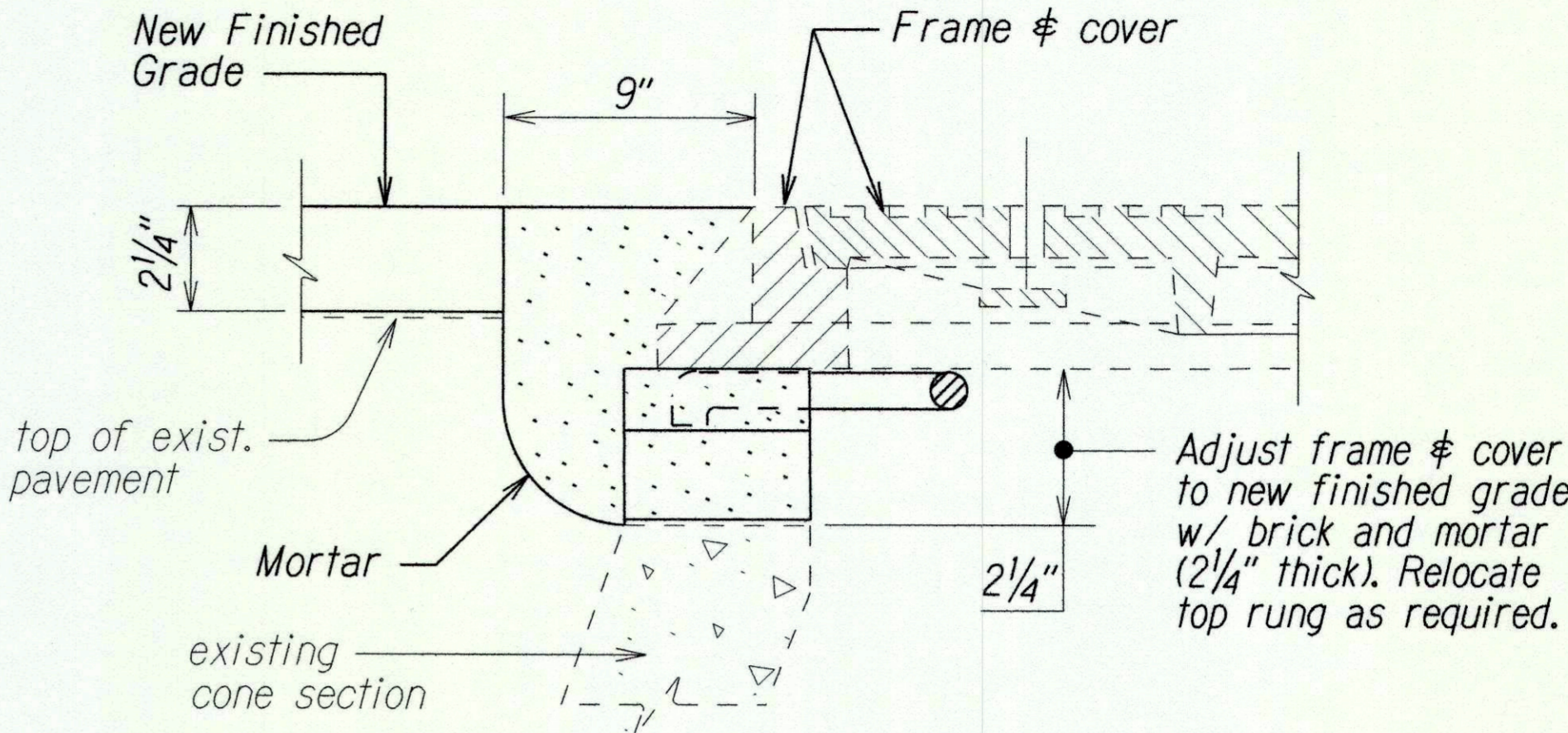
WATER CONSTRUCTION NOTES

- Unless otherwise specified, all materials and construction of water facilities and appurtenances shall be in accordance with the "Water System Standards, 2002" as adopted by the Department of Water, County of Kauai, including all subsequent ammendments and additions.
- All required project submittals (materials, shop drawings, chlorination plan, etc.) shall be approved by the Department Construction Management Division before a pre-construction conference can be scheduled, once all project submittals have been approved by the Department of Water (DOW) Construction Engineer, the DOW Construction Engineer will notify the Contractor that a pre-construction conference can be arranged. The contractor shall arranged a pre-construction conference with Department of Water at least ten (10) calendar days before construction and shall notify the Department of Water at least three (3) working Days prior to start of construction.
- The Contractor shall submit the names and telephone numbers of its authorized job superintendent and at least three (3) additional persons to contact in case of an emergency during non-working hours.
- All materials (pipe, lubricants, paints, sealants, form oil, concrete admixtures, etc.) in direct contact with the potable water shall have National Sanitation Foundation (NSF) certifications. The Contractor shall submit these certifications to the Department of Water for review and approval prior to its application.
- The locations of existing water mains and appurtenances shown on the plans are approximate only. The Contractor shall verify the exact locations in the field. Excavation around existing water main shall be done by hand.
- The Contractor shall provide unobstructed access to existing hydrants, valves and water meters at all times.
- All water valves that will be abandoned in place shall be placed in the "closed" postion. Remove top section of valve box and concrete settlement slab. Fill remainder of valve box with concrete. Place backfill and repair pavement section to applicable State standards. Bckfill to finish grade in unpaved shoulder area.
- The Department of Water shall be provided twenty (20) working days for all submittal reviews from the time of submission by the Contractor.
- Existing cast iron frame and cover shall be carefully removed, cleaned and painted with approved asphaltum paint prior to installation. The Contractor shall replace any frame and cover damaged during removal. Frames and covers and valve boxes to be adjusted shall match new finish grade.
- Contractor shall install water facilities only after reaching final subgrade or higher. The Department of Water will not allow installation of any water facilities until the final subgrade layer at minimum has been achieved.

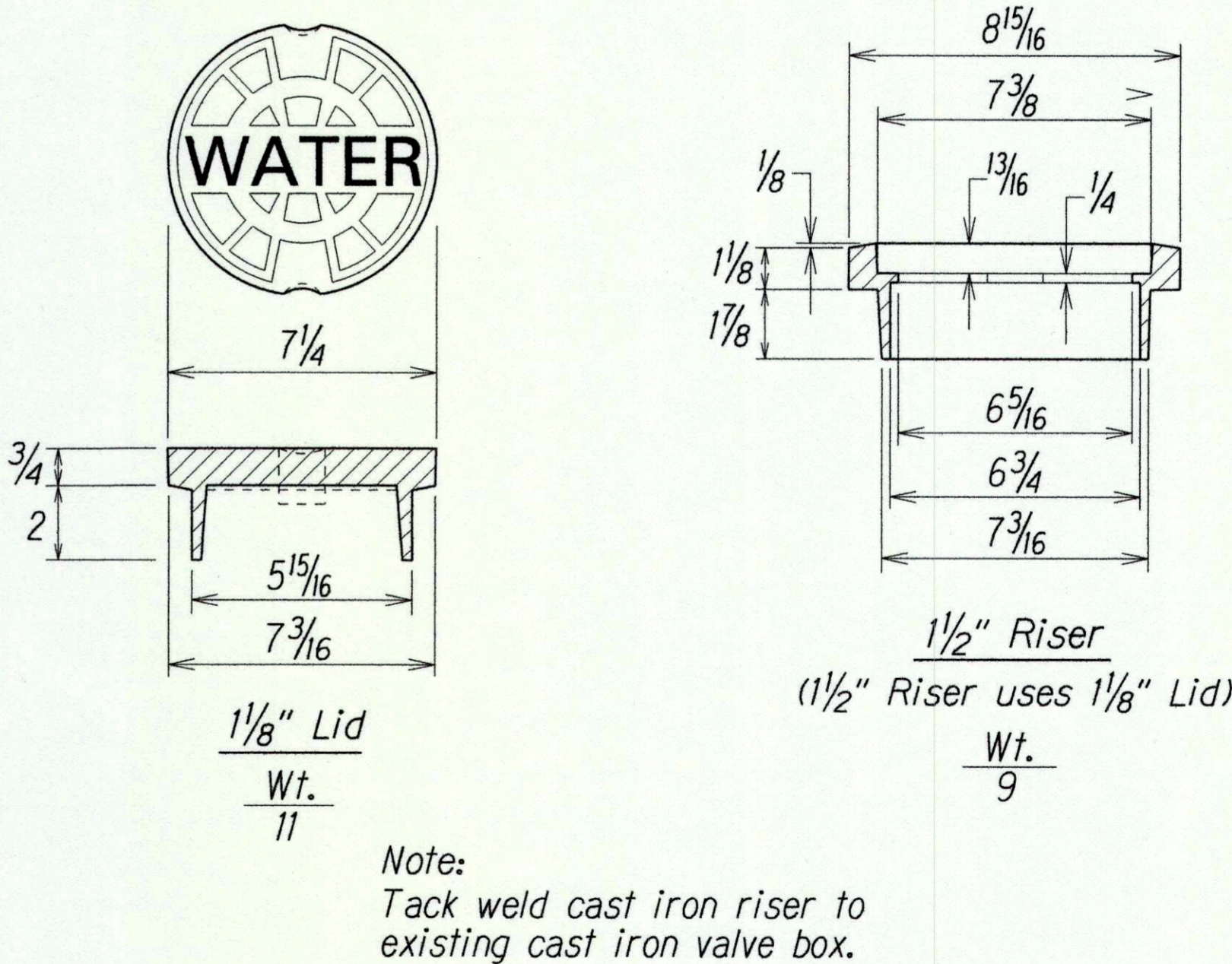
SPECIAL NOTES TO CONTRACTOR/DEVELOPER:

Certification of Completion for these water system facilities will not be issued until:

- All water improvements are complete and dedicated to the Department of Water.
- As-built drawings are submitted to the Department of Water.
- Other required conditions are completed, if applicable.



TYPICAL MANHOLE FRAME & COVER ADJUSTMENT  
(WATER, SEWER, STORM DRAIN & UTILITY MANHOLES)  
Not to Scale



FIXED CAST IRON RISER FOR  
ALL 5-1/4" SHAFT VALVE BOXES  
Not to Scale

APPROVED:

for [Signature]  
Manager and Chief Engineer  
Department of Water  
County of Kauai

7/11/18  
Date

STATE OF HAWAII  
DEPARTMENT OF TRANSPORTATION  
HIGHWAYS DIVISION

MISCELLANEOUS NOTES & DETAILS  
  
MAALO ROAD RESURFACING  
Mile Post 1.0 to Mile Post 2.0  
Project No. 583A-01-18M  
  
Not to Scale
Date: March 2017

SHEET No. 1 OF 1 SHEETS

ORIGINAL PLAN	DATE
DESIGNED BY	
DRAWN BY	
CHECKED BY	
NOTED BY	
QUANTITIES BY	
REVISIONS	