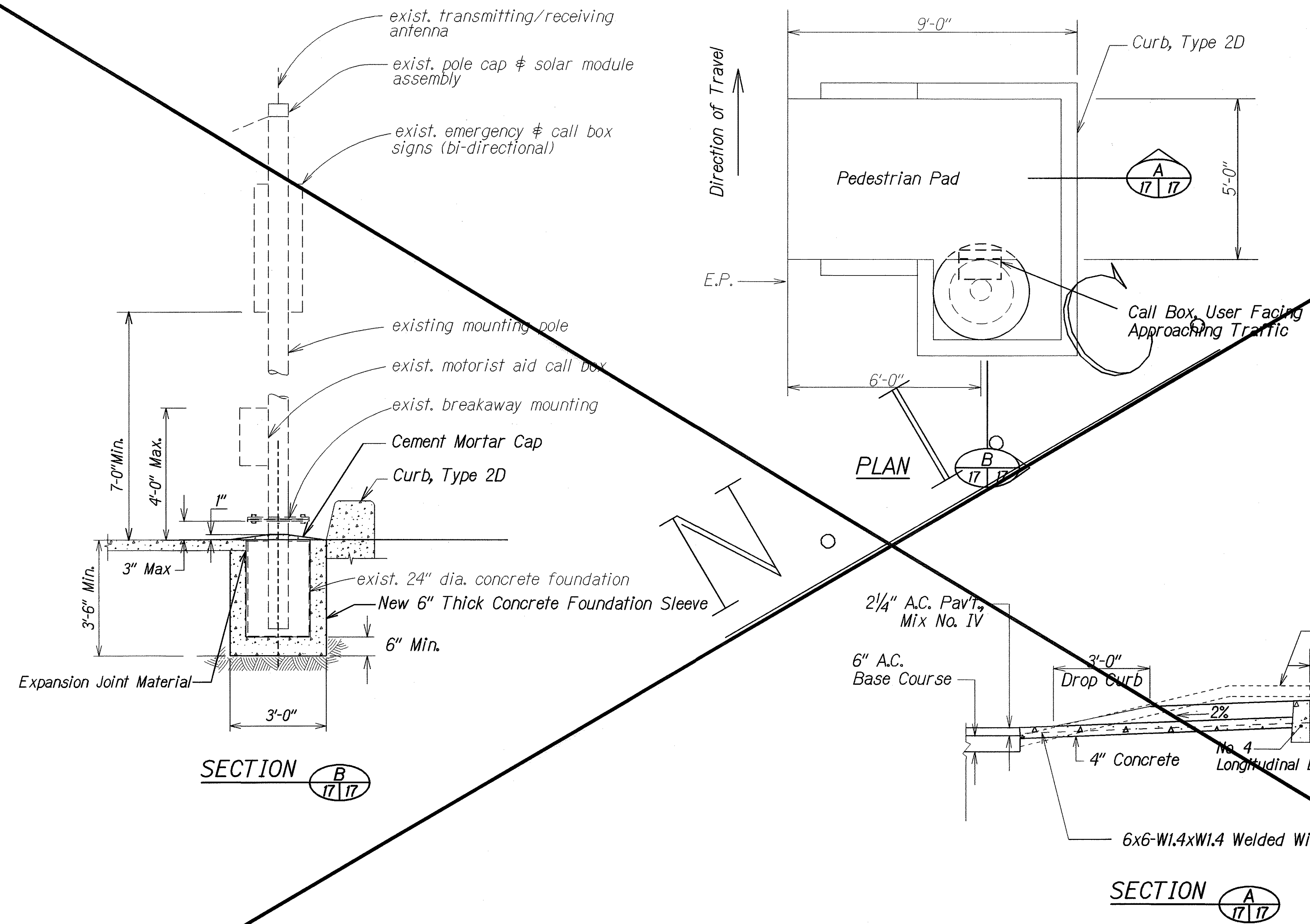


DIST. NO.	STATE	PROJ. NO.	FISCAL YEAR	SHEET NO.	TOTAL SHEETS
HAWAII	HAW.	583A-01-01M	2004	17	33



- NOTES**
1. Notify the Engineer at least 3 days before commencing relocation operations.
 2. The Engineer will approve the exact location and finished elevation of the Reconstructed Emergency Telephone Station in the field.
 3. Disconnect existing mounting pole assembly from base before excavating and removing exist. concrete foundation. Clean existing foundation after removal.
 4. Concrete Foundation Sleeve shall be Class B placed between undisturbed material and exist. foundation.
 5. 1/2 inch Expansion Joint Material shall be placed between the foundation and abutting concrete pad.
 6. For Additional Curb Details, See Standard Plans D-04.

DETAILS FOR RECONSTRUCTION OF EMERGENCY TELEPHONE STATION
 Not to Scale

DESIGNED BY	DATE
TRACED BY	Dec. 2003
NOTED BY	
QUANTITIES BY	
CHECKED BY	

STATE OF HAWAII
 DEPARTMENT OF TRANSPORTATION
 HIGHWAYS DIVISION

**RECONSTRUCT EMERGENCY
 TELEPHONE STATION**

MAALO ROAD RESURFACING
 Vicinity of Wailua Falls
 Project No. 583A-01-01M

Not to Scale Date: Aug. 2003

SHEET No. 1 OF 1 SHEETS