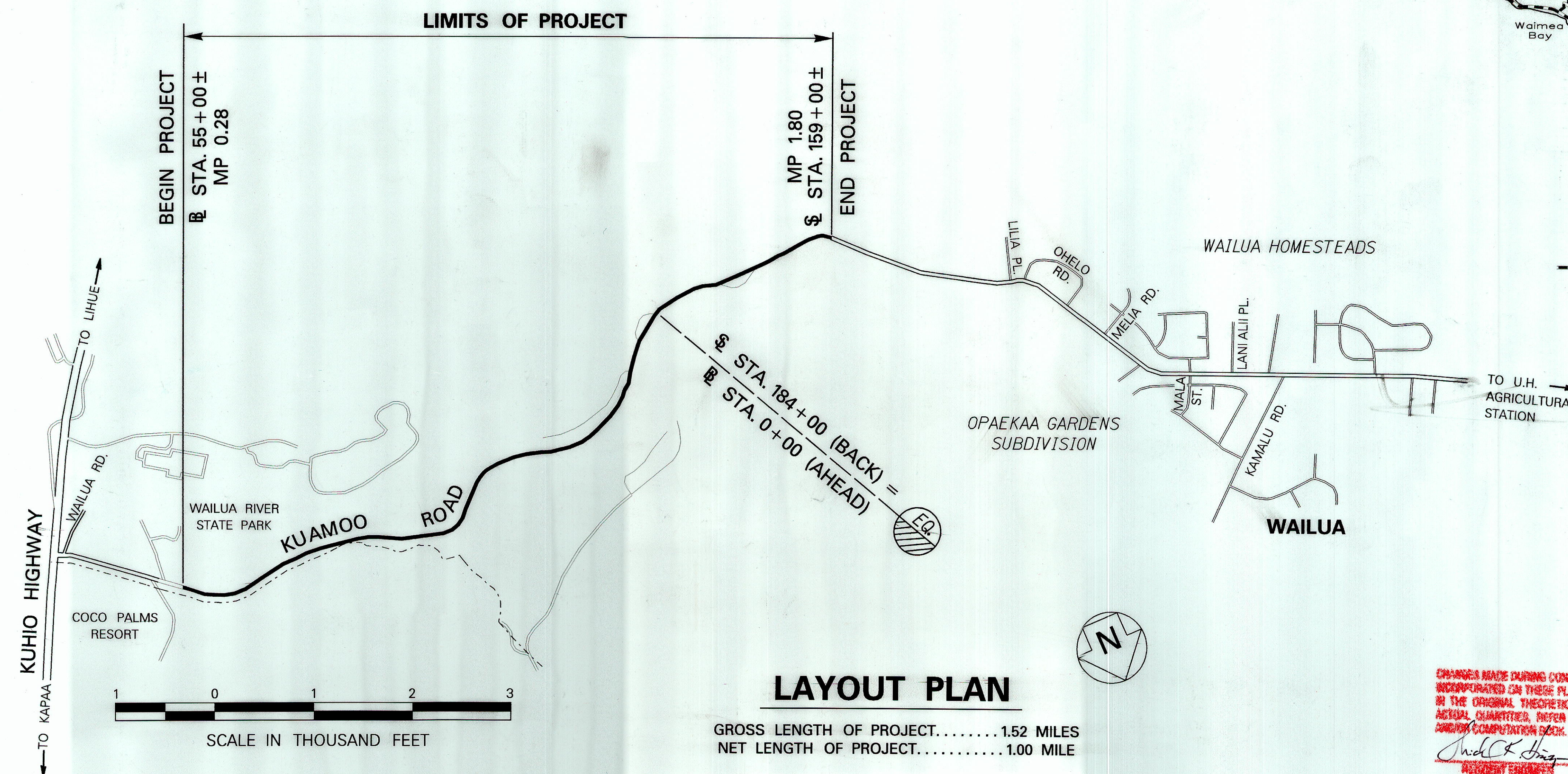
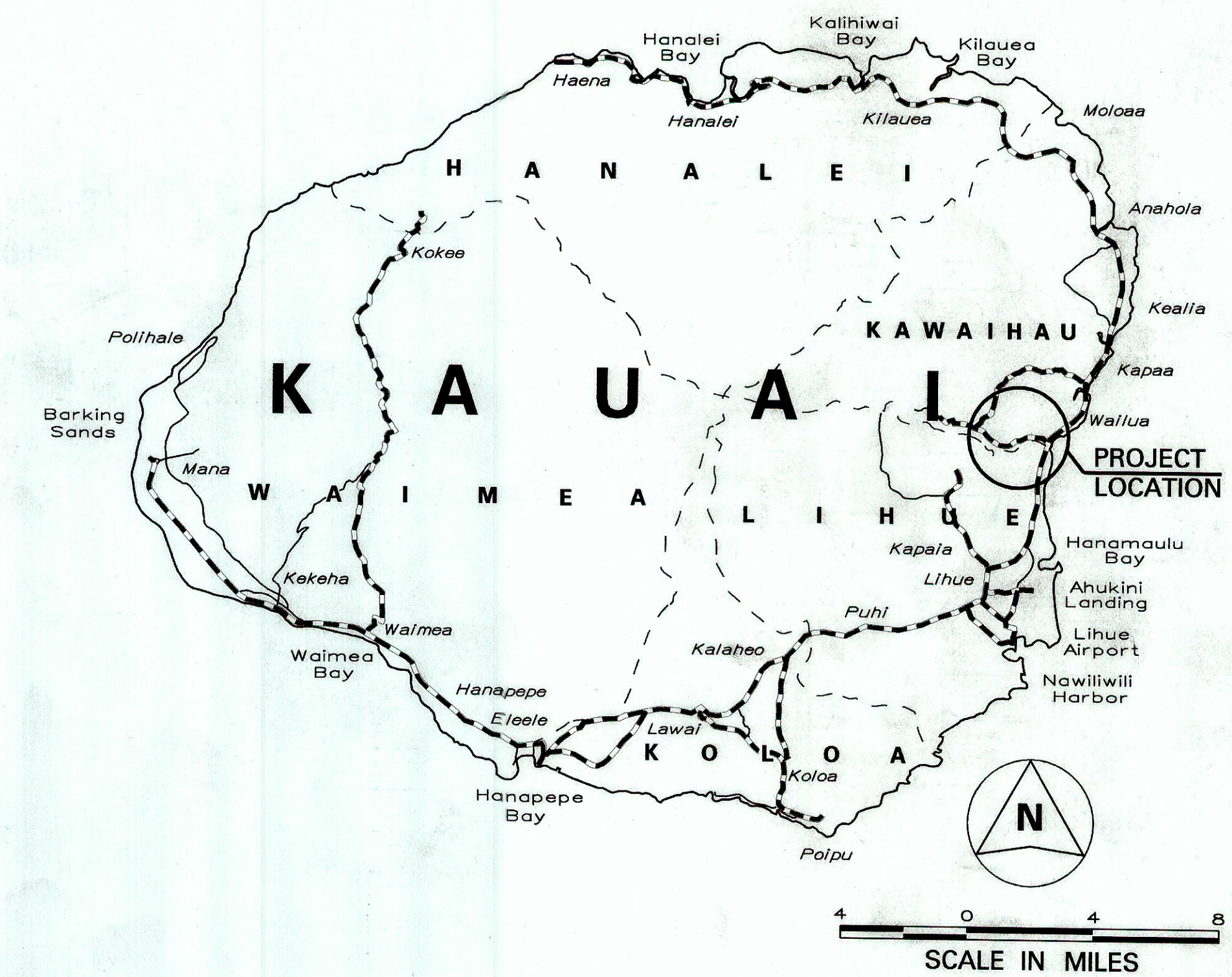
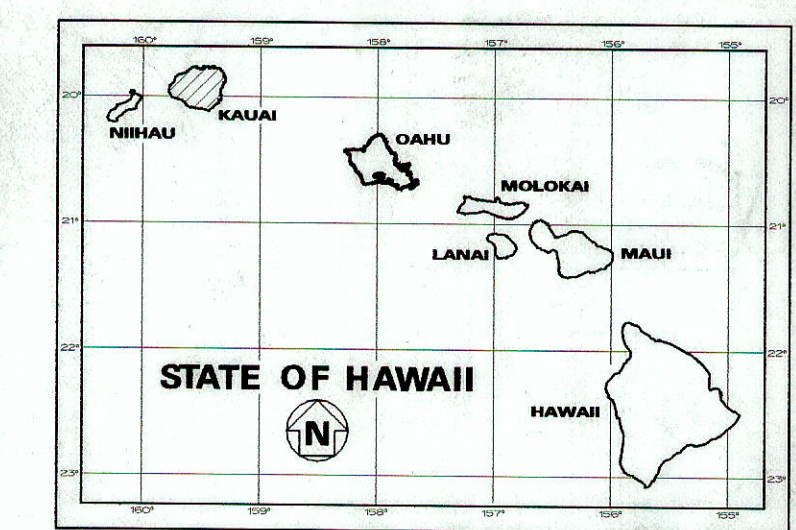
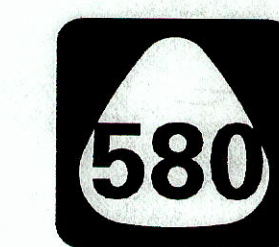


INDEX TO DRAWINGS	
SHEET NO.	DESCRIPTION
1	TITLE SHEET
2	STANDARD PLANS AND SUMMARY
3	GENERAL NOTES AND LEGEND
4 - 5	WATER POLLUTION AND EROSION CONTROL NOTES
6	PAVEMENT MARKING, LEGEND, DETAILS, NOTES & SUMMARY
7	RUMBLE STRIP SIGN DETAILS & NOTES
8	CENTERLINE MILLED RUMBLE STRIP DETAIL
9	EDGE LINE MILLED RUMBLE STRIP DETAIL
10 - 14	PAVEMENT MARKING & TRAFFIC SIGNING PLAN

STATE OF HAWAII
DEPARTMENT OF TRANSPORTATION
HIGHWAYS DIVISION
HONOLULU, HAWAII
"AS-BUILT"
PLANS FOR
KUAMOO ROAD
SAFETY IMPROVEMENTS
VICINITY OF OPAEKAA FALLS
FEDERAL-AID PROJECT NO. HRRP-0580(4)
DISTRICT OF KAWAIHAU
ISLAND OF KAUAI

FED. ROAD DIST. NO.	STATE	FED. AID PROJ. NO.	FISCAL YEAR	SHEET NO.	TOTAL SHEETS
HAWAII	HAW.	HRRP-0580(4)	2009	1	14



----- FEDERAL AID PROJECTS PREVIOUSLY CONSTRUCTED OR UNDER CONSTRUCTION

MILE POST 0.28 TO MILE POST 1.80

DESIGN DESIGNATION

ADT (2009).....	12,600
ADT (2029).....	17,700
DHV	1,500
D	65/35
T	1.5 %
V	25/35 M.P.H.

CHANGES MADE DURING CONSTRUCTION HAVE BEEN INCORPORATED ON THESE PLANS EXCEPT CHANGES IN THE ORIGINAL THEORETICAL QUANTITIES. FOR ACTUAL QUANTITIES, REFER TO PROJECT LEDGER AND/OR COMPUTATION BOOK.

[Signature] 11/9/15
RESIDENT ENGINEER DATE

DEPARTMENT OF TRANSPORTATION
STATE OF HAWAII

APPROVED: *[Signature]* 3-6-09
DIR. OF TRANSPORTATION DATE

DESIGNED BY _____
MANAGED BY _____
HWY-KE _____
241-3000 _____
MARCH 2009 _____
DATE